



BLM New Mexico Fuelwood Special Stipulations

These Special Stipulations are part of your permit and must be in the permittee's possession when gathering and transporting fuelwood upon public lands or roads.

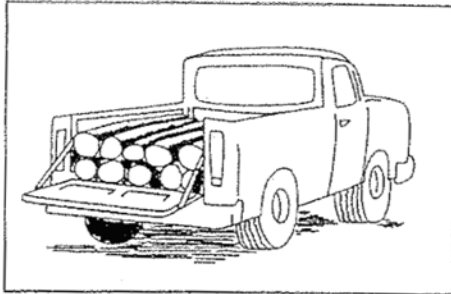
1. Permits are non-refundable and non-transferable and are only valid on public lands administered by Bureau of Land Management within the areas specified on the map.
2. Adhere to all instructional and regulatory signs posted on BLM lands.
3. Vehicle travel is restricted to established roads and two-tracks.
4. Any completely dead pinyon or juniper tree may be cut and removed as long as doing so does not constitute a prohibited action as defined below.
5. After cutting a dead standing tree, any remaining stump must be no taller than 6 inches.
6. Slash (branches, stems, etc.) and any unused vegetative material resulting from harvesting activities must be removed from roads, fences, and other improvements and scattered on the ground at no more than 24 inches high.
7. Leave gates as you found them.
8. Securely attach and validate one haul tag per half cord of firewood while the load is in transport making sure haul tags are highly visible.
9. Ensure all power saws are equipped with an exhaust system and are in good condition. Each saw must have a spark arrestor consisting of a wire mesh screen with a maximum mesh opening of .023 inches.
10. One must have legal access to BLM lands in order to collect fuelwood.

Prohibited actions:

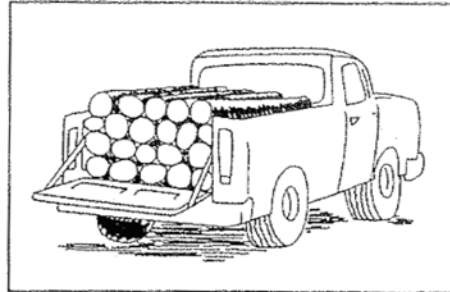
1. Littering or dumping trash.
2. Disturbing prehistoric sites, historic sites, or artifacts. Archaeological and historic resources are protected by Federal Laws. No driving on or across archaeological sites or historical structures is permitted. Intentional disturbance or vandalism of archaeological or historical sites or removal of historic artifacts of any kind is punishable under the Archaeological Resources Protection Act (Public Law 96-95; 16 U.S.C. 470) by fines of up to \$10,000 or imprisonment of up to one year, or both, for each incident.
3. Vehicular travel on roads that show evidence of having been closed to vehicular traffic by such means as berms, ripping, scarification, reseeding, fencing, gates, barricades or posted closures.
4. Vehicular travel on unimproved roads when it creates rutting in excess of four (4) inches deep.
5. Vehicular travel off road more than 300 feet from existing routes.
6. Blocking traffic or impeding fire and emergency vehicles.
7. Damaging or disturbing any tree with visible cavities or other evidence of wildlife use.
8. Using heavy equipment to cut and/or remove forest products.
9. Forest product removal within 150 feet of the centerline of any flowing watercourse or paved road or highway.
10. Cutting or removal of trees or logs marked with paint or tagged as wildlife trees, bearing trees, seed trees, or with transect location signs.
11. Cutting, injuring, or removing any live tree.
12. Operating mechanical equipment (e.g. chainsaws) in areas designated as a fire restriction closure. For current fire restrictions, call 505-761-8700 or go to www.nmfireinfo.com.



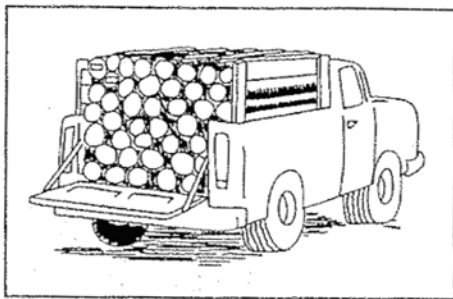
Measuring and Removing Fuelwood from BLM Public Lands



1/3 Cord for Long Bed
1/4 Cord for Short Bed



1/2 Cord for Long Bed
1/3 Cord for Short Bed

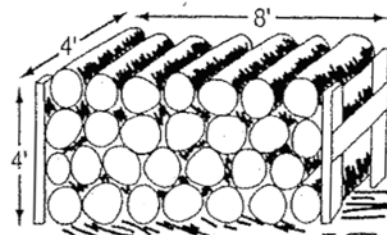


1 Cord for Long Bed
3/4 Cord for Short Bed

$$\text{Number of Cords} = (\text{length} \times \text{width} \times \text{height}) \div 128$$

Firewood is commonly measured in cords. A standard cord is the amount of lightly piled wood in a stack 4 feet wide by 4 feet high by 8 feet long.

The average half-ton pickup truck can carry a half cord of dry wood without overlapping the vehicle.



ONE CORD (128 cubic feet)

BLM Taos Field Office
226 Cruz Alta Rd.
Taos, NM 87571
(575) 758-8851

BLM Rio Puerco Field Office
100 Sun Ave NE #330
Albuquerque, NM 87109
(505) 761-8700