

**1998 NORTHEAST NPR-A STIPULATIONS**  
East of the east bank of the Ikpikpuk River

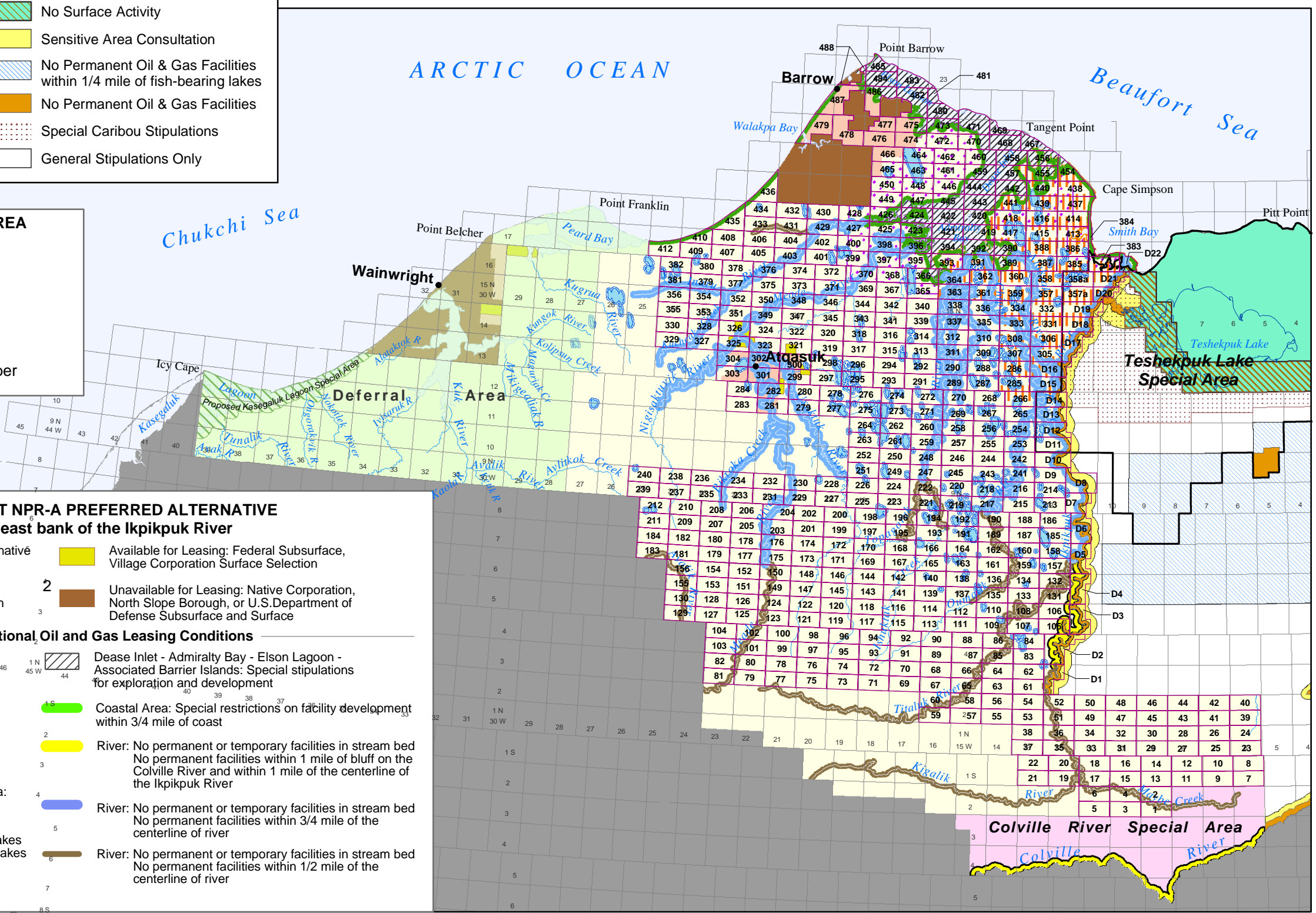
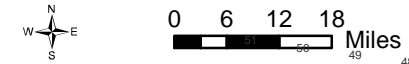
- Private Land
- Native Corporation Selected Lands
- Public Lands Not available for Oil & Gas Leasing
- Available for Oil & Gas Leasing with:
  - No Surface Activity
  - Sensitive Area Consultation
  - No Permanent Oil & Gas Facilities within 1/4 mile of fish-bearing lakes
  - No Permanent Oil & Gas Facilities
  - Special Caribou Stipulations
  - General Stipulations Only

**NORTHWEST NPR-A 2004 LEASE AREA**

- 2004 NW NPR-A Lease Area
- 2004 NW NPR-A Lease Area on Split Estate Land
- Excluded from 2004 NW NPR-A Lease Area
- Lease Tract with Lease Tract Number

**2004 NORTHWEST NPR-A PREFERRED ALTERNATIVE**  
West of the east bank of the Ikpikpuk River

- Available for Leasing with Preferred Alternative "General Stipulations and ROPs" only
  - Available for Leasing: Split Estate Land, Federal Subsurface, North Slope Borough or Native Corporation Surface
  - Available for Leasing: Federal Subsurface, Village Corporation Surface Selection
  - Unavailable for Leasing: Native Corporation, North Slope Borough, or U.S. Department of Defense Subsurface and Surface
- Areas with Additional Oil and Gas Leasing Conditions**
- Deferral Area
  - Brant Survey Area
  - Caribou Study Area
  - Colville River Special Area
  - Proposed Kasegaluk Lagoon Special Area: No Permanent Facilities
  - Deep Water Lakes: No permanent or temporary facilities on lakes No permanent facilities within 1/4 mile of lakes
  - Dease Inlet - Admiralty Bay - Elson Lagoon - Associated Barrier Islands: Special stipulations for exploration and development
  - Coastal Area: Special restrictions on facility development within 3/4 mile of coast
  - River: No permanent or temporary facilities in stream bed No permanent facilities within 1 mile of bluff on the Colville River and within 1 mile of the centerline of the Ikpikpuk River
  - River: No permanent or temporary facilities in stream bed No permanent facilities within 3/4 mile of the centerline of river
  - River: No permanent or temporary facilities in stream bed No permanent facilities within 1/2 mile of the centerline of river



<sup>1</sup> Correction: This map corrects an error pertaining to split estate land available for leasing shown on Map 1, Preferred Alternative in the Northwest National Petroleum Reserve - Alaska Integrated Activity Plan/Environmental Impact Statement (NW NPR-A IAP/EIS) Record of Decision (ROD). Refer to Map 05. Split Estate Lands of the NW NPR-A Final IAP/EIS Volume 3; areas shown as "Village Corp. Surface; NSB Subsurface 'fluid hydrocarbons at horizon'" (in red) were shown in error as unavailable for leasing on Map 1 of the ROD. These areas are correctly shown on this map as "Available for Leasing: Split Estate Land, Federal Subsurface, North Slope Borough or Native Corporation Surface". This error was corrected on February 24, 2004.

<sup>2</sup> Correction: This map corrects a second error pertaining to split estate land unavailable for leasing shown on Map 1, Preferred Alternative in the NW NPR-A IAP/EIS ROD. Refer to Map 5. Split Estate Lands of the NW NPR-A Final IAP/EIS Volume 3; portions of Township 23N Range 18W and Township 22N Range 18W Sections 12 and 13 shown as "Village Corp. Surface; Federal Subsurface" (in brown) were shown in error as available for leasing on Map 1 of the ROD. These areas are correctly shown on this map as "Unavailable for Leasing: Native Corporation, North Slope Borough, or U.S. Department of Defense Subsurface and Subsurface". These areas are excluded from 2004 NW NPR-A Lease Area. This error was corrected on April 18, 2004.