



NATIONAL
CONSERVATION
LANDS



Berryessa Snow Mountain National Monument

The Bureau of Land Management and
Mendocino National Forest invite you to

➤ Recreation, Volunteerism and Stewardship Workshops

Dedicated volunteers play a key role in helping the Bureau of Land Management and U.S. Forest Service, as cooperative federal managers of the Berryessa Snow Mountain National Monument, to maintain and protect the monument's recreational opportunities and natural resources.

The BLM and USFS will be hosting the **Recreation, Volunteerism and Stewardship Workshop** in two locations in May to bring together past, current and future volunteers.

These workshops will:

- **Engage** stakeholders in a collaborative discussion about resource stewardship and volunteerism to support the monument.
- **Share** expertise and lessons learned from previous volunteer efforts and partnerships with the federal land managers.
- **Learn** more about agency processes and requirements for projects that rely on volunteer support.
- **Create successful partnerships** for a thriving monument and network with other volunteer groups.

We believe partnerships and inclusion are vital to managing sustainable public lands for the benefit of current and future generations.

Attend the workshop and invest in America's public lands!

Saturday, May 12, 2018

9:00 am to 3:00 pm

**Skyline Park Social Room
2201 Imola Ave.
Napa, CA 94559**

Friday, May 18, 2018

9:00 am to 3:00 pm

**Grange Community Center
9355 Government St.
Upper Lake, CA 95485**

The workshops will have a similar agenda and format.

Discussions may focus on areas of the monument that are closest to the workshop venue.

If you plan on attending,
**please RSVP by
Friday, April 20**
to the following link:

[https://www.surveymonkey.com/
r/5PM7ZMV](https://www.surveymonkey.com/r/5PM7ZMV)

For more information about the **Berryessa Snow Mountain National Monument** visit
<https://www.blm.gov/berryessa-snow-mountain>.

For more information about the workshops, contact Cici Vu at (415) 391-7900 or cvu@kearnswest.com.



Berryessa Snow Mountain National Monument

What is the Berryessa Snow Mountain National Monument?

The Berryessa Snow Mountain National Monument is comprised of 330,780 acres of federally managed public land that was designated a national monument by Presidential Proclamation on July 10, 2015.

This monument extends from nearly sea level to 7,000 feet in elevation. It connects BLM-managed lands at the south to U.S. Forest Service-managed lands at the north. The monument includes Berryessa Peak and Snow Mountain, encompassing stunning views, habitat diversity and three wilderness areas. It offers many recreational opportunities and is within a short drive from several metropolitan areas.

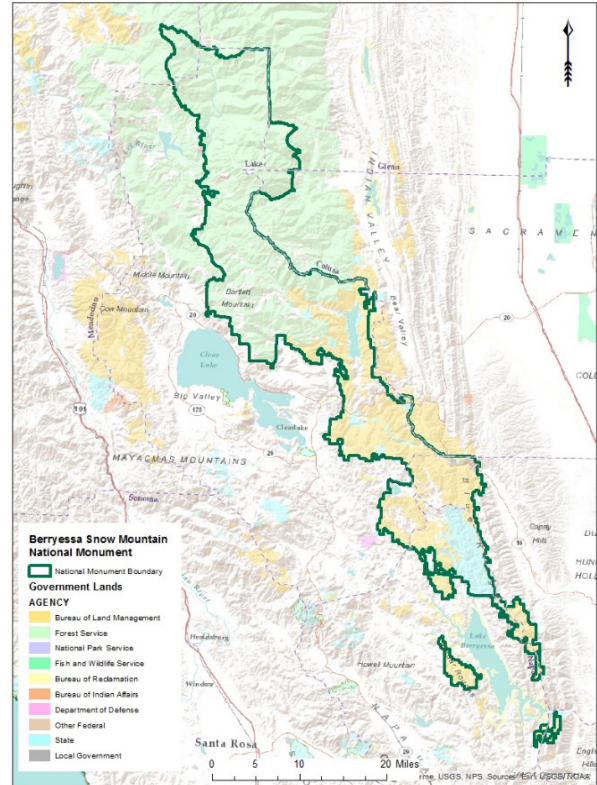
The Berryessa Snow Mountain National Monument offers a wealth of natural, historical and cultural resources, as well as exciting opportunities for people to enjoy the outdoors.

What is the purpose of these workshops?

The BLM and USFS recognize that volunteers play an important role in the stewardship and maintenance of this monument's recreational values and natural resources.

Monument planning processes are not the focus of these workshop discussions. These workshops will not cover new trail proposals, new recreational development or travel management.

The Recreation, Volunteerism and Stewardship Workshops will focus on the monument's existing resources and how best to maintain them. By bringing together the monument's volunteer community in one place, we aim to support knowledge sharing, relationship building and partnership development among the various groups and agencies.



Why should I attend?

If you or your organization have volunteered in the monument and/or have an interest in volunteering in the future, these workshops are designed for you! The workshops will be interactive and focus on sharing information, ideas and identifying opportunities for future partnerships.

What if I can't attend a workshop in person?

If you are not able to attend, we encourage you to designate another person who can attend and represent your organization. Volunteerism, stewardship and recreational opportunities are part of an ongoing dialogue with monument stakeholders.

The BLM and USFS welcome your input.