

# Wilderness Character Evaluation: Sheep Rock

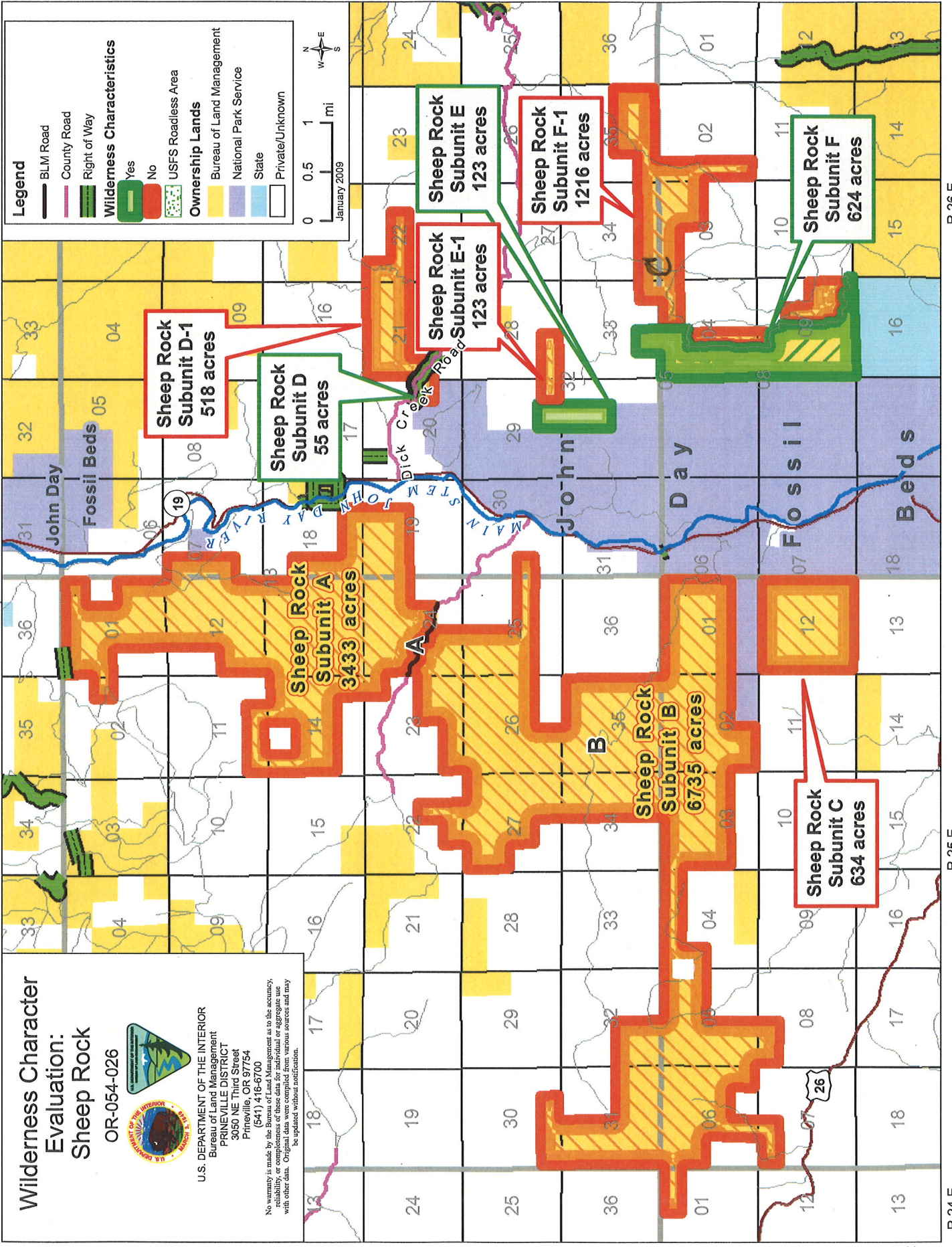
OR-054-026



U.S. DEPARTMENT OF THE INTERIOR  
Bureau of Land Management  
PRINEVILLE DISTRICT  
3050 NE Third Street  
Prineville, OR 97754  
(541) 416-6700

No warranty is made by the Bureau of Land Management as to the accuracy, reliability, or completeness of these data for individual or aggregate use with other data. Original data were compiled from various sources and may be updated without notification.

Map 1



OR-054-026/ Sheep Rock Inventory Unit

**2008 John Day Basin Wilderness Character Evaluation Form**

**Wilderness Character Evaluation For: OR-054-026/ Sheep Rock Inventory Unit**

**1. Previous BLM wilderness inventory?**

No \_\_\_\_\_ Yes \_\_\_\_\_ Partial \_\_\_\_\_ **X** \_\_\_\_\_

a) Inventory Source: Bureau of Land Management, OR/WA Wilderness Review Initial Inventory Final Decision, August 1979, Final Intensive Inventory Decisions, November 1980.

b) Inventory Unit Name(s)/Number(s): Fossil Beds / OR-5-11

c) Map Name(s)/Number(s): 1979 Final Decision- Initial Wilderness Inventory Map

d) BLM District(s)/Field Office(s): Prineville District Office

Unit#/ Name	Size (historic acres)	Natural Condition? Y/N	Outstanding Solitude? Y/N	Outstanding Primitive & Unconfined Recreation? Y/N	Supplemental Values? Y/N
OR-5-11 Fossil Beds	7,623	Y	N	N	N

**2. New Wilderness Characteristic Review**

Private Recommendation: Yes   X   No \_\_\_\_\_ by?   ONDA   Date:   12/15/2006  

Oregon Natural Desert Association (ONDA) submitted these lands as a portion of its Sheep Rock Proposed WSA, received by the Prineville BLM on December 15, 2006.

Results of BLM Analysis: (separate by subunit if appropriate)

Unit#/ Name	Size (acres)	Natural Condition? Y/N/NA	Outstanding Solitude? Y/N/NA	Outstanding Primitive & Unconfined Recreation? Y/N/NA	Supplemental Values? Y/N/NA
OR-054-026 Sheep Rock Subunit A (Artman	3,433	N/A	N/A	N/A	N/A

OR-054-026/ Sheep Rock Inventory Unit

Basin)					
OR-054-026 Sheep Rock Subunit B (Hog Ridge)	6,734	N	N	N	NA
OR-054-026 Sheep Rock Subunit C (Sheep Rock West)	634	Y	N	N	NA
OR-054-026 Sheep Rock Subunit D (Big Basin)	573	Y-55 acres N- 518 acres	Y-55 acres	Y-55 acres	Y- 55 acres
OR-054-026 Sheep Rock Subunit E (Middle Mountain)	246	Y	Y-123 acres N- 123 acres	Y- 123 acres N-123 acres	Y
OR-054-026 Sheep Rock Subunit F (Windy Point)	1840	Y- 624 acres N – 1,216 acres	Y- 624 acres NA – 1,216 acres	Y- 624 acres NA – 1,216 acres	Y

Conclusion

Check One:

Area reviewed lacks sufficient size and does not meet one of the exceptions for small size.

The area-or a portion of the area-has wilderness character.

The area does not have wilderness character.

(1) Describe current conditions: (Include boundary features, land ownership, size, location, topography, vegetation features and summary of major human uses/activities).

**Location:** The unit is located in Wheeler and Grant Counties, Oregon, north of U.S. Highway 26, approximately 6 to 16 miles northwest of the town of Dayville. The inventory unit consists of six (6) separate subunits, all of which are adjacent to some portion of the John Day Fossil Beds National Monument. The subunits are located on both the east and west sides of State Route 19 in close proximity to each other.

## OR-054-026/ Sheep Rock Inventory Unit

### Original 1979 Inventory

The lands in the 2007 inventory include some lands previously inventoried in 1979-1980 for their wilderness characteristics under Section 603 of FLPMA, and some lands that have not been previously inventoried.

In August 1979, the initial BLM OR/WA Wilderness Inventory effort addressed the lands in 2007 Subunits B, and C. These lands were carried forward to the 1980 Intensive Wilderness Inventory as the Fossil Beds Unit (OR-05-11). The inventory found that the majority of the unit generally appeared to have been affected primarily by the forces of nature, but the unit did not have outstanding opportunities for solitude or primitive recreation. The Final Intensive Inventory Decisions in November 1980 dropped 7,623 acres within the Fossil Beds Inventory Unit from further study with the following rationale:

“BLM’s wilderness inventory guidelines do not make any provisions for designating a wilderness study area only because the unit is adjacent to a National Monument such as the John Day Fossil Beds. It is not possible to experience outstanding solitude by avoiding the sights, sounds and evidence of other visitors within this unit. The rugged terrain and steep canyons within this unit are recognized, but the only spring within this area is located in the extreme southwestern portion of the unit. The opportunities offered by these geographic features are extremely limited, however, due to the very irregular shape and small size of the unit. These limiting attributes are the major reasons why opportunities for solitude or primitive and unconfined types of recreation are less than outstanding.”

The lands in 2007 Subunits A, D, E, and F were not previously inventoried because they were considered to be too small in size to meet wilderness review requirements.

### Description of Current Conditions

**Six subunits are adjacent to the John Day Fossil Beds National Monument; Subunits A, B and C on the west side of State Route 19, and Subunits D, E and F on the east side of State Route 19:**

**Subunit A – Artman Basin:** This subunit is bordered on the east side by private lands and a ¼ mile portion of the John Day Fossil Beds National Monument. It is bordered on the south by a BLM-maintained natural surface road (# 7540 Squaw Creek Rd.), and bordered on the north and west sides by private land. The unit is 3,433 acres in size.

**Subunit A is contiguous with other Federal lands with identified wilderness characteristics. However, even when combined with the National Park Service lands (40 acres), Subunit A (3,433 acres) does not meet the 5,000 acre minimum size requirement. For this reason, Subunit A is not addressed further in this document.**

**Subunit B – Hog Ridge:** This subunit is bordered on the north by a BLM-maintained natural surface road (# 7540 Squaw Creek Rd.), on the south and east sides by a combination of private lands and John Day Fossil Beds National Monument, and on the west by private lands. The

## OR-054-026/ Sheep Rock Inventory Unit

irregular shaped subunit consists of two main sections of land that are connected by a narrow ¼ mile-wide bridge of public land. The unit is 6,734 acres in size.

The topography in the east portion of this subunit consists of steep-sided mountains that rise from about 2,800 feet up to 4,777 feet in elevation. They form a range that extends in a north-southeast direction. The north-facing slopes are highly dissected by several washes just south of Squaw Creek. The vegetation in this portion includes clusters of juniper trees and a few pine trees scattered along the steep hillsides. The understory includes big sage, currant, green rabbitbrush, salix, bluebunch wheatgrass, Idaho fescue, and Sandberg's bluegrass.

In the west portion of this subunit, the landscape is dominated by a massive, reddish brown, basalt butte and a steeply sloped mountain range that extend in a east-west direction. Clusters of juniper trees are scattered along the steep sides and crests of the mountains and along the foothills of the butte. Bluebunch wheatgrass, Idaho fescue, and Sandberg's bluegrass also grow in the part of the unit. Non-native grass species, especially cheatgrass and medusahead rye, have taken over large parts of the subunit, especially in the western portion.

**Subunit C – Sheep Rock West:** This subunit is bordered on the north and east sides by John Day Fossil Beds National Monument, and on the remaining sides by private land. The unit is 634 acres in size.

**Subunit D – Big Basin:** This subunit is bordered on the south and west sides by private lands and John Day Fossil Beds National Monument, and on the remaining sides by private land. The unit is 573 acres in size. However, Grant County Dick Creek Road runs right through the subunit, cutting 518 acres off of the subunit (labeled as Subunit D-1 on map 1). The remaining 55 acres of the subunit (labeled Subunit D on Map 1) are inventoried below.

**Subunit E – Middle Mountain:** This subunit is bordered on the west side by John Day Fossil Beds National Monument, on the south by private land and John Day Fossil Beds National Monument, and on the remaining sides by private land. The unit is 246 acres in size.

**Subunit F – Windy Point:** This subunit is bordered on the west side by John Day Fossil Beds National Monument, on the south side by State land, and on the remaining sides by private land. The unit is 1,840 acres in size.

(2) Is the unit in a natural condition?

Yes  – Subunits C, portion of D (55 acres), E, portion of F (624 acres) No  Subunits B, D-1, F-1 NA \_\_\_\_\_

Describe:

**Subunit B – Hog Ridge:** Route B, which has been determined by BLM to be a road, cuts through the center of this subunit and negatively affects the naturalness of the subunit. See Road Analysis Forms for more details.

**Subunit C – Sheep Rock West:** The lands are commercially grazed under BLM permit. The lands are Allotment #2642. The subunit is primarily in a natural condition.

OR-054-026/ Sheep Rock Inventory Unit

**Subunit D – Big Basin:** Dick Creek County Road bisects the unit. The remaining 55 acre portion of the subunit adjacent to NPS lands is primarily in a natural condition. The lands are commercially grazed under BLM permit in Allotment # 4001, which has a number of developments, including fences. These facilities are substantially unnoticeable.

**Subunit E – Middle Mountain:** The unit is bordered by NPS on the west side and by private land on the east side. The lands are commercially grazed under BLM permit. The lands are Allotment # 4007. The lands are primarily in a natural condition.

**Subunit F – Windy Point:** Route C, which BLM has determined to be a road, bisects the unit near Windy Point, separating the east and west portions of the unit. There is a juniper cut area located in the east half of T12 S., R 26 E., Section 9. These unnatural features have been segregated from the rest of the subunit (labeled Subunit F-1 on Map 1). The remainder of the subunit (labeled Subunit F on Map 1) is in a natural condition. The lands are commercially grazed under BLM permit. The lands are Allotments # 2642 and # 4007.

(3) Does the unit have outstanding opportunities for solitude?

Yes  X- Subunits D, E, F  No  X-Subunits B, C, D-1, E-1, F-1  NA

Description:

**Subunit B – Hog Ridge:** The very irregular shape of this subunit, and the narrow ¼ mile section in the center, make the opportunity for solitude in this subunit less than outstanding.

**Subunit C – Sheep Rock West:** Surrounded by large ranches so there is solitude, but not outstanding in character due to the narrowness of the unit, even when considered in combination with the NPS lands.

**Subunit D – Big Basin (remaining 55 acres):** The opportunity for solitude is outstanding only when considered in combination with the adjacent National Park Service lands.

**Subunit E – Middle Mountain:** The 123 acre portion of Subunit E that shares a mile of boundary interface with the NPS lands (Subunit E on Map 1) also shares in the outstanding opportunities for solitude offered by the NPS unit. The 123 acre protrusion does not possess outstanding opportunities for solitude (Subunit E-1 on Map 1).

**Subunit F – Windy Point:** The 624 acre portion of Subunit F that shares a 2 mile boundary interface with the NPS lands (Subunit F on Map 1) also shares in the outstanding opportunities for solitude offered by the NPS unit.

(4) Does the unit have outstanding opportunities for primitive and unconfined recreation?

Yes  X- Subunits D, E, F  No  X-Subunits B, C, D-1, E-1, F-1  NA

Description:

## OR-054-026/ Sheep Rock Inventory Unit

**Subunit B – Hog Ridge:** The subunit does not provide outstanding opportunities for primitive, unconfined recreation due to the highly irregular configuration.

**Subunit C – Sheep Rock West:** Opportunities for primitive, unconfined recreation are not outstanding due to the narrowness of the unit, even when considered in combination with the NPS lands.

**Subunit D – Big Basin (remaining 55 acres):** The opportunity for primitive, unconfined recreation is outstanding when considered in combination with the adjacent National Park Service lands

**Subunit E – Middle Mountain:** The 123 acre portion of Subunit E that shares a mile of boundary interface with the NPS lands (Subunit E on Map 1) also shares in the outstanding opportunities for primitive recreation offered by the NPS unit. The 123 acre protrusion to the east does not possess outstanding opportunities for primitive recreation (Subunit E-1 on Map 1).

**Subunit F – Windy Point:** Public hiking access is available through NPS by climbing over the NPS boundary fence. The 624 acre portion of Subunit F that shares a 2 mile boundary interface with the NPS lands (Subunit F on Map 1) also shares the outstanding opportunities for primitive recreation offered by the NPS unit.

(5) Does the unit have supplemental values?

Yes \_\_\_\_\_ No   X   NA \_\_\_\_\_

Description:

**Subunit B – Hog Ridge:** N/A

**Subunit C – Sheep Rock West:** N/A

**Subunit D – Big Basin:** When considered in combination with the adjacent National Park Service lands, this subunit shares the adjacent supplemental values.

**Subunit E – Middle Mountain:** When considered in combination with the adjacent National Park Service lands, this subunit shares the adjacent supplemental values.

**Subunit F – Windy Point:** Paleo resources are present within the subunit.

OR-054-026/ Sheep Rock Inventory Unit

**Prepared by:**

Team Members: (Names, Titles, Date)

Initial Review Aug. 14, 2007 by: Heidi Mottl (Recreation/Wilderness), Teal Purrington (NEPA/Planning), Dorothy Thomas (GIS), Anna Smith (Hydrology), Mike Tietmeyer (Range), Dan Tippy (Assistant Field Manager), Rick Demmer (Riparian), Monte Kuk (Wildlife), Robert Vidourek (Forestry), Mike Williams (Planning), Berry Phelps (Recreation), Craig Obermiller (Range), John Morris (Fish), Dana Cork (Transportation), Christina M. Welch (Field Manager), Don Tschida (Fire), Gavin Hoban (GIS), John Zancanella (Cultural), JoAnne Armson (Plants).

Realty/Mineral Records researched by Timothy Finger, BLM Wilderness Specialist on detail from Richland, UT, October, 2008.

**Approved by:**

Christina M. Welch

Field Manager

Oct. 31, 2008

Date

*This form documents information that constitutes an inventory finding on wilderness characteristics. It does not represent a formal land use allocation or a final agency decision subject to administrative remedies under either 43 CFR parts 4 or 1610.5-2.*



## OR-054-026/ Sheep Rock Inventory Unit


### PURPOSE:

This addendum provides signatory authority across gaps in supervisory oversight in the preparation process.

### DISCUSSION:

Further study has been conducted to validate the findings approved by the original signator, Christina Welch. As the new Field Manger for the Resource Area and Ms. Welch's replacement I have been briefed by the specialists assigned on the contents and underlying rationale for the findings contained in this document. I approve these findings with my signature below.

### APPROVED BY:

  
SIGNATURE

Thursday, July 08, 2010

**John Day Basin RMP Road Analysis Form**

(Factors to consider when determining whether a route is a road for wilderness inventory purposes.)

**Wilderness Inventory Area Name and Number (UNIT\_ID): OR 054-026, Sheep Rock Unit.**

**Route Name and/or Identifier: Squaw Creek Road, BLM FAMS Road # 7540 (shown as Route A on Map 1)**

**I. LOCATION:** Please refer to attached map and BLM corporate data (GIS). Route begins on private lands at State Route 19 in T. 11 S., R. 26 E., Section 30 and runs westerly through public lands where it forms the boundary between Subunits A and B, and then exists the unit back onto private lands.

**II. CURRENT PURPOSE OF ROUTE:** The route is open for public use and is also used to access a number of grazing allotments along its course, and for administrative access by agency personnel.

**III. ROAD RIGHT-OF-WAY:**

Yes \_\_\_ No X Unknown \_\_\_

BLM has obtained an easement across private lands (OR 16847) in order to provide access to the public lands.

**IV. CONSTRUCTION**

Yes X No \_\_\_

Examples:

Paved \_\_\_ Bladed X Graveled \_\_\_ Roadside Berms \_\_\_  
Cut/Fill \_\_\_ Other \_\_\_

**V. IMPROVEMENTS**

Yes X No \_\_\_

By Hand Tools \_\_\_ By Machine \_\_\_

Culverts X Stream Crossings \_\_\_ Bridges \_\_\_ Drainage \_\_\_ Barriers \_\_\_ Other X

There is a cattle guard located on public lands along its course.

OR-054-026/ Sheep Rock Inventory Unit

VI. MAINTENANCE:

A. Is their Evidence or Documentation of Maintenance using hand tools or machinery?

Yes   X   No \_\_\_\_\_

Hand Tools   (Y/N)   Machine   (Y/N)     Y  

Explain: The route is identified on BLM FAMS system as the Squaw Creek Road (BLM Road # 7540) and is being maintained by BLM. See BLM FAMS data in reference section.

B. If route is in good condition, but there is no evidence of maintenance, would mechanical maintenance with hand tools or machines be approved by BLM in the event this route became impassable?

Yes \_\_\_\_\_ No \_\_\_\_\_ N/A   X  

Comments:

VII. REGULAR AND CONTINUOUS USE:

Yes   X   No \_\_\_\_\_

VIII. CONCLUSION:

To meet the definition of a road, items IV or V, and VI-A or B, and VII must be checked yes.

Road: Yes   X   No \_\_\_\_\_

Explanation: The route is identified on BLM FAMS system as the Squaw Creek Road (BLM Road # 7540) and is being maintained by BLM.

Evaluator(s):   Heidi Mottl   Date:   9/30/07  

\* **road:** An access route which has been **improved and maintained by mechanical means** to insure **relatively regular and continuous use**. A way maintained solely by the passage of vehicles does not constitute a road.

a. **“Improved and maintained”** – Actions taken physically by people to keep the road open to vehicle traffic. “Improved” does not necessarily mean formal construction. “Maintained” does not necessarily mean annual maintenance.

b. **“Mechanical means”** – Use of hand or power machinery or tools.

c. **“Relatively regular and continuous use”** – Vehicular use that has occurred and will continue to occur on a relatively regular basis. Examples are: access roads for equipment to

## OR-054-026/ Sheep Rock Inventory Unit

maintain a stock water tank or other established water sources; access roads to maintained recreation sites or facilities; or access roads to mining claims.

OR-054-026/ Sheep Rock Inventory Unit

**John Day Basin RMP Road Analysis Form**

(Factors to consider when determining whether a route is a road for wilderness inventory purposes.)

**Wilderness Inventory Area Name and Number (UNIT\_ID): OR 054-026, Sheep Rock Unit.**

**Route Name and/or Identifier: Route B in Subunit B (shown as Route B on Map 1)**

**I. LOCATION:** Please refer to attached map and BLM corporate data (GIS). Route begins at the National Park Service Cant Ranch near the John Day River in T. 12 S., R. 26 E., Section 6 and travels approximately 3.5 miles through the unit to the northwest, exiting the unit onto private lands in T. 11 S., R. 25 E., Section 34.

**II. CURRENT PURPOSE OF ROUTE:** The route is not open to the public. It is used to access a number of springs used for grazing management, and for administrative access for agency personnel. It is also used to access private lands in Section 36 of T. 11 S., R. 25 E. and is used regularly by this landowner to manage livestock, haul feed, etc.

**III. ROAD RIGHT-OF-WAY:**

Yes \_\_\_ No X Unknown \_\_\_

**IV. CONSTRUCTION**

Yes X No \_\_\_

Examples:

Paved \_\_\_ Bladed X Graveled \_\_\_ Roadside Berms \_\_\_  
Cut/Fill \_\_\_ Other \_\_\_

**V. IMPROVEMENTS**

Yes \_\_\_ No X

By Hand Tools \_\_\_ By Machine \_\_\_

Culverts \_\_\_ Stream Crossings \_\_\_ Bridges \_\_\_ Drainage \_\_\_ Barriers \_\_\_ Other \_\_\_

**VI. MAINTENANCE:**

A. Is their Evidence or Documentation of Maintenance using hand tools or machinery?

Yes X No \_\_\_

OR-054-026/ Sheep Rock Inventory Unit

Hand Tools \_\_\_(Y/N)\_\_\_ Machine \_\_\_(Y/N)\_\_\_ Y

Explain: The route has been maintained by the grazing permittee/adjacent landowner.

B. If route is in good condition, but there is no evidence of maintenance, would mechanical maintenance with hand tools or machines be approved by BLM in the event this route became impassable?

Yes X No N/A

Comments: This route does not appear on the FAMS database and is not scheduled for any maintenance by BLM, however, BLM would allow the permittee to continue to maintain the route as necessary.

**VII. REGULAR AND CONTINUOUS USE:**

Yes X No \_\_\_\_\_

**VIII. CONCLUSION:**

To meet the definition of a road, items IV or V, and VI-A or B, and VII must be checked yes.

Road: Yes X No \_\_\_\_\_

Explanation: This route does not appear on the FAMS database and is not scheduled for any maintenance by BLM, however, BLM would allow the permittee to continue to maintain the route as necessary.

Evaluator(s): Heidi Mottl Date: 9/30/07

\* **road:** An access route which has been **improved and maintained by mechanical means** to insure **relatively regular and continuous use**. A way maintained solely by the passage of vehicles does not constitute a road.

a. **“Improved and maintained”** – Actions taken physically by people to keep the road open to vehicle traffic. “Improved” does not necessarily mean formal construction. “Maintained” does not necessarily mean annual maintenance.

b. **“Mechanical means”** – Use of hand or power machinery or tools.

c. **“Relatively regular and continuous use”** – Vehicular use that has occurred and will continue to occur on a relatively regular basis. Examples are: access roads for equipment to maintain a stock water tank or other established water sources; access roads to maintained recreation sites or facilities; or access roads to mining claims.

OR-054-026/ Sheep Rock Inventory Unit

**John Day Basin RMP Road Analysis Form**

(Factors to consider when determining whether a route is a road for wilderness inventory purposes.)

**Wilderness Inventory Area Name and Number (UNIT\_ID): OR 054-026, Sheep Rock Unit.**

**Route Name and/or Identifier: Route C in Subunit F-1 (shown as Route C on Map 1)**

**I. LOCATION:** Please refer to attached map and BLM corporate data (GIS). Route begins T. 12 S., R. 26 E., Section 3, where it enters the subunit from private property and heads north, crossing through about 1/2 mile of BLM land before exiting the subunit onto private property again in T. 11 S., R. 26 E., Section 34. This route includes an intersection where several spur routes branch off of it, including one to the west and one to the southeast.

**II. CURRENT PURPOSE OF ROUTE:** This is part of a through route that is used primarily to access private property. Only about 1 mile of the route located on BLM land. The public does not have access to this route.

**III. ROAD RIGHT-OF-WAY:**

Yes \_\_\_ No  X  Unknown \_\_\_

**IV. CONSTRUCTION**

Yes  X  No \_\_\_

Examples:

Paved \_\_\_ Bladed  X  Graveled \_\_\_ Roadside Berms \_\_\_  
Cut/Fill \_\_\_ Other \_\_\_

**V. IMPROVEMENTS**

Yes \_\_\_ No  X

By Hand Tools \_\_\_ By Machine \_\_\_

Culverts \_\_\_ Stream Crossings \_\_\_ Bridges \_\_\_ Drainage \_\_\_ Barriers \_\_\_ Other \_\_\_

**VI. MAINTENANCE:**

A. Is there Evidence or Documentation of Maintenance using hand tools or machinery?

OR-054-026/ Sheep Rock Inventory Unit

Yes \_\_\_\_\_ No \_\_\_\_\_ Unknown  X

Hand Tools \_\_\_(Y/N)\_\_\_\_\_, Machine \_\_\_(Y/N)\_\_\_\_\_

Explain: See BLM FAMS data in reference section. Is it scheduled route to receive maintenance? This route is not part of the BLM FAMS road system and BLM does not intend to maintain it, however, the adjacent landowners may have maintained it in the past.

B. If route is in good condition, but there is no evidence of maintenance, would mechanical maintenance with hand tools or machines be approved by BLM in the event this route became impassable?

Yes  X No \_\_\_\_\_ N/A \_\_\_\_\_

Comments: This is a through route, with only a small portion located on BLM land. BLM would allow the adjacent landowners to maintain it as necessary to access their private property.

**VII. REGULAR AND CONTINUOUS USE:**

Yes  X No \_\_\_\_\_

**VIII. CONCLUSION:**

To meet the definition of a road, items IV or V, and VI-A or B, and VII must be checked yes.

Road: Yes  X No \_\_\_\_\_

Explanation: This is a through route, with only a small portion located on BLM land. BLM would allow the adjacent landowners to maintain it as necessary to access their private property.

Evaluator(s): Heidi Mottl Date: 9/30/07

\* **road:** An access route which has been **improved and maintained by mechanical means** to insure **relatively regular and continuous use**. A way maintained solely by the passage of vehicles does not constitute a road.

a. **“Improved and maintained”** – Actions taken physically by people to keep the road open to vehicle traffic. “Improved” does not necessarily mean formal construction. “Maintained” does not necessarily mean annual maintenance.

b. **“Mechanical means”** – Use of hand or power machinery or tools.

c. **“Relatively regular and continuous use”** – Vehicular use that has occurred and will continue to occur on a relatively regular basis. Examples are: access roads for equipment to maintain a stock water tank or other established water sources; access roads to maintained recreation sites or facilities; or access roads to mining claims.



## OR-054-026/ Sheep Rock Inventory Unit

### REFERENCES

#### 1. Realty Program–

- a. MTPs for T. 11 S., R. 25 E., T. 11 S., R. 26 E. and T. 12 S., R. 25 E. and T. 12 S., R. 26 E.
- b. Case Files for ROW OR 010112, ROW OR 58199, ROW OR 6515, and ROW OR 40270

#### 2. Mineral Program

- a. BLM LR 2000 Record

#### 3. GIS Program –

- a. USGS National Map project
- b. BLM GIS data
- c. BLM Lower John Day River public lands map, June 1991
- d. Google Earth Commercial Mapping System, 2009

#### 4. Other Programs –

- a. NPS Map – John Day Fossil Beds National Monument

#### Team Comments- 8/14/07:

**Phelps** – The inventory is old. The inventory stated it had natural condition but lacked solitude and recreation because of its configuration.

**Morris**- The road system is used and maintained to Cal Smith Spring. BLM maintained it a few years ago.

**Kuk**- There is tons of cheatgrass.

**Morris**- There is a road on Hogg ridge.

**Tippy**– After the Rock Creek burn, there was seeding with a rangeland drill.

**Phelps**- We have been instructed to include the adjacent park service lands in the inventory unit, which we didn't do in the original inventory.

**Tippy**- Irregular shape plus public access on Squaw Creek road.

#### Windy Point/ Big Basin/ Middle Mountain Subunit Team Comments – 8/14/07:

**Tippy**-There are 3 pieces adjacent to park on East, has a juniper treatment on Windy Point parcel.

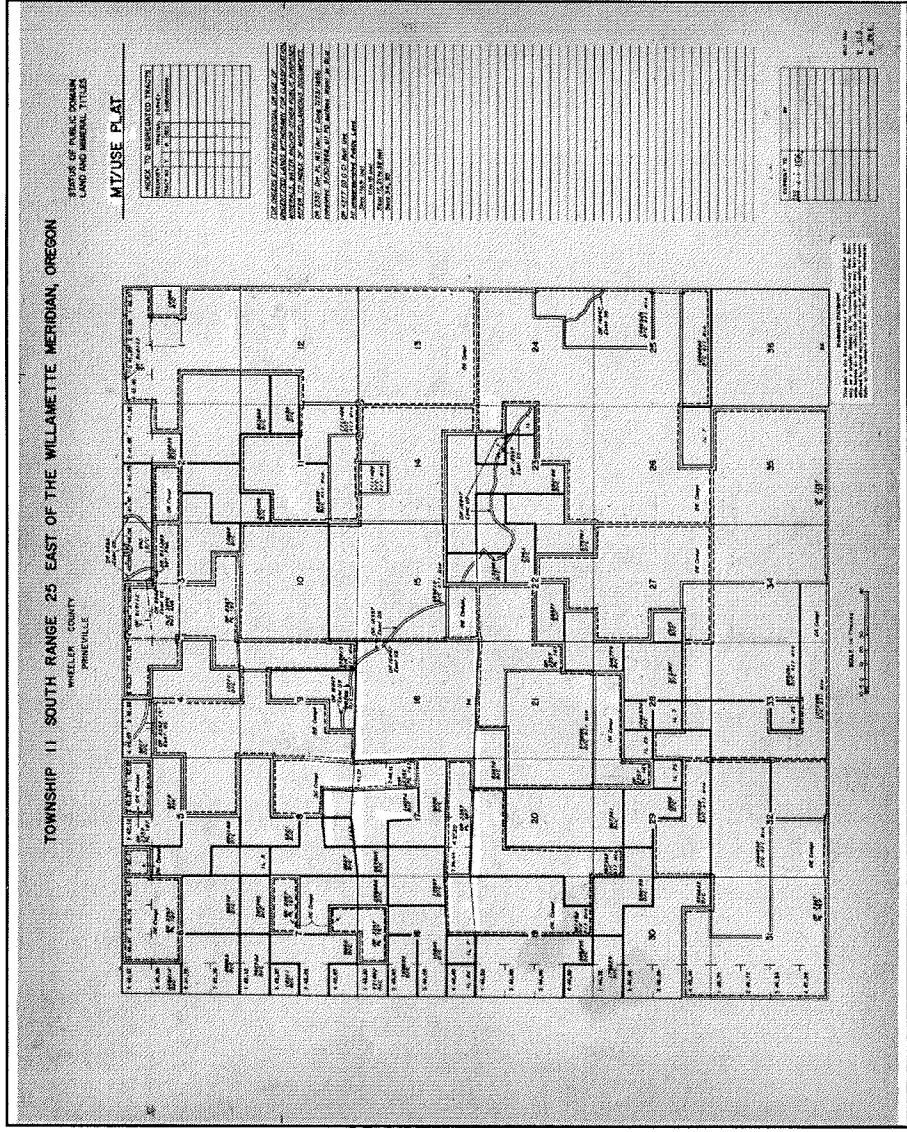
**Morris**- All of these roads are used annually by the permittee on a 4 wheeler.

**Smith**- Some of the roads have grown over due to lack of use.

**Welch**- The roads for administrative use needed for maintenance of range improvements. BLM will maintain these roads.

**Phelps**- Corner to corner parcels are not considered to be contiguous.

**Zancanella**-It has a planned paleo ACEC.



Sheet Rock on A

STATUS OF PUBLIC DOMAIN  
LAND AND MINERAL TITLES  
AND ACQUIRED LANDS

MT/USE PLAT

TRACT NO	T	R	SEC	SUBDIVISION

FOR RECORDS, REFER TO THE ORIGINAL OR USE OF UNOFFICIALLY FILED SURVEYS FOR ALL INFORMATION. ALL INFORMATION IS FOR INFORMATIONAL PURPOSES. REFER TO INDEX OF MISCELLANEOUS DOCUMENTS.

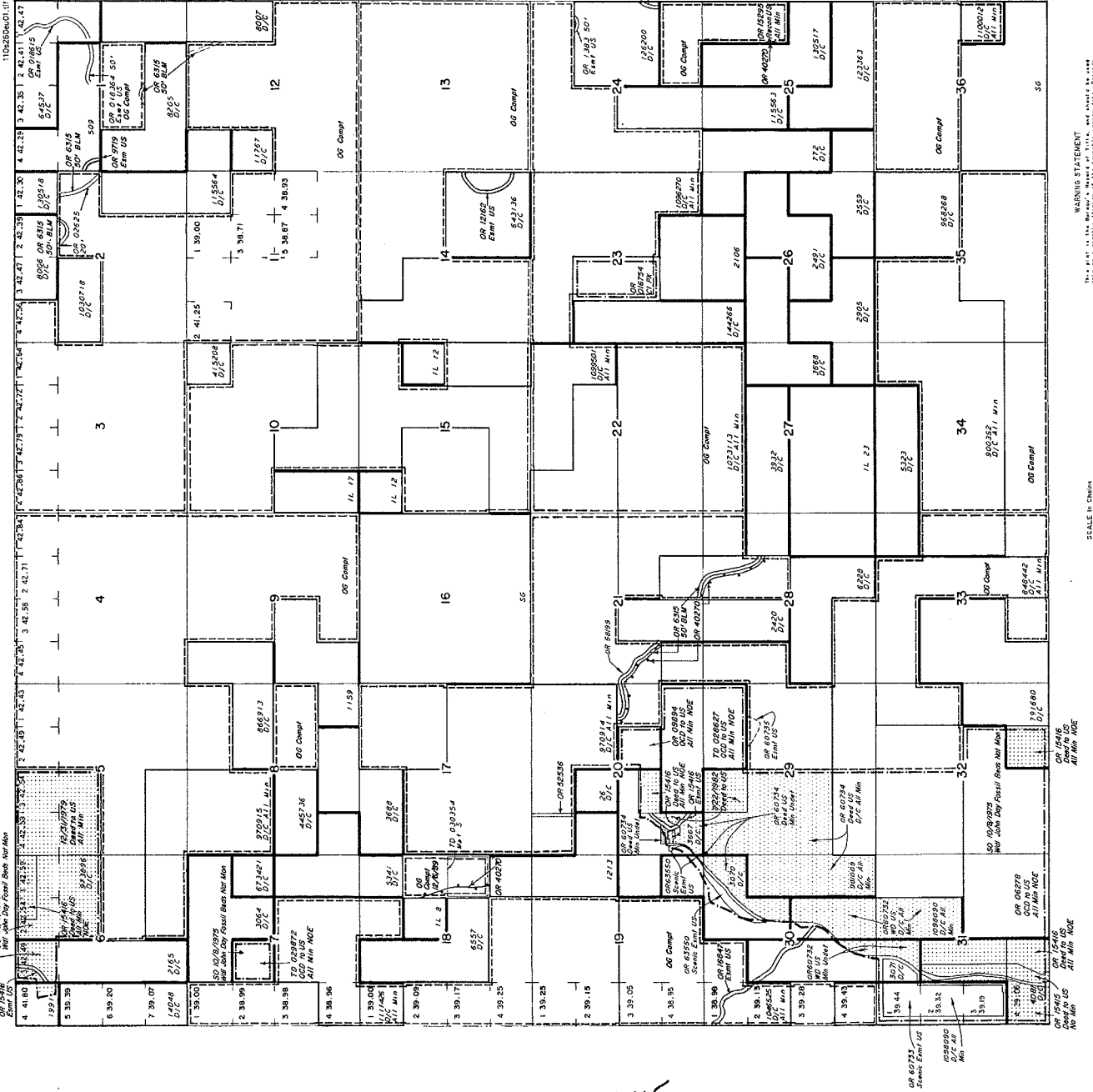
OP 4669 SO. O.C.I. Mt. Use

All unsegregated public land.

See 1/15 Incl. 17-24 Incl. 28-30, 30, 33-36

TOWNSHIP II SOUTH RANGE 26 EAST OF THE WILLAMETTE MERIDIAN, OREGON

PRINEVILLE DISTRICT  
GRANT COUNTY



WARNING STATEMENT  
This plat is based on the original survey on which the land is shown. It is not a warranty of title, and should not be relied upon as such. It is the responsibility of the purchaser to verify the accuracy of the information shown on this plat by a professional surveyor.



Sheet Rock on A

TOWNSHIP 12 SOUTH RANGE 25 EAST OF THE WILLAMETTE MERIDIAN, OREGON  
 WHEELER COUNTY  
 PRINEVILLE

STATUS OF PUBLIC DOMAIN  
 LAND AND MINERAL TITLES

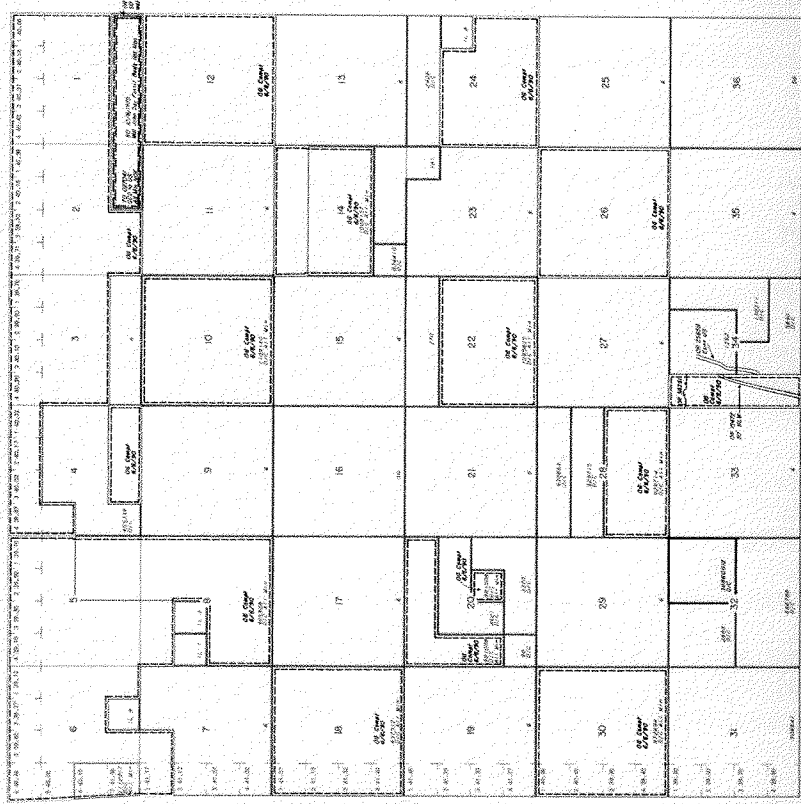
MT/USE PLAT

TRACT NO.	ACRES	OWNER
1		
2		
3		
4		
5		
6		
7		
8		
9		
10		
11		
12		
13		
14		
15		
16		
17		
18		
19		
20		
21		
22		
23		
24		
25		
26		
27		
28		
29		
30		
31		
32		
33		
34		
35		
36		

THIS PLAT IS A PRELIMINARY PLAT OF THE LANDS OF THE UNITED STATES IN WHEELER COUNTY, OREGON, AND IS SUBJECT TO THE PROVISIONS OF THE LANDS AND MINERAL TITLES ACT, 30 U.S.C. 2801-2809, AND THE REGULATIONS THEREUNDER. THE PLAT IS SUBJECT TO THE PROVISIONS OF THE LANDS AND MINERAL TITLES ACT, 30 U.S.C. 2801-2809, AND THE REGULATIONS THEREUNDER. THE PLAT IS SUBJECT TO THE PROVISIONS OF THE LANDS AND MINERAL TITLES ACT, 30 U.S.C. 2801-2809, AND THE REGULATIONS THEREUNDER.

THE PLAT IS SUBJECT TO THE PROVISIONS OF THE LANDS AND MINERAL TITLES ACT, 30 U.S.C. 2801-2809, AND THE REGULATIONS THEREUNDER. THE PLAT IS SUBJECT TO THE PROVISIONS OF THE LANDS AND MINERAL TITLES ACT, 30 U.S.C. 2801-2809, AND THE REGULATIONS THEREUNDER. THE PLAT IS SUBJECT TO THE PROVISIONS OF THE LANDS AND MINERAL TITLES ACT, 30 U.S.C. 2801-2809, AND THE REGULATIONS THEREUNDER.

TRACT NO.	ACRES	OWNER
1		
2		
3		
4		
5		
6		
7		
8		
9		
10		
11		
12		
13		
14		
15		
16		
17		
18		
19		
20		
21		
22		
23		
24		
25		
26		
27		
28		
29		
30		
31		
32		
33		
34		
35		
36		

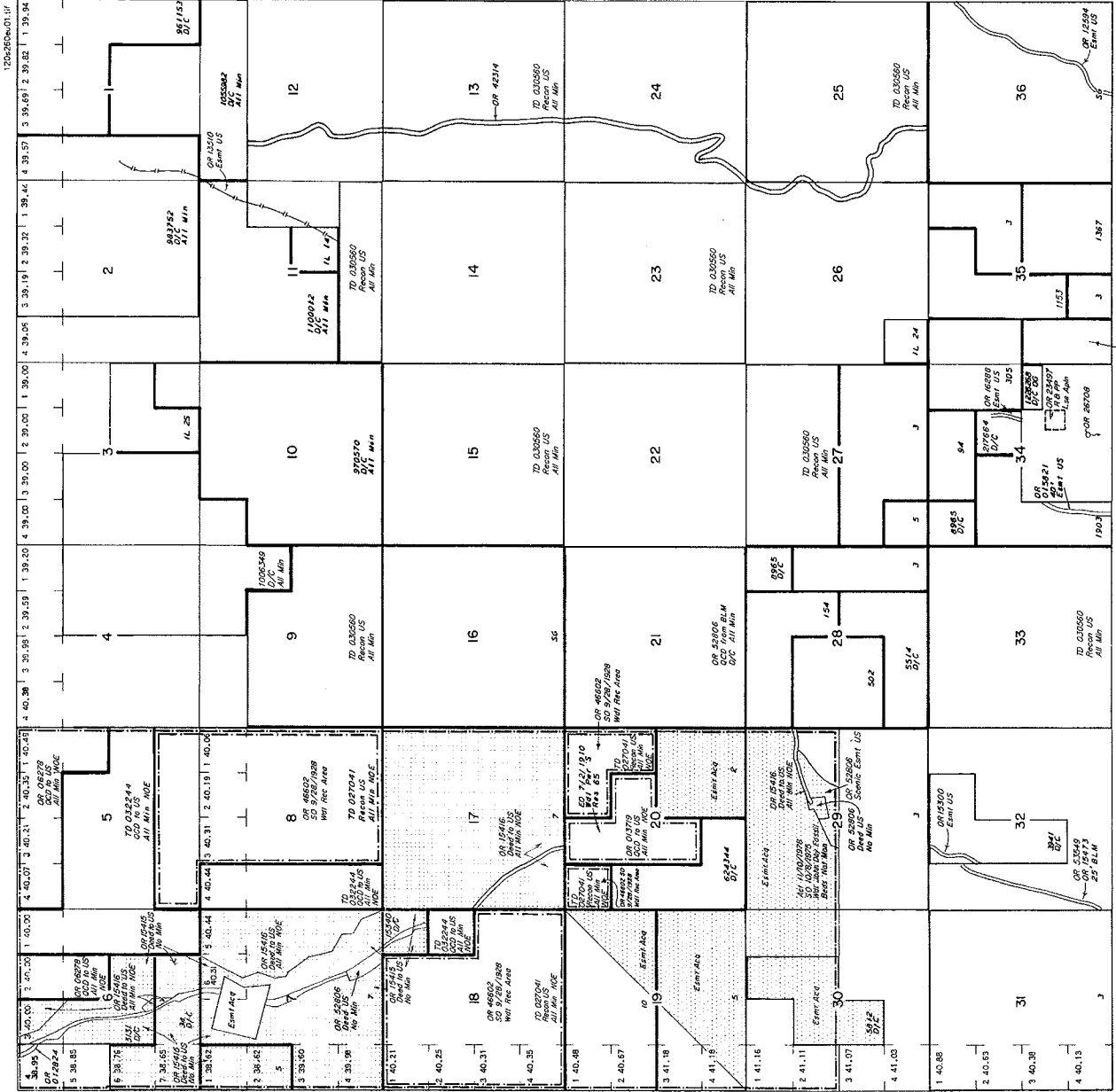


SCALE OF FEET  
 0 10 20 30 40 50

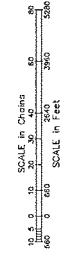
WHEELER COUNTY, OREGON  
 PRINEVILLE

TOWNSHIP 12 SOUTH RANGE 26 EAST OF THE WILLAMETTE MERIDIAN, OREGON

PRINEVILLE DISTRICT  
GRANT COUNTY



WARNING STATEMENT  
This is not a survey. It is a map of the land and mineral titles and acquired lands within the Willamette Meridian, Oregon, Grant County, Prineville District, Township 12 South, Range 26 East. It is based on the original survey of the land and mineral titles and acquired lands within the Willamette Meridian, Oregon, Grant County, Prineville District, Township 12 South, Range 26 East. It is not a survey and should not be used for any purpose other than for general information.

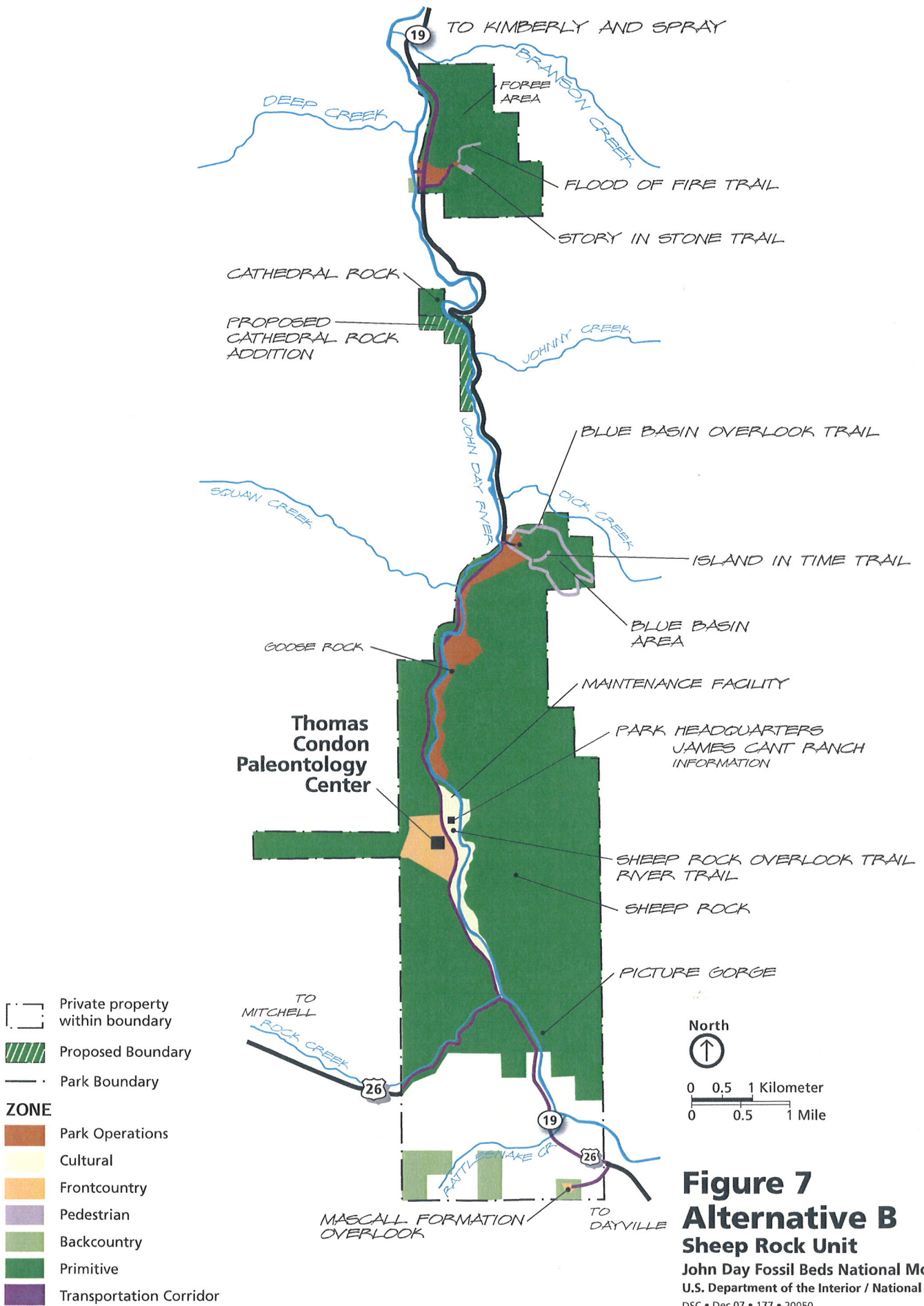


FILE REF: 120626000101  
CONVERT .JPG: 07/04/2008 BY: H. GREN  
LAST UPDATE: 05/09/2008 BY: R. LOGAN  
POSTED TO PUBLIC RECORDS: 05/15/2008  
SURVEYED TOWNSHIP  
GDSB MAD 83 CURRENT TO  
PROJECTION: N/A  
COORDINATE ELEVATION: N/A  
SOURCE FOR METES & BOUNDS: N/A  
NOTES  
USE PLAT: LSH Min  
T. 12 S.  
R. 26 E.

STATUS OF PUBLIC DOMAIN  
LAND AND MINERAL TITLES  
AND ACQUIRED LANDS  
MT/USE PLAT

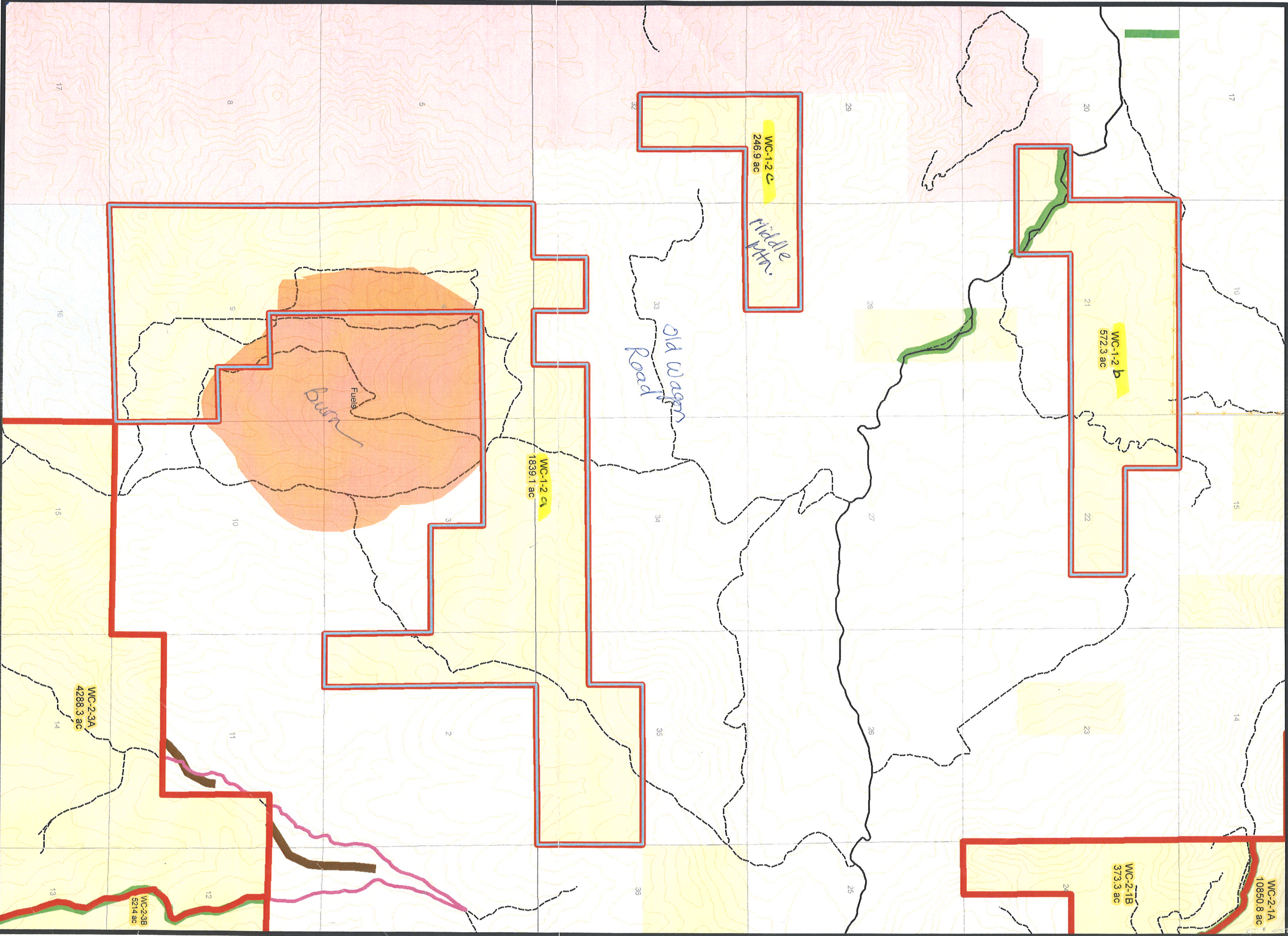
RESURVEY	ORIGINAL SURVEY	TRACT NO.	T	R	SEC.	SUBDIVISION

TOP CREEPS AFFECTING DISPOSAL OR USE OF  
UNIDENTIFIED LANDS WITHIN THIS PLAT CLASSIFICATION  
WHERE APPLICABLE TO OTHER PUBLIC RECORDS  
REFER TO INDEX OF UNRECORDED DOCUMENTS  
P.L.O. 1189 Pm. S. Rev. 65 Oper. 12. Entry. Sub. 1 b.  
Sec. 24 EPA.  
Sec. 20. SWANSEY, E.A.M.H., NE 1/4 34  
OR 53723 OGD US Acc. Innde  
Sec. 7. 19. 29. MBH 860.12. 4c.  
OR 60736 Deed US Acc. Innd Min. Under  
Sec. 6. MBB SE 1/4 10. 12. 3. 4c.



**Figure 7**  
**Alternative B**  
**Sheep Rock Unit**

John Day Fossil Beds National Monument  
 U.S. Department of the Interior / National Park Service  
 DSC • Dec 07 • 177 • 20050



- Selected Inventory Unit
  - Inventory Unit
  - Wilderness Study Areas
  - BLM
  - US Forest Service
  - National Park Service
  - State
  - Private or Undeveloped
  - FS roadless areas
  - FS Wilderness
- 
- Public Access - Internal Designations
  - US County, State and Local Roads
  - Interim Road
  - Interstate Highway
  - Interim Trail
  - US Highway
  - To Private
  - Admin Use Only
  - Build New Road
  - BLM Maintained Roads
  - State Highway
  - Forest Service Roads
  - Right of Way
  - Easement
  - Municipal Road
  - Forest Service Roads
  - Unknown Status
  - Arterial Road
  - Collector Road
  - Local Road
- 
- Rivers
  - Creeks
  - Material Resources
  - Water Points
  - Fences
  - Powerlines
  - Treatments
  - Culvert
  - Gate
  - Sign
  - Natural Barrier
  - Cattle Guard
  - Ford
  - End of Road
  - Pipe
  - Washout

**WC-1-2**

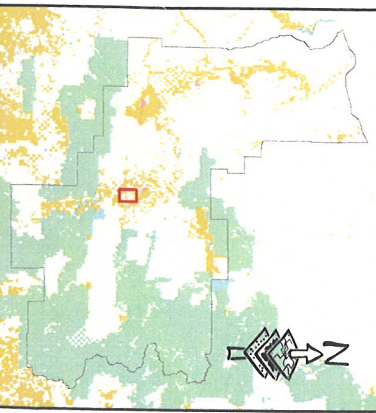
**WILDERNESS CHARACTER INVENTORY**

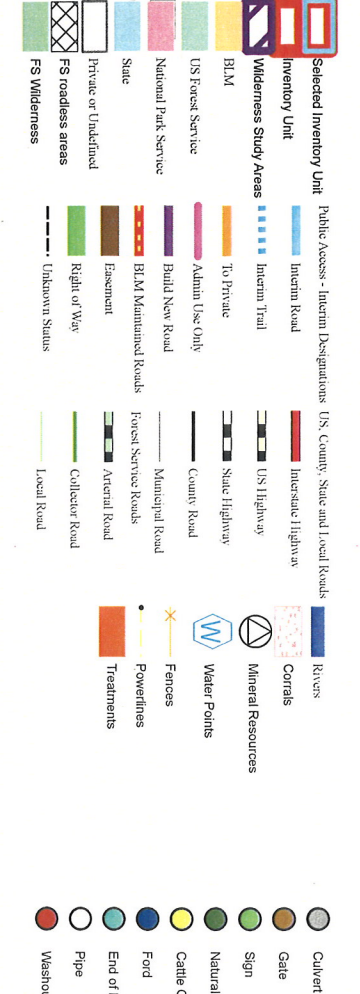
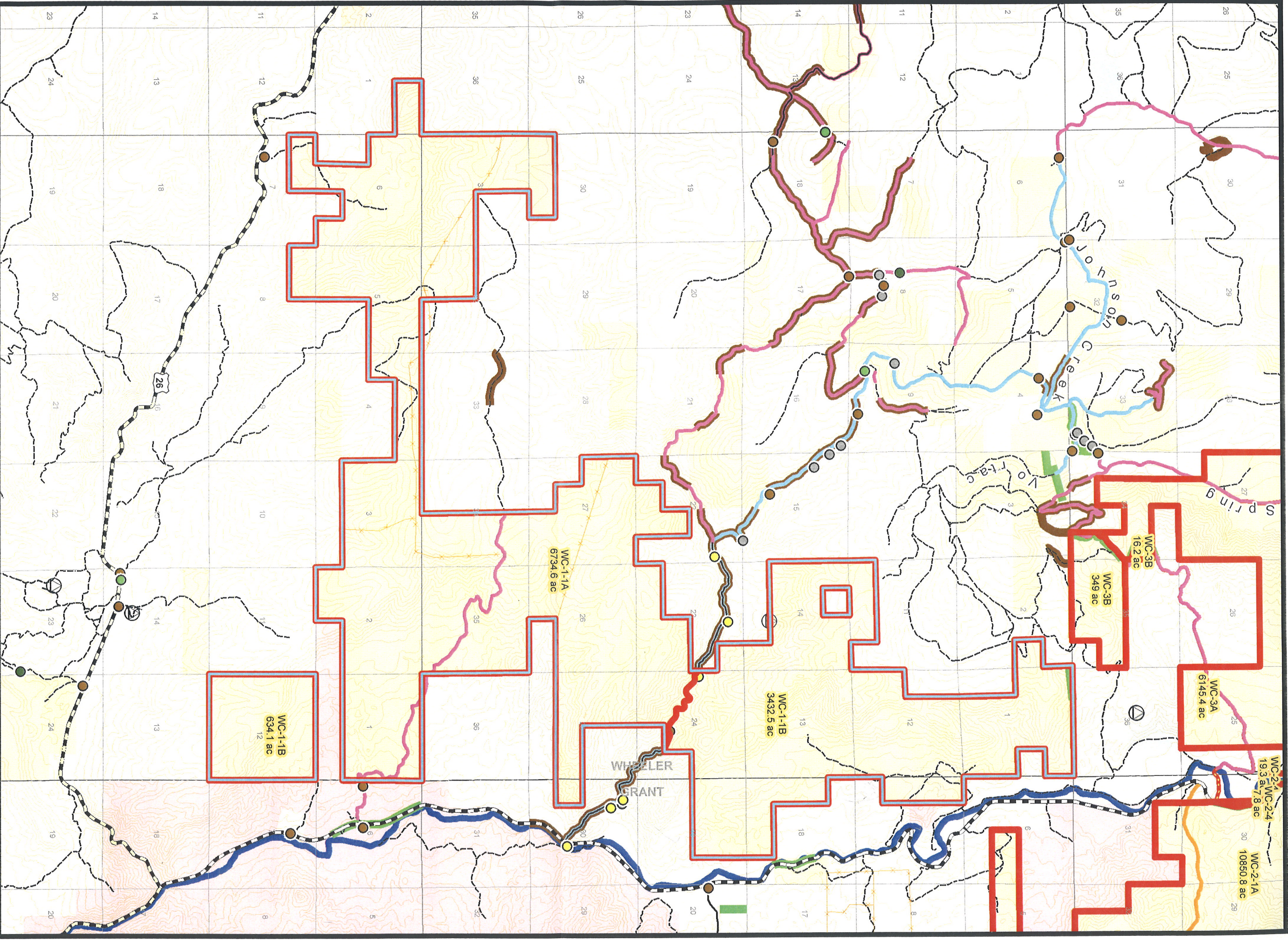
U.S. DEPARTMENT OF THE INTERIOR  
Bureau of Land Management  
PRINEVILLE DISTRICT  
5030 NE Third Street  
Prineville, OR 97754  
(541) 416-6700

Last Modified: 9/12/2007 1:07:59 PM

No warranty is made by the Bureau of Land Management as to the accuracy, reliability, or completeness of these data for individual or aggregate use. Information may not meet National Map Accuracy Standards. This product was developed through digital means and may be updated without notification.

0 0.25 0.5 0.75 1 Miles





**WC-1-1**

**WILDERNESS CHARACTER INVENTORY**

0 0.5 1 1.5 2 Miles

U.S. DEPARTMENT OF THE INTERIOR  
Bureau of Land Management  
PRINEVILLE DISTRICT  
5030 NE Third Street  
Prineville, OR 97754  
(541) 416-6700

Last Modified: 9/12/2007 1:07:59 PM

No warranty is made by the Bureau of Land Management as to the accuracy, completeness, or timeliness of the information presented on this map. This information may not meet National Map Accuracy Standards. This product was developed through digital means and may be updated without notification.

