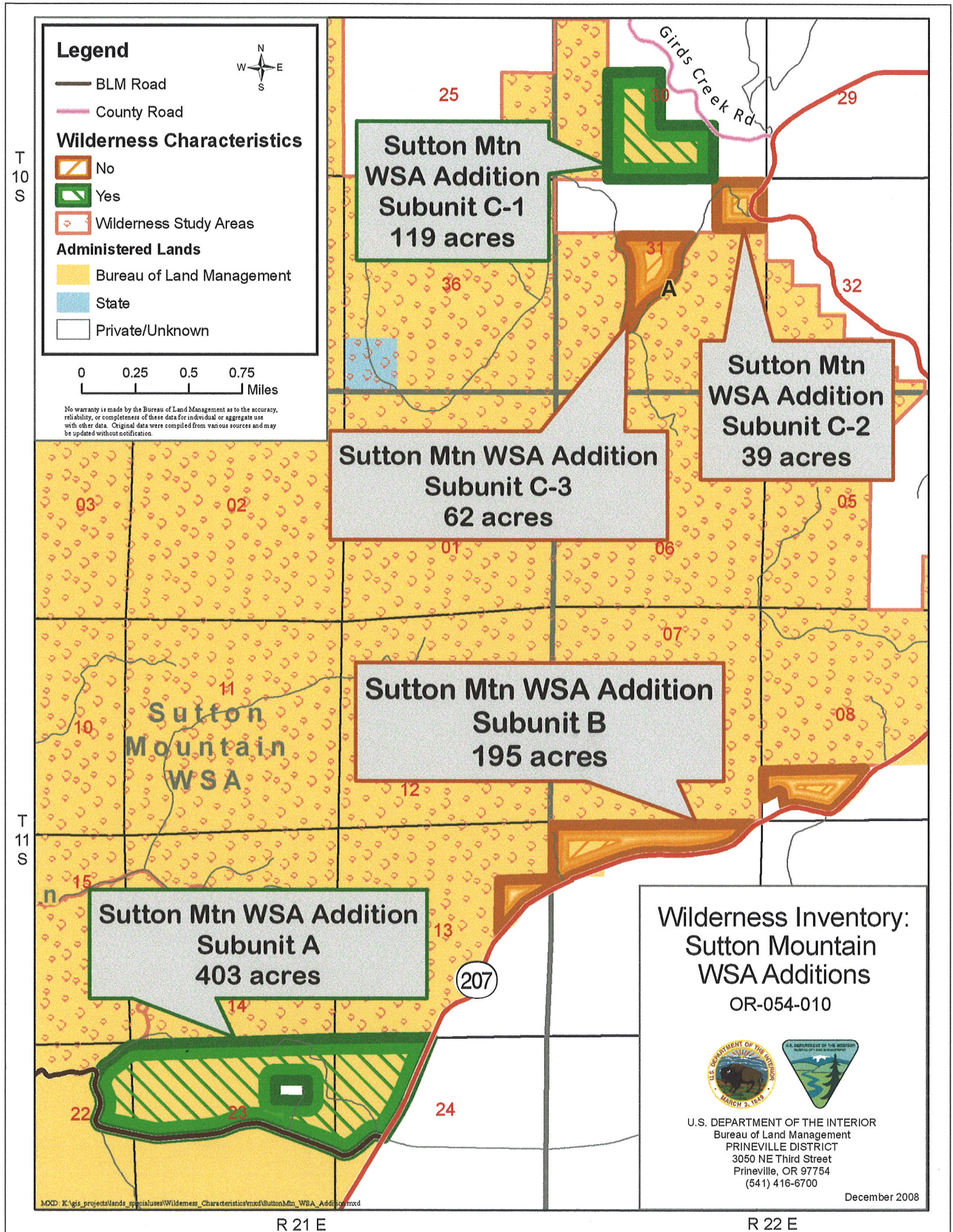


# Map 1



OR-054-010/ Sutton Mountain WSA Addition Inventory Unit

**2008 John Day Basin Wilderness Character Evaluation Form**

**Wilderness Character Evaluation For: OR-054-010/ Sutton Mountain WSA Additions Inventory Unit**

**1. Previous BLM wilderness inventory?**

No \_\_\_\_\_ Yes X Partial \_\_\_\_\_

a) Inventory Source: Sutton Mountain Acquired Lands Wilderness Inventory, Bureau of Land Management, Sutton Mountain Coordinated Resource Management Plan (CRMP), March 1995, and Bureau of Land Management Sutton Mountain Coordinated Resource Management Plan (CRMP) Decision Record, March 1996.

b) Inventory Unit Name(s)/Number(s): Sutton Mountain/OR-5-84

c) Map Name(s)/Number(s): N/A

d) BLM District(s)/Field Office(s): Prineville/Central Oregon Resource Area

Unit#/Name	Size (historic acres)	Natural Condition? Y/N	Outstanding Solitude? Y/N	Outstanding Primitive & Unconfined Recreation? Y/N	Supplemental Values? Y/N
OR-5-84 Sutton Mountain	29,400	Y	Y	Y	Y

**Note: Additional lands within this unit (Subunit C in 2008 inventory) were included in the Sutton Mountain Roadless Area review completed by the Central Oregon Resource Area, Prineville District BLM, in 1994. At that time the lands were dropped from further review and not carried forward to a wilderness inventory process.**

**2. New Wilderness Characteristic Review**

Private Recommendation: Yes \_\_\_\_\_ No X by \_\_\_\_\_ Date \_\_\_\_\_

Results of BLM Analysis: (separate by subunit if appropriate)

Unit#/Name	Size (acres)	Natural Condition? Y/N/NA	Outstanding Solitude? Y/N/NA	Outstanding Primitive & Unconfined Recreation?	Supplemental Values? Y/N/NA

OR-054-010/ Sutton Mountain WSA Addition Inventory Unit

				Y/N/NA	
OR-054-010 Sutton Mountain WSA Addition Subunit A (South)	403	Y	Y	Y	Y
OR-05-010 Sutton Mountain WSA Addition Subunit B (Southeast)	195	N	N/A	N/A	N/A
OR-05-010 Sutton Mountain WSA Addition Subunit C (East)	220	Y (C-1) N (C-2) N/A (C-3)	Y (C-1) N/A (C-2,C-3)	Y (C-1) N/A (C-2,C-3)	Y(C-1) N/A (C-2,C-3)

Conclusion

Check One:

Area reviewed lacks sufficient size and does not meet one of the exceptions for small size.

The area-or a portion of the area-has wilderness character.

The area does not have wilderness character.

(1) Describe current conditions: (Include boundary features, land ownership, size, location, topography, vegetation features and summary of major human uses/activities).

The lands are located in Wheeler County, Oregon, north of US Highway 26, 3 to 7 miles north of the town of Mitchell. The 2008 inventory unit consists of three (3) separate subunits, each adjacent to a different part of Sutton Mountain Wilderness Study Area.

**Original 1994 Inventory**

All of the lands within the inventory unit are public lands and most were acquired by the BLM in the Sutton Mountain Land Exchange, completed in 1992. In 1994, BLM conducted a wilderness inventory of these lands as directed by Section 202 of FLMPA as part of the Sutton Mountain Acquired Lands Wilderness Inventory. The inventory results were printed in the Sutton

## OR-054-010/ Sutton Mountain WSA Addition Inventory Unit

Mountain Coordinated Resource Management Plan (CRMP) (BLM, March 1995), and the Sutton CRMP Decision Record (BLM, March 1996).

The 1994 inventory found that some portions of the original inventory unit were unnatural and these portions were dropped from further consideration as wilderness. The lands that were dropped are now being re-inventoried in 2008. The 1994 inventory described the lands being dropped as:

(Subunit A in 2008 inventory) “Ranch Remains, gravel quarries, a remote weather station, a road and an area used by off-road vehicles exists on the southern edge of the unit.”

(Subunit B in 2008 inventory.) “A crested wheat seeding, ranch remains, drill hole, car camping areas, and gravel quarry exist on the southeastern edge of the unit adjacent of State Highway 207.”

Additional lands within this unit (Subunit C in 2008 inventory) were included in the Sutton Mountain Roadless Area review completed by the Central Oregon Resource Area, Prineville District BLM, in 1994. At that time the lands were dropped from further review and not carried forward to a wilderness inventory process.

### 2008 Inventory

**Subunit A (South)** is located adjacent to the south boundary of Sutton Mountain WSA and is approximately 403 acres in size. The subunit is bordered on the north by the WSA, on the west and south by a BLM gravel road (The Old Logging Road # 7548), and on the east by a paved highway (State Route 207). Within the subunit is a 9 acre private land in-holding located in Section 23.

**Subunit B (Southeast)** is located adjacent to the east boundary of Sutton Mountain WSA. The subunit is 195 acres in size. The subunit is bordered on the north and west sides by the WSA, and on the south and east sides by State Route 207.

**Subunit C (East)** is located adjacent to the east boundary of Sutton Mountain WSA. This subunit is approximately 220 acres in size and consists of three separate parcels which each border the WSA and a 118 acre private land parcel. The subunit is bordered on the north by private lands and on the west by a combination of private lands and the WSA. The subunit is bordered on the south by the WSA and on the east by a combination of private lands, State Route 207, and a Wheeler County paved road (Gird’s Creek Rd.).

**Location of Unit A:** Portions of or all public Lands in T 11 S., R 21 E., Sections 23, 24

**Location of Unit B:** Portions of or all public Lands in T 11 S., R 22 E., Sections 8, 18

**Location of Unit C:** Portions of or all public Lands in T 10 S., R 22 E., Sections 30, 31

### Description:

**Subunit A** is a south facing slope of juniper, grass, and erosive soils that flanks an east-west ridge between Sutton Mountain WSA and The Old Logging Road. Many small draws and gullies bisect the unit as they drop from the ridge down to the road. The southwest boundary of

## OR-054-010/ Sutton Mountain WSA Addition Inventory Unit

the WSA is The Old Logging Road. The southeast boundary of the WSA leaves the road and follows the section line to the north of the road in the vicinity of the ridge. Subunit A includes the lands between the east end of The Old Logging Road and the southern WSA boundary. Vegetation includes Idaho fescue, bluebunch wheatgrass, sagebrush, juniper and cheatgrass.

No cultural inventories have been conducted within Subunit A. It is known that the Dalles-Canyon City Military/Wagon road route is west and adjacent, but outside, the unit. The General Land Office survey map of 1873 exhibits a road route passing through Section 23 in a SW-NE direction. Based on the Historical Index, various portions of Section 24 were filed on between 1895 and 1916 as homestead entries. Section 23 was claimed under a Military Wagon road patent (i.e., The Dalles-Canyon City military wagon road) in 1900.

In Subunit A several of the man-made features listed in the 1994 inventory have changed. The gravel quarry mentioned in the 1994 inventory is located on a 9 acre in-holding, and has been inactive for many years. The weather station mentioned was removed by BLM. The ranch remains have not been located. As mentioned in the 1994 inventory, the area continues to be used by off-road vehicles, even though the area is closed to motorized vehicle use by the 1996 Sutton Mountain Coordinated Resource Management Plan. This subunit is popular with hunters who like to stage a vehicle along The Old Logging Road and return to it after hunting the WSA.

**Subunit B** includes a large flat just west of State Route 207 which is partially grass and partially clay/mud flats. Hunters use the flat for parking and the treed areas surrounding the flat for camping in association with hunting. The man-made features listed in the 1994 inventory, "A crested wheat seeding, ranch remains, drill hole, car camping areas, and gravel quarry" each still exist in the subunit. Vegetation includes Idaho fescue, bluebunch wheatgrass, crested wheat, cheatgrass, sagebrush, rabbit brush and juniper.

No cultural inventories have been conducted within Subunit B. The same road route present in Subunit A crosses through Section 18, T. 11S, R. 22E on the 1873 General Land Office survey map. The Historical Index indicates that portions of the unit were patented under the Homestead Entry in 1919, but subsequently returned to the US government in 1987 through the Sutton Mountain land exchange. The presence of a corral and introduced tree species at the east end of the unit attest to the farming/ranching land use in the immediate vicinity. The aerial images of this location suggest that the flat north of the paved road were cultivated or cleared in the past, probably related to post-1919 occupation. This is the headwaters of Meyers Canyon.

**Subunit C** includes lands which were originally dropped from wilderness consideration because their location made it difficult to manage the lands as wilderness. The subunit consists of three separate parcels in close proximity to one another (C-1, C-2, and C-3), which border the WSA and also surround a 118 acre parcel of private land. If C-1, C-2, and C-3 were part of the WSA, the private land parcel would become an inholding very near the edge of the WSA. C-1 (119 acres) consists of a steep grass and juniper slope that begins along the paved Girds Creek County Road and heads uphill to the private land parcel. C-2 (39 acres) includes an agricultural field and corral, paved State Route 207, a section of Gird's Creek that runs adjacent to the highway, and a gated non-motorized trailhead that serves the WSA. Hunters, hikers and equestrians use C-2 for camping, parking and staging as they access the WSA. C-3 (62 acres) is separated from the WSA by a dirt road (see Road Analysis Form) that accesses the west end of the private parcel (no ROW). Vegetation in C-1 and C-3 includes Idaho fescue, bluebunch wheatgrass, sagebrush,

OR-054-010/ Sutton Mountain WSA Addition Inventory Unit

and juniper. Vegetation in C-3 includes field grasses and noxious weeds in and around the old agricultural field, and willow along Gird's Creek.

A portion of Subunit C has been intensively inventoried (cultural) for a fuels project. No cultural resources were observed on public land. However, the homestead location of H. Wheeler (Wheeler County namesake) is located immediately adjacent to the unit (GLO 1881). There is also a single grave, fenced cemetery adjacent to but outside the unit that is not related to the Wheeler homestead. Much of the unit is located on steep north and east slopes.

**Subunits A, B and C:**

Wildlife populations of all three subunits include elk, mule deer, cougar, bobcat, chukar, golden eagle, prairie falcon, California quail, meadowlarks and mountain bluebird.

All three subunits are authorized for commercial grazing under BLM permits (Circle Bar Allotment #2531, Carroll Rim Allotment #2590, and Girds Creek Allotment #2516). A portion of the lands in Subunit A and B (Section 8) have been leased for potential Oil and Gas development (9/05/2001). Recreation uses of the three subunits include hiking, horseback riding, hunting, and nature study.

**Subunit C, Parcel C-3 is separated from the WSA by a road. At 62 acres in size, it lacks sufficient size to be considered as wilderness and does not meet one of the exceptions for small size. For this reason Subunit C-3 will not be discussed further in this document.**

(2) Is the unit in a natural condition?

Yes  X  No \_\_\_\_\_ NA \_\_\_\_\_

Describe:

A portion of the inventory unit is in a natural condition. Subunit A appears to be in a natural condition and affected primarily by nature. Subunit B is not in a natural condition as it contains a crested wheat seeding, ranch remains, drill hole, car camping areas, and gravel quarry. Subunit C-1 appears to be in a natural condition. Subunit C-2 is not in a natural condition as is contains a paved highway, agricultural fields, a gated road and trailhead with parking/camping area.

(3) Does the unit have outstanding opportunities for solitude?

Yes  X  No \_\_\_\_\_ NA \_\_\_\_\_

Description:

A portion of the inventory unit has outstanding opportunities for solitude. Subunit A and subunit C-1, when considered in conjunction with the adjacent Sutton Mountain WSA, would provide outstanding opportunities for solitude.

(4) Does the unit have outstanding opportunities for primitive and unconfined recreation?

Yes  X  No \_\_\_\_\_ NA \_\_\_\_\_

Description:

A portion of the inventory unit has outstanding opportunities for primitive and unconfined recreation. Subunit A and C-1, when considered in conjunction with the adjacent Sutton Mountain WSA, provide outstanding opportunities for hunting, hiking, and nature study.

OR-054-010/ Sutton Mountain WSA Addition Inventory Unit

(5) Does the unit have supplemental values?

Yes   X   No        NA       

Description:

The supplemental values of Subunit A and C-1 are similar to those found in the adjacent WSA, including paleontological and historical resources, several special status plant species, and outstanding scenic areas.

OR-054-010/ Sutton Mountain WSA Addition Inventory Unit

**Prepared by:**

Team Members: (Names, Titles, Date)

Initial Review Aug. 14, 2007 by: Heidi Mottl (Recreation/Wilderness), Teal Purrington (NEPA/Planning), Dorothy Thomas (GIS), Anna Smith (Hydrology), Mike Tietmeyer (Range), Dan Tippy (Assistant Field Manager), Rick Demmer (Riparian), Monte Kuk (Wildlife), Robert Vidourek (Forestry), Mike Williams (Planning), Berry Phelps (Recreation), Craig Obermiller (Range), John Morris (Fish), Dana Cork (Transportation), Christina M. Welch (Field Manager), Don Tschida (Fire), Gavin Hoban (GIS), John Zancanella (Cultural), JoAnne Armson (Plants).

Realty/Mineral Records researched by Timothy Finger, BLM Wilderness Specialist on detail from Richland, UT, October, 2008.

**Approved by:**

Christina M. Welch  
Field Manager

Oct. 31, 2007  
Date

*This form documents information that constitutes an inventory finding on wilderness characteristics. It does not represent a formal land use allocation or a final agency decision subject to administrative remedies under either 43 CFR parts 4 or 1610.5-2.*



OR-054-010/ Sutton Mountain WSA Addition Inventory Unit

PURPOSE:

This addendum provides signatory authority across gaps in supervisory oversight in the preparation process.

DISCUSSION:

Further study has been conducted to validate the findings approved by the original signator, Christina Welch. As the new Field Manger for the Resource Area and Ms. Welch's replacement I have been briefed by the specialists assigned on the contents and underlying rationale for the findings contained in this document. I approve these findings with my signature below.

APPROVED BY:

  
SIGNATURE

Thursday, July 08, 2010

**John Day Basin RMP Road Analysis Form**

(Factors to consider when determining whether a route is a road for wilderness inventory purposes.)

**Wilderness Inventory Area Name and Number (UNIT\_ID): Sutton Mountain Wilderness Study Area Additions (OR-054-010)**

**Route Name and/or Identifier: Carroll Rim Road (Labeled at "A" on Map 1)**

**I. LOCATION:** Please refer to attached map and BLM corporate data (GIS). Route begins in T 10 S, R 22 E, Section 31, NE ¼ of the NE 1/4, and travels approximately 1/4 mile on BLM land before accessing private land. This route consists of one long switchback that climbs a steep hill and forms a triangular slice cut out of the WSA (see map). The route is gated and closed to motorized vehicles in an effort to prevent unauthorized motor vehicle use in the WSA. Exceptions are made for BLM administrative use (including permittee use for livestock management purposes, with BLM authorization).

**II. CURRENT PURPOSE OF ROUTE:** Access to private property, administrative access for BLM, hiking and equestrian trail for recreation users.

**III. ROAD RIGHT-OF-WAY:**

Yes \_\_\_ No X Unknown \_\_\_

**IV. CONSTRUCTION**

Yes X No \_\_\_\_\_

Examples:

Paved \_\_\_\_\_ Bladed X Graveled \_\_\_\_\_ Roadside Berms X  
Cut/Fill X Other \_\_\_\_\_

**V. IMPROVEMENTS**

Yes \_\_\_\_\_ No X

By Hand Tools \_\_\_\_\_ By Machine \_\_\_\_\_

Culverts \_\_\_ Stream Crossings \_\_\_ Bridges \_\_\_ Drainage \_\_\_ Barriers \_\_\_\_\_ Other \_\_\_\_\_

**VI. MAINTENANCE:**

OR-054-010/ Sutton Mountain WSA Addition Inventory Unit

A. Is there Evidence or Documentation of Maintenance using hand tools or machinery?

Yes  No

Hand Tools (Y/N)  Machine (Y/N)

When burned trees blew down over the road they were cleared with a chain saw by BLM.

Explain: See BLM FAMS data in reference section. Is the route scheduled to receive maintenance? No

B. If route is in good condition, but there is no evidence of maintenance, would mechanical maintenance with hand tools or machines be approved by BLM in the event this route became impassable?

Yes  No  N/A

Comments: To provide administrative vehicle access to the WSA boundary, it is possible that this route would be maintained by BLM if it became impassable.

**VII. REGULAR AND CONTINUOUS USE:**

Yes  No

**VIII. CONCLUSION:**

To meet the definition of a road, items IV or V, *and* VI-A or B, *and* VII must be checked yes.

Road: Yes  No

Explanation: To provide administrative vehicle access to the WSA boundary, it is possible that this route would be maintained by BLM if it became impassable.

Evaluator(s): Heidi Mottl Date: 9/30/07

\* **road:** An access route which has been **improved and maintained by mechanical means** to insure **relatively regular and continuous use**. A way maintained solely by the passage of vehicles does not constitute a road.

a. **“Improved and maintained”** – Actions taken physically by people to keep the road open to vehicle traffic. “Improved” does not necessarily mean formal construction. “Maintained” does not necessarily mean annual maintenance.

b. **“Mechanical means”** – Use of hand or power machinery or tools.

c. **“Relatively regular and continuous use”** – Vehicular use that has occurred and will continue to occur on a relatively regular basis. Examples are: access roads for equipment to

## OR-054-010/ Sutton Mountain WSA Addition Inventory Unit

maintain a stock water tank or other established water sources; access roads to maintained recreation sites or facilities; or access roads to mining claims.

**REFERENCES**

**Sutton Mountain WSA Addition Subunits A, B, C, and D**

**1. Realty program**

- a. Master Title Plats  
T 10 S., R 22.  
T 11 S., R 21 E., R 22 E.
- b. Executive Order (07/2/1910)
- c. BLM LR 2000 Record data.

**2. Mineral Program**

Public Law 167 (July 23, 1955). Restriction of use of Unpatented Mining Claims.  
43 CFR 3710  
BLM Oil and gas Leases 9/5/2001, 12/04/2002, 12/11/2003. *Closed.*

**3. GIS Program**

USGS National Map project  
BLM GIS data  
BLM Lower John Day River public lands map, June 1991

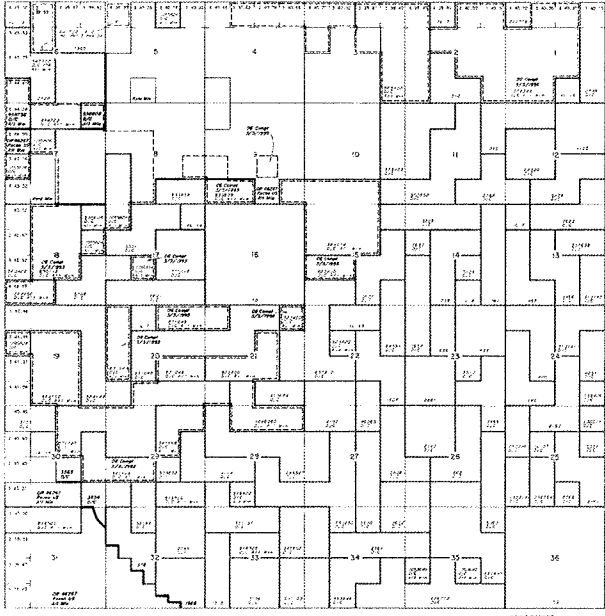
**The BLM has identified the following man-made features:**

A portion of the lands in Subunits A and B have been leased for potential Oil and Gas development (9/05/2001)

TOWNSHIP 10 SOUTH RANGE 22 EAST OF THE WILLAMETTE MERIDIAN, OREGON

WHEELER COUNTY  
PINEVILLE

STATUS OF PUBLIC DOMAIN  
LAND AND MINERAL TITLES



MT/USE PLAT

Table with columns for MT/USE and PLAT, containing various codes and identifiers for land parcels.

DEPARTMENT OF THE INTERIOR  
BUREAU OF LAND MANAGEMENT  
WHEELER COUNTY, OREGON  
PINEVILLE  
TOWNSHIP 10 SOUTH RANGE 22 EAST OF THE WILLAMETTE MERIDIAN  
STATUS OF PUBLIC DOMAIN LAND AND MINERAL TITLES  
This plat shows the status of public domain land and mineral titles in Wheeler County, Oregon, for Township 10 South, Range 22 East of the Willamette Meridian. The land is divided into sections, and the status of each section is indicated by the MT/USE PLAT code. The map also shows the boundaries of the sections and the location of the township and range.

# TOWNSHIP 11 SOUTH, RANGE 21 EAST, OF THE WILLAMETTE MERIDIAN, OREGON

## PRINEVILLE DISTRICT WHEELER COUNTY

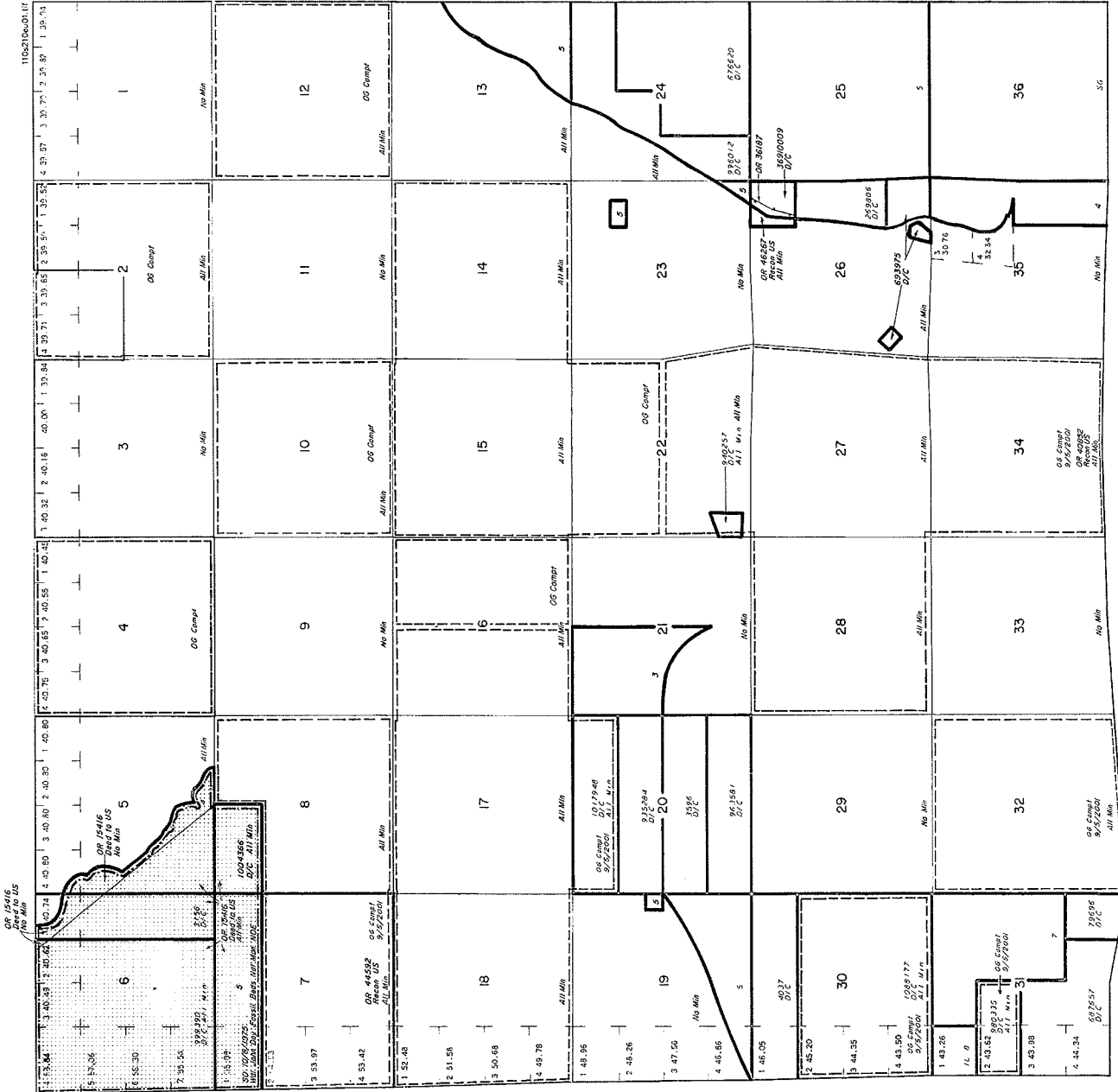
STATUS OF PUBLIC DOMAIN  
LAND AND MINERAL TITLES

### MT/USE PLAT

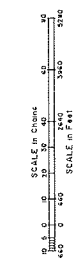
INDEX TO SEGREGATED TRACTS		RESURVEY		ORIGINAL SURVEY	
TRACT NO	T	R	SEC	SUBDIVISION	

FOR ORDERS AFFECTING DISPOSAL OR USE OF  
UNIDENTIFIED LANDS WITHIN THIS PLAT CLASSIFICATION  
MINERAL, WATER AND/OR OTHER PUBLIC PURPOSES  
REFER TO INDEX OF MISCELLANEOUS DOCUMENTS

OR 4377 SD O Cl Mail Use  
All unappropriated Public Land in Secs. 2, 4  
Section 10, W&A 2/21/09S Spgr from Min. Ltc B Per  
Sect 1-3, 3-16, 21, 22, 23  
Sutton Min. W&A 2/21/09S Spgr from Min. Ltc B Per  
Sect 1-3, 3-16, 21, 22, 23  
OR 48553 P/W R/L Pipe Line  
Sec 25, S 1/4 Sec 24



WARNING STATEMENT  
THIS IS A PUBLIC PLAT OF THE WILLAMETTE MERIDIAN, OREGON  
AND THE LANDS SHOWN ARE PUBLIC LANDS. THESE RIGHTS ARE  
NOT GUARANTEED. THE INFORMATION IS FOR INFORMATIONAL  
PURPOSES ONLY. THE INFORMATION IS NOT TO BE USED AS EVIDENCE  
IN ANY COURT OF LAW.



FILE REF	10120640111	AHHPROD/GTX RptmeCAD 6.0
CONVERT	APR 07/20/2001	BY R USDN
LAST UPDATE	08/23/2001	BY R USDN
POSTED TO PUBLIC RECORDS	08/28/2001	
SURVEYED TOWNSHIP		N/A
SURVEYED RANGE		N/A
IMAGE SOURCE	CURRENT TO	N/A
PROJECTION	N/A	N/A
ELEVATION	N/A	N/A
SOURCE FOR METES & BOUNDS	N/A	N/A
NOTES		

reduce

enlarge

reset

about/help

print plat

print screen

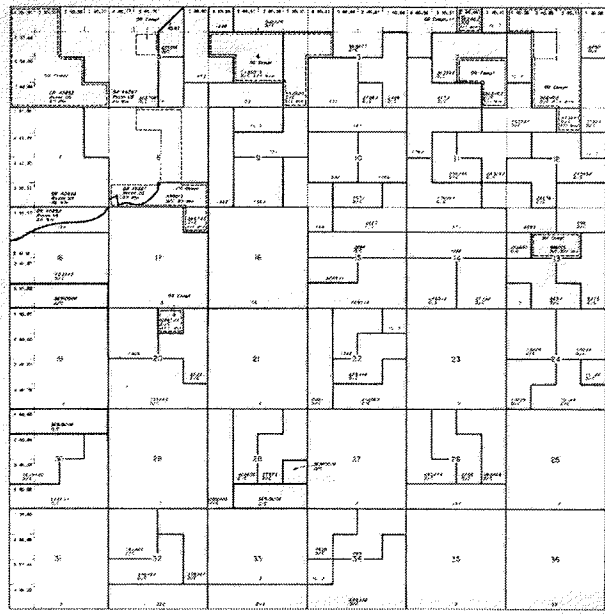
TOWNSHIP 11 SOUTH RANGE 22 EAST OF THE WILLAMETTE MERIDIAN, OREGON  
WHEELER COUNTY  
PENDLETON

STATUS OF PUBLIC DOMAIN  
LAND AND MINERAL TITLE

MT/USE PLAT

PLAT NO.	DATE	PLAT TYPE	PLAT NO.	DATE	PLAT TYPE

FOR THE PURPOSE OF PLACING THIS PLAT IN THE PUBLIC DOMAIN, THE BUREAU OF LAND MANAGEMENT HAS CONDUCTED A FIELD SURVEY TO DETERMINE THE ACCURACY OF THE PLAT. THIS SURVEY WAS CONDUCTED IN ACCORDANCE WITH THE REQUIREMENTS OF THE FEDERAL LAND MANAGEMENT ACT OF 1909, AS AMENDED.



TOTAL IN SQUARE FEET

TOTAL IN ACRES

PLAT NO.	DATE	PLAT TYPE



RUN TIME:

12:29 PM

DEPARTMENT OF THE INTERIOR  
BUREAU OF LAND MANAGEMENT

RUN DATE: 06/03/2010

Input Parameters for MC Geographic Report

System Id = MC

Admin State = OR

Geo State =

Mer Twp Ring =

Section =

Mtrs = 33 0100S 0220E 030, 33 0100S 0220E 031, 33 0110S 0210E 023, 33 0110S 0210E 024, 33 0110S 0220E 008, 33 0110S 0220E 018

Adm Agency Begins With

Aliquot Part contains

Case Disp Txt = ACTIVE, CLOSED, PENDING, VOID

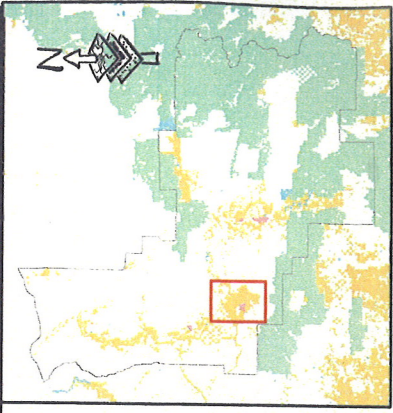
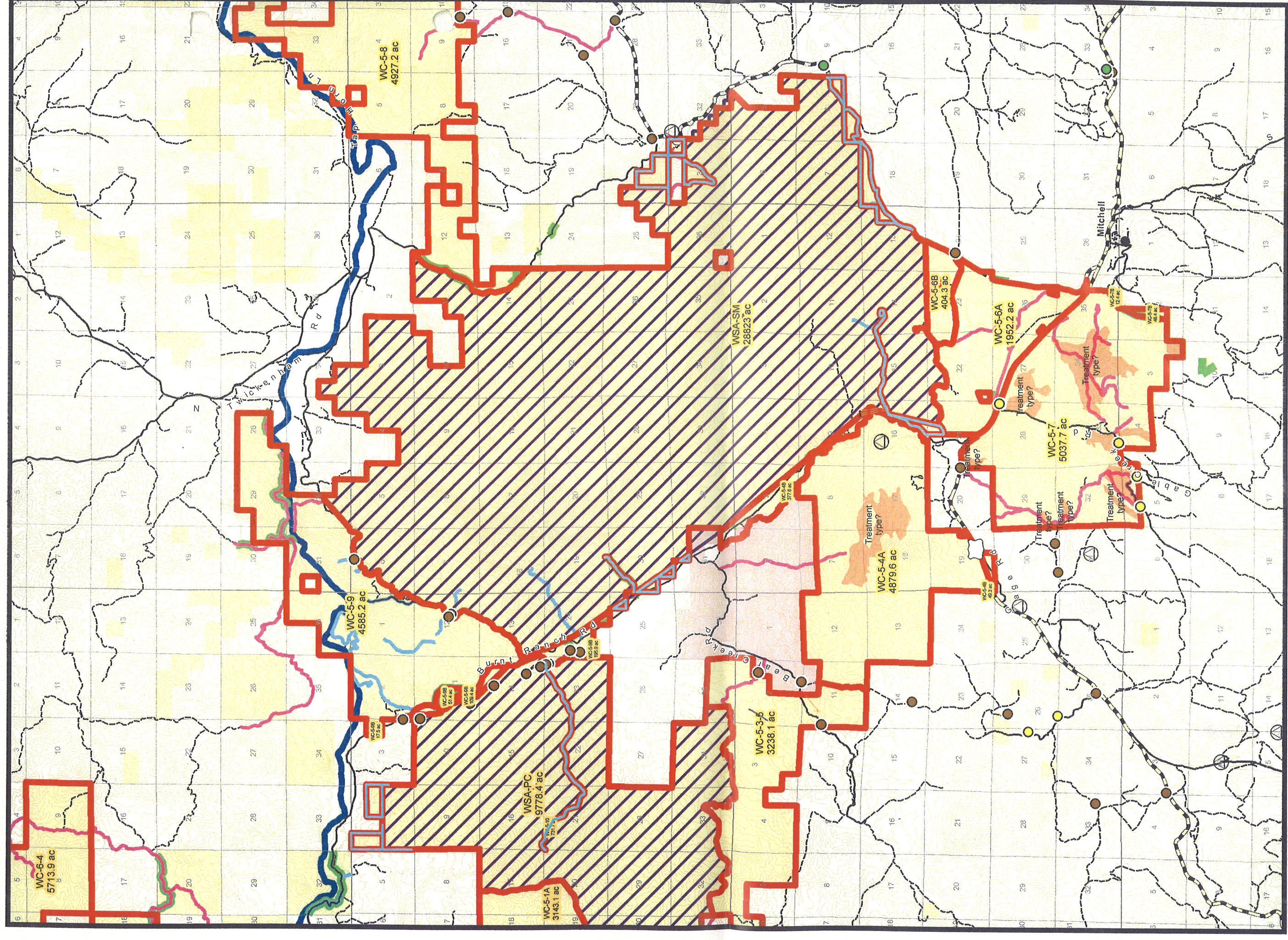
Total Rows Returned:

0



*No Mining Claims*

NO WARRANTY IS MADE BY BLM  
FOR USE OF THE DATA FOR  
PURPOSES NOT INTENDED BY BLM



**WC-5-10**  
**WILDERNESS CHARACTER INVENTORY**

0 0.8 1.6 2.4 3.2 Miles

U.S. DEPARTMENT OF THE INTERIOR  
 Bureau of Land Management  
 BRINEVILLE DISTRICT  
 5030 NE Third Street  
 Prineville, OR 97754  
 (541) 416-6700

Last Modified: 9/12/2007 1:07:59 PM  
 No warranty is made by the Bureau of Land Management as to the accuracy, reliability, or completeness of these data for individual or aggregate use with other data. Original data were compiled from various sources. This information may not meet National Map Accuracy Standards. This product was developed through digital means and may be updated without notification.

	Selected Inventory Unit		Rivers
	Inventory Unit		Corrals
	Wilderness Study Areas		Mineral Resources
	BLM		Water Points
	US Forest Service		Fences
	National Park Service		Powerlines
	State		Treatments
	Private or Unaffiliated		Arterial Road
	FS roadless areas		Collector Road
	FS Wilderness		Local Road

	Public Access - Interim Designations		US, County, State and Local Roads
	Interim Road		Interstate Highway
	Interim Trail		US Highway
	To Private		State Highway
	Admin Use Only		County Road
	Build New Road		Municipal Road
	BLM Maintained Roads		Forest Service Roads
	Easement		Arterial Road
	Right of Way		Collector Road
	Unknown Status		Local Road