

Year: 2018

Inventory Unit Number/Name: OR-015-080/ Twin Lakes

FORM 1

DOCUMENTATION OF BLM WILDERNESS INVENTORY FINDINGS ON RECORD

1. Is there existing BLM wilderness inventory information on all or part of this area?

No _____ Yes X (if more than one unit is within the area, list the names/numbers of those units):

a) **Inventory Source:** Wilderness Inventory – Final Intensive Inventory Decisions; USDI BLM - Oregon and Washington, November 1980.

b) **Inventory Unit Number(s)/Name(s):** 1-80/ Twin Lakes

c) **Map Name(s)/Number(s):** Intensive Wilderness Inventory - Final Decisions; USDI BLM - Oregon, November 1980.

d) **BLM District(s)/Field Office(s):** Lakeview District, Lakeview Resource Area.

2. BLM Inventory Findings on Record:

Existing inventory information regarding wilderness characteristics (if more than one BLM inventory unit is associated with the area, list each unit and answer each question individually for each inventory unit):

Unit#	Size (historic acres)	Natural Condition? Y/N	Outstanding Solitude? Y/N	Outstanding Primitive & Unconfined Recreation? Y/N	Supplemental Values? Y/N
1-80	17,920	N	N	N	N
1-80*	20,357	N	N/A	N/A	N/A

*The inventory of this unit was updated in 2010. However, due to a State Office-sponsored Wilderness Inventory Consistency Evaluation and subsequent guidance, the 2010 inventory analysis and findings are being replaced by this current 2018 inventory review. Documentation of the 2010 inventory can be found in the wilderness inventory project record.

Summarize any known primary reasons for prior inventory findings listed in this table:

In 1980, historic unit 1-80 was described as sage flats with low, rolling hills that provided little topographic variation across the unit. Vegetation within the unit was mainly big sagebrush and associated species. The unit contained five lakebed pits, four noticeable

“ways” on the perimeters and a 1,330-acre drilled seeding in the southeast corner. Twin Lakes Reservoir on the west side of the unit was a particularly noticeable development. This unit did not meet the naturalness criteria as it was not primarily in a natural condition with the works of man substantially unnoticeable. Opportunities for solitude were very limited because in most places a person could see completely across the unit. Under these circumstances, one would not be able to avoid the sights and sounds of others in the unit. Recreation potential was severely limited by the size and exposure of the unit. Hunting potential was moderate on the unit. The area lacked features which might provide any exceptional recreation experience. The unit offered no outstanding recreational opportunities. The unit had no known supplemental values.

FORM 2

DOCUMENTATION OF CURRENT WILDERNESS INVENTORY CONDITIONS

Unit Number/Name: OR-015-080/ Twin Lakes

(1) Is the unit of sufficient size? Yes No

Between 2007 and 2016, BLM staff conducted field inventory in the area as part of a process to update its road and wilderness inventories and to gather additional information to supplement ONDA’s wilderness information. This fieldwork included photo documentation of the boundary and interior routes and a re-evaluation of wilderness characteristics for this area. Using both ONDA and BLM photos, field logs, and staff field knowledge, the BLM completed route analysis within the area in 2017.

The BLM determined that the inventory unit is bounded by BLM road 6184-00 to the north; 6104-00 and private lands to the east; and 6124-00 to the south. Due to changes in boundary determinations and cut-outs of unnatural features (two water tanks and pipelines), approximately 5 acres were removed from the unit.

Thus, based on these boundary and road determinations, the BLM found the Twin Lakes inventory unit to exceed the minimum size criteria at approximately 20,353 acres of BLM-administered lands.

Additional background on the process the BLM followed during this evaluation is contained in the document, *Wilderness Inventory Maintenance Process for the Lakeview Resource Area, BLM* and in the *Route Analysis Forms*. Both documents can be found in the wilderness inventory file.

DESCRIPTION OF CURRENT CONDITIONS:

This unit is located approximately 10 miles northeast of Paisley, Oregon. It is approximately 7.5 miles long by 4 miles wide. Topographically, the unit consists of large sage flats with low rolling hills/rims (25-100 ft. high) and some dry lakebed depressions (15-125 ft. deep) including Brattain Waterhole 5 & 7, Labor Reservoir, Little Waterhole, and Twin Lakes.

Additionally, the unit contains portions of Sand Canyon along the extreme eastern boundary, though the majority of the features associated with the landform lay outside of the unit to the east. The majority of the unit contains high exposure and long sight lines. Overall, the unit ranges in elevation from 4,420 to 5,240 feet. Vegetation is comprised of sagebrush and grasses.

(2) Is the unit in a natural condition? Yes No N/A

In 1980, historic Unit 1-80 contained five lakebed pits, four noticeable “ways” on the perimeters and a 1,330-acre drilled seeding in the southeast corner. Twin Lakes Reservoir on the west side of the unit was a particularly noticeable development. This unit did not meet the naturalness criteria as it was not primarily in a natural condition with the works of man substantially unnoticeable.

The unit currently contains the following man-made developments/disturbances: 17,250 acres of wildfire, 15,957 acres of seeding, 48 acres of fuel breaks (mowing), 19 miles of fence, 17 waterholes, 1 well, 1 reservoir, 2 troughs, 23.5 miles of mostly rehabbing motorized routes, 0.25 miles of reclaimed routes.

Presently, almost 4 decades after the original inventory, these developments are weathered and grown over with herbaceous grasses and sagebrush. As a result, developments now fade into the background of the unit and are largely only noticeable at a close distance (1/4th mile or less) and are thus substantially unnoticeable from further distances. Furthermore, many of the disturbances are located near the perimeter of the unit and, as such, have a small area of influence. Additionally, areas that were seeded or allowed to revegetate naturally have returned to a natural, post fire, appearing condition

Based on a review of all the available information including photos, staff knowledge, and field review, the BLM concluded that the unit appears in a natural condition where the imprints of man are substantially unnoticeable.

(3) Does the unit (or the remainder of the unit if a portion has been excluded due to unnaturalness and the remainder is of sufficient size) have outstanding opportunities for solitude? Yes No N/A

In 1980, historic Unit 1-80 possessed limited opportunities for solitude as in in most places a person could see completely across the unit. Under these circumstances, one would not be able to avoid the sights and sounds of others in the unit.

The BLM acknowledges that there are limited opportunities for solitude within the Twin Lakes inventory unit. Topographically, the unit consists of large sage flats with low rolling hills/rims (25-100 ft. high) and some dry lakebed depressions (15-125 ft. deep) including Brattain Waterhole 5 & 7, Labor Reservoir, Little Waterhole, and Twin Lakes. Additionally, the unit contains portions of Sand Canyon along the extreme eastern boundary, though the majority of the features associated with the landform lay outside of the unit to the east. The majority of the unit contains high exposure and long sight lines. Overall, the unit ranges in

elevation from 4,420 to 5,240 feet. Vegetation is comprised of sagebrush and grasses. These opportunities are less than outstanding as the area's characteristic landscape lacks vegetative screening and existing topographic screening is insufficient to effectively allow those recreating in the area to avoid the sights and sounds of others.

Thus, for the reasons specified above and based on a review of all the available information including (BLM and citizen provided) photos, staff knowledge, and field review, the BLM concluded the Twin Lakes inventory unit does not possess outstanding opportunities for solitude.

(4) Does the unit (or the remainder of the unit if a portion has been excluded due to unnaturality and the remainder is of sufficient size) have outstanding opportunities for primitive and unconfined recreation? Yes _____ No X N/A _____

In 1980, historic Unit 1-80 was found to offer severely limited recreation potential due to exposure and size of the unit. Though, hunting potential was moderate on the unit, the area lacked features which might provide any exceptional recreation experiences. Overall, the unit did not offer outstanding recreational opportunities.

The BLM finds the unit offers limited opportunities for hiking, horseback riding, backpacking, camping, wildlife observation, exploration, scenery, photography, stargazing, trapping, and hunting. However, the BLM determined that the unit does not possess outstanding opportunities for primitive and unconfined recreation through either the diversity of recreational activities possible in the area or by the outstanding quality of one opportunity relative to opportunities found within the Lakeview Resource Area.

(5) Does the unit have supplemental values? Yes _____ No _____ N/A X

Supplemental values were not evaluated as the unit was determined to lack both outstanding opportunities for solitude and or primitive and unconfined recreation, and therefore does not meet the minimum wilderness criteria.

Summary of Findings and Conclusion

Unit Number/Name: OR-015-080/ Twin Lakes

Summary Results of Analysis:

- 1. Does the area meet the size requirements? Yes No
- 2. Does the area appear to be natural? Yes No
- 3. Does the area offer outstanding opportunities for solitude or a primitive and unconfined type of recreation? Yes No NA
- 4. Does the area have supplemental values? Yes No NA

Conclusion (Check One):

The area- or a portion of the area- has wilderness character:
(items 1, 2 and 3 must be checked "yes").

The area does not have wilderness character: (any of items 1, 2 and 3 are checked "no").

Prepared by (Member Names and Titles):


Chris Bishop, Outdoor Recreation Planner

11/1/2018
Date


Jami Ludwig, Assistant Field Manager

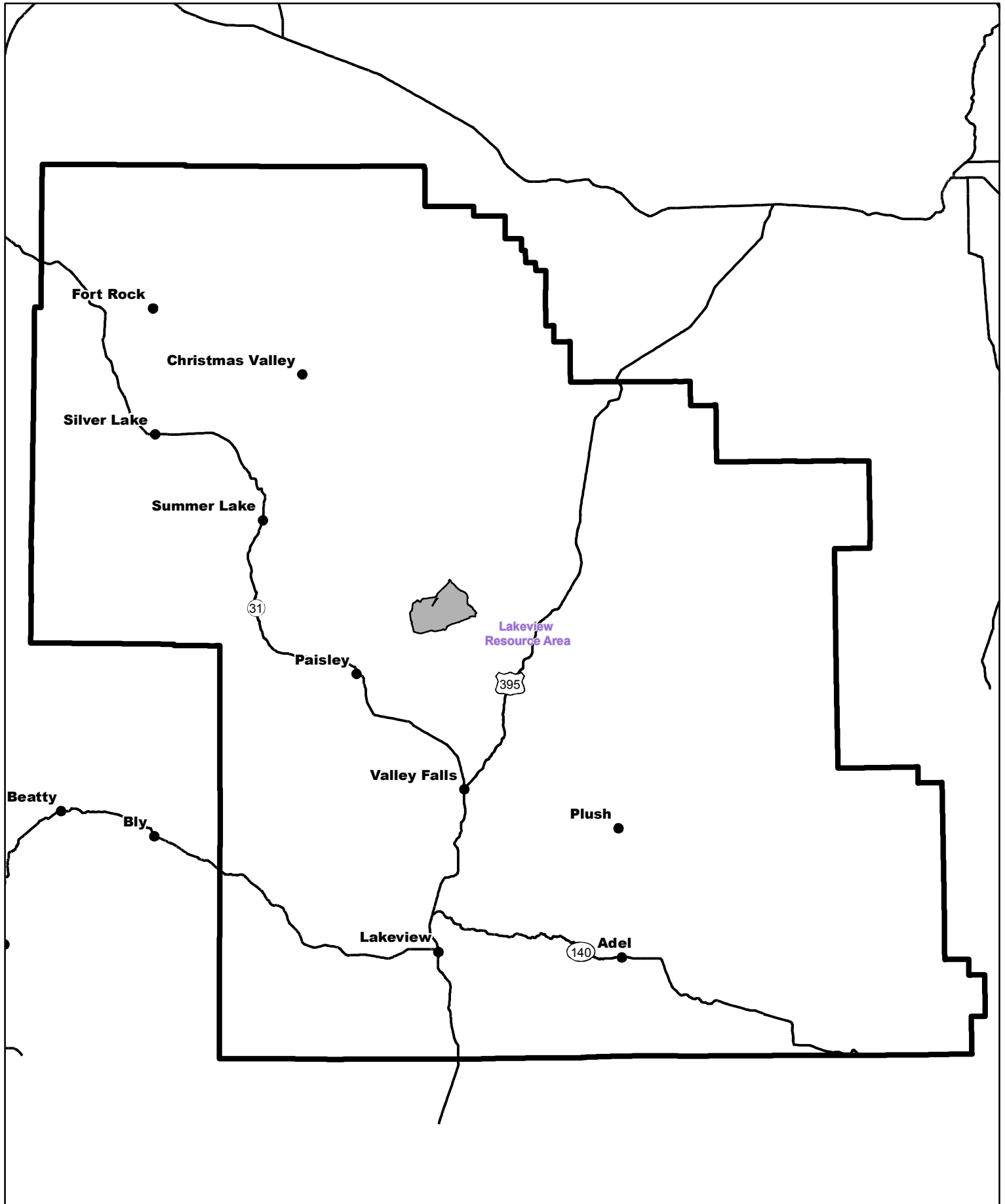
11/2/18
Date


Approved by:

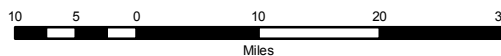

J. Todd Forbes
Field Manager


11/2/18
Date

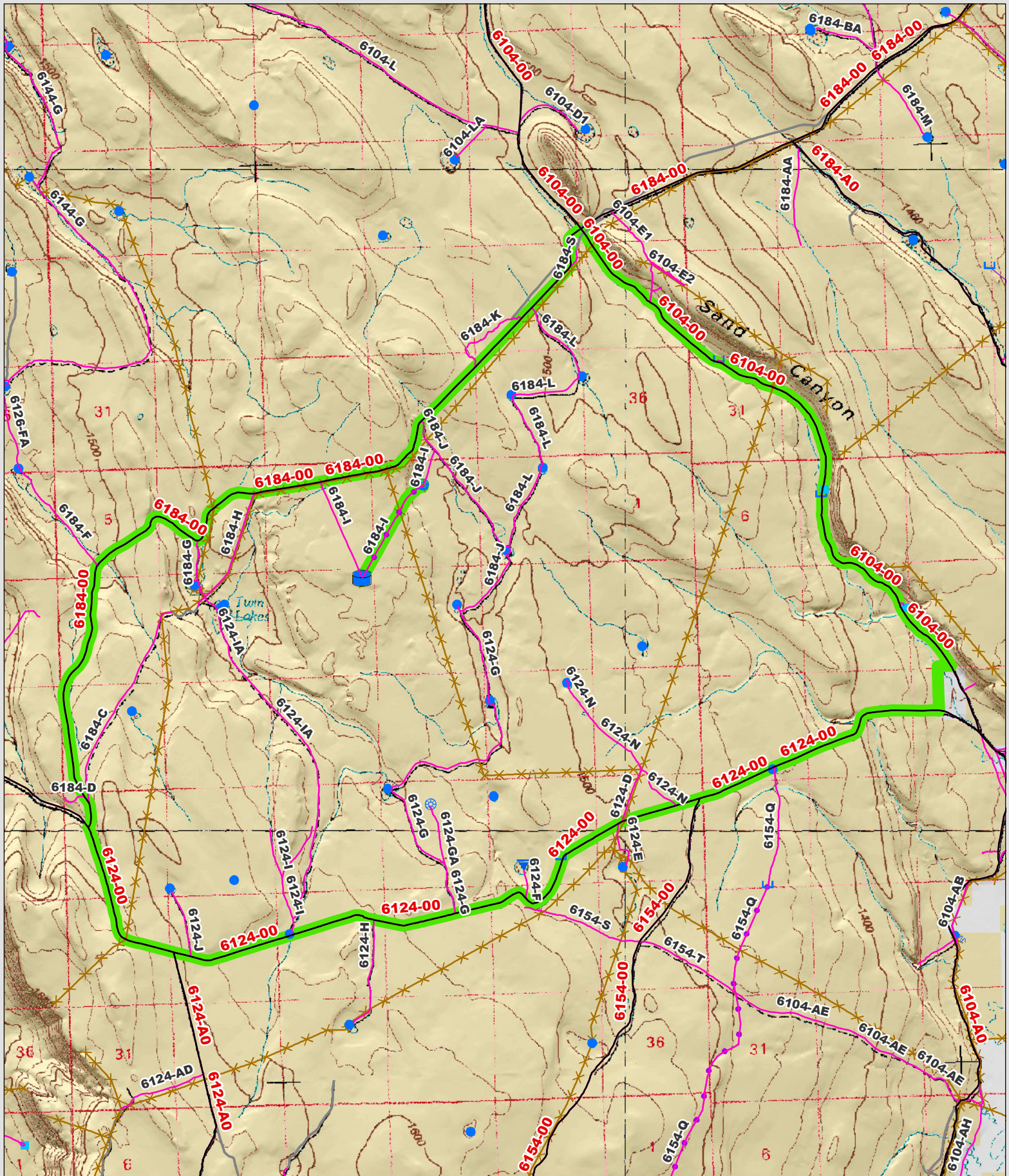
This form documents information that constitutes an inventory finding on wilderness characteristics. It does not represent a formal land use allocation or a final agency decision subject to administrative remedies under 43 CFR parts either 4 or 1610.5-2.



 Wilderness Character Inventory Unit



 No warranty is made by the Bureau of Land Management as to the accuracy, reliability, or completeness of these data for individual or aggregate use with other data. Original data were compiled from various sources. This information may not meet National Map Accuracy Standards. This product was developed through digital means and may be updated without notification.



Wilderness Character Inventory Unit

Ownership

- Bureau of Land Management
- U.S. Forest Service
- State
- Private/Unknown

Roads/Trails

- Motorized Routes
- Highways
- Reclaiming Routes
- Interim Routes

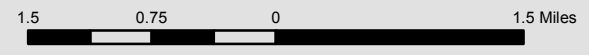
Pipelines and Ditches

- Ditch
- Water Pipeline
- Guzzler
- Fences

Water Developments

- Dam
- Reservoir
- Spring Development
- Trough
- Water Diversion

- Water Tank
- Waterhole
- Well - Water



No warranty is made by the Bureau of Land Management as to the accuracy, reliability, or completeness of these data for individual or aggregate use with other data. Original data were compiled from various sources. This information may not meet National Map Accuracy Standards. This product was developed through digital means and may be updated without notification.