

Year: 2018

Inventory Unit Number/Name: OR-015-089/ Three Story Rim*

FORM 1

**DOCUMENTATION OF BLM WILDERNESS INVENTORY
FINDINGS ON RECORD**

1. Is there existing BLM wilderness inventory information on all or part of this area?

No _____ Yes X (if more than one unit is within the area, list the names/numbers of those units):

a) **Inventory Source:** Wilderness Inventory – Final Intensive Inventory Decisions; USDI BLM - Oregon and Washington, November 1980.

b) **Inventory Unit Number(s)/ Name(s):** OR-1-89/ Bacon Camp

c) **Map Name(s)/Number(s):** Intensive Wilderness Inventory - Final Decisions; USDI BLM - Oregon, November 1980.

d) **BLM District(s)/Field Office(s):** Lakeview District, Lakeview Resource Area.

*Note: Unit name was changed to better reflect values and features found within the unit, and to reduce confusion of similarly named inventory units.

2. BLM Inventory Findings on Record:

Existing inventory information regarding wilderness characteristics (if more than one BLM inventory unit is associated with the area, list each unit and answer each question individually for each inventory unit):

Unit #	Size (historic acres)	Natural Condition? Y/N	Outstanding Solitude? Y/N	Outstanding Primitive & Unconfined Recreation? Y/N	Supplemental Values? Y/N
1-89	5,560	Y	N	N	N
1-89*	5,478	Y	N	N	N/A

*The inventory of this unit was updated in 2011. However, due to a State Office-sponsored Wilderness Inventory Consistency Evaluation and subsequent guidance, the 2011 inventory analysis and findings are being replaced by this current 2018 inventory review. Documentation of the 2011 inventory can be found in the wilderness inventory project record.

Summarize any known primary reasons for prior inventory findings listed in this table:

In 1980, the unit was described as triangular shaped, with the west side of the unit rising steeply to a flat plateau in the center of the unit. The east and south portions are broken by rims and gulleys, which descend to the bottom of Lynches Draw. Topographic relief in the unit amounts to several hundred feet of variation across the unit from west to east. Vegetation consists of big sagebrush. The unit has 3 moderate sized reservoirs in the northwest corner which have revegetated to a degree, but are still substantially noticeable. There was a 200-acre sagebrush eradication project done in the southwest side of the unit, which is substantially noticeable within the spray area. The majority of the unit, outside of these areas, was found to be in a natural condition. The unit was found to offer some topographic relief, but on the flat plateau, one would have difficulty avoiding the sights and sounds of others in the unit. The small size of the unit and its shape present a situation where portions of the unit are exposed to boundary areas, and make any degree of solitude difficult to achieve. The unit does not represent and outstanding opportunity for solitude. The unit offers limited hunting potential, which would generally be a vehicle-associated activity in this area. The small size of the unit, limited topographic challenge, and exposure within the unit present limited recreation potential. As such, the unit was found to not offer outstanding primitive or unconfined recreation potential. Supplemental values were not mentioned.

FORM 2

**DOCUMENTATION OF CURRENT WILDERNESS INVENTORY
CONDITIONS**

Unit Number/Name: OR-015-089/ Three Story Rim

(1) Is the unit of sufficient size? Yes X No _____

Between 2008 and 2016, the BLM conducted field inventory of the area to update its road and wilderness inventory and to gather additional information. This fieldwork included photo documentation of the boundary and interior routes and a re-evaluation of wilderness characteristics for this area. Using both citizen provided and BLM photos, field logs, and staff field knowledge, the BLM completed route analysis and made boundary determinations within the area in 2017.

The BLM determined that the inventory unit is bounded by BLM Roads 6155-D0 (Bacon Camp Draw Road) on the west; 6155-E0 (Lynch Gulch Road) and 6155-00 (Warner Valley Road) on the east; and 6165-00 (Corn Lake Road) on the north.

Thus, based on these boundary and road determinations, the BLM found the Three Story Rim inventory unit to exceed the minimum size criteria at approximately 5,478 acres of BLM-administered lands.

Additional background on the process that the BLM followed during this evaluation is contained in the document, *Wilderness Inventory Maintenance Process for the Lakeview*

Resource Area, BLM and in the *Route Analysis Forms*. Both documents can be found in the wilderness inventory file.

DESCRIPTION OF CURRENT CONDITIONS:

Inventory Unit OR-015-089 is located about 30 miles north of Plush, Oregon. The unit is approximately 4.5 miles long by 2.5 miles wide. The unit is dominated by Three Story Rim rising 600 feet above Warner Valley, with a massive circular eroded drainage sloping to the east. In addition, the unit has a large plateau, several tabletops, shelves, and a few unnamed buttes. The unit is flanked on west by Bacon Camp Draw and by Lynch Gulch on the east. The northern boundary of the unit burned in wildfires in 1984, 1986, 1999, and 2001. This area was allowed to revegetate naturally. Sagebrush and grasses now dominate most of the unit.

(2) Is the unit in a natural condition? Yes No N/A

In 1980, historic Unit 1-89 contained 3 moderate sized reservoirs in the northwest corner of the unit, which have revegetated to a degree but are still substantially noticeable. There was a 200-acre sagebrush eradication project done in the southwest side of the unit, which is substantially noticeable within the spray area. The majority of the unit, outside of these areas, was found to be in a natural condition.

The unit currently contains the following man-made developments/disturbances: 577 acres of wildfire, 309 acres of chemical treatments, 25 acres of mow strip (fuel break), 5.5 miles of fenceline, 2.5 miles of motorized routes, 1.5 miles of reclaiming routes, 3 reservoirs, 1 waterhole, and 1 wilderness therapy campsite.

Presently, almost 4 decades after the original inventory, these developments are weathered and grown over with herbaceous grasses and sagebrush. As a result, developments now fade into the background of the unit and are largely only noticeable at a close distance (1/4th mile or less) and are thus substantially unnoticeable from further distances. The topography of the area also plays a large role in screening disturbances and man-made developments due to plateaus, rims, tabletops, canyons, shelves, and buttes across the area. In addition, the majority of the remaining disturbances are located near the perimeter of the unit and, as such, have a small area of influence. Areas that were allowed to revegetate naturally, have been invaded by rabbit/ sagebrush and have returned to a natural, post fire, appearing condition.

Based on a review of all the available information including photos, staff knowledge, and field review, the BLM concluded that the unit appears in a natural condition where the imprints of man are substantially unnoticeable.

(3) Does the unit (or the remainder of the unit if a portion has been excluded due to unnaturalness and the remainder is of sufficient size) **have outstanding opportunities for solitude?** Yes No N/A

In 1980, the unit was found to offer some topographic relief, but on the flat plateau, one would have difficulty avoiding the sights and sounds of others in the unit.

The Three Story Rim unit is very topographically diverse and offers many more areas for solitude than just the plateau, which only makes up a small portion of the area. Overall, the unit is dominated by Three Story Rim rising 600 feet above Warner Valley, with a massive circular eroded drainage sloping to the east. In addition, the unit has a large plateau, several tabletops, shelves, and a few unnamed buttes. The unit is flanked on west by Bacon Camp Draw and by Lynch Gulch on the east.

Thus, for the reasons specified above and based on a review of all the available information including (BLM and citizen provided) photos, staff knowledge, and field review, the BLM concluded the Three Story Rim inventory unit possesses outstanding opportunities for solitude where one could avoid the sights and sounds of others in the area.

(4) Does the unit (or the remainder of the unit if a portion has been excluded due to unnaturalness and the remainder is of sufficient size) **have outstanding opportunities for primitive and unconfined recreation?** Yes No N/A

In 1980, the unit was found to offer limited hunting potential, which was believed to be a vehicle-associated activity in this area.

The BLM concluded that hunting activities listed above in combination with the diversity of camping, backpacking, horseback riding, sightseeing, trapping, photography, and wildlife viewing, and exploration are exceptional throughout the unit. The BLM noted that a 7-mile hiking opportunity above Bacon Camp Draw, along Three Story Rim, around the massive circular eroded drainage, and atop the upper plateau rim represents a unique opportunity for primitive and unconfined recreation within the unit.

(5) Does the unit have supplemental values? Yes No N/A

The BLM noted the presence of archeological values, as well as sage-grouse, mule deer, California bighorn sheep, and western burrowing owl habitat.

Summary of Findings and Conclusion

Unit Number and Name: OR-015-089/ Three Story Rim

Summary Results of Analysis:

- 1. Does the area meet the size requirements? X Yes No
- 2. Does the area appear to be natural? X Yes No
- 3. Does the area offer outstanding opportunities for solitude or a primitive and unconfined type of recreation? X Yes No NA
- 4. Does the area have supplemental values? X Yes No NA

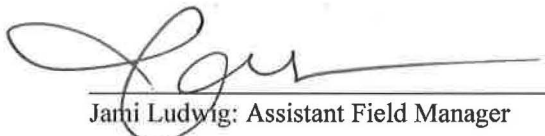
Conclusion (Check One):

- X The area- or a portion of the area- has wilderness character:
(items 1, 2 and 3 must be checked "yes").
- The area does not have wilderness character: *(any of items 1, 2 and 3 are checked "no").*

Prepared by (Member Names and Titles):



Chris Bishop: Outdoor Recreation Planner

 4/4/18
Date


Jami Ludwig: Assistant Field Manager

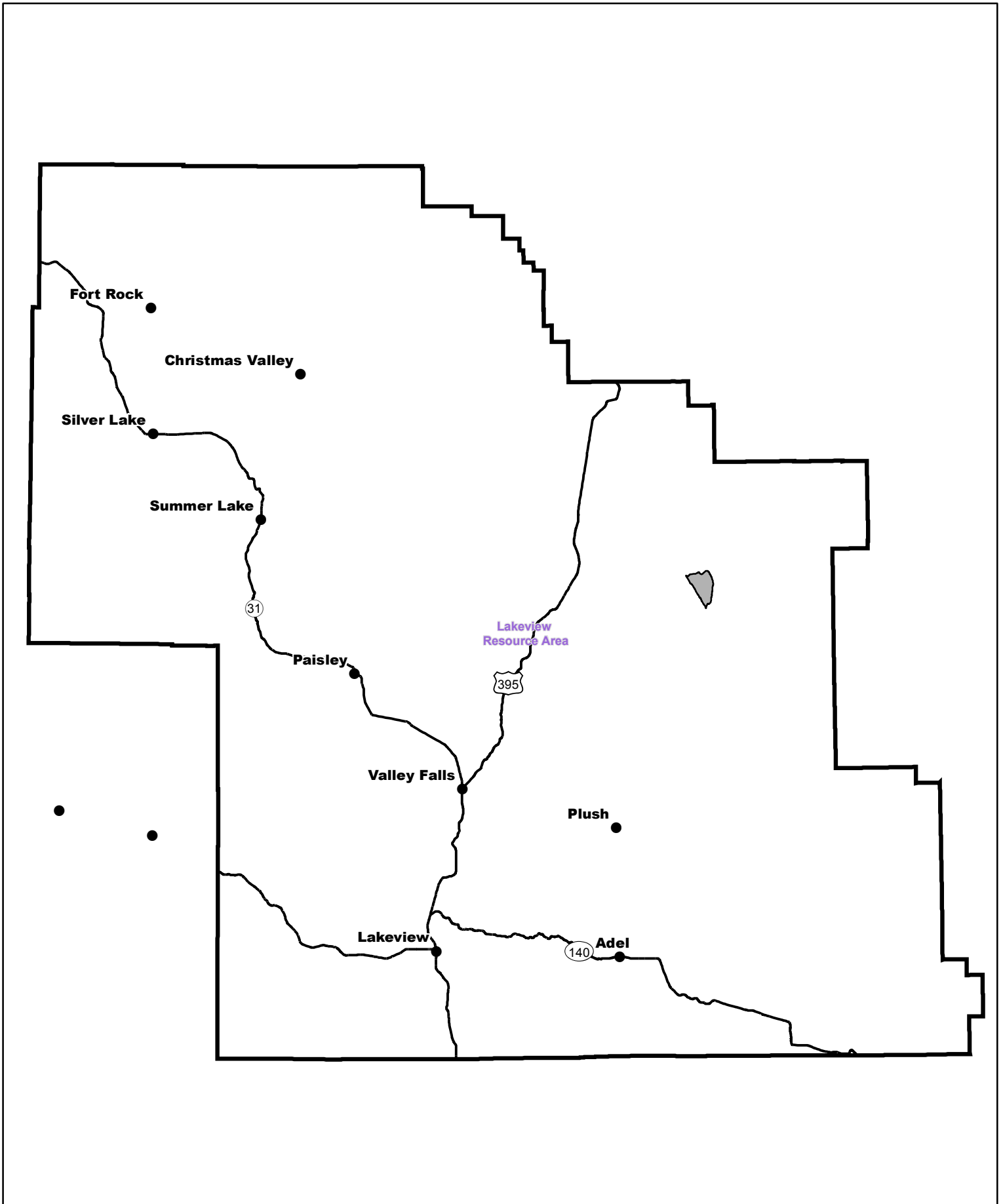
 6/4/18
Date

Approved by:

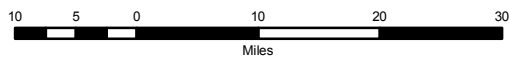

J. Todd Forbes
Field Manager

 6/4/18
Date

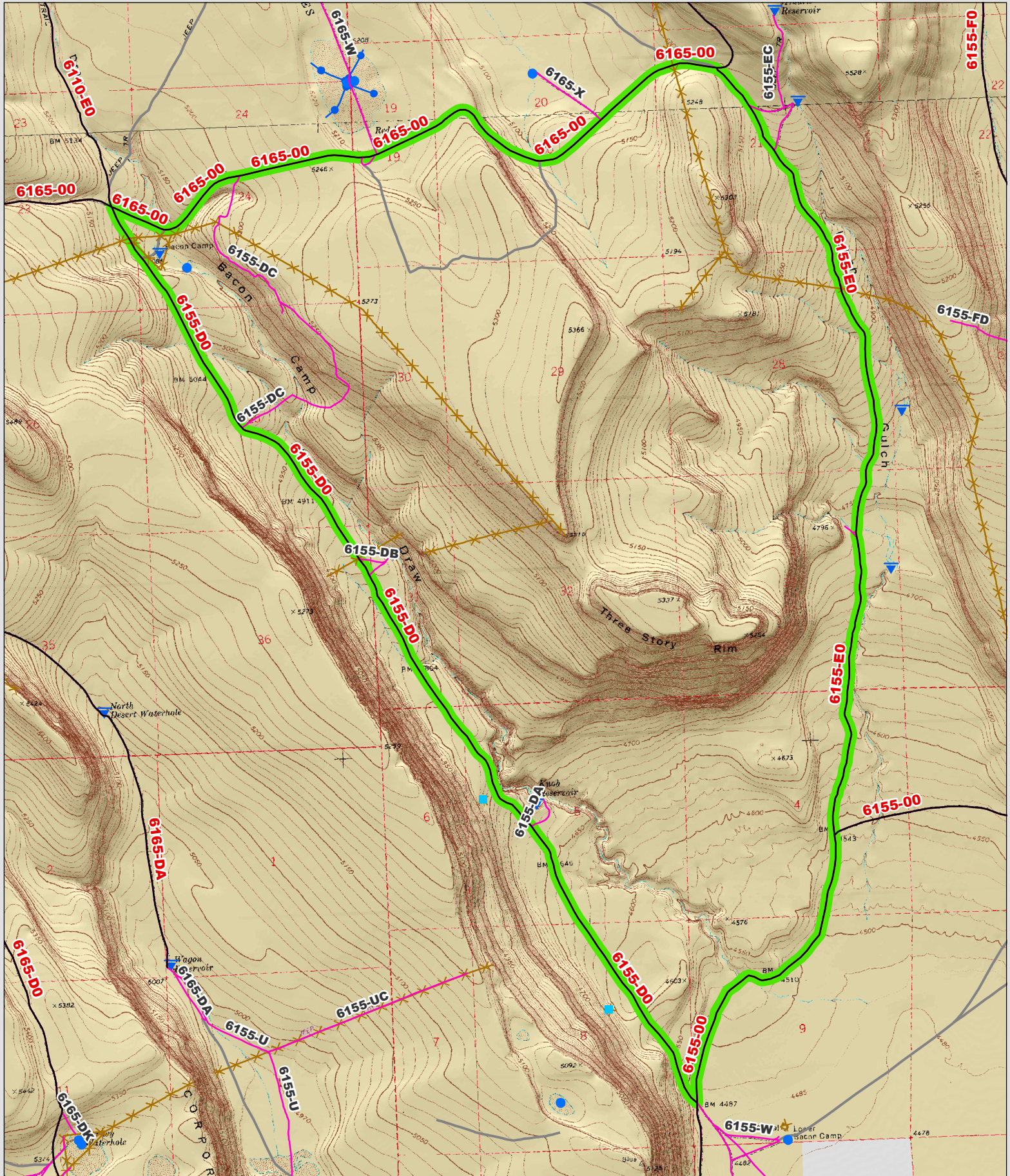
This form documents information that constitutes an inventory finding on wilderness characteristics. It does not represent a formal land use allocation or a final agency decision subject to administrative remedies under 43 CFR parts either 4 or 1610.5-2.



Wilderness Character Inventory Unit



No warranty is made by the Bureau of Land Management as to the accuracy, reliability, or completeness of these data for individual or aggregate use with other data. Original data were compiled from various sources. This information may not meet National Map Accuracy Standards. This product was developed through digital means and may be updated without notification.



Wilderness Character Inventory Unit

Ownership

- Bureau of Land Management
- U.S. Forest Service
- State
- Private/Unknown

Roads/Trails

- Motorized Routes
- Highways
- Reclaiming Routes
- Interim Routes

Pipelines and Ditches

- Ditch
- Water Pipeline
- Guzzler
- Fences

Water Developments

- Dam
- Reservoir
- Spring Development
- Trough
- Water Diversion

- Water Tank
- Waterhole
- Well - Water

0.7 0.35 0 0.7 Miles

No warranty is made by the Bureau of Land Management as to the accuracy, reliability, or completeness of these data for individual or aggregate use with other data. Original data were compiled from various sources. This information may not meet National Map Accuracy Standards. This product was developed through digital means and may be updated without notification.