

Year: 2018

Inventory Unit Number/Name: OR-015-021C/ South Green Mountain

**FORM 1**

**DOCUMENTATION OF BLM WILDERNESS INVENTORY FINDINGS ON RECORD**

**1. Is there existing BLM wilderness inventory information on all or part of this area?**

No \_\_\_\_\_ Yes  X  (if more than one unit is within the area, list the names/numbers of those units):

a) **Inventory Source:** Wilderness Inventory – Final Intensive Inventory Decisions; USDI BLM - Oregon and Washington, November 1980.

b) **Inventory Unit Number(s)/Name(s):** 1-21B/ South Green Mountain

c) **Map Name(s)/Number(s):** Intensive Wilderness Inventory - Final Decisions; USDI BLM - Oregon, November 1980.

d) **BLM District(s)/Field Office(s):** Lakeview District, Lakeview Resource Area.

**2. BLM Inventory Findings on Record:**

Existing inventory information regarding wilderness characteristics (if more than one BLM inventory unit is associated with the area, list each unit and answer each question individually for each inventory unit):

Unit#	Size (historic acres)	Natural Condition? Y/N	Outstanding Solitude? Y/N	Outstanding Primitive & Unconfined Recreation? Y/N	Supplemental Values? Y/N
1-21B	14,320	Y	N	N	N/A
1-21B*	5,474	N	N/A	N/A	N/A

\*The inventory of this unit was updated in 2011. However, due to a State Office-sponsored Wilderness Inventory Consistency Evaluation and subsequent guidance, the 2011 inventory analysis and findings are being replaced by this current 2018 inventory review. Documentation of the 2011 inventory can be found in the wilderness inventory project record.

**Summarize any known primary reasons for prior inventory findings listed in this table:**

The majority of the subunit 1-12B was a sagebrush flat located above a bench on the north edge of Christmas Valley. The land rose toward the north to rolling hills and a large rock outcrop at South Green Mountain. The subunit had scattered juniper increasing in density to

the north. The majority of the area was in a generally natural appearance with minor impacts from range fences and an intrusion “way” on the east side which went to a stock watering station. Ten acres in the south end of the subunit were leased for a dump site. A dead-end road led to the site. The northern part of the unit offered some opportunity for solitude due to juniper and topographic features which provided more screening than was present in the south. The southern portion of the unit offered very little opportunity for one to avoid the presence of others in the unit. The unit as a whole offered some degree of solitude but not any outstanding opportunity. The northern portion of the unit offered some opportunities for hiking, wildlife observation and hunting. The opportunities through the unit were not outstanding for primitive recreation because of restrictions of size, topography and interest features in the unit. Supplemental values were unknown.

**FORM 2**

**DOCUMENTATION OF CURRENT WILDERNESS INVENTORY  
CONDITIONS**

**Unit Number/Name:** OR-015-021C/ South Green Mountain

**(1) Is the unit of sufficient size?** Yes  X  No \_\_\_\_\_

Between 2007 and 2016, BLM staff conducted field inventory in the area as part of a process to update its road and wilderness inventories and to gather additional information to supplement ONDA’s wilderness information. This fieldwork included photo documentation of the boundary and interior routes and a re-evaluation of wilderness characteristics for this area. Using both ONDA and BLM photos, field logs, and staff field knowledge, the BLM completed route analysis within the area in 2017.

The BLM determined that the inventory unit is bounded by BLM road 6109-D0 to the east; BLM interim numbered roads 3120-00 and 3120-G0 to the north; 6109-I0, 3119-D0, 3119-00, a right-of way for County Road 9-21, and private lands to the west; and private lands to the south. Due to changes in boundary determinations (access to private lands and roads right-of-ways buffer corrections) and cut-outs of unnatural features (private encroachment, gravel parking lot and outhouse, well, pipeline, and troughs), approximately 9 acres were removed from the unit.

Thus, based on these boundary and road determinations, the BLM found the South Green Mountain inventory unit to exceed the minimum size criteria at approximately 5,464 acres of BLM-administered lands.

Additional background on the process the BLM followed during this evaluation is contained in the document, *Wilderness Inventory Maintenance Process for the Lakeview Resource Area, BLM* and in the *Route Analysis Forms*. Both documents can be found in the wilderness inventory file.

**DESCRIPTION OF CURRENT CONDITIONS:**

This unit is located approximately 4 miles north of Christmas Valley, Oregon. It is approximately 3.5 miles long by 2 miles wide. Topographically, the unit consists undulating terrain and a few rolling hills (20-50 ft. high). Overall, the unit ranges in elevation from 4,325 to 4,605 feet. Vegetatively, the northwest quarter of the unit is dominated by moderate to high-density stands of western juniper (approx. 1,000 acres). The central half of the unit is comprised of mostly open terrain with scattered juniper remaining after wildfires (1,000 acres) in 1995 and 2012. The southern quarter of the unit is characterized by small stands of juniper (475 acres total) as well as individual scattered trees. The remainder of the unit is covered in sagebrush, rabbit brush, and grasses.

**(2) Is the unit in a natural condition?** Yes \_\_\_\_\_ No  X  N/A \_\_\_\_\_

In 1980, historic unit 1-21B was described as being generally natural appearance with minor impacts from range fences and a “way” on the east side, which went to a stock watering station. And a dead-end road led to a ten acre leased dump site to the south.

The unit currently contains the following man-made developments/disturbances: 1,749 acres of chemical treatments, over a 1,000 acres of wildfire, 384 acre of seeding, 106 acres of harvested timber, 106 acres of prescribed burns, 4.25 miles of fence, 17.5 miles of motorized routes, 3.5 miles of cat lines, and 4 troughs.

The man-made disturbances within the unit as a whole have increased substantially since the last inventory. The decrease in size and the resulting shape of the unit coupled with an increase in developments stemming largely from fire suppression activities (cross-country travel) and subsequent use of these routes by ATV users, from the nearby town of Christmas Valley, has led to proliferation of motorized routes and trails throughout the unit. These disturbances are easily noticeable by the casual observer when moving throughout the unit. Additionally, areas that were seeded or allowed to revegetate naturally after wildfires have not returned to a natural appearing condition and are therefore are not currently contributing to screening these disturbances.

Based on a review of all the available information including photos, staff knowledge, and field review, the BLM concluded that the unit does not appear in a natural condition as the imprints of man are substantially noticeable.

**(3) Does the unit (or the remainder of the unit if a portion has been excluded due to unnaturalness and the remainder is of sufficient size) have outstanding opportunities for solitude?** Yes \_\_\_\_\_ No \_\_\_\_\_ N/A  X

Opportunities for solitude were not evaluated as the unit was determined to lack naturalness and therefore does not meet the minimum wilderness criteria.

**(4) Does the unit** (or the remainder of the unit if a portion has been excluded due to unnaturalness and the remainder is of sufficient size) **have outstanding opportunities for primitive and unconfined recreation?** Yes  No  N/A

Opportunities for primitive and unconfined recreation were not evaluated as the unit was determined to lack naturalness and therefore does not meet the minimum wilderness criteria.

**(5) Does the unit have supplemental values?** Yes  No  N/A

Supplemental values were not evaluated as the unit was determined to lack naturalness and therefore does not meet the minimum wilderness criteria.

**Summary of Findings and Conclusion**

**Unit Number/Name:** OR-015-021C/ South Green Mountain

**Summary Results of Analysis:**

- 1. Does the area meet the size requirements?       Yes     No
- 2. Does the area appear to be natural?             Yes     No
- 3. Does the area offer outstanding opportunities for solitude or a primitive and unconfined type of recreation?             Yes     No     NA
- 4. Does the area have supplemental values?       Yes     No     NA

**Conclusion (Check One):**

The area- or a portion of the area- has wilderness character:  
*(items 1, 2 and 3 must be checked "yes").*

The area does not have wilderness character: *(any of items 1, 2 and 3 are checked "no").*

**Prepared by (Member Names and Titles):**

  
Chris Bishop: Outdoor Recreation Planner

11/1/2018  
Date

  
Jami Ludwig: Assistant Field Manager

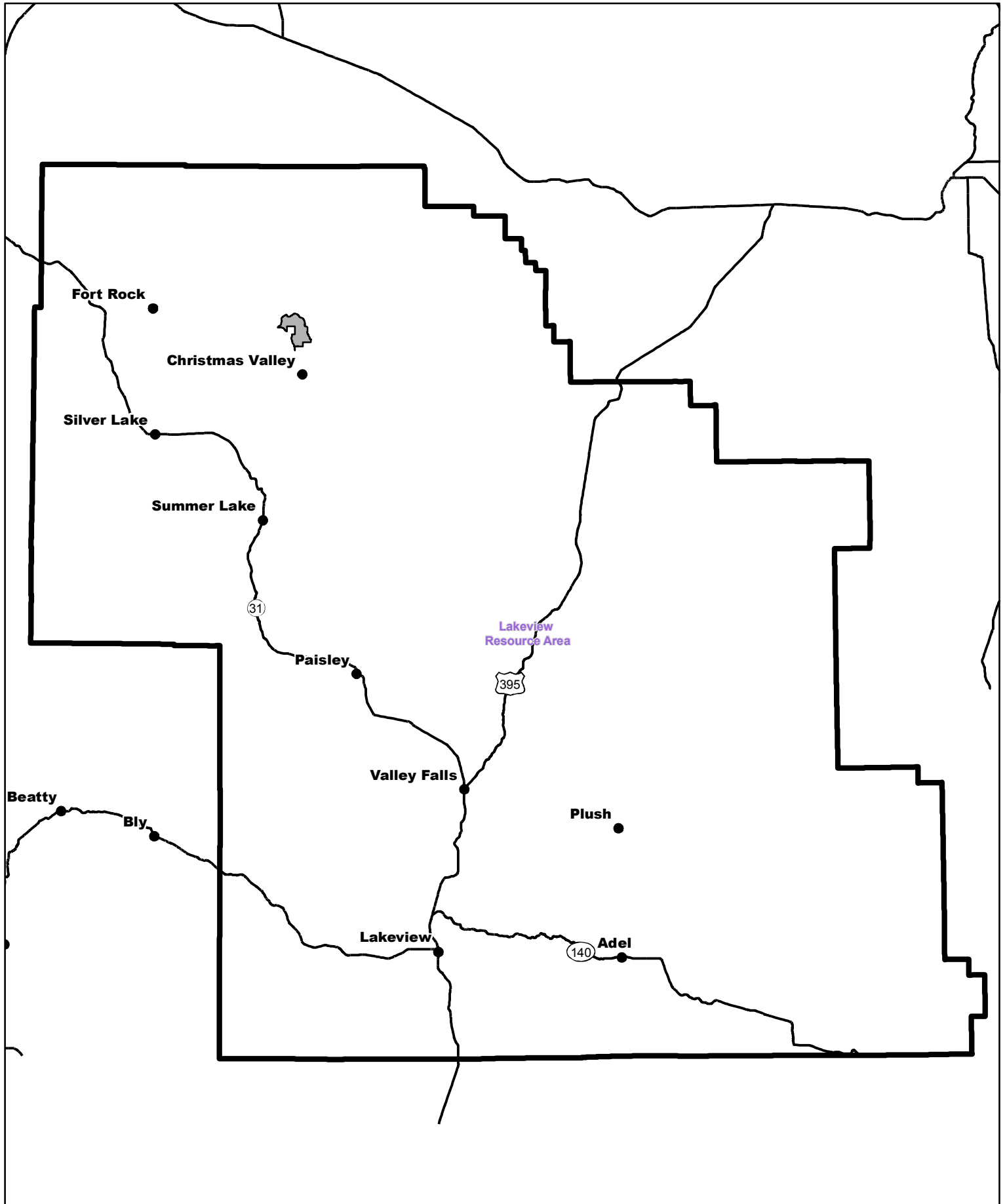
11/2/18  
Date


**Approved by:**

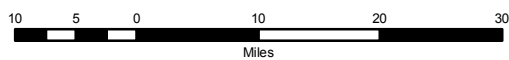
  
J Todd Forbes  
Field Manager


11/2/18  
Date

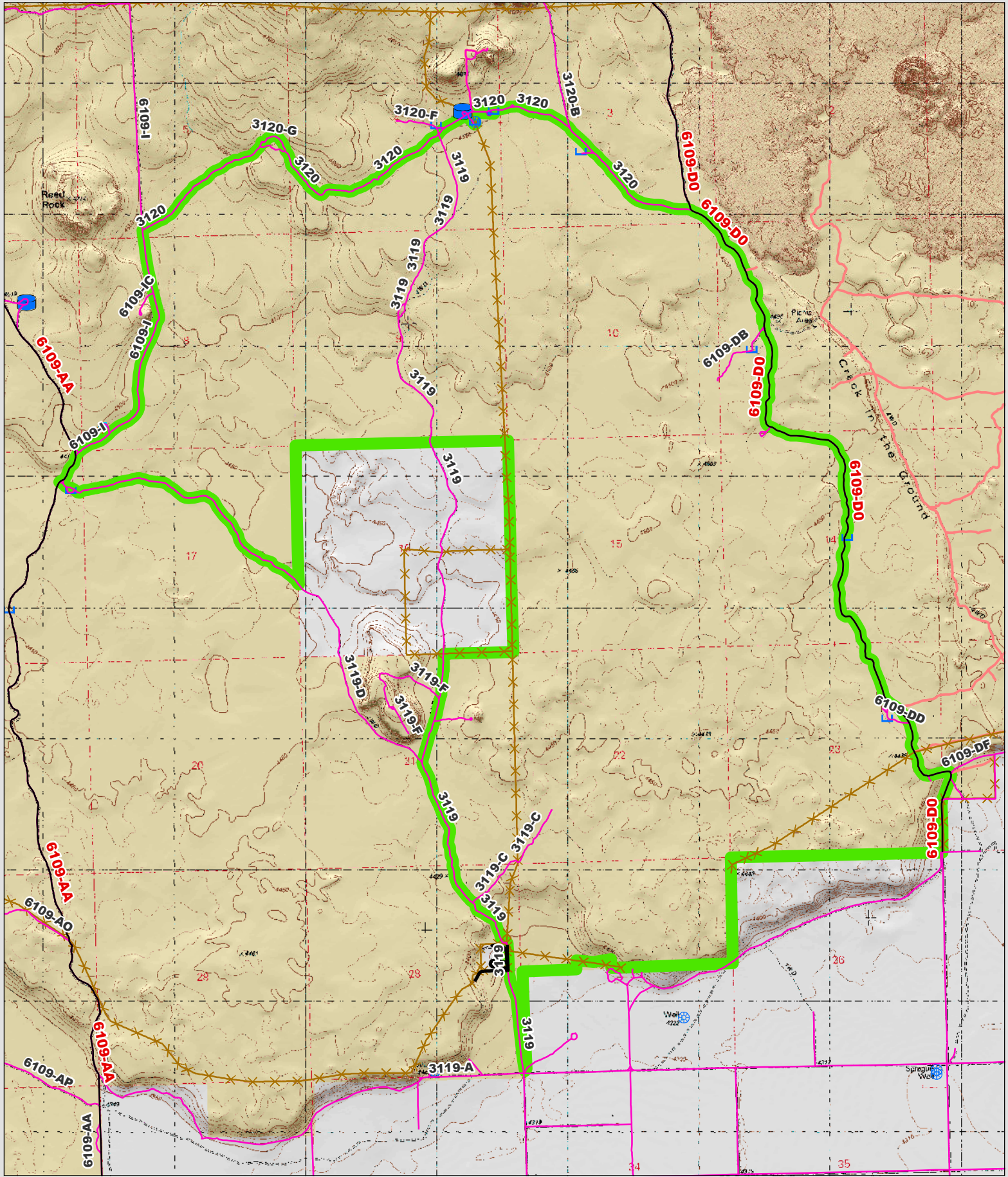
*This form documents information that constitutes an inventory finding on wilderness characteristics. It does not represent a formal land use allocation or a final agency decision subject to administrative remedies under 43 CFR parts either 4 or 1610.5-2.*



 Wilderness Character Inventory Unit



 No warranty is made by the Bureau of Land Management as to the accuracy, reliability, or completeness of these data for individual or aggregate use with other data. Original data were compiled from various sources. This information may not meet National Map Accuracy Standards. This product was developed through digital means and may be updated without notification.



**Wilderness Character Inventory Unit**

**Ownership**

- Bureau of Land Management
- U.S. Forest Service
- Private/Unknown

**Roads/Trails**

- Motorized Routes
- Highways
- Reclaiming Routes
- Interim Routes

**Pipelines and Ditches**

- Ditch
- Water Pipeline
- Guzzler
- Fences

**Water Developments**

- Dam
- Reservoir
- Spring Development
- Trough
- Water Diversion

- Water Tank
- Waterhole
- Well - Water

0.7    0.35    0    0.7 Miles

W    N    E    S

No warranty is made by the Bureau of Land Management as to the accuracy, reliability, or completeness of these data for individual or aggregate use with other data. Original data were compiled from various sources. This information may not meet National Map Accuracy Standards. This product was developed through digital means and may be updated without notification.