

Year: 2018

Inventory Unit Number/Name: OR-015-105/ Skokum Lake

**FORM 1**

**DOCUMENTATION OF BLM WILDERNESS INVENTORY FINDINGS ON RECORD**

**1. Is there existing BLM wilderness inventory information on all or part of this area?**

No \_\_\_\_\_ Yes  X  (if more than one unit is within the area, list the names/numbers of those units):

a) **Inventory Source:** Wilderness Review – Intensive Inventory: Final Decisions On 30 Selected Units in Southeast Oregon and Proposed Decisions On Other Intensively Inventoried Units; USDI BLM - Oregon and Washington, March 1980.

b) **Inventory Unit Number(s)/Name(s):** 1-105/ Skokum Lake

c) **Map Name(s)/Number(s):** Intensive Wilderness Inventory: Final Decisions For 30 Selected Inventory Units and Proposed Decisions For Other Intensive Inventory Units; USDI BLM - Oregon, March 1980.

d) **BLM District(s)/Field Office(s):** Lakeview District, Lakeview Resource Area.

**2. BLM Inventory Findings on Record:**

Existing inventory information regarding wilderness characteristics (if more than one BLM inventory unit is associated with the area, list each unit and answer each question individually for each inventory unit):

<b>Unit#</b>	<b>Size (historic acres)</b>	<b>Natural Condition? Y/N</b>	<b>Outstanding Solitude? Y/N</b>	<b>Outstanding Primitive &amp; Unconfined Recreation? Y/N</b>	<b>Supplemental Values? Y/N</b>
1-105	30,000	N	N	N	N/A
1-105*	17,357	N	N/A	N/A	N/A

\*The inventory of this unit was updated in 2012. However, due to a State Office-sponsored Wilderness Inventory Consistency Evaluation and subsequent guidance, the 2012 inventory analysis and findings are being replaced by this current 2018 inventory review. Documentation of the 2012 inventory can be found in the wilderness inventory project record.

*Summarize any known primary reasons for prior inventory findings listed in this table:*

In 1980, unit 1-105 (Skokum Lake) was described as flat tableland ending on the northeast at Commodore Ridge with a narrow strip of land dropping 80-200 feet in elevation between the ridge and the Hogback Road. There was a gradual rise in elevation throughout the unit from Commodore Ridge to the southern boundary. Rabbit Creek crossed the unit from south to north and approximately one-fourth mile from the northern boundary where it merged with Foley Creek. This combined drainage at the northern boundary was approximately one-fourth mile wide. Mary Ann Draw was a minor draw which crosses the southeast corner of the unit. The area did not meet the naturalness criteria due to extensive works of man including: 23 miles of "ways," eight water developments, six miles of fenceline, and 605 acres of drill seeding that did not appear natural. This unit did not offer outstanding opportunities for solitude. The low sagebrush cover on the unit and lack of significant topographic relief throughout the unit precluded any opportunity for one to avoid the presence of others in the unit. This unit offered hunting opportunities. However, primitive recreation potential for backpacking or other non-motorized recreation activities were limited.

**FORM 2**

**DOCUMENTATION OF CURRENT WILDERNESS INVENTORY  
CONDITIONS**

**Unit Number/Name:** OR-015-105/ Skokum Lake

**(1) Is the unit of sufficient size?** Yes  No

Between 2007 and 2016, BLM staff conducted field inventory in the area as part of a process to update its road and wilderness inventories and to gather additional information to supplement ONDA's wilderness information. This fieldwork included photo documentation of the boundary and interior routes and a re-evaluation of wilderness characteristics for this area. Using both ONDA and BLM photos, field logs, and staff field knowledge, the BLM completed route analysis within the area in 2017.

The BLM determined that the inventory unit is bounded by BLM roads 6125-00, 6125-B0, 6125-BA, and BLM interim numbered roads 6125-Q0 and 6125-BF to the north; a right-of-way for County Road 3-10, BLM interim numbered road 0185-00, and state lands to the east; 6105-00 to the south; a right-of-way for a Bonneville Power Administration power line and private lands to the west. Due to changes in boundary determinations (roads and right-of-ways), approximately 677 acres were added to this unit.

Thus, based on these boundary and road determinations, the BLM found the Skokum Lake inventory unit to exceed the minimum size criteria at approximately 18,035 acres of BLM-administered lands.

Additional background on the process the BLM followed during this evaluation is contained in the document, *Wilderness Inventory Maintenance Process for the Lakeview Resource*

Area, BLM and in the *Route Analysis Forms*. Both documents can be found in the wilderness inventory file.

**DESCRIPTION OF CURRENT CONDITIONS:**

This unit is located approximately 15 miles northwest of Plush, Oregon. It is approximately 8.75 miles long by 5 miles wide. Topographically, the unit is dominated by and extremely flat plateau, with the only relief stemming from three dry lakebed depressions (Skokum, Feather Bed, and Foley Lakes) 15 to 50 feet deep in the north, Rabbit Creek (4.75 miles long, 15-160 ft. deep), Foley Creek (2 miles long, 10-65 ft. deep) , and Windy Hollow Draw (2 miles long, 15-40 ft. deep) to the south, and a short 2 mile long (50-400 ft. high) rim to the northeast. Overall, the unit ranges in elevation from 4,620 to 5,450 feet. Vegetatively, the unit is composed of sagebrush, grasses, and a few scattered juniper.

**(2) Is the unit in a natural condition?** Yes  No  N/A

In 1980, historic Unit 1-105 failed to meet the naturalness criteria due to the presence of 23 miles of “ways,” eight water developments, six miles of fence line, and 605 acres of drill seeding that did not appear natural.

The unit currently contains the following man-made developments/disturbances: 4,565 acres of wildfire, 1,576 acres of seeding, 640 acres of chemical treatments, 120 acres of disking, 13 miles of fence, 15 miles of motorized routes, 3.5 miles of reclaiming routes, 0.25 miles of closed routes, 1 mile of rehabbed cat line, and less than 1 acre of rehabbed mineral pit/ mineral disturbance/ abandoned mine.

Presently, almost 4 decades after the original inventory, these developments are weathered and grown over with herbaceous grasses and sagebrush. As a result, developments now fade into the background of the unit and are largely only noticeable at a close distance (1/4<sup>th</sup> mile or less) and are thus substantially unnoticeable from further distances. Furthermore, many of the disturbances are located near the perimeter of the unit and, as such, have a small area of influence. Areas that were seeded or allowed to revegetate naturally, have been invaded by rabbit bush, sagebrush, and grasses and have returned to a natural, post fire, appearing condition.

Based on a review of all the available information including photos, staff knowledge, and field review, the BLM concluded that the unit appears in a natural condition where the imprints of man are substantially unnoticeable.

**(3) Does the unit** (or the remainder of the unit if a portion has been excluded due to unnaturalness and the remainder is of sufficient size) **have outstanding opportunities for solitude?** Yes  No  N/A

In 1980, historic Unit 1-105 was found to lack outstanding opportunities for solitude. The low sagebrush cover on the unit and lack of significant topographic relief throughout the unit precluded any opportunity for one to avoid the presence of others in the unit.

The BLM acknowledges that there are limited opportunities for solitude within the Skokum Lake inventory unit. Topographically, the unit is dominated by an extremely flat plateau, with the only relief stemming from three dry lakebed depressions (Skokum, Feather Bed, and Foley Lakes) 15 to 50 feet deep in the north, Rabbit Creek (4.75 miles long, 15-160 ft. deep), Foley Creek (2 miles long, 10-65 ft. deep), and Windy Hollow Draw (2 miles long, 15-40 ft. deep) to the south, and a short 2 mile long (50-400 ft. high) rim to the northeast. Overall, the unit ranges in elevation from 4,620 to 5,450 feet. Vegetatively, the unit is composed of sagebrush, grasses, and a few scattered juniper. These opportunities are less than outstanding as the area's characteristic landscape almost completely lacks vegetative screening and existing topographic screening is insufficient to effectively allow those recreating in the area to avoid the sights and sounds of others.

Thus, for the reasons specified above and based on a review of all the available information including (BLM and citizen provided) photos, staff knowledge, and field review, the BLM concluded the Skokum Lake inventory unit does not possess outstanding opportunities for solitude.

**(4) Does the unit (or the remainder of the unit if a portion has been excluded due to unnaturalness and the remainder is of sufficient size) have outstanding opportunities for primitive and unconfined recreation?** Yes \_\_\_\_\_ No  X  N/A \_\_\_\_\_

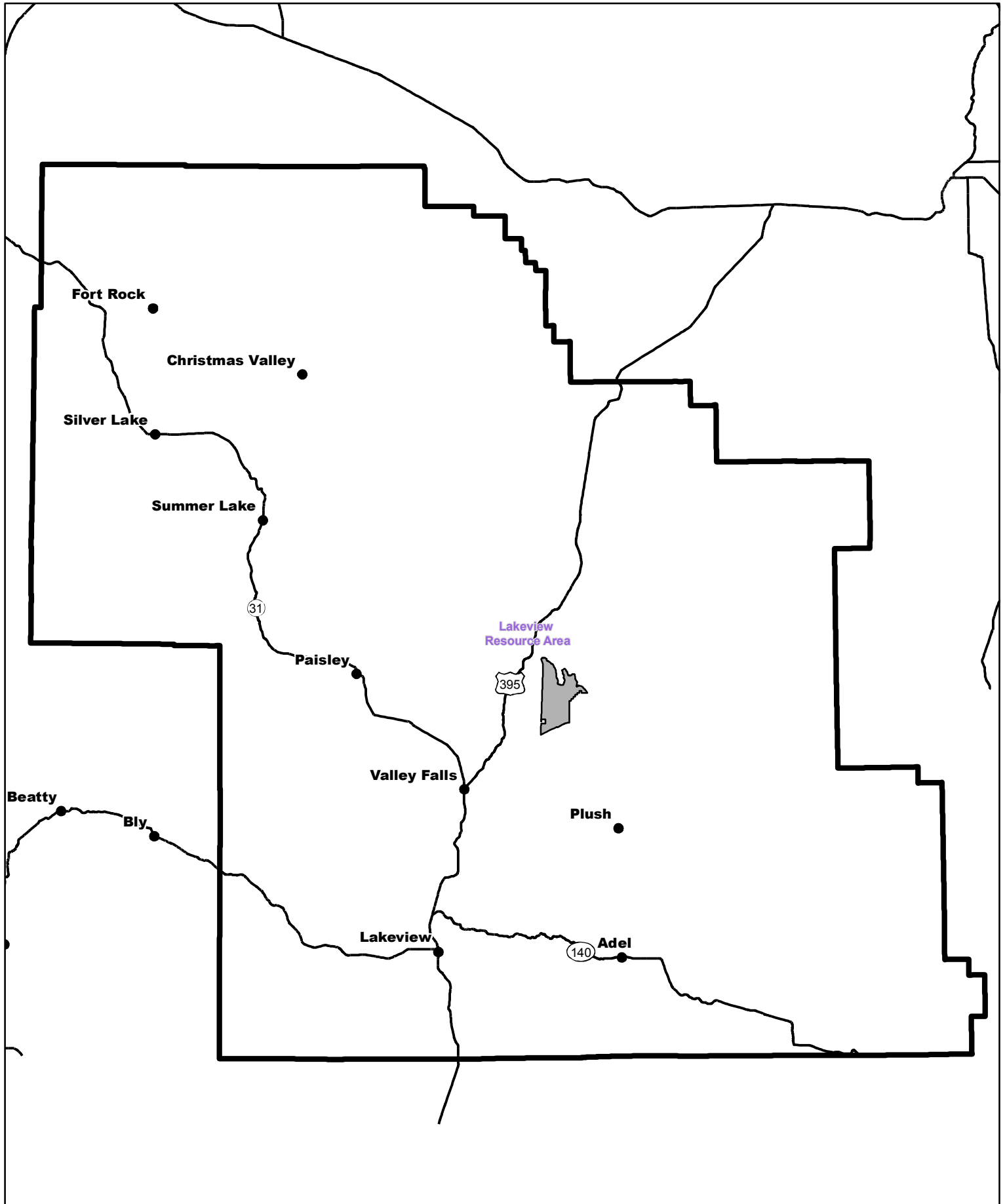
In 1980, historic Unit 1-105 offered hunting opportunities. However, primitive recreation potential for backpacking or other non-motorized recreation activities were limited.


The BLM finds the unit offers limited opportunities for hiking, horseback riding, backpacking, camping, wildlife observation, exploration, scenery, photography, stargazing, trapping, and hunting. However, the BLM determined that the unit does not possess outstanding opportunities for primitive and unconfined recreation through either the diversity of recreational activities possible in the area or by the outstanding quality of one opportunity relative to opportunities found within the Lakeview Resource Area.

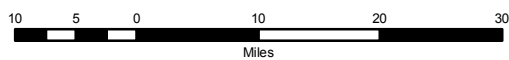
**(5) Does the unit have supplemental values?** Yes \_\_\_\_\_ No \_\_\_\_\_ N/A  X


Supplemental values were not evaluated as the unit was determined to lack both outstanding opportunities for solitude and or primitive and unconfined recreation, and therefore does not meet the minimum wilderness criteria.

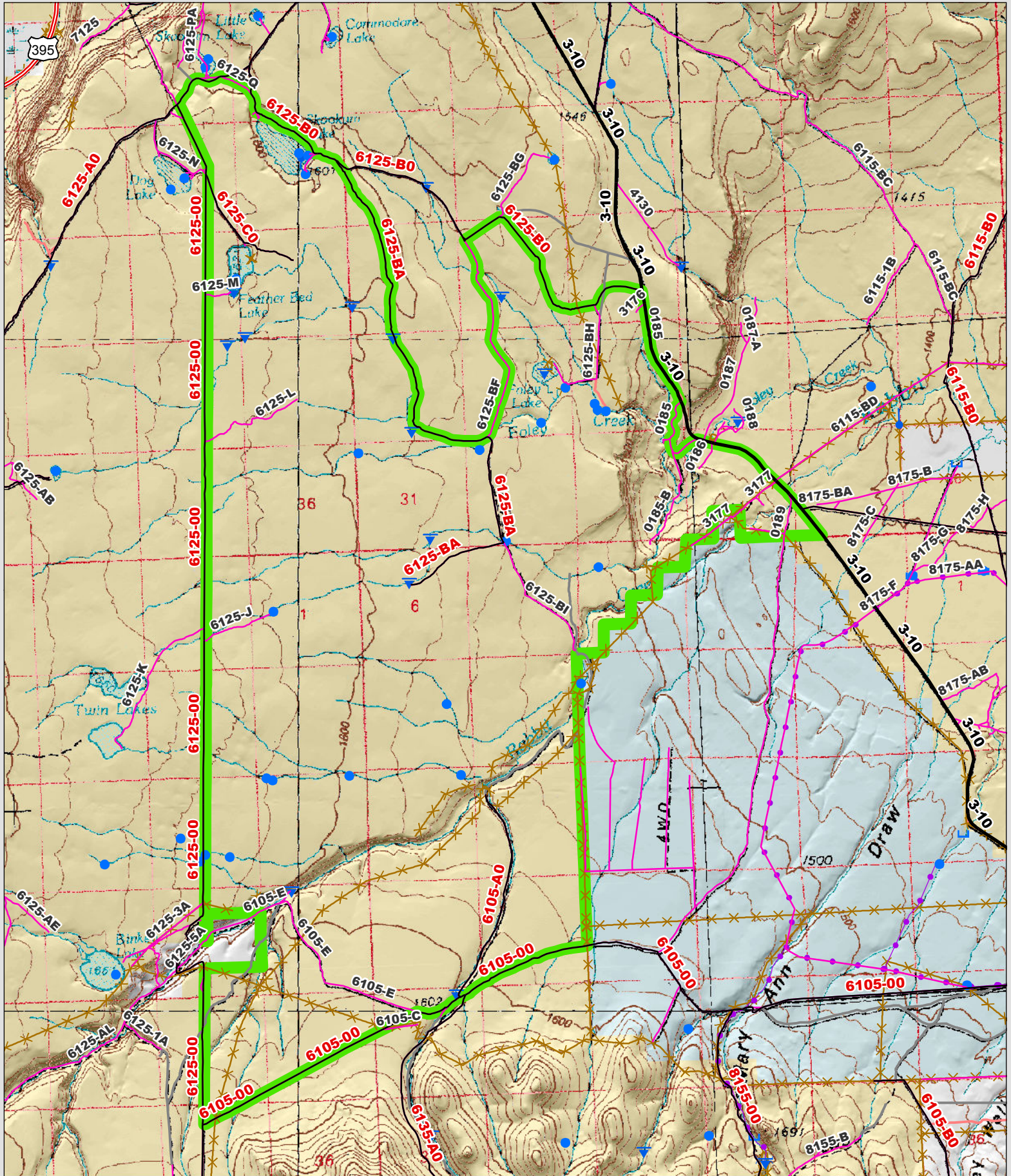


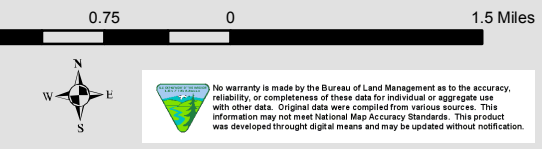


 Wilderness Character Inventory Unit



 No warranty is made by the Bureau of Land Management as to the accuracy, reliability, or completeness of these data for individual or aggregate use with other data. Original data were compiled from various sources. This information may not meet National Map Accuracy Standards. This product was developed through digital means and may be updated without notification.



<p><b>Ownership</b></p> <ul style="list-style-type: none"> <li><span style="display: inline-block; width: 15px; height: 10px; background-color: yellow; border: 1px solid black; margin-right: 5px;"></span> Bureau of Land Management</li> <li><span style="display: inline-block; width: 15px; height: 10px; background-color: lightgreen; border: 1px solid black; margin-right: 5px;"></span> U.S. Forest Service</li> <li><span style="display: inline-block; width: 15px; height: 10px; background-color: white; border: 1px solid black; margin-right: 5px;"></span> Private/Unknown</li> </ul>	<p><b>Roads/Trails</b></p> <ul style="list-style-type: none"> <li><span style="display: inline-block; width: 15px; border-bottom: 2px solid black; margin-right: 5px;"></span> Motorized Routes</li> <li><span style="display: inline-block; width: 15px; border-bottom: 2px solid red; margin-right: 5px;"></span> Highways</li> <li><span style="display: inline-block; width: 15px; border-bottom: 2px solid grey; margin-right: 5px;"></span> Reclaiming Routes</li> <li><span style="display: inline-block; width: 15px; border-bottom: 2px dashed pink; margin-right: 5px;"></span> Interim Routes</li> </ul>	<p><b>Pipelines and Ditches</b></p> <ul style="list-style-type: none"> <li><span style="display: inline-block; width: 15px; height: 10px; background-color: blue; border-radius: 5px; margin-right: 5px;"></span> Ditch</li> <li><span style="display: inline-block; width: 15px; border-bottom: 2px solid purple; margin-right: 5px;"></span> Water Pipeline</li> <li><span style="display: inline-block; width: 15px; height: 10px; background-color: lightblue; border: 1px solid blue; margin-right: 5px;"></span> Guzzler</li> <li><span style="display: inline-block; width: 15px; border-bottom: 2px dashed orange; margin-right: 5px;"></span> Fences</li> </ul>	<p><b>Water Developments</b></p> <ul style="list-style-type: none"> <li><span style="display: inline-block; width: 15px; height: 10px; background-color: lightblue; border: 1px solid blue; margin-right: 5px;"></span> Dam</li> <li><span style="display: inline-block; width: 15px; height: 10px; background-color: lightblue; border: 1px solid blue; margin-right: 5px;"></span> Reservoir</li> <li><span style="display: inline-block; width: 15px; height: 10px; background-color: lightblue; border: 1px solid blue; margin-right: 5px;"></span> Spring Development</li> <li><span style="display: inline-block; width: 15px; height: 10px; background-color: lightblue; border: 1px solid blue; margin-right: 5px;"></span> Trough</li> <li><span style="display: inline-block; width: 15px; border-bottom: 2px solid blue; margin-right: 5px;"></span> Water Diversion</li> </ul>	<p><b>Water Features</b></p> <ul style="list-style-type: none"> <li><span style="display: inline-block; width: 15px; height: 10px; background-color: blue; border-radius: 5px; margin-right: 5px;"></span> Water Tank</li> <li><span style="display: inline-block; width: 15px; height: 10px; background-color: blue; border-radius: 5px; margin-right: 5px;"></span> Waterhole</li> <li><span style="display: inline-block; width: 15px; height: 10px; background-color: blue; border-radius: 5px; margin-right: 5px;"></span> Well - Water</li> </ul>	<p>1.5      0.75      0      1.5 Miles</p>  <p>No warranty is made by the Bureau of Land Management as to the accuracy, reliability, or completeness of these data for individual or aggregate use with other data. Original data were compiled from various sources. This information may not meet National Map Accuracy Standards. This product was developed through digital means and may be updated without notification.</p>
--	---	--	--	---	---