

Year: 2018

Inventory Unit Number/Name: OR-015-114A,B,C,D,E/ Poker Jim
Contiguous Units

FORM 1

**DOCUMENTATION OF BLM WILDERNESS INVENTORY
FINDINGS ON RECORD**

1. Is there existing BLM wilderness inventory information on all or part of this area?

No _____ Yes X (if more than one unit is within the area, list the names/numbers of those units):

a) Inventory Source:

- a. Hart Mountain National Antelope Refuge Comprehensive Management Plan (U.S. Fish and Wildlife Service 1994).
- b. Draft Environmental Statement. Proposed Hart Mountain Wilderness Area, Oregon (U.S. Fish and Wildlife Service, undated).
- c. Poker Jim Ridge Wilderness Study Area, Hart Mountain National Antelope Refuge, Lake County, Oregon, Wilderness Study Report(U.S. Fish and Wildlife Service, undated).

b) Inventory Unit Number(s)/ Name(s): Poker Jim Ridge WSA

c) Map Name(s)/Number(s): Map 2-14 (U.S. Fish and Wildlife Service 1994)

d) BLM District(s)/Field Office(s): U.S. Fish and Wildlife Service/Hart Mountain National Antelope Refuge; Lakeview District, Lakeview Resource Area.

2. BLM Inventory Findings on Record:

Existing inventory information regarding wilderness characteristics (if more than one BLM inventory unit is associated with the area, list each unit and answer each question individually for each inventory unit):

Unit #	Size (historic acres)	Natural Condition? Y/N	Outstanding Solitude? Y/N	Outstanding Primitive & Unconfined Recreation? Y/N	Supplemental Values? Y/N
Poker Jim Ridge WSA	20,390	Y	Not Addressed	N	Y
Poker Jim Units <5,000 Acres*	23 - 168	Y	Y	N	Y

* The inventory of this unit was updated in 2012. However, due to a State Office-sponsored Wilderness Inventory Consistency Evaluation and subsequent guidance, the 2012 inventory analysis and findings are being replaced by this current 2018 inventory review. Documentation of the 2012 inventory can be found in the wilderness inventory project record.

Summarize any known primary reasons for prior inventory findings listed in this table:

In the late 1960's, the USFWS evaluated the Poker Jim Ridge area for wilderness character. Their inventory process was not well documented, nor did they evaluate wilderness criteria in the same fashion as the BLM. However, they described the west side of the area as a ridge forming a near vertical escarpment rising 2,500 feet from the floor of Warner Valley to an elevation of about 7,000 feet. The east side formed a long, gentle slope extending towards Catlow Valley. The west-facing scarp has very little vegetation. The top and upper part of the east slope was predominantly low sagebrush and associated grasses and forbs. Further down the east slope was an open juniper woodland. The area was found to be generally in a natural condition with few human impacts visible.

Wildlife habitat included mule deer, antelope, sage-grouse, horned larks, robins, chukar partridges, coyotes, bobcats, cottontail rabbits, white-tailed jackrabbits, marmots, ground squirrels, other small rodents, and porcupines. Primitive recreational opportunities were described as limited principally to hunting. Solitude opportunities were not directly addressed. The geology and ecology of the area was noted to be of scientific interest (USFWS, undated; p. 8-13).

FORM 2

**DOCUMENTATION OF CURRENT WILDERNESS INVENTORY
CONDITIONS**

Unit Number/Name: OR-015-114A,B,C,D,E/ Poker Jim Contiguous Units

(1) Is the unit of sufficient size? Yes _____ No X

In 2005, the BLM received a citizen proposal from the Oregon Natural Desert Association (ONDA) for the 235,445-acre Poker Jim Ridge Proposed Wilderness Study Area (WSA) Addition. ONDA included in their information a narrative report, maps, photos, photo and route logs, and GIS data with their route and photo point data. All of these materials were considered during the BLM's wilderness inventory process for this area. They identified this large area as having no interior routes which met the BLM wilderness inventory definition of a road (see Map, p. 169 of ONDA 2005).

Between 2008 and 2016, BLM staff conducted field inventory in the area as part of a process to update its road and wilderness inventories and to gather additional information to supplement ONDA's wilderness information. This fieldwork included photo documentation of the boundary and interior routes and a re-evaluation of wilderness characteristics for this

area. Using both ONDA and BLM photos, field logs, and staff field knowledge, the BLM completed route analysis within the area in 2017.

The BLM determined that some of the routes ONDA identified as “ways” are boundary roads. Poker Jim Ridge proposed WSA is not one large roadless unit, but is comprised of smaller inventory units, which must be evaluated individually.

The BLM determined that the inventory units are bounded by County Road 3-10, 3-11, 3-12, BLM Roads 6155-C0, 8145-00, and BLM interim numbered routes 0100, 0105, 0107, 0108, 0113, 8145-AA, 8145-AB, 8145-AC, 8145-B, 8145-C, 8145-D, and 8145-F, and by private and state lands.

As a result, there are a total of 21 inventory units within the Warner Wetlands Area. Only two of these inventory units met the minimum size criteria and have been evaluated separately (OR-015-112B and OR-015-114). Five additional units, though small in size, were located immediately adjacent to, contiguous with, or were part of the USFWS Poker Jim Ridge WSA. These five small units (OR-015-114A, OR-015-114B, OR-015-114C, OR-015-114D, and OR-015-114E) vary in size from 23 to 243 acres, but all meet the exception to the size criteria.

These parcels are small, narrow units sandwiched in between interim Route number 0108 (Stone Corral) or state lands, and the current boundary of the Hart Mountain National Antelope Refuge. Portions or all of 3 of the units (OR-014-114A, OR-014-114B, and OR-014-114E) were formerly part of the refuge and the USFWS Poker Jim Ridge WSA. These parcels came under BLM-administration as a result of a jurisdictional transfer between BLM and the USFWS in 1998 which resulted in a change in the refuge boundary in this area. Those portions that were part of the WSA are recognized as still having wilderness characteristics without a need for further evaluation. The other 2 units (OR-014-114C and OR-014-114D) and portions of 2 units (OR-014-114A and OR-014-114E) are contiguous with the Poker Jim Ridge WSA and are the subject of this evaluation.

Additional background on the process that the BLM followed during this evaluation is contained in the document, *Wilderness Inventory Maintenance Process for the Lakeview Resource Area, BLM* and in the *Route Analysis Forms*. Both documents can be found in the wilderness inventory file.

DESCRIPTION OF CURRENT CONDITIONS:

The 5 small inventory units are currently comprised of BLM-administered lands located approximately 14 to 25 miles northeast of the town of Plush, Oregon. The topography can be described as flat valley bottom at the base of a steep fault block rim (Poker Jim Ridge). The dominant vegetation in these units is greasewood flats with some sagebrush and associated grasses.

(2) Is the unit in a natural condition? Yes X No N/A

A short primitive motorized route segment crosses two of the units and a short segment of fence intersects two other units, but overall they are devoid of human developments and are in a natural condition.

(3) Does the unit (or the remainder of the unit if a portion has been excluded due to unnaturalness and the remainder is of sufficient size) have outstanding opportunities for solitude? Yes X No N/A

None of these units would offer an outstanding opportunity for solitude standing on their own merits due to their small size and narrow shape. However, when considered in conjunction the solitude opportunities present on the larger adjacent WSA, they minimally enhance those opportunities.

(4) Does the unit (or the remainder of the unit if a portion has been excluded due to unnaturalness and the remainder is of sufficient size) have outstanding opportunities for primitive and unconfined recreation? Yes No X N/A

None of these units would offer an outstanding opportunity for primitive or unconfined recreation standing on their own merits due to their small size. Even when considered in conjunction the recreation opportunities documented on the adjacent WSA, they would only minimally enhance those existing limited opportunities.

(5) Does the unit have supplemental values? Yes X No N/A

As noted above, the USFWS found that the larger Poker Jim Ridge WSA had supplemental values that included important wildlife habitat. In addition to the species noted in the 1960's, bighorn sheep, a special status species, has been reintroduced to the Poker Jim Ridge area. The area continues to offer interesting geological and ecological values that are potentially of interest to the scientific community for scientific study. The small parcels would minimally enhance these existing supplemental values.

Summary of Findings and Conclusion

Unit Number and Name: OR-015-114A,B,C,D,E/ Poker Jim Contiguous Units

Summary Results of Analysis:

- 1. Does the area meet the size requirements? X Yes No
- 2. Does the area appear to be natural? X Yes No
- 3. Does the area offer outstanding opportunities for solitude or a primitive and unconfined type of recreation? X Yes No NA
- 4. Does the area have supplemental values? X Yes No NA

Conclusion (Check One):

- X The area- or a portion of the area- has wilderness character:
(items 1, 2 and 3 must be checked "yes").
- The area does not have wilderness character: *(any of items 1, 2 and 3 are checked "no").*

Prepared by (Member Names and Titles):



Chris Bishop: Outdoor Recreation Planner

 4/4/18
Date


Jami Ludwig: Assistant Field Manager

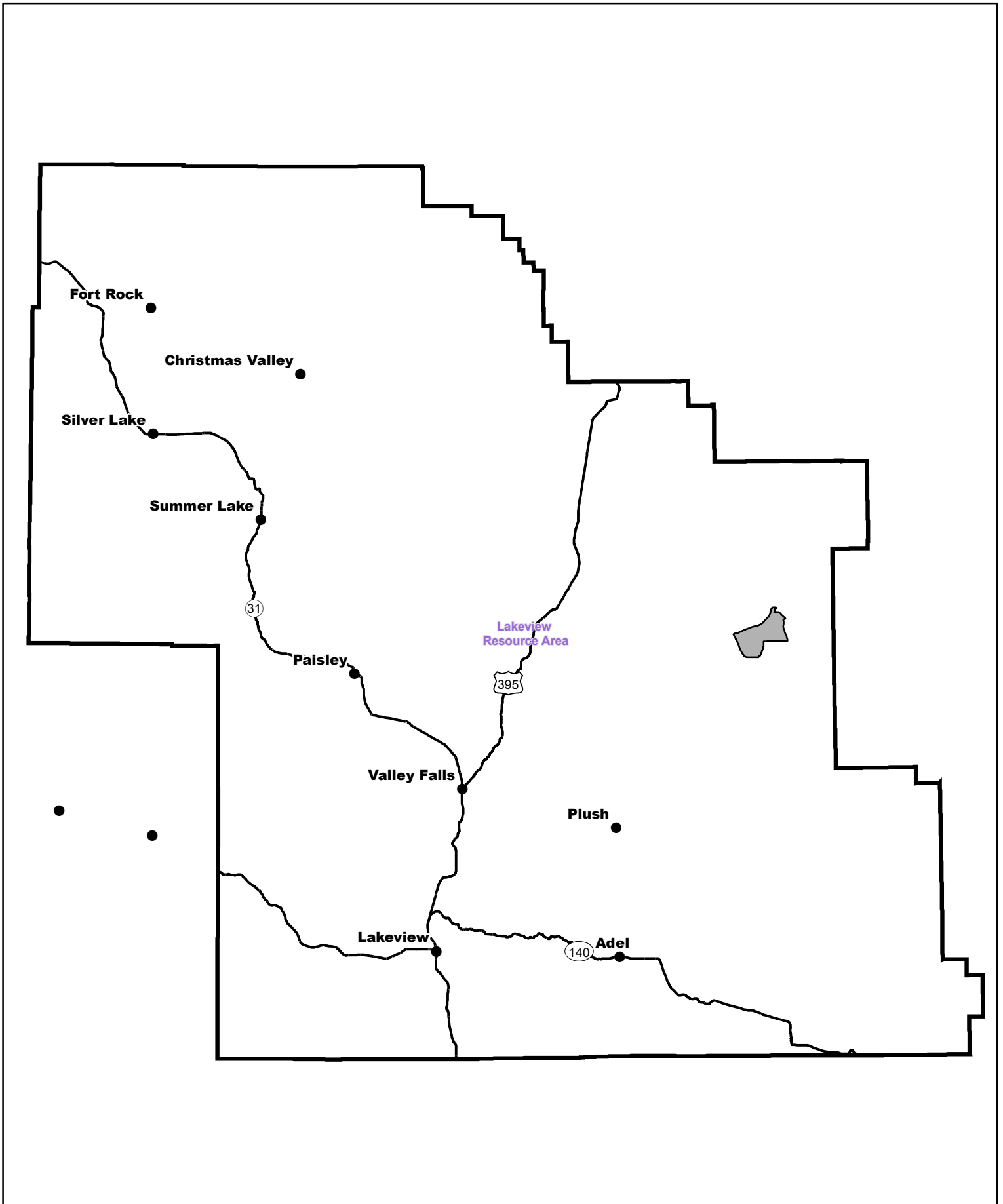
 6/4/18
Date


Approved by:

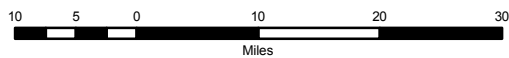

J. Todd Forbes
Field Manager


 6/4/18
Date

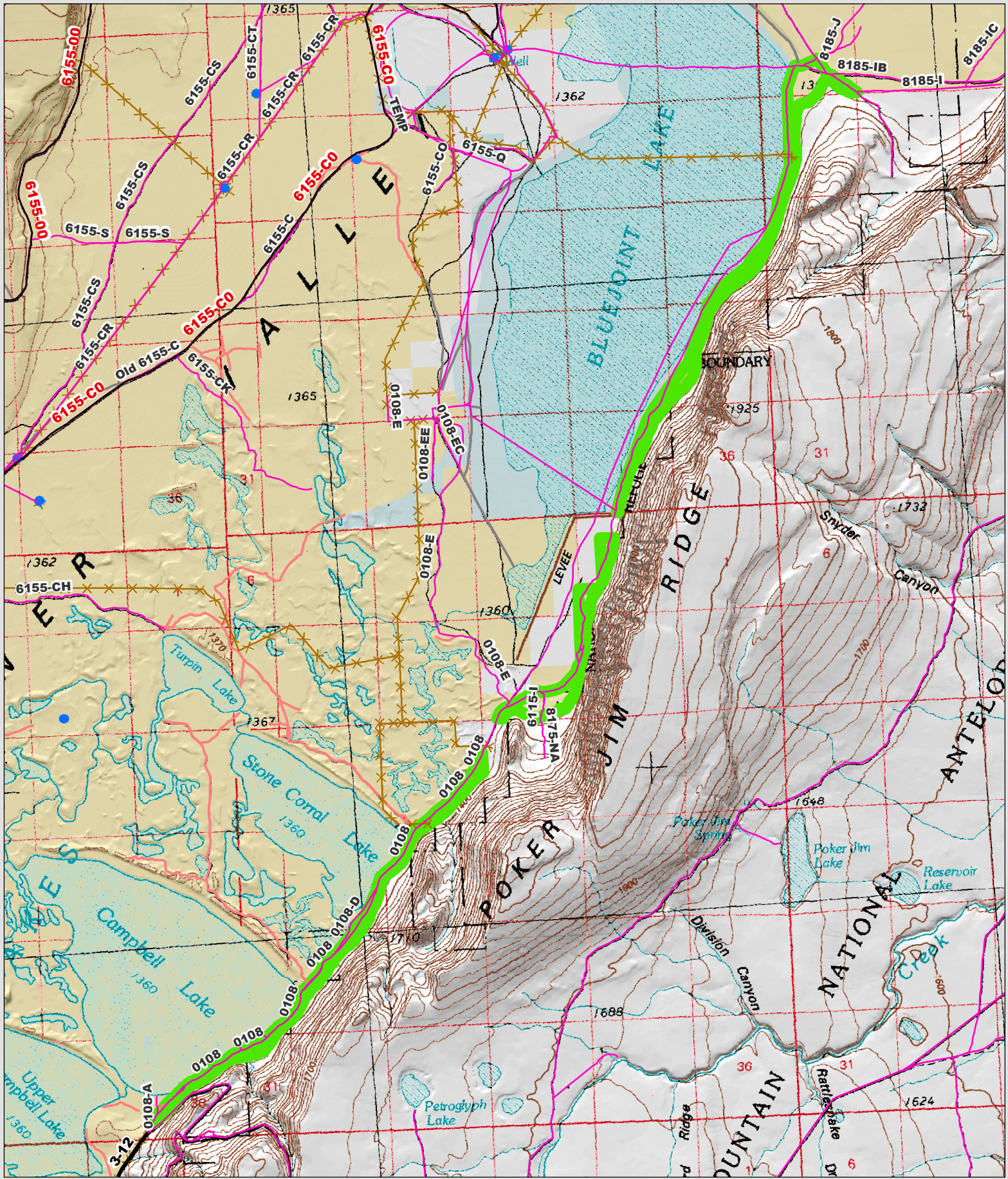
This form documents information that constitutes an inventory finding on wilderness characteristics. It does not represent a formal land use allocation or a final agency decision subject to administrative remedies under 43 CFR parts either 4 or 1610.5-2.

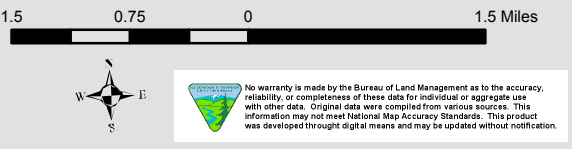


 Wilderness Character Inventory Unit



 No warranty is made by the Bureau of Land Management as to the accuracy, reliability, or completeness of these data for individual or aggregate use with other data. Original data were compiled from various sources. This information may not meet National Map Accuracy Standards. This product was developed through digital means and may be updated without notification.



<p>Ownership</p> <ul style="list-style-type: none"> Bureau of Land Management U.S. Forest Service Private/Unknown 	<p>Roads/Trails</p> <ul style="list-style-type: none"> Motorized Routes Highways Reclaiming Routes Interim Routes 	<p>Pipelines and Ditches</p> <ul style="list-style-type: none"> Ditch Water Pipeline Guzzler Fences 	<p>Water Developments</p> <ul style="list-style-type: none"> Dam Reservoir Spring Development Trough Water Diversion 	<p>Water Features</p> <ul style="list-style-type: none"> Water Tank Waterhole Well - Water 	<p>1.5 0.75 0 1.5 Miles</p> 
--------------------------------------------------------------------------------------------------------------------------------------------------------------------------------------------------------------------------------------------------------------------------------------------------------------------------------------------------------------------------------------------------------------------------------------------------------------------------------------------------------------------------------------------------------------------------------------------------------	------------------------------------------------------------------------------------------------------------------------------------------------------------------------------------------------------------------------------------------------------------------------------------------------------------------------------------------------------------------------------------------------------------------------------------------------------------------------------------------------------------------------------------------------------------------------------------------------------------------------	---------------------------------------------------------------------------------------------------------------------------------------------------------------------------------------------------------------------------------------------------------------------------------------------------------------------------------------------------------------------------------------------------------------------------------------------------------------------------------------------------------------------------------------------------------------------------------------------------------------------------------------------------------------------------------------------------------------------------------------	---------------------------------------------------------------------------------------------------------------------------------------------------------------------------------------------------------------------------------------------------------------------------------------------------------------------------------------------------------------------------------------------------------------------------------------------------------------------------------------------------------------------------------------------------------------------------------------------------------------------------------------------------------------------------------------------------------------------------------------------------------------------------------------------------	-------------------------------------------------------------------------------------------------------------------------------------------------------------------------------------------------------------------------------------------------------------------------------------------------------------------------------------------------------------------------------------------------------------------------------------------------------------------------------------------------------------------------------------------------------------------------------------	----------------------------------------------------------------------------------------------------------------------------

No warranty is made by the Bureau of Land Management as to the accuracy, reliability, or completeness of these data for individual or aggregate use with other data. Original data were compiled from various sources. This information may not meet National Map Accuracy Standards. This product was developed through digital means and may be updated without notification.