

Year: 2018

Inventory Unit Number/Name: OR-015-073B/ Packsaddle Draw East

**FORM 1**

**DOCUMENTATION OF BLM WILDERNESS INVENTORY FINDINGS ON RECORD**

**1. Is there existing BLM wilderness inventory information on all or part of this area?**

No \_\_\_\_\_ Yes  X  (if more than one unit is within the area, list the names/numbers of those units):

a) **Inventory Source:** Wilderness Inventory – Final Intensive Inventory Decisions; USDI BLM - Oregon and Washington, November 1980.

b) **Inventory Unit Number(s)/Name(s):** 1-73/ Packsaddle Draw

c) **Map Name(s)/Number(s):** Intensive Wilderness Inventory - Final Decisions; USDI BLM - Oregon, November 1980.

d) **BLM District(s)/Field Office(s):** Lakeview District, Lakeview Resource Area.

**2. BLM Inventory Findings on Record:**

Existing inventory information regarding wilderness characteristics (if more than one BLM inventory unit is associated with the area, list each unit and answer each question individually for each inventory unit):

Unit #	Size (historic acres)	Natural Condition? Y/N	Outstanding Solitude? Y/N	Outstanding Primitive & Unconfined Recreation? Y/N	Supplemental Values? Y/N
1-73	18,680	N	N	N	N/A
1-73B*	13,357	Y	N	N	N/A

\*The inventory of this unit was updated in 2012. However, due to a State Office-sponsored Wilderness Inventory Consistency Evaluation and subsequent guidance, the 2012 inventory analysis and findings are being replaced by this current 2018 inventory review. Documentation of the 2012 inventory can be found in the wilderness inventory project record.

***Summarize any known primary reasons for prior inventory findings listed in this table:***

In 1980, Unit 1-73 was described as having moderately rolling terrain dropping off sharply in the eastern third to Dry Valley. The major geographic feature was Packsaddle Draw, which ran east to west through the center of the unit. The draw contained some prominent erosion

features and basalt outcrops, but was less than 100 feet deep. The western third of the unit was a much flatter sagebrush area. There was a fenced enclosure in the western corner which was substantially noticeable in much of the western third of the unit. The unit contained approximately 15 miles of vehicle “ways.” Nearly half of these “ways” were heavily used and their visibility through the unit made them highly noticeable. There were five reservoirs in drainages, which were viewed as significant features in small areas, but did not create a substantial cumulative impact. It would be difficult for a visitor to avoid the cumulative presence of all the “ways,” fences and reservoirs. The works of man were substantially noticeable in the unit. Portions of Packsaddle Draw offered a person some degree of solitude, but these areas were small and would not represent an outstanding opportunity. Because of the unit's narrow width (one to four miles) and topography and the general exposure across the unit, it did not offer an outstanding opportunity for solitude. A person would have been readily influenced by others within this unit. The draw area offered some potential for hiking and wildlife observation as well as hunting. The opportunities presented in the unit were not outstanding within the region. The unit has some archeological values though none were documented.

**FORM 2**

**DOCUMENTATION OF CURRENT WILDERNESS INVENTORY  
CONDITIONS**

**Unit Number/Name:** OR-015-073B/ Packsaddle Draw East

**(1) Is the unit of sufficient size?** Yes  No

Between 2007 and 2016, BLM staff conducted field inventory in the area as part of a process to update its road and wilderness inventories and to gather additional information to supplement ONDA’s wilderness information. This fieldwork included photo documentation of the boundary and interior routes and a re-evaluation of wilderness characteristics for this area. Using both ONDA and BLM photos, field logs, and staff field knowledge, the BLM completed route analysis within the area in 2017.

The BLM determined that the inventory unit is bounded by BLM Roads 6120-00 to the west; 6110-00 to the south; 6110-00 and private lands to the east; and BLM interim numbered road 6110-K0 to the north.

Thus, based on these boundary and road determinations, the BLM found the Packsaddle Draw East inventory unit to exceed the minimum size criteria at approximately 10,374 acres of BLM-administered lands.

Additional background on the process the BLM followed during this evaluation is contained in the document, *Wilderness Inventory Maintenance Process for the Lakeview Resource Area, BLM* and in the *Route Analysis Forms*. Both documents can be found in the wilderness inventory file.

## DESCRIPTION OF CURRENT CONDITIONS:

This unit is located approximately 10 miles east of Alkali Lake, Oregon. It is approximately 5 miles long by 3.5 miles wide. Topographically, the majority of the unit is comprised of Dry Valley with rolling terrain and a butte (250 ft. high) in the southwest corner of the unit. Overall, the unit ranges in elevation from 4,525 to 5,217 feet. Vegetatively, the unit is composed of sagebrush and grasses.

(2) **Is the unit in a natural condition?** Yes  No  N/A

In 1980, historic Unit 1-73 contained a fenced enclosure in the western corner which was substantially noticeable in much of the western third of the unit. The unit contained approximately 15 miles of vehicle "ways." Nearly half of these "ways" were heavily used and their visibility through the unit made them highly noticeable. There were five reservoirs in drainages, which were viewed as significant features in small areas, but did not create a substantial cumulative impact. It would be difficult for a visitor to avoid the cumulative presence of all the "ways," fences and reservoirs. The works of man were substantially noticeable in the unit.

The unit currently contains the following man-made developments/disturbances: 9,923 acres of wildfire, 3,317 acres of seeding, 1.25 acres of chemical treatments, 6.25 miles of motorized routes, 3.5 miles of reclaiming routes, 3 miles of drift fence, 2 reservoirs, and 2 waterholes.

Presently, almost 4 decades after the original inventory, these developments are weathered and grown over with herbaceous grasses and sagebrush. As a result, developments now fade into the background of the unit and are largely only noticeable at a close distance (1/4<sup>th</sup> mile or less) and are thus substantially unnoticeable from further distances. Furthermore, many of the disturbances are located near the perimeter of the unit and, as such, have a small area of influence. Areas that were seeded or allowed to revegetate naturally, have been invaded by rabbit bush, sagebrush, and grasses and have returned to a natural, post fire, appearing condition.

Based on a review of all the available information including photos, staff knowledge, and field review, the BLM concluded that the unit appears in a natural condition where the imprints of man are substantially unnoticeable.

(3) **Does the unit** (or the remainder of the unit if a portion has been excluded due to unnaturalness and the remainder is of sufficient size) **have outstanding opportunities for solitude?** Yes  No  N/A

In 1980, historic Unit 1-73 offered a person some degree of solitude, but these areas were small and would not represent an outstanding opportunity. Because of the unit's narrow width (one to four miles), topography, and the general exposure across the unit, it did not offer an outstanding opportunity for solitude. A person would have been readily influenced by others within this unit.

The BLM acknowledges that there are limited opportunities for solitude within the Packsaddle Draw East inventory unit. Topographically, the majority of the unit is comprised of Dry Valley with rolling terrain and a butte (250 ft. high) in the southwest corner of the unit. Overall, the unit ranges in elevation from 4,525 to 5,217 feet. Vegetatively, the unit is composed of sagebrush and grasses. These opportunities are less than outstanding as the area's characteristic landscape lacks vegetative screening and existing topographic screening is insufficient to effectively allow those recreating in the area to avoid the sights and sounds of others.

Thus, for the reasons specified above and based on a review of all the available information including (BLM and citizen provided) photos, staff knowledge, and field review, the BLM concluded the Packsaddle Draw East inventory unit does not possess outstanding opportunities for solitude.

**(4) Does the unit (or the remainder of the unit if a portion has been excluded due to unnaturalness and the remainder is of sufficient size) have outstanding opportunities for primitive and unconfined recreation?** Yes \_\_\_\_\_ No  X  N/A \_\_\_\_\_

In 1980, historic Unit 1-73 offered some potential for hiking and wildlife observation as well as hunting. Though, the opportunities presented in the unit were not outstanding within the region.

The BLM finds the unit offers limited opportunities for hiking, horseback riding, backpacking, camping, wildlife observation, exploration, scenery, photography, stargazing, trapping, and hunting. However, the BLM determined that the unit does not possess outstanding opportunities for primitive and unconfined recreation through either the diversity of recreational activities possible in the area or by the outstanding quality of one opportunity relative to opportunities found within the Lakeview Resource Area.

**(5) Does the unit have supplemental values?** Yes \_\_\_\_\_ No \_\_\_\_\_ N/A  X

Supplemental values were not evaluated as the unit was determined to lack both outstanding opportunities for solitude and or primitive and unconfined recreation, and therefore does not meet the minimum wilderness criteria.

**Summary of Findings and Conclusion**

**Unit Number/Name:** OR-015-073B/ Packsaddle Draw East

**Summary Results of Analysis:**

1. Does the area meet the size requirements?        X   Yes      No
2. Does the area appear to be natural?                X   Yes      No
3. Does the area offer outstanding opportunities for solitude or a primitive and unconfined type of recreation?           Yes   X   No      NA
4. Does the area have supplemental values?           Yes      No   X   NA

**Conclusion (Check One):**

     The area- or a portion of the area- has wilderness character:  
*(items 1, 2 and 3 must be checked "yes").*

  X   The area does not have wilderness character: *(any of items 1, 2 and 3 are checked "no").*

**Prepared by (Member Names and Titles):**

  
Chris Bishop: Outdoor Recreation Planner

11/1/2018  
Date

  
Jami Ludwig: Assistant Field Manager

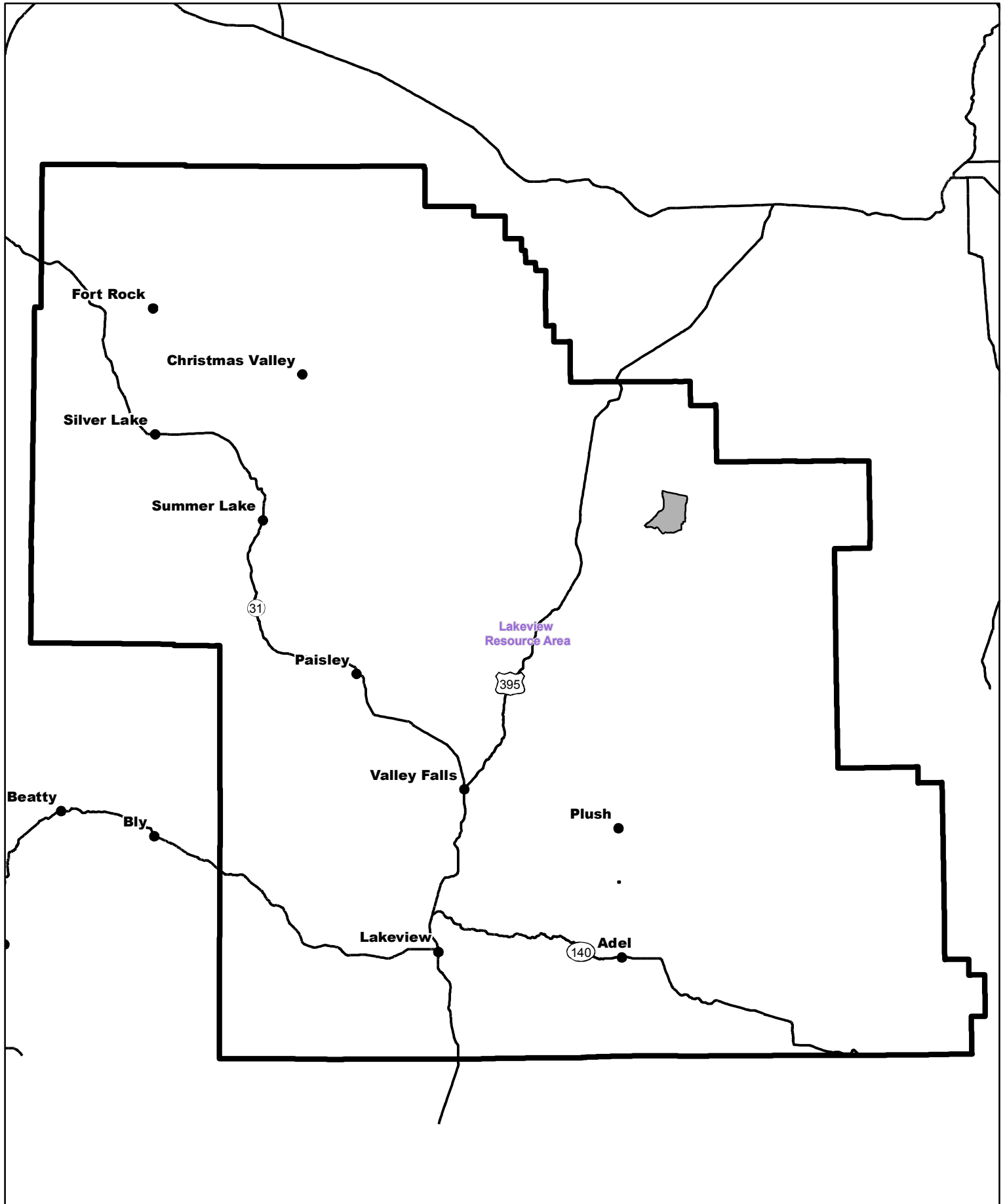
11/2/18  
Date


**Approved by:**

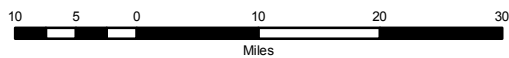
  
J. Todd Forbes  
Field Manager


11/2/18  
Date

*This form documents information that constitutes an inventory finding on wilderness characteristics. It does not represent a formal land use allocation or a final agency decision subject to administrative remedies under 43 CFR parts either 4 or 1610.5-2.*

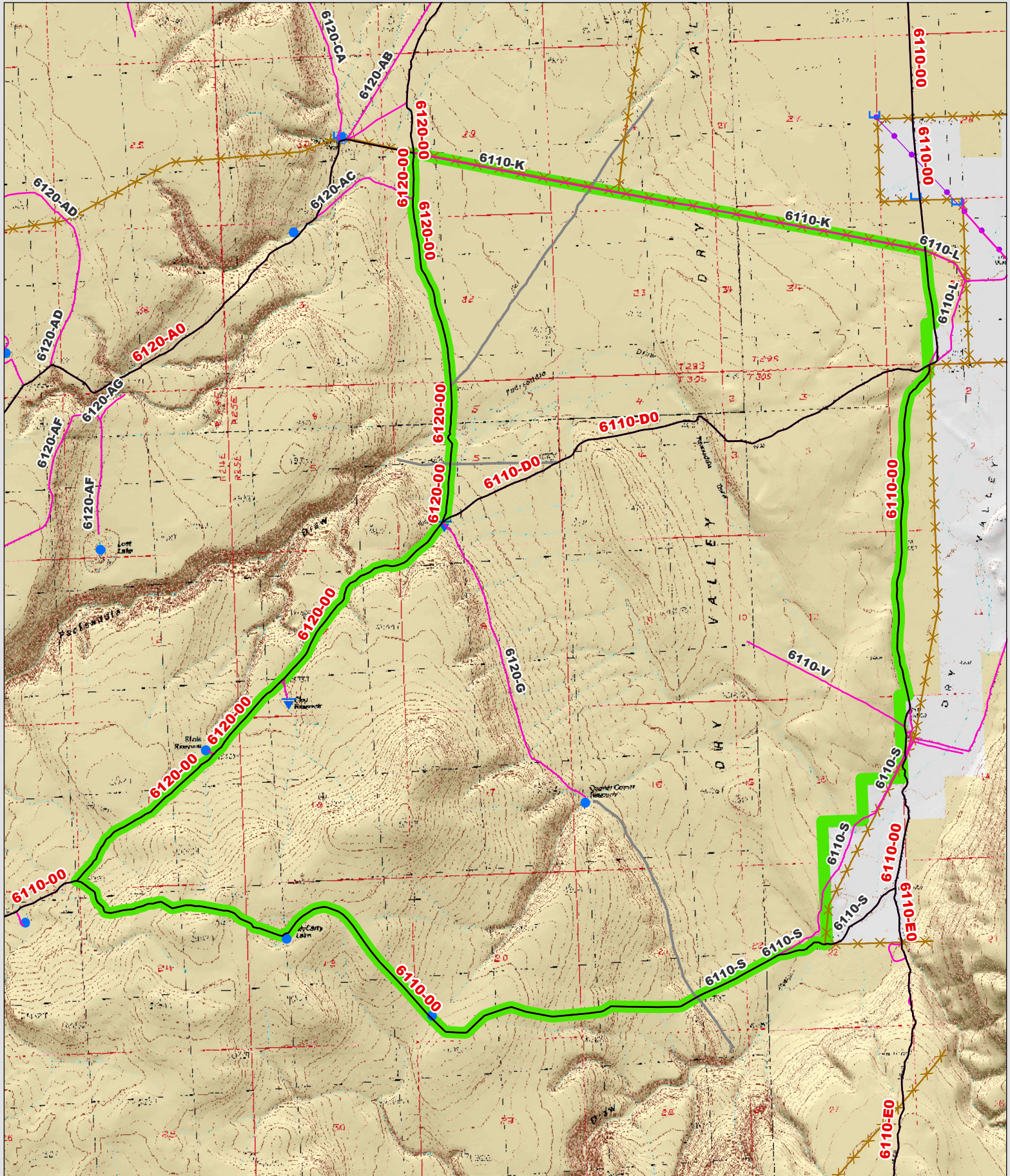


 Wilderness Character Inventory Unit



 No warranty is made by the Bureau of Land Management as to the accuracy, reliability, or completeness of these data for individual or aggregate use with other data. Original data were compiled from various sources. This information may not meet National Map Accuracy Standards. This product was developed through digital means and may be updated without notification.





**Wilderness Character Inventory Unit**

**Ownership**

- Bureau of Land Management
- U.S. Forest Service
- State
- Private/Unknown

**Roads/Trails**

- Motorized Routes
- Highways
- Reclaiming Routes
- Interim Routes

**Pipelines and Ditches**

- Ditch
- Water Pipeline
- Guzzler
- Fences

**Water Developments**

- Dam
- Reservoir
- Spring Development
- Trough
- Water Diversion

- Water Tank
- Waterhole
- Well - Water

1 0.5 0 1 Miles

North Arrow

No warranty is made by the Bureau of Land Management as to the accuracy, reliability, or completeness of these data for individual or aggregate use with other data. Original data were compiled from various sources. This information may not meet National Map Accuracy Standards. This product was developed through digital means and may be updated without notification.