

Year: 2018

Inventory Unit Number/Name: OR-015-092/ Northeast Warner Valley

**FORM 1**

**DOCUMENTATION OF BLM WILDERNESS INVENTORY FINDINGS ON RECORD**

**1. Is there existing BLM wilderness inventory information on all or part of this area?**

No        Yes   X   (if more than one unit is within the area, list the names/numbers of those units):

a) **Inventory Source:** Wilderness – Proposed Initial Inventory: Roadless Areas and Islands Which Clearly Do Not Have Wilderness Characteristics; USDI BLM - Oregon and Washington, April 1979.

b) **Inventory Unit Number(s)/Name(s):** 1-92

c) **Map Name(s)/Number(s):** Final Decision - Initial Wilderness Inventory: Public Lands and Islands Which Do Not Have Wilderness Characteristics and Units To Be Intensively Inventoried; USDI BLM - Oregon, August 1979.

d) **BLM District(s)/Field Office(s):** Lakeview District, Lakeview Resource Area.

**2. BLM Inventory Findings on Record:**

Existing inventory information regarding wilderness characteristics (if more than one BLM inventory unit is associated with the area, list each unit and answer each question individually for each inventory unit):

Unit #	Size (historic acres)	Natural Condition? Y/N	Outstanding Solitude? Y/N	Outstanding Primitive & Unconfined Recreation? Y/N	Supplemental Values? Y/N
1-92	6,040	Y	N	N	N/A
1-92*	6,493	Y	N	N	N/A

\*The inventory of this unit was updated in 2013. However, due to a State Office-sponsored Wilderness Inventory Consistency Evaluation and subsequent guidance, the 2013 inventory analysis and findings are being replaced by this current 2018 inventory review. Documentation of the 2013 inventory can be found in the wilderness inventory project record.

*Summarize any known primary reasons for prior inventory findings listed in this table:*

In 1979, the unit was described as a dry flat lake bottom with greasewood and sagebrush cover. The imprint of man's work was substantially unnoticeable. Due to the triangular shape of the unit and with a generally narrow aspect and surrounding roads, the unit did not provide outstanding opportunities for solitude or unconfined recreation.

**FORM 2**

**DOCUMENTATION OF CURRENT WILDERNESS INVENTORY  
CONDITIONS**

**Unit Number/Name:** OR-015-092/ Northeast Warner Valley

**(1) Is the unit of sufficient size?** Yes   X   No       

Between 2007 and 2016, BLM staff conducted field inventory in the area as part of a process to update its road and wilderness inventories and to gather additional information to supplement ONDA's wilderness information. This fieldwork included photo documentation of the boundary and interior routes and a re-evaluation of wilderness characteristics for this area. Using both ONDA and BLM photos, field logs, and staff field knowledge, the BLM completed route analysis within the area in 2017.

The BLM determined that the inventory unit is bounded by BLM Roads 7165-00 and State land to the north; 8185-00 to the east; and BLM interim numbered road 8185-H0 to the west. In addition, the unit contains a 160 acre inholding in the northeast corner.

Thus, based on these boundary and road determinations, the BLM found the Northeast Warner Valley inventory unit to exceed the minimum size criteria at approximately 6,443 acres of BLM-administered lands.

Additional background on the process the BLM followed during this evaluation is contained in the document, *Wilderness Inventory Maintenance Process for the Lakeview Resource Area, BLM* and in the *Route Analysis Forms*. Both documents can be found in the wilderness inventory file.

**DESCRIPTION OF CURRENT CONDITIONS:**

This unit is located approximately 29 miles northeast of Plush, Oregon. It is approximately 6 miles long by 2.5 miles wide. The entire unit fall within north Warner Valley. The area is a flat, dry lake bottom with greasewood, sagebrush, and grass. A dry shoreline along the northwestern boundary of the unit provides the only topographical relief. Overall, the unit ranges in elevation from 4,473 to 4,558 feet.

**(2) Is the unit in a natural condition?** Yes  No  N/A

In 1979, the imprint of man's work was determined to be substantially unnoticeable within historic Unit 1-92.

The unit currently contains the following man-made developments/disturbances: 370 acres of wildfire, 350 acres of seeding, 54 acres of mow strips, 4.5 miles of fence, and 2 waterholes.

Presently, almost 4 decades after the original inventory, these developments are weathered and grown over with herbaceous grasses and sagebrush. As a result, developments now fade into the background of the unit and are largely only noticeable at a close distance (1/4<sup>th</sup> mile or less) and are thus substantially unnoticeable from further distances. Furthermore, many of the disturbances are located near the perimeter of the unit and, as such, have a small area of influence. Areas that were allowed to revegetate naturally or seeded after fire have been invaded by rabbit/ sagebrush and have returned to a natural, post fire, appearing condition.

Based on a review of all the available information including photos, staff knowledge, and field review, the BLM concluded that the unit appears in a natural condition where the imprints of man are substantially unnoticeable.

**(3) Does the unit (or the remainder of the unit if a portion has been excluded due to unnaturalness and the remainder is of sufficient size) have outstanding opportunities for solitude?** Yes  No  N/A

In 1979, historic Unit 1-92 was found to lack outstanding opportunities for solitude.

The BLM acknowledges that there may be limited opportunities for solitude within the Northeast Warner Valley inventory unit. The entire unit falls within north Warner Valley. The area is a flat, dry lake bottom with greasewood, sagebrush, and grass. A dry shoreline along the northwestern boundary of the unit provides the only topographical relief. Overall, the unit ranges in elevation from 4,473 to 4,558 feet. These opportunities are less than outstanding as the area's characteristic landscape lacks vegetative screening and existing topographic screening is insufficient to effectively allow those recreating in the area to avoid the sights and sounds of others.

Thus, for the reasons specified above and based on a review of all the available information including (BLM and citizen provided) photos, staff knowledge, and field review, the BLM concluded the Northeast Warner Valley inventory unit does not possess outstanding opportunities for solitude.

**(4) Does the unit (or the remainder of the unit if a portion has been excluded due to unnaturalness and the remainder is of sufficient size) have outstanding opportunities for primitive and unconfined recreation?** Yes  No  N/A

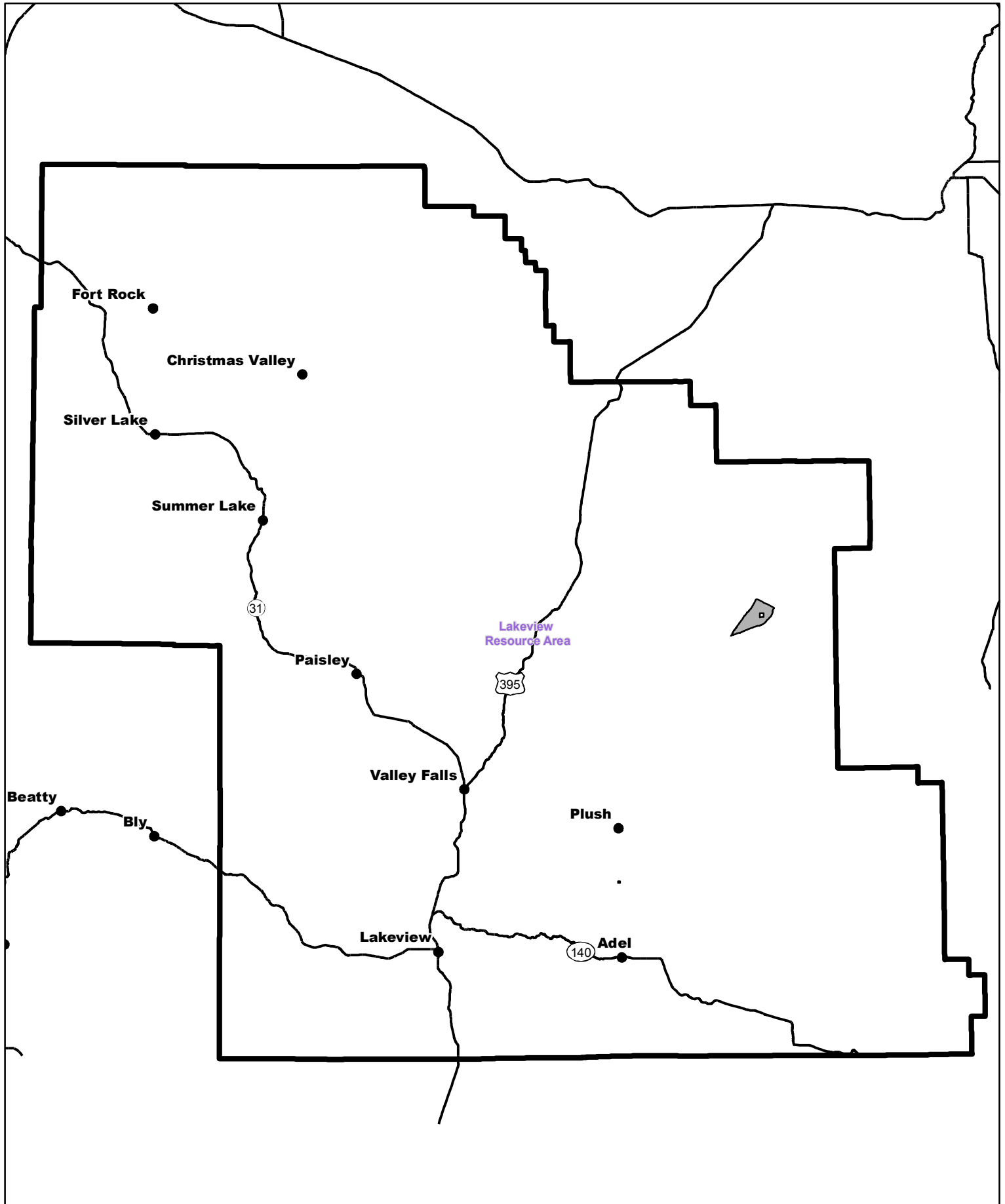
In 1979, historic Unit 1-92 was found to lack outstanding opportunities for primitive and unconfined recreation.


The BLM finds the unit offers limited opportunities for hiking, horseback riding, backpacking, camping, wildlife observation, exploration, scenery, photography, stargazing, trapping, and hunting. However, the BLM determined that the unit does not possess outstanding opportunities for primitive and unconfined recreation through either the diversity of recreational activities possible in the area or by the outstanding quality of one opportunity relative to opportunities found within the Lakeview Resource Area.

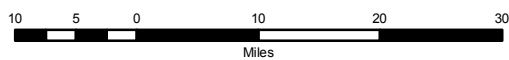
**(5) Does the unit have supplemental values?** Yes \_\_\_\_ No \_\_\_\_ N/A  X


Supplemental values were not evaluated as the unit was determined to lack both outstanding opportunities for solitude and or primitive and unconfined recreation, and therefore does not meet the minimum wilderness criteria.

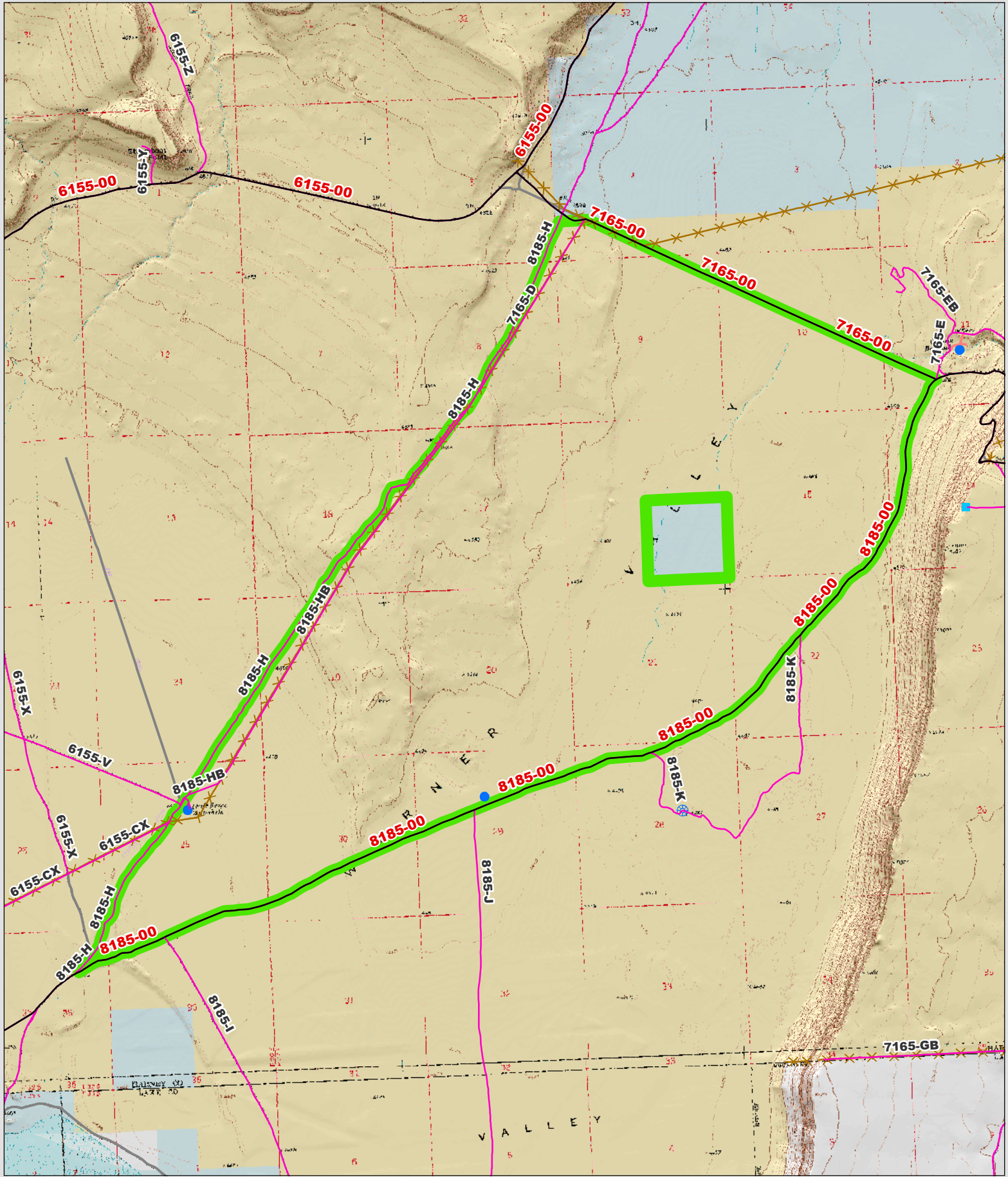




 Wilderness Character Inventory Unit



 No warranty is made by the Bureau of Land Management as to the accuracy, reliability, or completeness of these data for individual or aggregate use with other data. Original data were compiled from various sources. This information may not meet National Map Accuracy Standards. This product was developed through digital means and may be updated without notification.



**Wilderness Character Inventory Unit**

**Ownership**

- Bureau of Land Management
- U.S. Forest Service
- State
- Private/Unknown

**Roads/Trails**

- Motorized Routes
- Highways
- Reclaiming Routes
- Interim Routes

**Pipelines and Ditches**

- Ditch
- Water Pipeline
- Guzzler
- Fences

**Water Developments**

- Dam
- Reservoir
- Spring Development
- Trough
- Water Diversion

- Water Tank
- Waterhole
- Well - Water

1 0.5 0 1 Miles

No warranty is made by the Bureau of Land Management as to the accuracy, reliability, or completeness of these data for individual or aggregate use with other data. Original data were compiled from various sources. This information may not meet National Map Accuracy Standards. This product was developed through digital means and may be updated without notification.