

Year: 2018

Inventory Unit Number/Name: OR-015-075/ Kit Canyon*

FORM 1

DOCUMENTATION OF BLM WILDERNESS INVENTORY FINDINGS ON RECORD

1. Is there existing BLM wilderness inventory information on all or part of this area?

No _____ Yes X (if more than one unit is within the area, list the names/numbers of those units):

a) **Inventory Source:** Wilderness Inventory – Final Intensive Inventory Decisions; USDI BLM - Oregon and Washington, November 1980.

b) **Inventory Unit Number(s)/ Name(s):** 1-75/ Egan Cabin

c) **Map Name(s)/Number(s):** Intensive Wilderness Inventory - Final Decisions; USDI BLM - Oregon, November 1980.

d) **BLM District(s)/Field Office(s):** Lakeview District, Lakeview Resource Area.

*Note: Unit name was changed to better reflect values and features found within the unit, and to reduce confusion of similarly named inventory units.

2. BLM Inventory Findings on Record:

Existing inventory information regarding wilderness characteristics (if more than one BLM inventory unit is associated with the area, list each unit and answer each question individually for each inventory unit):

Unit#	Size (historic acres)	Natural Condition? Y/N	Outstanding Solitude? Y/N	Outstanding Primitive & Unconfined Recreation? Y/N	Supplemental Values? Y/N
1-75	6,240	Y	N	N	N
1-75*	6,114	Y	Unknown	Y	Y

* The inventory of this unit was updated in 2013. However, due to a State Office-sponsored Wilderness Inventory Consistency Evaluation and subsequent guidance, the 2013 inventory analysis and findings are being replaced by this current 2018 inventory review. Documentation of the 2013 inventory can be found in the wilderness inventory project record.

Summarize any known primary reasons for prior inventory findings listed in this table:

Historic Unit 1-75 was described as a slightly rolling sage flat deeply cut by four drainages opening to the south into Kit Canyon. The north half of the unit was quite flat. The maximum canyon depth on the south end is approximately 300 feet. Vegetation in the unit was a sagebrush community with scattered juniper. The unit contained three reservoirs and several small “ways” along the west side of the unit. There was minimal disturbance around the Egan Cabin area. The unit was apparently natural and the works of man were not substantially noticeable in the unit. The canyons in the unit provided a visitor to the unit with some degree of solitude. The small size of the unit and the limited extent to which the canyon system would shield visitors from the presence of others in the unit did not provide what could be considered an outstanding opportunity for solitude. The high degree of exposure on the majority of the unit was not offset by the qualities of the canyons. The unit would present an opportunity for hunting and wildlife observation with a limited opportunity for hiking the canyons. The exposure and small size of the unit did not allow for outstanding opportunities to pursue primitive and unconfined recreation. No known supplemental values were present.

FORM 2

DOCUMENTATION OF CURRENT WILDERNESS INVENTORY CONDITIONS

Unit Number/Name: OR-015-075/ Kit Canyon

(1) Is the unit of sufficient size? Yes No

Between 2008 and 2016, BLM staff conducted field inventory in the area as part of a process to update its road and wilderness inventories and to gather additional information to supplement ONDA’s wilderness information. This fieldwork included photo documentation of the boundary and interior routes and a re-evaluation of wilderness characteristics for this area. Using both ONDA and BLM photos, field logs, and staff field knowledge, the BLM completed route analysis within the area in 2017.

The BLM determined that the inventory unit is bounded by BLM Roads 6165-00 to the west; 6155-F0 and BLM interim numbered road 6155-FC to the south; and 6165-E0 to the east.

Thus, based on these boundary and road determinations, the BLM found the Kit Canyon inventory unit to exceed the minimum size criteria at approximately 6,107 acres of BLM-administered lands.

Additional background on the process that the BLM followed during this evaluation is contained in the document, *Wilderness Inventory Maintenance Process for the Lakeview Resource Area, BLM* and in the *Route Analysis Forms*. Both documents can be found in the wilderness inventory file.

DESCRIPTION OF CURRENT CONDITIONS:

This unit is located approximately 37 miles north of Plush, Oregon. The unit is approximately 4.75 miles long by 3.5 miles wide. Topographically the unit is diverse. The unit ranges in elevation from 4,950 ft. to 5,660 feet. The unit is dominated by Kit Canyon (up

to 300 ft. deep, and 13 miles in total), with half a dozen fingers fanning out across the unit, including Hole-in-the-Ground in the northwest corner. The northeast corner of the unit is comprised of a large domed butte (175 ft. high). Vegetatively, approximately 200 acres of the unit is covered in moderate to high-density western juniper stands, with old-growth characteristics within the southwest and southeast interior drainages and rims. The remaining vegetation in the unit consists of grasses and sagebrush with scattered western juniper. Wildfires burned approximately 4,203 acres in northern portion of the unit in 1986 and 2001. Both fires were allowed to revegetate naturally.

(2) Is the unit in a natural condition? Yes No N/A

In 1980, historic Unit-1-75 contained three reservoirs, several small “ways” along the west side of the unit, and minimal disturbance around the Egan Cabin area. Overall, the unit was found to be apparently natural with the works of man substantially unnoticeable.

The unit currently contains the following man-made developments/disturbances: 4,203 acres of wildfire, 2 miles of motorized routes, 1.5 miles of reclaiming routes, 2 miles of rehabbed cat line, 4 waterholes, 2 reservoirs, 2 primitive wilderness therapy group campsites, and collapsed remains of Egan Cabin.

Presently, almost 4 decades after the original inventory, these developments are weathered and grown over with herbaceous grasses, sagebrush, and juniper. As a result, developments now fade into the background of the unit and are largely only noticeable at a close distance (1/4th mile or less) and are thus substantially unnoticeable from further distances. The topography and vegetation of the area also plays a large role in screening disturbances and man-made developments. Furthermore, many of the disturbances are located near the perimeter of the unit and, as such, have a small area of influence. Areas that were allowed to revegetate naturally after fire have been invaded by rabbit/ sagebrush and have returned to a natural, post fire, appearing condition. In addition, cat lines, now almost 20-30 years old, have also largely revegetated.

Based on a review of all the available information including photos, staff knowledge, and field review, the BLM concluded that the unit appears in a natural condition where the imprints of man are substantially unnoticeable.

(3) Does the unit (or the remainder of the unit if a portion has been excluded due to unnaturalness and the remainder is of sufficient size) **have outstanding opportunities for solitude?** Yes No N/A

In 1980, historic Unit 1-75 was found to possess several canyons, which provided visitors to the unit with some degree of solitude. However, the small size of the unit and the limited extent to which the canyon system was able to shield visitors from the presence of others in the unit was not considered an outstanding opportunity for solitude. Ultimately, the high degree of exposure on the majority of the unit was not offset by the solitude found within the canyons.

The BLM determined that there are several outstanding opportunities for solitude across the unit due to topographic and vegetative screening. The unit is approximately 4.75 miles long by 3.5 miles wide. Topographically the unit is diverse. The unit ranges in elevation from 4,950 ft. to 5,660 feet. The unit is dominated by Kit Canyon (up to 300 ft. deep, and 13 miles in total), with half a dozen fingers fanning out across the unit, including Hole-in-the-Ground in the northwest corner. The northeast corner of the unit is comprised of a large domed butte (175 ft. high). Vegetatively, western juniper stands have greatly expanded in height, width, and density. Approximately 200 acres of the unit is covered in moderate to high-density western juniper stands, with old-growth characteristics within the southwest and southeast interior drainages and rims. Due to the above-described compartmentalized topography and vegetative conditions within the unit, one would easily be able to avoid the sights and sounds of others within the unit.

Thus, for the reasons specified above and based on a review of all the available information including (BLM and citizen provided) photos, staff knowledge, and field review, the BLM concluded the Kit Canyon inventory unit possesses outstanding opportunities for solitude.

(4) Does the unit (or the remainder of the unit if a portion has been excluded due to unnaturalness and the remainder is of sufficient size) have outstanding opportunities for primitive and unconfined recreation? Yes X No N/A

In 1980, historic Unit 1-75 offered opportunities for hunting and wildlife observation with a limited opportunity for hiking within the canyons. Ultimately, due to the exposure and small size of the unit, primitive and unconfined recreation was found to be less than outstanding.

The BLM finds the combination and diversity of hiking, horseback riding, backpacking, camping, wildlife observation, exploration, scenery, photography, stargazing, trapping, and hunting are exceptional. The BLM determined that options for exploration of the units many miles of drainages, as well as, viewing interesting geological formations within Kit Canyon and Hole-in-the-Ground, represent unique opportunities for primitive and unconfined recreation.

(5) Does the unit have supplemental values? Yes X No N/A

The BLM found the unit to possess archaeological and geological values as well as the presence of various bats, mule deer, pronghorn antelope, California bighorn sheep, and sage-grouse habitat. The unit also contains Egan cabin, a historic structure/site on the south side of the unit, as well as, a least one documented stacked rock wall that is likely of historic significance.

Summary of Findings and Conclusion

Unit Number and Name: OR-015-075/ Kit Canyon

Summary Results of Analysis:

- 1. Does the area meet the size requirements? X Yes No
- 2. Does the area appear to be natural? X Yes No
- 3. Does the area offer outstanding opportunities for solitude or a primitive and unconfined type of recreation? X Yes No NA
- 4. Does the area have supplemental values? X Yes No NA

Conclusion (Check One):

- X The area- or a portion of the area- has wilderness character: *(items 1, 2 and 3 must be checked "yes")*.
- The area does not have wilderness character: *(any of items 1, 2 and 3 are checked "no")*.

Prepared by (Member Names and Titles):



Chris Bishop: Outdoor Recreation Planner

6/4/18
Date


Jam Ludwig: Assistant Field Manager

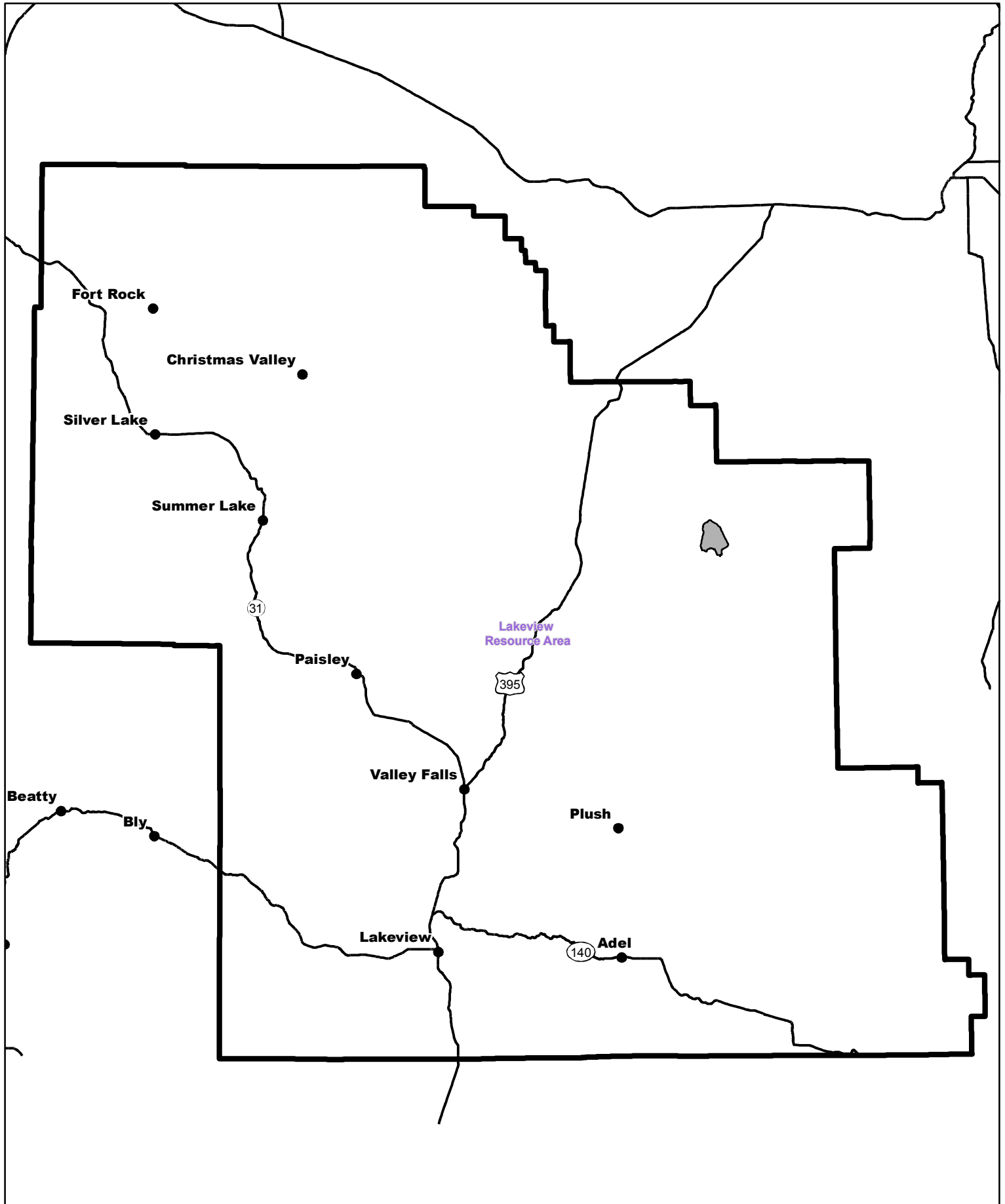
6/4/18
Date


Approved by:

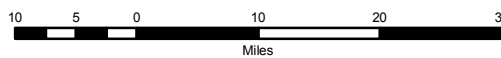

J. Todd Forbes
Field Manager


6/4/18
Date

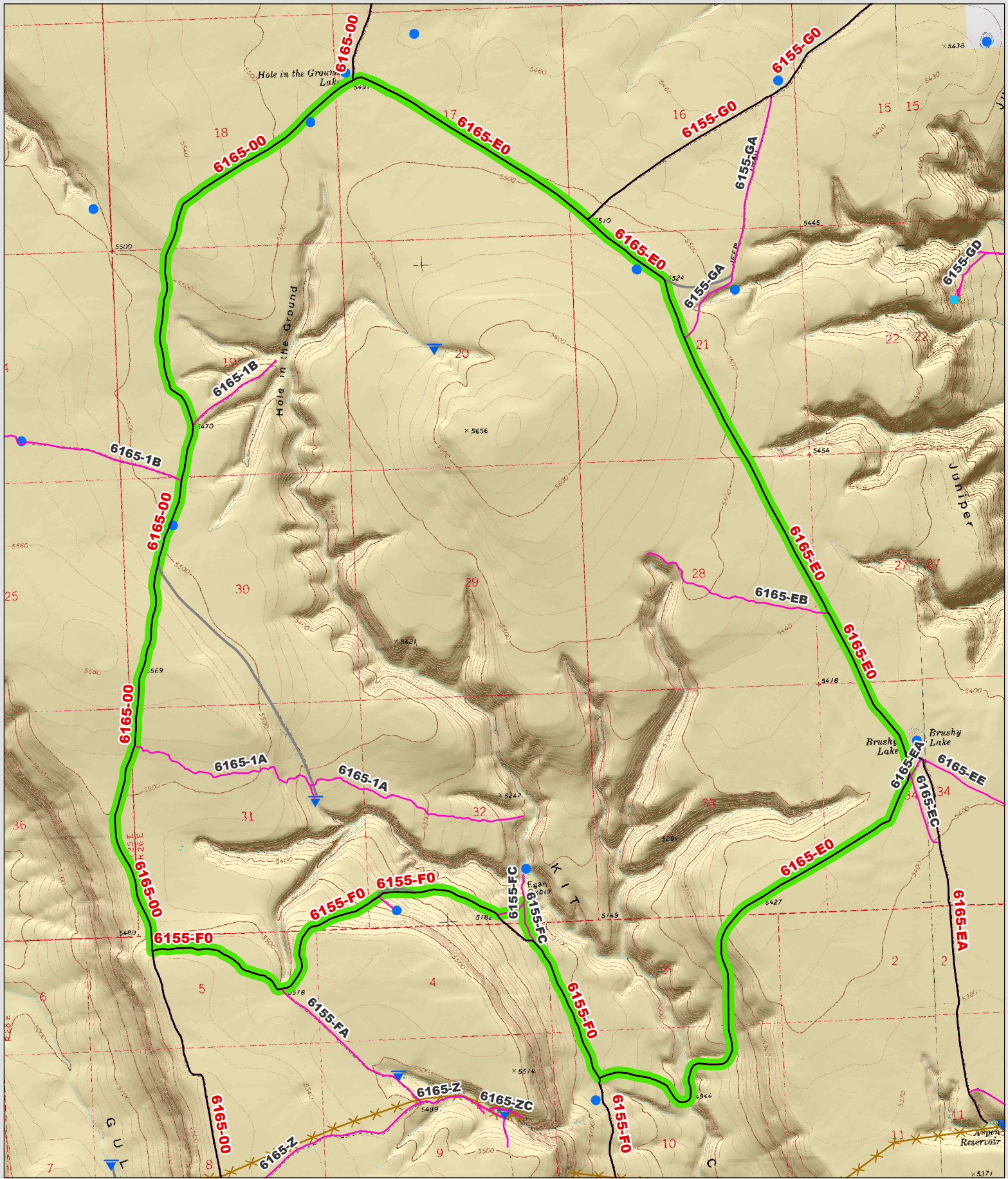
This form documents information that constitutes an inventory finding on wilderness characteristics. It does not represent a formal land use allocation or a final agency decision subject to administrative remedies under 43 CFR parts either 4 or 1610.5-2.



 Wilderness Character Inventory Unit



 No warranty is made by the Bureau of Land Management as to the accuracy, reliability, or completeness of these data for individual or aggregate use with other data. Original data were compiled from various sources. This information may not meet National Map Accuracy Standards. This product was developed through digital means and may be updated without notification.



Wilderness Character Inventory Unit

Ownership

- Bureau of Land Management
- U.S. Forest Service
- State
- Private/Unknown

Roads/Trails

- Motorized Routes
- Highways
- Reclaiming Routes
- Interim Routes

Pipelines and Ditches

- Ditch
- Water Pipeline
- Guzzler
- Fences

Water Developments

- Dam
- Reservoir
- Spring Development
- Trough
- Water Diversion

- Water Tank
- Waterhole
- Well - Water

0.65 0.325 0 0.65 Miles

No warranty is made by the Bureau of Land Management as to the accuracy, reliability, or completeness of these data for individual or aggregate use with other data. Original data were compiled from various sources. This information may not meet National Map Accuracy Standards. This product was developed through digital means and may be updated without notification.