

Year: 2018

Inventory Unit Number/Name: OR-015-087/ Horseshoe Rim

**FORM 1**

**DOCUMENTATION OF BLM WILDERNESS INVENTORY  
FINDINGS ON RECORD**

**1. Is there existing BLM wilderness inventory information on all or part of this area?**

No \_\_\_\_\_ Yes  X  (if more than one unit is within the area, list the names/numbers of those units):

a) **Inventory Source:** Wilderness Inventory – Final Intensive Inventory Decisions; USDI BLM - Oregon and Washington, November 1980.

b) **Inventory Unit Number(s)/ Name(s):** 1-87/ Horseshoe Rim

c) **Map Name(s)/Number(s):** Intensive Wilderness Inventory - Final Decisions; USDI BLM - Oregon, November 1980.

d) **BLM District(s)/Field Office(s):** Lakeview District, Lakeview Resource Area.

**2. BLM Inventory Findings on Record**

Existing inventory information regarding wilderness characteristics (if more than one BLM inventory unit is associated with the area, list each unit/acreage and answer each question individually for each inventory unit):

Unit#	Size (historic acres)	Natural Condition? Y/N	Outstanding Solitude? Y/N	Outstanding Primitive & Unconfined Recreation? Y/N	Supplemental Values? Y/N
1-87	21,000	Y	N	N	N
1-87*	15,021	Y	N	N	N/A

\* The inventory of this unit was updated in 2011. However, due to a State Office-sponsored Wilderness Inventory Consistency Evaluation and subsequent guidance, the 2011 inventory analysis and findings are being replaced by this current 2018 inventory review. Documentation of the 2011 inventory can be found in the wilderness inventory project record.

**Summarize any known primary reasons for prior inventory findings listed in this table:**

Historic Unit 1-87 was described as an ancient lakebed with low rolling, sage-covered, hills. Portions of The unit contains two distinctive geologic features, Horseshoe Rim and the Horseshoe. A “way” crossed the southeast corner of the unit and followed the dike of the

ancient lakebed to Sherlock Reservoir. It was only a minor intrusion and was not very noticeable. The southern end of the unit had numerous jeep trails created by sunstone collectors. The majority of the unit appeared generally natural, and free from the works of man. The unit did not meet the criteria for outstanding solitude. One would have found it difficult to avoid the sights and sounds of others because the unit lacked significant topographic relief and vegetative cover. There was a limited opportunity for solitude in the Horseshoe Rim area. The unit provided opportunities for rock hounding, hunting and limited potential for hiking. With the exception of the Horseshoe Rim area, the topography in this area was extremely flat and exposed, and did not offer outstanding opportunities. The Horseshoe Rim area on the eastern side of the unit was a somewhat interesting geologic feature; however, size and topography limit recreation potential in this area. Archaeological values were likely to exist in the area, though none were documented.

**FORM 2**

**DOCUMENTATION OF CURRENT WILDERNESS INVENTORY  
CONDITIONS**

**Unit Number/Name:** OR-015-087/ Horseshoe Rim

**(1) Is the unit of sufficient size?** Yes  X  No \_\_\_\_\_

Between 2008 and 2016, BLM staff conducted field inventory in the area as part of a process to update its road and wilderness inventories and to gather additional information to supplement ONDA's wilderness information. This fieldwork included photo documentation of the boundary and interior routes and a re-evaluation of wilderness characteristics for this area. Using both ONDA and BLM photos, field logs, and staff field knowledge, the BLM completed route analysis within the area in 2017.

The BLM determined that the inventory unit is bounded by BLM Roads 6165-00 on the north; 6195-00 on the east; BLM interim numbered road 6195-AC and private lands on the south; and private lands on the west. Due to changes in boundary determinations (road corrections), approximately 4,000 acres were removed from the southern portion of the original inventory unit.

Thus, based on these boundary and road determinations, the BLM found the Horseshoe Rim inventory unit to exceed the minimum size criteria at approximately 15,017 acres of BLM-administered lands.

Additional background on the process that the BLM followed during this evaluation is contained in the document, *Wilderness Inventory Maintenance Process for the Lakeview Resource Area, BLM* and in the *Route Analysis Forms*. Both documents can be found in the wilderness inventory file.

**DESCRIPTION OF CURRENT CONDITIONS:**

This unit is located approximately 25 miles north of Plush, Oregon. The unit is approximately 8 miles long by 4.5 miles wide. Topographically the unit is dominated by three distinctive geologic features including: Horseshoe Rim, The Horseshoe (100-350 ft. deep and 5 miles of rims), and the southern two miles of Horseshoe Ridge (250 ft. high). In addition, the unit contains a small portion of Sagebrush Knoll Draw in the southwest and approximately 6 miles, north to south (5-25 ft. deep), of an unnamed drainage in the western third of the unit. The remainder of the unit is mostly flat, sloping slightly to the south, with rolling, sagebrush-covered, hills.

**(2) Is the unit in a natural condition?** Yes  No  N/A

In 1980, historic Unit 1-87 contained a “way” and a dike near Sherlock Reservoir, which were described as minor intrusions that were not very noticeable. While, the southern end of the unit had numerous jeep trails created by sunstone collectors. Overall, the majority of the unit appeared generally natural, free from the works of man.

The unit currently contains the following man-made developments/disturbances: 820 acres of chemical treatments, 6.5 miles of fence lines, 3 miles of motorized routes, 5 miles of reclaiming routes, 2 waterholes, 2 reservoirs, and 1 wildlife guzzler.

Presently, almost 4 decades after the original inventory, these developments are weathered and grown over with herbaceous grasses and sagebrush. As a result, developments now fade into the background of the unit and are largely only noticeable at a close distance (1/4<sup>th</sup> mile or less) and are thus substantially unnoticeable from further distances. The topography of the area also plays a large role in screening disturbances and man-made developments. Furthermore, many of the disturbances are located near the perimeter of the unit and, as such, have a small area of influence.

Based on a review of all the available information including photos, staff knowledge, and field review, the BLM concluded that the unit appears in a natural condition where the imprints of man are substantially unnoticeable.

**(3) Does the unit (or the remainder of the unit if a portion has been excluded due to unnaturalness and the remainder is of sufficient size) have outstanding opportunities for solitude?** Yes  No  N/A

In 1980, historic Unit 1-87 was found not meet the criteria for outstanding solitude. One would have found it difficult to avoid the sights and sounds of others as the unit lacked significant topographic relief and vegetative cover. However, the inventory noted limited opportunities for solitude in the Horseshoe Rim area.

The BLM acknowledges that there are some opportunities for solitude within the Horseshoe Rim inventory unit including The Horseshoe, Horseshoe Rim, Horseshoe Ridge and portions of two drainages. However, these opportunities are less than outstanding as the area’s

characteristic landscape lacks vegetative screening and existing topographic screening (mostly flat with rolling hills) is insufficient to effectively allow those recreating in the area to avoid the sights and sounds of others.

Thus, for the reasons specified above and based on a review of all the available information including (BLM and citizen provided) photos, staff knowledge, and field review, the BLM concluded the Horseshoe Rim inventory unit does not possess outstanding opportunities for solitude.

**(4) Does the unit** (or the remainder of the unit if a portion has been excluded due to unnaturalness and the remainder is of sufficient size) **have outstanding opportunities for primitive and unconfined recreation?** Yes  No  N/A

In 1980, historic Unit 1-87 offered opportunities for rock hounding, hunting and limited potential for hiking, with the exception of the Horseshoe Rim area, which was noted as a somewhat interesting geologic feature. However, size and topography were found to limit recreation potential in this area.

The BLM finds the combination and diversity of hiking, horseback riding, backpacking, camping, wildlife observation, exploration, scenery, photography, stargazing, trapping, and hunting are exceptional within the unit. The BLM determined that options for hiking along distinctive geological formations such as The Horseshoe and Horseshoe Rim represent unique opportunities for primitive and unconfined recreation.

**(5) Does the unit have supplemental values?** Yes  No  N/A

The BLM found the unit to possess archaeological and geological values as well as the presence of mule deer, pronghorn antelope, pygmy rabbit, and sage-grouse habitat.

**Summary of Findings and Conclusion**

**Unit Number and Name:** OR-015-087/ Horseshoe Rim

**Summary Results of Analysis:**

- 1. Does the area meet the size requirements?       X   Yes        No
- 2. Does the area appear to be natural?              X   Yes        No
- 3. Does the area offer outstanding opportunities for solitude or a primitive and unconfined type of recreation?              X   Yes        No        NA
- 4. Does the area have supplemental values?          X   Yes        No        NA


**Conclusion (Check One):**

- X   The area- or a portion of the area- has wilderness character: *(items 1, 2 and 3 must be checked "yes")*.
- The area does not have wilderness character: *(any of items 1, 2 and 3 are checked "no")*.

**Prepared by (Member Names and Titles):**


  
Chris Bishop: Outdoor Recreation Planner

2/26/18  
Date

  
Jami Ludwig: Assistant Field Manager

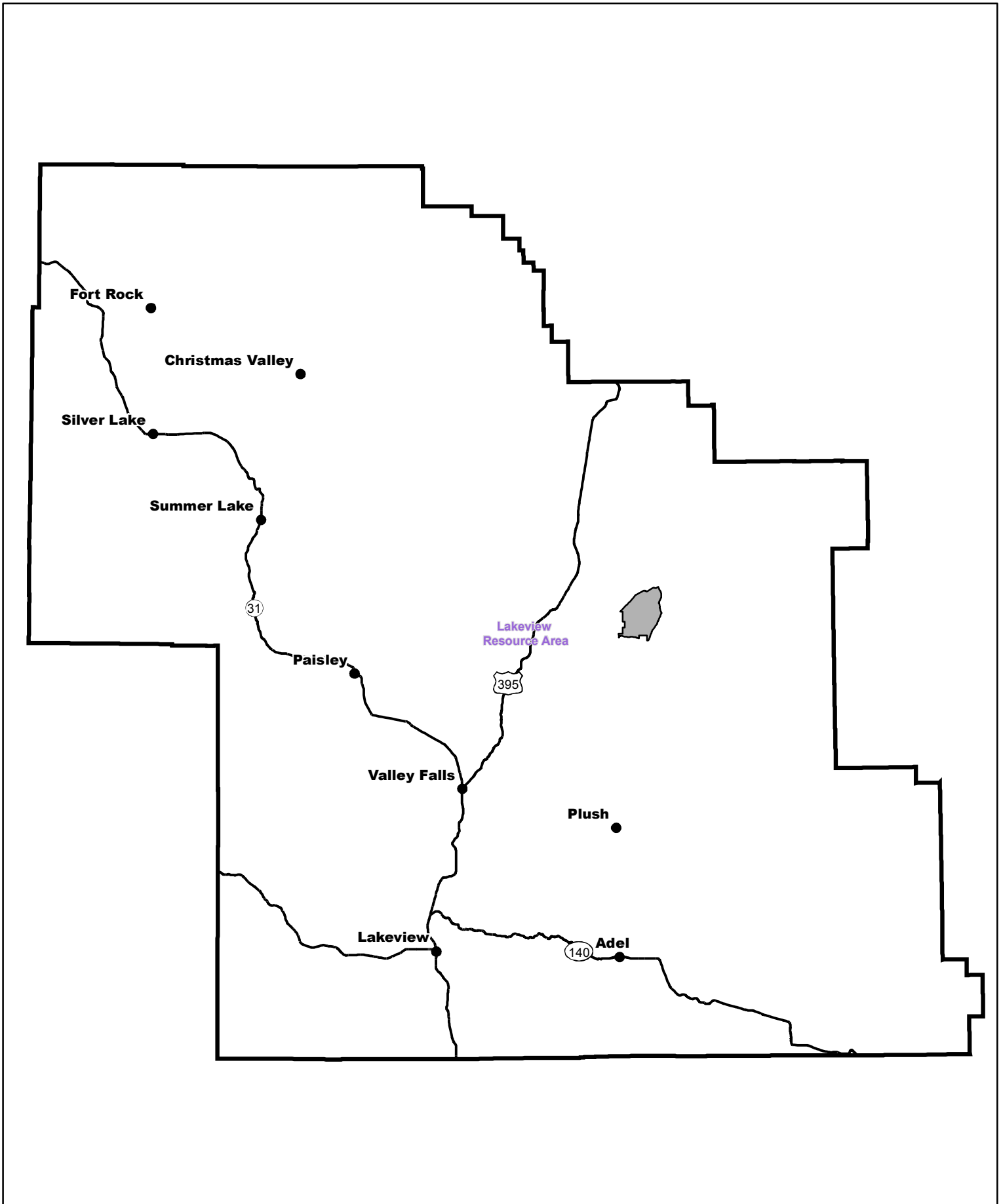
2/28/18  
Date


**Approved by:**

  
**J. Todd Forbes**  
Field Manager


2/28/18  
Date

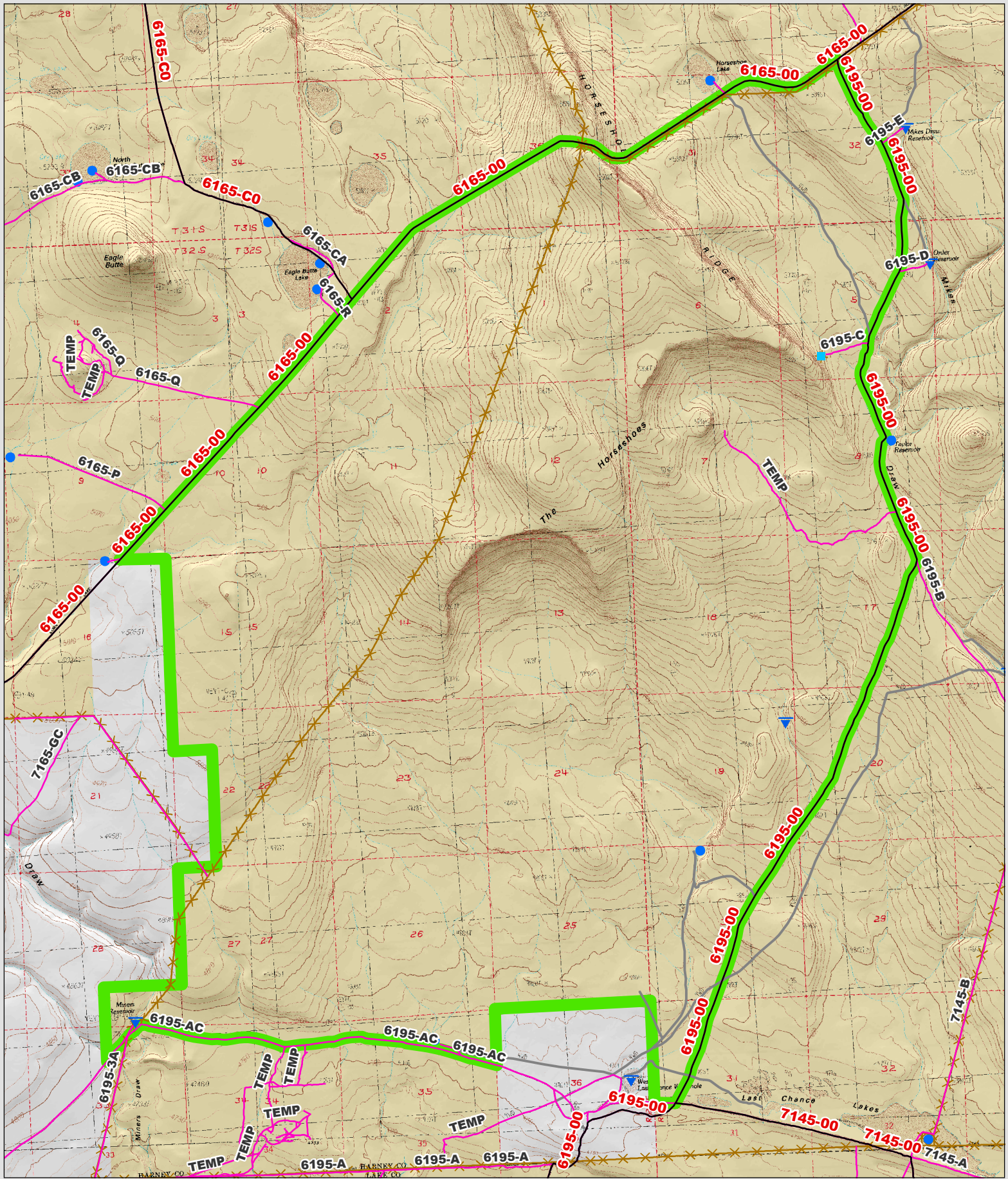
*This form documents information that constitutes an inventory finding on wilderness characteristics. It does not represent a formal land use allocation or a final agency decision subject to administrative remedies under 43 CFR parts either 4 or 1610.5-2.*



 Wilderness Character Inventory Unit



 No warranty is made by the Bureau of Land Management as to the accuracy, reliability, or completeness of these data for individual or aggregate use with other data. Original data were compiled from various sources. This information may not meet National Map Accuracy Standards. This product was developed through digital means and may be updated without notification.



Wilderness Character Inventory Unit	<b>Roads/Trails</b>	<b>Pipelines and Ditches</b>	<b>Water Developments</b>	1	0.5	0	1 Miles
<b>Ownership</b>	Motorized Routes	Ditch	Dam	Water Tank			
Bureau of Land Management	Highways	Water Pipeline	Reservoir	Waterhole			
U.S. Forest Service	Reclaiming Routes	Guzzler	Spring Development	Well - Water	<p>No warranty is made by the Bureau of Land Management as to the accuracy, reliability, or completeness of these data for individual or aggregate use with other data. Original data were compiled from various sources. This information may not meet National Map Accuracy Standards. This product was developed through digital means and may be updated without notification.</p>		
Private/Unknown	Interim Routes	Fences	Trough	Water Diversion			