

Year: 2018

Inventory Unit Number/Name: OR-015-135/ Guano Lake

**FORM 1**

**DOCUMENTATION OF BLM WILDERNESS INVENTORY FINDINGS ON RECORD**

**1. Is there existing BLM wilderness inventory information on all or part of this area?**

No \_\_\_\_\_ Yes  X  (if more than one unit is within the area, list the names/numbers of those units):

a) **Inventory Source:** Wilderness Inventory – Final Intensive Inventory Decisions; USDI BLM - Oregon and Washington, November 1980.

b) **Inventory Unit Number(s)/Name(s):** 1-135/ Guano Lake

c) **Map Name(s)/Number(s):** Intensive Wilderness Inventory - Final Decisions; USDI BLM - Oregon, November 1980.

d) **BLM District(s)/Field Office(s):** Lakeview District, Lakeview Resource Area.

**2. BLM Inventory Findings on Record:**

Existing inventory information regarding wilderness characteristics (if more than one BLM inventory unit is associated with the area, list each unit and answer each question individually for each inventory unit):

Unit #	Size (historic acres)	Natural Condition? Y/N	Outstanding Solitude? Y/N	Outstanding Primitive & Unconfined Recreation? Y/N	Supplemental Values? Y/N
1-135	11,680	N	N	N	N
1-135*	15,035	Y	N	N	N/A

\*The inventory of this unit was updated in 2012. However, due to a State Office-sponsored Wilderness Inventory Consistency Evaluation and subsequent guidance, the 2012 inventory analysis and findings are being replaced by this current 2018 inventory review. Documentation of the 2012 inventory can be found in the wilderness inventory project record.

*Summarize any known primary reasons for prior inventory findings listed in this table:*

In 1980, historic Unit 1-135 was described as a dry lakebed. The northeastern portion of the unit had some low hills. Guano Lake in the western portion of the unit was an ephemeral lake approximately four miles long and one-half mile wide. The vegetative cover was sagebrush. Internal roads had a major impact in the northeast. In the western portion of the unit, there were five and a half miles of “ways” and a well. The “way” appeared to be unobtrusive due to method of construction, design, and regrowth of vegetation. The well had very minimal impacts due to its small size. Approximately 50 percent of the unit had been affected by the works of man. The remaining portion of the unit appeared in a generally natural condition. The unit did not offer outstanding opportunities for solitude. The generally flat terrain, low vegetative cover and small size left one exposed to others in the unit. The unit did not contain secluded spots where one could experience isolation. The large, flat expanses of the unit did not provide any suitable opportunities to engage in primitive forms of recreation. Some potential for archaeological values was noted, though none had yet been documented.

## FORM 2

### DOCUMENTATION OF CURRENT WILDERNESS INVENTORY CONDITIONS

**Unit Number/Name:** OR-015-135 / Guano Lake

**(1) Is the unit of sufficient size?** Yes  No

Between 2007 and 2016, BLM staff conducted field inventory in the area as part of a process to update its road and wilderness inventories and to gather additional information to supplement ONDA’s wilderness information. This fieldwork included photo documentation of the boundary and interior routes and a re-evaluation of wilderness characteristics for this area. Using both ONDA and BLM photos, field logs, and staff field knowledge, the BLM completed route analysis within the area in 2017.

The BLM determined that the inventory unit is bounded by BLM roads 6106-B0 and private lands to the north; 6106-00 to the west; private and State or Oregon lands to the south; and 6176-00, BLM interim numbered road 6106-BE, and private lands to the east. Due to changes in boundary determinations (roads) and cut-outs of unnatural features (water tank, well, pipeline, and troughs), less than 1 acre was removed from the unit.

Thus, based on these boundary and road determinations, the BLM found the Guano Lake inventory unit to exceed the minimum size criteria at 15,050 acres of BLM-administered lands.

Additional background on the process the BLM followed during this evaluation is contained in the document, *Wilderness Inventory Maintenance Process for the Lakeview Resource Area, BLM* and in the *Route Analysis Forms*. Both documents can be found in the wilderness inventory file.

## DESCRIPTION OF CURRENT CONDITIONS:

This unit is located approximately 19 miles east of Adel, Oregon. It is approximately 8 miles long by 3 miles wide. Topographically, the unit is comprised entirely of Guano Valley/Guano Lake, an extremely flat seasonally wet/dry lakebed consisting of low-growing grasses and sagebrush. Overall, the unit ranges in elevation from 5,186 to 5,290 feet.

(2) **Is the unit in a natural condition?** Yes  No  N/A

In 1980, historic Unit 1-135 contained internal roads, which had a major impact in the northeast. In the western portion of the unit, there were five and a half miles of “ways” and a well. The “way” appeared to be unobtrusive due to method of construction, design, and regrowth of vegetation. The well had very minimal impacts due to its small size. Approximately 50 percent of the unit had been affected by the works of man. The remaining portion of the unit appeared in a generally natural condition.

The unit currently contains the following man-made developments/disturbances: 459 acres of chemical treatments, less than half an acre of rehabbed mineral pits, 1.5 miles of fence, 13 miles of motorized routes, 6.5 miles of reclaiming routes, and 5 waterholes.

Presently, almost 4 decades after the original inventory, these developments are weathered and grown over with herbaceous grasses and sagebrush. As a result, developments now fade into the background of the unit and are largely only noticeable at a close distance (1/4<sup>th</sup> mile or less) and are thus substantially unnoticeable from further distances. Furthermore, many of the disturbances are located near the perimeter of the unit and, as such, have a small area of influence

Based on a review of all the available information including photos, staff knowledge, and field review, the BLM concluded that the unit appears in a natural condition where the imprints of man are substantially unnoticeable.

(3) **Does the unit** (or the remainder of the unit if a portion has been excluded due to unnaturalness and the remainder is of sufficient size) **have outstanding opportunities for solitude?** Yes  No  N/A

In 1980, historic Unit 1-135 was found to lack outstanding opportunities for solitude. The generally flat terrain, low vegetative cover and small size left one exposed to others in the unit. The unit did not contain secluded spots where one could experience isolation.

The BLM acknowledges that there may be limited opportunities for solitude within the Guano Lake inventory unit. Topographically, the unit is comprised entirely of Guano Valley/Guano Lake, an extremely flat seasonally wet/dry lakebed consisting of low-growing grasses and sagebrush. Overall, the unit ranges in elevation from 5,186 to 5,290 feet. These opportunities are less than outstanding as the area’s characteristic landscape lacks vegetative screening and existing topographic screening is insufficient to effectively allow those recreating in the area to avoid the sights and sounds of others.

Thus, for the reasons specified above and based on a review of all the available information including (BLM and citizen provided) photos, staff knowledge, and field review, the BLM concluded the Guano Lake inventory unit does not possess outstanding opportunities for solitude.

**(4) Does the unit** (or the remainder of the unit if a portion has been excluded due to unnaturalness and the remainder is of sufficient size) **have outstanding opportunities for primitive and unconfined recreation?** Yes \_\_\_\_\_ No  X  N/A \_\_\_\_\_

In 1980, historic Unit 1-135 was found to lack outstanding opportunities for primitive forms of recreation as the large, flat expanses of the unit did not provide any suitable options to engage users.

The BLM finds the unit offers limited opportunities for hiking, horseback riding, backpacking, camping, wildlife observation, exploration, scenery, photography, stargazing, trapping, and hunting. However, the BLM determined that the unit does not possess outstanding opportunities for primitive and unconfined recreation through either the diversity of recreational activities possible in the area or by the outstanding quality of one opportunity relative to opportunities found within the Lakeview Resource Area.

**(5) Does the unit have supplemental values?** Yes \_\_\_\_\_ No \_\_\_\_\_ N/A  X

Supplemental values were not evaluated as the unit was determined to lack both outstanding opportunities for solitude and or primitive and unconfined recreation, and therefore does not meet the minimum wilderness criteria.

**Summary of Findings and Conclusion**

**Unit Number/Name:** OR-015-135/ Guano Lake

**Summary Results of Analysis:**

- 1. Does the area meet the size requirements?        X   Yes      No
- 2. Does the area appear to be natural?              X   Yes      No
- 3. Does the area offer outstanding opportunities for solitude or a primitive and unconfined type of recreation?           Yes   X   No      NA
- 4. Does the area have supplemental values?           Yes      No   X   NA

**Conclusion (Check One):**

     The area- or a portion of the area- has wilderness character:  
*(items 1, 2 and 3 must be checked "yes").*

  X   The area does not have wilderness character: *(any of items 1, 2 and 3 are checked "no").*

**Prepared by (Member Names and Titles):**


  
Chris Bishop: Outdoor Recreation Planner

10/18/2018  
Date

  
Jami Ludwig: Assistant Field Manager

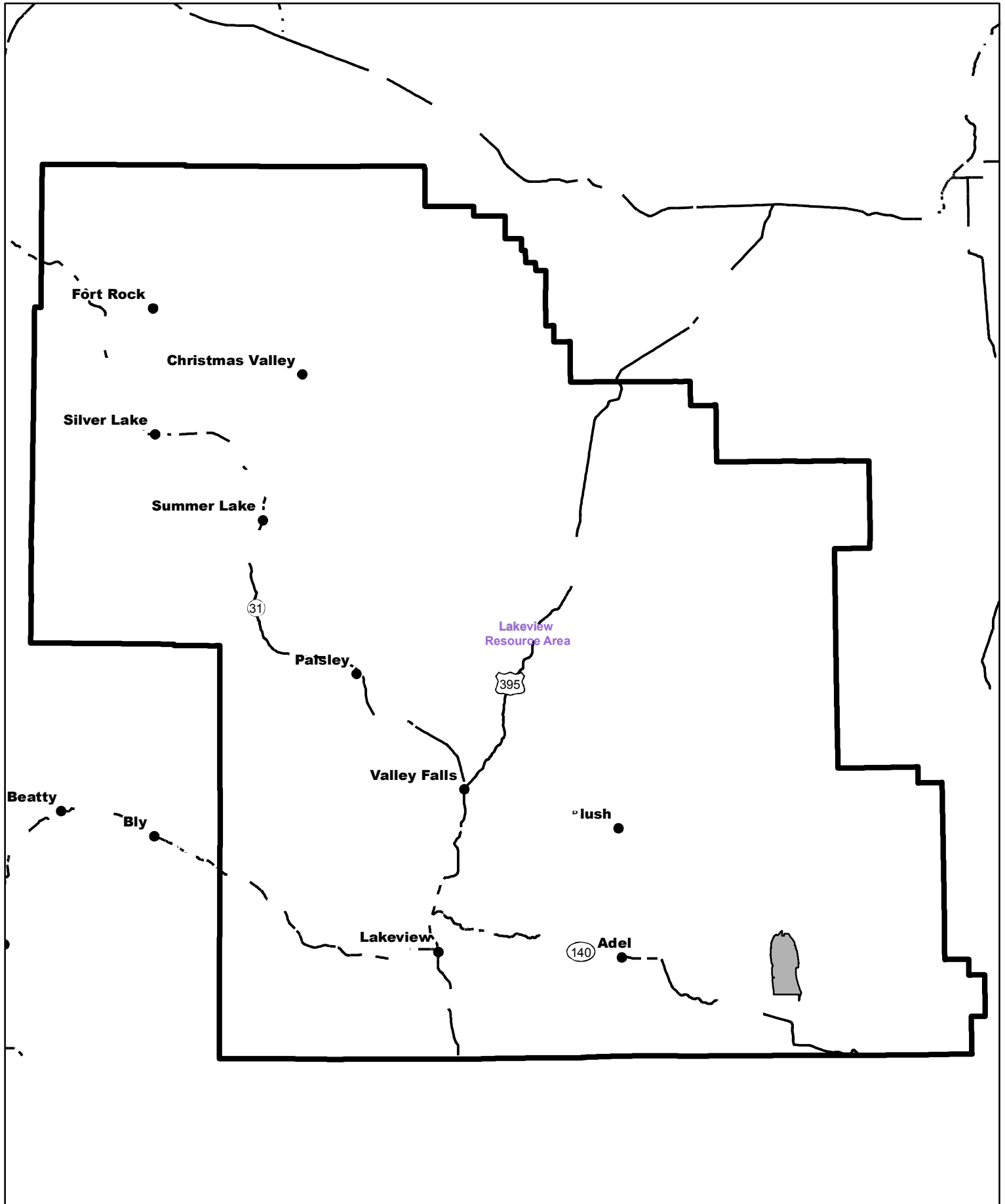
10/18/18  
Date

**Approved by:**

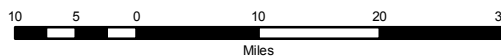
  
**J. Todd Forbes**  
Field Manager

10/18/18  
Date

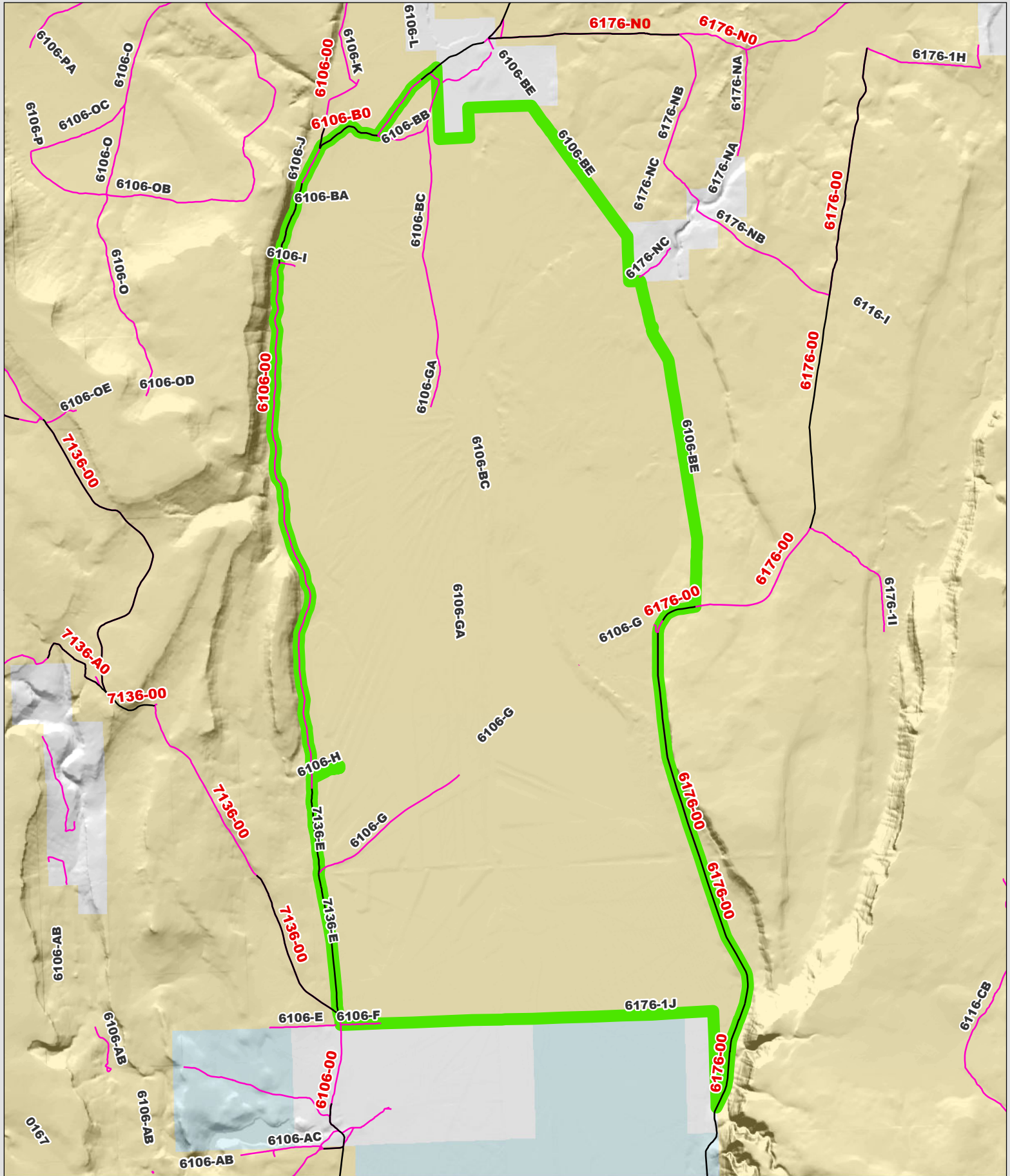
*This form documents information that constitutes an inventory finding on wilderness characteristics. It does not represent a formal land use allocation or a final agency decision subject to administrative remedies under 43 CFR parts either 4 or 1610.5-2.*



Wilderness Character Inventory Unit



No warranty is made by the Bureau of Land Management as to the accuracy, reliability, or completeness of these data for individual or aggregate use with other data. Original data were compiled from various sources. This information may not meet National Map Accuracy Standards. This product was developed through digital means and may be updated without notification.



**Wilderness Character Inventory Unit**

**Ownership**

- Bureau of Land Management
- U.S. Forest Service
- State
- Private/Unknown

**Roads/Trails**

- Motorized Routes
- Highways
- Reclaiming Routes
- Interim Routes

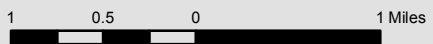
**Pipelines and Ditches**

- Ditch
- Water Pipeline
- Guzzler
- Fences

**Water Developments**

- Dam
- Reservoir
- Spring Development
- Trough
- Water Diversion

- Water Tank
- Waterhole
- Well - Water



No warranty is made by the Bureau of Land Management as to the accuracy, reliability, or completeness of these data for individual or aggregate use with other data. Original data were compiled from various sources. This information may not meet National Map Accuracy Standards. This product was developed through digital means and may be updated without notification.