

Year: 2018

Inventory Unit Number/Name: OR-015-040/ Egli Rim

**FORM 1**

**DOCUMENTATION OF BLM WILDERNESS INVENTORY  
FINDINGS ON RECORD**

**1. Is there existing BLM wilderness inventory information on all or part of this area?**

No        Yes   X   (if more than one unit is within the area, list the names/numbers of those units):

a) **Inventory Source(s):** BLM Wilderness Inventory files for Pacific Power and Light Company (PP&L) Transmission Line: PP&L Roadless Area Inventory Files (1977).

b) **Inventory Unit Number(s)/ Name(s):** 1-40 and PP&L #OR-010-04-21/ Egli Rim

c) **Map Name(s)/Number(s):** Final Decision - Initial Wilderness Inventory: Public Lands and Islands Which Do Not Have Wilderness Characteristics and Units To Be Intensively Inventoried; USDI BLM - Oregon, August 1979.

d) **BLM District(s)/Field Office(s):** Lakeview District, Lakeview Resource Area.

**2. BLM Inventory Findings on Record:**

Existing inventory information regarding wilderness characteristics (if more than one BLM inventory unit is associated with the area, list each unit and answer each question individually for each inventory unit):

<b>Unit#</b>	<b>Size (historic acres)</b>	<b>Natural Condition? Y/N</b>	<b>Outstanding Solitude? Y/N</b>	<b>Outstanding Primitive &amp; Unconfined Recreation? Y/N</b>	<b>Supplemental Values? Y/N</b>
1-40; 4-21	6,400	Y	N	N	N
1-40; 4-21*	6,307	Y	N	N	N/A

\* The inventory of this unit was updated in 2010. However, due to a State Office-sponsored Wilderness Inventory Consistency Evaluation and subsequent guidance, the 2010 inventory analysis and findings are being replaced by this current 2018 inventory review. Documentation of the 2010 inventory can be found in the wilderness inventory project record.

*Summarize any known primary reasons for prior inventory findings listed in this table:*

In 1977, the Unit 1-40 was described as a large, high, fault scarp on the west and south boundaries, with a parallel row of hills behind rim, a few shallow draws, and 20 acre Squaw Lake in the southwest corner of the area. Vegetation was described as desert shrubs with bands of junipers on along rims. The previous inventory found this unit to be in a natural condition with only minor impacts of man present within the unit (reservoirs, trails, and a seeding in the north). Outside impacts were also noted including State Highway 31 and distant farm activities. No outstanding opportunities for solitude were found within the unit. The previous inventory also found that although there were opportunities for hunting, fishing (Squaw Lake), hiking, and horseback riding, and camping, none were outstanding. Supplemental values were not evaluated for the unit. Ultimately, this inventory unit was found lack wilderness values and was dropped from the wilderness review process in 1978.

**FORM 2**

**DOCUMENTATION OF CURRENT WILDERNESS INVENTORY  
CONDITIONS**

**Unit Number/Name:** OR-015-040/ Egli Rim

**(1) Is the unit of sufficient size?** Yes  No

Between 2008 and 2016, BLM staff conducted field inventory in the area as part of a process to update its road and wilderness inventories and to gather additional information to supplement ONDA's wilderness information. This fieldwork included photo documentation of the boundary and interior routes and a re-evaluation of wilderness characteristics for this area. Using both ONDA and BLM photos, field logs, and staff field knowledge, the BLM completed route analysis within the area in 2017.

The BLM determined that the inventory unit is bounded by private lands and two right-of-ways for State Highway 31 and a residential power line on the west; County Road 5-14F right-of-way on the north; BLM Road 7134-00 on the east; and a PacifiCorp 500-KV power line right-of-way on the south. In addition, BLM Interim numbered road 7134-G0 was cherry stemmed. Due to changes in boundary determinations (road and power line rights-of-ways buffer corrections), approximately 114 acres were removed from the unit.

Thus, based on these boundary and road determinations, the BLM found the Egli Rim inventory unit to exceed the minimum size criteria at approximately 6,194 acres of BLM-administered lands.

Additional background on the process that the BLM followed during this evaluation is contained in the document, *Wilderness Inventory Maintenance Process for the Lakeview Resource Area, BLM* and in the *Route Analysis Forms*. Both documents can be found in the wilderness inventory file.

## DESCRIPTION OF CURRENT CONDITIONS:

The unit is located approximately 11 miles southwest of Christmas Valley, Oregon. The unit is approximately 6.5 miles long by 2 miles wide with one private inholding (containing Squaw Lake) in the southeast corner. Topographically, the unit is dominated by the geographic feature of Egli Rim, a large, 600 – 1,000 ft. high, 7.5 mile long, fault scarp on the west and south boundaries that slopes to the north and east. In the southern third of the unit, a 2.5 mile spine/rim, that includes Squaw Butte (5,698 ft.) and two unnamed peaks (5614 ft.; 5,310 ft.), dominates the top of the units plateau. Approximately 1,400 acres of the unit is covered in moderate to high-density western juniper stands, spread across the southern half of the unit. Much of the juniper along southern rims and the interior spine has old-growth characteristics. The remaining vegetation is scattered juniper, sagebrush, rabbit brush, and grass. Additionally, a wildfire in 1968 1984 burned approximately 580 acres along the northern tip of the unit.

**(2) Is the unit in a natural condition?** Yes  No  N/A

The 1977 inventory found this unit to be in a natural condition with only minor impacts of man present within the unit (reservoirs, trails, and a seeding in the north). Outside impacts included State Highway 31 and distant farm activities.

The unit currently contains the following man-made developments/disturbances: 580 acres of wildfire, 426 acres of seeding, 4.25 miles of fence lines, 5.5 miles of motorized routes, 1.25 miles of reclaiming routes, 1 mile of cat line, 4 reservoirs, 2 waterholes, and 1 wildlife guzzler.

Presently, almost 4 decades after the original inventory, these developments are weathered and grown over with herbaceous grasses, sagebrush, and juniper. As a result, developments now fade into the background of the unit and are largely only noticeable at a close distance (1/4<sup>th</sup> mile or less) and are thus substantially unnoticeable from further distances. The topography and vegetation of the area also plays a large role in screening disturbances and man-made developments. Furthermore, many of the disturbances are located near the perimeter of the unit and, as such, have a small area of influence. Additionally, areas that were seeded or allowed to revegetate naturally after wildfire and prescribed burns have been invaded by juniper, rabbit bush, sagebrush, and grasses and have returned to a natural, post fire, appearing condition.

Based on a review of all the available information including photos, staff knowledge, and field review, the BLM concluded that the unit appears in a natural condition where the imprints of man are substantially unnoticeable.

**(3) Does the unit** (or the remainder of the unit if a portion has been excluded due to unnaturalness and the remainder is of sufficient size) **have outstanding opportunities for solitude?** Yes  No  N/A

The 1977 inventory determined the unit lacked outstanding opportunities for solitude.

The BLM determined that there are several outstanding opportunities for solitude across the unit due to topographic and vegetative screening. Topographically, the unit is dominated by the geographic feature of Egli Rim, a large, 600 – 1,000 ft. high, 7.5 mile long, fault scarp on the west and south boundaries that slopes to the north and east. In the southern third of the unit, a 2.5 mile spine/rim, that includes Squaw Butte (5,698 ft.) and two unnamed peaks (5614 ft.; 5,310 ft.), dominates the top of the units plateau. Vegetatively, western juniper stands have greatly expanded in height, width, and density. Approximately 1,400 acres of the unit is covered in moderate to high-density western juniper stands, spread across the southern half of the unit. Much of the juniper along southern rims and the interior spine has old-growth characteristics. Due to the above-described compartmentalized topography and vegetative screening throughout the unit, one would easily be able to avoid the sights and sounds of others.

Thus, for the reasons specified above and based on a review of all the available information including (BLM and citizen provided) photos, staff knowledge, and field review, the BLM concluded the Egli Rim inventory unit possesses outstanding opportunities for solitude.

**(4) Does the unit** (or the remainder of the unit if a portion has been excluded due to unnaturalness and the remainder is of sufficient size) **have outstanding opportunities for primitive and unconfined recreation?** Yes  No  N/A

The 1977 inventory found that although there were opportunities for hunting, fishing (Squaw Lake), hiking, and horseback riding, and camping, none were outstanding.

The BLM finds the combination and diversity of hiking, horseback riding, backpacking, camping, wildlife observation, exploration, scenery, photography, stargazing, trapping, and hunting are exceptional. The BLM determined that options for hiking along Egli Rim and Squaw Butte represent unique opportunities for primitive and unconfined recreation.

**5) Does the unit have supplemental values?** Yes  No  N/A

The BLM found the unit to possess archaeological and geological values as well as the presence of pronghorn antelope, mule deer, golden eagle, prairie falcon, and sage-grouse habitat.

**Summary of Findings and Conclusion**

**Unit Number and Name:** OR-015-040/ Egli Rim

**Summary Results of Analysis:**

- 1. Does the area meet the size requirements?        X   Yes         No
- 2. Does the area appear to be natural?              X   Yes         No
- 3. Does the area offer outstanding opportunities for solitude or a primitive and unconfined type of recreation?              X   Yes         No         NA
- 4. Does the area have supplemental values?        X   Yes         No         NA

**Conclusion (Check One):**

- X   The area- or a portion of the area- has wilderness character: *(items 1, 2 and 3 must be checked "yes")*.
- The area does not have wilderness character: *(any of items 1, 2 and 3 are checked "no")*.

**Prepared by (Member Names and Titles):**

  
Chris Bishop: Outdoor Recreation Planner

  6/4/18    
Date

  
Jami Ludwig: Assistant Field Manager

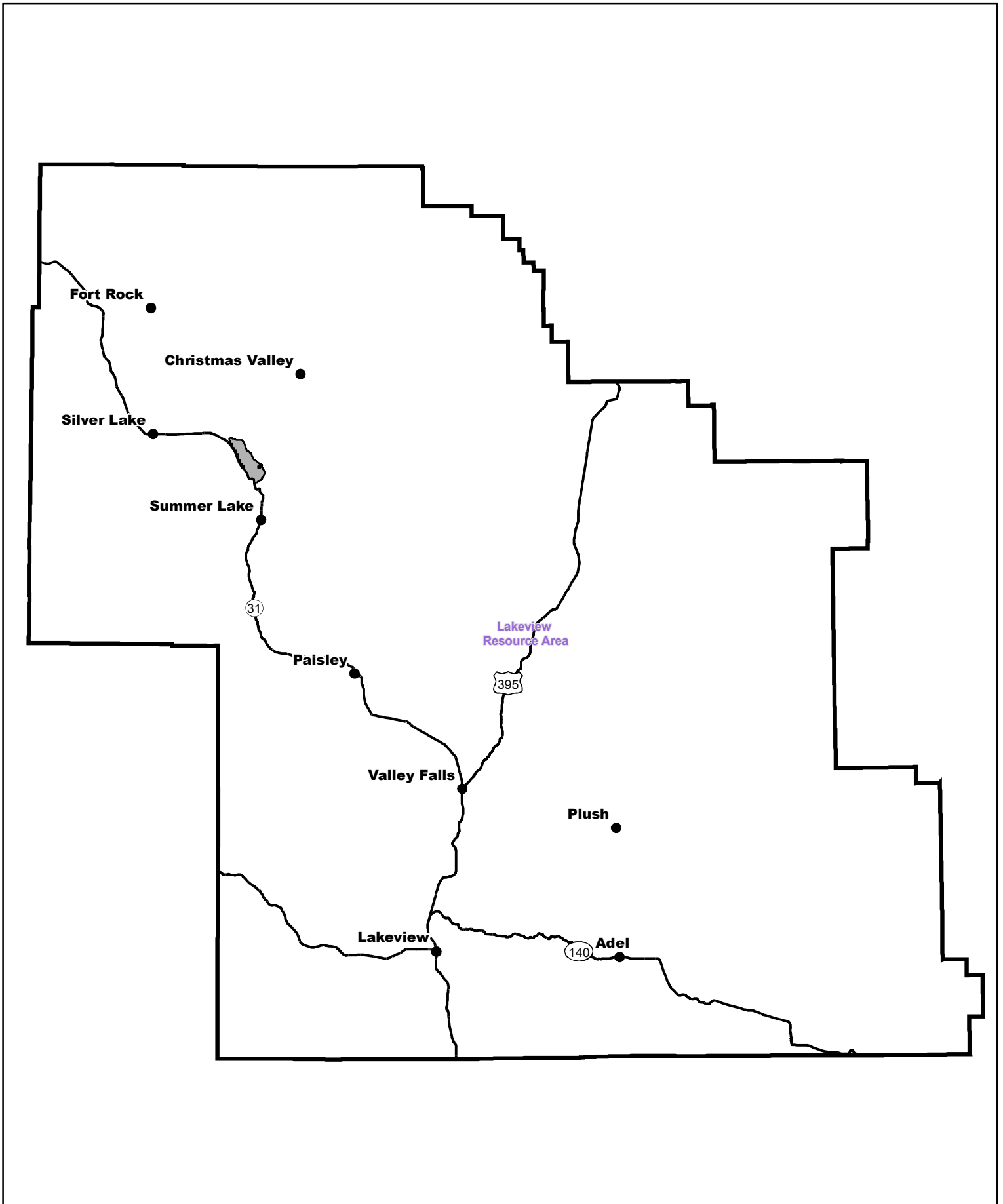
  6/4/18    
Date


**Approved by:**

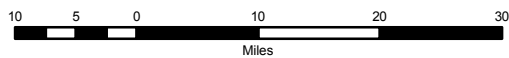
  
**J. Todd Forbes**  
**Field Manager**


  6/4/18    
Date

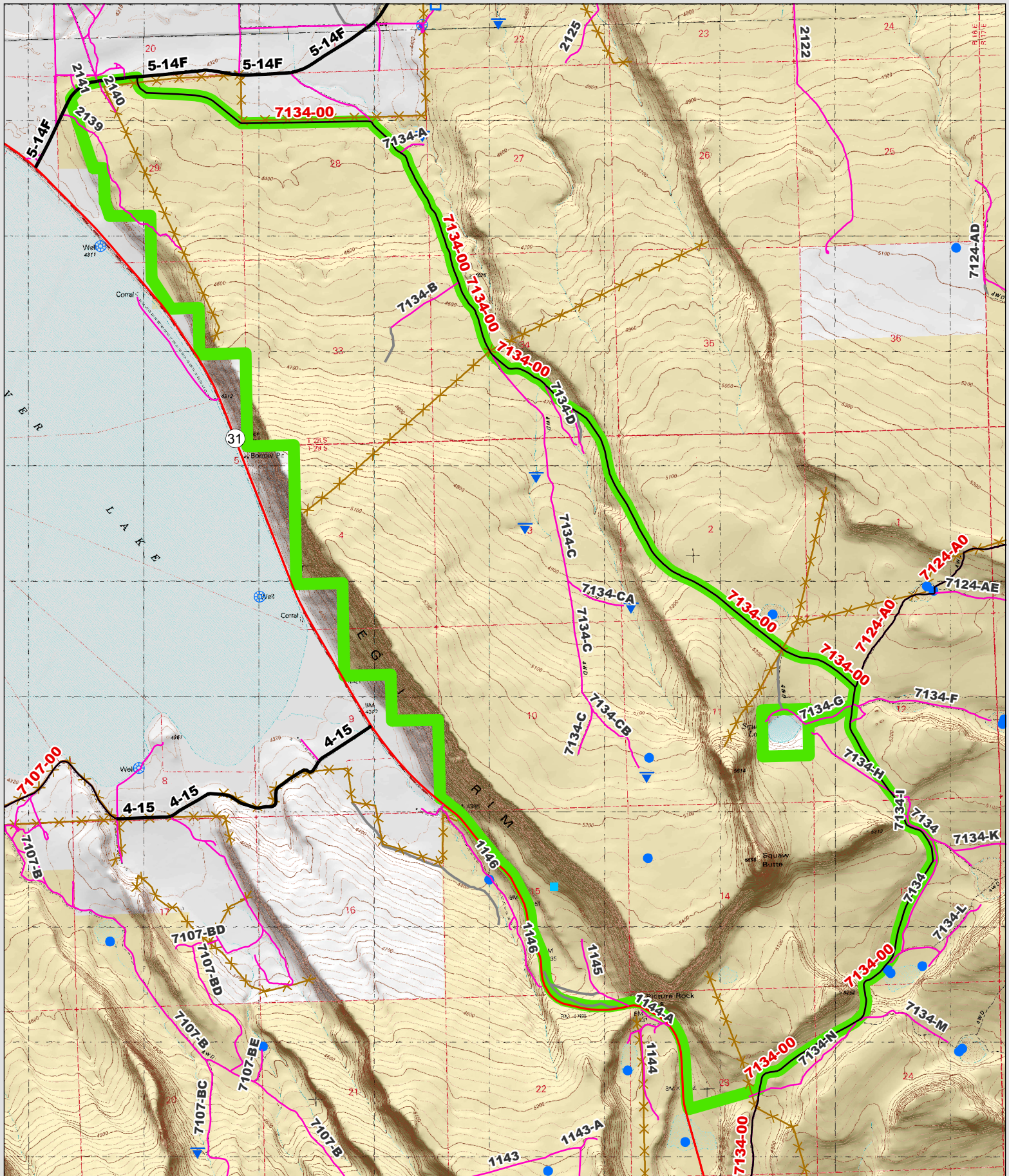
*This form documents information that constitutes an inventory finding on wilderness characteristics. It does not represent a formal land use allocation or a final agency decision subject to administrative remedies under 43 CFR parts either 4 or 1610.5-2.*



 Wilderness Character Inventory Unit



 No warranty is made by the Bureau of Land Management as to the accuracy, reliability, or completeness of these data for individual or aggregate use with other data. Original data were compiled from various sources. This information may not meet National Map Accuracy Standards. This product was developed through digital means and may be updated without notification.



**Wilderness Character Inventory Unit**

**Ownership**

- Bureau of Land Management
- U.S. Forest Service
- Private/Unknown

**Roads/Trails**

- Motorized Routes
- Highways
- Reclaiming Routes
- Interim Routes

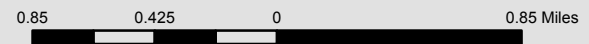
**Pipelines and Ditches**

- Ditch
- Water Pipeline
- Guzzler
- Fences

**Water Developments**

- Dam
- Reservoir
- Spring Development
- Trough
- Water Diversion

- Water Tank
- Waterhole
- Well - Water



No warranty is made by the Bureau of Land Management as to the accuracy, reliability, or completeness of these data for individual or aggregate use with other data. Original data were compiled from various sources. This information may not meet National Map Accuracy Standards. This product was developed through digital means and may be updated without notification.