

Year: 2018

Inventory Unit Number/Name: OR-015-206/ Diablo West

FORM 1

**DOCUMENTATION OF BLM WILDERNESS INVENTORY
FINDINGS ON RECORD**

1. Is there existing BLM wilderness inventory information on all or part of this area?

No Yes X (if more than one unit is within the area, list the names/numbers of those units):

a) Inventory Source:

- a. BLM Wilderness Inventory files for Pacific Power and Light Company (PP&L) Transmission Line: PP&L Roadless Area Inventory Files (1977).
- b. Wilderness – Proposed Initial Inventory: Roadless Areas and Islands Which Clearly Do Not Have Wilderness Characteristics; USDI BLM - Oregon and Washington, April 1979.
- c. Wilderness Review – Initial Inventory: Final Decision on Public Lands Obviously Lacking Wilderness Characteristics and Announcement of Public Lands to be Intensively Inventoried for Wilderness Characteristics; USDI BLM - Oregon and Washington, August 1979.
- d. Wilderness Review – Intensive Inventory: Final Decisions On 30 Selected Units in Southeast Oregon and Proposed Decisions On Other Intensively Inventoried Units; USDI BLM - Oregon and Washington, March 1980.
- e. Wilderness Inventory – Final Intensive Inventory Decisions; USDI BLM - Oregon and Washington, November 1980.

b) Inventory Unit Name(s)/Number(s): NA

c) Map Name(s)/Number(s):

- a. Proposed Initial Inventory: Roadless Areas and Islands Which Do Not Have Wilderness Characteristics; USDI BLM - Oregon, April 1979.
- b. Final Decision - Initial Wilderness Inventory: Public Lands and Islands Which Do Not Have Wilderness Characteristics and Units To Be Intensively Inventoried; USDI BLM - Oregon, August 1979.
- c. Intensive Wilderness Inventory: Final Decisions For 30 Selected Inventory Units and Proposed Decisions For Other Intensive Inventory Units; USDI BLM - Oregon, March 1980.

- d. Intensive Wilderness Inventory - Final Decisions; USDI BLM - Oregon, November 1980.

d) BLM District(s)/Field Office(s): Lakeview District, Lakeview Resource Area.

2. BLM Inventory Findings on Record

Existing inventory information regarding wilderness characteristics (*if more than one BLM inventory unit is associated with the area, list each unit/acreage and answer each question individually for each inventory unit*):

Unit#	Size (historic acres)	Natural Condition? Y/N	Outstanding Solitude? Y/N	Outstanding Primitive & Unconfined Recreation? Y/N	Supplemental Values? Y/N
1-206*	<5,000	Y	Y	N	N

* The inventory of this unit was updated in 2010. However, due to a State Office-sponsored Wilderness Inventory Consistency Evaluation and subsequent guidance, the 2010 inventory analysis and findings are being replaced by this current 2018 inventory review. Documentation of the 2010 inventory can be found in the wilderness inventory project record.

Summarize any known primary reasons for prior inventory findings listed in this table:

In 1979/1980, this unit was not evaluated during the inventory process, presumably because it did not meet the minimum size requirement.

FORM 2

DOCUMENTATION OF CURRENT WILDERNESS INVENTORY CONDITIONS

Unit Number/Name: OR-015-206/ Diablo West

(1) Is the unit of sufficient size? Yes X No _____

Between 2008 and 2016, BLM staff conducted field inventory in the area as part of a process to update its road and wilderness inventories and to gather additional information to supplement ONDA’s wilderness information. This fieldwork included photo documentation of the boundary and interior routes and a re-evaluation of wilderness characteristics for this area. Using both ONDA and BLM photos, field logs, and staff field knowledge, the BLM completed route analysis within the area in 2017.

The BLM determined that the inventory unit is bounded by BLM Road 6104-C0 on the north; right-of-ways for private lands access along BLM interim number road 2126-00, BLM

interim numbered road 6104-CA, and private lands to the west; a contiguous boundary with Diablo Mountain WSA (OR-1-58) and private lands to the east.

Thus, based on these boundary and road determinations, the BLM found the Diablo West inventory unit does not meet the minimum size criteria at approximately 2,522 acres of BLM-administered lands. However, it does meet one of the exceptions to the size criteria; namely, that it is contiguous with BLM's 113,120-acre Diablo Mountain WSA located to the east.

Additional background on the process that the BLM followed during this evaluation is contained in the document, *Wilderness Inventory Maintenance Process for the Lakeview Resource Area, BLM* and in the *Route Analysis Forms*. Both documents can be found in the wilderness inventory file.

DESCRIPTION OF CURRENT CONDITIONS:

This unit is located approximately 8 miles northeast of Summer Lake, Oregon. The unit is approximately 3 miles long by 2.5 miles wide. The unit is located on the northeastern corner of Summer Lake Basin. The unit ranges in elevation from 4,270 ft. to 4,380 feet. The terrain is mostly flat with areas of low-rolling sand dunes, which are populated by short and tall sagebrush that varies in density from sparse to thick.

(2) Is the unit in a natural condition? Yes No

In 1979/1980, this unit was not evaluated for naturalness during the inventory process, presumably because it did not meet the minimum size requirement.

The unit currently contains the following man-made developments/disturbances: 1 mile of motorized routes.

Presently, almost 4 decades after the original inventory, these developments are weathered and grown over with herbaceous grasses, and sagebrush. As a result, these developments fade into the background of the unit and are largely only noticeable at a close distance (1/4th mile or less) and are thus substantially unnoticeable from further distances. Furthermore, many of the disturbances are located near the perimeter of the unit and, as such, have a small area of influence.

Based on a review of all the available information including photos, staff knowledge, and field review, the BLM concluded, based on its own merits, that Diablo West unit appears in natural condition where the imprint of man are substantially unnoticeable. Furthermore, since the unit is now contiguous with the Diablo Mountain WSA, the Diablo West unit must be analyzed in the context of these now shared wilderness values. After considering wilderness values offered by both units, the BLM determined that the Diablo West unit and the WSA contribute mutually additive effects to the natural condition of both units as a whole. Thus, the area was found to be in a natural condition primarily affected by the forces of nature.

(3) Does the unit (or the remainder of the unit if a portion has been excluded due to unnaturalness and the remainder is of sufficient size) **have outstanding opportunities for solitude?** Yes X No _____ N/A _____

In 1979/1980, outstanding opportunities for solitude were not evaluated during the inventory process, presumably because it did not meet the minimum size requirement.

BLM's much larger Diablo Mountain WSA to the east was found in 1980 to provide outstanding opportunities for solitude, due its size and rugged terrain.

The BLM determined that the Diablo West inventory unit on its own merit, provides limited opportunities for solitude and ultimately lacks adequate size or screening to provide outstanding opportunities. The unit ranges in elevation from 4,270 ft. to 4,380 feet. The terrain is mostly flat with areas of low-rolling sand dunes, which are populated by short and tall sagebrush that varies in density from sparse to thick. However, opportunities would be enhanced by the additive effect of outstanding opportunities for solitude present within the 113,120-acre Diablo Mountain WSA to the east and must be analyzed in the context of these now shared wilderness values.

Thus, for the reasons specified above and based on a review of all the available information including (BLM and citizen provided) photos, staff knowledge, and field review, the BLM concluded that one would be able to avoid the sights and sounds of others within the inventory unit due to the contiguous values of the Diablo Mountain WSA.

(4) Does the unit (or the remainder of the unit if a portion has been excluded due to unnaturalness and the remainder is of sufficient size) **have outstanding opportunities for primitive and unconfined recreation?** Yes X No _____ N/A _____

In 1979/1980, outstanding opportunities for primitive and unconfined recreation were not evaluated during the inventory process, presumably because it did not meet the minimum size requirement.

BLM's much larger Diablo Mountain WSA to the east was found in 1980 to provide a less than outstanding opportunity for hiking and backpacking due to limited variety of terrain and lack of water. However, the BLM's 1991 Wilderness Study Report stated, "Opportunities for primitive and unconfined recreation are outstanding within the WSA. The diverse and broken terrain offers excellent opportunities for hiking and backpacking along the eastern half of the WSA in the draws and mountain area."

The BLM determined that the Diablo West inventory unit on its own merit, provides limited opportunities for primitive and unconfined recreation and ultimately lacks adequate size to provide outstanding opportunities. However, opportunities for recreation would be enhanced by the additive effect of outstanding primitive recreation opportunities present within the 113,120-acre Diablo Mountain WSA to the east and must be analyzed in the context of these now shared wilderness values.

Thus, for the reasons specified above and based on a review of all the available information including (BLM and citizen provided) photos, staff knowledge, and field review, the BLM concluded that outstanding opportunities for primitive and unconfined recreation are present within the Diablo West inventory unit due to the contiguous values of the Diablo Mountain WSA.

(5) Does the unit have supplemental values? Yes X No N/A

The BLM found the unit to possess archaeological and geological values as well as the presence of golden eagle habitat.

Summary of Findings and Conclusion

Unit Number and Name: OR-015-206/ Diablo West

Summary Results of Analysis:

- 1. Does the area meet the size requirements? X Yes No
- 2. Does the area appear to be natural? X Yes No
- 3. Does the area offer outstanding opportunities for solitude or a primitive and unconfined type of recreation? X Yes No NA
- 4. Does the area have supplemental values? X Yes No NA

Conclusion (Check One):

- X The area- or a portion of the area- has wilderness character: *(items 1, 2 and 3 must be checked "yes")*.
- The area does not have wilderness character: *(any of items 1, 2 and 3 are checked "no")*.

Prepared by (Member Names and Titles):


Chris Bishop: Outdoor Recreation Planner

 4/4/18
Date


Jami Ludwig: Assistant Field Manager

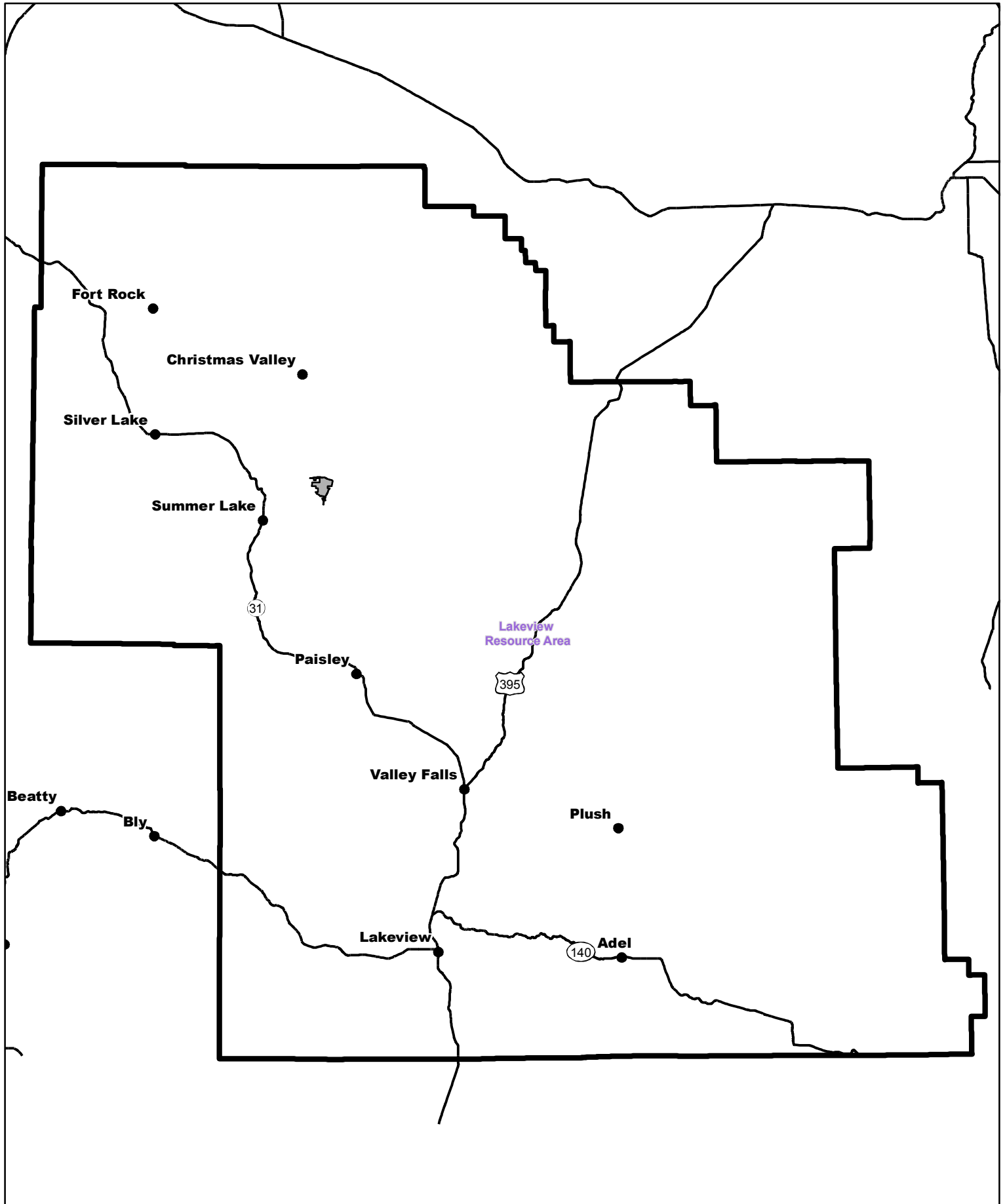
 6/4/18
Date


Approved by:

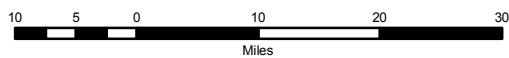

J. Todd Forbes
Field Manager


 6/4/18
Date

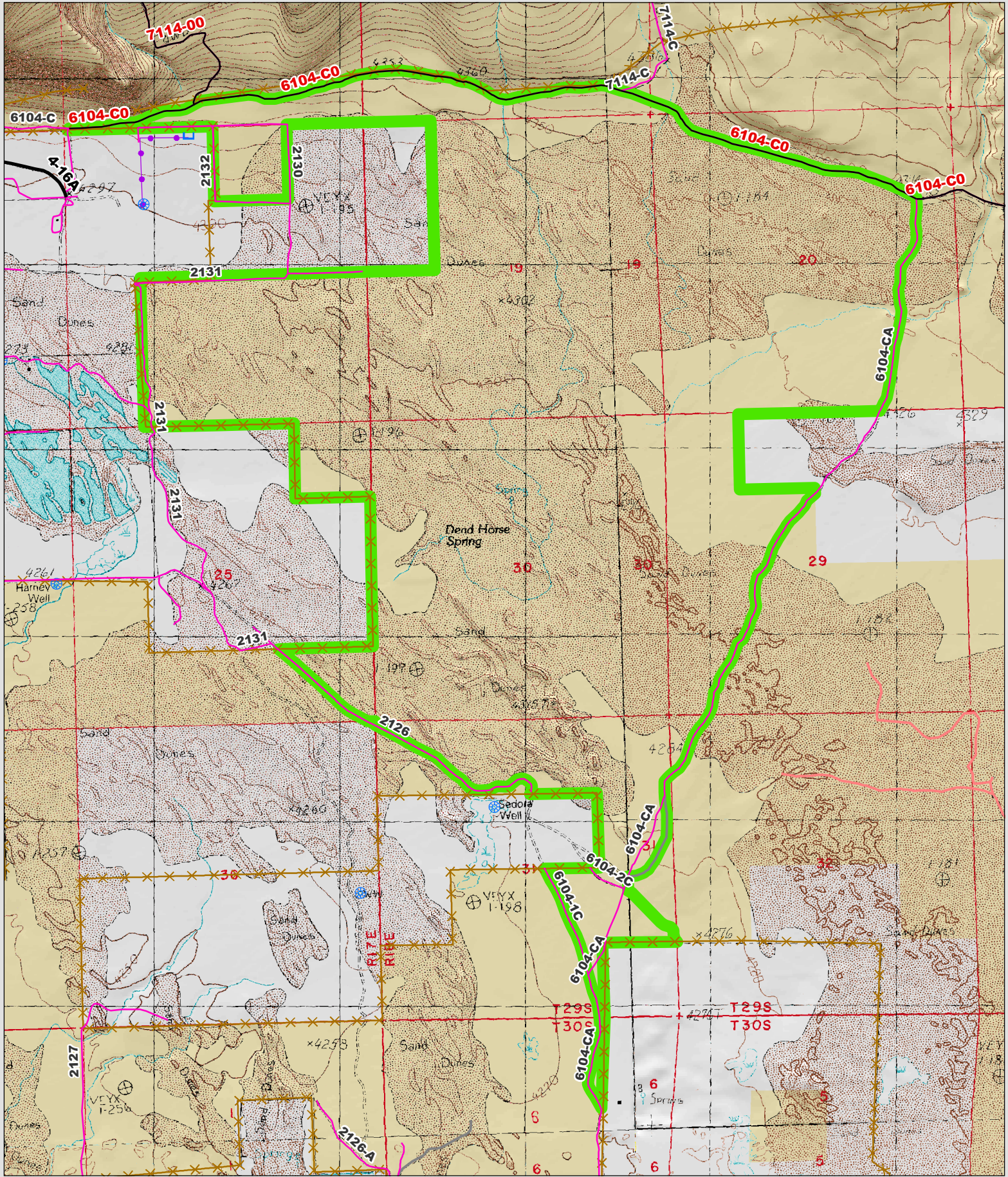
This form documents information that constitutes an inventory finding on wilderness characteristics. It does not represent a formal land use allocation or a final agency decision subject to administrative remedies under 43 CFR parts either 4 or 1610.5-2.



 Wilderness Character Inventory Unit



 No warranty is made by the Bureau of Land Management as to the accuracy, reliability, or completeness of these data for individual or aggregate use with other data. Original data were compiled from various sources. This information may not meet National Map Accuracy Standards. This product was developed through digital means and may be updated without notification.



Wilderness Character Inventory Unit

Ownership

- Bureau of Land Management
- U.S. Forest Service
- State
- Private/Unknown

Roads/Trails

- Motorized Routes
- Highways
- Reclaiming Routes
- Interim Routes

Pipelines and Ditches

- Ditch
- Water Pipeline
- Guzzler
- Fences

Water Developments

- Dam
- Reservoir
- Spring Development
- Trough
- Water Diversion

- Water Tank
- Waterhole
- Well - Water

0.5 0.25 0 0.5 Miles

N
W — E
S

No warranty is made by the Bureau of Land Management as to the accuracy, reliability, or completeness of these data for individual or aggregate use with other data. Original data were compiled from various sources. This information may not meet National Map Accuracy Standards. This product was developed through digital means and may be updated without notification.