

Year: 2018

Inventory Unit Number/Name: OR-015-096A/ Coglan Buttes East

FORM 1

DOCUMENTATION OF BLM WILDERNESS INVENTORY FINDINGS ON RECORD

1. Is there existing BLM wilderness inventory information on all or part of this area?

No _____ Yes X (if more than one unit is within the area, list the names/numbers of those units):

a) **Inventory Source:** Wilderness Inventory – Final Intensive Inventory Decisions; USDI BLM - Oregon and Washington, November 1980.

b) **Inventory Unit Number(s)/Name(s):** 1-96/ Coglan Buttes

c) **Map Name(s)/Number(s):** Intensive Wilderness Inventory - Final Decisions; USDI BLM - Oregon, November 1980.

d) **BLM District(s)/Field Office(s):** Lakeview District, Lakeview Resource Area.

2. BLM Inventory Findings on Record:

Existing inventory information regarding wilderness characteristics (if more than one BLM inventory unit is associated with the area, list each unit and answer each question individually for each inventory unit):

Unit #	Size (historic acres)	Natural Condition? Y/N	Outstanding Solitude? Y/N	Outstanding Primitive & Unconfined Recreation? Y/N	Supplemental Values? Y/N
1-96	32,000	N	N	N	Y
1-96A*	11,029	Y	N	N	N/A

*The inventory of this unit was updated in 2012. However, due to a State Office-sponsored Wilderness Inventory Consistency Evaluation and subsequent guidance, the 2012 inventory analysis and findings are being replaced by this current 2018 inventory review. Documentation of the 2012 inventory can be found in the wilderness inventory project record.

Summarize any known primary reasons for prior inventory findings listed in this table:

In 1980, the unit included the steep cliffs of Coglan Buttes on the west border and broad, low-angle slopes descending toward Abert Lake to the east of the cliffs. The majority of the unit was broad, sagebrush-covered flats with very little topographic relief. The unit

contained 23 miles of “ways,” some of which had historical blading. Shores Waterhole was a substantial impact on about 2,560 acres of the unit due its large size. There were a total of five reservoirs, several watering stations, a guzzler, and a radio repeater site located in the unit. These disturbances were dispersed throughout the unit and collectively had a substantial impact on the unit's natural character. The unit was found to have minimal potential for solitude due to the lack of vegetative and topographic screening. It was noted that the cliffs of Coglan Buttes offered some isolated sites where solitude and primitive and unconfined recreation could be achieved, but overall the unit did not offer outstanding opportunities. Possible supplemental values were noted as archaeological and geological values, though none were specifically identified at the time.

FORM 2

**DOCUMENTATION OF CURRENT WILDERNESS INVENTORY
CONDITIONS**

Unit Number/Name: OR-015-096A/ Coglan Buttes East

(1) Is the unit of sufficient size? Yes No

In 2005, the BLM received a citizen proposal from the Oregon Natural Desert Association (ONDA) for the 55,268-acre Coglan Buttes proposed Wilderness Study Area (WSA). ONDA included in their information a narrative report, maps, photos, photo and route logs, and GIS data with their route and photo point data. All of these materials were considered during the BLM’s wilderness inventory process for this area. The photos submitted by ONDA were taken in July of 2004 and June of 2005. They identified the area as having no interior routes, which meet the BLM’s wilderness inventory definition of a road (p. 39 of ONDA 2005).

Between 2008 and 2016, BLM staff conducted field inventory in the area as part of a process to update its road and wilderness inventories and to gather additional information to supplement ONDA’s wilderness information. This fieldwork included photo documentation of the boundary and interior routes and a re-evaluation of wilderness characteristics for this area. Using both ONDA and BLM photos, field logs, and staff field knowledge, the BLM completed route analysis within the area in 2017.

The BLM determined that several of the routes ONDA identified as “ways” are boundary roads. The BLM found the Coglan Buttes proposed WSA is not one large roadless unit, but is comprised of several smaller inventory units; which must be evaluated individually. This evaluation focuses on the Coglan Buttes East unit (OR-015-096A).

The BLM determined that the inventory unit is bounded by BLM Road 6124-00 (Sand Hollow) to the north; 6124-A0 (Coglan Butte) to the west; and 6154-00 (Big Basin) to the south and east. The boundary of this unit was changed to remove approximately 2 acres of disturbances including a pipeline and troughs along the eastern boundary.

Thus, based on these boundary and road determinations, the BLM found the Coglan Buttes East inventory unit to exceed the minimum size criteria at approximately 11,027 acres of BLM-administered lands.

Additional background on the process the BLM followed during this evaluation is contained in the document, *Wilderness Inventory Maintenance Process for the Lakeview Resource Area, BLM* and in the *Route Analysis Forms*. Both documents can be found in the wilderness inventory file.

DESCRIPTION OF CURRENT CONDITIONS:

This unit is located approximately 9 miles east of Plush, Oregon. It is approximately 6 miles long by 3 miles wide. Topographically, the majority of the unit is a flat (slightly sloping to the east) with gently rolling hills with a few minor lakebed depressions (5-20 ft. deep) including Keen Waterhole. Additionally, the unit contains a minor ridge (3 miles long, 40 ft. high) in the northwest corner and a few shallow drainages (5-35 ft. deep) in the southern third of the unit. Overall, the unit ranges in elevation from 5,045 to 5,375 feet. Vegetatively, the unit consists of sagebrush, rabbit brush, and grass.

(2) Is the unit in a natural condition? Yes No N/A

In 1980, historic Unit 1-96 contained 23 miles of “ways,” some of which had historical blading. Shores Waterhole was a substantial impact on about 2,560 acres of the unit due its large size. There were a total of five reservoirs, several watering stations, a guzzler, and a radio repeater site located in the unit. These disturbances were dispersed throughout the unit and collectively had a substantial impact on the unit's natural character.

ONDA's 2005 inventory concluded that their proposed 55,268-acre Coglan Buttes proposed WSA appeared in a generally natural condition. Rationale for this finding was due to their assessment that guzzlers are not permanent structures, have limited visibility due to topography, and could be removed; unnatural features such as the radio repeater, tower, power lines, and a gravel pit should be cut out of the unit; and while the unit does contain seedings, they blend into the landscape and appear natural (p. 36-37 of ONDA 2005). However, as noted above, the BLM found that this proposed WSA is not one large roadless unit, but is comprised of smaller inventory units, within which the natural character of the unit must be evaluated individually.

The unit currently contains the following man-made developments/disturbances: 187 acres of chemical treatments, 33 acres of mow strips (fuel breaks), 3.75 miles of motorized routes, 6 miles of reclaiming routes, 4 miles of fence, and 5 waterholes.

Presently, almost 4 decades after the original inventory, these developments are weathered and grown over with herbaceous grasses and sagebrush. As a result, developments now fade into the background of the unit and are largely only noticeable at a close distance (1/4th mile or less) and are thus substantially unnoticeable from further distances. Furthermore, many of

the disturbances are located near the perimeter of the unit and, as such, have a small area of influence.

Based on a review of all the available information including photos, staff knowledge, and field review, the BLM concluded that the unit appears in a natural condition where the imprints of man are substantially unnoticeable.

(3) Does the unit (or the remainder of the unit if a portion has been excluded due to unnaturalness and the remainder is of sufficient size) **have outstanding opportunities for solitude?** Yes _____ No X N/A _____

In 1980, historic Unit 1-96 was found to have minimal potential for solitude due to the lack of vegetative and topographic screening. It was noted that the cliffs of Coglan Buttes offered some isolated sites where solitude could be achieved, but overall the unit did not offer an outstanding opportunity.

In 2005, ONDA's inventory found their larger 55,268-acre Coglan Buttes proposed WSA and the original individual units within the proposal to have plentiful topographic and vegetative screening on their own. ONDA cited rolling topography, rimrock, tall sagebrush, and sheer size as evidence of outstanding opportunities for solitude (p. 37 of ONDA 2005). However, the BLM did not find this proposal to be one large roadless area, but is comprised of a number of smaller inventory units that must be evaluated individually.

The BLM acknowledges that there are limited opportunities for solitude within the Coglan Buttes East inventory unit. Topographically, the majority of the unit is a flat (slightly sloping to the east) with gently rolling hills with a few minor lakebed depressions (5-20 ft. deep) including Keen Waterhole. Additionally, the unit contains a minor ridge (3 miles long, 40 ft. high) in the northwest corner and a few shallow drainages (5-35 ft. deep) in the southern third of the unit. Overall, the unit ranges in elevation from 5,045 to 5,375 feet. Vegetatively, the unit consists of sagebrush, rabbit brush, and grass. These opportunities are less than outstanding as the area's characteristic landscape lacks vegetative screening and existing topographic screening is insufficient to effectively allow those recreating in the area to avoid the sights and sounds of others.

Thus, for the reasons specified above and based on a review of all the available information including (BLM and citizen provided) photos, staff knowledge, and field review, the BLM concluded the Coglan Buttes East inventory unit does not possess outstanding opportunities for solitude.

(4) Does the unit (or the remainder of the unit if a portion has been excluded due to unnaturalness and the remainder is of sufficient size) **have outstanding opportunities for primitive and unconfined recreation?** Yes _____ No X N/A _____

In 1980, historic Unit 1-96 noted the cliffs of Coglan Buttes offered some isolated sites where primitive and unconfined recreation could be achieved, but overall the unit did not offer outstanding opportunities.

In 2005, ONDA's inventory found their larger 55,268-acre Coglean Buttes proposed WSA and the original individual units within the proposal to have plentiful opportunities for hiking, backpacking, photography, birding, horseback riding, and exploration of area's diverse geology (p. 37 of ONDA 2005). However, the BLM did not find this proposal to be one large roadless area, but is in fact comprised of a number of smaller inventory units that must be evaluated individually.

The BLM finds the unit offers limited opportunities for hiking, horseback riding, backpacking, camping, wildlife observation, exploration, scenery, photography, stargazing, trapping, and hunting. However, the BLM determined that the unit does not possess outstanding opportunities for primitive and unconfined recreation through either the diversity of recreational activities possible in the area or by the outstanding quality of one opportunity relative to opportunities found within the Lakeview Resource Area.

(5) Does the unit have supplemental values? Yes No N/A

Supplemental values were not evaluated as the unit was determined to lack both outstanding opportunities for solitude and or primitive and unconfined recreation, and therefore does not meet the minimum wilderness criteria.

Summary of Findings and Conclusion

Unit Number/Name: OR-015-096A/ Coglan Buttes East

Summary Results of Analysis:

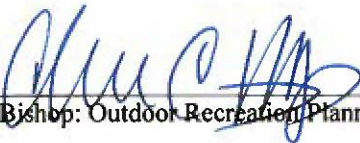
- 1. Does the area meet the size requirements? Yes No
- 2. Does the area appear to be natural? Yes No
- 3. Does the area offer outstanding opportunities for solitude or a primitive and unconfined type of recreation? Yes No NA
- 4. Does the area have supplemental values? Yes No NA

Conclusion (Check One):

The area- or a portion of the area- has wilderness character:
(items 1, 2 and 3 must be checked "yes").

The area does not have wilderness character: *(any of items 1, 2 and 3 are checked "no").*

Prepared by (Member Names and Titles):



Chris Bishop: Outdoor Recreation Planner

11/1/2018
Date


Jami Ludwig: Assistant Field Manager

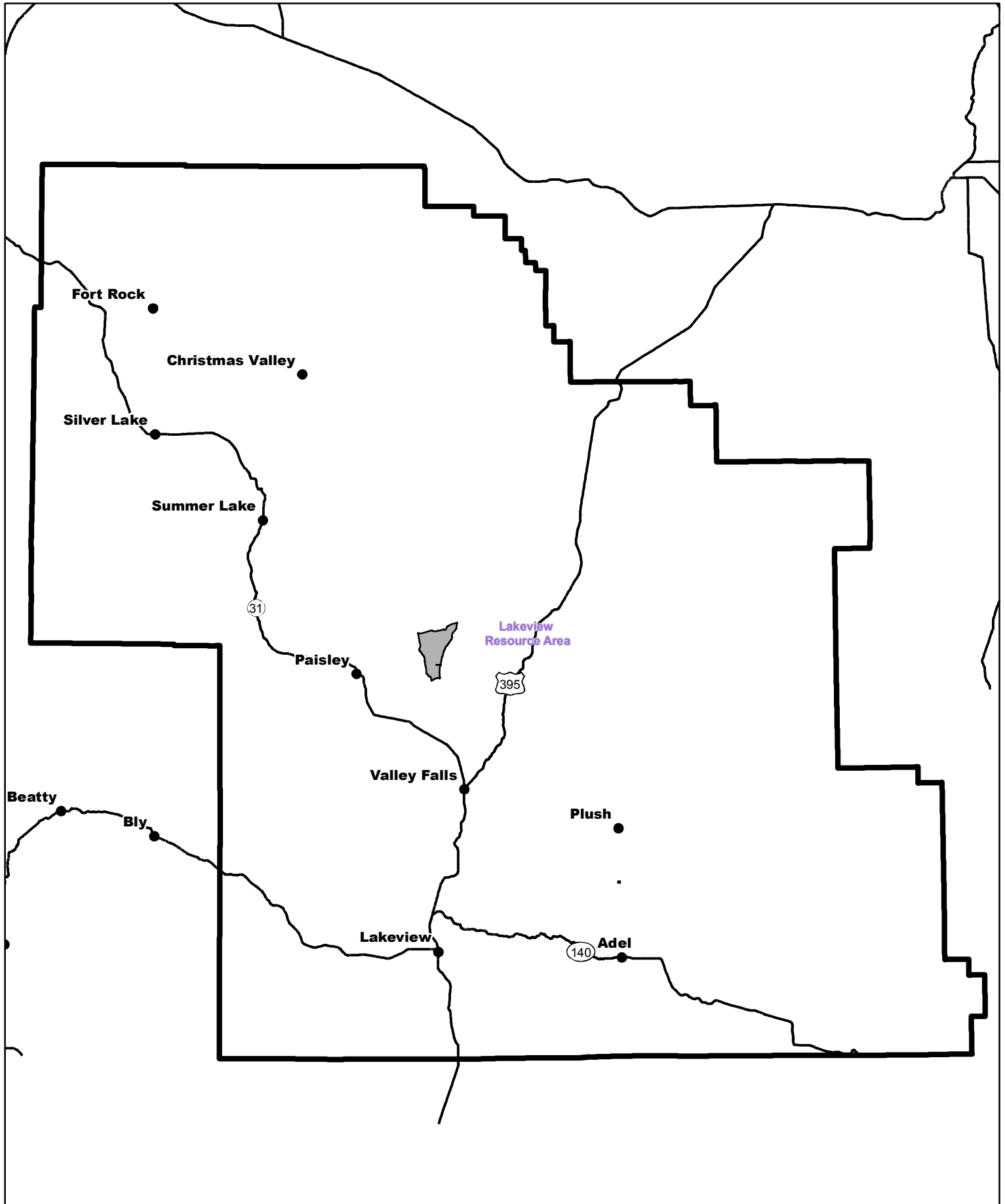
11/1/18
Date


Approved by:

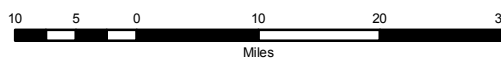

J. Todd Forbes
Field Manager


11/1/18
Date

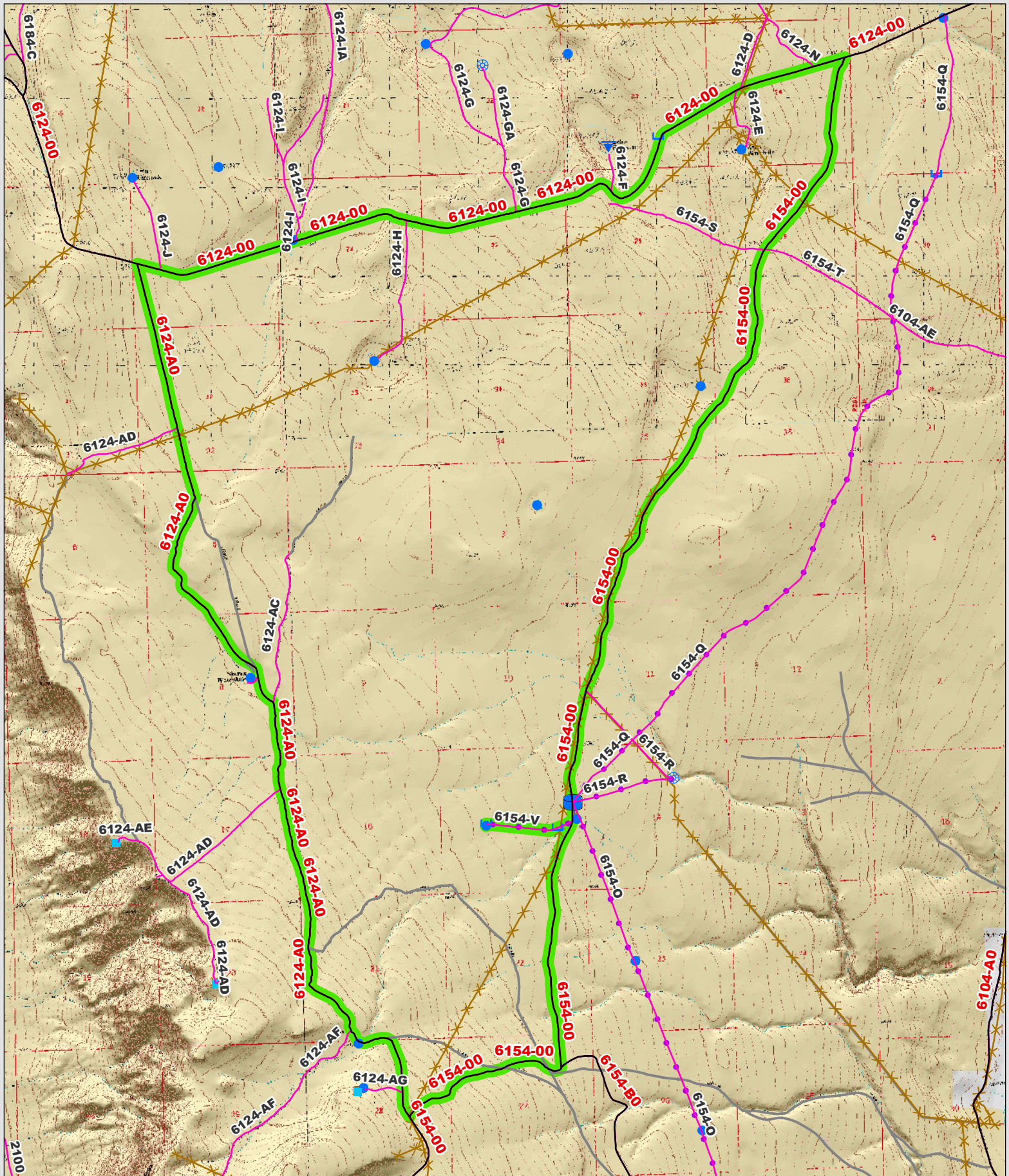
This form documents information that constitutes an inventory finding on wilderness characteristics. It does not represent a formal land use allocation or a final agency decision subject to administrative remedies under 43 CFR parts either 4 or 1610.5-2.



 Wilderness Character Inventory Unit



 No warranty is made by the Bureau of Land Management as to the accuracy, reliability, or completeness of these data for individual or aggregate use with other data. Original data were compiled from various sources. This information may not meet National Map Accuracy Standards. This product was developed through digital means and may be updated without notification.



Wilderness Character Inventory Unit

Ownership

- Bureau of Land Management
- U.S. Forest Service
- State
- Private/Unknown

Roads/Trails

- Motorized Routes
- Highways
- Reclaiming Routes
- Interim Routes

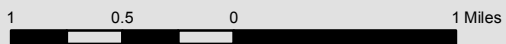
Pipelines and Ditches

- Ditch
- Water Pipeline
- Guzzler
- Fences

Water Developments

- Dam
- Reservoir
- Spring Development
- Trough
- Water Diversion

- Water Tank
- Waterhole
- Well - Water



No warranty is made by the Bureau of Land Management as to the accuracy, reliability, or completeness of these data for individual or aggregate use with other data. Original data were compiled from various sources. This information may not meet National Map Accuracy Standards. This product was developed through digital means and may be updated without notification.