

Year: 2018

Inventory Unit Number/Name: OR-015-027/ Christmas Valley East

FORM 1

DOCUMENTATION OF BLM WILDERNESS INVENTORY FINDINGS ON RECORD

1. Is there existing BLM wilderness inventory information on all or part of this area?

No _____ Yes X (if more than one unit is within the area, list the names/numbers of those units):

a) **Inventory Source:** BLM Wilderness Inventory files for Pacific Power and Light Company (PP&L) Transmission Line: PP&L Roadless Area Inventory Files (1977).

b) **Inventory Unit Number(s)/Name(s):** OR-010-27, OR-010-01-11 (1-26, 1-27)/ Christmas Valley East, Vaughn Well

c) **Map Name(s)/Number(s):** Wilderness Review – Initial Inventory: Final Decision on Public Lands Obviously Lacking Wilderness Characteristics and Announcement of Public Lands to be Intensively Inventoried for Wilderness Characteristics; USDI BLM - Oregon and Washington, August 1979.

d) **BLM District(s)/Field Office(s):** Lakeview District, Lakeview Resource Area.

2. BLM Inventory Findings on Record:

Existing inventory information regarding wilderness characteristics (if more than one BLM inventory unit is associated with the area, list each unit and answer each question individually for each inventory unit):

Unit #	Size (historic acres)	Natural Condition? Y/N	Outstanding Solitude? Y/N	Outstanding Primitive & Unconfined Recreation? Y/N	Supplemental Values? Y/N
1-26/27	12,200	Y	N	N	N/A
1-27*	5,078	N	N	N	N/A

*The inventory of this unit was updated in 2011. However, due to a State Office-sponsored Wilderness Inventory Consistency Evaluation and subsequent guidance, the 2011 inventory analysis and findings are being replaced by this current 2018 inventory review. Documentation of the 2011 inventory can be found in the wilderness inventory project record.

Summarize any known primary reasons for prior inventory findings listed in this table:

In 1977/78 historic Unit 1-26/27 were described as a flat valley bottom with small playa lakebeds between low sand dunes. Vegetation was dominated by salt desert shrubs. Internal intrusions to naturalness included a cleared fence crossing the middle of the unit, motorcycle race course use, and a few "ways." Outside intrusions to naturalness included a large power line crossing seen from the entire area to the south, a gravel county road to the north, farm lands to the west. Additionally, outstanding opportunities for solitude or primitive and unconfined recreation were not found to be present.

FORM 2

**DOCUMENTATION OF CURRENT WILDERNESS INVENTORY
CONDITIONS**

Unit Number/Name: OR-015-027/ Christmas Valley East

(1) Is the unit of sufficient size? Yes No

Between 2007 and 2016, BLM staff conducted field inventory in the area as part of a process to update its road and wilderness inventories and to gather additional information to supplement ONDA's wilderness information. This fieldwork included photo documentation of the boundary and interior routes and a re-evaluation of wilderness characteristics for this area. Using both ONDA and BLM photos, field logs, and staff field knowledge, the BLM completed route analysis within the area in 2017.

The BLM determined that the inventory unit is bounded by BLM Road 6194-00 to the east; a right-of-way for a PG&E 500 KV power line to the south; 6131-00, BLM interim numbered road 6131-A0, a power line right-of-way, and private lands to the west; BLM interim numbered road 2147-F0 to the northwest; and BLM interim numbered road 6194-O0 and private lands to the northeast. The unit contains a 650 acre inholding in the southwest corner. Due to changes in boundary determinations (road and power line rights-of-ways buffer corrections) approximately 55 acres were removed from the unit.

Thus, based on these boundary and road determinations, the BLM found the Christmas Valley East inventory unit to exceed the minimum size criteria at approximately 5,023 acres of BLM-administered lands.

Additional background on the process the BLM followed during this evaluation is contained in the document, *Wilderness Inventory Maintenance Process for the Lakeview Resource Area, BLM* and in the *Route Analysis Forms*. Both documents can be found in the wilderness inventory file.

DESCRIPTION OF CURRENT CONDITIONS:

This unit is located approximately 13 miles southeast of Christmas Valley, Oregon. It is approximately 5 miles long by 2 miles wide. Topographically, the entirety of the unit is the

flat lakebed of Christmas Lake Valley with small alkali openings among greasewood covered sand dunes (5-10 ft. high). Overall, the unit ranges in elevation from 4,300 to 4,330 feet.

(2) Is the unit in a natural condition? Yes No N/A

In 1977/78, historic Unit 1-27 was found to be in an unnatural state due primarily outside influences. Internal impacts included a cleared fence crossing the middle of the unit, motorcycle race course use, and a few “ways.”

The unit currently contains the following man-made developments/disturbances: 115 acres of wildfire, 14 acres of mowing, and 14 acres of seeding.

Presently, almost 4 decades after the original inventory, these developments are weathered and grown over with herbaceous grasses and sagebrush. As a result, developments now fade into the background of the unit and are largely only noticeable at a close distance (1/4th mile or less) and are thus substantially unnoticeable from further distances. Furthermore, many of the disturbances are located near the perimeter of the unit and, as such, have a small area of influence. Areas burned in wildfires have either revegetated naturally or were seeded.

Based on a review of all the available information including photos, staff knowledge, and field review, the BLM concluded that the unit appears in a natural condition where the imprints of man are substantially unnoticeable.

(3) Does the unit (or the remainder of the unit if a portion has been excluded due to unnaturalness and the remainder is of sufficient size) have outstanding opportunities for solitude? Yes No N/A

In 1977/78, historic Unit 1-27 was found to lack outstanding opportunities for solitude.

The BLM determined that opportunities for solitude within the Christmas Valley East inventory unit are severely limited. Topographically, the entirety of the unit is the flat lakebed of Christmas Lake Valley with small alkali openings among greasewood covered sand dunes (5-10 ft. high). Overall, the unit ranges in elevation from 4,300 to 4,330 feet. These opportunities are less than outstanding as the area’s characteristic landscape lacks vegetative screening and existing topographic screening is insufficient to effectively allow those recreating in the area to avoid the sights and sounds of others.

Thus, for the reasons specified above and based on a review of all the available information including (BLM and citizen provided) photos, staff knowledge, and field review, the BLM concluded the Christmas Valley East inventory unit does not possess outstanding opportunities for solitude.

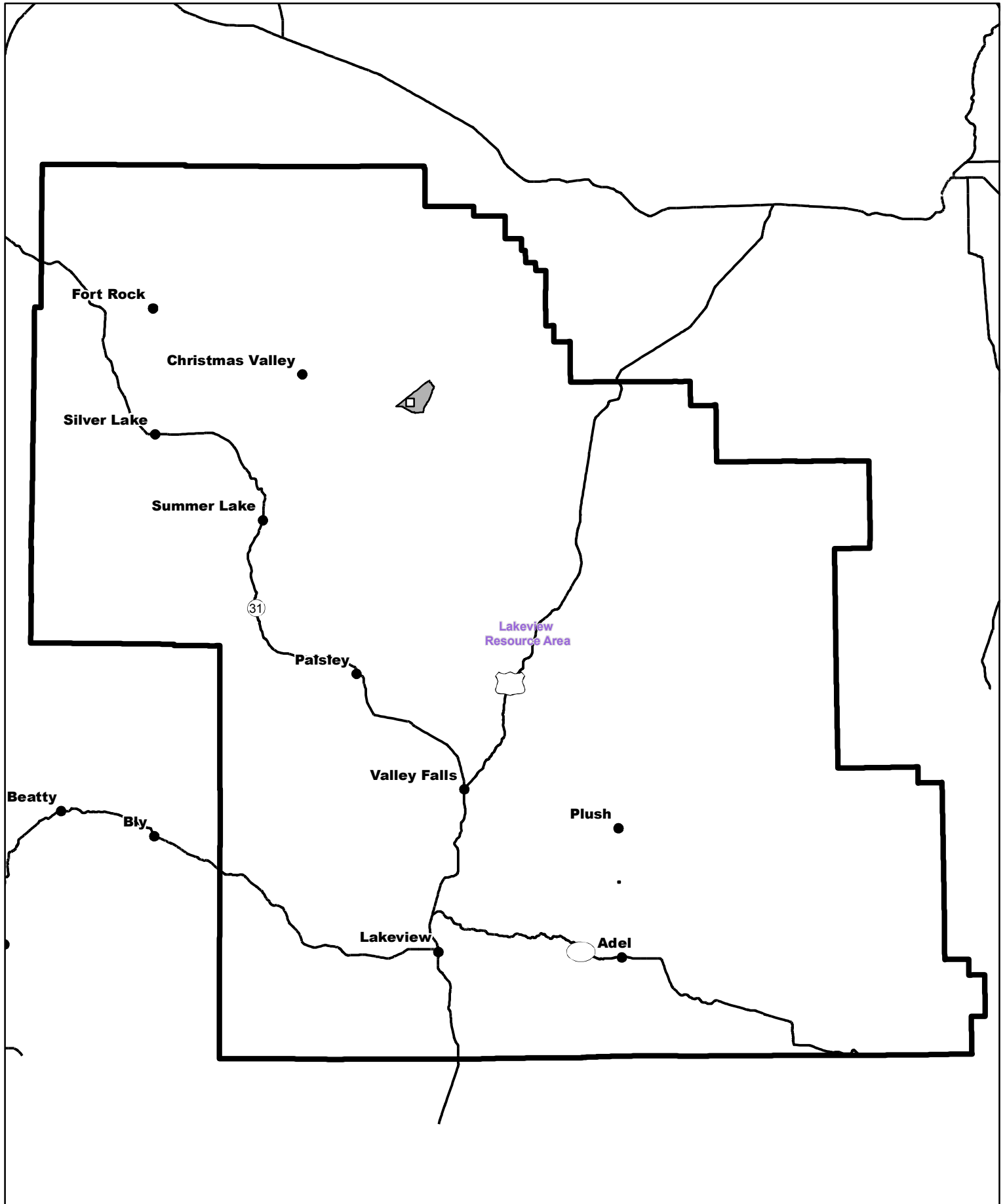
(4) Does the unit (or the remainder of the unit if a portion has been excluded due to unnaturalness and the remainder is of sufficient size) **have outstanding opportunities for primitive and unconfined recreation?** Yes _____ No X N/A _____


In 1977/78, historic Unit 1-27 was found to lack outstanding opportunities for primitive and unconfined recreation.

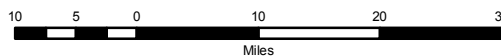
The BLM finds the unit offers limited opportunities for hiking, horseback riding, backpacking, camping, wildlife observation, exploration, scenery, photography, stargazing, trapping, and hunting. However, the BLM determined that the unit does not possess outstanding opportunities for primitive and unconfined recreation through either the diversity of recreational activities possible in the area or by the outstanding quality of one opportunity relative to opportunities found within the Lakeview Resource Area.


(5) Does the unit have supplemental values? Yes _____ No _____ N/A X

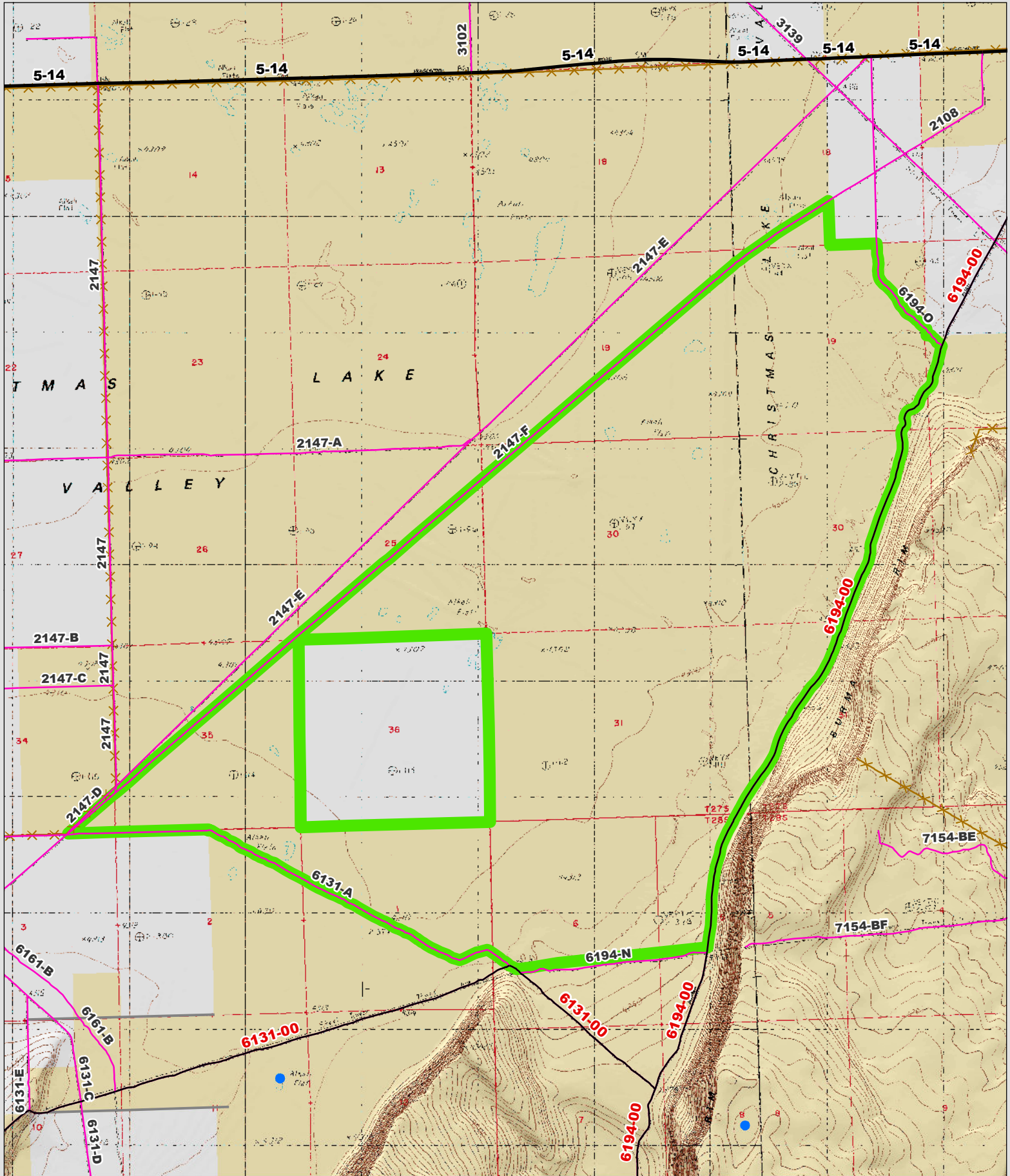
Supplemental values were not evaluated as the unit was determined to lack both outstanding opportunities for solitude and or primitive and unconfined recreation, and therefore does not meet the minimum wilderness criteria.



 Wilderness Character Inventory Unit



 No warranty is made by the Bureau of Land Management as to the accuracy, reliability, or completeness of these data for individual or aggregate use with other data. Original data were compiled from various sources. This information may not meet National Map Accuracy Standards. This product was developed through digital means and may be updated without notification.



- Wilderness Character Inventory Unit
- Ownership**
- Bureau of Land Management
- U.S. Forest Service
- State
- Private/Unknown

- Motorized Routes
- Highways
- Reclaiming Routes
- Interim Routes

- Ditch
- Water Pipeline
- Guzzler
- ✕ Fences

- |— Dam
- ▲ Reservoir
- L Spring Development
- U Trough
- |— Water Diversion

- Water Tank
- Waterhole
- ⊙ Well - Water

0.8 0.4 0 0.8 Miles

No warranty is made by the Bureau of Land Management as to the accuracy, reliability, or completeness of these data for individual or aggregate use with other data. Original data were compiled from various sources. This information may not meet National Map Accuracy Standards. This product was developed through digital means and may be updated without notification.