

Year: 2018

Inventory Unit Number/Name: OR-015-081/ Biscuit Point

FORM 1

DOCUMENTATION OF BLM WILDERNESS INVENTORY FINDINGS ON RECORD

1. Is there existing BLM wilderness inventory information on all or part of this area?

No _____ Yes X (if more than one unit is within the area, list the names/numbers of those units):

a) Inventory Source:

- a. Wilderness – Proposed Initial Inventory: Roadless Areas and Islands Which Clearly Do Not Have Wilderness Characteristics; USDI BLM - Oregon and Washington, April 1979.
- b. Wilderness Inventory – Final Intensive Inventory Decisions; USDI BLM - Oregon and Washington, November 1980.

b) Inventory Unit Number(s)/Name(s): 1-81, 1-82/ North Euchre Butte

b) Map Name(s)/Number(s):

- a. Final Decision - Initial Wilderness Inventory: Public Lands and Islands Which Do Not Have Wilderness Characteristics and Units To Be Intensively Inventoried; USDI BLM - Oregon, August 1979.
- b. Intensive Wilderness Inventory - Final Decisions; USDI BLM - Oregon, November 1980.

d) BLM District(s)/Field Office(s): Lakeview District, Lakeview Resource Area.

2. BLM Inventory Findings on Record:

Existing inventory information regarding wilderness characteristics (if more than one BLM inventory unit is associated with the area, list each unit and answer each question individually for each inventory unit):

Unit#	Size (historic acres)	Natural Condition? Y/N	Outstanding Solitude? Y/N	Outstanding Primitive & Unconfined Recreation? Y/N	Supplemental Values? Y/N
1-81	7,000	N	NA	NA	NA
1-81*	8,494	N	NA	NA	NA
1-82	22,600	N	N	N	N
1-82A*	9,773	N	NA	NA	NA

1-82B*	14,090	N	NA	NA	NA
--------	--------	---	----	----	----

*The inventory of this unit was updated in 2010. However, due to a State Office-sponsored Wilderness Inventory Consistency Evaluation and subsequent guidance, the 2010 inventory analysis and findings are being replaced by this current 2018 inventory review. Documentation of the 2010 inventory can be found in the wilderness inventory project record.

Summarize any known primary reasons for prior inventory findings listed in this table:

In 1979, historic Unit 1-81 was described as rolling hills with some rims. Vegetation of a majority of the unit was listed as seeded grass. Private lands were present along the southern boundary of the unit. The original conclusion was that the unit was dominated by the works of man and not natural. Opportunities for solitude, primitive and unconfined recreation, and supplemental values were not evaluated.

In 1980, historic Unit 1-82 was described as rolling terrain with moderately high broken basalt rims and draws. Its appearance was described as being open with exposed sagebrush flats. The unit contained ten ephemeral lakebed pits, five of which have developed lakebed pits. The western side of the unit had approximately 4,000 acres of drilled seeding, while the dominant vegetation in the rest of the unit was sagebrush. The seeding was noted as having a substantial effect on the unit's naturalness. A 500KV power line formed the entire eastern boundary, its presence also had a significant impact on naturalness through roughly 40% of the unit. The unit also contained 10 miles of "ways," and 7 miles of pasture division fence. The overall finding was the unit did not appear natural due to the noticeable works of man. Rolling contours in portions of the unit offered only a minimal opportunity for solitude. The remaining flat portions of the unit did not offer on an opportunity to avoid the sights and sounds of others in the unit. The unit did not offer an outstanding opportunity for solitude. The unit offered some potential for hunting, but did not provide any significant opportunities for other types of primitive and unconfined recreation.

FORM 2

**DOCUMENTATION OF CURRENT WILDERNESS INVENTORY
CONDITIONS**

Unit Number/Name: OR-015-081/ Biscuit Point

(1) Is the unit of sufficient size? Yes No

Between 2007 and 2016, BLM staff conducted field inventory in the area as part of a process to update its road and wilderness inventories and to gather additional information to supplement ONDA's wilderness information. This fieldwork included photo documentation of the boundary and interior routes and a re-evaluation of wilderness characteristics for this area. Using both ONDA and BLM photos, field logs, and staff field knowledge, the BLM completed route analysis within the area in 2017.

The BLM determined that the inventory unit is bounded by BLM road 6184-00 to the north; 6104-00 and private lands to the west; a right-of-way for County Road 2-06 and private lands to the south; 6114-A0, State of Oregon lands, and a right-of-way for a Bonneville Power Administration power line to the east. Due to changes in boundary determinations (roads and power line rights-of-ways buffer corrections) and cut-outs of unnatural features (mineral pit), approximately 18,900 acres were added to the unit. Portions of BLM route 6184-A0 was found to no longer meet the wilderness definition of a road.

Thus, based on these boundary and road determinations, the BLM found the Biscuit Point inventory unit to exceed the minimum size criteria at approximately 32,991 acres of BLM-administered lands.

Additional background on the process the BLM followed during this evaluation is contained in the document, *Wilderness Inventory Maintenance Process for the Lakeview Resource Area, BLM* and in the *Route Analysis Forms*. Both documents can be found in the wilderness inventory file.

DESCRIPTION OF CURRENT CONDITIONS:

This unit is located approximately 10.5 miles southwest of Alkali Lake, Oregon. It is approximately 11 miles long by 6.5 miles wide. Topographically, the unit is dominated by an 8 mile long rim (150-350 ft. high) running parallel to the western boundary. The central portion of the unit consist of small to moderate rims, buttes (50-200 ft. high), and the upper drainages of Shell Rock Canyon (15-200 ft. deep) running to the south. The eastern portion of the unit is comprised of rolling hills and numerous dry lakebed depressions (15-75 ft. deep). Overall, the unit ranges in elevation from 4,300 to 5,121 feet. Vegetation is comprised of sagebrush and grasses.

(2) Is the unit in a natural condition? Yes _____ No X N/A _____

In 1979, historic Unit 1-81 concluded that the unit was dominated by the works of man and not natural.

In 1980, historic Unit 1-82 contained five developed lakebed pits and 4,000 acres of drilled seeding, which was noted as having a substantial effect on the unit's naturalness. A 500KV power line formed the entire eastern boundary, its presence also had a significant impact on naturalness throughout roughly 40% of the unit. The unit also contained 10 miles of "ways," and 7 miles of pasture division fence. The overall finding was the unit did not appear natural due to the noticeable works of man.

The unit currently contains the following man-made developments/disturbances: 21,438 acres of wildfire, 15,297 acres of seeding, 12,967 acres of chaining, 7.5 acres fire breaks (mowing), 1 acre of abandoned mining sites, 42 miles of fence, over 8 miles of pipelines, 53.5 miles of motorized routes, 11 miles of cat lines, 2 wildlife guzzlers, 20 waterholes, 2 reservoirs, a water tank, well, and 6 troughs.

The man-made disturbances within the unit as a whole have increased substantially since the last inventory and are widespread across the unit. The overall resulting appearance of the landscape is more agricultural than natural stemming largely from past widespread fires, seeding, chainings, and widespread water and motorized route development. These disturbances are easily noticeable by the casual observer when moving throughout the unit.

Based on a review of all the available information including photos, staff knowledge, and field review, the BLM concluded that the unit does not appear in a natural condition as the imprints of man are substantially noticeable.

(3) Does the unit (or the remainder of the unit if a portion has been excluded due to unnaturalness and the remainder is of sufficient size) **have outstanding opportunities for solitude?** Yes ___ No ___ N/A X

Opportunities for solitude were not evaluated as the unit was determined to lack naturalness and therefore does not meet the minimum wilderness criteria.

(4) Does the unit (or the remainder of the unit if a portion has been excluded due to unnaturalness and the remainder is of sufficient size) **have outstanding opportunities for primitive and unconfined recreation?** Yes ___ No ___ N/A X

Opportunities for primitive and unconfined recreation were not evaluated as the unit was determined to lack naturalness and therefore does not meet the minimum wilderness criteria.

(5) Does the unit have supplemental values? Yes ___ No ___ N/A X

Supplemental values were not evaluated as the unit was determined to lack naturalness and therefore does not meet the minimum wilderness criteria.

Summary of Findings and Conclusion

Unit Number/Name: OR-015-081/ Biscuit Point

Summary Results of Analysis:

- 1. Does the area meet the size requirements? X Yes No
- 2. Does the area appear to be natural? Yes X No
- 3. Does the area offer outstanding opportunities for solitude or a primitive and unconfined type of recreation? Yes No X NA
- 4. Does the area have supplemental values? Yes No X NA

Conclusion (Check One):

 The area- or a portion of the area- has wilderness character:
(items 1, 2 and 3 must be checked "yes").

 X The area does not have wilderness character: *(any of items 1, 2 and 3 are checked "no").*

Prepared by (Member Names and Titles):


Chris Bishop, Outdoor Recreation Planner

11/1/2018
Date


Jami Ludwig: Assistant Field Manager

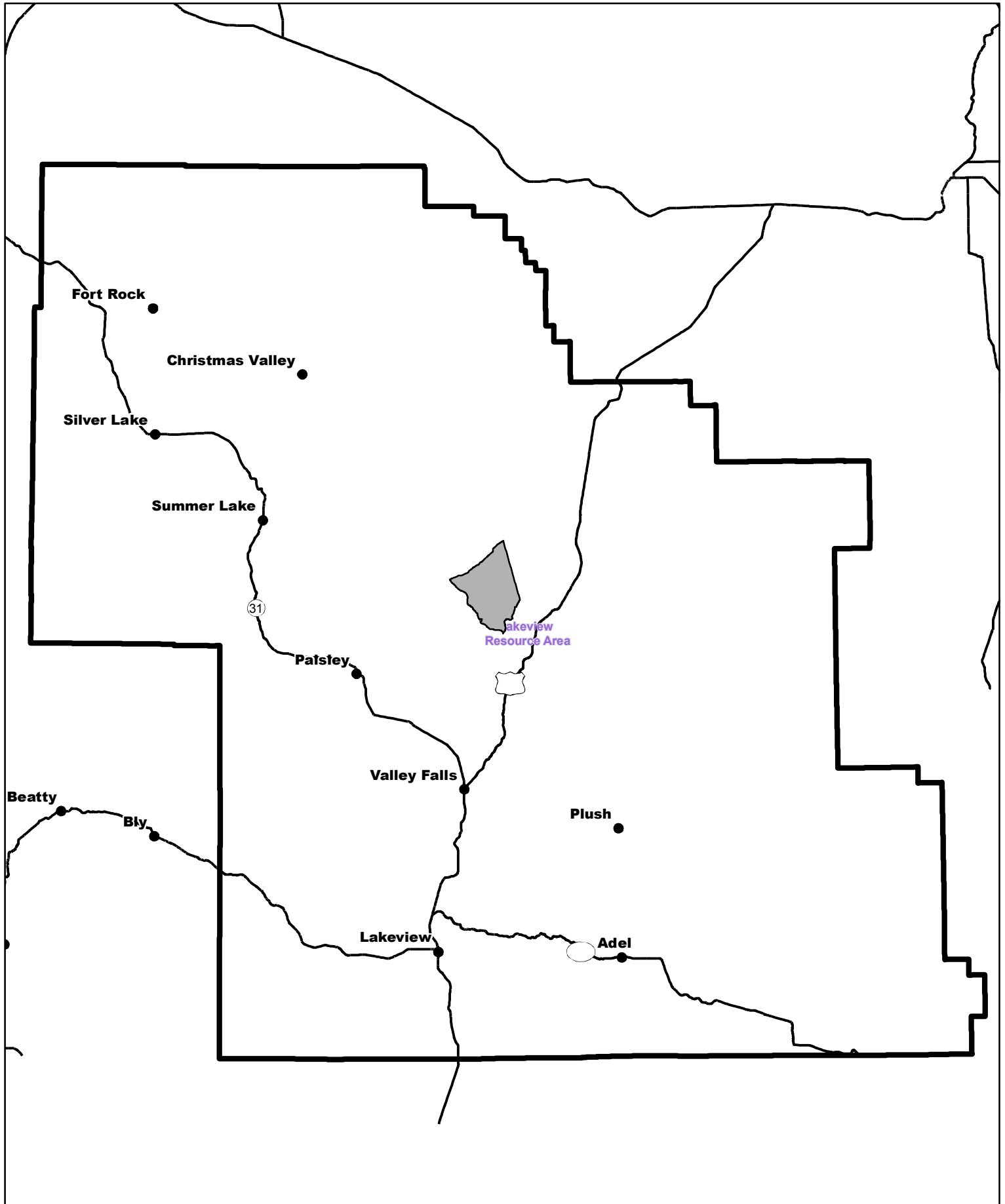
11/1/18
Date


Approved by:

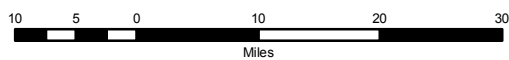

J. Todd Forbes
Field Manager


11/1/18
Date

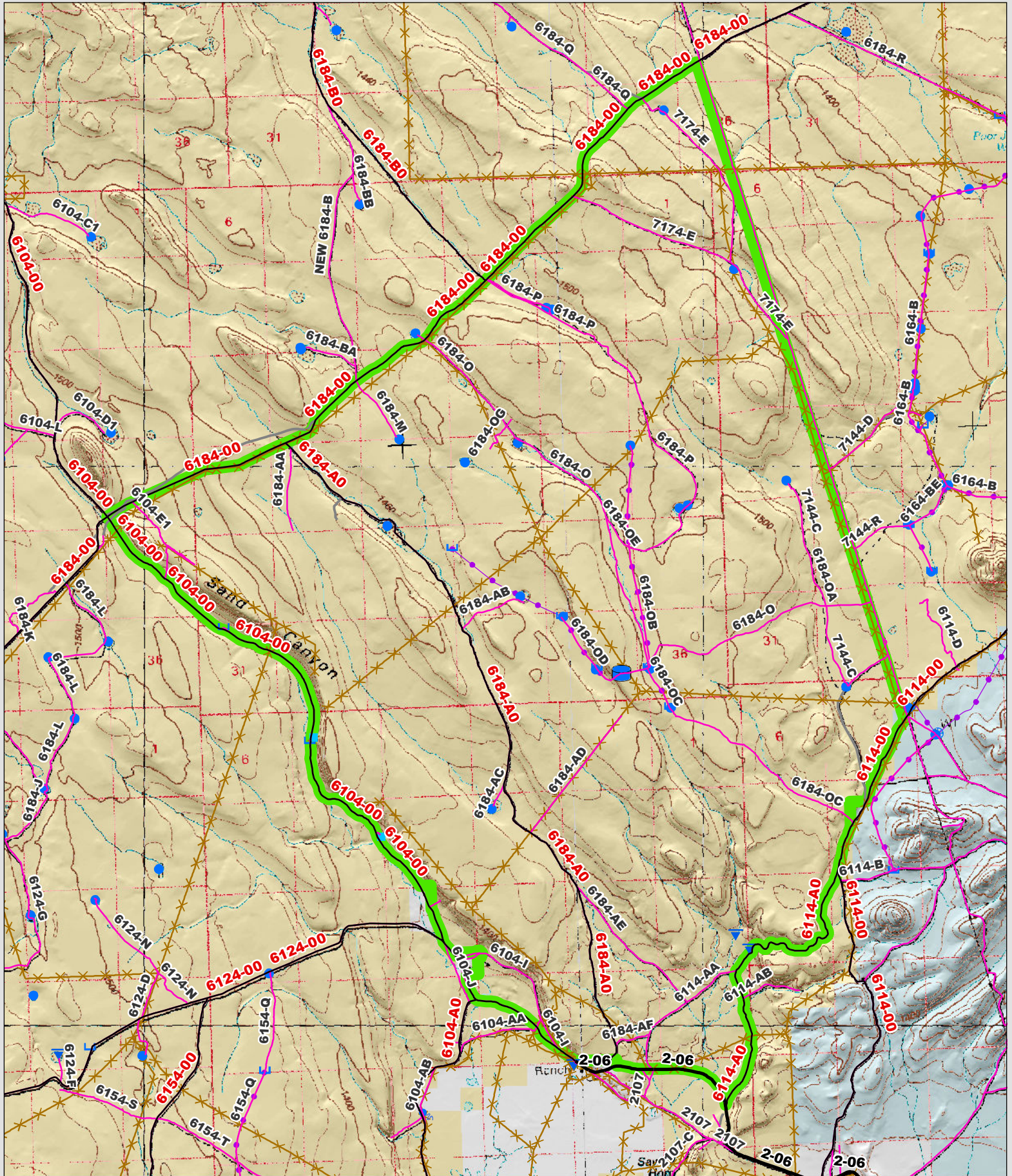
This form documents information that constitutes an inventory finding on wilderness characteristics. It does not represent a formal land use allocation or a final agency decision subject to administrative remedies under 43 CFR parts either 4 or 1610.5-2.



 Wilderness Character Inventory Unit



 No warranty is made by the Bureau of Land Management as to the accuracy, reliability, or completeness of these data for individual or aggregate use with other data. Original data were compiled from various sources. This information may not meet National Map Accuracy Standards. This product was developed through digital means and may be updated without notification.



Wilderness Character Inventory Unit

Ownership

- Bureau of Land Management
- U.S. Forest Service
- Private/Unknown

Roads/Trails

- Motorized Routes
- Highways
- Reclaiming Routes
- Interim Routes

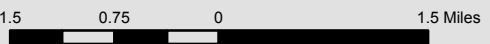
Pipelines and Ditches

- Ditch
- Water Pipeline
- Guzzler
- Fences

Water Developments

- Dam
- Reservoir
- Spring Development
- Trough
- Water Diversion

- Water Tank
- Waterhole
- Well - Water



No warranty is made by the Bureau of Land Management as to the accuracy, reliability, or completeness of these data for individual or aggregate use with other data. Original data were compiled from various sources. This information may not meet National Map Accuracy Standards. This product was developed through digital means and may be updated without notification.