



U.S. Department of the Interior  
Bureau of Land Management

**COLORADO NORTHWEST DISTRICT**

**LITTLE SNAKE FIELD OFFICE**

**TRAVEL MANAGEMENT AREA 1  
PROPOSED DECISION**



October 2011

BLM

Colorado State Office - Little Snake Field Office



## Little Snake

### RECORD OF DECISION and APPROVED Resource Management Plan



Public Lands USA: Use, Share, Appreciate

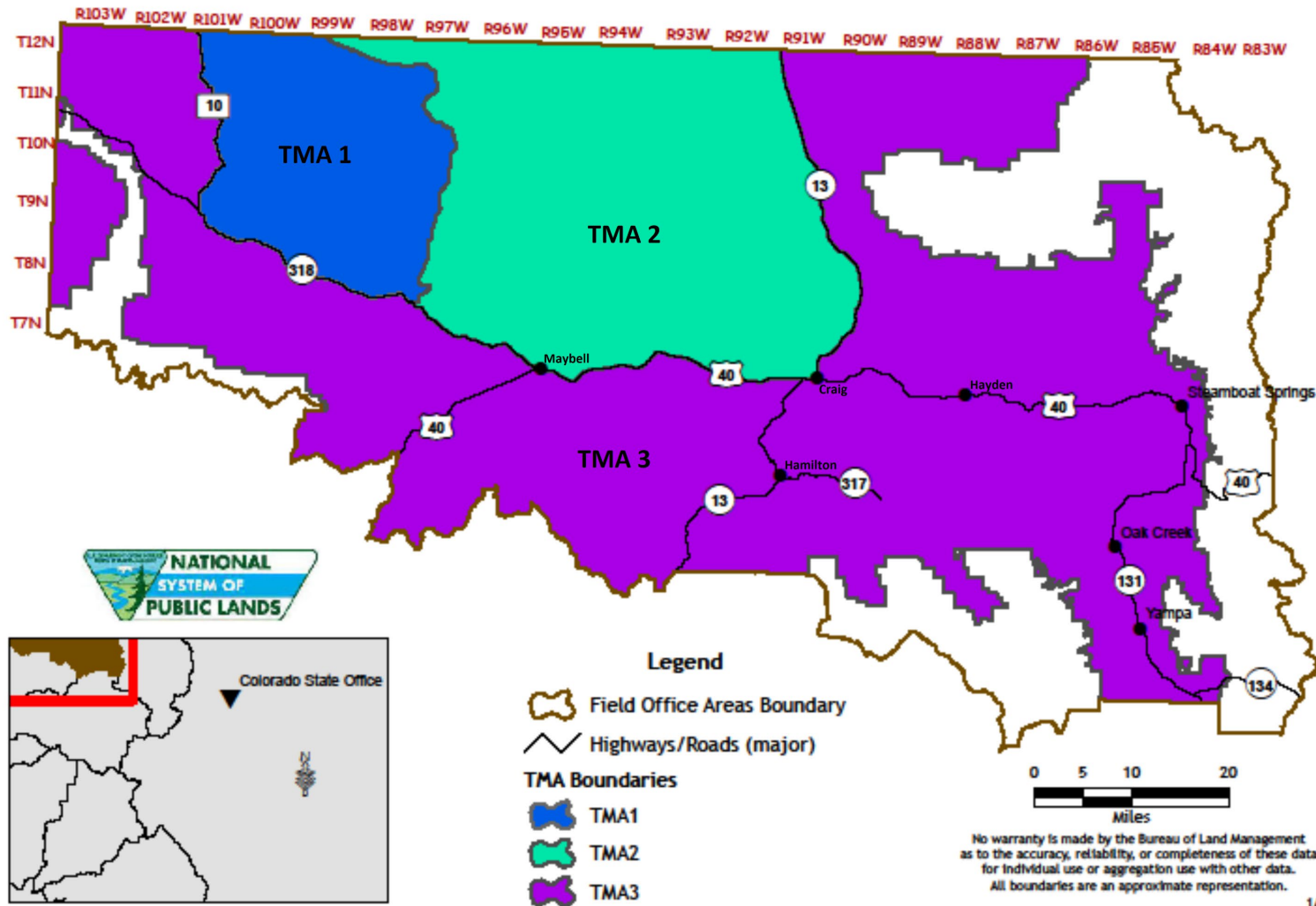
# RMP DECISIONS

## TRAVEL AND TRANSPORTATION MANAGEMENT

- Directed comprehensive Travel and Transportation Management Planning on undesignated routes (RMP-53)
- Limited motorized travel to existing and designated roads and trails (RMP-55)
- Created the Sand Wash OHV Open Area and the three areas managed for wilderness character (RMP-47; RMP-33)

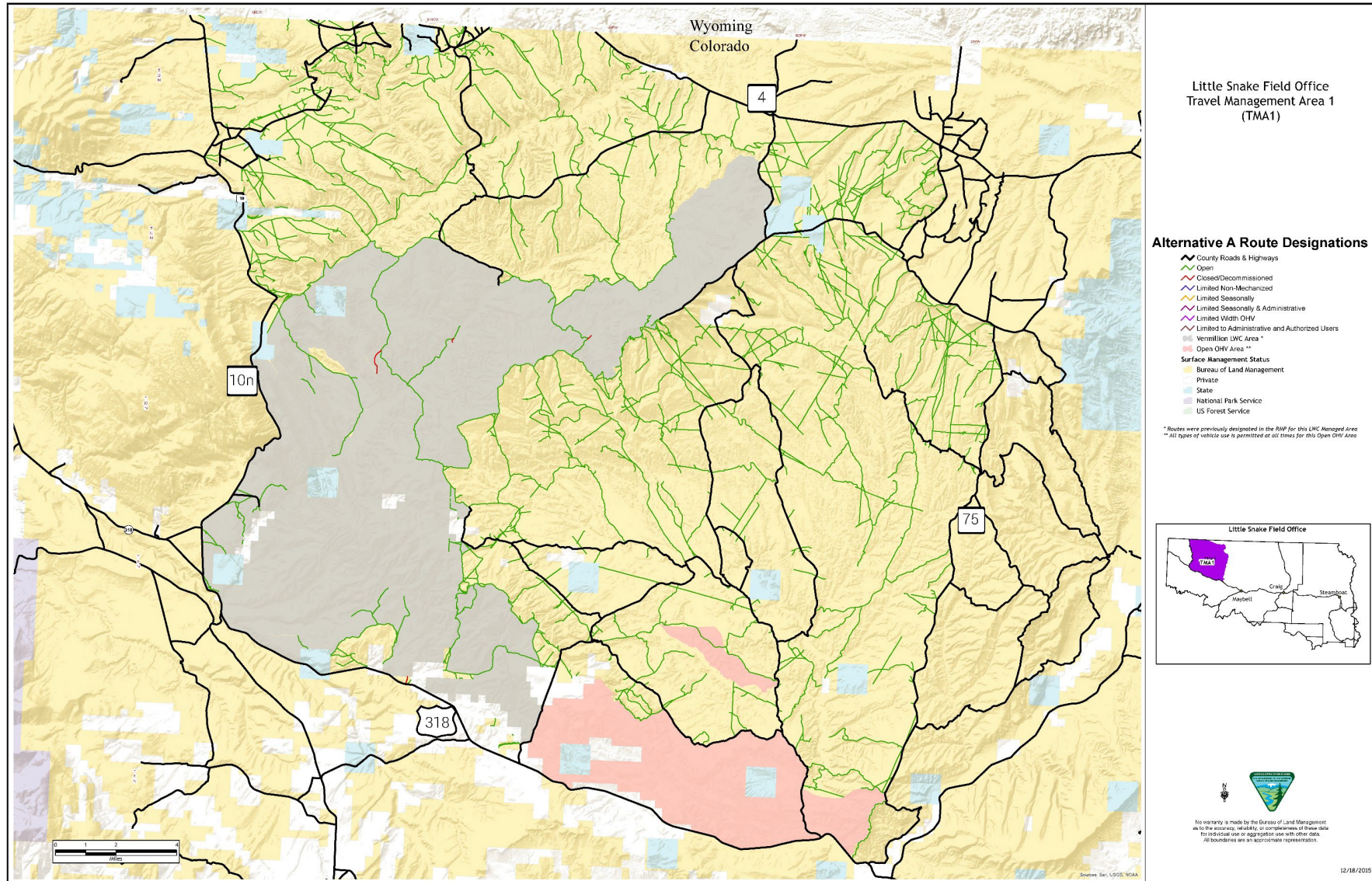


Bureau of Land Management  
Little Snake Field Office  
Travel Management Planning Areas





# Travel Management Area 1 Inventoried Routes





# Travel Management Area 1- Route Inventory Data

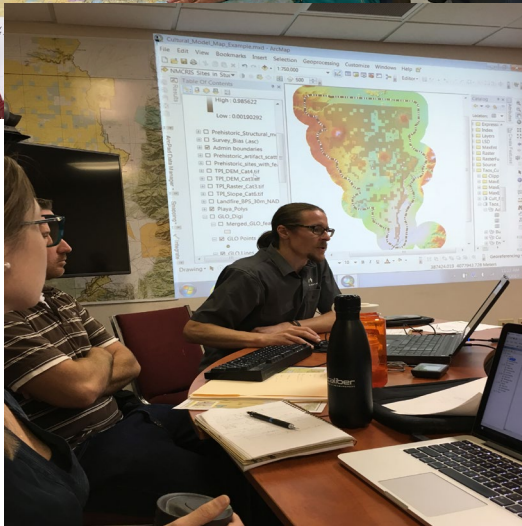
**Table 2.2-1 Miles of Roads in Alternative A**

| Type of Road                                     | Number of Segments | Miles         |
|--|--------------------|---------------|
| Primitive Road – Open                            | 1543               | 561.80        |
| Road – Open                                      | 79                 | 323.12        |
| Trail – Open                                     | 87                 | 35.12         |
| Temporary Road - Open                            | 200                | 42.59         |
| Closed/Decommissioned                            | 4                  | 1.51          |
| Primitive Road – Limited (Seasonal Closure)      | 0                  | 0             |
| Primitive Road – Limited to Authorized Users     | 0                  | 0             |
| Primitive Road – Limited (Seasonal & Authorized) | 0                  | 0             |
| Trail – Limited (OHV Width)                      | 0                  | 0             |
| Trail – Limited (Non-Mechanized)                 | 0                  | 0             |
| <b>Total</b>                                     | <b>1913</b>        | <b>964.14</b> |



# Planning Process

- Route Inventory 2012-2017
- Public Review of Route Inventory 2016
- ID Team Route by Route Designations
- Public Review of Route Designations and Scoping Alternatives 2017
- Draft EA Developed 2019
- Public Review of Draft EA
- Final EA, FONSI and DR 2022





# Community Engagement

- Assistance agreement with Craig Chamber of Commerce to focus on Recreation Area Management Plans for South Sand Wash and Little Yampa Canyon Special Recreation Management Areas
  - Planning set for 2022 in South Sand Wash
- Development of the Northwest Colorado Outdoor Coalition in junction with CPW's Partnership in the Outdoors Program
- Development of a Memorandum of Understanding between partners in Routt County to assist with oversight and maintenance of the Sarvis Cabin



Craig Chamber of Commerce, Moffat County, and the Bureau of Land Management are kicking off a process to complete a Recreation Area Management Plan and associated Environmental Assessment for the South Sand Wash OHV Area.

The process for the Plan for the South Sand Wash Open OHV Area is one that fully involves the entire community to define measurable and realistic implementation strategies to achieve the vision.

### Project Goals

- Enhancing recreation experiences and setting the stage for new recreational amenities such as shelters and staging areas
- Promoting economic development and creating partnerships for funding
- Providing increased wayfinding and interpretation opportunities
- Highlighting our renowned natural landscape and protecting and restoring key areas
- Partnering with community to support a variety of activities and events

### Schedule & Input Opportunities

- Public Scoping  
Winter 2022
- Draft Alternatives and Outreach  
Spring 2022
- Draft RAMP/EA and Outreach  
Spring - Summer 2022
- Final Available  
Late Summer 2022

### Project Location



### Who's Listening?

Reach out to the project management team:

Whit Patterson, BLM LSFO Outdoor Recreation Planner, [wpatterson@blm.gov](mailto:wpatterson@blm.gov)

Erin Bibeau, Logan Simpson, Consultant Project Manager, [ebibeau@logansimpson.com](mailto:ebibeau@logansimpson.com)





# Lands with Wilderness Character Inventory Review-

- Table-top exercise February 8<sup>th</sup>-9<sup>th</sup>
- Inventories completed initially in 1979 and 2012-2013 identified 55 units as having wilderness character
- Stakeholders, partners and county representatives will observe and provide data

