

SPRING BASIN

BLM
Prineville District Office



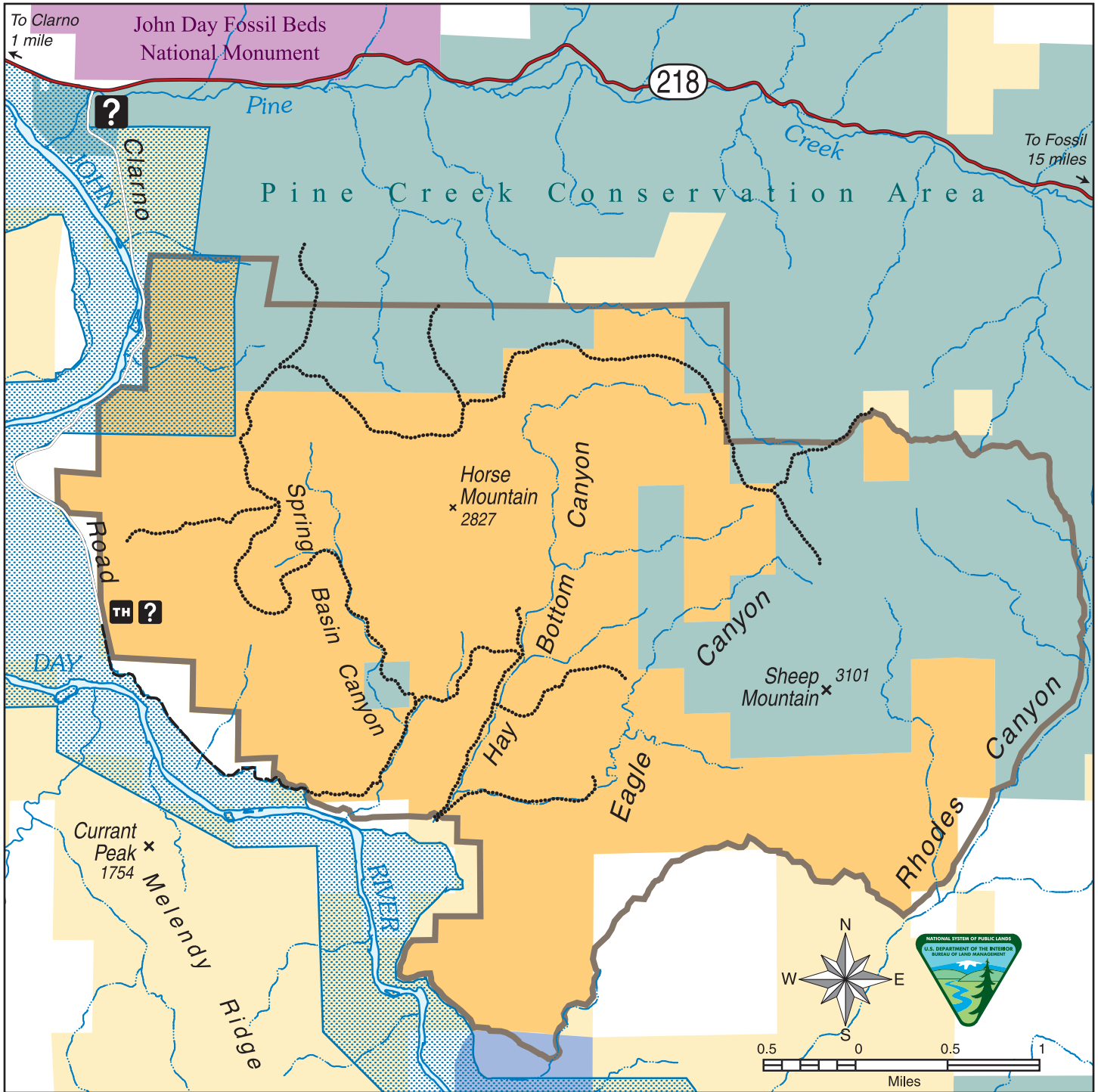
Designated as a wilderness in 2009, the Spring Basin Wilderness area encompasses 6,378 acres of stunning scenery. Numerous vista points give the visitor a sweeping view of the John Day River valley and solitude is provided by the remote canyons and vegetative diversity. These highly scenic settings set the stage for outstanding opportunities for recreation activities such as photography, hiking, and nature study.

This area provides for a unique combination of ecosystems, including: Palouse grassland province/wheatgrass, bluegrass, and sagebrush steppe. At present, there are no similar wilderness areas containing both of these ecosystems with this type of biological diversity. Most portions of the Spring Basin area appear in a natural condition and are primarily affected by the forces of nature.

A closer look around will reveal a huge variety of wildlife species including mule deer, chukar, golden eagles, prairie falcons, bobcats, California quail, meadowlarks, and mountain bluebirds. Our friend, the northern bald eagle, is also an occasional winter resident.



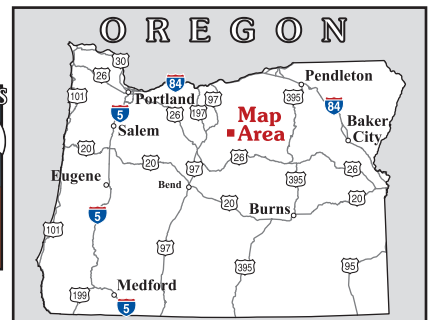
SPRING BASIN WILDERNESS



LEGEND

- | | | | |
|--|--------------------|--|--------------------------------------|
| | State Highway | | Spring Basin Wilderness Boundary |
| | Road | | Spring Basin Wilderness |
| | Non-Motorized Road | | Other Bureau of Land Management |
| | Trail | | Federal Wild & Scenic River Corridor |
| | Information | | Confederated Tribes of Warm Springs |
| | Trailhead | | National Park Service |
| | | | State |
| | | | Private |

Surface management and land ownership is subject to ongoing change. Contact the BLM Prineville District office for further information.



No warranty is made by the Bureau of Land Management as to the accuracy, reliability, or completeness of these data for individual or aggregate use with other data. Original data were compiled from various sources. This information may not meet National Map Accuracy Standards. This product was developed through digital means and may be updated without notification.

M13-12-03