

Wilderness Inventory Unit Index of Documents
Wroten OR-036-060, 11 total pages

Page 1: Index Cover Sheet

[Page 2: Form 1 – Documentation of BLM Wilderness Inventory: Findings on Record](#)

[Page 5: Form 2 – Documentation of Current Wilderness Inventory Conditions](#)

[Page 9: Form 2 – Summary of Findings and Conclusion](#)

[Page 10: Wilderness Characteristics Overview–Wroten OR-036-060 Map 1 of 2](#)

[Page 11: Wilderness Characteristics-Land Treatments-Wroten OR-036-060 Map 2 of 2](#)

**Prepared by:
U.S. Department of the Interior
Bureau of Land Management
Vale District Office
100 Oregon Street
Vale, Oregon 97918**



H-6300-1-WILDERNESS INVENTORY MAINTENANCE IN BLM OREGON/WASHINGTON

APPENDIX B – INVENTORY AREA EVALUATION

Evaluation of Current Conditions:

- 1) Document and review the existing BLM wilderness inventory findings on file, if available, regarding the presence or absence of individual wilderness characteristics, using Form 1, below.
- 2) Consider relevant information regarding current conditions available in the office to identify and describe any changes to the existing information (use interdisciplinary (ID) team knowledge, aerial photographs, field observations, maps, etc.), and document your findings on Form 2, below.

When Citizen Information has been submitted regarding wilderness characteristics, document the submitted materials including: date of Submission; Name of District(s) and Field Office(s) Affected; Type of material Submitted (e.g. narrative, map, photos). Evaluate any submitted citizen information regarding the validity of proposed boundaries of the unit(s), the existence of roads and other boundary features, the size of the unit(s), and the presence or absence of wilderness characteristics based on relevant information available in the office (prior BLM inventories, ID team knowledge, aerial photographs, field observations, maps, etc.)

Conduct field reviews as necessary to verify information and to ascertain current conditions. Reach conclusions on current conditions including boundaries, size of areas and presence or absence of wilderness characteristics. Fully explain the basis for each conclusion on form 2, including any critical differences between BLM and citizen information.

Document your findings regarding current conditions for each inventoried area. Describe how the present conditions are similar to, or have changed from, the conditions documented in the original wilderness inventory. Document your findings on Form 2 for each inventory area. Cite to or attach data considered, including photographs, maps, GIS layers, field trip notes, project files, *etc.*

Year: 2011 **Unit Number/Name:** OR-036-060--Wroten

**FORM 1 -- DOCUMENTATION OF BLM WILDERNESS INVENTORY
FINDINGS ON RECORD**

1. Is there existing BLM wilderness inventory information on all or part of this area?

Yes No (If yes, and if more than one unit is within the area, list the names of those units.):

A.) Inventory Source(s) -- (X) Denotes all applicable BLM Inventory files, printed maps, or published BLM Decision documents with information pertaining to this unit.

Wilderness Inventories

- (X) 1978 – BLM Wilderness Inventory Units 3-131 of OR-03-10-08 Wroten; OR-03-10-02 Sheep; Partial of OR-03-10-03 Ditch; OR-03-10-09 Pot; and OR-03-10-13 Flat (unpublished BLM documents stored in Vale District case files)
- (X) April 1979 – *Wilderness -- Proposed Initial Inventory – Roadless Areas and Islands Which Clearly Do Not have Wilderness Characteristics, Oregon and Washington*

Wilderness Decision Documents

- (X) August 1979 – *Wilderness Review – Initial Inventory, Final Decision on Public Lands Obviously Lacking Wilderness Characteristics and Announcement of Public Lands to be Intensively Inventoried for Wilderness Characteristics, Oregon and Washington* (green document)
- () October 1979 – *Wilderness Review – Intensive Inventory - Oregon, Proposed Decision on the Intensive Wilderness Inventory of Selected Areas* (grey document).
- () March 1980 – *Wilderness Review – Intensive Inventory; Final Decisions on 30 Selected Units in Southeast Oregon and Proposed Decisions on Other Intensively Inventoried Units in Oregon and Washington* (orange document)
- () November 1980 - *Wilderness Inventory – Oregon and Washington, Final Intensive Inventory Decisions* (brown document)
- () November 1981 *Stateline Intensive Wilderness Inventory Final Decision, Oregon, Idaho, Nevada, Utah* (tan document).

B.) Inventory Unit Name(s)/Number(s)

BLM 3-131 of OR-03-10-08 Wroten; OR-03-10-02 Sheep; Partial of OR-03-10-03 Ditch; OR-03-10-09 Pot; and OR-03-10-13 Flat

C.) Map Name(s)/Number(s)

- Final Decision – Initial Wilderness Inventory Map, August 1979, Oregon
- Proposed Decision -- Intensive Wilderness Inventory of Selected Areas Map, October 1979, Oregon
- Intensive Wilderness Inventory Map, March 1980, Oregon
- Intensive Wilderness Inventory --Final Decisions Map, November 1980, Oregon.
- November, 1981 *Stateline Intensive Wilderness Inventory Final Decision, Oregon, Idaho, Nevada, Utah* (tan document).

D.) BLM District(s)/Field Office(s)

Vale District Office

Jordan Field Office

2. BLM Inventory Findings on Record

(Existing inventory information regarding wilderness characteristics (if more than one BLM inventory unit is associated with the area, list each unit and answer each question individually for each inventory unit):

Inventory Source: See above.

Unit# / Name	Size (historic acres)	Natural Condition? Y/N	Outstanding Solitude? Y/N	Outstanding Primitive & Unconfined Recreation? Y/N	Supplemental Values? Y/N
3-131, OR-03-10-08 Wroten	5,340	N	*	*	*
OR-03-10-02 Sheep	1,260	*	*	*	*
Partial of OR-03-10-03 Ditch	1,000	*	*	*	*
OR-03-10-09 Pot	2,280	*	*	*	*
OR-03-10-13 Flat	1,120	*	*	*	*
TOTAL	11,370				

*-- These criteria were not specifically addressed in the inventory of this unit.

H-6300-1-WILDERNESS INVENTORY MAINTENANCE IN BLM OREGON/WASHINGTON

APPENDIX B – INVENTORY AREA EVALUATION

Evaluation of Current Conditions:

- 1) Document and review the existing BLM wilderness inventory findings on file, if available, regarding the presence or absence of individual wilderness characteristics, using Form 1, below.
- 2) Consider relevant information regarding current conditions available in the office to identify and describe any changes to the existing information (use interdisciplinary (ID) team knowledge, aerial photographs, field observations, maps, etc.), and document your findings on Form 2, below.

When Citizen Information has been submitted regarding wilderness characteristics, document the submitted materials including: date of Submission; Name of District(s) and Field Office(s) Affected; Type of material Submitted (e.g. narrative, map, and photos). Evaluate any submitted citizen information regarding the validity of proposed boundaries of the unit(s), the existence of roads and other boundary features, the size of the unit(s), and the presence or absence of wilderness characteristics based on relevant information available in the office (prior BLM inventories, ID team knowledge, aerial photographs, field observations, maps, etc.)

Conduct field reviews as necessary to verify information and to ascertain current conditions. Reach conclusions on current conditions including boundaries, size of areas and presence or absence of wilderness characteristics. Fully explain the basis for each conclusion on form 2, including any critical differences between BLM and citizen information.

Document your findings regarding current conditions for each inventoried area. Describe how the present conditions are similar to, or have changed from, the conditions documented in the original wilderness inventory. Document your findings on Form 2 for each inventory area. Cite to or attach data considered, including photographs, maps, GIS layers, field trip notes, project files, *etc.*

FORM 2 -- DOCUMENTATION OF CURRENT WILDERNESS INVENTORY CONDITIONS

Unit Number/Name: OR-036-060—Wroten

Description of Current Conditions: [Include land ownership, location, topography, vegetation features and summary of major human uses/activities.]

1. Is the unit of sufficient size?

Yes X No

Description: Refer to this inventory unit's associated Map 1 for BLM's Unit OR-036-060 location. The boundary of the 13,723 acre unit includes original 1970's inventory Unit 3-131 and many of the surrounding area original inventory units that were excluded from further intensive inventory because of them not meeting the size criteria. Since the date of the original inventory route usage throughout BLM Unit OR-036-060 has changed. BLM has determined that many of the boundary roads around the various units identified in the 1970's inventory are now reclassified as motorized primitive trails (MPTs) because the routes no longer met the definition of a road for inventory purposes. Reasons why these original boundary roads have become MPTs range from minimal or no maintenance conducted on them over the years, or a change of travel on user preferred routes by ranchers, hunters, and recreationist, or increased travel to new livestock water projects such as reservoirs and pipelines, to pasture fence reconfiguration and/or a change in livestock grazing season-of-use that alter how routes were used previously by ranchers and BLM staff for livestock administration. Acreage for BLM Unit OR-036-060 in Form 2 is calculated from BLM GIS information. BLM Unit OR-036-060 is bounded on its north side by an un-numbered BLM Road and private land parcels, on its east side by County Road 808, on its southeast side by County Road 806, a private land parcel, and a short segment of an un-number road, on its southwest side by BLM Road 6369-0-00, and on its northwest side by BLM Road 036-RT16. Totally within and surrounded by BLM Unit OR-036-060 are two parcels; one a 640 acre private parcel; and two a 60 acre mineral material site withdrawal right-of-way. The natural-surfaced boundary roads receive mechanical maintenance as needed to keep them passable on a regular and continuous (seasonal) basis.

2. Is the unit in a natural condition?

Yes No X N/A

Description: Given its size relative to the evidence of man-made developments, BLM's Unit OR-036-060 appears to be affected not primarily by the forces of nature but with the imprint of humans that is substantially noticeable to the average visitor. Most of the unit is dominated by a group of moderately sized hills that are highly dissected by small drainages of Cantor, Antelope, and Sheep Spring creeks in the central and southern

portions of the unit. The elevated central area of the unit slopes mostly to the north and west where the landscape transitions to fewer drainage channels dissecting the relatively flat terrain. Both Cantor and Antelope creeks flow into Antelope Reservoir that spills into Jordan Creek while Sheep Spring Creek flows to the northwest into Jordan Creek. Elevation within the unit ranges from 4,380 feet to 5,092 feet, with the upper elevations located mostly in the unit's south and central area while the unit's lower elevations are located along the north and west boundaries. Sparsely populated vegetation throughout the unit consists predominately of big and low sagebrush with both native and non-native grass species.

Refer to this inventory unit's associated Map 1 and Map 2 for its human developments in BLM Unit OR-036-060. Developments within the unit include 36.3 miles of 30 MPTs, one pipeline system with 17.7 miles of pipelines, 18 troughs and 2 storage tanks, 7 earthen reservoirs, one wildlife guzzler, one reservoir enclosure, one water well enclosure, one mineral material site, one developed spring, 2 water wells, 20.1 miles of fence line, and 14 vegetation manipulation treatments conducted from 1955 through 1986. The vegetation treatments were conducted on approximately sixty percent of the unit over a thirty-one year period. A large portion of the sagebrush component along the western portion of the unit has been reduced by the various vegetation treatments conducted during this period, although to the average visitor, the vegetation treatments conducted in the unit presently appear as a whole, individually and collectively, mostly indistinguishable across the landscape. Because of the numerous man-made-developments scattered throughout the unit and the location of MPTs that dissect the landscape the unit does not appear affected primarily by the forces of nature.

3. Does the unit have outstanding opportunities for solitude?

Yes _____ No N/A _____

Description: BLM concludes that BLM Unit OR-036-060 does not provide outstanding opportunities for solitude. Much of the character of the inventory unit has not changed since the 1970's. The unit is mostly an irregular rectangle in shape. The width of the unit averages about four miles wide while the length of the unit along its northwest boundary is about four miles, its south east boundary about six miles, while the length along the unit's central axis is about seven miles.

Diversity in landscape relief throughout the unit is limited to mostly flat to gentle sloping terrain in the northern and western portions of the unit with the southeast, south, and southwest central areas containing rolling ridges and hill tops that are dissected by numerous small headwater drainages of Cantor, Antelope, and Sheep Spring creeks. Elevation rises in the unit by 700 feet from the northwestern edge upward to the south central high point located about one mile northwest of the southeast boundary and provides the only diverse area that one might experience any opportunities of solitude. The unit's diversity in vegetation that is comprised of both low and big sage brush and both native and non-native grasses across the landscape does not provide any extensive

vegetative screening opportunities for solitude or a sense of isolation in a large portion of the unit. The western one-third area of the unit lacks a large portion of its sagebrush vegetation screening component when it was reduced by a prescribed burn in 1986 and by two plow and disks vegetation treatments conducted in 1961 and 1967. The locations of MPTs that dissect the unit in relation to the unit's boundary roads limit the extent of available areas that one could experience opportunities for solitude. As a result of the area's size relative to its shape, the absence of large diverse areas, the location of roads and MPTs, the absence of vegetative screening, and the lack of diversity in relief, there is no outstanding opportunities for solitude within the unit.

4. Does the unit have outstanding opportunities for primitive and unconfined recreation?

Yes _____ No X N/A _____

Description: BLM concludes that BLM Unit OR-036-060 does not provide outstanding opportunities for primitive and unconfined recreation. The most dominate dispersed recreation activities within the unit would be hiking throughout the south central rolling hills or hunting of game species (primarily deer, chukar and antelope). Other than nearly flat north, northeast and western terrain that exists over almost sixty percent of the unit there are no unique or special features associated with the unit that would attract a visitor who is seeking a primitive and unconfined recreational experience. Recreational pursuits within the area, individually or collectively, are not outstanding in character or nature for the unit.

5. Does the unit have supplemental values?

Yes X No _____ N/A _____

Description: BLM has documented one sage grouse lek within BLM Unit OR-036-060. The bird is a BLM special status animal species.

Summary of Findings and Conclusion

Unit Name and Number: OR-036-060--Wroten

Summary Results of Analysis:

- 1. Does the area meet any of the size requirements? Yes No
- 2. Does the area appear to be natural? Yes No
- 3. Does the area offer outstanding opportunities for solitude or a primitive and unconfined type of recreation? Yes No NA
- 4. Does the area have supplemental values? Yes No NA

Conclusion -- check one:

The area, or a portion of the area, has wilderness character.

The area does not have wilderness character.

Prepared by: Jack Wenderoth 11-16-11
Jack Wenderoth, Planning Contractor

Team Members:

<u>Keri Fredrick</u>	11-16-11
Keri Fredrick, Outdoor Recreation Planner	Date
<u>Aimee Huff</u>	11/16/2011
Aimee Huff, Rangeland Management Specialist	Date
<u>Eian Ray</u>	11-16-11
Eian Ray, GIS Specialist, Contractor	Date
<u>Garth Ross</u>	11/14/2011
Garth Ross, Wildlife Biologist	Date
<u>Brent Grasty</u>	11/16/11
Brent Grasty, GIS Coordinator	Date

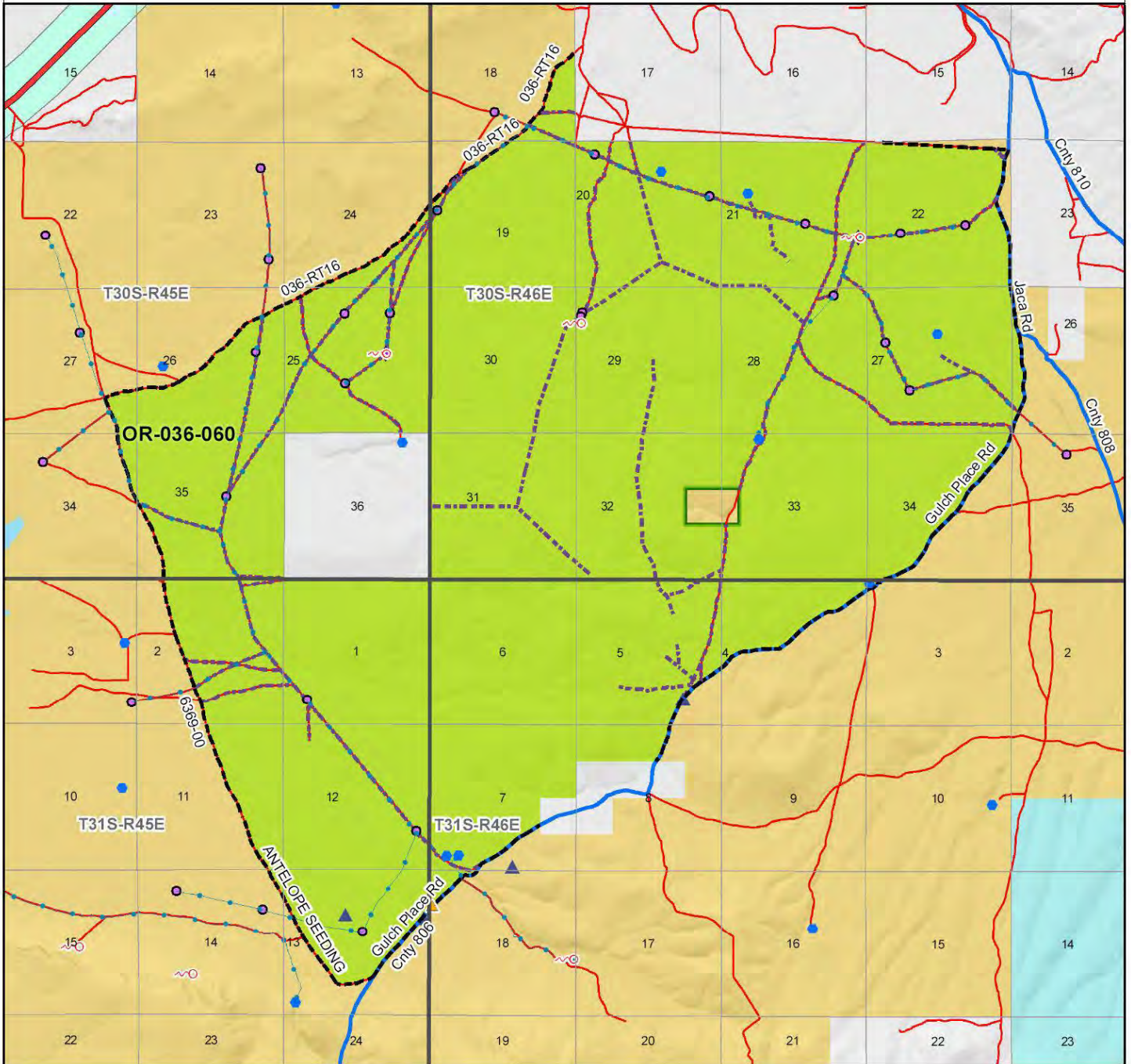
Approved by:

Carolyn Freeborn 11/28/2011
Carolyn Freeborn, Jordan Resource Area Field Manager Date

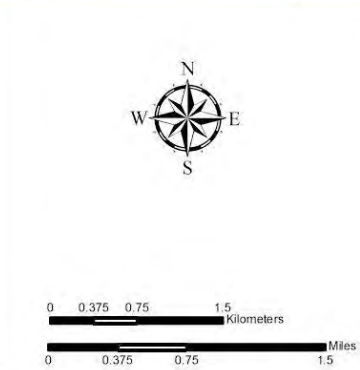
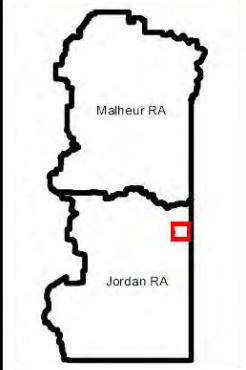
This form documents information that constitutes an inventory finding on wilderness characteristics. It does not represent a formal land use allocation or a final agency decision subject to administrative remedies under either 43 CFR parts 4 or 1610.5-2.

Wilderness Characteristics - Overview

Wroten - OR-036-060 - Map 1 of 2



- Legend**
- Developed Spring
 - Wildlife Guzzler
 - Earthen Reservoir
 - Pipeline
 - Trough
 - Fence
 - Storage Tank
 - Surface Mining Disturbance
 - Sage Grouse Lek
 - Special Status Plant
 - BLM Wild Char Inventory Unit
 - Wilderness Study Area
 - Mineral Material Site
 - Road/Utility Right-of-Way
 - Major Water Body
- Route Types - BLM Determination**
- Boundary Road
 - Motorized Primitive Trail (MPT)
 - Discontinued Use
- Routes - Outside Wild Char Unit**
- County
 - Major Highway
 - BLM Numbered & Other Routes
- Land Ownership**
- Bureau of Land Management
 - State
 - Private
 - Other Federal Land



U.S. DEPARTMENT OF THE INTERIOR
BUREAU OF LAND MANAGEMENT

VALE DISTRICT
October 19, 2011

No warranty is made by the Bureau of Land Management as to the accuracy, reliability, or completeness of these data for individual or aggregate use with other data. Original data were compiled from various sources. This information may not meet National Map Accuracy Standards. This product was developed through digital means and may be updated without notification.

--FINAL--

