

Wilderness Inventory Unit Index of Documents
Willow Spring OR-034-065, 15 total pages

Page 1: Index Cover Sheet

[Page 2: Form 1 – Documentation of BLM Wilderness Inventory: Findings on Record](#)

[Page 5: Form 2 – Documentation of Current Wilderness Inventory Conditions](#)

[Page 9: Form 2 – Summary of Findings and Conclusion](#)

[Page 10: Wilderness Characteristics Overview – Willow Spring OR-034-065 Map 1 of 2](#)

[Page 11: Wilderness Characteristics-Land Treatments-Willow Spring OR-034-65 Map 2 of 2](#)

[Page 12: Wilderness Characteristics – BLM Photo Points – Willow Spring Map & Log](#)

[Page 13: OR-034-065 Willow Spring BLM Photos](#)

Prepared by:
U.S. Department of the Interior
Bureau of Land Management
Vale District Office
100 Oregon Street
Vale, Oregon 97918



H-6300-1-WILDERNESS INVENTORY MAINTENANCE IN BLM OREGON/WASHINGTON

APPENDIX B – INVENTORY AREA EVALUATION

Evaluation of Current Conditions:

- 1) Document and review the existing BLM wilderness inventory findings on file, if available, regarding the presence or absence of individual wilderness characteristics, using Form 1, below.
- 2) Consider relevant information regarding current conditions available in the office to identify and describe any changes to the existing information (use interdisciplinary (ID) team knowledge, aerial photographs, field observations, maps, etc.), and document your findings on Form 2, below.

When Citizen Information has been submitted regarding wilderness characteristics, document the submitted materials including: date of Submission; Name of District(s) and Field Office(s) Affected; Type of material Submitted (e.g. narrative, map, photo). Evaluate any submitted citizen information regarding the validity of proposed boundaries of the unit(s), the existence of roads and other boundary features, the size of the unit(s), and the presence or absence of wilderness characteristics based on relevant information available in the office (prior BLM inventories, ID team knowledge, aerial photographs, field observations, maps, etc.)

Conduct field reviews as necessary to verify information and to ascertain current conditions. Reach conclusions on current conditions including boundaries, size of areas and presence or absence of wilderness characteristics. Fully explain the basis for each conclusion on form 2, including any critical differences between BLM and citizen information.

Document your findings regarding current conditions for each inventoried area. Describe how the present conditions are similar to, or have changed from, the conditions documented in the original wilderness inventory. Document your findings on Form 2 for each inventory area. Cite to or attach data considered, including photographs, maps, GIS layers, field trip notes, project files, *etc.*

Year: 2010 **Unit Number/Name:** OR-034-065 -- Willow Spring

**FORM 1 -- DOCUMENTATION OF BLM WILDERNESS INVENTORY
FINDINGS ON RECORD**

1. Is there existing BLM wilderness inventory information on all or part of this area?

Yes No (If yes, and if more than one unit is within the area, list the names of those units.):

A.) Inventory Source(s) -- (X) Denotes all applicable BLM Inventory files, printed maps, or published BLM Decision documents with information pertaining to this unit.

Wilderness Inventories

- (X) 1978 – BLM Wilderness Inventory Units 3-11 of OR-03-02-11 Willow Spring (unpublished BLM documents in case files)
- (X) April 1979 – *Wilderness -- Proposed Initial Inventory – Roadless Areas and Islands Which Clearly Do Not have Wilderness Characteristics, Oregon and Washington*

Wilderness Decision Documents

- (X) August 1979 – *Wilderness Review – Initial Inventory, Final Decision on Public Lands Obviously Lacking Wilderness Characteristics and Announcement of Public Lands to be Intensively Inventoried for Wilderness Characteristics, Oregon and Washington* (green document)
- () October 1979 – *Wilderness Review – Intensive Inventory - Oregon, Proposed Decision on the Intensive Wilderness Inventory of Selected Areas* (grey document).
- () March 1980 – *Wilderness Review – Intensive Inventory; Final Decisions on 30 Selected Units in Southeast Oregon and Proposed Decisions on Other Intensively Inventoried Units in Oregon and Washington* (orange document)
- () November 1980 - *Wilderness Inventory – Oregon and Washington, Final Intensive Inventory Decisions* (brown document)
- () November 1981 *Stateline Intensive Wilderness Inventory Final Decision, Oregon, Idaho, Nevada, Utah* (tan document).

B.) Inventory Unit Name(s)/Number(s)

BLM 3-11 of OR-03-02-11 Willow Spring

C.) Map Name(s)/Number(s)

- () Final Decision – Initial Wilderness Inventory Map, August 1979, Oregon
- () Proposed Decision -- Intensive Wilderness Inventory of Selected Areas Map, October 1979, Oregon
- () Intensive Wilderness Inventory Map, March 1980, Oregon
- () Intensive Wilderness Inventory --Final Decisions Map, November 1980, Oregon.
- () November, 1981 *Stateline Intensive Wilderness Inventory Final Decision, Oregon, Idaho, Nevada, Utah* (tan document).

D.) BLM District(s)/Field Office(s)

Vale District Office/ Malheur Field Office

2. BLM Inventory Findings on Record

(Existing inventory information regarding wilderness characteristics (if more than one BLM inventory unit is associated with the area, list each unit and answer each question individually for each inventory unit):

Inventory Source: See above.

Unit#/ Name	Size (historic acres)	Natural Condition? Y/N	Outstanding Solitude? Y/N	Outstanding Primitive & Unconfined Recreation? Y/N	Supplemental Values? Y/N
3-11 of OR-03-02-11 Willow Spring	8,320	N	*	*	*
TOTAL	8,320				

* -- These criteria were not specifically addressed during the inventory of this unit, since it was determined to not be in a natural condition.

H-6300-1-WILDERNESS INVENTORY MAINTENANCE IN BLM OREGON/WASHINGTON

APPENDIX B – INVENTORY AREA EVALUATION

Evaluation of Current Conditions:

- 1) Document and review the existing BLM wilderness inventory findings on file, if available, regarding the presence or absence of individual wilderness characteristics, using Form 1, below.
- 2) Consider relevant information regarding current conditions available in the office to identify and describe any changes to the existing information (use interdisciplinary (ID) team knowledge, aerial photographs, field observations, maps, etc.), and document your findings on Form 2, below.

When Citizen Information has been submitted regarding wilderness characteristics, document the submitted materials including: date of Submission; Name of District(s) and Field Office(s) Affected; Type of material Submitted (e.g. narrative, map, photo). Evaluate any submitted citizen information regarding the validity of proposed boundaries of the unit(s), the existence of roads and other boundary features, the size of the unit(s), and the presence or absence of wilderness characteristics based on relevant information available in the office (prior BLM inventories, ID team knowledge, aerial photographs, field observations, maps, etc.)

Conduct field reviews as necessary to verify information and to ascertain current conditions. Reach conclusions on current conditions including boundaries, size of areas and presence or absence of wilderness characteristics. Fully explain the basis for each conclusion on form 2, including any critical differences between BLM and citizen information.

Document your findings regarding current conditions for each inventoried area. Describe how the present conditions are similar to, or have changed from, the conditions documented in the original wilderness inventory. Document your findings on Form 2 for each inventory area. Cite to or attach data considered, including photographs, maps, GIS layers, field trip notes, project files, *etc.*

FORM 2 -- DOCUMENTATION OF CURRENT WILDERNESS INVENTORY CONDITIONS

Unit Number/Name: OR-034-065 – Willow Spring

NOTE: For clarification, the following is provided. This BLM inventory unit is not within Oregon Natural Desert Association's (ONDA) 2004 proposed WSAs submission to Vale District. Within that submission, there is no specific ONDA proposed WSA which includes any of this inventory unit. That said, Vale District does have a separate electronic map developed by ONDA which includes this BLM inventory unit as part of a map-labeled "Little Black Canyon Proposed WSA"; however, the official 2004 ONDA "Little Black Canyon Proposed WSA" – including its map and all supporting text and photographs -- submitted to Vale District does not include any of this BLM unit. No other public-generated information associated with wilderness characteristics which would affect this BLM inventory unit has been submitted to Vale District.

Description of Current Conditions: [Include land ownership, location, topography, vegetation features and summary of major human uses/activities.]

1. Is the unit of sufficient size?

Yes X No

Description: Refer to this inventory unit's associated Map 1 for location. This OR-034-065 inventory unit of 12,006 public land acres is larger than BLM's late 1970's 3-11 inventory unit (8,320 acres) because what then was determined to be a road has since that time changed status to a motorized primitive trail (MPT, route 034-RT8) due to no known mechanical maintenance performed and BLM not intending to not conduct such maintenance of the route in the future. As a result, some public lands to the west of 034-RT8 MPT are included in this present inventory unit.

The unit's boundaries are a combination of county road 805 on its east side, county road 601 and private lands on its west and north sides, and BLM roads 7358-00, 73580-AO and a designated mineral material site on its south side. An 80-acre private inholding is also a boundary feature of the unit. The boundary roads receive mechanical maintenance as needed to as required to allow for relatively regular and continuous use. BLM has a Photo Points Map/Log and associated photos of segments of 7358-00 and 034-RT8, located in this unit's inventory files.

2. Is the unit in a natural condition?Yes _____ No N/A _____

Description: The unit consists predominately of rolling hills with Willow Spring Creek draining west to east through the generally central area of the unit. In the unit's northwest sector, a short approximate half mile of Cottonwood Creek traverses public land. Elevations range from approximately 2,760 to 3,920 feet. Dominate vegetation is sage brush with a mixture of both native and nonnative grasses.

Refer to this unit's associated Map 1 and Map 2 for human imprints. They include 17.8 miles of rangeland fence, 15.2 miles of 10 MPTs, 4.9 branched miles of a buried pipeline system with one storage tank atop a ridge of Willow Spring Creek and 14 associated water troughs, 3 earthen reservoirs and 2 developed springs. There remains no visual contrasting evidence of four chemical spray vegetation projects which occurred between 1967 and 1983, or of four disc-drilled vegetative seedings of nonnative species in 1965 and 1967. The additional public lands of this unit since the late 1970's inventory includes several miles of the rangeland fence and 4 of the 10 MPTs (including the 034-RT8 MPT which fully traverses the unit south-north). Although with increased acreage since the late 1970's, the close proximity of many of the unit's developments to each other and the extensive distribution of the developments throughout OR-034-065 results in the unit not appearing to being affected primarily by the forces of nature with the imprints of mankind being substantially unnoticeable to the average visitor.

3. Does the unit have outstanding opportunities for solitude?Yes _____ No N/A _____

Description: The shape of the added area of the unit since the late 1970's is largely disrupted by the combination of an extension of private lands as an element of the unit's outer boundary and the 80 acre private inholding. This circumstance results also in the unit's northwest sector having a very narrow extension which ranges from about three quarters of a mile to less than a quarter mile wide over a length of approximately 3 miles. This sector of the unit, due solely to its configuration relative to its topography, provides no opportunities for outstanding solitude. The remainder of the unit ranges from about 2.5 to 5.5 miles in length by 1.3 to 4 miles in width; it includes that segment of Willow Spring Creek which traverses the unit, located generally central to it. While this area of the unit offers settings where a visitor may experience a sense of being isolated, the topography of it -- in combination with its insufficient vegetation height or density to aid in screening -- is not adequate to support settings that would provide for outstanding opportunities for solitude.

4. Does the unit have outstanding opportunities for primitive and unconfined recreation?

Yes _____ No X N/A _____

Description: The primary primitive and unconfined recreation opportunities include hunting of common game species (primarily deer and chukar) and associated day hiking. There are no special or unique features or attractions of the unit which would more so attract visitors for primitive and unconfined recreation activities. Individually or collectively the activities occurring and available within the unit do not constitute or provide outstanding opportunities for primitive and unconfined recreation.

5. Does the unit have supplemental values?

Yes _____ No X N/A _____

Description:

Summary of Findings and Conclusion

Unit Name and Number: OR-034-065 – Willow Spring

Summary Results of Analysis:

- 1. Does the area meet any of the size requirements? Yes No
- 2. Does the area appear to be natural? Yes No
- 3. Does the area offer outstanding opportunities for solitude or a primitive and unconfined type of recreation? Yes No NA
- 4. Does the area have supplemental values? Yes No NA

Conclusion -- check one:


The area, or a portion of the area, has wilderness character.

The area does not have wilderness character.

Prepared by: 
Robert Alward, Wilderness Planner, contractor

Team Members:

<u></u>	12/10/10
Bill Lutzens, Rangeland Management Specialist	Date
<u></u>	12/10/10
Dan Thomas, Range Technician	Date
<u></u>	12/15/10
Gillian Wigglesworth, Botanist	Date
<u></u>	12/14/10
Michelle Caviness, Wildlife Biologist	Date
<u></u>	12-14-10
Eian Ray, GIS Specialist, contractor	Date
<u></u>	12/14/10
Brent Grasty, GIS Coordinator	Date

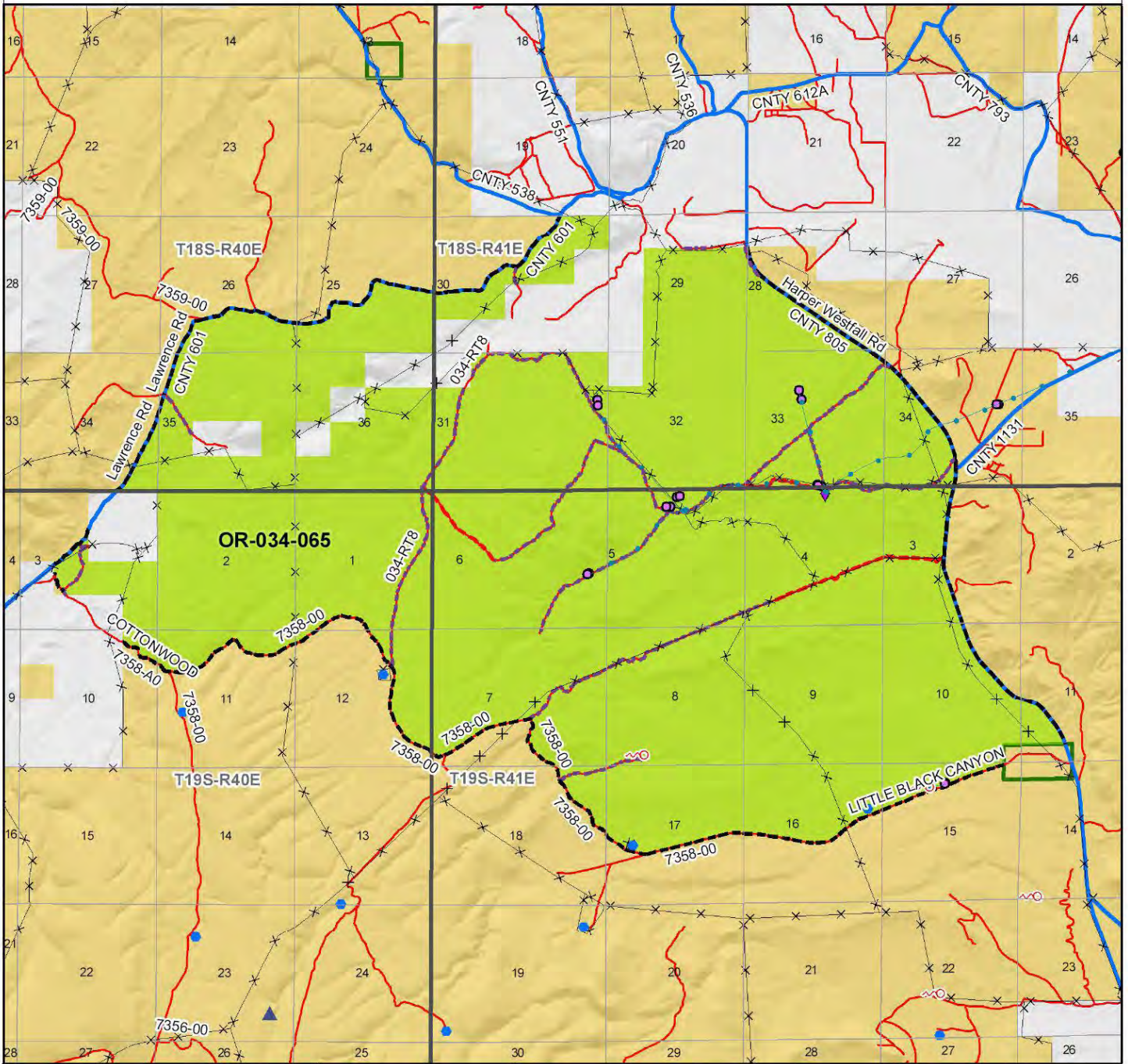
Approved by:

Pat Ryan, Malheur Resource Area Field Manager

12/15/10
Date

This form documents information that constitutes an inventory finding on wilderness characteristics. It does not represent a formal land use allocation or a final agency decision subject to administrative remedies under either 43 CFR parts 4 or 1610.5-2.

Wilderness Characteristics - Overview

Willow Spring - OR-034-065 - Map 1 of 2



Legend

- Developed Spring
- ▲ Wildlife Guzzler
- Earthen Reservoir
- Pipeline
- Trough
- × Fence
- ◆ Storage Tank
- × Surface Mining Disturbance
- ▲ Sage Grouse Lek
- Special Status Plant
- BLM Wild Char Inventory Unit
- Wilderness Study Area
- Mineral Material Site
- Road/Utility Right-of-Way
- Major Water Body

Route Types - BLM Determination

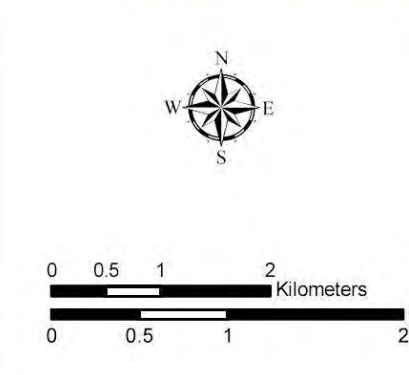
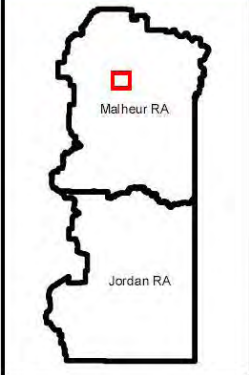
- Boundary Road
- Motorized Primitive Trail (MPT)
- Discontinued Use

Routes - Outside Wild Char Unit

- County
- Major Highway
- BLM Numbered & Other Routes

Land Ownership

- Bureau of Land Management
- State
- Private
- Other Federal Land



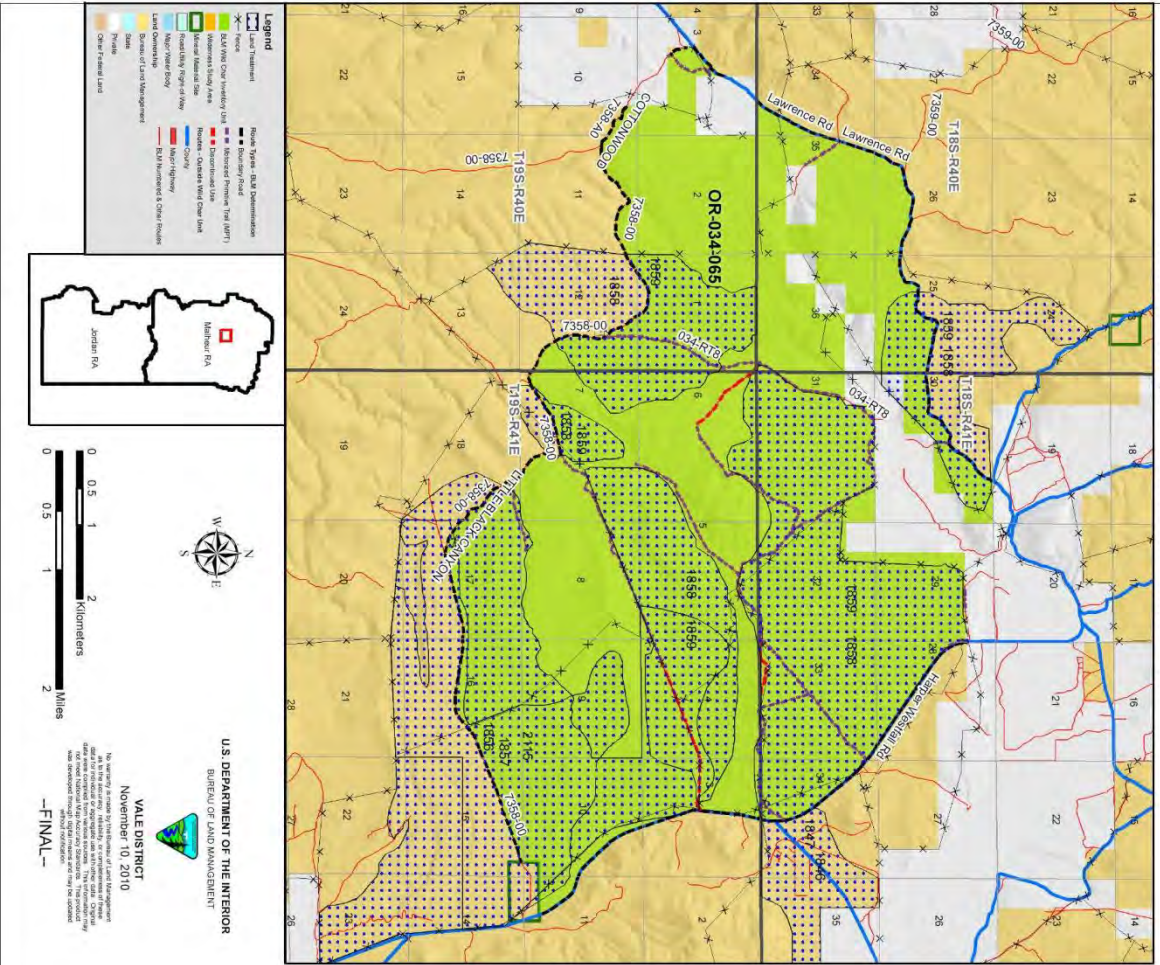
U.S. DEPARTMENT OF THE INTERIOR
BUREAU OF LAND MANAGEMENT

VALE DISTRICT
November 10, 2010

No warranty is made by the Bureau of Land Management as to the accuracy, reliability, or completeness of these data for individual or aggregate use with other data. Original data were compiled from various sources. This information may not meet National Map Accuracy Standards. This product was developed through digital means and may be updated without notification.

--FINAL--

Wilderness Characteristics - Land Treatments
Willow Springs - OR-034-065 - Map 2 of 2

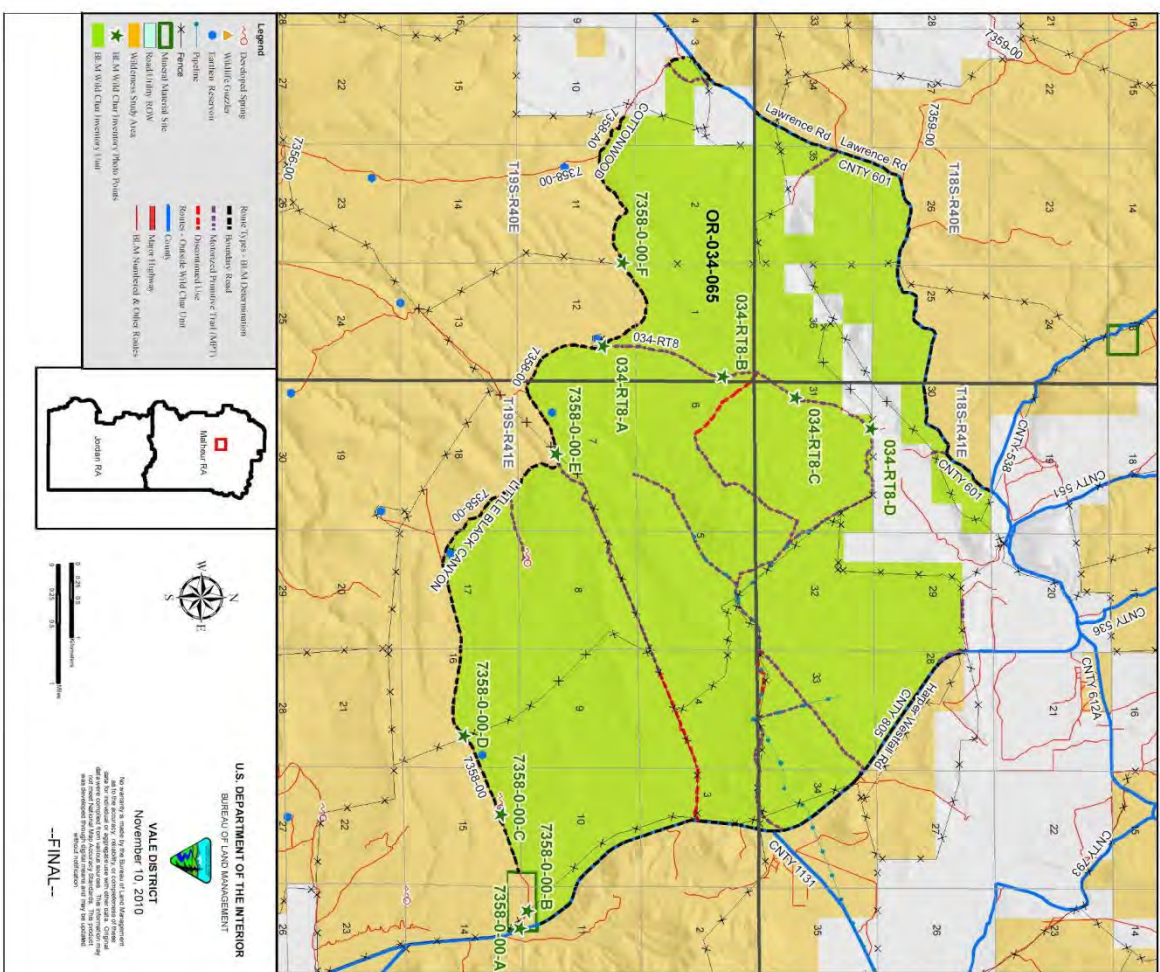


Wilderness Characteristics - Land Treatments
Willow Springs - OR-034-065 - Map 2 of 2

OBJECTID*	NAME	TREATMENT TYPE	SEED GROUP	DATE
1846	BULLY CREEK SEEDING	Chemical Treatment	Not Applicable	1987
1847	BULLY CREEK SEEDING	Drill Seeding	Unknown	1987
1856	WILLOW CREEK SEEDING	Chemical Treatment	Not Applicable	1987
1857	WILLOW CREEK SEEDING	Drill Seeding	Unknown	1987
1858	COTTONWOOD SEEDING	Plow/Disc	Not Applicable	1985
1859	COTTONWOOD SEEDING	Drill Seeding	Unknown	1985
2115	WILLOW CREEK BRUSH CONTROL	Chemical Treatment	Not Applicable	1989

Note: The Land Treatments represented by navy blue dots on the map to the left are labeled with the treatments ObjectIDs listed in the first field of the Land Treatments table shown above. Multiple types of treatments may have been applied to the same area. For example, one treatment area may have been plowed and drill seeded - a record is shown in the table for each type of treatment.

Wilderness Characteristics - BLM Photo Points
Willow Spring - OR-034-065



Wilderness Characteristics - BLM Photo Log
Willow Spring - OR-034-065

PHOTO LOCATION *	DIRECTION	PHOTO_TYPE	PHOTO_DATE	COMMENTS
7358-0-00-A	E	Route	20080825	at highway & route intersection
7358-0-00-A	W	Route	20080825	route from highway
7358-0-00-B	E	Route	20080825	cattleguard
7358-0-00-B	W	Route	20080825	bladed road edge
7358-0-00-B	E	Route	20080825	bladed road edge
7358-0-00-B	W	Route	20080825	bladed road edge
7358-0-00-C	E	Project	20080825	OR-034-065-C-E trough & pipeline
7358-0-00-C	W	Project	20080825	OR-034-065-C-W spring & pipeline
7358-0-00-D	E	Route	20080825	cattleguard
7358-0-00-D	W	Route	20080825	cattleguard
7358-0-00-E	E	Route	20080825	cattleguard
7358-0-00-E	W	Route	20080825	cattleguard
7358-0-00-E	W	Route	20080825	project marker - Willow Creek Cattleguard
034-RT8-A	W	Route	20080825	OR-034-064-A-W spur off route to Allotment 3 Reservoir
034-RT8-A	SE	Route	20080825	route southeast of reservoir back to highway
034-RT8-A	N	Route	20080825	route junction - "Y"
034-RT8-A	N	Route	20080825	beginning of route at "Y"
034-RT8-B	SW	Route	20080825	back down route
034-RT8-B	NE	Route	20080825	forward
034-RT8-B	S	Route	20080825	route surface change
034-RT8-C	S	Route	20080825	route surface change
034-RT8-C	N	Route	20080825	route surface change
034-RT8-D	S	Route	20080825	end route
034-RT8-D	NW	Route	20080825	end route & private gate
7358-0-00-F	E	Route	20080825	cattleguard
7358-0-00-F	W	Route	20080825	cattleguard

Note: The BLM Wild Char PhotoPoints displayed on the map are labeled with their Photo Locations. The BLM Photo Log table shown above lists the photos taken at their respective Photo Locations. Multiple photos may be taken at each Photo Location. Scenery and Project Photo Type pictures have their photo names provided in the Comments field.



034-RT8-A-N.JPG



034-RT8-B-NE.JPG



034-RT8-C-N1.JPG

OR-034-065 Willow Spring Page 1



034-RT8-A-N1.JPG



034-RT8-B-SW.JPG



034-RT8-C-S.JPG



034-RT8-A-SE.JPG



034-RT8-C-N.JPG



034-RT8-D-NW.JPG



034-RT8-D-S.JPG



7358-0-00-A-E.jpg



7358-0-00-A-W.jpg



7358-0-00-B-E.jpg



7358-0-00-B-E1.JPG



7358-0-00-B-W.jpg



7358-0-00-B-W1.JPG



7358-0-00-D-E.JPG



7358-0-00-D-W.JPG



7358-0-00-E-E.JPG



OR-034-065-C-E.JPG

OR-034-065 Willow Spring Page 3



7358-0-00-E-W.JPG



OR-034-065-C-W.JPG



7358-0-00-E-W1.JPG