

Wilderness Inventory Unit Index of Documents  
**Wild Rose Reservoir OR-034-100, 10 total pages**

Page 1: Index Cover Sheet

[Page 2: Form 1 – Documentation of BLM Wilderness Inventory: Findings on Record](#)

[Page 5: Form 2 – Documentation of Current Wilderness Inventory Conditions](#)

[Page 8: Form 2 – Summary of Findings and Conclusion](#)

[Page 9: Wilderness Characteristics Overview – Wild Rose Reservoir OR-034-100 Map 1 of 2](#)

[Page 10: Wilderness Characteristics-Land Treatments-Wild Rose Reservoir OR-034-100 Map 2 of 2](#)

**Prepared by:  
U.S. Department of the Interior  
Bureau of Land Management  
Vale District Office  
100 Oregon Street  
Vale, Oregon 97918**



## **H-6300-1-WILDERNESS INVENTORY MAINTENANCE IN BLM OREGON/WASHINGTON**

### **APPENDIX B – INVENTORY AREA EVALUATION**

#### **Evaluation of Current Conditions:**

- 1) Document and review the existing BLM wilderness inventory findings on file, if available, regarding the presence or absence of individual wilderness characteristics, using Form 1, below.
- 2) Consider relevant information regarding current conditions available in the office to identify and describe any changes to the existing information (use interdisciplinary (ID) team knowledge, aerial photographs, field observations, maps, etc.), and document your findings on Form 2, below.

When Citizen Information has been submitted regarding wilderness characteristics, document the submitted materials including: date of Submission; Name of District(s) and Field Office(s) Affected; Type of material Submitted (e.g. narrative, map, photo). Evaluate any submitted citizen information regarding the validity of proposed boundaries of the unit(s), the existence of roads and other boundary features, the size of the unit(s), and the presence or absence of wilderness characteristics based on relevant information available in the office (prior BLM inventories, ID team knowledge, aerial photographs, field observations, maps, etc.)

Conduct field reviews as necessary to verify information and to ascertain current conditions. Reach conclusions on current conditions including boundaries, size of areas and presence or absence of wilderness characteristics. Fully explain the basis for each conclusion on form 2, including any critical differences between BLM and citizen information.

Document your findings regarding current conditions for each inventoried area. Describe how the present conditions are similar to, or have changed from, the conditions documented in the original wilderness inventory. Document your findings on Form 2 for each inventory area. Cite to or attach data considered, including photographs, maps, GIS layers, field trip notes, project files, *etc.*

**Year:** 2009      **Unit Number/Name:** OR-034-100 — Wild Rose Reservoir

**FORM 1 -- DOCUMENTATION OF BLM WILDERNESS INVENTORY  
FINDINGS ON RECORD**

**1. Is there existing BLM wilderness inventory information on all or part of this area?**

Yes  No  (If yes, and if more than one unit is within the area, list the names of those units.):

**A.) Inventory Source(s) -- (X)** Denotes all applicable BLM Inventory files, printed maps, or published BLM Decision documents with information pertaining to this unit.

**Wilderness Inventories**

- (X) 1978 – BLM Wilderness Inventory Unit OR-03-05-26 Blue Canyon (unpublished BLM document)  
**NOTE:** The late 1970's paperwork for unit OR-03-05-26 cannot be located in district files. A portion of this unit included what became Blue Canyon WSA in 1980.
- ( ) April 1979 – *Wilderness -- Proposed Initial Inventory – Roadless Areas and Islands Which Clearly Do Not have Wilderness Characteristics, Oregon and Washington*

**Wilderness Decision Documents**

- ( ) August 1979 – *Wilderness Review – Initial Inventory, Final Decision on Public Lands Obviously Lacking Wilderness Characteristics and Announcement of Public Lands to be Intensively Inventoried for Wilderness Characteristics, Oregon and Washington* (green document)
- ( ) October 1979 – *Wilderness Review – Intensive Inventory - Oregon, Proposed Decision on the Intensive Wilderness Inventory of Selected Areas* (grey document).
- ( ) March 1980 – *Wilderness Review – Intensive Inventory; Final Decisions on 30 Selected Units in Southeast Oregon and Proposed Decisions on Other Intensively Inventoried Units in Oregon and Washington* (orange document)
- ( ) November 1980 - *Wilderness Inventory – Oregon and Washington, Final Intensive Inventory Decisions* (brown document)
- ( ) November 1981 *Stateline Intensive Wilderness Inventory Final Decision, Oregon, Idaho, Nevada, Utah* (tan document).

**B.) Inventory Unit Name(s)/Number(s)**

BLM OR-03-05-26

**C.) Map Name(s)/Number(s)**

- ( ) Final Decision – Initial Wilderness Inventory Map, August 1979, Oregon
- ( ) Proposed Decision -- Intensive Wilderness Inventory of Selected Areas Map, October 1979, Oregon
- ( ) Intensive Wilderness Inventory Map, March 1980, Oregon
- ( ) Intensive Wilderness Inventory --Final Decisions Map, November 1980, Oregon.
- ( ) November, 1981 *Stateline Intensive Wilderness Inventory Final Decision, Oregon, Idaho, Nevada, Utah* (tan document).

**D.) BLM District(s)/Field Office(s)**

Vale District Office/ Malheur Field Office

**2. BLM Inventory Findings on Record**

(Existing inventory information regarding wilderness characteristics (if more than one BLM inventory unit is associated with the area, list each unit and answer each question individually for each inventory unit):

**Inventory Source:** See above.

Unit#/ Name	Size (historic acres)	Natural Condition? Y/N	Outstanding Solitude? Y/N	Outstanding Primitive & Unconfined Recreation? Y/N	Supplemental Values? Y/N
Partially of OR-03-05-26 Blue Canyon *	26,220*	*	*	*	*
<b>TOTAL</b>	26,220				

\* -- The late 1970's hard copy files for unit OR-03-05-26 cannot be located in district files; thus, determinations for these criteria are unknown. A portion of this unit (12,700 acres) became Blue Canyon WSA in 1980; thus, that portion of the unit met qualifying wilderness characteristics criteria. It may be concluded that the remainder of the unit did not possess wilderness characteristics, but specifically why not cannot be derived without referencing the hard copy file.

## H-6300-1-WILDERNESS INVENTORY MAINTENANCE IN BLM OREGON/WASHINGTON

### APPENDIX B – INVENTORY AREA EVALUATION

#### Evaluation of Current Conditions:

- 1) Document and review the existing BLM wilderness inventory findings on file, if available, regarding the presence or absence of individual wilderness characteristics, using Form 1, below.
- 2) Consider relevant information regarding current conditions available in the office to identify and describe any changes to the existing information (use interdisciplinary (ID) team knowledge, aerial photographs, field observations, maps, etc.), and document your findings on Form 2, below.

When Citizen Information has been submitted regarding wilderness characteristics, document the submitted materials including: date of Submission; Name of District(s) and Field Office(s) Affected; Type of material Submitted (e.g. narrative, map, photo). Evaluate any submitted citizen information regarding the validity of proposed boundaries of the unit(s), the existence of roads and other boundary features, the size of the unit(s), and the presence or absence of wilderness characteristics based on relevant information available in the office (prior BLM inventories, ID team knowledge, aerial photographs, field observations, maps, etc.)

Conduct field reviews as necessary to verify information and to ascertain current conditions. Reach conclusions on current conditions including boundaries, size of areas and presence or absence of wilderness characteristics. Fully explain the basis for each conclusion on form 2, including any critical differences between BLM and citizen information.

Document your findings regarding current conditions for each inventoried area. Describe how the present conditions are similar to, or have changed from, the conditions documented in the original wilderness inventory. Document your findings on Form 2 for each inventory area. Cite to or attach data considered, including photographs, maps, GIS layers, field trip notes, project files, *etc.*

## **FORM 2 -- DOCUMENTATION OF CURRENT WILDERNESS INVENTORY CONDITIONS**

**Unit Number/ Name:** OR-034-100 — Wild Rose Reservoir

**Description of Current Conditions:** [Include land ownership, location, topography, vegetation features and summary of major human uses/activities.]

### **1. Is the unit of sufficient size?**

Yes  No

**Description:** Refer to this unit's associated Map 1 for its location. The unit is smaller than the late 1970's identified unit OR-03-05-26, since a portion of that historic unit became Blue Canyon WSA in 1980. The 12,420 acre unit abuts the WSA with a road on its north and most of its west sides. The unit's south boundary is a combination of county road 796 and another road crossing public lands at the unit's southwest corner, and private lands and another road crossing public lands between these private land parcels on its east side. A short cherry-stem road and an associated BLM developed mineral materials site (depicted on Map 1 as a surface mining disturbance site) are also features of the unit's boundary. The unit's boundary roads receive mechanical maintenance as needed to keep them passable on a relatively regular and seasonally continuous basis.

### **2. Is the unit in a natural condition?**

Yes  No  N/A

**Description:** The entire unit is nearly flat, with predominately gentle, undulating elevations of between 4,534 and 4,821 feet. Vegetation is predominately sagebrush and both native and non-native rangeland grasses.

Refer to this unit's associated Map 1 and Map 2 for human developments within the unit. They include 10 widely distributed earthen reservoirs (4 which are located very close to the unit's north, west and south boundary roads, and one of which is fence enclosed), 14.1 miles of rangeland fences which dissect the unit in multiple directions, and 10.6 miles of 5 motorized primitive trails (MPTs). The numerous fences are spatially close to each other throughout the unit (mostly less than 1.5 miles apart). To the average visitor, there remains no visual evidence of two disc-drilled seedings and a chemical vegetative treatment which occurred between 1961 and 1965. One of the MPTs dissects the unit through its middle. Only a portion of the northeast sector of the unit has no MPTs within it; otherwise, the MPTs penetrate the unit from substantially separated locations along its boundary roads. Overall, given the combined extent and close proximity of the numerous fences – in relation to each other and the locations and extent of the MPTs -- the unit does not appear to be affected primarily by the forces of nature with the imprint of humans substantially noticeable to the average visitor.

**3. Does the unit have outstanding opportunities for solitude?**Yes \_\_\_\_\_ No \_\_\_\_\_ N/A \_\_\_\_\_ **X** \_\_\_\_\_

**Description:** Since the unit is determined to not be in a natural condition, a determination for outstanding opportunities for solitude need not be addressed. However, for informational purposes, the following is provided.

The height and density of vegetation does not offer screening sufficient for outstanding opportunities for solitude. The majority of the unit has a configuration resulting in an area of between 3 and 5.5 miles long and about 1.5 to 4.8 miles wide. Shallow drainages extend multi-directionally throughout the unit; some of the drainage channels have more so low-profiled rolling terrain between them. Although a sense of being alone can be experienced, neither vegetation nor topography of this unit – separately or in combination relative to the unit's configuration -- provide sufficient screening to avail outstanding opportunities for solitude.

**4. Does the unit have outstanding opportunities for primitive and unconfined recreation?**Yes \_\_\_\_\_ No \_\_\_\_\_ N/A \_\_\_\_\_ **X** \_\_\_\_\_

**Description:** Since the unit is determined to not be in a natural condition, a determination for outstanding opportunities for primitive and unconfined recreation need not be addressed. However, for informational purposes, the following is provided.

The primary activity is hunting of common game species (primarily chukar, antelope and deer), and its associated day hiking and general sightseeing. The unit does not possess any special or unique features to specifically draw visitors to it. The activities -- individually or in combination -- do not provide outstanding opportunities for primitive and unconfined recreation.

**5. Does the unit have supplemental values?**Yes \_\_\_\_\_ **X** \_\_\_\_\_ No \_\_\_\_\_ N/A \_\_\_\_\_

**Description:** BLM has documented 3 leks of sage grouse, a BLM special status animal species.

Summary of Findings and Conclusion

Unit Name and Number: OR-034-100 — Wild Rose Reservoir

Summary Results of Analysis:

- 1. Does the area meet any of the size requirements?  Yes  No
- 2. Does the area appear to be natural?  Yes  No
- 3. Does the area offer outstanding opportunities for solitude or a primitive and unconfined type of recreation?  Yes  No  NA
- 4. Does the area have supplemental values?  Yes  No  NA

Conclusion -- check one:

- The area, or a portion of the area, has wilderness character.
- The area does not have wilderness character.

Prepared by: Robert Alward  
Robert Alward, Wilderness Planner contractor

Team Members:

<u>Mitch Thomas</u>	<u>2/4/10</u>
Mitch Thomas, Rangeland Management Specialist	Date
<u>Shaney Rockefeller</u>	<u>3/10/10</u>
Shaney Rockefeller, Soil Scientist	Date
<u>Gillian Wigglesworth</u>	<u>2/5/10</u>
Gillian Wigglesworth, Botanist, Yale District	Date
<u>Dafe Draheim</u>	<u>2/10/10</u>
Dafe Draheim, Outdoor Recreation Planner	Date
<u>Michelle Caviness</u>	<u>2/23/10</u>
Michelle Caviness, Wildlife Biologist	Date
<u>Eian Ray</u>	<u>02/09/10</u>
Eian Ray, GIS Specialist, contractor	Date
<u>Brent Grasty</u>	<u>2/9/10</u>
Brent Grasty, GIS Coordinator	Date

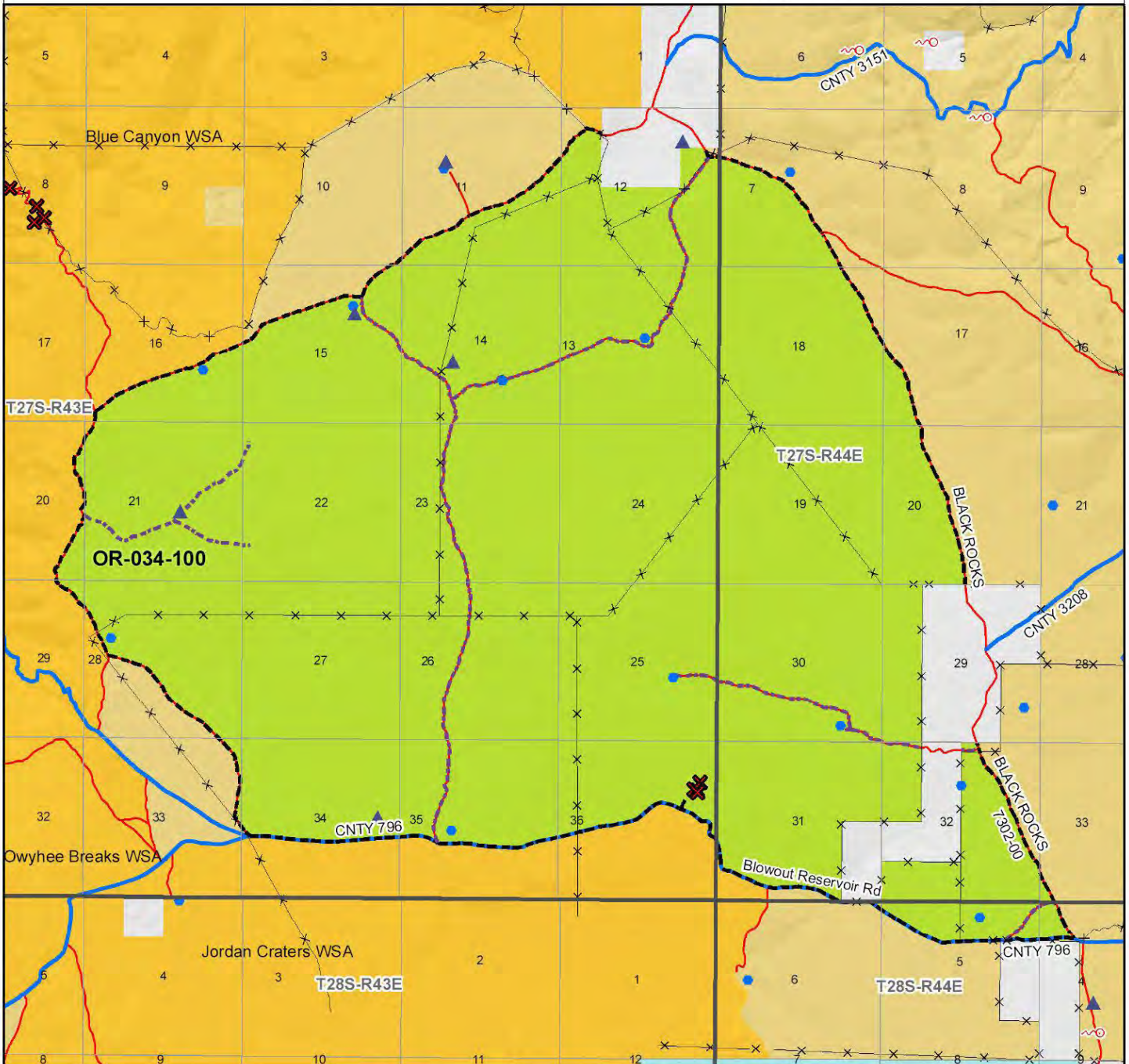
Approved by: [Signature] 7/11/10  
Pat Ryan, Malheur Resource Area Field Manager Date

*This form documents information that constitutes an inventory finding on wilderness characteristics. It does not represent a formal land use allocation or a final agency decision subject to administrative remedies under either 43 CFR parts 4 or 1610.5-2.*



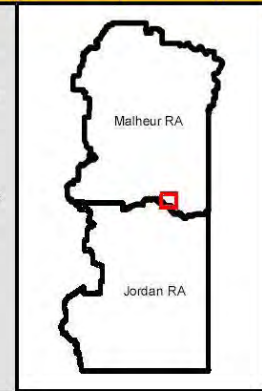
# Wilderness Characteristics - Overview

## Wild Rose Reservoir - OR-034-100 - Map 1 of 2



**Legend**

Developed Spring	Route Types - BLM Determination
Wildlife Guzzler	Boundary Road
Earthen Reservoir	Moblized Primitive Trail (MPT)
Pipeline	Discontinued Use
Trough	Routes - Outside Wild Char Unit
Fence	County
Storage Tank	Major Highway
Surface Mining Disturbance	BLM Numbered & Other Routes
Sage Grouse Lek	Land Ownership
Special Status Plant	Bureau of Land Management
BLM Wild Char Inventory Unit	State
Wilderness Study Area	Private
Mineral Material Site	Other Federal Land
Road/Utility Right-of-Way	
Major Water Body	



**U.S. DEPARTMENT OF THE INTERIOR**  
BUREAU OF LAND MANAGEMENT

**VALE DISTRICT**  
December 2, 2009

No warranty is made by the Bureau of Land Management as to the accuracy, reliability, or completeness of these data for individual or aggregate use with other data. Original data were compiled from various sources. This information may not meet National Map Accuracy Standards. This product was developed through digital means and may be updated without notification.

**--FINAL--**



