

Wilderness Inventory Unit Index of Documents
***Updated** – Willow Butte OR-036-046, 12 total pages

Page 1: Index Cover Sheet

[Page 2: Form 1 – Documentation of BLM Wilderness Inventory: Findings on Record](#)

[Page 5: Form 2 – Documentation of Current Wilderness Inventory Conditions](#)

[Page 10: Form 2 – Summary of Findings and Conclusion](#)

[Page 11: Wilderness Characteristics Overview–Willow Butte OR-036-046 Map 1 of 2](#)

[Page 12: Wilderness Characteristics-Land Treatments-Willow Butte OR-036-046 Map 2 of 2](#)

**Prepared by:
U.S. Department of the Interior
Bureau of Land Management
Vale District Office
100 Oregon Street
Vale, Oregon 97918**



H-6300-1-WILDERNESS INVENTORY MAINTENANCE IN BLM OREGON/WASHINGTON

APPENDIX B – INVENTORY AREA EVALUATION

Evaluation of Current Conditions:

1) Document and review the existing BLM wilderness inventory findings on file, if available, regarding the presence or absence of individual wilderness characteristics, using Form 1, below.

2) Consider relevant information regarding current conditions available in the office to identify and describe any changes to the existing information (use interdisciplinary (ID) team knowledge, aerial photographs, field observations, maps, etc.), and document your findings on Form 2, below.

When Citizen Information has been submitted regarding wilderness characteristics, document the submitted materials including: date of Submission; Name of District(s) and Field Office(s) Affected; Type of material Submitted (e.g. narrative, map, photo). Evaluate any submitted citizen information regarding the validity of proposed boundaries of the unit(s), the existence of roads and other boundary features, the size of the unit(s), and the presence or absence of wilderness characteristics based on relevant information available in the office (prior BLM inventories, ID team knowledge, aerial photographs, field observations, maps, etc.)

Conduct field reviews as necessary to verify information and to ascertain current conditions. Reach conclusions on current conditions including boundaries, size of areas and presence or absence of wilderness characteristics. Fully explain the basis for each conclusion on form 2, including any critical differences between BLM and citizen information.

Document your findings regarding current conditions for each inventoried area. Describe how the present conditions are similar to, or have changed from, the conditions documented in the original wilderness inventory. Document your findings on Form 2 for each inventory area. Cite to or attach data considered, including photographs, maps, GIS layers, field trip notes, project files, *etc.*

Year: 2012 **Unit Number/Name:** OR-036-046 -- Willow Butte

**FORM 1 -- DOCUMENTATION OF BLM WILDERNESS INVENTORY
FINDINGS ON RECORD**

1. Is there existing BLM wilderness inventory information on all or part of this area?

Yes No (If yes, and if more than one unit is within the area, list the names of those units.):

A.) Inventory Source(s) -- (X) Denotes all applicable BLM Inventory files, printed maps, or published BLM Decision documents with information pertaining to this unit.

Wilderness Inventories

- (X) 1978 – BLM Wilderness Inventory Unit 3-199 Willow Butte (and its subunit 3-199A of OR-03-12-02 -- **which eventually [11/1980] became part of 3-152 Whitehorse Creek WSA**) (unpublished BLM documents in case files)
- (X) April 1979 – *Wilderness -- Proposed Initial Inventory – Roadless Areas and Islands Which Clearly Do Not have Wilderness Characteristics, Oregon and Washington*
- (X) 2007-2011 Vale District Wilderness Characteristics Inventory Maintenance – OR-036-046, Willow Butte (2010).

Wilderness Decision Documents

- (X) August 1979 – *Wilderness Review – Initial Inventory, Final Decision on Public Lands Obviously Lacking Wilderness Characteristics and Announcement of Public Lands to be Intensively Inventoried for Wilderness Characteristics, Oregon and Washington* (green document)
- () October 1979 – *Wilderness Review – Intensive Inventory - Oregon, Proposed Decision on the Intensive Wilderness Inventory of Selected Areas* (grey document)
- (X) March 1980 – *Wilderness Review – Intensive Inventory; Final Decisions on 30 Selected Units in Southeast Oregon and Proposed Decisions on Other Intensively Inventoried Units in Oregon and Washington* (orange document)
- (X) November 1980 - *Wilderness Inventory – Oregon and Washington, Final Intensive Inventory Decisions* (brown document)
(NOTE: See decision for unit 3-152 Whitehorse Creek)
- () November 1981 *Stateline Intensive Wilderness Inventory Final Decision, Oregon, Idaho, Nevada, Utah* (tan document).
- (X) 2007-2011 Vale District Wilderness Characteristics Inventory Maintenance – OR-036-085, Buckskin Mountain (7/19/2010)

B) Inventory Unit Name(s)/Number(s)

BLM 3-199 of OR-03-12-02 Willow Butte (**which eventually [11/1980] became part of 3-152 Whitehorse Creek WSA**); BLM OR-036-046 Willow Butte (2010).

C.) Map Name(s)/Number(s)

- Final Decision – Initial Wilderness Inventory Map, August 1979, Oregon
- Proposed Decision -- Intensive Wilderness Inventory of Selected Areas Map, October 1979, Oregon
- Intensive Wilderness Inventory Map, March 1980, Oregon
- Intensive Wilderness Inventory --Final Decisions Map, November 1980, Oregon. (NOTE: See Map for decision of unit 3-152 Whitehorse Creek)
- November, 1981 *Stateline Intensive Wilderness Inventory Final Decision, Oregon, Idaho, Nevada, Utah* (tan document)
- 2007-2011 Vale District Wilderness Characteristics Inventory Maintenance – OR-036-046, Willow Butte (7/19/2010)

D.) BLM District(s)/Field Office(s)

Vale District Office Jordan Field Office
 Burns District Office Andrews Field Office

2. BLM Inventory Findings on Record

(Existing inventory information regarding wilderness characteristics (if more than one BLM inventory unit is associated with the area, list each unit and answer each question individually for each inventory unit):

Inventory Source: See above.

Unit#/ Name	Size (historic acres)	Natural Condition? Y/N	Outstanding Solitude? Y/N	Outstanding Primitive & Unconfined Recreation? Y/N	Supplemental Values? Y/N
3-199 Willow Butte of OR-03-12-02 ; (Subunit 3-199A was joined into 3-152)*	18,250	Y	N	N	N
OR-036-046 Willow Butte (7-19-2010)	Vale = 15,928 Burns = 2,325	Y Y	N ****	N ****	Y Y

* -- Subunit 3-199A was 12,360 acres, which eventually was added into 3-152 (Whitehorse Creek) during the closing stages of the intensive WC inventory in 1980. For additional information, also review 1980 inventory documents for OR-3-152.

H-6300-1-WILDERNESS INVENTORY MAINTENANCE IN BLM OREGON/WASHINGTON

APPENDIX B – INVENTORY AREA EVALUATION

Evaluation of Current Conditions:

- 1) Document and review the existing BLM wilderness inventory findings on file, if available, regarding the presence or absence of individual wilderness characteristics, using Form 1, below.
- 2) Consider relevant information regarding current conditions available in the office to identify and describe any changes to the existing information (use interdisciplinary (ID) team knowledge, aerial photographs, field observations, maps, etc.), and document your findings on Form 2, below.

When Citizen Information has been submitted regarding wilderness characteristics, document the submitted materials including: date of Submission; Name of District(s) and Field Office(s) Affected; Type of material Submitted (e.g. narrative, map, and photos). Evaluate any submitted citizen information regarding the validity of proposed boundaries of the unit(s), the existence of roads and other boundary features, the size of the unit(s), and the presence or absence of wilderness characteristics based on relevant information available in the office (prior BLM inventories, ID team knowledge, aerial photographs, field observations, maps, etc.)

Conduct field reviews as necessary to verify information and to ascertain current conditions. Reach conclusions on current conditions including boundaries, size of areas and presence or absence of wilderness characteristics. Fully explain the basis for each conclusion on form 2, including any critical differences between BLM and citizen information.

Document your findings regarding current conditions for each inventoried area. Describe how the present conditions are similar to, or have changed from, the conditions documented in the original wilderness inventory. Document your findings on Form 2 for each inventory area. Cite to or attach data considered, including photographs, maps, GIS layers, field trip notes, project files, *etc.*

FORM 2 -- DOCUMENTATION OF CURRENT WILDERNESS INVENTORY CONDITIONS

Unit Number/Name: OR-036-046 -- Willow Butte

NOTE: This wilderness characteristics (WC) inventory unit OR-036-046 includes public lands located within both the Vale and Burns BLM districts. This current WC inventory maintenance for this unit is the result of BLM national guidance being re-issued for conducting WC inventory since this inventory unit had inventory maintenance completed on it with a BLM Vale District finding dated July 19, 2010.

Description of Current Conditions: [Include land ownership, location, topography, vegetation features and summary of major human uses/activities.]

1. Is the unit of sufficient size?

Yes X No

Description: Refer to this inventory unit's associated Map 1 for its location. This 18,253 acre unit is located within both the BLM Burns District (2,325 acres) and the Vale District (15,928 acres). The unit is virtually the same size as the 18,250 acre late 1970's original 3-199 unit (see the footnote below the table of Form 1 for further explanation). However, certain private land parcels along Willow Creek have been acquired by BLM since that original inventory, and are included in this OR-036-046 unit. Even with these added lands, current more so accurate means of determining acreage does result in the acreage figure presently being nearly the same as stated in the BLM late 1970's wilderness characteristics inventory. Three routes (County 3181, a segment of BLM 6319-0-00, and another route that crosses public land in the unit's northern reach) which in the 1970's were determined to be roads (resulting in part, in subunit 3-199A [12,360 acres] and 3 other subunits each which did not meet size criteria) have since the late 1970's changed status to motorized primitive trails (MPTs) due to no mechanical maintenance of them so to provide for regular and continuous use and with no intent by BLM to perform such maintenance on them.

The unit is triangular in shape with boundaries consisting of the right-of-way for County Road 203 (Whitehorse Ranch Road), a utility right-of-way corridor, and a BLM mineral materials site on its west boundary; BLM 6319-0-00 on its east boundary; and, BLM 8260-0-00 and a segment of 6319-0-00 on its south boundary. It is bounded by private property in the southwest corner of the unit. An 80 acre private inholding with its associated cherry-stem road and the BLM Willow Hot Spring recreation site and its associated short cherry-stem road also serve as boundary features of the unit. The boundary roads receive mechanical maintenance as needed to keep them passable on a relatively regular and seasonally continuous basis.

2. Is the unit in a natural condition?Yes No N/A

Description: The unit is largely of undulating very low profile terrain with minor, shallow ravines and gullies which flow predominately in a northerly direction. Willow Butte, in the unit's southeast sector, possesses the highest elevation at 5,439 feet; the unit's lowest elevation of about 4,500 feet is in the northern reach of the unit. Vegetation is predominately sagebrush and range grasses with riparian vegetation along Willow Creek.

Refer to this inventory unit's associated Map 1 and Map 2 for human developments. Most of the developments are located within the southern approximate third of the inventory unit. The unit has 35.1 miles of 22 motorized primitive trails (MPTs) (which about 7 miles of 4 of the MPTs are in Burns District), 7.2 miles of rangeland fence (0.5 mile of it in Burns District), 13.9 miles of buried water pipeline systems with 14 troughs (5.4 pipeline miles and 6 of the troughs in Burns District), 9 earthen reservoirs (1 in Burns District), and 2 corrals (corrals not depicted on Map 1 -- one in section 10, other in section 15, T.39S. R.48E, within Vale District). There is some remnant visual evidence of 2.1 miles of 2 abandoned routes, and of 3 small old surface mining sites. Three old buildings in advanced stages of ruin are in the eastern reaches of the unit in section 35); their effect is more pastoral than obtrusive. (The surface mined sites -- located in sections 19 and 30 -- and 3 buildings are not depicted on Map 1.) Presently, to the average visitor, each of the five disc-drilled seedings of native and non-native grasses (between 1973-1996) affecting the unit is indistinguishable. In the inventory unit, within Burns District, approximately 1,600 acres of seeding, in part, provides forage to take livestock grazing pressure off important higher elevation sage-grouse habitat in the Trout Creek Mountains. Recognized within the Trout Creek Mountain Allotment Management Plan (AMP), the seeding may need to be maintained from time to time to continue to produce the productivity necessary to meet management objectives of the AMP. Future seeding maintenance may include brush beating, burning, spraying, drilling seed or broadcasting seed or any combination of treatments.

Overall, due to the type, nature, spatial distribution and location of human developments, the unit appears to be affected primarily by the forces of nature with the imprint of mankind being substantially unnoticeable to the average visitor. This is the same conclusion for the unit by BLM in the late 1970's.

3. Does the unit have outstanding opportunities for solitude?Yes No N/A

Description: The late 1970's BLM finding for the entire unit was that the unit did not have outstanding opportunities for solitude; factors affecting that conclusion have not substantially changed since that time.

The inventory unit lacks sufficient vegetation types and/or density to – alone --support outstanding opportunities for solitude. The unit possesses limited topographic screening provided by the expanse of ravines and gullies. Willow Butte does not provide much screening because of its relatively low relief profile and its location proximate to the unit's southeast boundaries with only fairly flat sagebrush-covered terrain around much of it. However (and although not a qualifying factor for consideration with this WC inventory maintenance), this perception is partially negated by the expanded viewshed east of the Butte -- associated with the adjacent Willow Creek WSA. The unit is generally an acute-shaped triangle with the east-west width across its southern approximate third being about 5 to 6 miles. The narrower width of the unit's northernmost sector – relative to its substantially nearly flat terrain and vegetation type (sagebrush) – is not sufficient to support outstanding opportunities for solitude. Even when accounting for the presently increased size of this unit (versus the size of the 3-199A unit -- 12,360 acres – studied in the late 1970's/1980) – and while discounting the unit's narrower northern approximate third – the unit has some topographic screening to accommodate a sense of being alone, yet the overall topographic settings and the narrow character of the northern approximate third of the unit and of the unit's southern area remain insufficient to prove outstanding opportunities for solitude, even within the core of the unit.

4. Does the unit have outstanding opportunities for primitive and unconfined recreation?

Yes _____ No X N/A _____

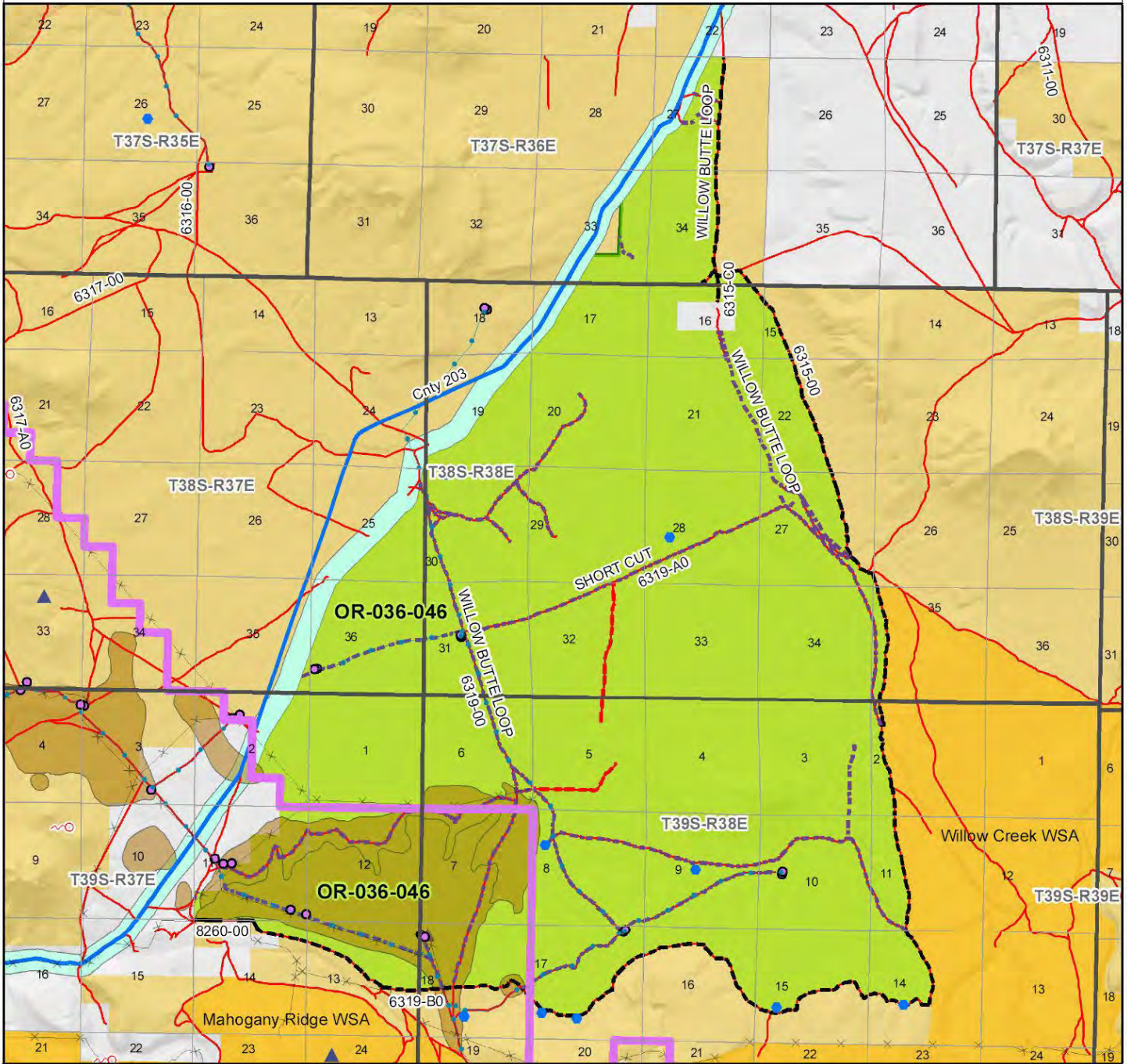
Description: The late 1970's BLM finding was that the entire unit did not have outstanding opportunities for primitive and unconfined recreation; factors affecting that conclusion have not substantially changed since that time.

The Lahontan (alias Willow/Whitehorse) cutthroat trout – a Federal listed Threatened species under the Endangered Species Act (ESA) and yet a game species within the State of Oregon -- is present in Willow Creek within the unit, but the riparian habitat for the species is of marginal quality and with insufficient size or quantity of fish to provide for an outstanding primitive and unconfined fishing opportunity. (The species is more abundant and fished in higher elevations with more suitable habitat requirements for the species within the proximate Trout Creek Mountains and Oregon Canyon Mountains, most which are presently within BLM-designated Wilderness Study Areas.) Similarly, bighorn sheep habitat is in the northernmost reach of the unit (a part of a much larger bighorn sheep habitat area which encompasses the entire complex of the Oregon Canyon/Trout Creek Mountains), but hunting of the sheep (a prized big game species in Oregon) within this inventory unit is not considered outstanding due to marginal habitat suitability for the species. There are also opportunities for hiking, backpacking and horseback riding, sightseeing and photography. The area does not possess any unique or special natural or cultural features which would draw recreating visitors. For reasons stated, none of the unit's primitive and unconfined recreation opportunities -- individually or in combination(s) -- are determined outstanding.

5. Does the unit have supplemental values?Yes X No N/A

Description: The Lahontan (alias Willow/Whitehorse) cutthroat trout is present in Willow Creek within the unit; the fish species is a federally listed Threatened species under the ESA. Solitary milkvetch and fourwing milkvetch, both a BLM special status plant species, are located in the southwest corner area of the unit. Present inventory indicates the presence of one lek of sage grouse, a BLM special status animal species.

Wilderness Characteristics - Overview Willow Butte - OR-036-046 - Map 1 of 2



Legend

- Developed Spring
- Wildlife Guzzler
- Earthen Reservoir
- Pipeline
- Trough
- Fence
- Storage Tank
- Surface Mining Disturbance
- Sage Grouse Lek
- Special Status Plant
- BLM Wild Char Inventory Unit
- Wilderness Study Area
- Mineral Material Site
- Road/Utility Right-of-Way
- Major Water Body

Route Types - BLM Determination

- Boundary Road
- Motorized Primitive Trail (MPT)
- Discontinued Use

Routes - Outside Wild Char Unit

- County
- Major Highway
- BLM Numbered & Other Routes

Land Ownership

- Bureau of Land Management
- State
- Private
- Other Federal Land
- District Boundary

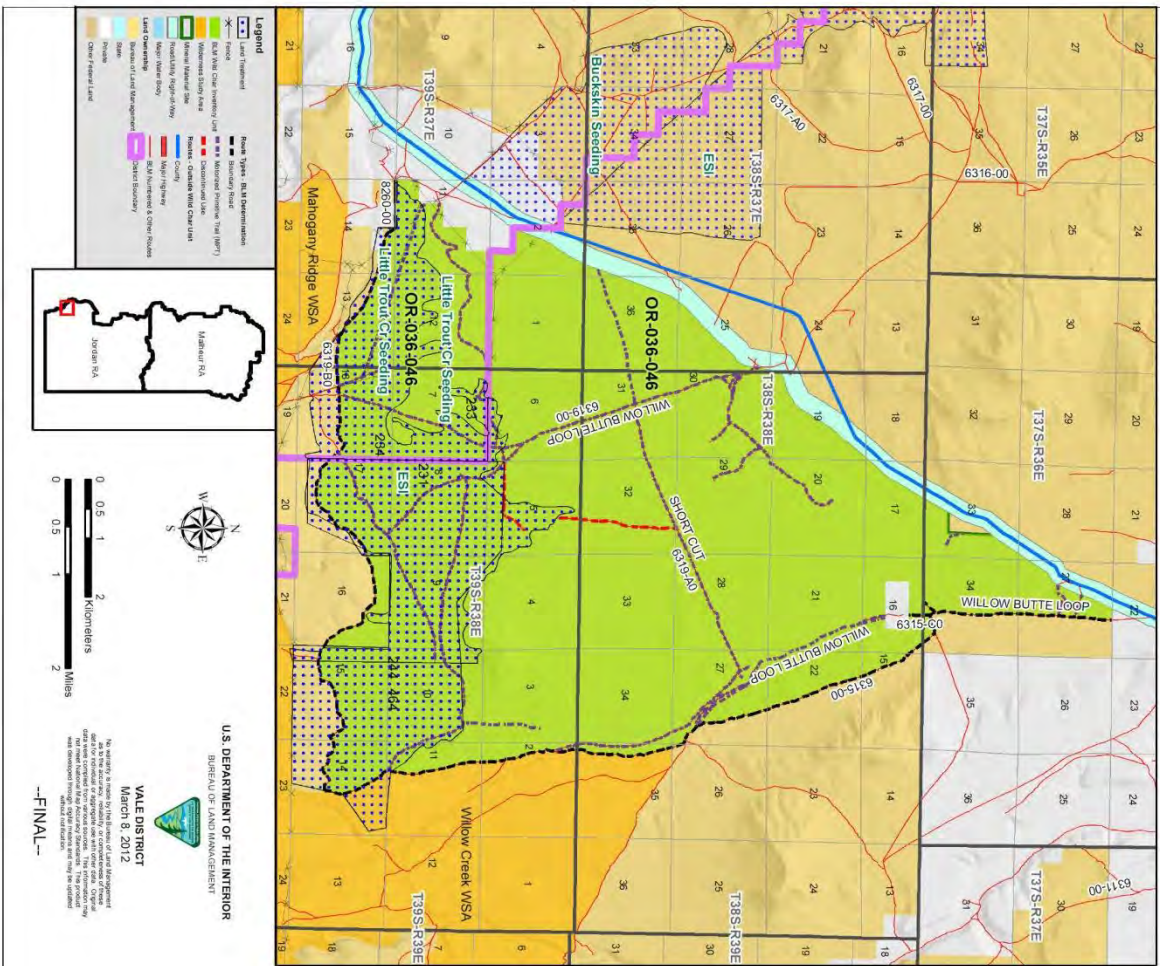
U.S. DEPARTMENT OF THE INTERIOR
BUREAU OF LAND MANAGEMENT

VALE DISTRICT
February 22, 2012

No warranty is made by the Bureau of Land Management as to the accuracy, reliability, or completeness of these data for individual or aggregate use with other data. Original data were compiled from various sources. This information may not meet National Map Accuracy Standards. This product was developed through digital means and may be updated without notification.

--FINAL--

Wilderness Characteristics - Land Treatments
Willow Butte - OR-036-046 - Map 2 of 2



Wilderness Characteristics - Land Treatments
Willow Butte - OR-036-046 - Map 2 of 2

OBJECTID*	NAME	TREATMENT TYPE	SEED GROUP	DATE
244	WILLOW BUTTE SDS	Plow/Disc	Not Applicable	1973
464	WILLOW BUTTE SDS	Drill Seeding	Non-native Grasses	1973

OBJECTID*	TRT_NAME	REVEG_TYPE
231	ES1	Range Seeding
233	Little Trout Cr Seeding	Range Seeding
234	Little Trout Cr Seeding	Range Seeding

Note: The Land Treatments represented by many blue dots on the map to the left are labeled with the treatments' ObjectIDs listed in the first field of the Land Treatments table shown above. Multiple types of treatments may have been applied to the same area. For example, one treatment area may have been plowed and drill seeded - a record is shown in the table for each type of treatment.

U.S. DEPARTMENT OF THE INTERIOR
 BUREAU OF LAND MANAGEMENT

VALE DISTRICT
 March 8, 2012

--FINAL--