

Wilderness Inventory Unit Index of Documents
Thorn Flat OR-034-109, 9 total pages

Page 1: Index Cover Sheet

[Page 2: Form 1 – Documentation of BLM Wilderness Inventory: Findings on Record](#)

[Page 5: Form 2 – Documentation of Current Wilderness Inventory Conditions](#)

[Page 8: Form 2 – Summary of Findings and Conclusion](#)

[Page 9: Wilderness Characteristics Overview – Thorn Flat OR-034-109 Map 1 of 1](#)

Prepared by:
U.S. Department of the Interior
Bureau of Land Management
Vale District Office
100 Oregon Street
Vale, Oregon 97918



H-6300-1-WILDERNESS INVENTORY MAINTENANCE IN BLM OREGON/WASHINGTON

APPENDIX B – INVENTORY AREA EVALUATION

Evaluation of Current Conditions:

- 1) Document and review the existing BLM wilderness inventory findings on file, if available, regarding the presence or absence of individual wilderness characteristics, using Form 1, below.
- 2) Consider relevant information regarding current conditions available in the office to identify and describe any changes to the existing information (use interdisciplinary (ID) team knowledge, aerial photographs, field observations, maps, etc.), and document your findings on Form 2, below.

When Citizen Information has been submitted regarding wilderness characteristics, document the submitted materials including: date of Submission; Name of District(s) and Field Office(s) Affected; Type of material Submitted (e.g. narrative, map, photo). Evaluate any submitted citizen information regarding the validity of proposed boundaries of the unit(s), the existence of roads and other boundary features, the size of the unit(s), and the presence or absence of wilderness characteristics based on relevant information available in the office (prior BLM inventories, ID team knowledge, aerial photographs, field observations, maps, etc.)

Conduct field reviews as necessary to verify information and to ascertain current conditions. Reach conclusions on current conditions including boundaries, size of areas and presence or absence of wilderness characteristics. Fully explain the basis for each conclusion on form 2, including any critical differences between BLM and citizen information.

Document your findings regarding current conditions for each inventoried area. Describe how the present conditions are similar to, or have changed from, the conditions documented in the original wilderness inventory. Document your findings on Form 2 for each inventory area. Cite to or attach data considered, including photographs, maps, GIS layers, field trip notes, project files, *etc.*

Year: 2010 Unit Number/Name: OR-034-109 — Thorn Flat

**FORM 1 -- DOCUMENTATION OF BLM WILDERNESS INVENTORY
FINDINGS ON RECORD**

1. Is there existing BLM wilderness inventory information on all or part of this area?

Yes X No _____ (If yes, and if more than one unit is within the area, list the names of those units.):

A.) Inventory Source(s) -- (X) Denotes all applicable BLM Inventory files, printed maps, or published BLM Decision documents with information pertaining to this unit.

Wilderness Inventories

- (X) 1978 – BLM Wilderness Inventory Unit partially of OR-03-01-26 Thorn Flat (unpublished BLM document in case files)
- () April 1979 – *Wilderness -- Proposed Initial Inventory – Roadless Areas and Islands Which Clearly Do Not have Wilderness Characteristics, Oregon and Washington*

Wilderness Decision Documents

- () August 1979 – *Wilderness Review – Initial Inventory, Final Decision on Public Lands Obviously Lacking Wilderness Characteristics and Announcement of Public Lands to be Intensively Inventoried for Wilderness Characteristics, Oregon and Washington* (green document)
- () October 1979 – *Wilderness Review – Intensive Inventory - Oregon, Proposed Decision on the Intensive Wilderness Inventory of Selected Areas* (grey document)
- () March 1980 – *Wilderness Review – Intensive Inventory; Final Decisions on 30 Selected Units in Southeast Oregon and Proposed Decisions on Other Intensively Inventoried Units in Oregon and Washington* (orange document)
- () November 1980 - *Wilderness Inventory – Oregon and Washington, Final Intensive Inventory Decisions* (brown document)
- () November 1981 *Stateline Intensive Wilderness Inventory Final Decision, Oregon, Idaho, Nevada, Utah* (tan document)

B.) Inventory Unit Name(s)/Number(s)

Partially of BLM OR-03-01-26 Thorn Flat

C.) Map Name(s)/Number(s)

- () Final Decision – Initial Wilderness Inventory Map, August 1979, Oregon
- () Proposed Decision -- Intensive Wilderness Inventory of Selected Areas Map, October 1979, Oregon
- () Intensive Wilderness Inventory Map, March 1980, Oregon
- () Intensive Wilderness Inventory --Final Decisions Map, November 1980, Oregon
- () November, 1981 *Stateline Intensive Wilderness Inventory Final Decision, Oregon, Idaho, Nevada, Utah* (tan document)

D.) BLM District(s)/Field Office(s)

Vale District/Malheur Resource Area

2. BLM Inventory Findings on Record

(Existing inventory information regarding wilderness characteristics (if more than one BLM inventory unit is associated with the area, list each unit and answer each question individually for each inventory unit):

Inventory Source: See above.

Unit#/ Name	Size (historic acres)	Natural Condition? Y/N	Outstanding Solitude? Y/N	Outstanding Primitive & Unconfined Recreation? Y/N	Supplemental Values? Y/N
Partially of OR-03-01-26 Thorn Flat	4,480	*	*	*	*
TOTAL	4,480				

* -- These criteria were not addressed during the inventory of this unit since the unit’s largest parcel of contiguous public land – 4,480 acres (as stated above, of the original OR-03-01-26 unit’s total 7,460 acres of seven non-contiguous public land parcels) -- did not meet any size criteria.

H-6300-1-WILDERNESS INVENTORY MAINTENANCE IN BLM OREGON/WASHINGTON

APPENDIX B – INVENTORY AREA EVALUATION

Evaluation of Current Conditions:

- 1) Document and review the existing BLM wilderness inventory findings on file, if available, regarding the presence or absence of individual wilderness characteristics, using Form 1, below.
- 2) Consider relevant information regarding current conditions available in the office to identify and describe any changes to the existing information (use interdisciplinary (ID) team knowledge, aerial photographs, field observations, maps, etc.), and document your findings on Form 2, below.

When Citizen Information has been submitted regarding wilderness characteristics, document the submitted materials including: date of Submission; Name of District(s) and Field Office(s) Affected; Type of material Submitted (e.g. narrative, map, photo). Evaluate any submitted citizen information regarding the validity of proposed boundaries of the unit(s), the existence of roads and other boundary features, the size of the unit(s), and the presence or absence of wilderness characteristics based on relevant information available in the office (prior BLM inventories, ID team knowledge, aerial photographs, field observations, maps, etc.)

Conduct field reviews as necessary to verify information and to ascertain current conditions. Reach conclusions on current conditions including boundaries, size of areas and presence or absence of wilderness characteristics. Fully explain the basis for each conclusion on form 2, including any critical differences between BLM and citizen information.

Document your findings regarding current conditions for each inventoried area. Describe how the present conditions are similar to, or have changed from, the conditions documented in the original wilderness inventory. Document your findings on Form 2 for each inventory area. Cite to or attach data considered, including photographs, maps, GIS layers, field trip notes, project files, *etc.*

FORM 2 -- DOCUMENTATION OF CURRENT WILDERNESS INVENTORY CONDITIONS

Unit Number/Name: OR-034-109 — Thorn Flat

Description of Current Conditions: [Include land ownership, location, topography, vegetation features and summary of major human uses/activities.]

1. Is the unit of sufficient size?

Yes X No

Description: Refer to this inventory unit's associated Map 1 for its location. The unit has 7,095 acres of public land. The unit's boundaries differ from the BLM's late 1970's inventory as a result of changed land ownership status of the area (section 36 acquired by BLM from State of Oregon). An increase of contiguous public land acreage results in this OR-034-109 unit meeting size criteria. Boundaries of the unit are County road 516 on its south side, a segment of road, private lands and a functioning irrigation canal and its associated paralleling road on its east side, and private lands on its north and west sides (Note: researched records indicate section 30 is not BLM land, although Map 1 presently depicts it as such). Boundary roads are mechanically maintained as required to provide for relatively regular and continuous use.

2. Is the unit in a natural condition?

Yes X No N/A

Description: Elevations range from 3,822 to 4,781 feet. The majority of the unit is upper watershed of Black Creek and some of its upper tributaries. The creek drains to the northeast through the unit. The unit's northwest sector has drainages of a northerly orientation which originate from an east-west traversing ridge through the generally central area of the unit. The majority of the terrain is of moderate to approaching steep slopes associated with the watersheds; the mild gradients of Thorn Flat are within the unit's southwest sector. Dominate vegetation within the unit is native grasses and sagebrush.

Refer to this unit's associated Map 1 for human imprints. There are 7 miles of 8 MPTs, 9.1 miles of rangeland fence, 3 earthen reservoirs and 1 developed spring. There remains nominal visual contrast of one abandoned very short vehicle route within the unit. A combination of the type, extent, numbers and locations of the developments results in the unit appearing – overall -- to be affected primarily by the forces of nature with the imprint of humans substantially unnoticeable to the average visitor.

3. Does the unit have outstanding opportunities for solitude?Yes _____ No X N/A _____

Description: The unit has insufficient vegetative cover for screening between visitors to provide for outstanding opportunities for solitude. The unit's highly distorted configuration results in only a very small central core area which – combined with topographic features of the area -- can provide a sense of being isolated, but nowhere does the topography of the unit -- in light of its configuration relative to its size-- provide sufficient area for experiencing outstanding opportunities for solitude.

4. Does the unit have outstanding opportunities for primitive and unconfined recreation?Yes _____ No X N/A _____

Description: The primary recreation is hunting of common game species (primarily deer, elk and chukar) and associated hiking. The unit possesses no special or unique features which would draw visitors to it. Individually or in combination, the activities do not provide outstanding opportunities for primitive and unconfined recreation.

5. Does the unit have supplemental values?Yes _____ No X N/A _____

Description: None known.

Summary of Findings and Conclusion

Unit Name and Number: OR-034-109 — Thorn Flat

Summary Results of Analysis:


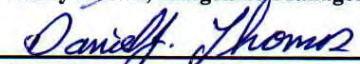

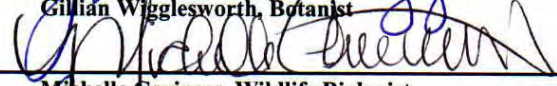
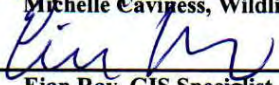
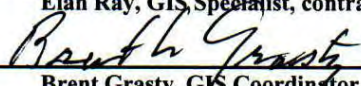
- 1. Does the area meet any of the size requirements? Yes No
- 2. Does the area appear to be natural? Yes No
- 3. Does the area offer outstanding opportunities for solitude or a primitive and unconfined type of recreation? Yes No NA
- 4. Does the area have supplemental values? Yes No NA

Conclusion -- check one:

- The area, or a portion of the area, has wilderness character.
- The area does not have wilderness character.

Prepared by: 
Robert Alward, Wilderness Planner contractor

Team Members:

<u></u>	<u>12/6/10</u>
Garry Brown, Rangeland Management Specialist	Date
<u></u>	<u>12/6/10</u>
Dan Thomas, Range Technician	Date
<u></u>	<u>12/6/10</u>
Gillian Wigglesworth, Botanist	Date
<u></u>	<u>12/6/10</u>
Michelle Caviness, Wildlife Biologist	Date
<u></u>	<u>12-6-10</u>
Eian Ray, GIS Specialist, contractor	Date
<u></u>	<u>12/9/10</u>
Brent Grasty, GIS Coordinator	Date

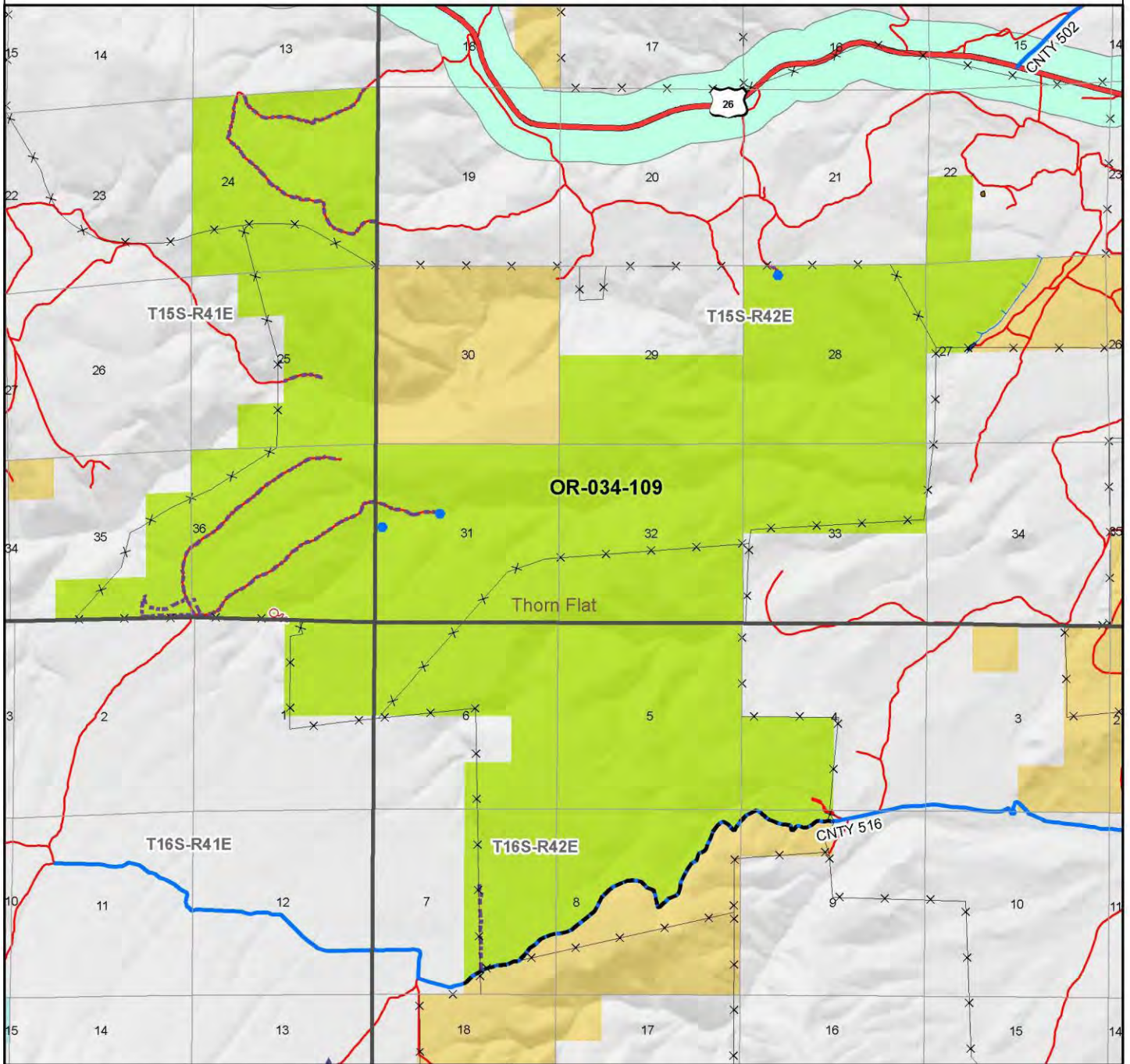
Approved by: 
Pat Ryan, Malheur Resource Area Field Manager

12/13/10
Date

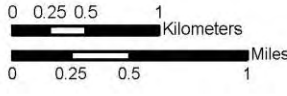
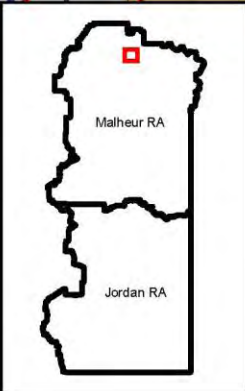
This form documents information that constitutes an inventory finding on wilderness characteristics. It does not represent a formal land use allocation or a final agency decision subject to administrative remedies under either 43 CFR parts 4 or 1610.5-2.

Wilderness Characteristics - Overview

Thorn Flat - OR-034-109 - Map 1 of 1



- | | |
|--|--|
| <ul style="list-style-type: none"> Developed Spring Wildlife Gully Earth Reservoir Pipeline Trough Fence Storage Tank Surface Mining Disturbance Irrigation Canal Sage Grouse Lek Special Status Plant BLM Wild Char Inventory Unit Wilderness Study Area Mineral Material Site Road/Utility Right-of-Way Major Water Body | <ul style="list-style-type: none"> Route Types - BLM Determination Boundary Road Motorized Primitive Trail (MPT) Discontinued Use Routes - Outside Wild Char Unit County Major Highway BLM Numbered & Other Routes Land Ownership Bureau of Land Management State Private Other Federal Land |
|--|--|



U.S. DEPARTMENT OF THE INTERIOR
BUREAU OF LAND MANAGEMENT



VALE DISTRICT
September 21, 2010

No warranty is made by the Bureau of Land Management as to the accuracy, reliability, or completeness of these data for individual or aggregate use with other data. Original data were compiled from various sources. This information may not meet National Map Accuracy Standards. This product was developed through digital means and may be updated without notification.

--FINAL--