

Wilderness Inventory Unit Index of Documents
Table Mountain OR-034-098, 10 total pages

Page 1: Index Cover Sheet

[Page 2: Form 1 – Documentation of BLM Wilderness Inventory: Findings on Record](#)

[Page 5: Form 2 – Documentation of Current Wilderness Inventory Conditions](#)

[Page 8: Form 2 – Summary of Findings and Conclusion](#)

[Page 9: Wilderness Characteristics Overview – Table Mountain OR-034-098 Map 1 of 2](#)

[Page 10: Wilderness Characteristics-Land Treatments-Table Mountain OR-034-098 Map 2 of 2](#)

Prepared by:
U.S. Department of the Interior
Bureau of Land Management
Vale District Office
100 Oregon Street
Vale, Oregon 97918



H-6300-1-WILDERNESS INVENTORY MAINTENANCE IN BLM OREGON/WASHINGTON

APPENDIX B – INVENTORY AREA EVALUATION

Evaluation of Current Conditions:

- 1) Document and review the existing BLM wilderness inventory findings on file, if available, regarding the presence or absence of individual wilderness characteristics, using Form 1, below.
- 2) Consider relevant information regarding current conditions available in the office to identify and describe any changes to the existing information (use interdisciplinary (ID) team knowledge, aerial photographs, field observations, maps, etc.), and document your findings on Form 2, below.

When Citizen Information has been submitted regarding wilderness characteristics, document the submitted materials including: date of Submission; Name of District(s) and Field Office(s) Affected; Type of material Submitted (e.g. narrative, map, photo). Evaluate any submitted citizen information regarding the validity of proposed boundaries of the unit(s), the existence of roads and other boundary features, the size of the unit(s), and the presence or absence of wilderness characteristics based on relevant information available in the office (prior BLM inventories, ID team knowledge, aerial photographs, field observations, maps, etc.)

Conduct field reviews as necessary to verify information and to ascertain current conditions. Reach conclusions on current conditions including boundaries, size of areas and presence or absence of wilderness characteristics. Fully explain the basis for each conclusion on form 2, including any critical differences between BLM and citizen information.

Document your findings regarding current conditions for each inventoried area. Describe how the present conditions are similar to, or have changed from, the conditions documented in the original wilderness inventory. Document your findings on Form 2 for each inventory area. Cite to or attach data considered, including photographs, maps, GIS layers, field trip notes, project files, *etc.*

Year: 2009 **Unit Number/Name:** OR-034-098 — Table Mountain

**FORM 1 -- DOCUMENTATION OF BLM WILDERNESS INVENTORY
FINDINGS ON RECORD**

1. Is there existing BLM wilderness inventory information on all or part of this area?

Yes No (If yes, and if more than one unit is within the area, list the names of those units.):

A.) Inventory Source(s) -- (X) Denotes all applicable BLM Inventory files, printed maps, or published BLM Decision documents with information pertaining to this unit.

Wilderness Inventories

- 1978 – 1980 -- BLM Wilderness Inventory Unit OR-03-05-19 Table Mountain; partially of OR-03-05-20 Mahogany Creek. (unpublished BLM documents in case files)
- April 1979 – *Wilderness -- Proposed Initial Inventory – Roadless Areas and Islands Which Clearly Do Not have Wilderness Characteristics, Oregon and Washington*

Wilderness Decision Documents

- August 1979 – *Wilderness Review – Initial Inventory, Final Decision on Public Lands Obviously Lacking Wilderness Characteristics and Announcement of Public Lands to be Intensively Inventoried for Wilderness Characteristics, Oregon and Washington* (green document)
- October 1979 – *Wilderness Review – Intensive Inventory - Oregon, Proposed Decision on the Intensive Wilderness Inventory of Selected Areas* (grey document).
- March 1980 – *Wilderness Review – Intensive Inventory; Final Decisions on 30 Selected Units in Southeast Oregon and Proposed Decisions on Other Intensively Inventoried Units in Oregon and Washington* (orange document)
- November 1980 - *Wilderness Inventory – Oregon and Washington, Final Intensive Inventory Decisions* (brown document)
- November 1981 *Stateline Intensive Wilderness Inventory Final Decision, Oregon, Idaho, Nevada, Utah* (tan document).

B.) Inventory Unit Name(s)/Number(s)

BLM OR-03-05-19 Table Mountain; partially of OR-03-05-20 Mahogany Creek.

C.) Map Name(s)/Number(s)

- () Final Decision – Initial Wilderness Inventory Map, August 1979, Oregon
- () Proposed Decision -- Intensive Wilderness Inventory of Selected Areas Map, October 1979, Oregon
- () Intensive Wilderness Inventory Map, March 1980, Oregon
- () Intensive Wilderness Inventory --Final Decisions Map, November 1980, Oregon.
- () November, 1981 *Stateline Intensive Wilderness Inventory Final Decision, Oregon, Idaho, Nevada, Utah* (tan document).

D.) BLM District(s)/Field Office(s)

Vale District Office/ Malheur Field Office

2. BLM Inventory Findings on Record

(Existing inventory information regarding wilderness characteristics (if more than one BLM inventory unit is associated with the area, list each unit and answer each question individually for each inventory unit):

Inventory Source: See above.

Unit#/ Name	Size (historic acres)	Natural Condition? Y/N	Outstanding Solitude? Y/N	Outstanding Primitive & Unconfined Recreation? Y/N	Supplemental Values? Y/N
OR-03-05-19 Table Mountain	4,960	*	*	*	*
Partially of OR-03-05-20 Mahogany Creek	860	*	*	*	*
TOTAL	5,820				

*-- These criteria were not specifically addressed during the inventory of these units, since neither unit met size criteria.

H-6300-1-WILDERNESS INVENTORY MAINTENANCE IN BLM OREGON/WASHINGTON

APPENDIX B – INVENTORY AREA EVALUATION

Evaluation of Current Conditions:

- 1) Document and review the existing BLM wilderness inventory findings on file, if available, regarding the presence or absence of individual wilderness characteristics, using Form 1, below.
- 2) Consider relevant information regarding current conditions available in the office to identify and describe any changes to the existing information (use interdisciplinary (ID) team knowledge, aerial photographs, field observations, maps, etc.), and document your findings on Form 2, below.

When Citizen Information has been submitted regarding wilderness characteristics, document the submitted materials including: date of Submission; Name of District(s) and Field Office(s) Affected; Type of material Submitted (e.g. narrative, map, photo). Evaluate any submitted citizen information regarding the validity of proposed boundaries of the unit(s), the existence of roads and other boundary features, the size of the unit(s), and the presence or absence of wilderness characteristics based on relevant information available in the office (prior BLM inventories, ID team knowledge, aerial photographs, field observations, maps, etc.)

Conduct field reviews as necessary to verify information and to ascertain current conditions. Reach conclusions on current conditions including boundaries, size of areas and presence or absence of wilderness characteristics. Fully explain the basis for each conclusion on form 2, including any critical differences between BLM and citizen information.

Document your findings regarding current conditions for each inventoried area. Describe how the present conditions are similar to, or have changed from, the conditions documented in the original wilderness inventory. Document your findings on Form 2 for each inventory area. Cite to or attach data considered, including photographs, maps, GIS layers, field trip notes, project files, *etc.*

FORM 2 -- DOCUMENTATION OF CURRENT WILDERNESS INVENTORY CONDITIONS

Unit Number/ Name: OR-034-098 — Table Mountain

Description of Current Conditions: [Include land ownership, location, topography, vegetation features and summary of major human uses/activities.]

1. Is the unit of sufficient size?

Yes X No

Description: Refer to this unit's associated Map 1 for its location. The boundaries are nearly the same as a combination of the two units identified in Form 1. The current unit has 5,892 acres of public land. The difference in area size from the late 1970s and now for the unit is a result of current advanced means to more accurately determine area size. The unit's boundaries are a BLM mineral materials site along with county road 795 and a utility right-of-way (ROW, not displayed on Map 1) along county road 3820 on its southwest and west sides, another road traversing public lands on its northeast side, and private lands elsewhere along its boundary. A cherry-stem road to an earthen reservoir on the top of Table Mountain -- the unit's dominating topographic feature -- is also a boundary feature of the unit. The unit's boundary roads receive mechanical maintenance as needed to keep them passable on a relatively regular and seasonally continuous basis.

2. Is the unit in a natural condition?

Yes X No X N/A

Description: The central core of the unit is dominated by the substantially flat-topped but low-profiled Table Mountain and its steep to very steep sloped sides. Elevations within the unit range from about 4,442 to 4,865 feet. The plateau of the flat topped mountain feature constitutes approximately 50% of the unit. The northeast and southwest portions of the unit below the mountain top each have a lower ridge with drainages branching opposing directions from them. Vegetation is predominately sagebrush and a mix of native and non-native rangeland grass species.

Refer to this unit's associated Map 1 and Map 2 for human developments within the unit. They include 6.4 miles of rangeland fence, 6 earthen reservoirs, 1.9 miles of buried water pipeline and 3 associated livestock troughs, and 6.0 miles of 5 motorized primitive trails. There is no visual evidence of a 1962 chemical brush treatment project on Table Mountain. However, 2 disc-drilled seedings of unknown species (Old Maid and Fallen, a combined approximately 1,000 acres within the unit) that occurred in 1964 and 1971 in the inventory unit's northeast sector remain substantially visually apparent to the average visitor. The size of these still visually contrasting seedings results in approximately 4,900 remaining acres of the inventory unit which are subject to a determination for natural condition. Due to the nature, number, locations and extent of the developments

present in this remaining 4,900 acre area of the unit, this area of the unit appears to be affected primarily by the forces of nature with the imprint of humans substantially unnoticeable to the average visitor.

3. Does the unit have outstanding opportunities for solitude?

Yes _____ No X N/A _____

Description: The two unnatural seeding areas are excluded from this determination. Although, technically, the above described remaining approximate 4,900 acre area does not meet size criteria, the following is a determination of outstanding opportunities for solitude of that area of the unit.

The area ranges between about 1.3 to 2.8 miles wide (north-south) and 1 to 3.7 miles long. There is insufficient height and density of vegetation to provide screening for outstanding opportunities for solitude. With the mountain's higher plateau top, a visitor can experience a sense of being isolated within a limited area of this location, but the plateau top's small size and configuration, combined with its substantially near flat topography does not provide outstanding opportunities to experience solitude. The terrain below the plateau is more so broken up, but none of this area is of sufficient size relative to its orientation with the unit's boundaries to provide outstanding opportunities for solitude. The properties of the 4,900 acre area's various natural features – considered separately or in any combination -- do not offer outstanding opportunities for solitude.

4. Does the unit have outstanding opportunities for primitive and unconfined recreation?

Yes _____ No X N/A _____

Description: The two unnatural seeding areas are excluded from this determination. Although, technically, the above described remaining approximate 4,900 acre area does not meet size criteria, the following is a determination of outstanding opportunities for primitive and unconfined recreation of that area of the unit.

The primary activity is hunting of common game species (primarily chukar and deer), and its associated day hiking and general sightseeing. The unit does not possess any special or unique features to specifically draw visitors to it, albeit the visual contrast of the mountain's plateau-like top can spike a visitor's interest to experience its physically contrasting setting. These activities -- individually or in any combination – do not provide outstanding opportunities for primitive and unconfined recreation.

5. Does the unit have supplemental values?

Yes _____ No X N/A _____

Description:

Summary of Findings and Conclusion

Unit Name and Number: OR-034-098 — Table Mountain

Summary Results of Analysis:

- 1. Does the area meet any of the size requirements? X Yes No
- 2. Does the area appear to be natural? Yes X No
- 3. Does the area offer outstanding opportunities for solitude or a primitive and unconfined type of recreation? Yes X No NA
- 4. Does the area have supplemental values? Yes X No NA

Conclusion -- check one:

- The area, or a portion of the area, has wilderness character.
- X The area does not have wilderness character.

Prepared by: Robert Alward
Robert Alward, Wilderness Planner, contractor

Team Members:

<u>Mitch Thomas</u>	<u>2/14/10</u>
Mitch Thomas, Rangeland Management Specialist	Date
<u>Shaney Rockefeller</u>	<u>3/10/10</u>
Shaney Rockefeller, Soil Scientist	Date
<u>Gilman Wigglesworth</u>	<u>2/5/10</u>
Gilman Wigglesworth, Botanist, Vale District	Date
<u>Michelle Caviness</u>	<u>2/25/10</u>
Michelle Caviness, Wildlife Biologist, Vale District	Date
<u>Dave Draheim</u>	<u>2/10/10</u>
Dave Draheim, Outdoor Recreation Planner	Date
<u>Eian Ray</u>	<u>02/09/10</u>
Eian Ray, GIS Specialist, contractor	Date
<u>Brent Grasty</u>	<u>2/9/10</u>
Brent Grasty, GIS Coordinator	Date

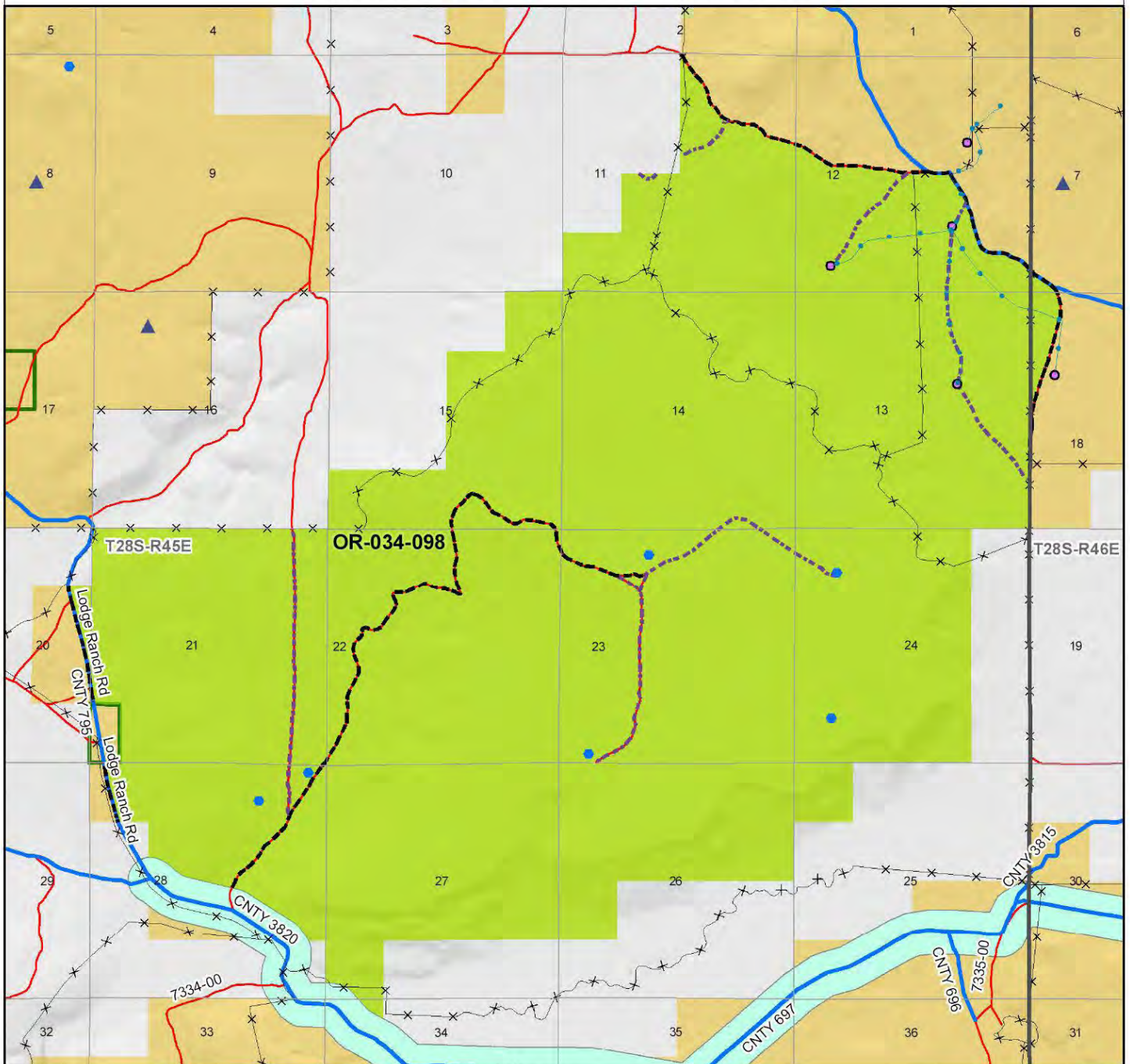
Approved by: Pat Ryan
Pat Ryan, Malheur Resource Area Field Manager

12/13/10
Date

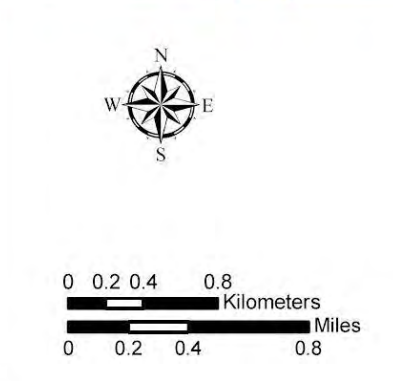
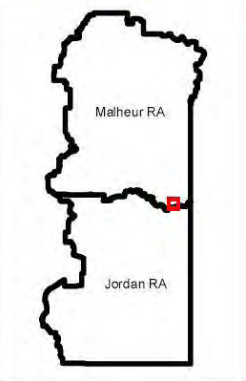
This form documents information that constitutes an inventory finding on wilderness characteristics. It does not represent a formal land use allocation or a final agency decision subject to administrative remedies under either 43 CFR parts 4 or 1610.5-2.

Wilderness Characteristics - Overview

Table Mountain - OR-034-098 - Map 1 of 2



Legend	
Developed Spring	Route Types - BLM Determination
Wildlife Guzzler	Boundary Road
Earthen Reservoir	Molybdenized Primitive Trail (MPT)
Pipeline	Discontinued Use
Trough	Routes - Outside Wild Char Unit
Fence	County
Storage Tank	Major Highway
Surface Mining Disturbance	BLM Numbered & Other Routes
Sage Grouse Lek	Land Ownership
Special Status Plant	Bureau of Land Management
BLM Wild Char Inventory Unit	State
Wilderness Study Area	Private
Mineral Material Site	Other Federal Land
Road/Utility Right-of-Way	
Major Water Body	



U.S. DEPARTMENT OF THE INTERIOR
 BUREAU OF LAND MANAGEMENT

VALE DISTRICT
 December 16, 2009
No warranty is made by the Bureau of Land Management as to the accuracy, reliability, or completeness of these data for individual or aggregate use with other data. Original data were compiled from various sources. This information may not meet National Map Accuracy Standards. This product was developed through digital means and may be updated without notification.
--FINAL--

