

Wilderness Inventory Unit Index of Documents
Swede Flat OR-034-087, 10 total pages

Page 1: Index Cover Sheet

[Page 2: Form 1 – Documentation of BLM Wilderness Inventory: Findings on Record](#)

[Page 5: Form 2 – Documentation of Current Wilderness Inventory Conditions](#)

[Page 8: Form 2 – Summary of Findings and Conclusion](#)

[Page 9: Wilderness Characteristics Overview – Swede Flat OR-034-087 Map 1 of 2](#)

[Page 10: Wilderness Characteristics-Land Treatments-Swede Flat OR-034-087 Map 2 of 2](#)

Prepared by:
U.S. Department of the Interior
Bureau of Land Management
Vale District Office
100 Oregon Street
Vale, Oregon 97918



H-6300-1-WILDERNESS INVENTORY MAINTENANCE IN BLM OREGON/WASHINGTON

APPENDIX B – INVENTORY AREA EVALUATION

Evaluation of Current Conditions:

- 1) Document and review the existing BLM wilderness inventory findings on file, if available, regarding the presence or absence of individual wilderness characteristics, using Form 1, below.
- 2) Consider relevant information regarding current conditions available in the office to identify and describe any changes to the existing information (use interdisciplinary (ID) team knowledge, aerial photographs, field observations, maps, etc.), and document your findings on Form 2, below.

When Citizen Information has been submitted regarding wilderness characteristics, document the submitted materials including: date of Submission; Name of District(s) and Field Office(s) Affected; Type of material Submitted (e.g. narrative, map, photo). Evaluate any submitted citizen information regarding the validity of proposed boundaries of the unit(s), the existence of roads and other boundary features, the size of the unit(s), and the presence or absence of wilderness characteristics based on relevant information available in the office (prior BLM inventories, ID team knowledge, aerial photographs, field observations, maps, etc.)

Conduct field reviews as necessary to verify information and to ascertain current conditions. Reach conclusions on current conditions including boundaries, size of areas and presence or absence of wilderness characteristics. Fully explain the basis for each conclusion on form 2, including any critical differences between BLM and citizen information.

Document your findings regarding current conditions for each inventoried area. Describe how the present conditions are similar to, or have changed from, the conditions documented in the original wilderness inventory. Document your findings on Form 2 for each inventory area. Cite to or attach data considered, including photographs, maps, GIS layers, field trip notes, project files, *etc.*

Year: 2010 **Unit Number/Name:** OR-034-087 -- Swede Flat

**FORM 1 -- DOCUMENTATION OF BLM WILDERNESS INVENTORY
FINDINGS ON RECORD**

1. Is there existing BLM wilderness inventory information on all or part of this area?

Yes No (If yes, and if more than one unit is within the area, list the names of those units.):

A.) Inventory Source(s) -- (X) Denotes all applicable BLM Inventory files, printed maps, or published BLM Decision documents with information pertaining to this unit.

Wilderness Inventories

- (X) 1978 – 1979 -- BLM Wilderness Inventory Units 3-14 of OR-03-02-22 Swede Flat (unpublished BLM documents in case files)
- (X) April 1979 – *Wilderness -- Proposed Initial Inventory – Roadless Areas and Islands Which Clearly Do Not have Wilderness Characteristics, Oregon and Washington*

Wilderness Decision Documents

- (X) August 1979 – *Wilderness Review – Initial Inventory, Final Decision on Public Lands Obviously Lacking Wilderness Characteristics and Announcement of Public Lands to be Intensively Inventoried for Wilderness Characteristics, Oregon and Washington* (green document)
- () October 1979 – *Wilderness Review – Intensive Inventory - Oregon, Proposed Decision on the Intensive Wilderness Inventory of Selected Areas* (grey document).
- () March 1980 – *Wilderness Review – Intensive Inventory; Final Decisions on 30 Selected Units in Southeast Oregon and Proposed Decisions on Other Intensively Inventoried Units in Oregon and Washington* (orange document)
- () November 1980 - *Wilderness Inventory – Oregon and Washington, Final Intensive Inventory Decisions* (brown document)
- () November 1981 *Stateline Intensive Wilderness Inventory Final Decision, Oregon, Idaho, Nevada, Utah* (tan document).

B.) Inventory Unit Name(s)/Number(s)

BLM 3-14 of OR-03-02-22 Swede Flat

C.) Map Name(s)/Number(s)

- Final Decision – Initial Wilderness Inventory Map, August 1979, Oregon
- Proposed Decision -- Intensive Wilderness Inventory of Selected Areas Map, October 1979, Oregon
- Intensive Wilderness Inventory Map, March 1980, Oregon
- Intensive Wilderness Inventory --Final Decisions Map, November 1980, Oregon.
- November, 1981 *Stateline Intensive Wilderness Inventory Final Decision, Oregon, Idaho, Nevada, Utah* (tan document).

D.) BLM District(s)/Field Office(s)

Vale District Office/ Malheur Field Office

2. BLM Inventory Findings on Record

(Existing inventory information regarding wilderness characteristics (if more than one BLM inventory unit is associated with the area, list each unit and answer each question individually for each inventory unit):

Inventory Source: See above.

Unit#/ Name	Size (historic acres)	Natural Condition? Y/N	Outstanding Solitude? Y/N	Outstanding Primitive & Unconfined Recreation? Y/N	Supplemental Values? Y/N
3-14 of OR-03-02-22 Swede Flat	6,600	N	*	*	*
TOTAL	6,600				

* -- These criteria were not specifically addressed since the unit was determined to not be in a natural condition.

H-6300-1-WILDERNESS INVENTORY MAINTENANCE IN BLM OREGON/WASHINGTON

APPENDIX B – INVENTORY AREA EVALUATION

Evaluation of Current Conditions:

- 1) Document and review the existing BLM wilderness inventory findings on file, if available, regarding the presence or absence of individual wilderness characteristics, using Form 1, below.
- 2) Consider relevant information regarding current conditions available in the office to identify and describe any changes to the existing information (use interdisciplinary (ID) team knowledge, aerial photographs, field observations, maps, etc.), and document your findings on Form 2, below.

When Citizen Information has been submitted regarding wilderness characteristics, document the submitted materials including: date of Submission; Name of District(s) and Field Office(s) Affected; Type of material Submitted (e.g. narrative, map, photo). Evaluate any submitted citizen information regarding the validity of proposed boundaries of the unit(s), the existence of roads and other boundary features, the size of the unit(s), and the presence or absence of wilderness characteristics based on relevant information available in the office (prior BLM inventories, ID team knowledge, aerial photographs, field observations, maps, etc.)

Conduct field reviews as necessary to verify information and to ascertain current conditions. Reach conclusions on current conditions including boundaries, size of areas and presence or absence of wilderness characteristics. Fully explain the basis for each conclusion on form 2, including any critical differences between BLM and citizen information.

Document your findings regarding current conditions for each inventoried area. Describe how the present conditions are similar to, or have changed from, the conditions documented in the original wilderness inventory. Document your findings on Form 2 for each inventory area. Cite to or attach data considered, including photographs, maps, GIS layers, field trip notes, project files, *etc.*

FORM 2 -- DOCUMENTATION OF CURRENT WILDERNESS INVENTORY CONDITIONS

Unit Name/ Number: OR-034-087 — Swede Flat

Description of Current Conditions: [Include land ownership, location, topography, vegetation features and summary of major human uses/activities.]

1. Is the unit of sufficient size?

Yes X No

Description: Refer to this inventory unit's associated Map 1 for its location. The unit has 6,406 acres of public land. The unit has the same boundary features as for the BLM late 1970's wilderness characteristics inventory. The difference in acreage is due to a more accurate means of determining area size since the late 1970's.

The unit's boundaries are BLM road 7360-00 on its east side, private land and County road 793 on its south side, private land parcels on its west side, and a road traversing public land on its north side. The boundary roads are mechanically maintained as needed to provide for relatively regular and continuous use.

2. Is the unit in a natural condition?

Yes No X N/A

Description: The terrain consists primarily of an elevated, mild sloped flatland area of the upper Cottonwood Creek drainage with mostly shallow drainages toward its north to the creek. In the other directions from the flatland area, the unit's topography is of rimrock and/or moderate to very steep slopes and incised short canyons which drain within either the Bully Creek watershed (to the unit's east and south) or within the Solder Creek and Dry Creek watersheds (to the unit's northwest and west). Elevations range from approximately 2,940 to 3,620 feet. The vegetation consists primarily of non-native grasses and sagebrush.

Refer to this inventory unit's associated Map 1 and Map 2 for human imprints. There are 12.2 miles of rangeland fence, 8.5 miles of 4 motorized primitive trails (MPTs), and a 5.2 mile buried pipeline system with 9 associated troughs (note: 5 miles of fence and 2 miles of pipeline were described in BLM's late 1970's inventory of the unit). Unlike during the late 1970's inventory, there presently remains no visual contrast from an approximate 2,880 acre disc-drilled seeding. However, on the upper mild-sloped to flat terrain associated with the Swede Flat creek watershed, there still remains some scattered locations of evident visual linear contrast associated with a 2003 approximate 700 acre brush beating project that is distributed over an extended area of several hundred more acres in size. Some of the observable linear surface disturbance is up to about 1.75 miles

towards the inner core of the unit). See this inventory unit's associated Map 2 for the project area. The still evident linear contrast locations recognizably detracts from a visual sense of naturalness within the unit, and collectively -- with the extent of fencing, pipeline/troughs and MPTs of the unit relative to the unit's size -- the unit has the appearance of being substantially affected by the imprints of humans to the average visitor. Presently, the unit does not appear to be affected primarily by the forces of nature to the average visitor, although, in part as explained above, for differing accumulative reasons than during the late 1970's.

3. Does the unit have outstanding opportunities for solitude?

Yes _____ No X N/A _____

Description: The unit lacks adequate size or density of vegetation to support sufficient screening for outstanding opportunities for solitude. The unit is 2 to 3.25 miles wide and about 3 to 3.25 miles long. Topographically, the unit has two primary types of features: the mild sloped upper flatland area of Cottonwood Creek watershed and the rim rock areas with their associated moderate to very steep sloped terrain with multiple short, incised drainages. Extension to the unit's west, east and south boundaries from the unit's interior rimrock and their associated incised drainage areas is variable – from about a quarter mile to as far as about 1.5 miles, with most typically not greater than a mile. The upper flatland area varies from about a mile to about 2.25 miles from the unit's north boundary road. While this topographic diversity within the unit provides for various settings where a visitor can experience a sense of being isolated, the overall dimensions and configuration of the unit relative its size -- combined with and compounded by the close proximity and relatively short dimensions of the unit's primary types of topographic features to the unit's boundaries -- precludes providing sufficient areas of overall size and topographic diversity for a visitor to have outstanding opportunities for solitude.

4. Does the unit have outstanding opportunities for primitive and unconfined recreation?

Yes _____ No X N/A _____

Description: Hunting for common game species (primarily deer and chukar) occurs in the unit. Other opportunities include hiking, horseback riding, photography, and general sightseeing. However, there are no special or unique features or activities that attract visitors to the inventory unit. Individually or in combinations the unit does not possess outstanding opportunities for primitive and unconfined recreation.

5. Does the unit have supplemental values?

Yes _____ No X N/A _____

Description: None known.

Summary of Findings and Conclusion

Unit Name and Number: OR-034-087 — Swede Flat

Summary Results of Analysis:



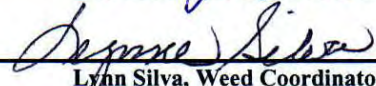
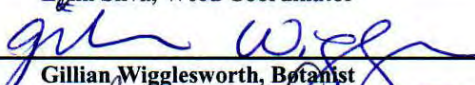
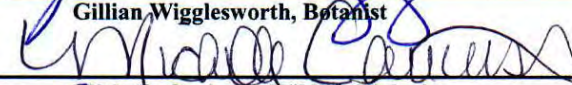
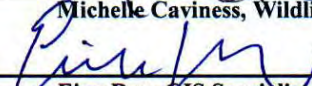
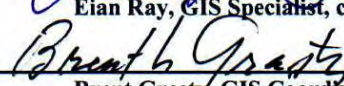
- 1. Does the area meet any of the size requirements? Yes No
- 2. Does the area appear to be natural? Yes No
- 3. Does the area offer outstanding opportunities for solitude or a primitive and unconfined type of recreation? Yes No NA
- 4. Does the area have supplemental values? Yes No NA

Conclusion -- check one:

- The area, or a portion of the area, has wilderness character.
- The area does not have wilderness character.

Prepared by: 
Robert Alward, Wilderness Planner, contractor

Team Members:

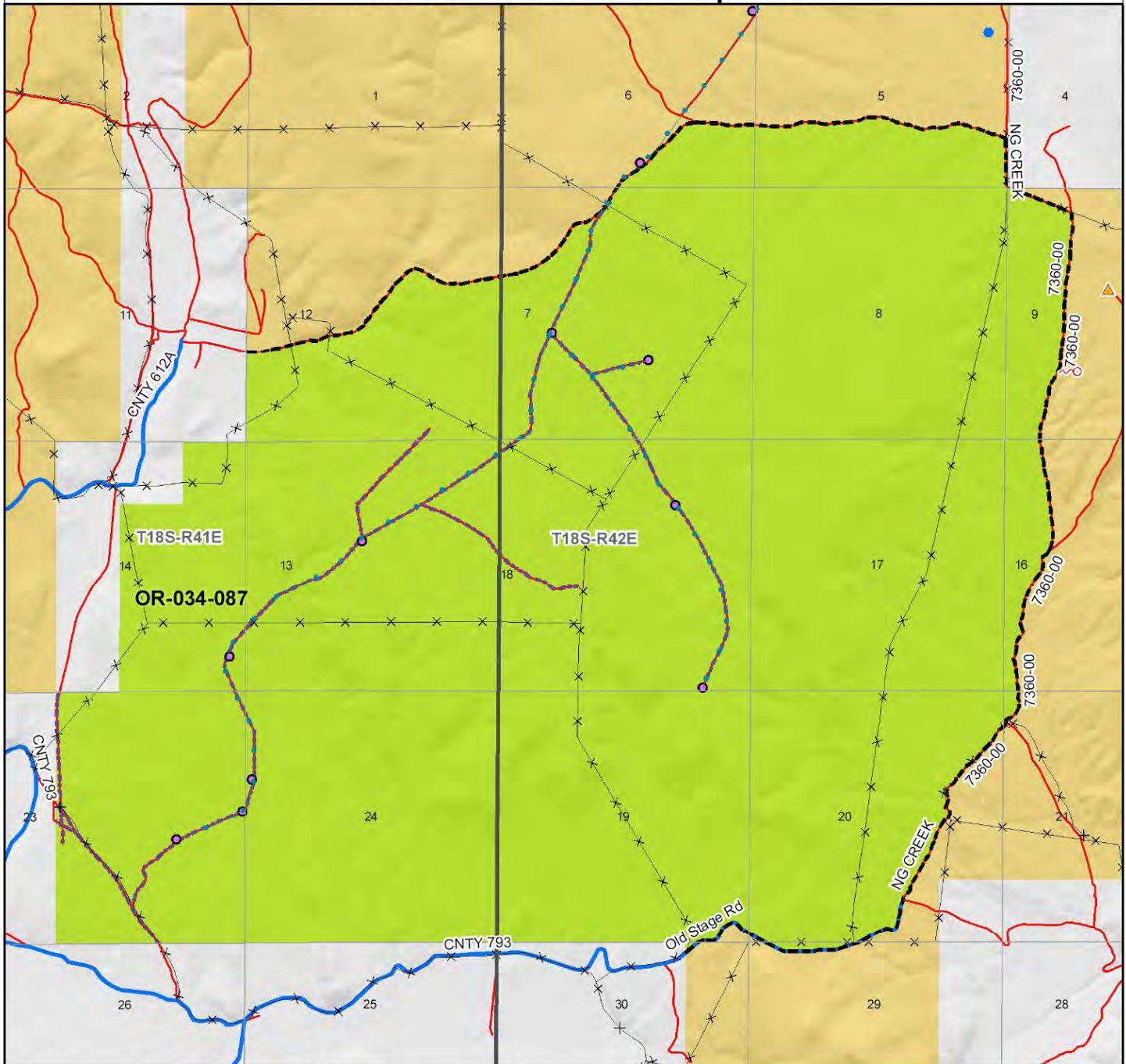
<u></u>	<u>12/7/10</u>
Bill Lutjens, Rangeland Management Specialist	Date
<u></u>	<u>12-6-10</u>
Dan Thomas, Range Technician	Date
<u></u>	<u>11-16-2010</u>
Lynn Silva, Weed Coordinator	Date
<u></u>	<u>12/6/10</u>
Gillian Wigglesworth, Botanist	Date
<u></u>	<u>12/16/10</u>
Michelle Caviness, Wildlife Biologist	Date
<u></u>	<u>12-6-10</u>
Eian Ray, GIS Specialist, contractor	Date
<u></u>	<u>12/9/10</u>
Brent Grasty, GIS Coordinator	Date

Approved by:  12/13/10
Pat Ryan, Malheur Resource Area Field Manager Date

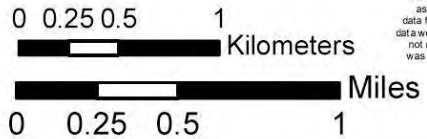
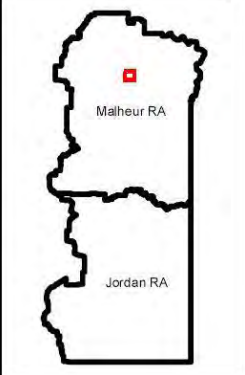
This form documents information that constitutes an inventory finding on wilderness characteristics. It does not represent a formal land use allocation or a final agency decision subject to administrative remedies under either 43 CFR parts 4 or 1610.5-2.

Wilderness Characteristics - Overview

Swede Flat - OR-034-087 - Map 1 of 2



- Legend**
- Developed Spring
 - Wildlife Guzzler
 - Earthen Reservoir
 - Pipeline
 - Trough
 - Fence
 - Storage Tank
 - Surface Mining Disturbance
 - Sage Grouse Lek
 - Special Status Plant
 - BLM Wild Char Inventory Unit
 - Wilderness Study Area
 - Mineral Material Site
 - Road/Utility Right-of-Way
 - Major Water Body
- Route Types - BLM Determination**
- Boundary Road
 - Motorized Primitive Trail (MPT)
 - Discontinued Use
- Routes - Outside Wild Char Unit**
- County
 - Major Highway
 - BLM Numbered & Other Routes
- Land Ownership**
- Bureau of Land Management
 - State
 - Private
 - Other Federal Land



U.S. DEPARTMENT OF THE INTERIOR
BUREAU OF LAND MANAGEMENT



VALE DISTRICT
July 14, 2010

No warranty is made by the Bureau of Land Management as to the accuracy, reliability or completeness of these data for individual or aggregate use with other data. Original data were compiled from various sources. This information may not meet National Map Accuracy Standards. This product was developed through digital means and may be updated without notification.

--FINAL--

