

Wilderness Inventory Unit Index of Documents
Sourdough Mountain OR-034-030, 29 total pages

Page 1: Index Cover Sheet

[Page 2: Form 1 – Documentation of BLM Wilderness Inventory: Findings on Record](#)

[Page 5: Form 2 – Documentation of Current Wilderness Inventory Conditions](#)

[Pages 10: Form 2 – Summary of Findings and Conclusion](#)

[Page 11: Wilderness Characteristics Overview – Sourdough Mountain OR-034-030 Map 1 of 2](#)

[Page 12: Wilderness Characteristics-Land Treatments-Sourdough Mountain OR-034-030 Map 2 of 2](#)

[Page 13: Wilderness Characteristics – BLM Photo Points – Sourdough Mountain Map & Log](#)

[Page 14: OR-034-030 Sourdough Mountain BLM Photos](#)

[Page 17: H-6300-1-Wilderness Inventory Maintenance in BLM Oregon/Washington
Appendix C – Road* Analysis: BLM 7326-0-000](#)

[Page 21: H-6300-1-Wilderness Inventory Maintenance in BLM Oregon/Washington
Appendix C – Road* Analysis: BLM 7322-0-100](#)

[Page 26: H-6300-1-Wilderness Inventory Maintenance in BLM Oregon/Washington
Appendix C – Road* Analysis: BLM 7326-0-0A0](#)

Prepared by:
U.S. Department of the Interior
Bureau of Land Management
Vale District Office
100 Oregon Street
Vale, Oregon 97918



H-6300-1-WILDERNESS INVENTORY MAINTENANCE IN BLM OREGON/WASHINGTON

APPENDIX B – INVENTORY AREA EVALUATION

Evaluation of Current Conditions:

1) Document and review the existing BLM wilderness inventory findings on file, if available, regarding the presence or absence of individual wilderness characteristics, using Form 1, below.

2) Consider relevant information regarding current conditions available in the office to identify and describe any changes to the existing information (use interdisciplinary (ID) team knowledge, aerial photographs, field observations, maps, etc.), and document your findings on Form 2, below.

When Citizen Information has been submitted regarding wilderness characteristics, document the submitted materials including: date of Submission; Name of District(s) and Field Office(s) Affected; Type of material Submitted (e.g. narrative, map, photo). Evaluate any submitted citizen information regarding the validity of proposed boundaries of the unit(s), the existence of roads and other boundary features, the size of the unit(s), and the presence or absence of wilderness characteristics based on relevant information available in the office (prior BLM inventories, ID team knowledge, aerial photographs, field observations, maps, etc.)

Conduct field reviews as necessary to verify information and to ascertain current conditions. Reach conclusions on current conditions including boundaries, size of areas and presence or absence of wilderness characteristics. Fully explain the basis for each conclusion on form 2, including any critical differences between BLM and citizen information.

Document your findings regarding current conditions for each inventoried area. Describe how the present conditions are similar to, or have changed from, the conditions documented in the original wilderness inventory. Document your findings on Form 2 for each inventory area. Cite to or attach data considered, including photographs, maps, GIS layers, field trip notes, project files, *etc.*

Year: 2009 **Unit Number/Name:** OR-034-030 -- Sourdough Mountain

**FORM 1 -- DOCUMENTATION OF BLM WILDERNESS INVENTORY
FINDINGS ON RECORD**

1. Is there existing BLM wilderness inventory information on all or part of this area?

Yes No (If yes, and if more than one unit is within the area, list the names of those units.):

A.) Inventory Source(s) -- (X) Denotes all applicable BLM Inventory files, printed maps, or published BLM Decision documents with information pertaining to this unit.

Wilderness Inventories

- (X) 1978-1980 --- BLM Wilderness Inventory Unit OR-03-04-04 Sourdough Mountain 3-310 (unpublished BLM documents, District files location is presently unknown)
- (X) April 1979 – *Wilderness -- Proposed Initial Inventory – Roadless Areas and Islands Which Clearly Do Not have Wilderness Characteristics, Oregon and Washington*

Wilderness Decision Documents

- (X) August 1979 – *Wilderness Review – Initial Inventory, Final Decision on Public Lands Obviously Lacking Wilderness Characteristics and Announcement of Public Lands to be Intensively Inventoried for Wilderness Characteristics, Oregon and Washington* (green document)
- () October 1979 – *Wilderness Review – Intensive Inventory - Oregon, Proposed Decision on the Intensive Wilderness Inventory of Selected Areas* (grey document).
- () March 1980 – *Wilderness Review – Intensive Inventory; Final Decisions on 30 Selected Units in Southeast Oregon and Proposed Decisions on Other Intensively Inventoried Units in Oregon and Washington* (orange document)
- () November 1980 - *Wilderness Inventory – Oregon and Washington, Final Intensive Inventory Decisions* (brown document)
- () November 1981 *Stateline Intensive Wilderness Inventory Final Decision, Oregon, Idaho, Nevada, Utah* (tan document).

B.) Inventory Unit Name(s)/Number(s)

BLM OR-03-04-04, Sourdough Mountain 3-310

C.) Map Name(s)/Number(s)

- (X) Final Decision – Initial Wilderness Inventory Map, August 1979, Oregon
- () Proposed Decision -- Intensive Wilderness Inventory of Selected Areas Map, October 1979, Oregon
- () Intensive Wilderness Inventory Map, March 1980, Oregon
- () Intensive Wilderness Inventory --Final Decisions Map, November 1980, Oregon.
- () November, 1981 *Stateline Intensive Wilderness Inventory Final Decision, Oregon, Idaho, Nevada, Utah* (tan document).

D.) BLM District(s)/Field Office(s)

Vale District Office/ Malheur Field Office

2. BLM Inventory Findings on Record

(Existing inventory information regarding wilderness characteristics (if more than one BLM inventory unit is associated with the area, list each unit and answer each question individually for each inventory unit):

Inventory Source: See above.

Unit#/Name	Size (historic acres)	Natural Condition? Y/N	Outstanding Solitude? Y/N	Outstanding Primitive & Unconfined Recreation? Y/N	Supplemental Values? Y/N
(3-310) OR-03-04-04 -- Sourdough Mountain	21,800	*	*	*	*
TOTAL	21,800				

* -- Specific determinations for these criteria for 3-310 could not be found in district inventory records. The files refer the reader to the “PPL Conclusion”, which can not be located in the district office. All 3-300 series wilderness characteristics units of the Vale District were part of an accelerated, separate inventory effort, related to a PP & L 500 kV transmission line proposal of 1977-78. The statewide decision map of the August 1979 document, *Wilderness Review – Initial Inventory, Final Decision on Public Lands Obviously Lacking Wilderness Characteristics and Announcement of Public Lands to be Intensively Inventoried for Wilderness Characteristics, Oregon and Washington*, identifies the unit as previously not meeting wilderness characteristics, thus not subject to further review.

H-6300-1-WILDERNESS INVENTORY MAINTENANCE IN BLM OREGON/WASHINGTON

APPENDIX B – INVENTORY AREA EVALUATION

Evaluation of Current Conditions:

1) Document and review the existing BLM wilderness inventory findings on file, if available, regarding the presence or absence of individual wilderness characteristics, using Form 1, below.

2) Consider relevant information regarding current conditions available in the office to identify and describe any changes to the existing information (use interdisciplinary (ID) team knowledge, aerial photographs, field observations, maps, etc.), and document your findings on Form 2, below.

When Citizen Information has been submitted regarding wilderness characteristics, document the submitted materials including: date of Submission; Name of District(s) and Field Office(s) Affected; Type of material Submitted (e.g. narrative, map, photo). Evaluate any submitted citizen information regarding the validity of proposed boundaries of the unit(s), the existence of roads and other boundary features, the size of the unit(s), and the presence or absence of wilderness characteristics based on relevant information available in the office (prior BLM inventories, ID team knowledge, aerial photographs, field observations, maps, etc.)

Conduct field reviews as necessary to verify information and to ascertain current conditions. Reach conclusions on current conditions including boundaries, size of areas and presence or absence of wilderness characteristics. Fully explain the basis for each conclusion on form 2, including any critical differences between BLM and citizen information.

Document your findings regarding current conditions for each inventoried area. Describe how the present conditions are similar to, or have changed from, the conditions documented in the original wilderness inventory. Document your findings on Form 2 for each inventory area. Cite to or attach data considered, including photographs, maps, GIS layers, field trip notes, project files, *etc.*

FORM 2 -- DOCUMENTATION OF CURRENT WILDERNESS INVENTORY CONDITIONS

Unit Number/Name: **OR-034-030 – Sourdough Mountain**

Note: In February, 2004, the Vale District received from Oregon Natural Desert Association (ONDA) its evaluation of wilderness characteristics for what ONDA names its 92,556-acre “Freezeout Ridge Proposed WSA”. For reference, a hard copy of ONDA’s proposal is retained in this unit’s file. Information provided by ONDA’s proposal was considered and incorporated as appropriate for this BLM Wilderness Characteristics Inventory maintenance. OR-034-030 represents only a portion (15,867 acres) of ONDA’s proposal. ONDA’s proposal includes basically five 1970’s BLM inventory units (3-52, 3-310, 3-51, 3-50, and 3-65) which, respectively, are currently associated with the following BLM Wilderness Characteristic Inventory maintenance units: OR-034-026, OR-034-030, OR-034-027, OR-034-028, and OR-034-045.

For BLM unit OR-034-030, the differences between BLM and ONDA regarding inventory unit boundary features are that, unlike ONDA’s proposal, BLM concludes that BLM routes 7326-0-00 (ONDA’s route W14b), 7326-0-0A0 (ONDA route W14a), and 7322-0-100 (ONDA’s route W13) are roads (not motorized primitive trails [or which what ONDA terms a “way”]). Refer to each of three of this inventory unit’s Road Analysis forms -- and their associated BLM photographs, Photo Points Map/Log and photos -- for additional documentation.

Description of Current Conditions: [Include land ownership, location, topography, vegetation features and summary of major human uses/activities.]

1. Is the unit of sufficient size?

Yes X No

Description: Refer to this inventory unit’s associated Map 1 for the unit’s location. The boundary of the 15,867 acre unit is nearly the same as for the inventory unit identified in the late 1970’s, noting that presently the ROW for the PP & L 500 kV transmission line is the unit’s south boundary. Elsewhere, the unit is bounded on the east by private land and BLM road 7320-0-00, private land and road 7326-0-0A0 on the west, and private land and road 7326-0-00 on the north. The BLM natural-surfaced roads are in reasonably good passable condition when not water saturated, receiving a measure of mechanical maintenance as needed to keep them passable for regular and continuous use.

2. Is the unit in a natural condition?Yes No N/A

Description: The broad, gradually sloped upper features of Sourdough Mountain and its notably more incised drainages are the central geographic focus of this unit. Elevations range from the mountain's top of 4,747 feet to about 3,220 feet along the unit's east boundary. The prominent Negro Rock igneous spire is in the unit's northeast corner. Vegetation consists of typical native high desert shrub and both native and non-native grass species.

Refer to this inventory unit's associated Map 1 and Map 2 for human imprints in the unit. They include 7.3 miles of rangeland fence, two small fenced enclosures, 4 developed springs, 6 earthen reservoirs, 2.0 miles of buried water pipeline with 2 associated troughs, 15.9 miles of 9 motorized primitive trails (MPTs), a quarter mile of an abandoned vehicle route, a site of remnant mineral exploration surface disturbance (near middle of section 35; not displayed on Map 1 or Map 2), and an artesian well in the southeast 1/4 of section 35 (not displayed on Map 1 or Map 2). There remains no visual evidence today of vegetation treatments which occurred between 1966 and 1973 (plow/disc drill seedings and a chemical treatment). When considered individually and collectively relative to the unit's size and given the broad distribution and nominal extent and nature of these imprints, the unit appears to be affected primarily by the forces of nature with the imprint of humans being substantially unnoticeable to the average visitor.

BLM documents the presence of 4 MPTs within this unit for which no ONDA documentation is provided. Except for ONDA's stated vehicle routes, its proposal does not quantify or indicate the location of other known man-made features of the Association's proposed WSA while concluding that the unit appears primarily affected by the forces of nature with the imprint of man's work substantially unnoticeable. For comparative reference, refer to the BLM Map1, Map 2 and to ONDA's proposal, all located in this unit's inventory file folder.

3. Does the unit have outstanding opportunities for solitude?Yes No N/A

Description: The unit's width and length vary throughout the unit, ranging respectively between approximately 1.5 to 4.5 miles wide (east-west) and from less than a mile to approximately 6 miles long. Vegetation provides for no screening of visitors of the unit. The unit's western half (an extensive area of the unit's higher elevations) has slight to moderate topographic gradients. There is notably steep terrain associated within the eastern half of the unit, although a portion of it is excluded by a 1,280 acre private parcel and which constitutes part of the unit's east boundary. With these features -- the unit's higher and isolated extensive and somewhat gentler terrain in its west combined with the steep, incised nature of multiple drainages in its east -- the unit's topographic diversity relative to its configuration and size provides outstanding opportunities for solitude.

ONDA states that its substantially larger “Freezeout Ridge Proposed WSA” possesses outstanding opportunities for solitude. Based on the current results of BLM’s wilderness characteristics inventory maintenance, BLM does not have an inventory unit that approaches the size of ONDA’s in this general area. While drawing no conclusion regarding solitude within ONDA’s proposal, BLM recognizes that a unit of the general size, configuration and topography as ONDA’s proposal may possess attributes which may result in providing for outstanding opportunities of solitude.

4. Does the unit have outstanding opportunities for primitive and unconfined recreation?

Yes _____ No X N/A _____

Description: Dispersed recreational activities include hiking, horseback riding, photography, some hunting of common upland and big game species (chukar, deer, some antelope), and general sightseeing. None of these activities are considered outstanding in quality. The natural character of the unit does provide for overnight backpacking activities, although this is not a typical use of the area nor is it considered outstanding as a primitive and unconfined recreational opportunity. A visually striking feature of the unit is Negro Rock, a prominent igneous spire protruding from its setting’s rising terrain in the unit’s northeast corner, is about a mile removed from the unit’s boundary road. The prominence of the spire draws visitors’ visual attention to it, including for photography, yet physically it can not be climbed or otherwise inspire other recreational pursuits associated with it. While photography of this feature is considered a high value recreational opportunity, it is not an outstanding photographic opportunity. None of these recreational activities of the unit, individually or collectively, provide outstanding opportunities for primitive and unconfined recreation within the unit.

ONDA states that due to its substantially larger size, its “Freezeout Ridge Proposed WSA” possesses outstanding opportunities for primitive recreation. ONDA also states that BLM indicated the public lands of the 1970’s BLM units that presently are included within ONDA’s proposed WSA “were not listed outstanding because each of the separate units was too small in size or too narrow”. BLM can find no BLM or other documentation that supports ONDA’s conclusion for the 1970’s inventory unit (3-310 of OR-03-04-04), which is essentially the same area and size as BLM’s current OR-034-030 inventory unit. Furthermore, Form 1 indicates that BLM currently can find no documentation about determination of wilderness characteristics for the original BLM inventory unit 3-310, except for size. In the 1970’s, BLM did not recognize any of its five inventory units affected presently by ONDA’s “Freezeout Ridge Proposed WSA” as possessing outstanding opportunities for primitive and unconfined recreation; nor do the present inventory units affecting ONDA’s proposed WSA possess outstanding opportunities. BLM makes no determination of whether larger size – alone as ONDA contends, and/or considering other possible attributes – equates to outstanding opportunities for primitive and unconfined recreation within ONDA’s “Freezeout Ridge Proposed WSA”.

ONDA indicates the presence of riparian zones and sage-steppe habitats within its proposed WSA provide outstanding opportunities for wildlife viewing, bird watching and

hunting. BLM does not concur that the presence of these habitats equates to outstanding opportunities for wildlife viewing, bird watching or hunting within OR-034-030. While recognizing the presence of varying wildlife/bird habitat niche settings within the BLM inventory unit for viewing and hunting, (e.g., a major ridgeline, rolling terrain, some substantially nearly flat area, and spring sites), BLM has determined the unit's habitats and animal species present are not so unique or otherwise possess features – individually or in combination -- which result in these recreation activity opportunities being outstanding within the inventory unit.

5. Does the unit have supplemental values?

Yes X No N/A

Description: Two separate small sites of Biddle's lupine, a BLM special status plant species, are located adjacent to two boundary roads of the inventory unit. BLM has documentation of 3 sage grouse leks in the inventory unit. Sage grouse is a BLM special status animal species.

ONDA states that it's proposed WSA may provide habitat for the Mojave Black-collared Lizard, Desert Horned Lizard, Ground Snake, Ferruginous Hawk, Pygmy Rabbit, and White-tailed Antelope Squirrel, which ONDA's February 2004 submission to the Vale District declares are listed as "sensitive species" by the State of Oregon. As of 2009, the Mohave Black-collard Lizard, Desert Horned Lizard, Ground Snake and the White-tailed Antelope Squirrel were not considered sensitive by either the state of Oregon, U.S. Fish and Wildlife Service or BLM. Although not sensitive species, BLM has documented the presence of Mojave Black-collared Lizard and Desert Horned Lizard within this proposed unit. BLM acknowledges that habitat requirements may exist for the Ground Snake, Ferruginous Hawk, Pygmy Rabbit, and White-tailed Antelope Squirrel; however, neither ONDA nor any other entity has provided BLM official documentation confirming the presence of these species within this inventory unit.

Summary of Findings and Conclusion

Unit Name and Number: OR-034-030 – Sourdough Mountain

Summary Results of Analysis:

- 1. Does the area meet any of the size requirements? Yes No
- 2. Does the area appear to be natural? Yes No
- 3. Does the area offer outstanding opportunities for solitude or a primitive and unconfined type of recreation? Yes No NA
- 4. Does the area have supplemental values? Yes No NA

Conclusion -- check one:

- The area, or a portion of the area, has wilderness character.
- The area does not have wilderness character.

Prepared by: Robert Alward
Robert Alward, Wilderness Planner contractor

Team Members:

<u>Steve Christensen</u>	2-23-2010
Steve Christensen, Rangeland Management Specialist	Date
<u>Shaney Rockefeller</u>	3/10/10
Shaney Rockefeller, Soil Scientist	Date
<u>Dave Draheim</u>	2/10/10
Dave Draheim, Outdoor Recreation Planner	Date
<u>Jonathan Westfall</u>	02/11/2010
Jon Westfall, Geologist	Date
<u>Eian Ray</u>	02/11/10
Eian Ray, GIS Specialist, contractor	Date
<u>Brent Grasty</u>	3/11/2010
Brent Grasty, GIS Coordinator	Date

(NOTE: Previous staff members who reviewed this unit include Botanist Jean Finley (retired 7/2008), and Wildlife Biologist Technician Sandy Vistine Ambor (transferred 8/2008)).

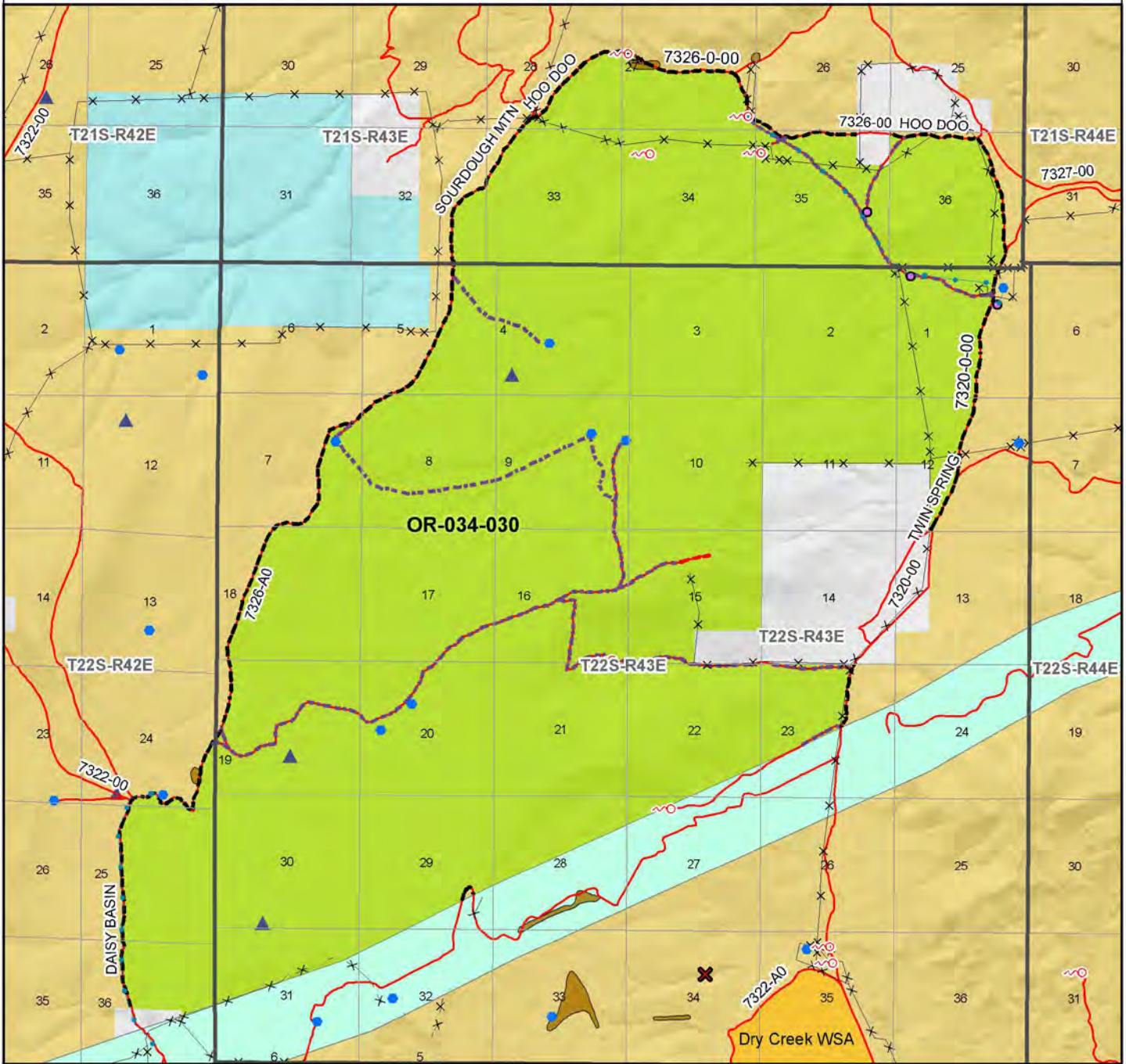
Approved by:

Pat Ryan 3/30/2010
Pat Ryan, Malheur Resource Area Field Manager Date

This form documents information that constitutes an inventory finding on wilderness characteristics. It does not represent a formal land use allocation or a final agency decision subject to administrative remedies under either 43 CFR parts 4 or 1610.5-2.

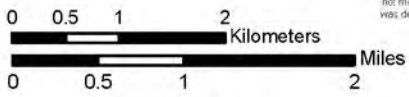
Wilderness Characteristics - Overview

Sourdough Mountain - OR-034-030 - Map 1 of 2



Legend

- | | |
|---|--|
| <ul style="list-style-type: none"> Developed Spring Wildflower Guzzler Earth Reservoir Pipeline Trough Fence Storage Tank Surface Mining Disturbance Sage Grouse Lek Special Status Plant BLM Wild Char Inventory Unit Wilderness Study Area Mineral Material Site Road/Utility Right-of-Way Major Water Body | <ul style="list-style-type: none"> Route Types - BLM Determination Boundary Road Motorized Primitive Trail (MPT) Discontinued Use Routes - Outside Wild Char Unit County Major Highway BLM Numbered & Other Routes Land Ownership Bureau of Land Management State Private Other Federal Land |
|---|--|



U.S. DEPARTMENT OF THE INTERIOR
BUREAU OF LAND MANAGEMENT

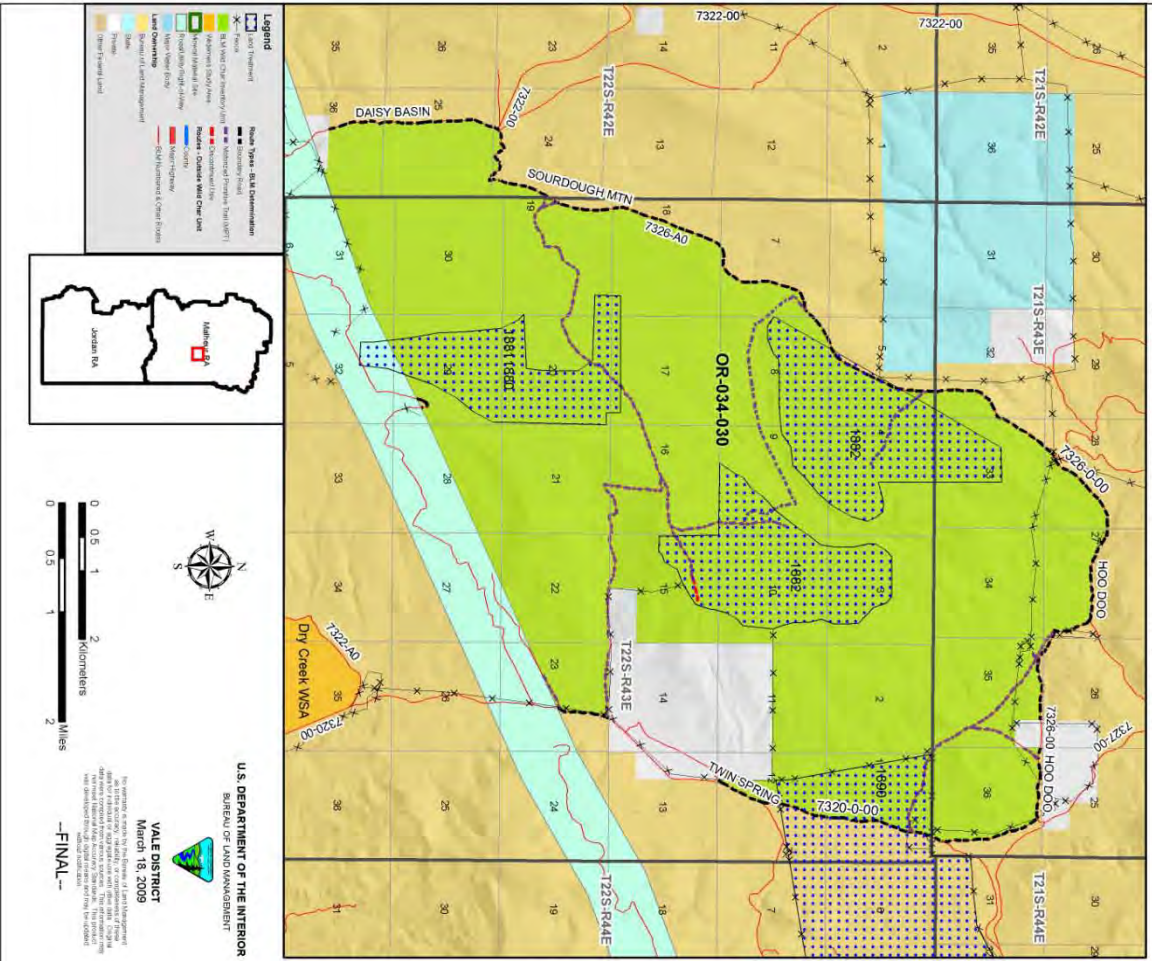


VALE DISTRICT
March 18, 2009

No warranty is made by the Bureau of Land Management as to the accuracy, reliability, or completeness of these data for individual or aggregate use with other data. Original data were compiled from various sources. This information may not meet National Map Accuracy Standards. This product was developed through digital means and may be updated without notification.

--FINAL--

Wilderness Characteristics - Land Treatments
Sourdough Mountain - OR-034-030 - Map 2 of 2

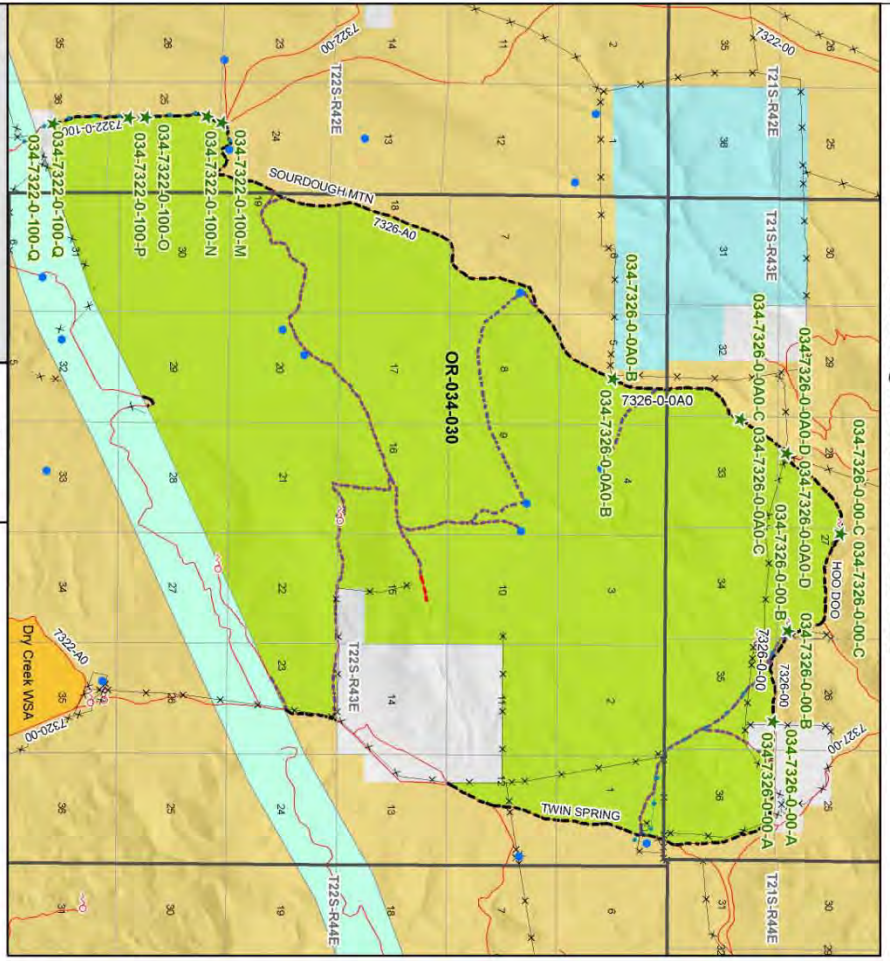


Wilderness Characteristics - Land Treatments
Sourdough Mountain - OR-034-030 - Map 2 of 2

OBJECTID*	PROJ. NAME	PROJ. TYPE	SEED GROUP	DATE COMPLETED
1880	FREEZEOUT LAKE SEEDING	Plow/Disc	Not Applicable	1971
1881	FREEZEOUT LAKE SEEDING	Drill Seeding	Unknown	1971
1882	FREEZEOUT BUTTE BRUSH CONTROL	Chemical Treatment	Not Applicable	1973
1890	RYE FIELD SEEDING	Drill Seeding	Unknown	1966

Note: The Land Treatments represented by many blue dots on the map to the left are labeled with the treatments' ObjectIDs listed in the first field of the Land Treatments table shown above. Multiple types of treatments may have been applied to the same area. For example, one treatment area may have been plowed and drill seeded - a record is shown in the table for each type of treatment.

Wilderness Characteristics - BLM Photo Points Sourdough Mountain - OR-034-030



Legend

- Developed Springs
- Wildlife Overlap
- Eastern Shoreline
- Pipeline
- Historic Mineral Site
- Road (Utility ROW)
- Wilderness Study Area
- BLM Wild Char Inventory Photo Point
- BLM Wild Char Inventory Trail
- Boundary
- Inventory Photo Point
- BLM Wild Char Inventory Photo Point
- BLM Wild Char Inventory Trail
- BLM Wild Char Inventory Photo Point
- BLM Wild Char Inventory Trail

**U.S. DEPARTMENT OF THE INTERIOR
BUREAU OF LAND MANAGEMENT**

VALE DISTRICT
March 17, 2009

-FINAL-

Wilderness Characteristics - BLM Photo Points Sourdough Mountain - OR-034-030

PHOTO_LOCATION*	DIRECTION	PHOTO_TYPE	PHOTO_DATE
034-7326-0-0A0-B	NE	Route	20080620
034-7326-0-0A0-B	SW	Route	20080620
034-7326-0-0A0-C	N	Route	20080620
034-7326-0-0A0-C	W	Route	20080620
034-7326-0-0A0-C	S	Scenery	20080620
034-7326-0-0A0-C	E	Route	20080620
034-7326-0-00-C	E	Route	20080620
034-7326-0-00-C	W	Route	20080620
034-7326-0-00-C	E	Route	20080620
034-7326-0-00-B	SE	Route	20080620
034-7326-0-00-B	N	Route	20080620
034-7326-0-00-B	E	Route	20080620
034-7326-0-00-A	E	Route	20080620
034-7326-0-00-A	W	Route	20080620
034-7326-0-0A0-D	S	Route	20080620
034-7326-0-0A0-D	E	Route	20080620
034-7326-0-0A0-D	N	Route	20080620
034-7322-0-100-M	N	Route	20080724
034-7322-0-100-M	S	Route	20080724
034-7322-0-100-N	S	Route	20080724
034-7322-0-100-N	S	Route	20080724
034-7322-0-100-P	N	Route	20080724
034-7322-0-100-P	E	Project	20080724
034-7322-0-100-Q	S	Route	20080724
034-7322-0-100-Q	N	Route	20080724

Note: The BLM Wild Char PhotoPoints displayed on the map are labeled with their Photo Locations. The BLM Photo Log table shown above lists the photos taken at their respective Photo Locations. Multiple photos may be taken at each Photo Location. Scenery and Project Photo Type pictures have their photo names provided in the Comments field.

OR-034-030 Sourdough Mountain Page 1



034-7326-0-00-A-E.jpg



034-7326-0-00-A-W.jpg



034-7326-0-00-B-NE.jpg



034-7326-0-00-B-NW.jpg



034-7326-0-00-B-SW.jpg



034-7326-0-00-C-E.jpg



034-7326-0-00-C-E1.jpg



034-7326-0-00-C-W.jpg



034-7326-0-0A0-B-NE.jpg



034-7326-0-0A0-B-SW.jpg



034-7326-0-0A0-C-N.jpg



034-7326-0-0A0-C-S.jpg



034-7326-0-0A0-D-E.jpg



034-7326-0-0A0-D-N.jpg



034-7326-0-0A0-D-S.jpg



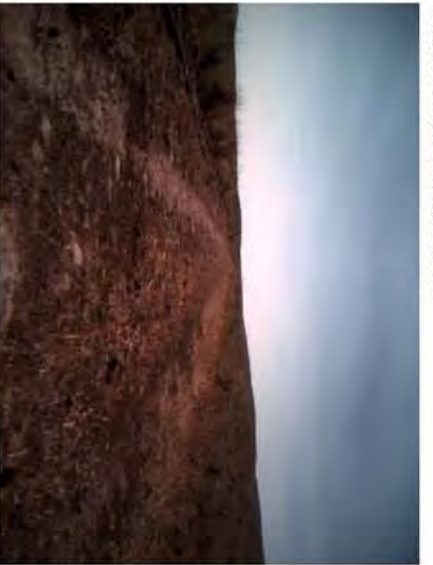
7322-0-100-M-N.JPG.jpg



7322-0-100-M-S.JPG.jpg



7322-0-100-N-N.JPG.jpg



7322-0-100-N-S.JPG.jpg



7322-0-100-P-N.JPG.jpg



7322-0-100-Q-S1.JPG.jpg

OR-034-030 Sourdough Mountain Page 3



7322-0-100-O-N.JPG.jpg



7322-0-100-Q-N.JPG.jpg



OR-034-030-P-E.JPG.jpg



7322-0-100-O-S.JPG.jpg



7322-0-100-Q-S.JPG.jpg

H-6300-1-WILDERNESS INVENTORY MAINTENANCE IN BLM OREGON/WASHINGTON

APPENDIX C – ROAD* ANALYSIS

(Factors to consider when determining whether a route is a road for wilderness inventory purposes.)

Wilderness Inventory Unit Name/Number: OR-034-030 – Sourdough Mountain

NOTE: This unit is affected by ONDA’s Freezeout Ridge proposed WSA.

Route Name and/or Identifier (*Include Transportation Plan Identifier, if known; include route number supplied by citizen information when available*):

BLM 7326-0-00 (alias 034-7326-0-00).

(This route is identified by ONDA on its Road Log as its “W14b und”, for which ONDA provides no descriptive of what “und” means or represents. That said, ONDA’s map for its proposal depicts its W14b as partially a “road” and partially as “subunit boundary”.)

I. LOCATION: Refer to attached map (is the north boundary of this BLM inventory unit).
List photo point references (if applicable): Refer to this BLM inventory unit’s associated hard copy of its BLM Photo Points map, and affiliated Photo Log and photos - retained in this unit’s permanent hard copy file, and electronically retained under this unit’s subfolder Final Findings/GIS Products. Any applicable ONDA photos and affiliated Photo Log are electronically retained under Wilderness Characteristics/S/Citizen Proposals.

II. CURRENT PURPOSE OF ROUTE:

(Examples: Rangeland/Livestock Improvements (stock tank, developed spring, reservoir, fence, corral), Inholdings (ranch, farmhouse), Mine Site, Concentrated Use Site (camp site), Utilities (transmission line, telephone, pipeline), Administrative (project maintenance, communication site, vegetation treatment).)

Describe: This is a route used regularly in conjunction with BLM 7326-0-0A0 for access to certain rangeland/livestock improvements (earthen reservoirs) within this inventory unit and for additional livestock developments associated with abutting BLM inventory units OR-034-026, OR-034-027 for management of livestock, maintenance of the projects, and monitoring of associated activities. This route also provides connective access to the abutting private land (and which also serves as a feature of this unit’s boundary). This route provides connective access for 7326-0-0A0 which -- during much of the calendar year – gains access to popular dispersed camping areas associated with the Sourdough Ridge area.

III. ROAD RIGHT-OF-WAY:

Is a road right-of-way associated with this route?

Yes _____ No **X** Unknown _____

IV. CONSTRUCTION

Yes **X** No _____

Examples: Paved _____ Bladed **X** Graveled _____ Roadside
Berms _____ Cut/Fill _____ Other _____

Describe: Date of construction is unknown, but occurred prior to the late 1970's BLM wilderness characteristics inventory. Present visual evidence of blading is likely more so from maintenance activities of this route since the route's construction.

V. IMPROVEMENTS

Yes _____ No **X**

By Hand Tools _____ By Machine _____

Examples: Culverts _____ Stream Crossings _____ Bridges _____
Drainage _____ Barriers _____ Other _____

Describe:

VI. MAINTENANCE:

A. Is their Evidence or Documentation of Maintenance using hand tools or machinery? Yes **X** No _____

If yes: Hand Tools (Y/N) _____ Machine (Y/N) **Y**

Explain: This route receives mechanical maintenance as needed so to provide for regular and continuous use during most of the calendar year.

B. If the route is in good condition, but there is no evidence of maintenance, would mechanical maintenance with hand tools or machines be approved by BLM in the event this route became impassable?

Yes _____ No _____

Comments:

VII. REGULAR AND CONTINUOUS USE:Yes X No _____

Describe evidence (vehicle tracks observed) and other rationale for whether use has occurred and will continue to occur on a relatively regular basis:

BLM personnel and permittees use this route many times throughout the summer to maintain projects (developed springs and earthen reservoirs on public and private lands), administer grazing, and to access other areas. This route provides connective access for 7326-0-0A0 which -- during much of the calendar year -- gains access to popular dispersed camping areas associated the with Sourdough Ridge area.

VIII. CONCLUSION:

To meet the definition of a road, items IV or V, and VI-A or B, and VII must be checked yes.

Road: Yes X No _____

Explanation: Meets criteria for road, as described and explained, above.

Evaluator(s): Shaney Rockefeller Date: 4/6/09
 Shaney Rockefeller, Soil Scientist

Steve Christensen Date: 4-6-2009
 Steve Christensen, Rangeland Management Specialist

* **road:** An access route which has been **improved and maintained** by **mechanical means** to insure **relatively regular and continuous use**. A way maintained solely by the passage of vehicles does not constitute a road.

a. **“Improved and maintained”** – Actions taken physically by people to keep the road open to vehicle traffic. “Improved” does not necessarily mean formal construction. “Maintained” does not necessarily mean annual maintenance.

b. **“Mechanical means”** – Use of hand or power machinery or tools.

c. **“Relatively regular and continuous use”** – Vehicular use that has occurred and will continue to occur on a relatively regular basis. Examples are: access roads for equipment to maintain a stock water tank or other established water sources; access roads to maintained recreation sites or facilities; or access roads to mining claims.

Following is the definition from Glossary of OSO 7-3-2007 Draft H-6300-1:

road: The BLM will continue to base the definition of what constitutes a “road” from the FLPMA’s legislative history. The language below is from the House of Representatives Committee Report 94-1163, page 17, dated May 15, 1976, on what became the FLPMA. It is the only statement regarding the definition of a road in the law or legislative history.

“The word ‘roadless’ refers to the absence of roads which have been improved and maintained by mechanical means to insure relatively regular and continuous use. A way maintained solely by the passage of vehicles does not constitute a road.”

The BLM previously adopted and will continue to use the following sub-definitions of certain words and phrases in the BLM road definition stated above:

a. **“Improved and maintained”** – Actions taken physically by people to keep the road open to vehicle traffic. “Improved” does not necessarily mean formal construction. “Maintained” does not necessarily mean annual maintenance.

b. **“Mechanical means”** – Use of hand or power machinery or tools.

c. **“Relatively regular and continuous use”** – Vehicular use that has occurred and will continue to occur on a relatively regular basis. Examples are: access roads for equipment to maintain a stock water tank or other established water sources; access roads to maintained recreation sites or facilities; or access roads to mining claims.

A road that was established or has been maintained solely by the passage of vehicles would not be considered a road, even if it is used on a relatively regular and continuous basis. Vehicle roads constructed by mechanical means but that are no longer being maintained by mechanical methods are not roads. Sole use of hands and feet to move rocks or dirt without the use of tools or machinery does not meet the definition of “mechanical means.” Roads need not be “maintained” on a regular basis but rather “maintained” when road conditions warrant actions to keep it in a usable condition. A dead-end (cherry-stem) road can form the boundary of an inventory area and does not by itself disqualify an area from being considered “roadless”.

H-6300-1-WILDERNESS INVENTORY MAINTENANCE IN BLM OREGON/WASHINGTON

APPENDIX C – ROAD* ANALYSIS

(Factors to consider when determining whether a route is a road for wilderness inventory purposes.)

Wilderness Inventory Unit Name/Number: OR-034-030 – Sourdough Mountain

NOTE: This unit is affected by ONDA’s Freezeout Ridge proposed WSA.

Route Name and/or Identifier *(Include Transportation Plan Identifier, if known; include route number supplied by citizen information when available):*

BLM 7322-0-100

(This route is identified by ONDA as its “W13” route, for which ONDA provides no descriptive in its Road Log for its WSA proposal, and is depicted on its WSA map as “subunit boundary”.)

IX. LOCATION: Refer to attached map (is the Southwest corner boundary of this BLM inventory unit). **List photo point references (if applicable):** Refer to this BLM inventory unit’s associated hard copy of its BLM Photo Points map, and affiliated Photo Log and photos -- retained in this unit’s permanent hard copy file, and electronically retained under this unit’s subfolder Final Findings/GIS Products. Any applicable ONDA map, photos and affiliated Photo Log are electronically retained under Wilderness Characteristics/Citizen Proposals.

X. CURRENT PURPOSE OF ROUTE:

(Examples: Rangeland/Livestock Improvements (stock tank, developed spring, reservoir, fence, corral), Inholdings (ranch, farmhouse), Mine Site, Concentrated Use Site (camp site), Utilities (transmission line, telephone, pipeline), Administrative (project maintenance, communication site, vegetation treatment).)

Describe: This is a route extending south from BLM 7326-0-0A0 and some maps indicate it also as part of 7322-0-100, with both being the same physical route. In conjunction with 7326-0-0A0, this route is used for access to some of this unit’s rangeland/livestock improvements (earthen reservoirs) and for additional livestock developments associated with abutting BLM inventory units OR-034-026, and OR-034-027 and OR-034-028 for management of livestock, maintenance of the projects, and monitoring of associated activities. This route is access to a private parcel on its southern end and an associated 2007 issued pipeline ROW between the spring and a reservoir located on public land to the north. This route also provides important access to the existing PP & L 500 kV transmission line ROW.

XI. ROAD RIGHT-OF-WAY

Is a road right-of-way associated with this route?

Yes _____ No X Unknown _____

XII. CONSTRUCTION

Yes X No _____

Examples: Paved _____ Bladed X Graveled _____ Roadside
Berms X Cut/Fill X Other _____

Describe: Date of construction is unknown, although it occurred prior to BLM's late 1970's wilderness characteristics inventory. Present visual evidence of blading is more so from maintenance activities of this route since the route's construction. This route segment is occasionally bladed by BLM to provide for regular and continuous use.

XIII. IMPROVEMENTS

Yes _____ No X

By Hand Tools _____ By Machine _____

Examples: Culverts _____ Stream Crossings _____ Bridges _____
Drainage _____ Barriers _____ Other _____

Describe:

XIV. MAINTENANCE:

A. Is there Evidence or Documentation of Maintenance using hand tools or machinery? Yes X No _____

If yes: Hand Tools (Y/N) _____ Machine (Y/N) Y

Explain: This route receives mechanical maintenance as needed to provide for regular and continuous use during most of the calendar year; although, the frequency of such maintenance is less than that portion of this route that is associated with route segments leading North. Blading occurred in 2007 on this route in association with Freezeout Summit Reservoir and a proposed pipeline (currently temporarily on the surface).

B. If the route is in good condition, but there is no evidence of maintenance, would mechanical maintenance with hand tools or machines be approved by BLM in the event this route became impassable?

Yes X No

Comments: Mechanical maintenance would be approved as required to provide for seasonally regular and continuous use over time for those purposes described under “II”, above. Maintenance is also intended to permit access to the current temporary pipeline located on the southern-most segment of this route, once it is permanently installed.

XV. REGULAR AND CONTINUOUS USE:

Yes X No

Describe evidence (vehicle tracks observed) and other rationale for whether use has occurred and will continue to occur on a relatively regular basis:

BLM personnel and permittees use this route many times throughout the summer to maintain projects (developed springs and earthen reservoirs) on public and private lands), administer grazing, and to access other areas. This route is access to a private parcel and is associated with a 2007 issued pipeline ROW from a spring on the private to an earthen reservoir located north on public lands. This route provides important access from the north during much of the calendar year to the PP & L 500 kV transmission line ROW.

XVI. CONCLUSION:

To meet the definition of a road, items IV or V, and VI-A or B, and VII must be checked yes.

Road: Yes X No

Explanation: Meets criteria for road, as described and explained, above.

Evaluator(s): Shaney Rockefeller Date: 4/6/09
 Shaney Rockefeller, Soil Scientist

Steve Christensen Date: 4-6-2009
 Steve Christensen, Rangeland Management Specialist

* **road:** An access route which has been **improved and maintained** by **mechanical means** to insure **relatively regular and continuous use**. A way maintained solely by the passage of vehicles does not constitute a road.

a. **“Improved and maintained”** – Actions taken physically by people to keep the road open to vehicle traffic. “Improved” does not necessarily mean formal construction. “Maintained” does not necessarily mean annual maintenance.

b. **“Mechanical means”** – Use of hand or power machinery or tools.

c. **“Relatively regular and continuous use”** – Vehicular use that has occurred and will continue to occur on a relatively regular basis. Examples are: access roads for equipment to maintain a stock water tank or other established water sources; access roads to maintained recreation sites or facilities; or access roads to mining claims.

Following is the definition from Glossary of OSO 7-3-2007 Draft H-6300-1:

road: The BLM will continue to base the definition of what constitutes a “road” from the FLPMA’s legislative history. The language below is from the House of Representatives Committee Report 94-1163, page 17, dated May 15, 1976, on what became the FLPMA. It is the only statement regarding the definition of a road in the law or legislative history.

“The word ‘roadless’ refers to the absence of roads which have been improved and maintained by mechanical means to insure relatively regular and continuous use. A way maintained solely by the passage of vehicles does not constitute a road.”

The BLM previously adopted and will continue to use the following sub-definitions of certain words and phrases in the BLM road definition stated above:

a. **“Improved and maintained”** – Actions taken physically by people to keep the road open to vehicle traffic. “Improved” does not necessarily mean formal construction. “Maintained” does not necessarily mean annual maintenance.

b. **“Mechanical means”** – Use of hand or power machinery or tools.

c. **“Relatively regular and continuous use”** – Vehicular use that has occurred and will continue to occur on a relatively regular basis. Examples are: access roads for equipment to maintain a stock water tank or other established water sources; access roads to maintained recreation sites or facilities; or access roads to mining claims.

A road that was established or has been maintained solely by the passage of vehicles would not be considered a road, even if it is used on a relatively regular and continuous basis. Vehicle roads constructed by mechanical means but that are no longer being maintained by

mechanical methods are not roads. Sole use of hands and feet to move rocks or dirt without the use of tools or machinery does not meet the definition of “mechanical means.” Roads need not be “maintained” on a regular basis but rather “maintained” when road conditions warrant actions to keep it in a usable condition. A dead-end (cherry-stem) road can form the boundary of an inventory area and does not by itself disqualify an area from being considered “roadless”.

H-6300-1-WILDERNESS INVENTORY MAINTENANCE IN BLM OREGON/WASHINGTON

APPENDIX C – ROAD* ANALYSIS

(Factors to consider when determining whether a route is a road for wilderness inventory purposes.)

Wilderness Inventory Unit Name/Number: OR-034-030 – Sourdough Mountain

NOTE: This unit is affected by ONDA’s Freezeout Ridge proposed WSA.

Route Name and/or Identifier *(Include Transportation Plan Identifier, if known; include route number supplied by citizen information when available):*

BLM 7326-0-0A0

(This route is identified by ONDA as its “W14a way” (i.e., MPT) within its proposed “Freezeout Ridge proposed WSA.)

XVII. LOCATION: Refer to the attached map (is the route associated with the BLM inventory unit’s segment of the west boundary which abuts BLM’s unit OR-034-027 Broken Rim).

List photo point references (if applicable): Refer to this BLM inventory unit’s associated hard copy of its BLM Photo Points map, and affiliated Photo Log and photos - retained in this unit’s permanent hard copy file, and electronically retained under this unit’s subfolder Final Findings/GIS Products. Any applicable ONDA map, photos and affiliated Photo Log are electronically retained under Wilderness Characteristics/Citizen Proposals.

XVIII. CURRENT PURPOSE OF ROUTE:

(Examples: Rangeland/Livestock Improvements (stock tank, developed spring, reservoir, fence, corral), Inholdings (ranch, farmhouse), Mine Site, Concentrated Use Site (camp site), Utilities (transmission line, telephone, pipeline), Administrative (project maintenance, communication site, vegetation treatment).)

Describe: This route provides needed ongoing and regular access to rangeland/livestock improvements (fences and earthen reservoir developments) by allotment permittees and the BLM for management of livestock, maintenance of the projects, and BLM monitoring of associated activities. Also, this route provides for regular and continuous use for concentrated recreational camping activities associated with the Sourdough area.

XIX. ROAD RIGHT-OF-WAY:

Is a road right-of-way associated with this route?

Yes _____ No X Unknown _____

XX. CONSTRUCTION

Yes X No _____

Examples: Paved _____ Bladed X Graveled _____ Roadside
Berms X Cut/Fill X Other _____

Describe: Date of construction is unknown, but occurred prior to the BLM's late 1970's wilderness characteristics inventory. Evidence of the above actions are visually apparent, although blading and of berms of pushed rock may more so be associated with maintenance activities since its construction.

XXI. IMPROVEMENTS

Yes _____ No X

By Hand Tools _____ By Machine _____

Examples: Culverts _____ Stream Crossings _____ Bridges _____
Drainage _____ Barriers _____ Other _____

Describe:

XXII. MAINTENANCE:

A. Is there Evidence or Documentation of Maintenance using hand tools or machinery? Yes X No _____

If yes: Hand Tools (Y/N) _____ Machine (Y/N) Y

Explain: Evidence of blading and berms are visually present. This route receives mechanical maintenance as needed to allow for regular and continuous use.

a. **“Improved and maintained”** – Actions taken physically by people to keep the road open to vehicle traffic. “Improved” does not necessarily mean formal construction. “Maintained” does not necessarily mean annual maintenance.

b. **“Mechanical means”** – Use of hand or power machinery or tools.

c. **“Relatively regular and continuous use”** – Vehicular use that has occurred and will continue to occur on a relatively regular basis. Examples are: access roads for equipment to maintain a stock water tank or other established water sources; access roads to maintained recreation sites or facilities; or access roads to mining claims.

Following is the definition from Glossary of OSO 7-3-2007 Draft H-6300-1:

road: The BLM will continue to base the definition of what constitutes a “road” from the FLPMA’s legislative history. The language below is from the House of Representatives Committee Report 94-1163, page 17, dated May 15, 1976, on what became the FLPMA. It is the only statement regarding the definition of a road in the law or legislative history.

“The word ‘roadless’ refers to the absence of roads which have been improved and maintained by mechanical means to insure relatively regular and continuous use. A way maintained solely by the passage of vehicles does not constitute a road.”

The BLM previously adopted and will continue to use the following sub-definitions of certain words and phrases in the BLM road definition stated above:

a. **“Improved and maintained”** – Actions taken physically by people to keep the road open to vehicle traffic. “Improved” does not necessarily mean formal construction. “Maintained” does not necessarily mean annual maintenance.

b. **“Mechanical means”** – Use of hand or power machinery or tools.

c. **“Relatively regular and continuous use”** – Vehicular use that has occurred and will continue to occur on a relatively regular basis. Examples are: access roads for equipment to maintain a stock water tank or other established water sources; access roads to maintained recreation sites or facilities; or access roads to mining claims.

A road that was established or has been maintained solely by the passage of vehicles would not be considered a road, even if it is used on a relatively regular and continuous basis. Vehicle roads constructed by mechanical means but that are no longer being maintained by mechanical methods are not roads. Sole use of hands and feet to move rocks or dirt without the use of tools or machinery does not meet the definition of “mechanical means.” Roads need not be “maintained” on a regular basis but rather “maintained” when road conditions warrant actions to keep it in a usable condition. A dead-end (cherry-stem) road can form the boundary of an inventory area and does not by itself disqualify an area from being considered “roadless”.