

Wilderness Inventory Unit Index of Documents
Round Mountain OR-036-065, 11 total pages

Page 1: Index Cover Sheet

[Page 2: Form 1 – Documentation of BLM Wilderness Inventory: Findings on Record](#)

[Page 5: Form 2 – Documentation of Current Wilderness Inventory Conditions](#)

[Page 9: Form 2 – Summary of Findings and Conclusion](#)

[Page 10: Wilderness Characteristics Overview–Round Mountain OR-036-065 Map 1 of 2](#)

[Page 11: Wilderness Characteristics-Land Treatments-Round Mountain OR-036-065 Map 2 of 2](#)

**Prepared by:
U.S. Department of the Interior
Bureau of Land Management
Vale District Office
100 Oregon Street
Vale, Oregon 97918**



H-6300-1-WILDERNESS INVENTORY MAINTENANCE IN BLM OREGON/WASHINGTON

APPENDIX B – INVENTORY AREA EVALUATION

Evaluation of Current Conditions:

- 1) Document and review the existing BLM wilderness inventory findings on file, if available, regarding the presence or absence of individual wilderness characteristics, using Form 1, below.
- 2) Consider relevant information regarding current conditions available in the office to identify and describe any changes to the existing information (use interdisciplinary (ID) team knowledge, aerial photographs, field observations, maps, etc.), and document your findings on Form 2, below.

When Citizen Information has been submitted regarding wilderness characteristics, document the submitted materials including: date of Submission; Name of District(s) and Field Office(s) Affected; Type of material Submitted (e.g. narrative, map, photos). Evaluate any submitted citizen information regarding the validity of proposed boundaries of the unit(s), the existence of roads and other boundary features, the size of the unit(s), and the presence or absence of wilderness characteristics based on relevant information available in the office (prior BLM inventories, ID team knowledge, aerial photographs, field observations, maps, etc.)

Conduct field reviews as necessary to verify information and to ascertain current conditions. Reach conclusions on current conditions including boundaries, size of areas and presence or absence of wilderness characteristics. Fully explain the basis for each conclusion on form 2, including any critical differences between BLM and citizen information.

Document your findings regarding current conditions for each inventoried area. Describe how the present conditions are similar to, or have changed from, the conditions documented in the original wilderness inventory. Document your findings on Form 2 for each inventory area. Cite to or attach data considered, including photographs, maps, GIS layers, field trip notes, project files, *etc.*

Year: 2011 **Unit Number/Name:** OR-036-065--Round Mountain

**FORM 1 -- DOCUMENTATION OF BLM WILDERNESS INVENTORY
FINDINGS ON RECORD**

1. Is there existing BLM wilderness inventory information on all or part of this area?

Yes No (If yes, and if more than one unit is within the area, list the names of those units.):

A.) Inventory Source(s) -- (X) Denotes all applicable BLM Inventory files, printed maps, or published BLM Decision documents with information pertaining to this unit.

Wilderness Inventories

- (X) 1978 – BLM Wilderness Inventory Units 3-142 of OR-03-10-34 Round Mountain (unpublished BLM documents stored in Vale District case files)
- (X) April 1979 – *Wilderness -- Proposed Initial Inventory – Roadless Areas and Islands Which Clearly Do Not have Wilderness Characteristics, Oregon and Washington*

Wilderness Decision Documents

- (X) August 1979 – *Wilderness Review – Initial Inventory, Final Decision on Public Lands Obviously Lacking Wilderness Characteristics and Announcement of Public Lands to be Intensively Inventoried for Wilderness Characteristics, Oregon and Washington* (green document)
- () October 1979 – *Wilderness Review – Intensive Inventory - Oregon, Proposed Decision on the Intensive Wilderness Inventory of Selected Areas* (grey document).
- () March 1980 – *Wilderness Review – Intensive Inventory; Final Decisions on 30 Selected Units in Southeast Oregon and Proposed Decisions on Other Intensively Inventoried Units in Oregon and Washington* (orange document)
- () November 1980 - *Wilderness Inventory – Oregon and Washington, Final Intensive Inventory Decisions* (brown document)
- () November 1981 *Stateline Intensive Wilderness Inventory Final Decision, Oregon, Idaho, Nevada, Utah* (tan document).

B.) Inventory Unit Name(s)/Number(s)

BLM 3-142 of OR-03-10-34 Round Mountain

C.) Map Name(s)/Number(s)

- Final Decision – Initial Wilderness Inventory Map, August 1979, Oregon
- Proposed Decision -- Intensive Wilderness Inventory of Selected Areas Map, October 1979, Oregon
- Intensive Wilderness Inventory Map, March 1980, Oregon
- Intensive Wilderness Inventory --Final Decisions Map, November 1980, Oregon.
- November, 1981 *Stateline Intensive Wilderness Inventory Final Decision, Oregon, Idaho, Nevada, Utah* (tan document).

D.) BLM District(s)/Field Office(s)

Vale District Office

Jordan Field Office

2. BLM Inventory Findings on Record

(Existing inventory information regarding wilderness characteristics (if more than one BLM inventory unit is associated with the area, list each unit and answer each question individually for each inventory unit):

Inventory Source: See above.

Unit#/Name	Size (historic acres)	Natural Condition? Y/N	Outstanding Solitude? Y/N	Outstanding Primitive & Unconfined Recreation? Y/N	Supplemental Values? Y/N
3-142 Round Mountain OR-03-10-34	12,160	N	*	*	*
TOTAL	12,160				

*--These criteria were not specifically addressed in the inventory of this unit.

H-6300-1-WILDERNESS INVENTORY MAINTENANCE IN BLM OREGON/WASHINGTON

APPENDIX B – INVENTORY AREA EVALUATION

Evaluation of Current Conditions:

- 1) Document and review the existing BLM wilderness inventory findings on file, if available, regarding the presence or absence of individual wilderness characteristics, using Form 1, below.
- 2) Consider relevant information regarding current conditions available in the office to identify and describe any changes to the existing information (use interdisciplinary (ID) team knowledge, aerial photographs, field observations, maps, etc.), and document your findings on Form 2, below.

When Citizen Information has been submitted regarding wilderness characteristics, document the submitted materials including: date of Submission; Name of District(s) and Field Office(s) Affected; Type of material Submitted (e.g. narrative, map, and photos). Evaluate any submitted citizen information regarding the validity of proposed boundaries of the unit(s), the existence of roads and other boundary features, the size of the unit(s), and the presence or absence of wilderness characteristics based on relevant information available in the office (prior BLM inventories, ID team knowledge, aerial photographs, field observations, maps, etc.)

Conduct field reviews as necessary to verify information and to ascertain current conditions. Reach conclusions on current conditions including boundaries, size of areas and presence or absence of wilderness characteristics. Fully explain the basis for each conclusion on form 2, including any critical differences between BLM and citizen information.

Document your findings regarding current conditions for each inventoried area. Describe how the present conditions are similar to, or have changed from, the conditions documented in the original wilderness inventory. Document your findings on Form 2 for each inventory area. Cite to or attach data considered, including photographs, maps, GIS layers, field trip notes, project files, *etc.*

FORM 2 -- DOCUMENTATION OF CURRENT WILDERNESS INVENTORY CONDITIONS

Unit Number/Name: OR-036-065—Round Mountain

Description of Current Conditions: [Include land ownership, location, topography, vegetation features and summary of major human uses/activities.]

1. Is the unit of sufficient size?

Yes X No

Description: Refer to this inventory unit's associated Map 1 for BLM's Unit OR-036-065 location. The boundary of the 11,780 acre unit includes original 1970's inventory Unit 3-142 and small areas of the surrounding original inventory units that were excluded from further intensive inventory because of them not meeting the size criteria. Acreage for Unit OR-036-065 in Form 2 is calculated from BLM GIS information. BLM Unit OR-036-065 is bounded on its north side by a utility corridor right-of-way for U.S. Highway 95, on its northeast and east side by private property parcels and un-numbered BLM Road, and on its south and west sides by BLM Road 6367-0-00. The natural-surfaced boundary roads receive mechanical maintenance as needed to keep them passable on a regular and continuous (seasonal) basis.

2. Is the unit in a natural condition?

Yes No X N/A

Description: Given its size relative to the evidence of man-made developments, BLM Unit OR-036-065 appears to be affected not primarily by the forces of nature but with the imprint of humans that is substantially noticeable to the average visitor. The majority of the unit consists of relatively flat terrain with only a few elevated areas located mostly in south central and southeast portion of the unit. Elevation within the unit ranges from 3,870 feet at the extreme northeast corner to 4,265 feet at the top of Round Mountain located near the unit's center. Round Mountain rises approximately 200 feet above the remaining majority of the unit and is the only dominate feature that exists within the boundaries. The unit is dissected by numerous small ephemeral drainages. Stream channels located along the west and south portions of the unit drain into the Owyhee River while the remaining channels drain to the north and northeast into Dry Creek that flows parallel to the unit's northeastern boundary. Sparsely populated vegetation throughout the unit consists predominately of big and low sagebrush with both native and non-native grass species.

Refer to this inventory unit's associated Map 1 and Map 2 for its human developments in BLM's Unit OR-036-065. Developments within the unit include 12.9 miles of 12 MPTs,

one pipeline system with 15.1 miles of pipelines, 15 troughs and 2 storage tanks, 2 earthen reservoirs of which one is a private irrigation reservoir for private land, one private permitted enclosure for storing hay, 15.2 miles of fence line, and 14 vegetation manipulation treatments conducted from 1957 through 2003. The vegetation treatments were conducted on approximately eighty percent of the unit over a fifty-six year period. A large portion of the sagebrush component throughout the unit has been reduced by the various vegetation treatments conducted during this period. Linear contrast of vegetation types is prevalent throughout most of the treatment areas even although it has been over two or more decades since the last treatment was conducted. To the average visitor, the vegetation treatments conducted in the unit presently appear as a whole, individually and collectively, mostly distinguishable across the landscape. Because of the numerous man-made-developments scattered throughout the unit and the location of MPTs that dissect the landscape the unit does not appear affected primarily by the forces of nature.

3. Does the unit have outstanding opportunities for solitude?

Yes _____ No N/A _____

Description: BLM concludes that BLM Unit OR-036-065 does not provide outstanding opportunities for solitude. Much of the character of the inventory unit has not changed since the 1970's. The unit is mostly irregular in shape, with a narrower width in the northern third of the unit and in the southern third the extreme southeastern corner extends outwardly to the southeast as an elongated triangle. The width of the unit averages about five miles wide throughout the central portion extending to the south while the width along the unit's southern boundary is about seven miles. The length of the unit is about five miles in its central portion extending to the west and about two to three miles in length in the eastern third of the unit. Diversity in landscape relief throughout the unit is limited to mostly flat to gentle sloping terrain in the northern and western portions of the unit with the south and southeast areas contain a few rolling ridges and hill tops that are dissected by numerous small drainages of The Owyhee River and Dry Creek. Elevation rises in the unit by about 200 feet from the northeastern boundary to the high point of the unit, Round Mountain located in the central portion of the unit and provides the only diverse area that one might experience any opportunities of solitude. The unit's diversity in vegetation that is comprised of both low and big sage brush and both native and non-native grasses across the landscape does not provide any extensive vegetative screening opportunities for solitude or a sense of isolation in a large portion of the unit. The majority of the unit lacks a large portion of its sagebrush vegetation screening component when it was reduced by wildfire and vegetation treatments throughout the 1960s -1980s. The locations of MPTs that dissect the unit in relation to the unit's boundary roads limit the extent of available areas that one could experience opportunities for solitude.

As a result of the area's size relative to its shape, the absence of large diverse areas, the location of roads and MPTs, the absence of vegetative screening, and the lack of diversity in relief, there is no outstanding opportunities for solitude within the unit.

4. Does the unit have outstanding opportunities for primitive and unconfined recreation?Yes _____ No N/A _____

Description: BLM concludes that BLM Unit OR-036-065 does not provide outstanding opportunities for primitive and unconfined recreation. The most dominate dispersed recreation activities within the unit would be hiking throughout the south central and southeastern hills or hunting of game species (primarily deer, chukar and antelope). Other than nearly flat north, northeast and western terrain that exists over almost seventy percent of the unit there are no unique or special features associated with the unit that would attract a visitor who is seeking a primitive and unconfined recreational experience. Recreational pursuits within the area, individually or collectively, are not outstanding in character or nature for the unit.

California bighorn sheep habitat is identified in the river corridor, a species dependent upon wildlands habitat for survival. Although the opportunity to hunt Bighorn sheep within the unit may exist, BLM does not find it to be outstanding due to the limited terrain within the area that Bighorn sheep occupy and utilize on a regular basis (e.g., rugged, rocky, cliffy or steep-sloped terrain). Moreover, while this area is included within the identified potential habitat for Bighorn sheep, no local sheep herd is known to inhabit or move through the area within the parcel.

5. Does the unit have supplemental values?Yes _____ No N/A _____**Description:**

Summary of Findings and Conclusion

Unit Name and Number: OR-036-065—Round Mountain

Summary Results of Analysis:

- 1. Does the area meet any of the size requirements? Yes No
- 2. Does the area appear to be natural? Yes No
- 3. Does the area offer outstanding opportunities for solitude or a primitive and unconfined type of recreation? Yes No NA
- 4. Does the area have supplemental values? Yes No NA

Conclusion -- check one:

- The area, or a portion of the area, has wilderness character.
- The area does not have wilderness character.

Prepared by: Jack Wenderoth 11-16-11
 Jack Wenderoth, Planning Contractor

Team Members:

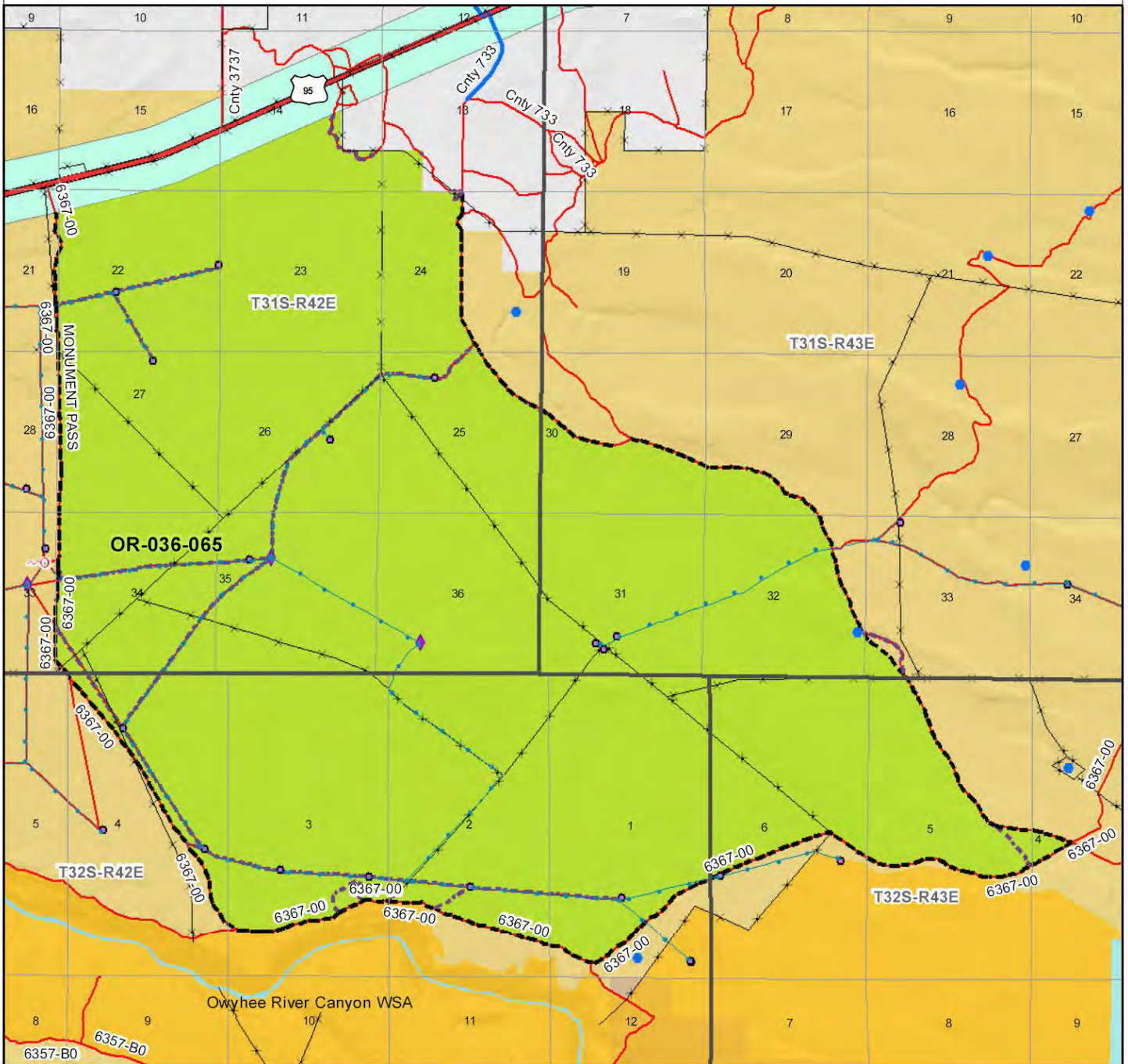
<u>Keri Fredrick</u>	<u>11-16-11</u>
Keri Fredrick, Outdoor Recreation Planner	Date
<u>Amee Huff</u>	<u>11/16/2011</u>
Amee Huff, Rangeland Management Specialist	Date
<u>Eian Ray</u>	<u>11-16-11</u>
Eian Ray, GIS Specialist, Contractor	Date
<u>Garth Ross</u>	<u>11/16/2011</u>
Garth Ross, Wildlife Biologist	Date
<u>Brent Grasty</u>	<u>11/16/11</u>
Brent Grasty, GIS Coordinator	Date

Approved by:

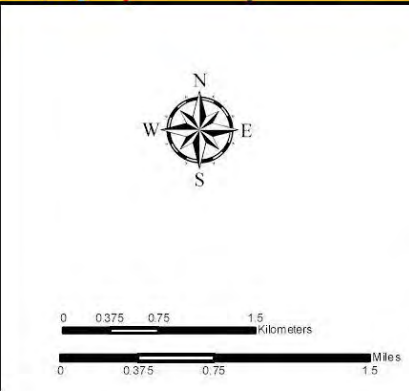
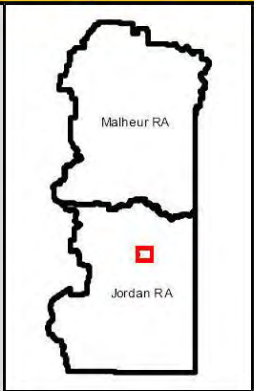
Carolyn R. Christ 11/28/2011
 Carolyn Freyborn, Jordan Resource Area Field Manager Date

This form documents information that constitutes an inventory finding on wilderness characteristics. It does not represent a formal land use allocation or a final agency decision subject to administrative remedies under either 43 CFR parts 4 or 1610.5-2.

Wilderness Characteristics - Overview Round Mountain - OR-036-065 - Map 1 of 2



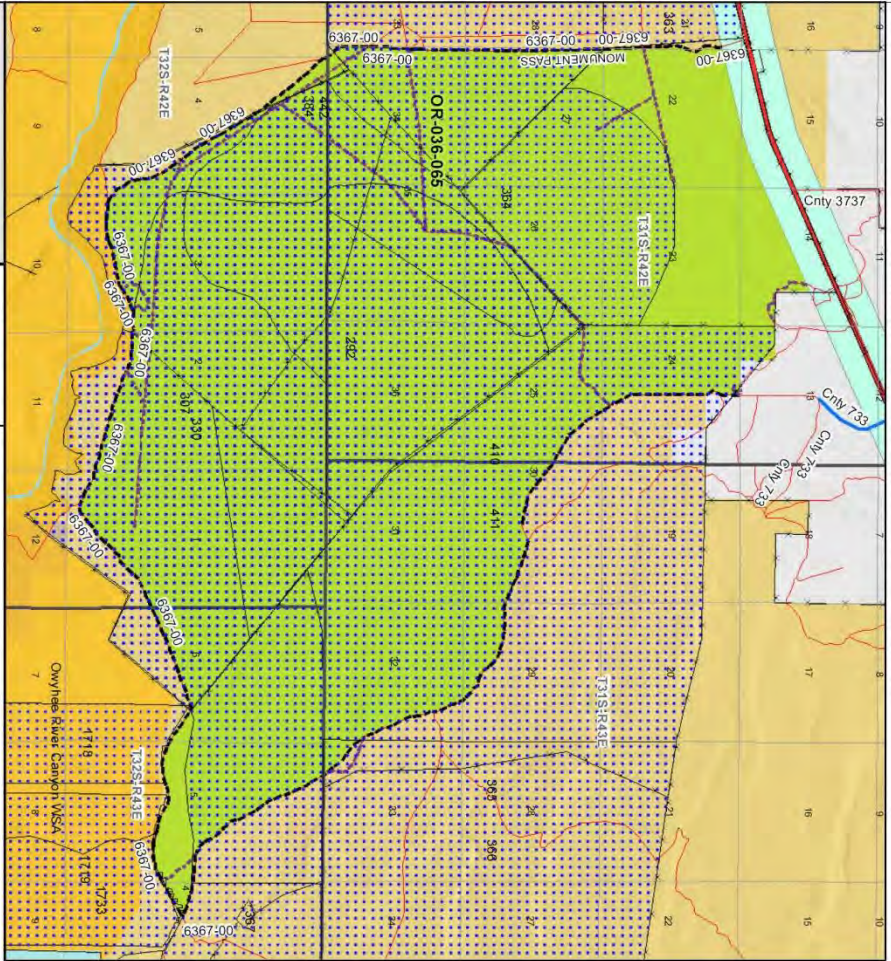
Legend	
	Developed Spring
	Wildlife Guzzler
	Earthen Reservoir
	Pipeline
	Trough
	Fence
	Storage Tank
	Surface Mining Disturbance
	Sage Grouse Lek
	Special Status Plant
	BLM Wild Char Inventory Unit
	Wilderness Study Area
	Mineral Material Site
	Road/Utility Right-of-Way
	Major Water Body
	Route Types - BLM Determination Boundary Road
	Motorized Primitive Trail (MPT)
	Discontinued Use
	Routes - Outside Wild Char Unit BLM Numbered & Other Routes
	County
	Major Highway
	BLM Numbered & Other Routes
	Land Ownership Bureau of Land Management
	State
	Private
	Other Federal Land



U.S. DEPARTMENT OF THE INTERIOR
 BUREAU OF LAND MANAGEMENT

VALE DISTRICT
 October 21, 2011
No warranty is made by the Bureau of Land Management as to the accuracy, reliability, or completeness of these data for individual or aggregate use with other data. Original data were compiled from various sources. This information may not meet National Map Accuracy Standards. This product was developed through digital means and may be updated without notification.
--FINAL--

Wilderness Characteristics - Land Treatments
Round Mountain - OR-036-065 - Map 2 of 2



Legend

- Land Treatment:
 - 384 Field Five B.C. & SDG
 - 411 Rome Seeding
 - 442 Field Five B.C. & SDG
 - 1718 Pinto Horse ESR
 - 1719 Pinto Horse ESR
- Ownership:
 - Private
 - State
 - Federal
 - Other
- Other:
 - County
 - City
 - Other

Scale: 0, 0.375, 0.75, 1.5, 3.0 Miles

U.S. DEPARTMENT OF THE INTERIOR
 BUREAU OF LAND MANAGEMENT

VALE DISTRICT
 October 21, 2011

-FINAL--

Wilderness Characteristics - Land Treatments
Round Mountain - OR-036-065 - Map 2 of 2

OBJECTID*	NAME	TREATMENT TYPE	SEED GROUP	DATE
292	ROUND MOUNTAIN ESR	Drill Seeding	Non-native Grasses	1974
307	OWYHEE RESDG	Drill Seeding	Non-native Grasses	1960
330	OWYHEE B.C.	Chemical Treatment	Not Applicable	1960
363	ROUND MOUNTAIN RESDG	Drill Seeding	Non-native Grasses	1957
364	ROUND MOUNTAIN COMPLEX ESR	Drill Seeding	Combination	1986
365	DRY CR PASTURE SDG	Drill Seeding	Non-native Grasses	1975
366	DRY CR RESDG	Drill Seeding	Non-native Grasses	1959
367	MONUMENT B.C.	Chemical Treatment	Not Applicable	1962
384	FIELD FIVE B.C. & SDG	Chemical Treatment	Not Applicable	1963
410	ROME SEEDING	Plow/Disc	Not Applicable	1963
411	ROME SEEDING	Drill Seeding	A mix of non-native gr	1963
442	FIELD FIVE B.C. & SDG	Drill Seeding	Non-native Grasses	1968
1718	PINTO HORSE ESR	Aerial Seeding	Shrubs	20030101
1719	PINTO HORSE ESR	Aerial Seeding	Shrubs	20030101
1733	PINTO HORSE ESR	Drill Seeding	Native Grasses	20020906

Note: The Land Treatments represented by navy blue dots on the map to the left are labeled with the treatments. ObjectIDs listed in the first field of the Land Treatments table shown above. Multiple types of treatments may have been applied to the same area. For example, one treatment area may have been plowed and drill seeded - a record is shown in the table for each type of treatment.