

Wilderness Inventory Unit Index of Documents
Parsnip OR-036-064, 12 total pages

Page 1: Index Cover Sheet

[Page 2: Form 1 – Documentation of BLM Wilderness Inventory: Findings on Record](#)

[Page 5: Form 2 – Documentation of Current Wilderness Inventory Conditions](#)

[Page 10: Form 2 – Summary of Findings and Conclusion](#)

[Page 11: Wilderness Characteristics Overview–Parsnip OR-036-064 Map 1 of 2](#)

[Page 12: Wilderness Characteristics-Land Treatments-Parsnip OR-036-064 Map 2 of 2](#)

Prepared by:
U.S. Department of the Interior
Bureau of Land Management
Vale District Office
100 Oregon Street
Vale, Oregon 97918



H-6300-1-WILDERNESS INVENTORY MAINTENANCE IN BLM OREGON/WASHINGTON

APPENDIX B – INVENTORY AREA EVALUATION

Evaluation of Current Conditions:

- 1) Document and review the existing BLM wilderness inventory findings on file, if available, regarding the presence or absence of individual wilderness characteristics, using Form 1, below.
- 2) Consider relevant information regarding current conditions available in the office to identify and describe any changes to the existing information (use interdisciplinary (ID) team knowledge, aerial photographs, field observations, maps, etc.), and document your findings on Form 2, below.

When Citizen Information has been submitted regarding wilderness characteristics, document the submitted materials including: date of Submission; Name of District(s) and Field Office(s) Affected; Type of material Submitted (e.g. narrative, map, photos). Evaluate any submitted citizen information regarding the validity of proposed boundaries of the unit(s), the existence of roads and other boundary features, the size of the unit(s), and the presence or absence of wilderness characteristics based on relevant information available in the office (prior BLM inventories, ID team knowledge, aerial photographs, field observations, maps, etc.)

Conduct field reviews as necessary to verify information and to ascertain current conditions. Reach conclusions on current conditions including boundaries, size of areas and presence or absence of wilderness characteristics. Fully explain the basis for each conclusion on form 2, including any critical differences between BLM and citizen information.

Document your findings regarding current conditions for each inventoried area. Describe how the present conditions are similar to, or have changed from, the conditions documented in the original wilderness inventory. Document your findings on Form 2 for each inventory area. Cite to or attach data considered, including photographs, maps, GIS layers, field trip notes, project files, *etc.*

Year: 2011 **Unit Number/Name:** OR-036-064—Parsnip

**FORM 1 -- DOCUMENTATION OF BLM WILDERNESS INVENTORY
FINDINGS ON RECORD**

1. Is there existing BLM wilderness inventory information on all or part of this area?

Yes No (If yes, and if more than one unit is within the area, list the names of those units.):

A.) Inventory Source(s) -- (X) Denotes all applicable BLM Inventory files, printed maps, or published BLM Decision documents with information pertaining to this unit.

Wilderness Inventories

- 1978 – BLM Wilderness Inventory Units 3-132 of OR-03-10-14 Parsnip, OR-03-10-12 Coffee and Partial of OR-03-10-11 Red Hill; OR-03-10-19 Place. (unpublished BLM documents stored in Vale District case files)
- April 1979 – *Wilderness -- Proposed Initial Inventory – Roadless Areas and Islands Which Clearly Do Not have Wilderness Characteristics, Oregon and Washington*

Wilderness Decision Documents

- August 1979 – *Wilderness Review – Initial Inventory, Final Decision on Public Lands Obviously Lacking Wilderness Characteristics and Announcement of Public Lands to be Intensively Inventoried for Wilderness Characteristics, Oregon and Washington* (green document)
- October 1979 – *Wilderness Review – Intensive Inventory - Oregon, Proposed Decision on the Intensive Wilderness Inventory of Selected Areas* (grey document).
- March 1980 – *Wilderness Review – Intensive Inventory; Final Decisions on 30 Selected Units in Southeast Oregon and Proposed Decisions on Other Intensively Inventoried Units in Oregon and Washington* (orange document)
- November 1980 - *Wilderness Inventory – Oregon and Washington, Final Intensive Inventory Decisions* (brown document)
- November 1981 *Stateline Intensive Wilderness Inventory Final Decision, Oregon, Idaho, Nevada, Utah* (tan document).

B.) Inventory Unit Name(s)/Number(s)

BLM 3-132 of OR-03-10-14 Parsnip, OR-03-10-12 Coffee and Partial of OR-03-10-11 Red Hill; OR-03-10-19 Place

C.) Map Name(s)/Number(s)

- Final Decision – Initial Wilderness Inventory Map, August 1979, Oregon
- Proposed Decision -- Intensive Wilderness Inventory of Selected Areas Map, October 1979, Oregon
- Intensive Wilderness Inventory Map, March 1980, Oregon
- Intensive Wilderness Inventory --Final Decisions Map, November 1980, Oregon.
- November, 1981 *Stateline Intensive Wilderness Inventory Final Decision, Oregon, Idaho, Nevada, Utah* (tan document).

D.) BLM District(s)/Field Office(s)

Vale District Office

Jordan Field Office

2. BLM Inventory Findings on Record

(Existing inventory information regarding wilderness characteristics (if more than one BLM inventory unit is associated with the area, list each unit and answer each question individually for each inventory unit):

Inventory Source: See above.

Unit# / Name	Size (historic acres)	Natural Condition? Y/N	Outstanding Solitude? Y/N	Outstanding Primitive & Unconfined Recreation? Y/N	Supplemental Values? Y/N
3-132 OR-03-10-14 Parsnip OR-03-10-12 Coffee	21,600 (19,780) (2,300)	N	Y	N	Y
3-132 Partial of OR-03-10-11 Red Hill	100 (2,080)	*	*	*	*
OR-03-10-19 Place	3,020	*	*	*	*
TOTAL	29,000				

*-- These criteria were not specifically addressed during the inventory of this unit.

H-6300-1-WILDERNESS INVENTORY MAINTENANCE IN BLM OREGON/WASHINGTON

APPENDIX B – INVENTORY AREA EVALUATION

Evaluation of Current Conditions:

- 1) Document and review the existing BLM wilderness inventory findings on file, if available, regarding the presence or absence of individual wilderness characteristics, using Form 1, below.
- 2) Consider relevant information regarding current conditions available in the office to identify and describe any changes to the existing information (use interdisciplinary (ID) team knowledge, aerial photographs, field observations, maps, etc.), and document your findings on Form 2, below.

When Citizen Information has been submitted regarding wilderness characteristics, document the submitted materials including: date of Submission; Name of District(s) and Field Office(s) Affected; Type of material Submitted (e.g. narrative, map, and photos). Evaluate any submitted citizen information regarding the validity of proposed boundaries of the unit(s), the existence of roads and other boundary features, the size of the unit(s), and the presence or absence of wilderness characteristics based on relevant information available in the office (prior BLM inventories, ID team knowledge, aerial photographs, field observations, maps, etc.)

Conduct field reviews as necessary to verify information and to ascertain current conditions. Reach conclusions on current conditions including boundaries, size of areas and presence or absence of wilderness characteristics. Fully explain the basis for each conclusion on form 2, including any critical differences between BLM and citizen information.

Document your findings regarding current conditions for each inventoried area. Describe how the present conditions are similar to, or have changed from, the conditions documented in the original wilderness inventory. Document your findings on Form 2 for each inventory area. Cite to or attach data considered, including photographs, maps, GIS layers, field trip notes, project files, *etc.*

FORM 2 -- DOCUMENTATION OF CURRENT WILDERNESS INVENTORY CONDITIONS

Unit Name/Number: OR-036-064—Parsnip

Description of Current Conditions: [Include land ownership, location, topography, vegetation features and summary of major human uses/activities.]

1. Is the unit of sufficient size?

Yes X No

Description: Refer to this inventory unit's associated Map 1 for BLM's Unit OR-036-064 location. The boundary of the 27,302 acre unit includes original 1970's inventory Unit 3-132 and two of the surrounding area original inventory units that were excluded from further intensive inventory because of them not meeting the size criteria. Since the date of the original inventory route usage throughout BLM Unit OR-036-064 has changed. BLM has determined that many of the boundary roads around the various units identified in the 1970's inventory are now reclassified as motorized primitive trails (MPTs) because the routes no longer met the definition of a road for inventory purposes. Reasons why these original boundary roads have become MPTs range from minimal or no maintenance conducted on them over the years, or a change of travel on user preferred routes by ranchers, hunters, and recreationist, or increased travel to new livestock water projects such as reservoirs and pipelines, to pasture fence reconfiguration and/or a change in livestock grazing season-of-use that alter how routes were used previously by ranchers and BLM staff for livestock administration. Acreage for Unit OR-036-064 in Form 2 is calculated from BLM GIS information. BLM Unit OR-036-064 is bounded on its northeast side by Malheur County Road 808, on its east side by state private land parcels, the utility right-of-way corridor for Malheur County Road 785, a private land parcel, and Malheur County Road 3942, on its south side by an unnumbered BLM Road, a private land parcel, an unnamed private earthen reservoir and associated right-of-way, and BLM Road 6370-00, and on its west and northwest side by alternating sections of Malheur County Road 806 with two private land parcels and a 5 acre area surrounded on three sides by irrigation canals with rights-of-ways. Totally within and surrounded by BLM Unit OR-036-064 are seven private land parcels totaling approximately 1920 acres and two unnamed private earthen reservoirs located on public land in the Willow Creek drainage totaling about 42 acres. The natural-surfaced boundary roads receive mechanical maintenance as needed to keep them passable on a regular and continuous (seasonal) basis.

2. Is the unit in a natural condition?Yes _____ No X N/A _____

Description: Given BLM Unit OR-036-064 size relative to the evidence of man-made developments the unit appears to be affected primarily by the forces of man and not of nature. The northern portion of the unit is dominated by a series of northward trending low parallel ridgelines that traverse the eastern boundary to the Sheep Spring Creek drainage. While the remaining area of this northern portion of the unit is dominated by a group of moderately sized hills that are highly dissected by small drainages from Parsnip and Round Peaks that form the eastern most portion of westward trending Juniper Ridge. These small drainages flow to the northwest and west into Antelope, Cantor, and Jack Creeks. The southern portion of the unit consists of dissected low hills and ridges that slope to the south and west and drain into the tributaries of the upper Soldier Creek area. Elevation within the unit ranges from 4,460 feet to 6,121 feet, with the upper elevations around Round and Parsnip Peaks in the unit's north central area while the unit's lower elevations are located along the unit's extreme northeast boundary. Sparsely populated vegetation throughout the unit consists predominately of big and low sagebrush with both native and non-native grass species and an occasional isolated juniper tree.

Refer to this inventory unit's associated Map 1 and Map 2 for its human developments in BLM's Unit OR-036-064. Developments within the unit include 55.2 miles of 58 MPTs, four pipeline systems with 5.70 miles of pipelines and 5 troughs, one wildlife guzzler, 6 earthen reservoirs, 3 privately owned large earthen reservoirs on public land with associated rights-of-ways, 2 corrals, one vegetation exclosure, 4 reservoir exclosures, 41.3 miles of fence line, 7 developed springs, and 7 vegetation manipulation treatments conducted from 1955 through 1984. The vegetation treatments were conducted on approximately fifteen percent of the unit over a thirty-one year period. Almost 4,100 acres of the sagebrush component in the unit has been reduced by non-native seedings, chemical vegetation treatments, and by prescribe fire. To the average visitor, the vegetation treatments conducted in the unit presently appear as a whole, individually and collectively, mostly indistinguishable across the landscape. The unit appears affected primarily by human influences and not by the forces of nature because the numerous man-made-developments and MPTs densely populate the unit allowing these developments to be substantially noticeable.

3. Does the unit have outstanding opportunities for solitude?Yes _____ No N/A _____

Description: BLM concludes that BLM Unit OR-036-064 does not provide outstanding opportunities for solitude. Unit OR-036-064 possesses an irregular and a contorted triangular shape narrowest at its northern point and expands in width southward until the central portion of the unit. The central area contains numerous large islands of private land parcels that perforate the unit from the western boundary to the eastern boundary. South of the central area the unit expands in width southward to the southern boundary. Most of the unit's northern and central area is approximately 2.5 to 4.0 miles in width, with the south central and southern area expanding from 4.5 to 7.0 miles in width in the southern direction. The unit has a length of about 7.0 to 11.0 miles going from west to east. Although the unit is quite large in both width and length it is dissected throughout by the numerous islands of private land parcels and project development connecting motorized primitive trails (MPTs) making seclusion from other humans in most of the unit nearly impossible. The northern half of the unit provides some seclusion in and around Round and Parsnip Peaks that connect with Juniper Ridge to the west. The majority of open slopes on these peaks and on other rolling hills in the area can be seen from the boundary road located along the west side of the unit and from the numerous MPTs that dissect all portions of the unit leaving very few areas isolated from human view. Diverse relief throughout landforms and terrain within the southern half of the unit would provide quality seclusion from others if the area did not contain a very dense network of MPTs that allow most slopes and drainages in the area to be viewed from the routes. Vegetative height and density on hill slopes in both the northern and southern portions of the unit are relatively sparse and produce little continuous or substantial screening for seclusion and do not provide visitors a sense of solitude from others. As a result of the unit's size relative to its shape, the density of MPTs that cross the unit, the location of private land parcel islands throughout the unit, and the open view of the unit's terrain and most side slopes and drainages from existing boundary roads, in spite of the diversity of relief over the landscape, outstanding opportunities for solitude is not provided over wide and continuous areas within the unit.

4. Does the unit have outstanding opportunities for primitive and unconfined recreation?Yes _____ No N/A _____

Description: BLM concludes that BLM Unit OR-036-064 does not provide outstanding opportunities for primitive and unconfined recreation even though potential California Bighorn sheep habitat is present within the extreme southern portion of the unit. The most dominant dispersed recreation activities within the unit would be hiking around the hills of the north central portion of the unit around Parsnip and Round Peaks or hunting of game species (primarily deer, chukar, and antelope, and to a questionable extent California Bighorn sheep). Most recreational pursuits within the area, individually or collectively, are not outstanding in character or nature for the unit although California Bighorn sheep habitat is identified in the unit, a species dependent upon wildlands habitat for survival. Although the opportunity to hunt Bighorn sheep within the unit may exist, BLM does not find it to be outstanding due to the limited terrain within the area that Bighorn sheep would occupy and utilize on a regular basis (e.g., rugged, rocky, cliffy or steep-sloped terrain). Moreover, while this area is included within the identified potential habitat for Bighorn sheep, no local sheep herd is known to inhabit or move through the area within the parcel.

While opportunities within the unit exist for primitive and unconfined recreation, other than the hilly area in the north central portion there are no unique or special features associated with the unit that would attract a visitor who is seeking a primitive and unconfined recreational experience. Recreational pursuits within the area, individually or collectively, are not outstanding in character or nature.

5. Does the unit have supplemental values?Yes No _____ N/A _____

Description: BLM has documented six sage grouse leks and one Columbia Spotted Frog (*Rana luteiventris*) site within the unit. The grouse and frog are BLM special status animal species.

Summary of Findings and Conclusion

Unit Name and Number: OR-036-064--Parsnip

Summary Results of Analysis:

- 1. Does the area meet any of the size requirements? Yes No
- 2. Does the area appear to be natural? Yes No
- 3. Does the area offer outstanding opportunities for solitude or a primitive and unconfined type of recreation? Yes No NA
- 4. Does the area have supplemental values? Yes No NA

Conclusion -- check one:

The area, or a portion of the area, has wilderness character.

The area does not have wilderness character.

Prepared by: Jade R Wenderoth 11-16-11
Jack Wenderoth, Planning Contractor

Team Members:

<u>Keri Fredrick</u>	<u>11-16-11</u>
Keri Fredrick, Outdoor Recreation Planner	Date
<u>Aimee Huff</u>	<u>11/16/2011</u>
Aimee Huff, Rangeland Management Specialist	Date
<u>Eian Ray</u>	<u>11-16-11</u>
Eian Ray, GIS Specialist, Contractor	Date
<u>Garth Ross</u>	<u>11/16/2011</u>
Garth Ross, Wildlife Biologist	Date
<u>Brent Grasty</u>	<u>11/16/11</u>
Brent Grasty, GIS Coordinator	Date

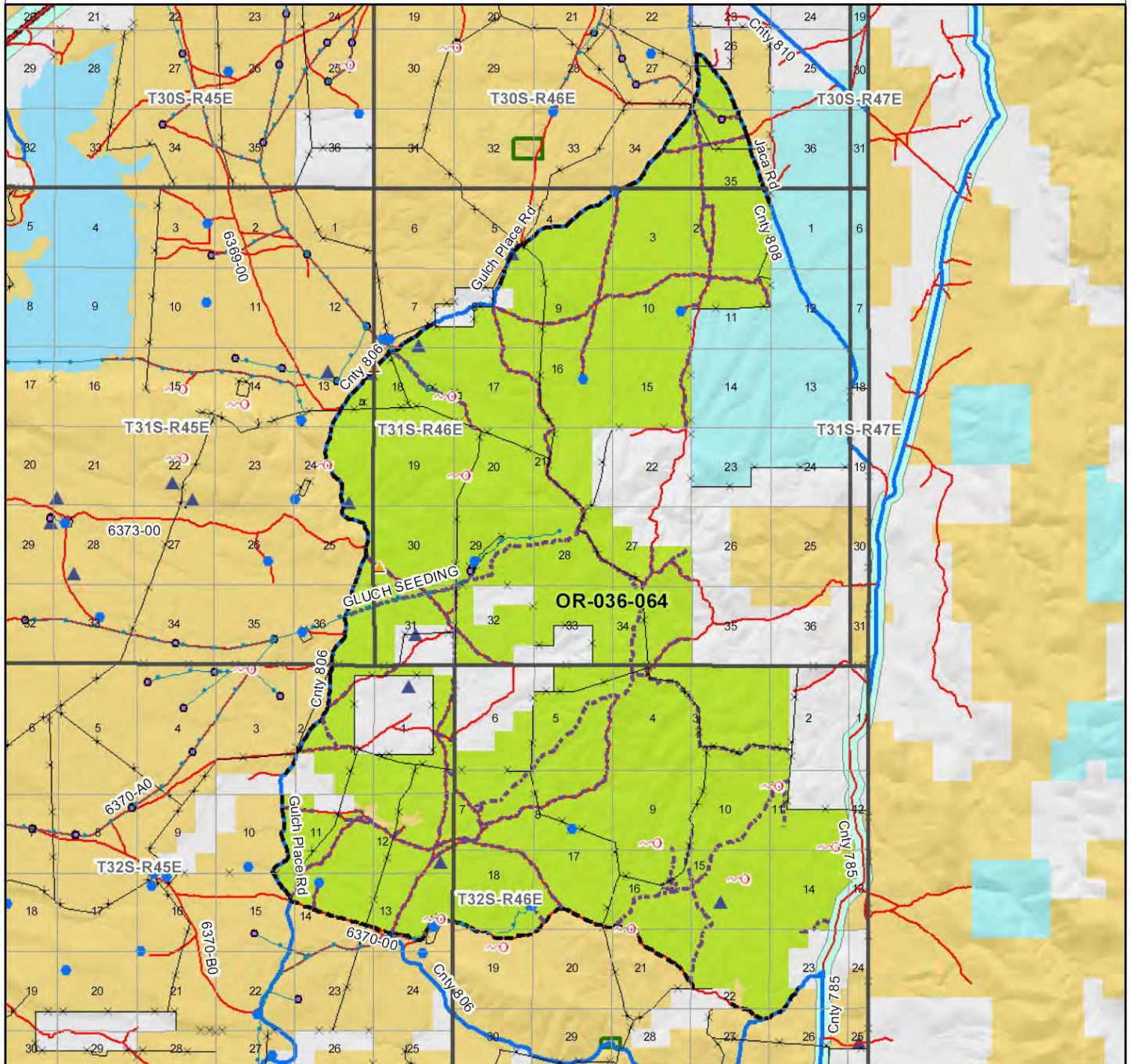
Approved by:

Carolyn R. Chad 11/28/2011
Carolyn Freeborn, Jordan Resource Area Field Manager Date

This form documents information that constitutes an inventory finding on wilderness characteristics. It does not represent a formal land use allocation or a final agency decision subject to administrative remedies under either 43 CFR parts 4 or 1610.5-2.

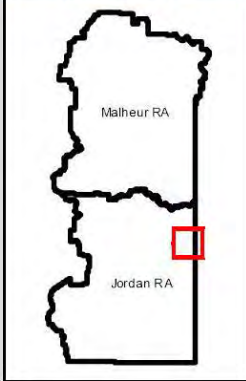
Wilderness Characteristics - Overview

Parsnip - OR-036-064 - Map 1 of 2



Legend

Developed Spring	Boundary Road
Wildlife Guzzler	Motorized Primitive Trail (MPT)
Earthen Reservoir	Discontinued Use
Pipeline	Routes - Outside Wild Char Unit
Trough	County
Fence	Major Highway
Storage Tank	BLM Numbered & Other Routes
Surface Mining Disturbance	Bureau of Land Management
Sage Grouse Lek	State
Special Status Plant	Private
BLM Wild Char Inventory Unit	Other Federal Land
Wilderness Study Area	
Mineral Material Site	
Road/Utility Right-of-Way	
Major Water Body	



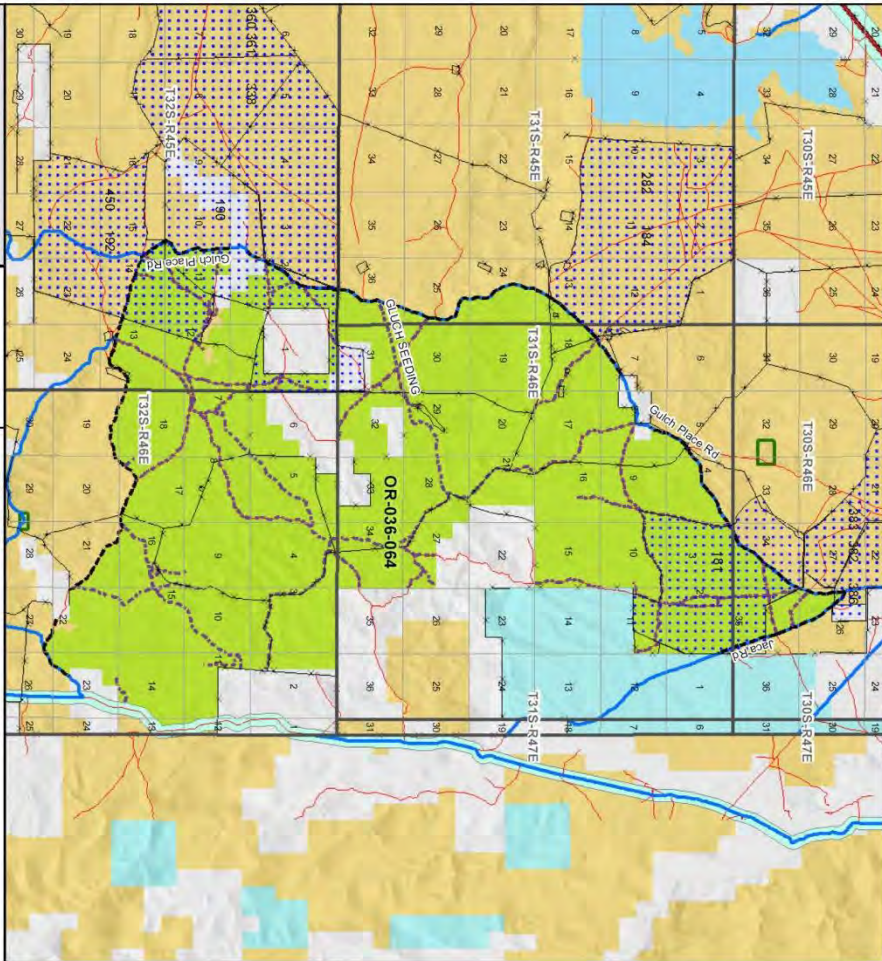
N
W E
S

0 0.5 1 2 Kilometers
0 0.5 1 2 Miles

U.S. DEPARTMENT OF THE INTERIOR
 BUREAU OF LAND MANAGEMENT

VALE DISTRICT
 October 21, 2011
No warranty is made by the Bureau of Land Management as to the accuracy, reliability, or completeness of these data for individual or aggregate use with other data. Original data were compiled from various sources. This information may not meet National Map Accuracy Standards. This product was developed through digital means and may be updated without notification.
--FINAL--

Wilderness Characteristics - Land Treatments
Parship - OR-036-064 - Map 2 of 2



Legend

Land Treatment

- 181 WROTEN & WILLLOW CR ALLOT BURN
- 184 ANTEL OPE FLAT FIRE RX & SEED
- 190 BLACK BUTTE B.C.
- 192 FRANK MAHER B.C. & SDG
- 282 ANTEL OPE FLAT FIRE RX & SEED
- 338 GLUCH B.C.
- 360 GLUCH SDG
- 382 SOLDIER CR SDG
- 383 SOLDIER CR SDG
- 386 SOLDIER CR RES SDG
- 450 FRANK MAHER B.C. & SDG

Other Features

- County Boundary
- Section Boundary
- Water
- Highway
- Other Federal Land

Scale

0 0.5 1 2 Miles

U.S. DEPARTMENT OF THE INTERIOR
 BUREAU OF LAND MANAGEMENT

VALE DISTRICT
 October 21, 2011

-FINAL-

Wilderness Characteristics - Land Treatments
Parship - OR-036-064 - Map 2 of 2

OBJECTID*	NAME	TREATMENT TYPE	SEED GROUP	DATE
181	WROTEN & WILLLOW CR ALLOT BURN	Prescribed Burn	Not Applicable	1984
184	ANTEL OPE FLAT FIRE RX & SEED	Prescribed Burn	Not Applicable	1986
190	BLACK BUTTE B.C.	Chemical Treatment	Not Applicable	1967
192	FRANK MAHER B.C. & SDG	Chemical Treatment	Not Applicable	1969
282	ANTEL OPE FLAT FIRE RX & SEED	Drill Seeding	Combination	1986
338	GLUCH B.C.	Chemical Treatment	Not Applicable	1961
360	GLUCH SDG	Drill Seeding	Non-native Grasses	1961
382	SOLDIER CR SDG	Plow/Disc	Not Applicable	1965
383	SOLDIER CR SDG	Drill Seeding	Non-native Grasses	1955
386	SOLDIER CR RES SDG	Drill Seeding	Non-native Grasses	1958
450	FRANK MAHER B.C. & SDG	Drill Seeding	Non-native Grasses	1969

Note: The Land Treatments represented by navy blue dots on the map to the left are labeled with the treatments' ObjectIDs listed in the first field of the Land Treatments table shown above. Multiple types of treatments may have been applied to the same area. For example, one treatment area may have been plowed and drill seeded - a record is shown in the table for each type of treatment.