

**MEMO**

**September 10, 2018**

**To: Thomas Patrick “Pat” Ryan, Field Manager, Malheur Field Office, Vale District**



**From: Kari Points, Outdoor Recreation Planner, Malheur Field Office, Vale District**

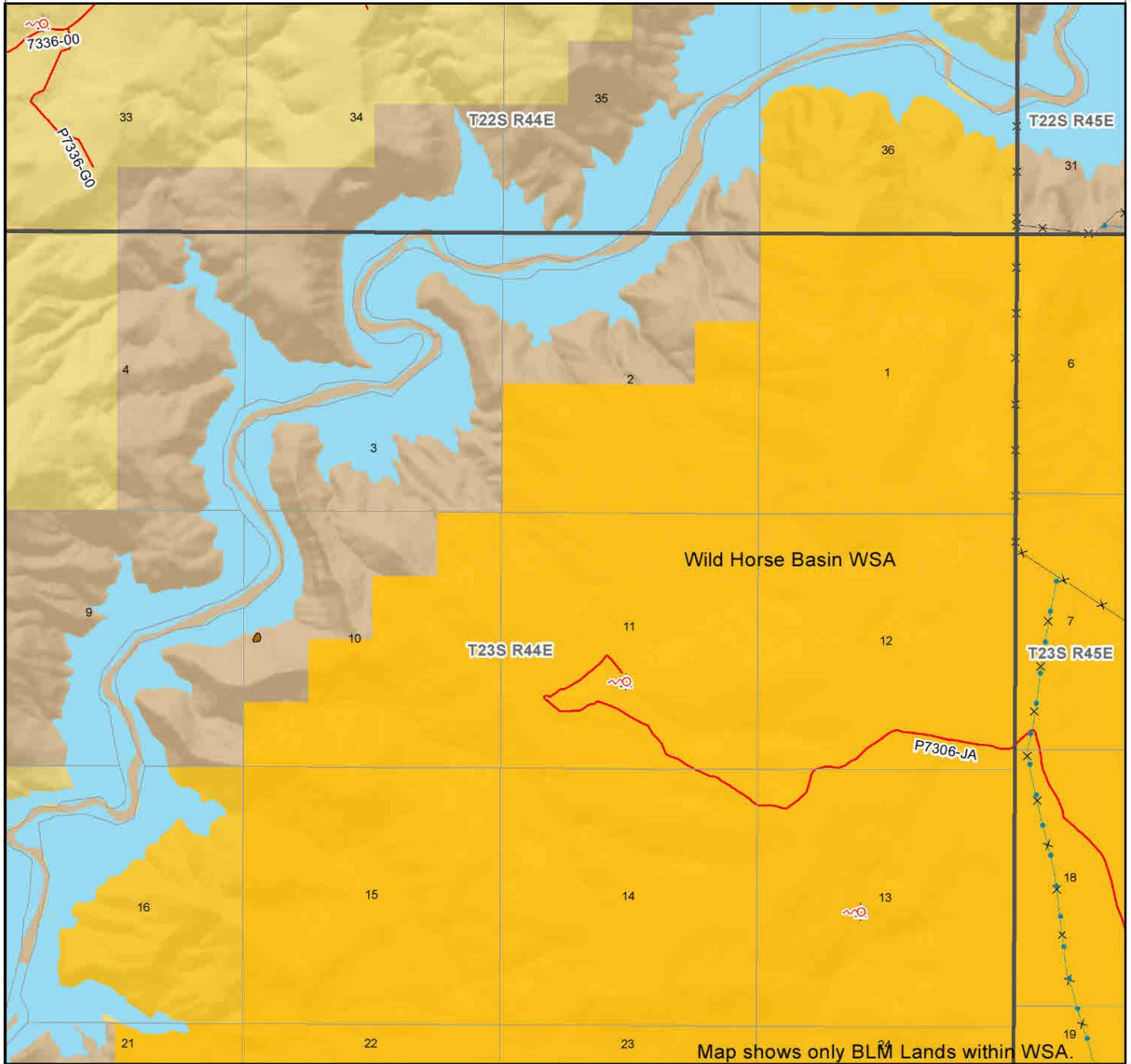
**Subject: Wild Horse Basin Wilderness Characteristics Inventory Unit (OR-034-118)**

The following serves as amended documentation regarding Vale District’s wilderness characteristics inventory maintenance findings. The Inventory Unit was deleted because all parcels are within the existing Wild Horse Basin WSA and had already been inventoried for wilderness characteristics.

The unit was part of the October 1991 Wilderness Study Report (pages 487-494).

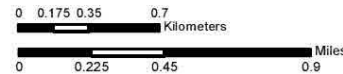
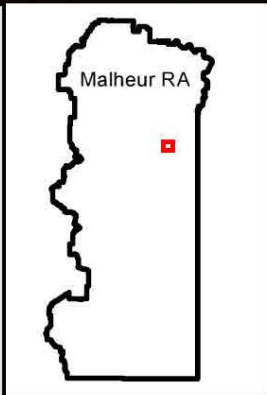
# Wilderness Characteristics - Overview

## Wild Horse Basin Contiguous - OR-034-118 - Map 1 of 1



### Legend

- |   |  |
|---|--|
| <ul style="list-style-type: none"> <li> Developed Spring</li> <li> Wildlife Guzzler</li> <li> Earthen Reservoir</li> <li> Pipeline</li> <li> Trough</li> <li> Fence</li> <li> Storage Tank</li> <li> Surface Mining Disturbance</li> <li> Sage Grouse Lek</li> <li> Special Status Plant</li> <li> BLM Wild Char Inventory Unit</li> <li> Mineral Material Site</li> <li> Road/Utility Right-of-Way</li> <li> Major Water Body</li> </ul> | <p><b>Route Types - BLM Determination</b></p> <ul style="list-style-type: none"> <li> Boundary Road</li> <li> Motorized Primitive Trail (MPT)</li> <li> Discontinued Use</li> </ul> <p><b>Routes - Outside Wild Char Unit</b></p> <ul style="list-style-type: none"> <li> County</li> <li> Major Highway</li> <li> BLM Numbered &amp; Other Routes</li> </ul> <p><b>Land Ownership</b></p> <ul style="list-style-type: none"> <li> Bureau of Land Management</li> <li> State</li> <li> Private</li> <li> Other Federal Land</li> </ul> |
|---|--|



U.S. DEPARTMENT OF THE INTERIOR  
BUREAU OF LAND MANAGEMENT



**VALE DISTRICT**  
September 6, 2018

No warranty is made by the Bureau of Land Management as to the accuracy, reliability, or completeness of these data for individual or aggregate use with other data. Original data were compiled from various sources. This information may not meet National Map Accuracy Standards. This product was developed through digital means and may be updated without notification.

--REVISED-- FINAL--