

MEMO

September 19, 2018

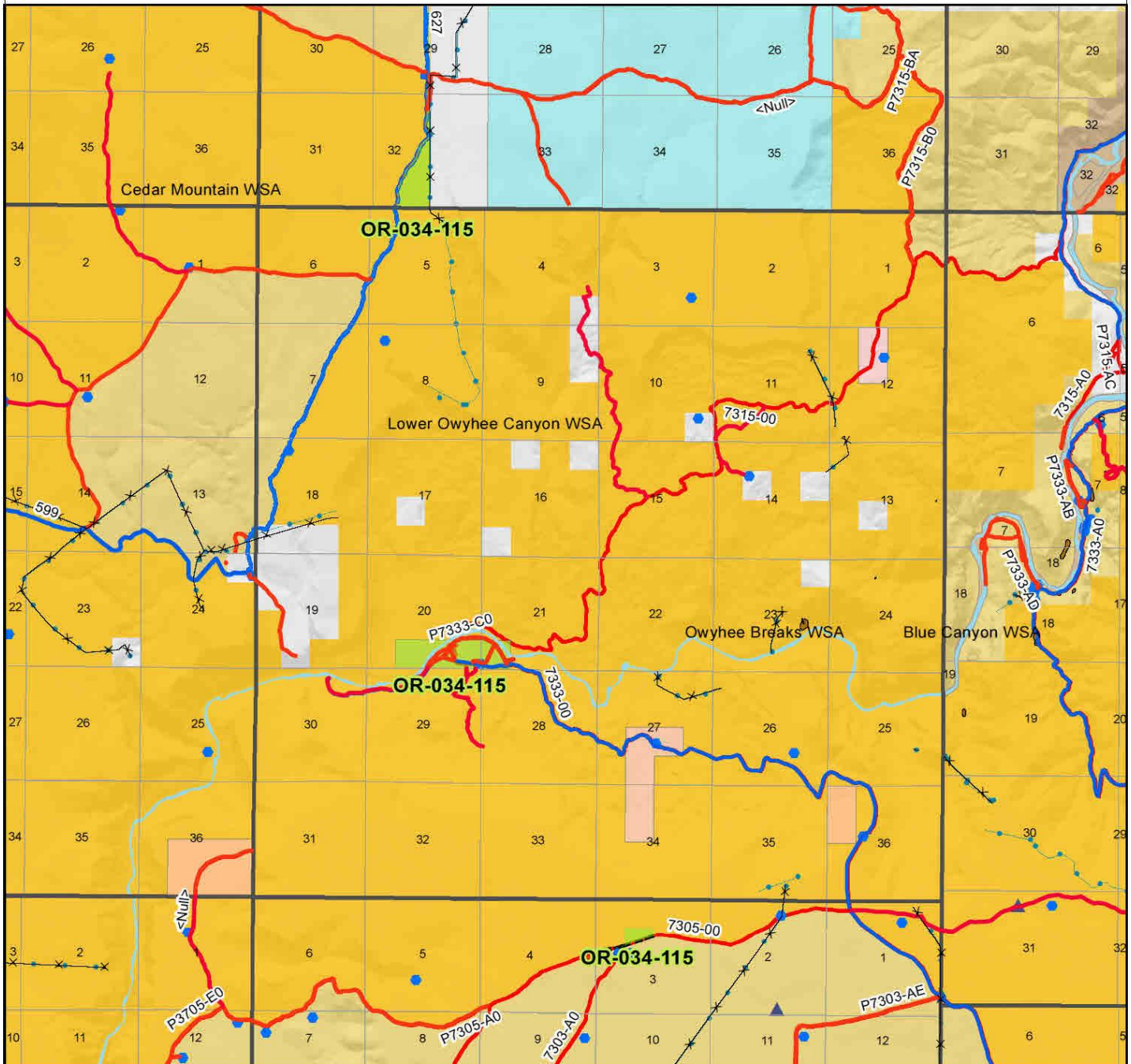
To: Thomas Patrick "Pat" Ryan, Field Manager, Malheur Field Office, Vale District
From: Kari Points Outdoor Recreation Planner, Malheur Field Office, Vale District
Subject: Lower Owyhee Canyon Contiguous Wilderness Characteristics Inventory Unit (OR-034-115)

The memo serves as amended documentation regarding Vale District's wilderness characteristics inventory maintenance findings. This memo updates Lower Owyhee Canyon Contiguous unit inventory report to delete 2 parcels. These 2 parcels were acquired by land exchanged and are within (totally surrounded) by the existing Owyhee Breaks WSA and will be managed as previously addressed in the 2002 SEORMP ROD and consistent with BLM Manual 6330 until such time that they are designated or released by Congress.

SEORMP ROD - "Wilderness Study Areas - WSA's designated under authority of FLPMA sections 603 and 202, will be managed in accordance with the "Interim Management Policy for Land under Wilderness Review" (IMPLWR). Changes in WSA boundaries may be considered for inholdings and minor adjustments of adjacent land. This planning effort will not reopen the initial wilderness review mandated by section 603 of FLPMA, and it will not change existing decisions, signed by the Secretary of the Interior, to recommend areas as suitable for wilderness designation. (2002 BLM, pg. 13)

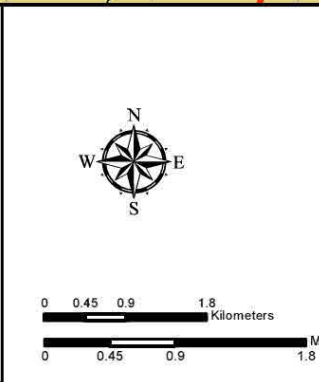
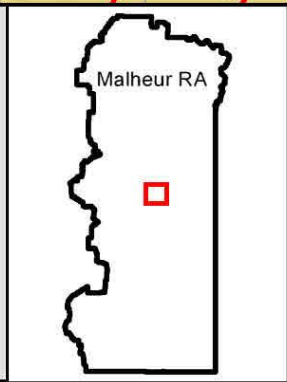
Wilderness Characteristics - Overview

Lower Owyhee Canyon Contiguous - OR-034-115 - Map 1A



Legend

Developed Spring	Route Types - BLM Determination
Earthen Reservoir	Boundary Road
Pipeline	Motorized Primitive Trail (MPT)
Surface Mining Disturbance	Discontinued Use
Sage Grouse Lek	Routes - Outside Wild Char Unit
Special Status Plant	County
Wilderness Study Area	Major Highway
Mineral Material Site	BLM Numbered & Other Routes
Road/Utility Right-of-Way	Land Ownership
Major Water Body	Bureau of Land Management
BLM Wild Char Inventory Unit	State
	Private
	Other Federal Land
	Non-WSA, BLM Rec. Wild. - 1991



U.S. DEPARTMENT OF THE INTERIOR
BUREAU OF LAND MANAGEMENT

VALE DISTRICT
August 29, 2018

No warranty is made by the Bureau of Land Management as to the accuracy, reliability, or completeness of these data for individual or aggregate use with other data. Original data were compiled from various sources. This information may not meet National Map Accuracy Standards. This product was developed through digital means and may be updated without notification.

--REVISED--FINAL--