

NORTHWEST COLORADO TRAVEL MANAGEMENT UPDATE

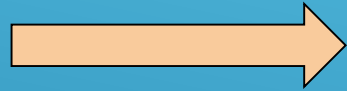
Resource Advisory Council Meeting

Meeker, CO

April 25, 2019

Travel Mgmt Planning is Comprehensive

Motorized



Mechanized



Non-motorized,
Non-mechanized



BLM'S TRAVEL MANAGEMENT PROCESS

- ▶ **RMP-Level Decisions**
 - ▶ **Area Designations**
 - ▶ Open, Closed, Limited Areas
- ▶ **Implementation-Level Decisions**
 - ▶ **Individual Route Designations**
 - ▶ Open, Closed, Limited, Administrative



Designation Criteria for Areas and Routes (43 CFR 8342.1)



Main Criteria:

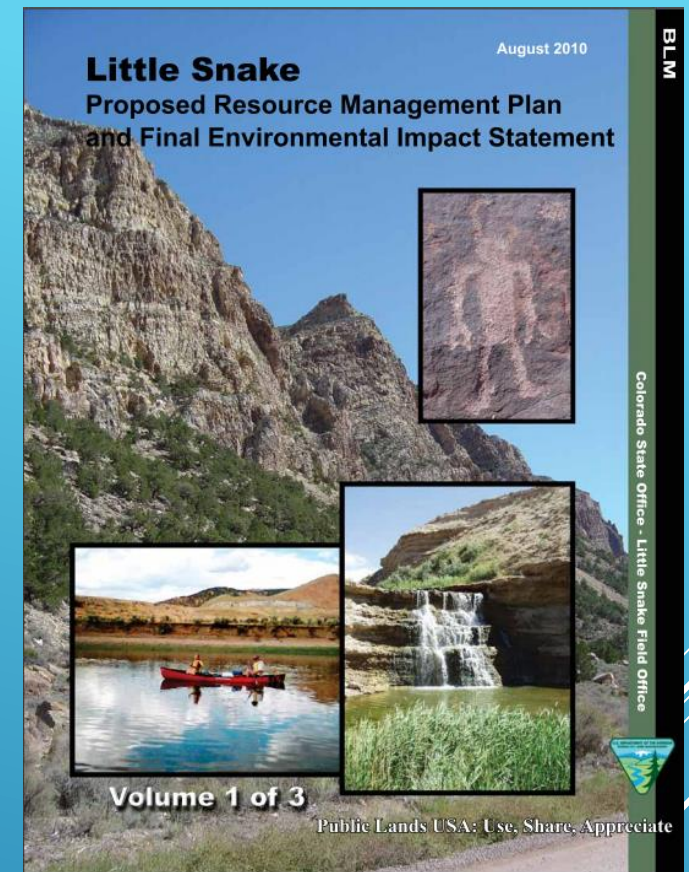
- ▶ Protection of resources
- ▶ Promotion of safety of all public lands users
- ▶ Minimization of conflicts among various uses of the public lands

Additional Criteria:

- ▶ Minimize damage to resources
- ▶ Minimize disruption of fish and wildlife habitats
- ▶ Minimize conflicts between OHV use and other recreational uses
- ▶ Minimize impairment of wilderness values, where applicable

RMP LEVEL DECISIONS

- ▶ Area Designations (Motorized)
 - ▶ All BLM-managed lands.
 - ▶ Made during the land use planning process.
 - ▶ May make area designations for mechanized use.
 - ▶ Designations are criteria-based – BLM must document how the criteria were applied to make the area designation decision in the RMP.
- ▶ Three designations
 - ▶ Open
 - ▶ Limited
 - ▶ Closed (Non-motorized)



IMPLEMENTATION LEVEL DECISIONS

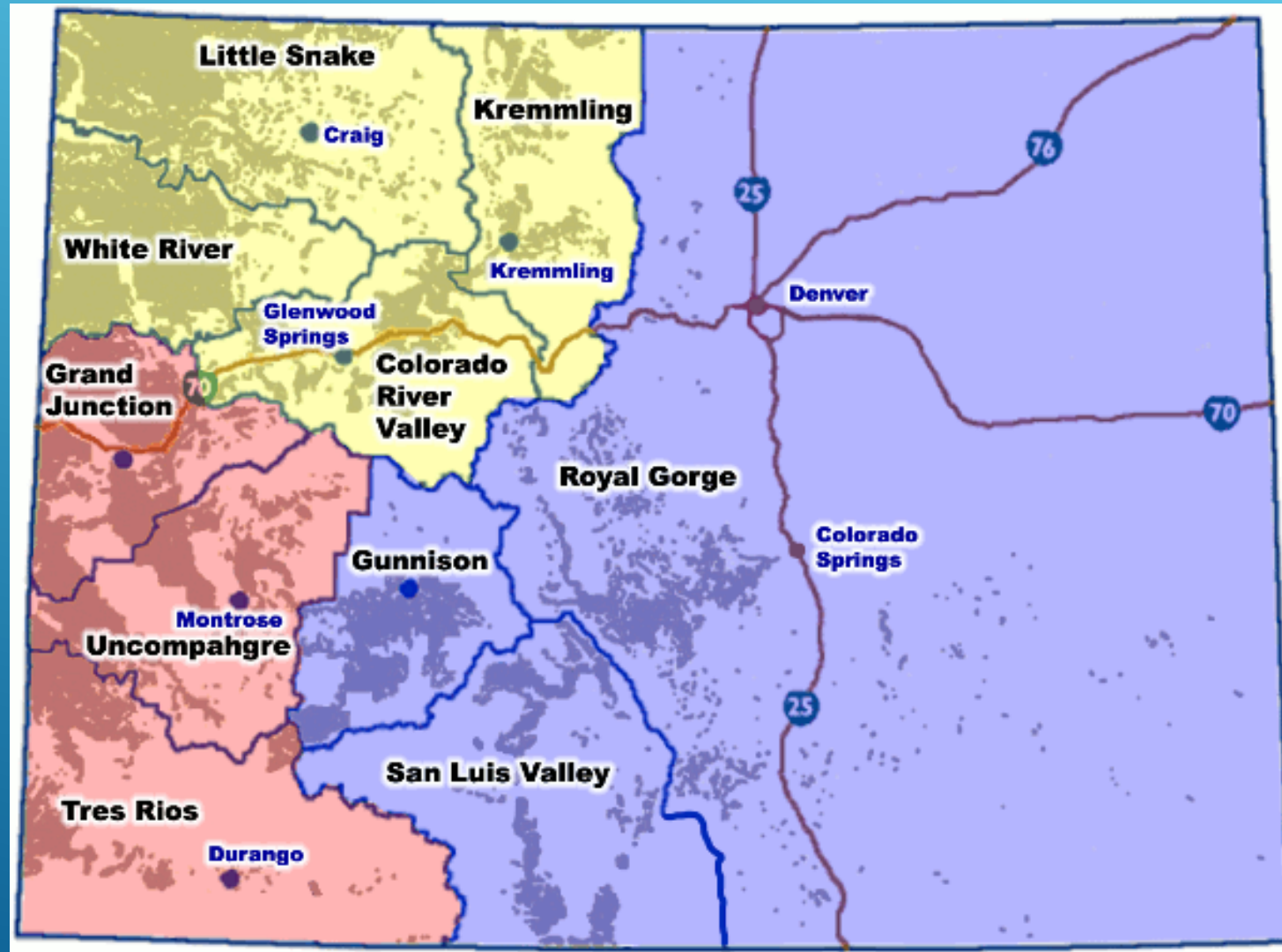
- ▶ Extremely complex - yearslong process
 - ▶ 1,000s of miles of routes in each field office = enormous datasets and many decisions
 - ▶ Break down into smaller Travel Management Areas
 - ▶ Can limit modes of travel, seasons of use, types of users (permittees, ROW holders), etc.
 - ▶ Route-by-route designations
 - ▶ Open
 - ▶ Limited
 - ▶ Closed
 - ▶ Administrative Use Only
- 
- A photograph of two mountain bikers riding on a dirt trail in a desert landscape. The trail is reddish-brown and winds through a valley with sparse green and brown vegetation. In the background, there are large, layered rock formations with natural arches under a clear blue sky. The bikers are in the lower center of the frame, riding away from the viewer.

COMBINED PROGRAMMATIC AGREEMENT FOR TRAVEL MANAGEMENT IN COLORADO

- ▶ LSFO, WRFO, TRFO & UFO.
- ▶ Over 100 consulting parties.
- ▶ BLM unable to complete cultural surveys prior to issuing travel decisions.
- ▶ Phased process for cultural resource identification and evaluation as effects on historic properties cannot be fully determined prior to making travel management decisions.
- ▶ Predictive Model will help focus surveys.
- ▶ Scheduled to be completed in Fall of 2019.

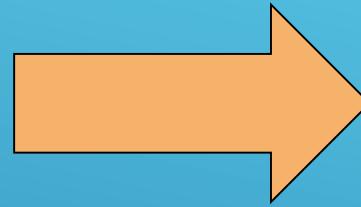


Northwest Colorado District Field Offices



Field Office Travel Management Status

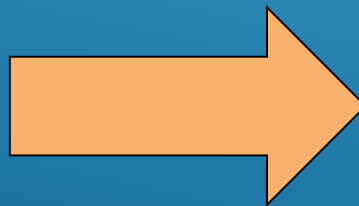
- ▶ Grand Junction Field Office (now SW District)
- ▶ Kremmling Field Office
- ▶ Colorado River Valley Field Office



Completed area designations and route-by-route designations during RMP process.

Completed RMPs in 2015.

- ▶ Little Snake Field Office
- ▶ White River Field Office



LSFO - Area designations completed in 2011 RMP. Working on route-by-route designations.

WRFO - Working on area designations in Travel Mgmt RMPA.

LITTLE SNAKE FIELD OFFICE TRAVEL MANAGEMENT

- ▶ Completed travel management OHV area designations in the 2011 RMP. The RMP made the following designations:

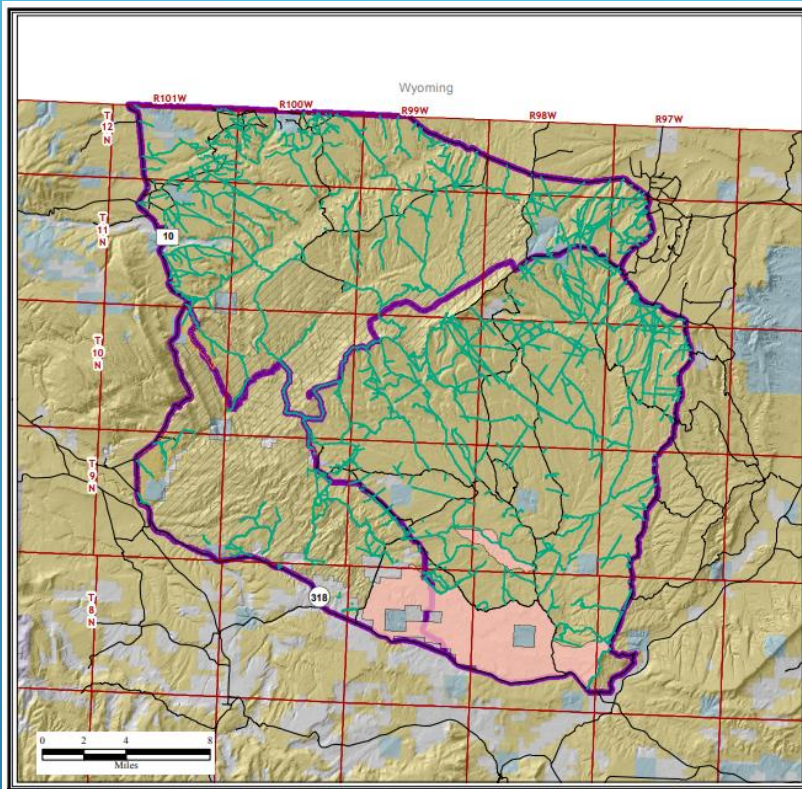
AREAS CLOSED TO MOTORIZED TRAVEL

Diamond Breaks WSA
Cross Mountain WSA
West Cold Spring WSA
Ant Hills WSA
Chew Winter Camp WSA
Peterson Draw WSA
Vale of Tears WSA
Limestone Ridge Area
Serviceberry SRMA, Zone 2
Emerald Mountain SRMA
Maybell Uranium Pit
Fly Creek SRMA

AREAS LIMITED TO DESIGNATED ROADS AND TRAILS

Irish Canyon ACEC
Lookout Mountain Area
Little Yampa Canyon SRMA
Juniper Mountain SRMA
Cedar Mountain SRMA
South Sand Wash SRMA, Zone 2
Serviceberry SRMA, Zone 1
Cottonwood Creek Area
Dinosaur North (Managed for Wilderness Character)
Cold Spring Mountain (Managed for Wilderness Character)
Browns Park Cellular Site
Hoy Mountain Area
Vermillion Basin PMA

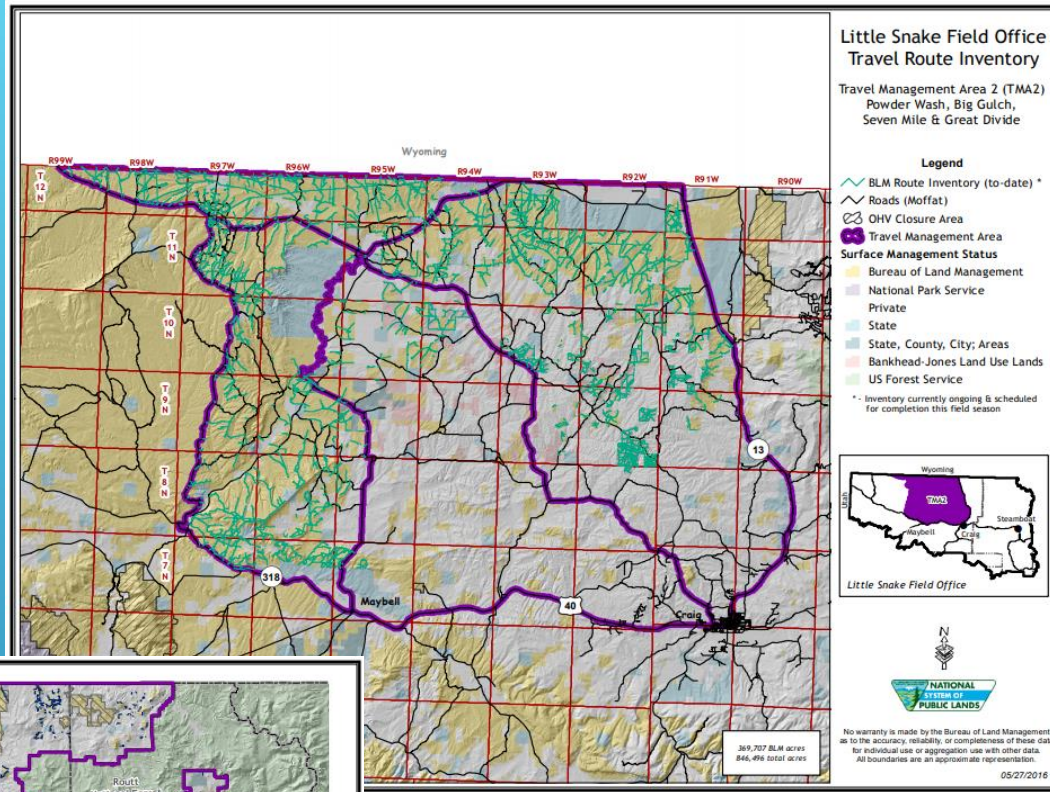
All other areas not included in closed/limited areas are going through the travel management process.



Little Snake Field Office Travel Route Inventory

Unit 1
Hiawatha, Sand Wash & Bears Ears

- Legend**
- BLM Route Inventory
 - Roads (Moffat)
 - Travel Management Area
 - Open OHV Area *
- Vermillion**
- No Wilderness Character
 - Wilderness Character *
- Surface Management Status**
- Bureau of Land Management
 - National Park Service
 - Private
 - State
 - State, County, City; Areas
- * Area not included in Route Analysis at this time



Little Snake Field Office Travel Route Inventory

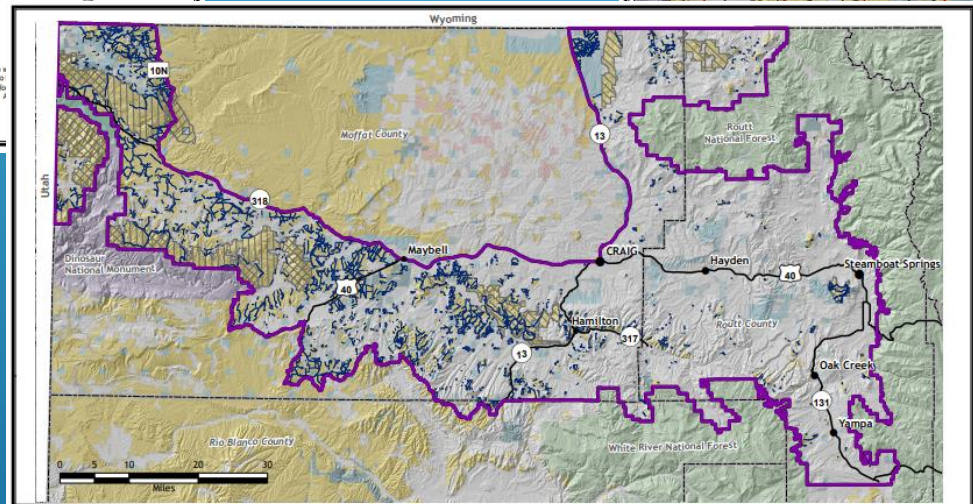
Travel Management Area 2 (TMA2)
Powder Wash, Big Gulch,
Seven Mile & Great Divide

- Legend**
- BLM Route Inventory (to-date) *
 - Roads (Moffat)
 - OHV Closure Area
 - Travel Management Area
- Surface Management Status**
- Bureau of Land Management
 - National Park Service
 - Private
 - State
 - State, County, City; Areas
 - Bankhead-Jones Land Use Lands
 - US Forest Service
- * Inventory currently ongoing & scheduled for completion this field season.



No warranty is made by the Bureau of Land Management as to the accuracy, reliability, or completeness of these data for individual use or aggregation use with other data. All boundaries are an approximate representation.

05/27/2016



Little Snake Field Office Travel Management Area 3 Draft Linear Inventory

- Legend**
- TMA3 Boundary
 - Draft Linear Inventory
 - Area of Critical Environmental Concern
 - Managed for Lands with Wilderness Characteristics
 - Special Recreation Management Area
 - Wilderness Study Area
- Surface Management Status**
- Bureau of Land Management
 - National Park Service
 - Private
 - State
 - State, County, City; Areas
 - Bankhead-Jones Land Use Lands
 - US Fish and Wildlife Service
 - US Forest Service



Although the data presented within this map, and the map itself, have been processed successfully on computers of BLM, no warranty, expressed or implied, is made by BLM regarding the use of this map or the data represented, nor does the fact of distribution constitute or imply any such warranty.

03/14/2018

LSFO Travel Management Area NEPA Status

- ▶ **TMA 1**
 - ▶ EA is completed, but not signed.
 - ▶ Can sign once PA is complete.
- ▶ **TMA 2**
 - ▶ Public comment period on EA closed on April 3, 2019.
 - ▶ LSFO IDT evaluating comments and incorporating them into the Final EA as applicable.
 - ▶ Will begin developing the Final EA once all comments have been evaluated.
- ▶ **TMA 3**
 - ▶ Completed Route Inventory Public Meeting on March 14th.
 - ▶ IDT completing draft route-by-route designations in early May.
 - ▶ Once draft route-by-route designations are complete, expect to release Preliminary EA in Fall, 2019.



LSFO Travel Management Process

- ▶ **Route Inventory**
 - ▶ Completed in-house using permanent staff, seasonals and interns.
- ▶ **Route Inventory Public Scoping**
 - ▶ Meetings were held with cooperators and the public to review inventoried routes and present the purpose and need.
 - ▶ Comments were evaluated and incorporated into a final inventory. These meetings are specific to each travel management area.
- ▶ **Internal Scoping**
 - ▶ Internal scoping is conducted to provide input into the TRAMS model and preliminary alternative and criteria development.
 - ▶ ID Team evaluates each inventoried route and makes a recommendation on a preliminary designation.
- ▶ **Route Designation Meetings with Cooperator and Public Scoping**
 - ▶ Present ID Team designation recommendations to cooperators and the public.



The output of the TRAMS process results in a route report for each segment of each route



LSFO TMA 1 - Route Report

Phase I - Inventory

Segment Number: 1.0008 Surface: Natural Use Class: 2wd Source: BLM Inventory
 Route Number: None Width: 4 meters Use Level: Light Source Type: GPS
 Miles: 0.19 Construction: Use Deadend: No Inventory Date: 8/29/2012
 Inventory Comments: no inventory comment BLM RMP Designated Route: No
 Damage: No

Phase II - Management Framework

Approved Resource Management Plan: Little Snake Approved Resource Management Plan (October 2011), Northwest Colorado Greater Sage-Grouse Approved Resource Management Plan Amendment (September 2015)

Phase III - Suitability

Forestry: No Benefit Water Resources: No Risk
 Recreation: Low Benefit Fish and Wildlife: Moderate Risk
 Wildland Fire Management: High Benefit Cultural: Considered but not shown on this report.
 Energy Minerals: High Benefit Paleo: Considered but not shown on this report.
 Livestock/Grazing/Range: Low Benefit Soils: No Risk
 Lands and Realty: Moderate Benefit Special Status Species: Considered but not shown on this report.
 Transportation Access: Moderate Benefit Visual: Low Risk

Phase IV - Route Benefit / Risk Analysis

Combined Benefit/Risk Rating: Moderate Benefit / Low Risk

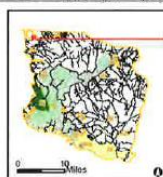
Phase V - Route Alternatives

	Alternative A	Alternative B	Alternative C	Alternative D
Type	Primitive Road	Transportation Linear Disturbance	Primitive Road	Primitive Road
Mode	Motorized	OHV Closed	Motorized	Motorized
Objective	Multiple Use	Restoration	Multiple Use	Multiple Use
Designation	Open	Closed/Decommissioned	Open	Limited Seasonally
Rationale	Enables Access, Per LSFO 2011 RMP	Closed Per 43 CFR 8342.1	Enables Access Per LSFO 2011 RMP	Enables Seasonal Access and is Limited Per LSFO 2011 RMP and 43 CFR 8342.1

bance

Affected Environment - Miles of Resources

Elk Severe Winter Range: 0.00
 Elk Winter Concentration: 0.00
 Elk Winter Range: 0.00
 Elk Production Area: 0.00
 Pronghorn Res Population: 0.19
 Pronghorn Severe Winter Range: 0.00
 Pronghorn Winter Concentration: 0.19
 Pronghorn Winter Range: 0.19
 Mule Deer Winter Range: 0.19
 GHMA/PHMA: 0.03 / 0.16
 Intermittent 10ft Buffer: 0.00
 Perennial 50ft Buffer: 0.00
 Wetland 50ft Buffer: 0.00
 Presence of WC: 0.00
 Slope 10%: 0.00
 VRM Class 1 and 2: 0.00
 VRM Class 3: 0.00
 VRM Class 4: 0.19
 Fragile Soils: 0.00



Land Management
 BLM
 State
 Vermillion Area
 South Sandwash SRMA
 Irish Canyon ACEC



NOTE: This report is a summary of the evaluation process. For further explanation and data a descriptor see the Route Evaluation Report. Source: Esri, DigitalGlobe, GeoEye, Earthstar Geographics, CNES/Airbus DS, USDA, USGS, AeroGRID, IGN, and the GIS User Community

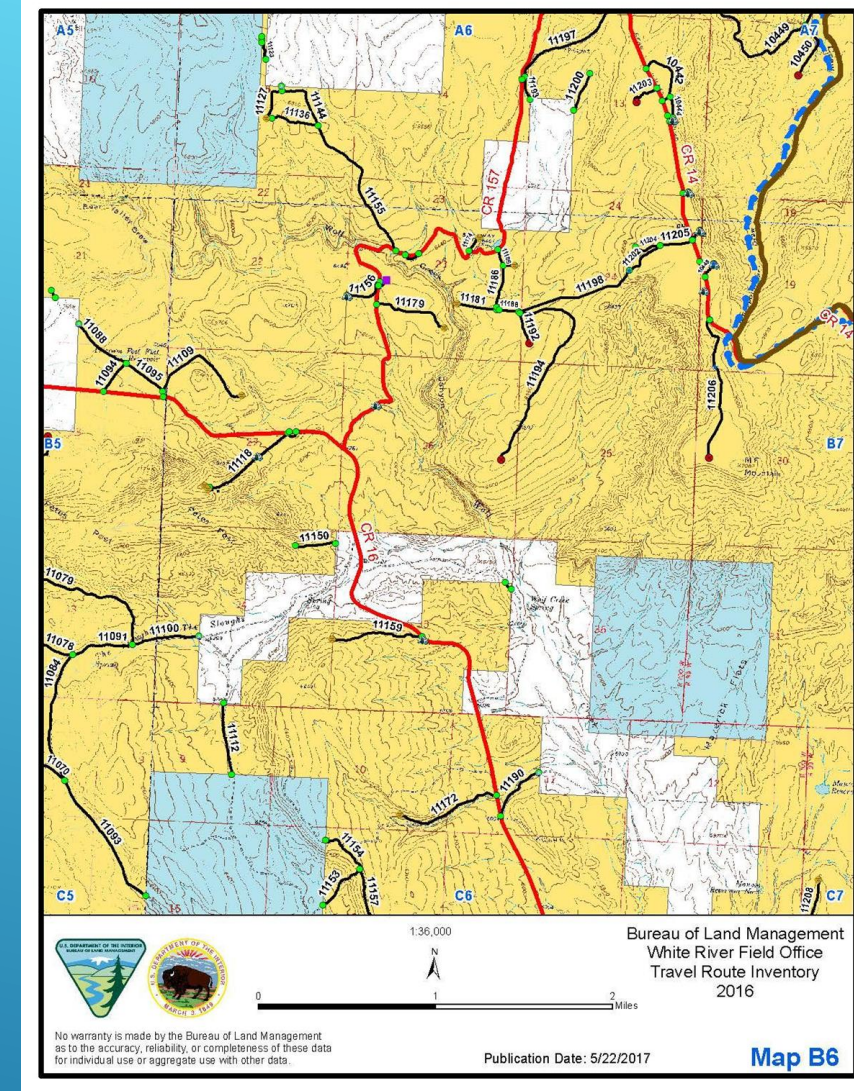
LSFO Travel Management Process

- ▶ Draft/Preliminary EA
 - ▶ EA is drafted for each TMA. Cooperating agencies review the draft EA prior to release to the public.
- ▶ Public Comment Period
- ▶ Final EA, FONSI, and Decision Record
 - ▶ Comments are addressed and incorporated into the final EAs - with only one Decision Record for all three TMA EAs.
 - ▶ Originally three decision records were anticipated (Programmatic Agreement).



WRFO Strategy to Complete Travel Mgmt Planning

- ▶ Inventory (map) all travel routes. 2014-2016
- ▶ Amend RMP decisions related to travel mgmt. 2015-2019
- ▶ Designate allowable uses on individual routes within limited areas. Start first TMP in 2020. (Divide WRFO into 5-10 TMPs)



WRFO is 1.5 million acres of BLM-managed public land with about 4,505 miles of BLM routes.

Public & Cooperating Agency Involvement

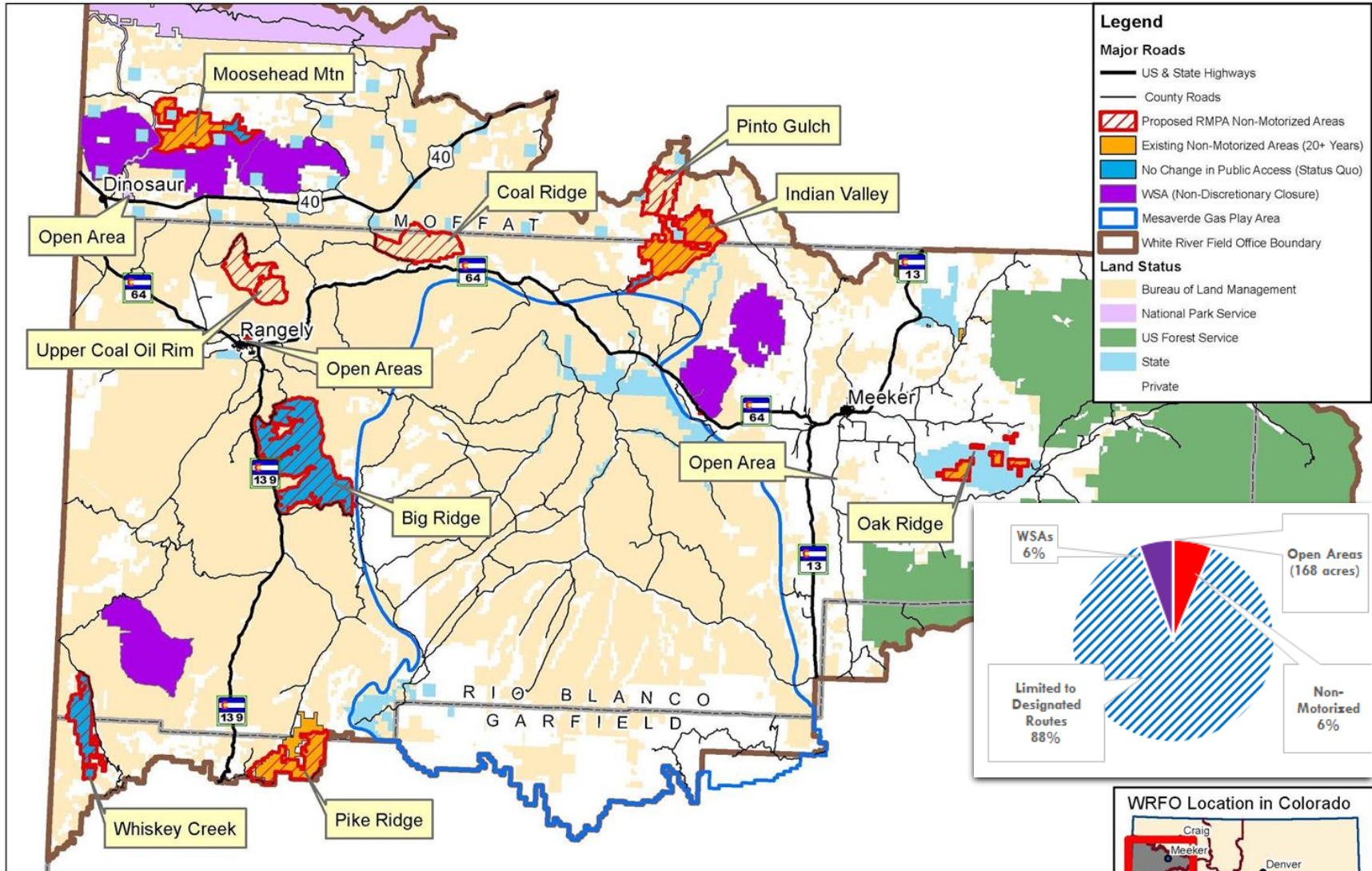
- ▶ **Two-Day Travel Management Training (Mar 2015)**
 - ▶ Included BLM staff, NW RAC Subgroup, Cooperating Agencies
- ▶ **Scoping (NOI in October 2015)**
 - ▶ Cooperating Agency Meeting
 - ▶ Public Meetings in Meeker and Rangely
 - ▶ NW RAC Travel Mgmt Subgroup Meeting in Meeker
- ▶ **Public Review of Prelim. Alts (Aug 2016)**
 - ▶ Cooperating Agency Meeting
 - ▶ Public Meetings in Meeker and Rangely
 - ▶ Public Field Tours of the Four Open Areas
 - ▶ NW RAC Travel Mgmt Subgroup Meeting in Meeker
- ▶ **Public Review of Draft RMPA/EA and FONSI (Aug 2018)**
 - ▶ Cooperating Agency Meeting
 - ▶ Public Meeting in Meeker



NW RAC Subgroup

User Group/Interest	Category	Name	Agency/Group	Town
Livestock Grazing Permittee	1	Jerry Oldland	N/A	Rifle, CO
Oil & Gas	1	Annette Garrigues	Williams	Parachute, CO
Motorized (OHV)	1	Alvin Jones	Wagon Wheel OHV Club	Meeker, CO
Motorized (OHV)	1	Brad Casto	N/A	Rangely, CO
Motorized (OHV)	1	David Bray	Yampa Valley Trail Riders	Craig, CO
Special Recreation Permit Holder (Outfitter)	1	Monty Elder	Rim Rock Outfitters	Rangely, CO
Wilderness/Roadless Areas	2	Soren Jespersen	The Wilderness Society	Craig, CO
Sportsmen (Hunters/Anglers)	2	Nick Payne	Theodore Roosevelt Conservation Partnership	Denver, CO
Sportsmen (Anglers)	2	Aaron Kindle	Trout Unlimited	Denver, CO
Environment/Wildlife	2	Sasha Nelson	Conservation Colorado	Craig, CO
Non-Motorized (Hiker/Biker)	2	Roy Wedding	N/A	Meeker, CO
Non-Motorized (Hiker/Biker)	2	Don Peach	N/A	Rangely, CO
Equestrian	2	Diane Mobley	White River Riders Saddle Club	Meeker, CO

WRFO Travel RMPA (Draft Proposed RMPA)



Legend

Major Roads

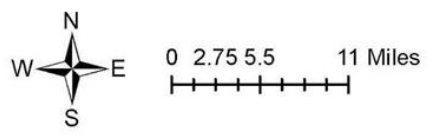
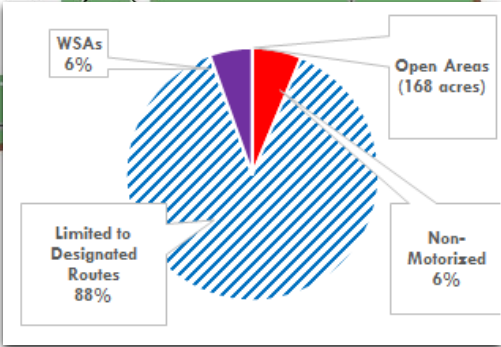
- US & State Highways
- County Roads

Proposed RMPA Non-Motorized Areas

- Proposed RMPA Non-Motorized Areas (Red hatched)
- Existing Non-Motorized Areas (20+ Years) (Orange)
- No Change in Public Access (Status Quo) (Blue)
- WSA (Non-Discretionary Closure) (Purple)
- Mesaverde Gas Play Area (Light Blue)
- White River Field Office Boundary (Brown outline)

Land Status

- Bureau of Land Management (Yellow)
- National Park Service (Light Purple)
- US Forest Service (Green)
- State (Light Blue)
- Private (White)



BLM - White River Field Office
 220 E. Market St.
 Meeker, CO 81641
 Map by: HS 4/24/2019

Disclaimer: Although the data presented within this map, and the map itself, have been processed successfully on computers of BLM, no warranty, expressed or implied, is made by BLM regarding the use of this map or the data represented, nor does the fact of distribution constitute or imply any such warranty.

Next steps...

- ▶ **BLM Responds to Comments & Develops Proposed RMPA**

- ▶ Cooperating Agency Review of Proposed RMPA – Mtg on May 9, 2019
- ▶ Internal BLM Review of Proposed RMPA

- ▶ **Proposed RMPA/EA and FONSI (Final EA)**

- ▶ 30-day Public Protest Period (July 2019)
- ▶ 60-day Governor's Consistency Review

- ▶ **Complete Consultations**

- ▶ Section 7 Consultation with U.S. Fish & Wildlife Service
- ▶ Section 106 Consultation with State Historic Preservation Office (PA)

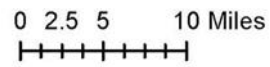
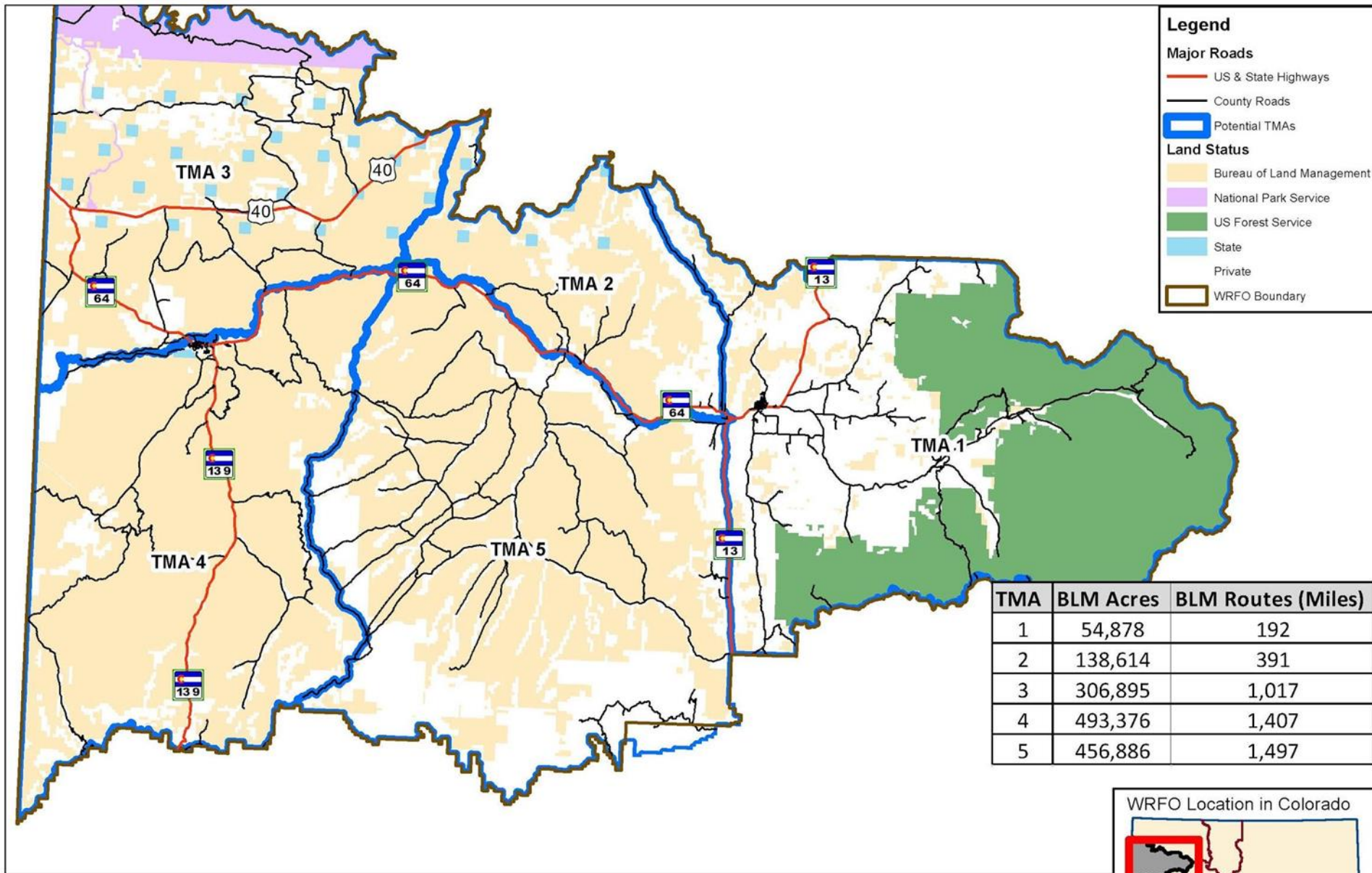
- ▶ **Issue Decision Record/RMP Amendment (September 2019)**

- ▶ **Begin Implementation Planning (Travel Management Plans)**

Next steps TMPs...

- ▶ **TMP 1**
 - ▶ Focused recreation areas such as...
 - ▶ Anderson Gulch Parcel
 - ▶ LO7 Parcel
 - ▶ Rangely Rock Crawling Park
 - ▶ Timeline
 - ▶ Complete cultural surveys in summer 2019
 - ▶ Complete NEPA in winter 2019/2020
 - ▶ Implement (sign) in Summer 2020
- ▶ **Other TMPs**
 - ▶ Currently planning to divide WRFO by GMUs
 - ▶ Order of TMPs depends largely on funding
 - ▶ Cultural surveys (contract)
 - ▶ Survey needs based on predictive model





BLM - White River Field Office
 220 E. Market St.
 Meeker, CO 81641
 Map by: HS 3/13/19

Disclaimer: Although the data presented within this map, and the map itself, have been processed successfully on computers of BLM, no warranty, expressed or implied, is made by BLM regarding the use of this map or the data represented, nor does the fact of distribution constitute or imply any such warranty.



QUESTIONS?

