

Wilderness Inventory Unit Index of Documents
McCarthy Ridge OR-034-102, 10 total pages

Page 1: Index Cover Sheet

[Page 2: Form 1 – Documentation of BLM Wilderness Inventory: Findings on Record](#)

[Page 5: Form 2 – Documentation of Current Wilderness Inventory Conditions](#)

[Page 8: Form 2 – Summary of Findings and Conclusion](#)

[Page 9: Wilderness Characteristics Overview – McCarthy Ridge OR-034-102 Map 1 of 2](#)

[Page 10: Wilderness Characteristics-Land Treatments-McCarthy Ridge OR-034-102 Map 2 of 2](#)

Prepared by:
U.S. Department of the Interior
Bureau of Land Management
Vale District Office
100 Oregon Street
Vale, Oregon 97918



H-6300-1-WILDERNESS INVENTORY MAINTENANCE IN BLM OREGON/WASHINGTON

APPENDIX B – INVENTORY AREA EVALUATION

Evaluation of Current Conditions:

- 1) Document and review the existing BLM wilderness inventory findings on file, if available, regarding the presence or absence of individual wilderness characteristics, using Form 1, below.
- 2) Consider relevant information regarding current conditions available in the office to identify and describe any changes to the existing information (use interdisciplinary (ID) team knowledge, aerial photographs, field observations, maps, etc.), and document your findings on Form 2, below.

When Citizen Information has been submitted regarding wilderness characteristics, document the submitted materials including: date of Submission; Name of District(s) and Field Office(s) Affected; Type of material Submitted (e.g. narrative, map, photo). Evaluate any submitted citizen information regarding the validity of proposed boundaries of the unit(s), the existence of roads and other boundary features, the size of the unit(s), and the presence or absence of wilderness characteristics based on relevant information available in the office (prior BLM inventories, ID team knowledge, aerial photographs, field observations, maps, etc.)

Conduct field reviews as necessary to verify information and to ascertain current conditions. Reach conclusions on current conditions including boundaries, size of areas and presence or absence of wilderness characteristics. Fully explain the basis for each conclusion on form 2, including any critical differences between BLM and citizen information.

Document your findings regarding current conditions for each inventoried area. Describe how the present conditions are similar to, or have changed from, the conditions documented in the original wilderness inventory. Document your findings on Form 2 for each inventory area. Cite to or attach data considered, including photographs, maps, GIS layers, field trip notes, project files, *etc.*

Year: 2010 **Unit Number/Name:** OR-034-102 — McCarthy Ridge

**FORM 1 -- DOCUMENTATION OF BLM WILDERNESS INVENTORY
FINDINGS ON RECORD**

1. Is there existing BLM wilderness inventory information on all or part of this area?

Yes No (If yes, and if more than one unit is within the area, list the names of those units.):

A.) Inventory Source(s) -- (X) Denotes all applicable BLM Inventory files, printed maps, or published BLM Decision documents with information pertaining to this unit.

Wilderness Inventories

- (X) 1978 – BLM Wilderness Inventory Unit OR-03-01-15 Beirman Springs (unpublished BLM document in case files)
- () April 1979 – *Wilderness -- Proposed Initial Inventory – Roadless Areas and Islands Which Clearly Do Not have Wilderness Characteristics, Oregon and Washington*

Wilderness Decision Documents

- () August 1979 – *Wilderness Review – Initial Inventory, Final Decision on Public Lands Obviously Lacking Wilderness Characteristics and Announcement of Public Lands to be Intensively Inventoried for Wilderness Characteristics, Oregon and Washington* (green document)
- () October 1979 – *Wilderness Review – Intensive Inventory - Oregon, Proposed Decision on the Intensive Wilderness Inventory of Selected Areas* (grey document).
- () March 1980 – *Wilderness Review – Intensive Inventory; Final Decisions on 30 Selected Units in Southeast Oregon and Proposed Decisions on Other Intensively Inventoried Units in Oregon and Washington* (orange document)
- () November 1980 - *Wilderness Inventory – Oregon and Washington, Final Intensive Inventory Decisions* (brown document)
- () November 1981 *Stateline Intensive Wilderness Inventory Final Decision, Oregon, Idaho, Nevada, Utah* (tan document).

B.) Inventory Unit Name(s)/Number(s)

BLM OR-03-01-15 Beirman Springs

C.) Map Name(s)/Number(s)

- () Final Decision – Initial Wilderness Inventory Map, August 1979, Oregon
- () Proposed Decision -- Intensive Wilderness Inventory of Selected Areas Map, October 1979, Oregon
- () Intensive Wilderness Inventory Map, March 1980, Oregon
- () Intensive Wilderness Inventory --Final Decisions Map, November 1980, Oregon
- () November, 1981 *Stateline Intensive Wilderness Inventory Final Decision, Oregon, Idaho, Nevada, Utah* (tan document).

D.) BLM District(s)/Field Office(s)

Vale District Office / Malheur Field Office

2. BLM Inventory Findings on Record

(Existing inventory information regarding wilderness characteristics (if more than one BLM inventory unit is associated with the area, list each unit and answer each question individually for each inventory unit):

Inventory Source: See above.

Unit#/ Name	Size (historic acres)	Natural Condition? Y/N	Outstanding Solitude? Y/N	Outstanding Primitive & Unconfined Recreation? Y/N	Supplemental Values? Y/N
OR-03-01- 15 Beirman Springs	4,310	*	*	*	*
TOTAL	4,310				

* -- These criteria were not specifically addressed during the inventory of this unit since the unit did not meet minimum size criteria.

H-6300-1-WILDERNESS INVENTORY MAINTENANCE IN BLM OREGON/WASHINGTON

APPENDIX B – INVENTORY AREA EVALUATION

Evaluation of Current Conditions:

- 1) Document and review the existing BLM wilderness inventory findings on file, if available, regarding the presence or absence of individual wilderness characteristics, using Form 1, below.
- 2) Consider relevant information regarding current conditions available in the office to identify and describe any changes to the existing information (use interdisciplinary (ID) team knowledge, aerial photographs, field observations, maps, etc.), and document your findings on Form 2, below.

When Citizen Information has been submitted regarding wilderness characteristics, document the submitted materials including: date of Submission; Name of District(s) and Field Office(s) Affected; Type of material Submitted (e.g. narrative, map, photo). Evaluate any submitted citizen information regarding the validity of proposed boundaries of the unit(s), the existence of roads and other boundary features, the size of the unit(s), and the presence or absence of wilderness characteristics based on relevant information available in the office (prior BLM inventories, ID team knowledge, aerial photographs, field observations, maps, etc.)

Conduct field reviews as necessary to verify information and to ascertain current conditions. Reach conclusions on current conditions including boundaries, size of areas and presence or absence of wilderness characteristics. Fully explain the basis for each conclusion on form 2, including any critical differences between BLM and citizen information.

Document your findings regarding current conditions for each inventoried area. Describe how the present conditions are similar to, or have changed from, the conditions documented in the original wilderness inventory. Document your findings on Form 2 for each inventory area. Cite to or attach data considered, including photographs, maps, GIS layers, field trip notes, project files, *etc.*

FORM 2 -- DOCUMENTATION OF CURRENT WILDERNESS INVENTORY CONDITIONS

Unit Number/Name: OR-0347-102 — McCarthy Ridge

Description of Current Conditions: [Include land ownership, location, topography, vegetation features and summary of major human uses/activities.]

1. Is the unit of sufficient size?

Yes X No

Description: Refer to this inventory unit's associated Map 1 for its location. The unit has 6,175 acres of public land. The unit represents a larger area than the BLM 1978 inventory unit because the north-south oriented route through sections 21, 22, 27 and 34 has changed status to a motorized primitive trail (MPT) due to no known mechanical maintenance performed and BLM not intending to provide such maintenance on the route in the future.

The unit's boundaries are county road 730 and private land on its north side, a small segment of county road 750 and private lands on its east side, private lands and county road 750 on its south side, and county roads 531 and 539 on its west side. The boundary roads are mechanically maintained as needed to provide for relatively regular and continuous use.

2. Is the unit in a natural condition?

Yes X No N/A

Description: The north-south oriented McCarthy Ridge traverses the width of the unit through the unit's middle. Elevations range from 2,500 to 5,074 feet. Gradients of incised terrain cut by multi-directional drainages are predominately steeper in the unit's approximate southern two thirds; gradients are more moderate to slight elsewhere. Vegetation is predominately native and non-native grasses and sagebrush.

Refer to this unit's associated Map 1 and Map 2 for human imprints. There are 8.3 miles of 6 motorized primitive trails (MPTs, 2 of which traverse the unit's north-south oriented width), 7.5 miles of rangeland fences, and 2 earthen reservoirs. There remains virtually no visual contrast of two segments of abandoned routes. In the unit's east half, there remains no visually contrasting evidence of 1966, 1970 and 1980 disc-drilled seedings of both native and non-native grasses. The linear furrows of 2006 disc drilled seedings of native grasses in 4 small separate areas within the unit (totaling approximately 250 acres) are visually evident. Even when accounting for the visual contrasts of the 2006 seedings, their overall limited extent and locations (abutting boundary roads) combined with the types of the other developments results in the unit appearing to be affected primarily by

the forces of nature with the imprint of humans substantially unnoticeable to the average visitor.

3. Does the unit have outstanding opportunities for solitude?

Yes _____ No X N/A _____

Description: The unit has insufficient vegetative cover for screening between visitors to provide for outstanding opportunities for solitude. The unit is basically rectangular in shape, its greatest north- south width being about 2.2 miles although pinching to 0.75 – 1.2 miles on its east and west ends; its length through its middle is approximately 5 miles. While the unit’s southern more rugged terrain possesses topographic variances which provide settings where a visitor can sense being isolated, the opportunities are not outstanding due to the unit’s narrow width combined with the more moderate to slight gradients associated with the unit’s northern approximate third. These cumulative circumstances result in the unit not providing outstanding opportunities for solitude. It is also recognized that visual and/or audible impacts by motorized travel on the unit’s 2 MPTs that dissect the unit’s width through the unit’s central core – and being separated by only 0.5 to 1.2 miles – does not benefit an experience of feeling isolated.

4. Does the unit have outstanding opportunities for primitive and unconfined recreation?

Yes _____ No X N/A _____

Description: The primary recreation is hunting of common game species (primarily deer, elk and chukar) and associated hiking. The unit possesses no special or unique features which would draw visitors to it. Individually or in combinations, the activities do not provide outstanding opportunities for primitive and unconfined recreation.

5. Does the unit have supplemental values?

Yes X No _____ N/A _____

Description: A small site of *Pyrrocoma radiata*, ray goldenweed -- a BLM special status plant species -- is documented.

Summary of Findings and Conclusion

Unit Name and Number: OR-034-102 — McCarthy Ridge

Summary Results of Analysis:

- 1. Does the area meet any of the size requirements? Yes No
- 2. Does the area appear to be natural? Yes No
- 3. Does the area offer outstanding opportunities for solitude or a primitive and unconfined type of recreation? Yes No NA
- 4. Does the area have supplemental values? Yes No NA



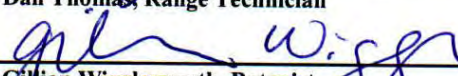
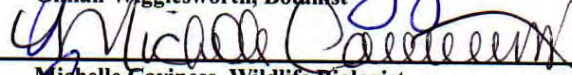
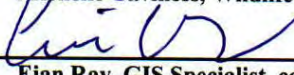
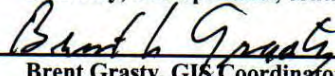
Conclusion -- check one:

The area, or a portion of the area, has wilderness character.

The area does not have wilderness character.

Prepared by: 
Robert Alward, Wilderness Planner contractor

Team Members:

- | | |
|--|-----------------|
| <u></u> | <u>12/6/10</u> |
| Garry Brown, Rangeland Management Specialist | Date |
| <u></u> | <u>12/6/10</u> |
| Dan Thomas, Range Technician | Date |
| <u></u> | <u>12/6/10</u> |
| Gillian Wigglesworth, Botanist | Date |
| <u></u> | <u>12/10/10</u> |
| Michelle Caviness, Wildlife Biologist | Date |
| <u></u> | <u>12-6-10</u> |
| Eian Ray, GIS Specialist, contractor | Date |
| <u></u> | <u>12/9/10</u> |
| Brent Grasty, GIS Coordinator | Date |

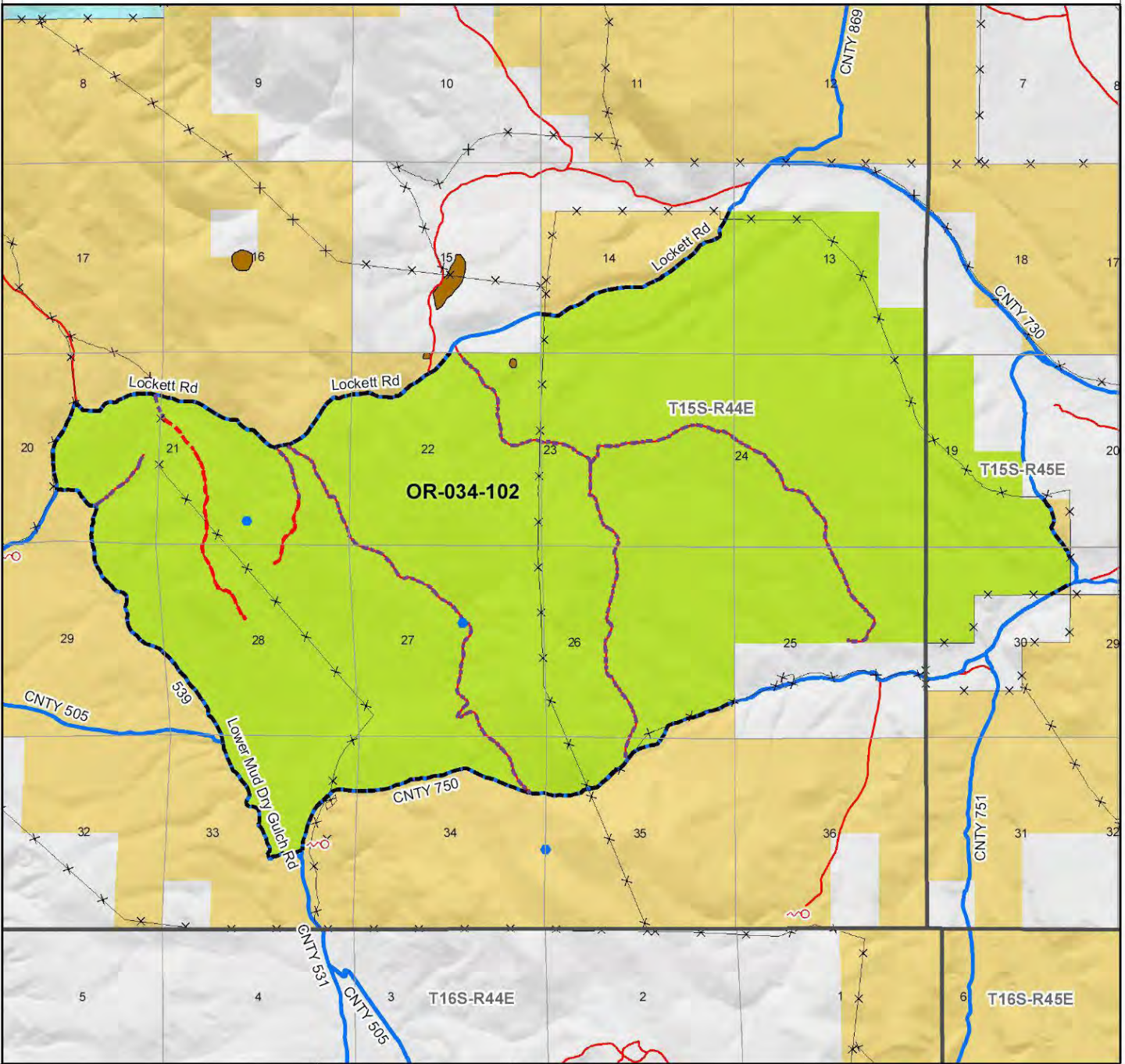
Approved by:

 12/13/10
Pat Ryan, Malheur Resource Area Field Manager Date

This form documents information that constitutes an inventory finding on wilderness characteristics. It does not represent a formal land use allocation or a final agency decision subject to administrative remedies under either 43 CFR parts 4 or 1610.5-2.

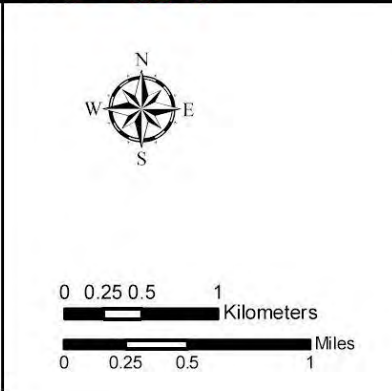
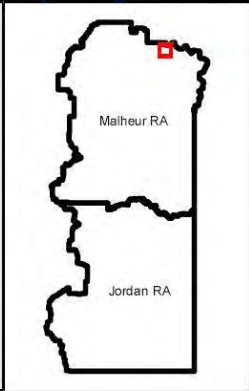
Wilderness Characteristics - Overview

McCarthy Ridge - OR-034-102 - Map 1 of 2



Legend

<ul style="list-style-type: none"> Developed Spring Wildlife Guzzler Earthen Reservoir Pipeline Trough Fence Storage Tank Surface Mining Disturbance Sage Grouse Lek Special Status Plant BLM Wild Char Inventory Unit Wilderness Study Area Mineral Material Site Road/Utility Right-of-Way Major Water Body 	<ul style="list-style-type: none"> Route Types - BLM Determination Boundary Road Motorized Primitive Trail (MPT) Discontinued Use Routes - Outside Wild Char Unit County Major Highway BLM Numbered & Other Routes Land Ownership Bureau of Land Management State Private Other Federal Land
---	--



U.S. DEPARTMENT OF THE INTERIOR
BUREAU OF LAND MANAGEMENT

VALE DISTRICT
June 8, 2010

No warranty is made by the Bureau of Land Management as to the accuracy, reliability, or completeness of these data for individual or aggregate use with other data. Original data were compiled from various sources. This information may not meet National Map Accuracy Standards. This product was developed through digital means and may be updated without notification.

--FINAL--

