

Wilderness Inventory Unit Index of Documents
Lower Bully Creek OR-034-086, 10 total pages

Page 1: Index Cover Sheet

[Page 2: Form 1 – Documentation of BLM Wilderness Inventory: Findings on Record](#)

[Page 5: Form 2 – Documentation of Current Wilderness Inventory Conditions](#)

[Page 8: Form 2 – Summary of Findings and Conclusion](#)

[Page 9: Wilderness Characteristics Overview – Lower Bully Creek OR-034-086 Map 1 of 2](#)

[Page 10: Wilderness Characteristics-Land Treatments-Lower Bully Creek OR-034-086 Map 2 of 2](#)

**Prepared by:
U.S. Department of the Interior
Bureau of Land Management
Vale District Office
100 Oregon Street
Vale, Oregon 97918**



H-6300-1-WILDERNESS INVENTORY MAINTENANCE IN BLM OREGON/WASHINGTON

APPENDIX B – INVENTORY AREA EVALUATION

Evaluation of Current Conditions:

- 1) Document and review the existing BLM wilderness inventory findings on file, if available, regarding the presence or absence of individual wilderness characteristics, using Form 1, below.
- 2) Consider relevant information regarding current conditions available in the office to identify and describe any changes to the existing information (use interdisciplinary (ID) team knowledge, aerial photographs, field observations, maps, etc.), and document your findings on Form 2, below.

When Citizen Information has been submitted regarding wilderness characteristics, document the submitted materials including: date of Submission; Name of District(s) and Field Office(s) Affected; Type of material Submitted (e.g. narrative, map, photo). Evaluate any submitted citizen information regarding the validity of proposed boundaries of the unit(s), the existence of roads and other boundary features, the size of the unit(s), and the presence or absence of wilderness characteristics based on relevant information available in the office (prior BLM inventories, ID team knowledge, aerial photographs, field observations, maps, etc.)

Conduct field reviews as necessary to verify information and to ascertain current conditions. Reach conclusions on current conditions including boundaries, size of areas and presence or absence of wilderness characteristics. Fully explain the basis for each conclusion on form 2, including any critical differences between BLM and citizen information.

Document your findings regarding current conditions for each inventoried area. Describe how the present conditions are similar to, or have changed from, the conditions documented in the original wilderness inventory. Document your findings on Form 2 for each inventory area. Cite to or attach data considered, including photographs, maps, GIS layers, field trip notes, project files, *etc.*

Year: 2010 **Unit Number/Name:** OR-034-086 -- Lower Bully Creek

**FORM 1 -- DOCUMENTATION OF BLM WILDERNESS INVENTORY
FINDINGS ON RECORD**

1. Is there existing BLM wilderness inventory information on all or part of this area?

Yes No (If yes, and if more than one unit is within the area, list the names of those units.):

A.) Inventory Source(s) -- (X) Denotes all applicable BLM Inventory files, printed maps, or published BLM Decision documents with information pertaining to this unit.

Wilderness Inventories

- (X) 1978 – 1980 -- BLM Wilderness Inventory Units 3-16A and 16B of OR-03-02-24 Lower Bully Creek (unpublished BLM documents in case files)
- () April 1979 – *Wilderness -- Proposed Initial Inventory – Roadless Areas and Islands Which Clearly Do Not have Wilderness Characteristics, Oregon and Washington*

Wilderness Decision Documents

- (X) August 1979 – *Wilderness Review – Initial Inventory, Final Decision on Public Lands Obviously Lacking Wilderness Characteristics and Announcement of Public Lands to be Intensively Inventoried for Wilderness Characteristics, Oregon and Washington* (green document)
- () October 1979 – *Wilderness Review – Intensive Inventory - Oregon, Proposed Decision on the Intensive Wilderness Inventory of Selected Areas* (grey document).
- (X) March 1980 – *Wilderness Review – Intensive Inventory; Final Decisions on 30 Selected Units in Southeast Oregon and Proposed Decisions on Other Intensively Inventoried Units in Oregon and Washington* (orange document)
- (X) November 1980 - *Wilderness Inventory – Oregon and Washington, Final Intensive Inventory Decisions* (brown document)
- () November 1981 *Stateline Intensive Wilderness Inventory Final Decision, Oregon, Idaho, Nevada, Utah* (tan document).

B.) Inventory Unit Name(s)/Number(s)

BLM 3-16A and 16B of OR-03-02-24 Lower Bully Creek

C.) Map Name(s)/Number(s)

- Final Decision – Initial Wilderness Inventory Map, August 1979, Oregon
- Proposed Decision -- Intensive Wilderness Inventory of Selected Areas Map, October 1979, Oregon
- Intensive Wilderness Inventory Map, March 1980, Oregon
- Intensive Wilderness Inventory --Final Decisions Map, November 1980, Oregon.
- November, 1981 *Stateline Intensive Wilderness Inventory Final Decision, Oregon, Idaho, Nevada, Utah* (tan document).

D.) BLM District(s)/Field Office(s)

Vale District Office/ Malheur Field Office

2. BLM Inventory Findings on Record

(Existing inventory information regarding wilderness characteristics (if more than one BLM inventory unit is associated with the area, list each unit and answer each question individually for each inventory unit):

Inventory Source: See above.

Unit#/ Name	Size (historic acres)	Natural Condition? Y/N	Outstanding Solitude? Y/N	Outstanding Primitive & Unconfined Recreation? Y/N	Supplemental Values? Y/N
3-16A of OR-03-02-24 Lower Bully Creek	18,900*	N	N	N	N
3-16B of OR-03-02-24 Lower Bully Creek	160	**	**	**	**
TOTAL	19,060				

* -- The original 3-16 unit had 19,060 acres, but a road identified in the west side of the unit during the intensive inventory divided the unit into two subunits (16A – 18,900 acres -- and 16B – 160 acres). Presently, both subunits affect the current unit OR-034-085.

** -- These criteria were not addressed, since the area did not meet any size criteria.

H-6300-1-WILDERNESS INVENTORY MAINTENANCE IN BLM OREGON/WASHINGTON

APPENDIX B – INVENTORY AREA EVALUATION

Evaluation of Current Conditions:

- 1) Document and review the existing BLM wilderness inventory findings on file, if available, regarding the presence or absence of individual wilderness characteristics, using Form 1, below.
- 2) Consider relevant information regarding current conditions available in the office to identify and describe any changes to the existing information (use interdisciplinary (ID) team knowledge, aerial photographs, field observations, maps, etc.), and document your findings on Form 2, below.

When Citizen Information has been submitted regarding wilderness characteristics, document the submitted materials including: date of Submission; Name of District(s) and Field Office(s) Affected; Type of material Submitted (e.g. narrative, map, photo). Evaluate any submitted citizen information regarding the validity of proposed boundaries of the unit(s), the existence of roads and other boundary features, the size of the unit(s), and the presence or absence of wilderness characteristics based on relevant information available in the office (prior BLM inventories, ID team knowledge, aerial photographs, field observations, maps, etc.)

Conduct field reviews as necessary to verify information and to ascertain current conditions. Reach conclusions on current conditions including boundaries, size of areas and presence or absence of wilderness characteristics. Fully explain the basis for each conclusion on form 2, including any critical differences between BLM and citizen information.

Document your findings regarding current conditions for each inventoried area. Describe how the present conditions are similar to, or have changed from, the conditions documented in the original wilderness inventory. Document your findings on Form 2 for each inventory area. Cite to or attach data considered, including photographs, maps, GIS layers, field trip notes, project files, *etc.*

FORM 2 -- DOCUMENTATION OF CURRENT WILDERNESS INVENTORY CONDITIONS

Unit Number/Name: OR-034-086 — Lower Bully Creek

Description of Current Conditions: [Include land ownership, location, topography, vegetation features and summary of major human uses/activities.]

1. Is the unit of sufficient size?

Yes X No

Description: Refer to this inventory unit's associated Map 1 for its location. The unit has 16,001 acre of public land. The unit's boundaries are about the same as the late 1970's wilderness characteristics inventory. The difference in acreage is apparently due to a combination of (A) a land exchange since the late 1970's resulting in 640 additional acres being contiguous to the unit along its west boundary; (B) an apparent miscalculation in size of the original unit; and (C) improved methods since the late 1970's to more accurately measure an area's size.

Boundaries of the unit include the BLM 7360-00 road, private land and another road traversing public land on its west side; a road crossing public land on its north side; private lands and road crossing public land on its east side; and private land on its south side. The route identified in the late 1970's as a road which separated the then subunit 16A from subunit 16B (see Form 1 of this OR-034-086 inventory unit) has changed status to a motorized primitive trail (MPT) because no known mechanical maintenance has been performed and BLM presently does not intend to authorize or conduct such maintenance on the route into the future. The boundary roads of OR-034-086 are mechanically maintained as needed to allow for relatively regular and continuous use.

2. Is the unit in a natural condition?

Yes No X N/A

Description: The unit consists of a high plateau and rolling hills. The most pronounced topographic relief is in the northern area of the unit. Elevations range from about 2,600 to 3,660 feet. The drainages are shallow and drain mainly to the south-southeast. Shallow outcrops of rimrock exist on some of the drainages. Vegetation consists primarily of sagebrush and non-native annual grasses.

Refer to this inventory unit's associated Map 1 and Map 2 for human imprints. There are 13.4 miles of rangeland fence including one small enclosure, 21.1 miles of 20 motorized primitive trails (MPTs), and 3.1 miles of an irrigation canal. There remains no visual contrast from a 2000 disc-drilled native and non-native grasses seeding or from an 2003 aerial sagebrush seeding. For the size of the unit and given the distribution, numbers and often the close proximity of various developments to each other, overall the unit does not

appear to the average visitor to be affected primarily by the forces of nature but rather is substantially affected by the works of mankind. This is the same conclusion as the late 1970's BLM inventory of the same area.

3. Does the unit have outstanding opportunities for solitude?

Yes _____ No X N/A _____

Description: The unit's south half is a narrow extension of public land ranging from about 1 to 2 miles in width by about 4 miles in length; likewise, a portion of the unit's east sector is a largely isolated tract of public land which is connected with the rest of the unit by a narrow one square mile parcel of public land. The unit's highly irregular shape, an absence of vegetation screening, and insufficient topographic screening precludes the inventory unit from possessing outstanding opportunities for solitude. This is the same conclusion as the late 1970's BLM inventory of the same area.

4. Does the unit have outstanding opportunities for primitive and unconfined recreation?

Yes _____ No X N/A _____

Description: Hunting for common game species (primarily deer and chukar) occurs in the unit. Other opportunities include hiking, horseback riding and general sightseeing. However, there are no special or unique features or activities that more so attracts visitors to the inventory unit. Individually or in combinations the unit does not possess outstanding opportunities for primitive and unconfined recreation. This is the same conclusion as the late 1970's BLM inventory of the same area.

5. Does the unit have supplemental values?

Yes X No _____ N/A _____

Description: A site of *Caulanthus pilosus*, hairy wild cabbage, a BLM special status plant species, is documented.

Summary of Findings and Conclusion

Unit Name and Number: OR-034-086 — Lower Bully Creek

Summary Results of Analysis:

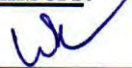

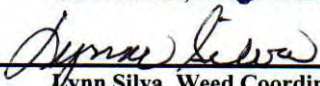
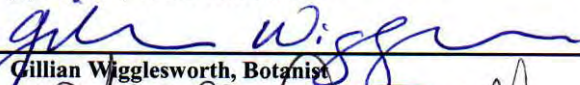
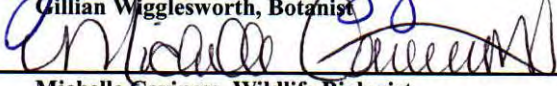
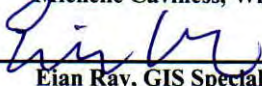
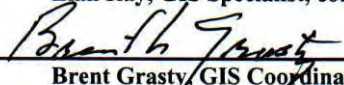
- 1. Does the area meet any of the size requirements? Yes No
- 2. Does the area appear to be natural? Yes No
- 3. Does the area offer outstanding opportunities for solitude or a primitive and unconfined type of recreation? Yes No NA
- 4. Does the area have supplemental values? Yes No NA

Conclusion -- check one:

- The area, or a portion of the area, has wilderness character.
- The area does not have wilderness character.

Prepared by: 
Robert Alward, Wilderness Planner, contractor

Team Members:

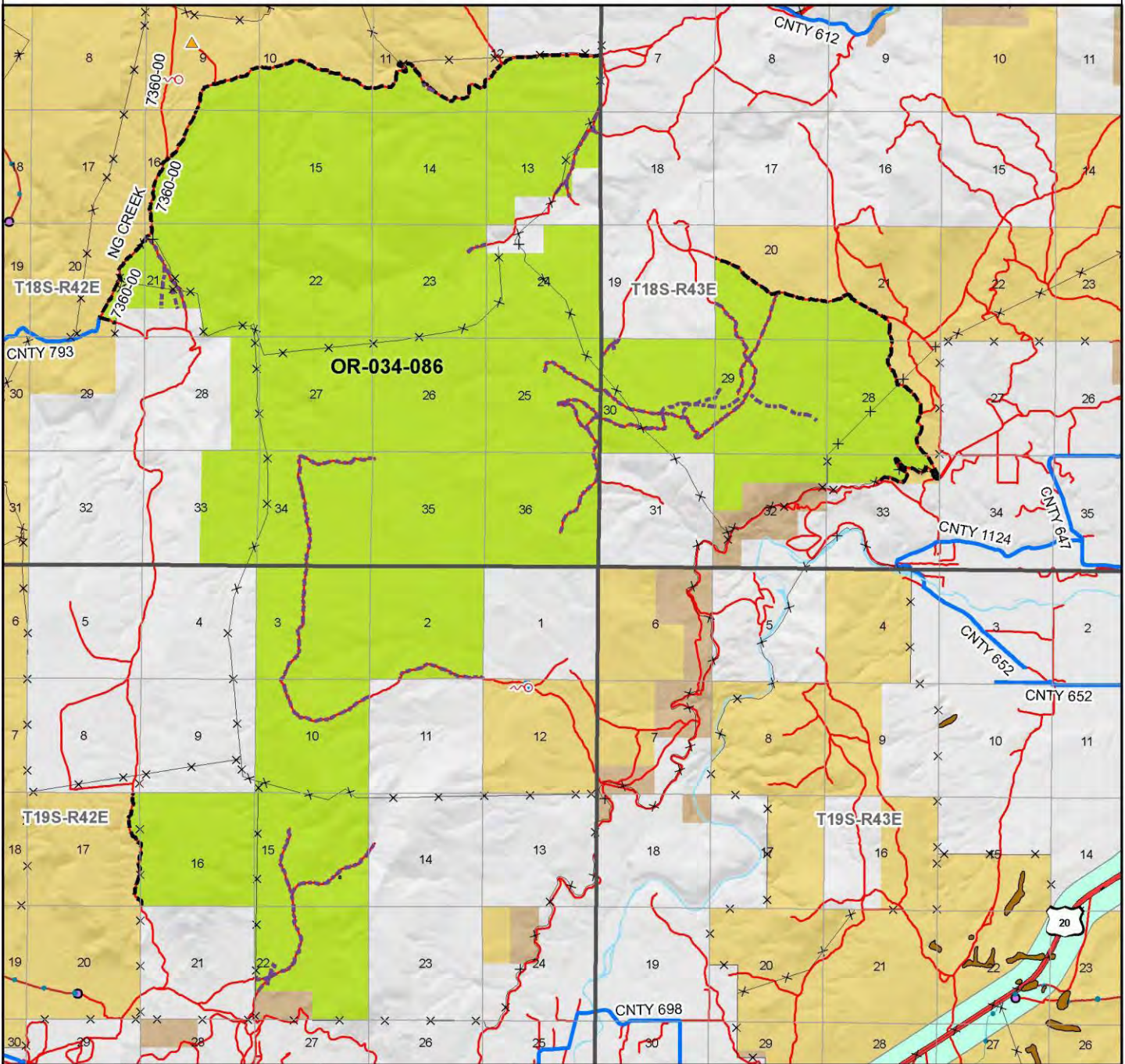
<u></u>	<u>12/7/10</u>
Bill Lutjens, Rangeland Management Specialist	Date
<u></u>	<u>12/6/10</u>
Dan Thomas, Range Technician	Date
<u></u>	<u>11-16-2010</u>
Lynn Silva, Weed Coordinator	Date
<u></u>	<u>12/6/10</u>
Gillian Wigglesworth, Botanist	Date
<u></u>	<u>12/16/10</u>
Michelle Caviness, Wildlife Biologist	Date
<u></u>	<u>12-16-10</u>
Ejan Ray, GIS Specialist, contractor	Date
<u></u>	<u>12/9/10</u>
Brent Grasty, GIS Coordinator	Date

Approved by:  12/13/10
Pat Ryan, Malheur Resource Area Field Manager Date

This form documents information that constitutes an inventory finding on wilderness characteristics. It does not represent a formal land use allocation or a final agency decision subject to administrative remedies under either 43 CFR parts 4 or 1610.5-2.

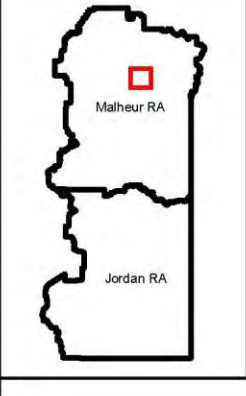
Wilderness Characteristics - Overview

Lower Bully Creek - OR-034-086 - Map 1 of 2



Legend

- | | |
|---|--|
| <ul style="list-style-type: none"> Developed Spring Wildlife Guzzler Earthen Reservoir Pipeline Trough Fence Abandoned Canal Storage Tank Surface Mining Disturbance Sage Grouse Lek Special Status Plant BLM Wild Char Inventory Unit Wilderness Study Area Mineral Material Site Road/Utility Right-of-Way Major Water Body | <ul style="list-style-type: none"> Route Types - BLM Determination Boundary Road Motorized Primitive Trail (MPT) Discontinued Use Routes - Outside Wild Char Unit County Major Highway BLM Numbered & Other Routes Land Ownership Bureau of Land Management State Private Other Federal Land |
|---|--|



U.S. DEPARTMENT OF THE INTERIOR
BUREAU OF LAND MANAGEMENT



VALE DISTRICT
July 14, 2010

No warranty is made by the Bureau of Land Management as to the accuracy, reliability, or completeness of these data for individual or aggregate use with other data. Original data were compiled from various sources. This information may not meet National Map Accuracy Standards. This product was developed through digital means and may be updated without notification.

--FINAL--

