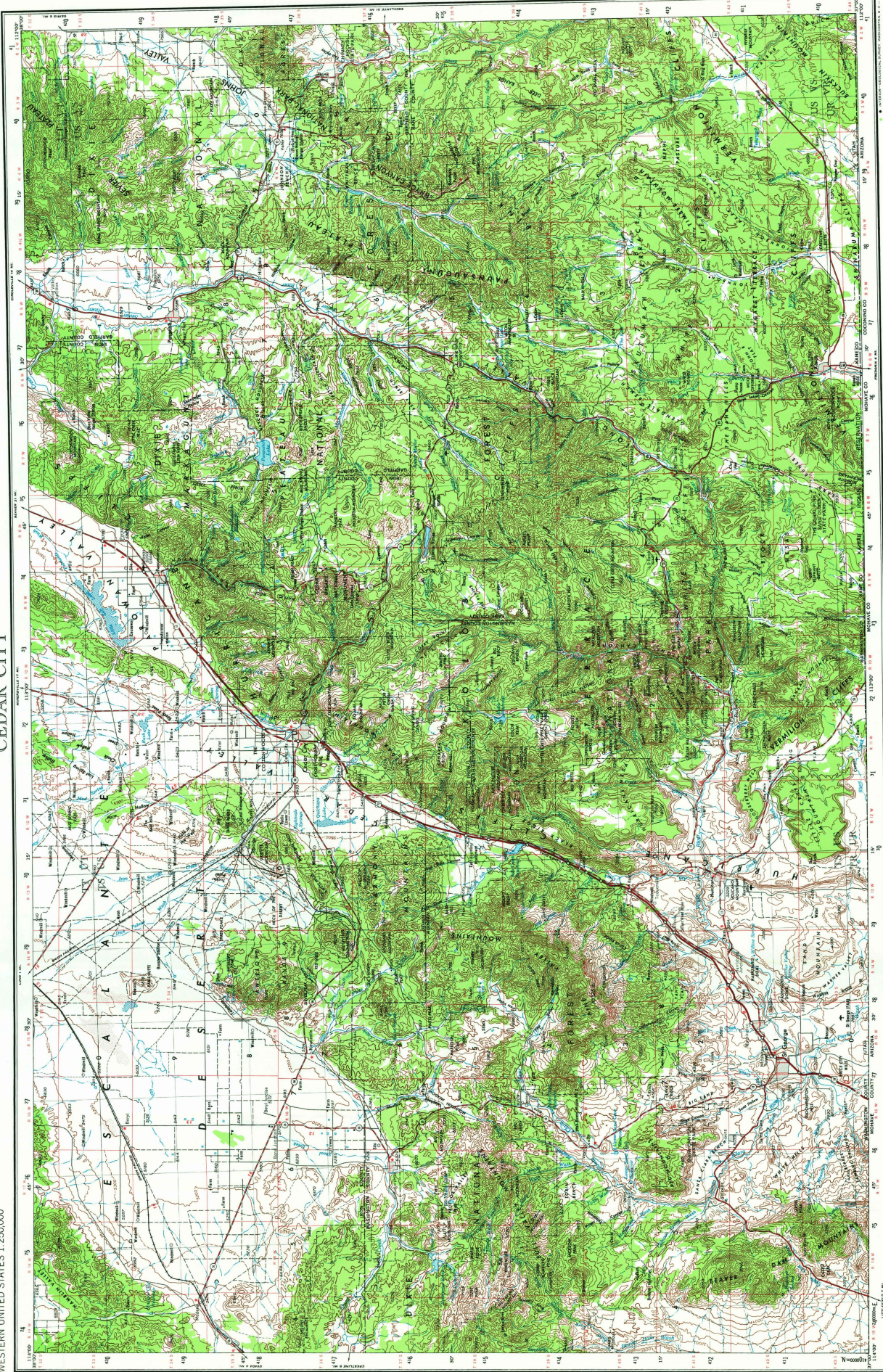


RDI APPLICATION
MANGANESE ROAD
WASHINGTON COUNTY, UTAH

ATTACHMENT 4
Historic Cedar City Topo
1953 Revised 1971-1973

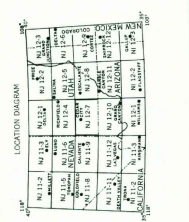


SECTIONAL TOWNSHIP

6	5	4	3	2	1
7	8	9	10	11	12
13	14	15	16	17	18
19	20	21	22	23	24
25	26	27	28	29	30
31	32	33	34	35	36

LOCATION DIAGRAM

14°	13°	12°	11°	10°	9°	8°	7°	6°	5°	4°	3°	2°	1°
114.5	114.0	113.5	113.0	112.5	112.0	111.5	111.0	110.5	110.0	109.5	109.0	108.5	108.0
114.5	114.0	113.5	113.0	112.5	112.0	111.5	111.0	110.5	110.0	109.5	109.0	108.5	108.0
114.5	114.0	113.5	113.0	112.5	112.0	111.5	111.0	110.5	110.0	109.5	109.0	108.5	108.0
114.5	114.0	113.5	113.0	112.5	112.0	111.5	111.0	110.5	110.0	109.5	109.0	108.5	108.0



TRANSVERSE MERCATOR PROJECTION
 WITH SUPPLEMENTARY CONTOURS AT 100 FOOT INTERVALS
 MAJOR NUMBERS INCLUDE THE GRID MERIDIAN, TRANSVERSE MERIDIAN AND U.S. CENTRE OF GRAVITY FOR 1972 WITH INTERVALS FROM THE CENTRE OF GRAVITY

FOR SALE BY U.S. GEOLOGICAL SURVEY, DENVER, COLORADO 80225, OR WASHINGTON, D.C. 20544

LEGEND

POPULATED AREAS
 Over 100,000: [Symbol] Major cities
 25,000 to 100,000: [Symbol] Medium cities
 5,000 to 25,000: [Symbol] Small cities
 1,000 to 5,000: [Symbol] Villages

ROADS
 Interstate: [Symbol] Double red lines
 U.S. Highway: [Symbol] Single red line
 State Highway: [Symbol] Single yellow line
 County Road: [Symbol] Single black line
 Private Road: [Symbol] Dashed black line

RAILROADS
 Passenger: [Symbol] Solid black line
 Freight: [Symbol] Dashed black line
 Electric: [Symbol] Black line with cross-ticks

Water features
 Lake: [Symbol] Blue area
 Reservoir: [Symbol] Blue area with wavy lines
 Stream: [Symbol] Blue line
 Canal: [Symbol] Blue line with cross-ticks

Other features
 Contour: [Symbol] Brown line
 Spot height: [Symbol] Brown number
 Boundary: [Symbol] Dashed black line
 Monument: [Symbol] Black circle with cross

LOS ANGELES COMMISSION

UNIVERSITY OF UTAH

CEAR CITY, UTAH

REVISED 1971

U.S. GEOLOGICAL SURVEY
 DENVER, COLORADO 80225