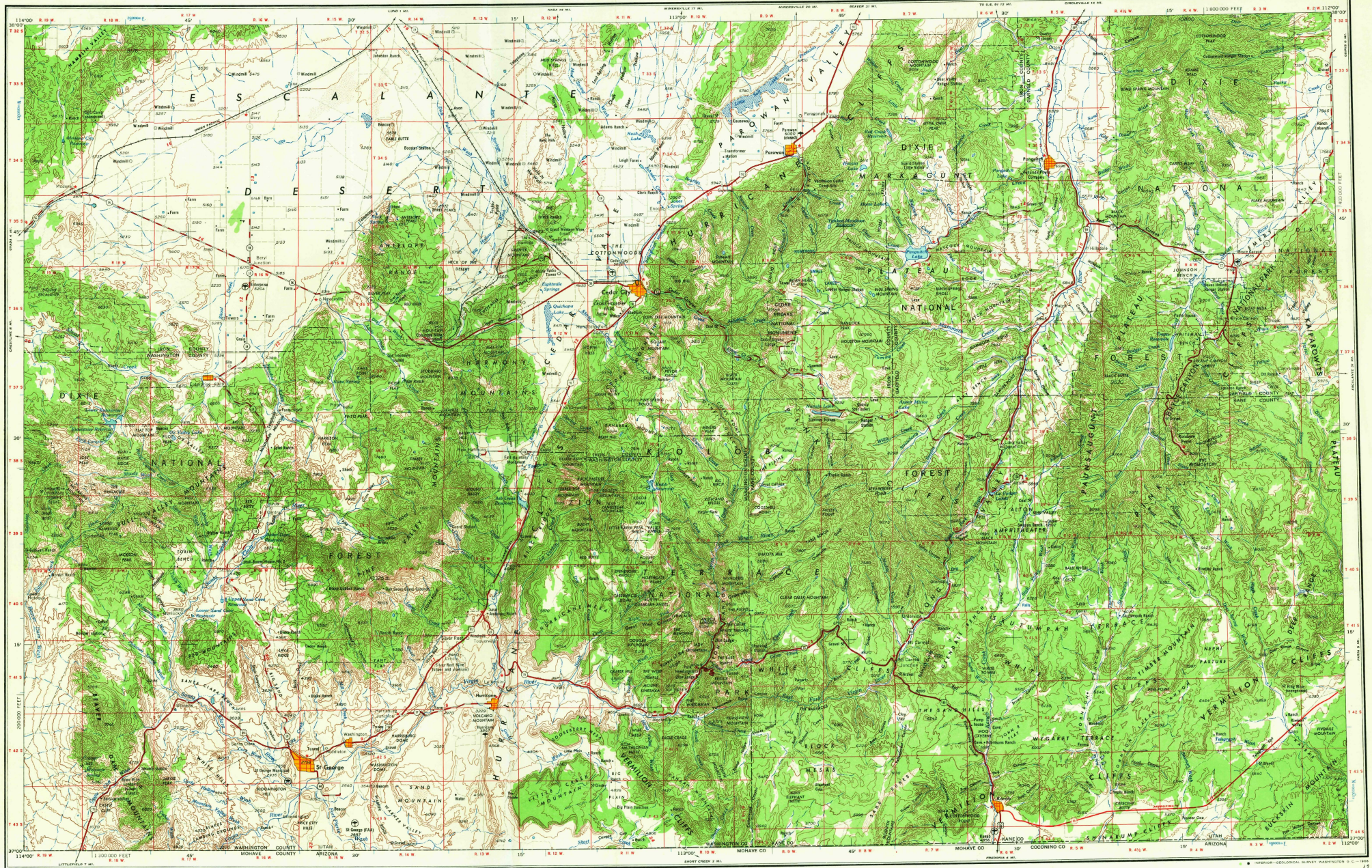


RDI APPLICATION  
MANGANESE ROAD  
WASHINGTON COUNTY, UTAH

ATTACHMENT 3  
Historic Cedar City Topo  
1953 Revised 1961



Prepared by the Army Map Service (FSGE), Corps of Engineers, U.S. Army, Washington, D.C. Compiled in 1953 by photogrammetric methods and from USGS quadrangles, 1:24,000, 1:25,000 and 1:62,500, 1931-52. Photometric detail revised by photogrammetric methods. Horizontal and vertical control by USGS, LOS ANGELES, UICB and USGLO. Photographic field annotated 1953. Limited revision by U.S. Geological Survey 1961.

**LEGEND**

Figures in red denote approximate distances in miles between stars

**POPULATED PLACES**

Over 100,000: **LOS ANGELES**  
 25,000 to 100,000: **OMAHA**  
 1,000 to 25,000: **GALVESTON**

**Ground Control**

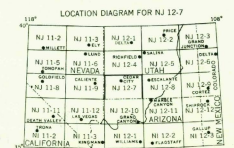
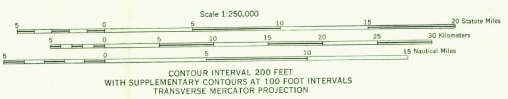
**RAILROADS**

**ROADS**

**Water**

**Landmarks: School; Church; Other**

**Other**



RELIABILITY DIAGRAM

USGS HISTORICAL FILE TOPOGRAPHIC DIVISION

TOWNSHIP OR RANGE LINE

LAND GRANT

U.S. FILE BODY TOPOGRAPHIC DIVISION

SECTIONIZED TOWNSHIP

6	5	4	3	2	1
7	8	9	10	11	12
13	14	15	16	17	18
19	20	21	22	23	24
25	26	27	28	29	30
31	32	33	34	35	36

CEDAR CITY, UTAH  
 1953  
 Limited Revision 1961