

Wilderness Inventory Unit Index of Documents  
**Juniper Creek OR-034-047, 10 total pages**

Page 1: Index Cover Sheet

[Page 2: Form 1 – Documentation of BLM Wilderness Inventory: Findings on Record](#)

[Page 5: Form 2 – Documentation of Current Wilderness Inventory Conditions](#)

[Page 8: Form 2 – Summary of Findings and Conclusion](#)

[Page 9: Wilderness Characteristics Overview – Juniper Creek OR-034-047 Map 1 of 2](#)

[Page 10: Wilderness Characteristics-Land Treatments-Juniper Creek OR-034-047 Map 2 of 2](#)

**Prepared by:**  
**U.S. Department of the Interior**  
**Bureau of Land Management**  
**Vale District Office**  
**100 Oregon Street**  
**Vale, Oregon 97918**



## **H-6300-1-WILDERNESS INVENTORY MAINTENANCE IN BLM OREGON/WASHINGTON**

### **APPENDIX B – INVENTORY AREA EVALUATION**

#### **Evaluation of Current Conditions:**

- 1) Document and review the existing BLM wilderness inventory findings on file, if available, regarding the presence or absence of individual wilderness characteristics, using Form 1, below.
- 2) Consider relevant information regarding current conditions available in the office to identify and describe any changes to the existing information (use interdisciplinary (ID) team knowledge, aerial photographs, field observations, maps, etc.), and document your findings on Form 2, below.

When Citizen Information has been submitted regarding wilderness characteristics, document the submitted materials including: date of Submission; Name of District(s) and Field Office(s) Affected; Type of material Submitted (e.g. narrative, map, photo). Evaluate any submitted citizen information regarding the validity of proposed boundaries of the unit(s), the existence of roads and other boundary features, the size of the unit(s), and the presence or absence of wilderness characteristics based on relevant information available in the office (prior BLM inventories, ID team knowledge, aerial photographs, field observations, maps, etc.)

Conduct field reviews as necessary to verify information and to ascertain current conditions. Reach conclusions on current conditions including boundaries, size of areas and presence or absence of wilderness characteristics. Fully explain the basis for each conclusion on form 2, including any critical differences between BLM and citizen information.

Document your findings regarding current conditions for each inventoried area. Describe how the present conditions are similar to, or have changed from, the conditions documented in the original wilderness inventory. Document your findings on Form 2 for each inventory area. Cite to or attach data considered, including photographs, maps, GIS layers, field trip notes, project files, *etc.*

**Year:** 2009      **Unit Number/Name:** OR-034-047 --- Juniper Creek

**FORM 1 -- DOCUMENTATION OF BLM WILDERNESS INVENTORY FINDINGS ON RECORD**

**1. Is there existing BLM wilderness inventory information on all or part of this area?**

Yes  No  (If yes, and if more than one unit is within the area, list the names of those units.):

**A.) Inventory Source(s) -- (X) Denotes all applicable BLM Inventory files, printed maps, or published BLM Decision documents with information pertaining to this unit.**

**Wilderness Inventories**

- (X) 1978 – BLM Wilderness Inventory Unit OR-03-04-22, Juniper Creek 3-61; and OR-03-03-13 Wildcat Creek 3-81 (unpublished BLM documents in case files)
- (X) April 1979 – *Wilderness -- Proposed Initial Inventory – Roadless Areas and Islands Which Clearly Do Not have Wilderness Characteristics, Oregon and Washington*

**Wilderness Decision Documents**

- (X) August 1979 – *Wilderness Review – Initial Inventory, Final Decision on Public Lands Obviously Lacking Wilderness Characteristics and Announcement of Public Lands to be Intensively Inventoried for Wilderness Characteristics, Oregon and Washington* (green document)
- ( ) October 1979 – *Wilderness Review – Intensive Inventory - Oregon, Proposed Decision on the Intensive Wilderness Inventory of Selected Areas* (grey document).
- ( ) March 1980 – *Wilderness Review – Intensive Inventory; Final Decisions on 30 Selected Units in Southeast Oregon and Proposed Decisions on Other Intensively Inventoried Units in Oregon and Washington* (orange document)
- ( ) November 1980 - *Wilderness Inventory – Oregon and Washington, Final Intensive Inventory Decisions* (brown document)
- ( ) November 1981 *Stateline Intensive Wilderness Inventory Final Decision, Oregon, Idaho, Nevada, Utah* (tan document).

**B.) Inventory Unit Name(s)/Number(s)**

BLM 3-61 of OR-03-04-22 Juniper Creek; and 3-81 of OR-03-03-13 Wildcat Creek

**C.) Map Name(s)/Number(s)**

- Final Decision – Initial Wilderness Inventory Map, August 1979, Oregon
- Proposed Decision -- Intensive Wilderness Inventory of Selected Areas Map, October 1979, Oregon
- Intensive Wilderness Inventory Map, March 1980, Oregon
- Intensive Wilderness Inventory --Final Decisions Map, November 1980, Oregon.
- November, 1981 *Stateline Intensive Wilderness Inventory Final Decision, Oregon, Idaho, Nevada, Utah* (tan document).

**D.) BLM District(s)/Field Office(s)**

Vale District Office/ Malheur Field Office

**2. BLM Inventory Findings on Record**

(Existing inventory information regarding wilderness characteristics (if more than one BLM inventory unit is associated with the area, list each unit and answer each question individually for each inventory unit):

**Inventory Source:** See above.

Unit#/ Name	Size (historic acres)	Natural Condition? Y/N	Outstanding Solitude? Y/N	Outstanding Primitive & Unconfined Recreation? Y/N	Supplemental Values? Y/N
3-61 of OR-03-04-22 Juniper Creek	19,680	N	*	*	*
3-81 of OR-03-03-13 Wildcat Creek	18,720	**	**	**	**
<b>TOTAL</b>	38,400				

\* -- These criteria were not specifically addressed in the inventory of this unit.

\*\* -- An inventory folder for this unit was found, but with nearly no information in it. It refers reader to P.P. & L. 500kV transmission line proposal’s decision document, which cannot be found. The statewide decision map of the August 1979 document, *Wilderness Review – Initial Inventory, Final Decision on Public Lands Obviously Lacking Wilderness Characteristics and Announcement of Public Lands to be Intensively Inventoried for Wilderness Characteristics, Oregon and Washington*, identifies the unit as previously not meeting wilderness characteristics, thus not subject to further review. No other historic BLM wilderness inventory decision documents address this unit. Part of the 2007 unit includes some of this historic unit.

## **H-6300-1-WILDERNESS INVENTORY MAINTENANCE IN BLM OREGON/WASHINGTON**

### **APPENDIX B – INVENTORY AREA EVALUATION**

#### **Evaluation of Current Conditions:**

- 1) Document and review the existing BLM wilderness inventory findings on file, if available, regarding the presence or absence of individual wilderness characteristics, using Form 1, below.
- 2) Consider relevant information regarding current conditions available in the office to identify and describe any changes to the existing information (use interdisciplinary (ID) team knowledge, aerial photographs, field observations, maps, etc.), and document your findings on Form 2, below.

When Citizen Information has been submitted regarding wilderness characteristics, document the submitted materials including: date of Submission; Name of District(s) and Field Office(s) Affected; Type of material Submitted (e.g. narrative, map, photo). Evaluate any submitted citizen information regarding the validity of proposed boundaries of the unit(s), the existence of roads and other boundary features, the size of the unit(s), and the presence or absence of wilderness characteristics based on relevant information available in the office (prior BLM inventories, ID team knowledge, aerial photographs, field observations, maps, etc.)

Conduct field reviews as necessary to verify information and to ascertain current conditions. Reach conclusions on current conditions including boundaries, size of areas and presence or absence of wilderness characteristics. Fully explain the basis for each conclusion on form 2, including any critical differences between BLM and citizen information.

Document your findings regarding current conditions for each inventoried area. Describe how the present conditions are similar to, or have changed from, the conditions documented in the original wilderness inventory. Document your findings on Form 2 for each inventory area. Cite to or attach data considered, including photographs, maps, GIS layers, field trip notes, project files, *etc.*

## **FORM 2 -- DOCUMENTATION OF CURRENT WILDERNESS INVENTORY CONDITIONS**

**Unit Number/Name:** OR-034-047 -- Juniper Creek

**Description of Current Conditions:** [Include land ownership, location, topography, vegetation features and summary of major human uses/activities.]

### **1. Is the unit of sufficient size?**

Yes   X   No \_\_\_\_\_

**Description:** Refer to the inventory unit's associated Map 1 for its location. The boundary of the 38,045 acre unit is largely a result of two 1970's historic units combining due to changes in vehicle route conditions which has changed their common boundary vehicle route from a road to a motorized primitive trail (MPT). The two historic units are 3-61 of OR-03-04-22 (Juniper Creek) and 3-81 of OR-03-03-13 (Wildcat Creek). The unit is bounded by BLM road 7322-0-00 on its north (east of the State land block), by County Roads 541, 585 and 588, various other roads on public land, and by non-BLM lands. The natural-surfaced roads are in reasonably good passable condition when not water saturated, receiving a measure of mechanical maintenance as needed to keep them passable for regular and continuous use. Four private land inholdings totaling 920 acres also are also part of the unit's boundary.

### **2. Is the unit in a natural condition?**

Yes   X   No \_\_\_\_\_ N/A \_\_\_\_\_

**Description:** The unit is characterized by predominately rolling hills with the majority of their associated multiple drainages flowing toward Dry Creek, located just north of the unit. Elevations range from approximately 3,950 feet near its east boundary to 4,825 feet amongst hills in the central portion of the unit. Vegetation consists predominately of sagebrush and both native and non-native grass species.

Refer to this unit's associated Maps 1 and 2 for human imprints. They include approximately 30.9 miles of rangeland fence, 16 earthen reservoirs, 2 fenced enclosures, an earthen airstrip near Skull Springs, and 31.1 miles of 19 motorized primitive trails (MPT). Five of these MTPs traverse across the entire unit and are widely dispersed within the unit; two of these five are affiliated with two of the private inholdings. Additionally, there are 9.1 miles of 6 segments of abandoned vehicle routes which currently are no longer or nominally visually distinguishable to the average visitor of the unit. Presently, to the average visitor, each of three land treatment projects completed between 1976 and appear visually natural. There remains remnant visual surface disturbance of a small back-hoed prospect pit for mining of granite nodules in section 8 of T. 24S, R. 41E (an associated reference map and 2 photos are located in this unit's hard copy file folder).

The existing visually apparent human imprints are distributed widely throughout the unit. Although some of the MPTs dissect the unit, the dissected areas appear to be substantially natural and affected primarily by the forces of nature, individually and collectively. Noting that a unit's configuration cannot be a contributing factor when evaluating a unit's natural condition, the size of the unit relative to the types and extent of its human imprints, their locations and their wide distribution within the unit results in the unit being affected primarily by the forces of nature with imprints of man's work substantially unnoticeable throughout the area as a whole.

**3. Does the unit have outstanding opportunities for solitude?**

Yes  No  N/A

**Description:** Insufficient densities and/or size of vegetation does not provide adequate screening for outstanding opportunities for solitude. The size, location and orientation of two private inholdings located in the western quarter of the unit, combined with the resultant narrow configuration of the western-most approximate quarter, precludes outstanding opportunities for solitude within that portion of the unit. However, even with the remainder of the unit possessing only low profiled topographic relief and without steeply incised drainages, the size of it in combination with its configuration and continuous characteristic of undulating terrain does provide for outstanding opportunities for solitude.

**4. Does the unit have outstanding opportunities for primitive and unconfined recreation?**

Yes  No  N/A

**Description:** Dispersed recreation activities include hiking, backpacking, hunting of common game species (primarily deer, chukar and antelope), horseback riding, photography and sightseeing. Individually or collectively, these activities are not outstanding opportunities to experience as primitive and unconfined recreation. The unit does not possess unique or unusual features or attractions for primitive and unconfined recreational pursuits.

**5. Does the unit have supplemental values?**

Yes  No  N/A

**Description:** There are isolated sites of two BLM special status plant species: barren milkvetch and Malheur prince's plume. A BLM special status animal species, Columbia spotted frog, is located in Dry Creek in the northwestern sector of this unit.

**Summary of Findings and Conclusion**

Unit Name and Number: OR-034-047 --- Juniper Creek

**Summary Results of Analysis:**

- 1. Does the area meet any of the size requirements?  Yes  No
- 2. Does the area appear to be natural?  Yes  No
- 3. Does the area offer outstanding opportunities for solitude or a primitive and unconfined type of recreation?  Yes  No  NA
- 4. Does the area have supplemental values?  Yes  No  NA

**Conclusion -- check one:**

- The area, or a portion of the area, has wilderness character.
- The area does not have wilderness character.

**Prepared by:**   
 Robert Alward, Wilderness Planner contractor

**Team Members:**

<u></u>	<u>4-13-2009</u>
Steve Christensen, Rangeland Management Specialist	Date
<u></u>	<u>4/13/09</u>
Shaney Rocketteller, Soil Scientist	Date
<u></u>	<u>04/13/2009</u>
Jon Westfall, Geologist	Date
<u></u>	<u>4/13/09</u>
Brent Grasty, GIS Coordinator	Date

(NOTE: Prior to her July, 2008 retirement, Botanist Jean Finley had reviewed an earlier draft of this unit.)

**Approved by:**

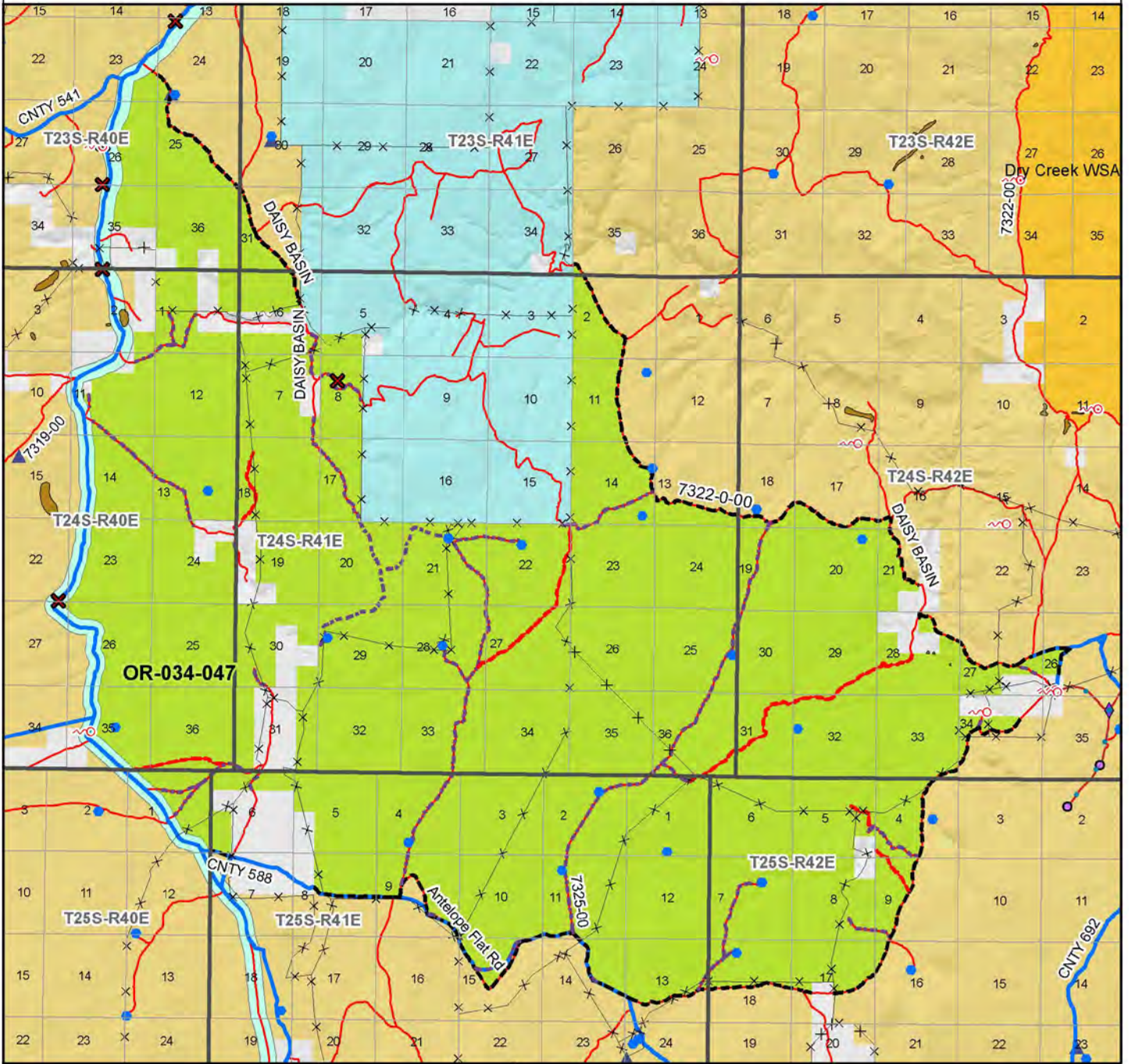
 5/9/10  
 Pat Ryan, Malheur Resource Area Field Manager Date

*This form documents information that constitutes an inventory finding on wilderness characteristics. It does not represent a formal land use allocation or a final agency decision subject to administrative remedies under either 43 CFR parts 4 or 1610.5-2.*



# Wilderness Characteristics - Overview

## Juniper Creek - OR-034-047 - Map 1 of 2



**Legend**

Developed Spring	Boundary Road
Wildlife Guzzler	Motorized Primitive Trail (MPT)
Earthfill Reservoir	Discontinued Use
Pipeline	<b>Routes - Outside Wild Char Unit</b>
Trough	County
Fence	Major Highway
Storage Tank	BLM Numbered & Other Routes
Surface Mining Disturbance	<b>Land Ownership</b>
Sage Grouse Lek	Bureau of Land Management
Special Status Plant	State
BLM Wild Char Inventory Unit	Private
Wilderness Study Area	Other Federal Land
Mineral Material Site	
Road/Utility Right-of-Way	
Major Water Body	



N  
W E  
S

0 0.5 1 2  
Kilometers

0 0.5 1 2  
Miles

**U.S. DEPARTMENT OF THE INTERIOR**  
BUREAU OF LAND MANAGEMENT

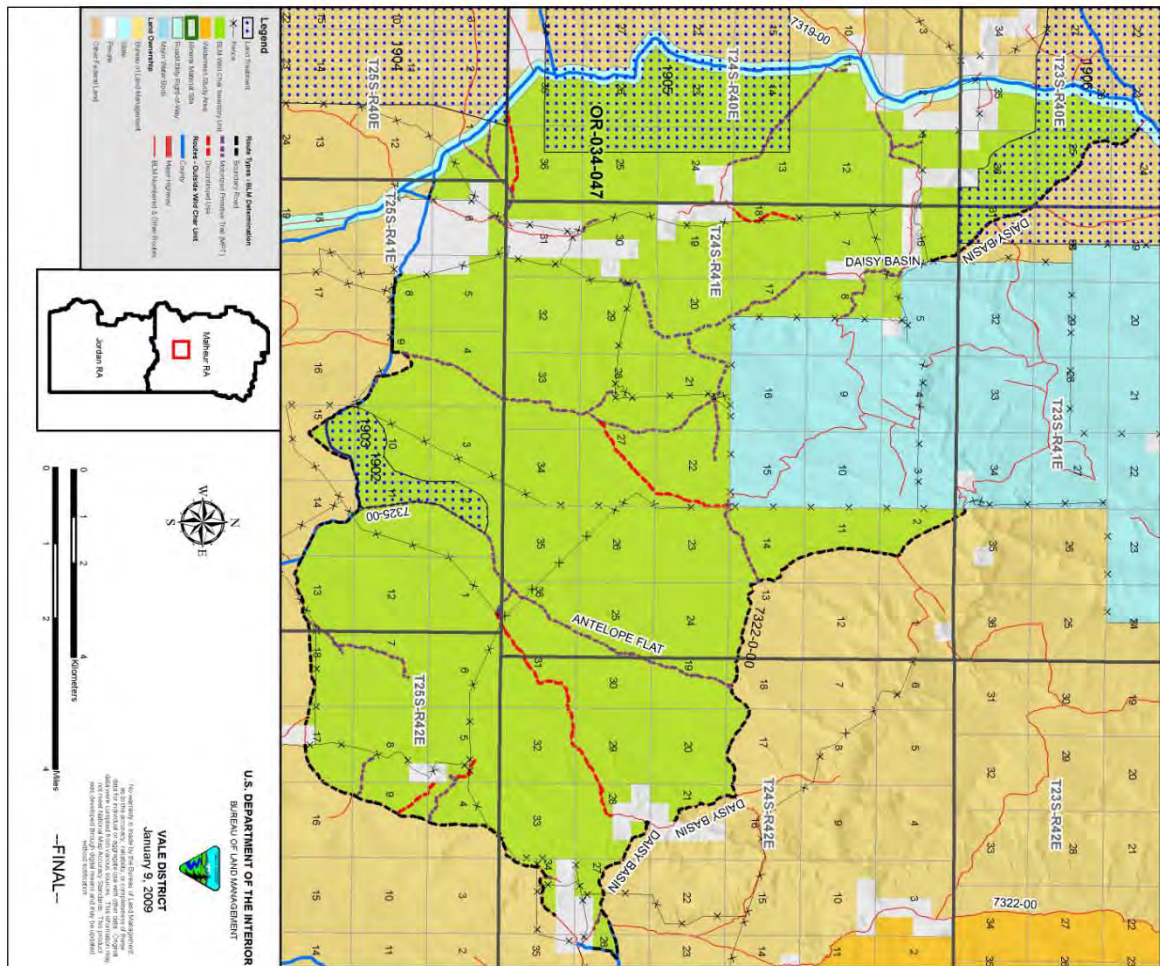
**VALE DISTRICT**  
January 9, 2009

No warranty is made by the Bureau of Land Management as to the accuracy, reliability, or completeness of these data for individual or aggregate use with other data. Original data were compiled from various sources. This information may not meet National Map Accuracy Standards. This product was developed through digital means and may be updated without notification.

**--FINAL--**



**Wilderness Characteristics - Land Treatments**  
**Juniper Creek - OR-034-047 - Map 2 of 2**



**Wilderness Characteristics - Land Treatments**  
**Juniper Creek - OR-034-047 - Map 2 of 2**

OBJECTID*	NAME	TREATMENT TYPE	SEED GROUP	DATE
1902	ANTelope FLAT SEEDING	Plow/Disc	Not Applicable	1967
1903	ANTelope FLAT SEEDING	Drill Seeding	Unknown	1967
1904	BAKER CREEK SEEDING	Chemical Treatment	Not Applicable	1973
1905	WILLCAT BRUSH CONTROL	Chemical Treatment	Not Applicable	1970
1906	RED BUTTE BRUSH CONTROL	Chemical Treatment	Not Applicable	1969

Note: The Land Treatments represented by navy blue dots on the map to the left are labeled with the treatments' ObjectIDs listed in the first field of the Land Treatments table shown above. Multiple types of treatments may have been applied to the same area. For example, one treatment area may have been plowed and drill seeded - a record is shown in the table for each type of treatment.