

Wilderness Inventory Unit Index of Documents  
**Joseph Creek OR-035-027, 14 total pages**

Page 1: Index Cover Sheet

[Page 2: Form 1 – Documentation of BLM Wilderness Inventory: Findings on Record](#)

[Page 5: Form 2 – Documentation of Current Wilderness Inventory Conditions](#)

[Page 9: Form 2 – Summary of Findings and Conclusion](#)

[Page 10: Wilderness Characteristics Overview–Joseph Creek OR-035-027 Map 1 of 1](#)

[Page 11: OR-035-027 Joseph Creek BLM Photos](#)

**Prepared by:  
U.S. Department of the Interior  
Bureau of Land Management  
Vale District Office  
100 Oregon Street  
Vale, Oregon 97918**



## **H-6300-1-WILDERNESS INVENTORY MAINTENANCE IN BLM OREGON/WASHINGTON**

### **APPENDIX B – INVENTORY AREA EVALUATION**

#### **Evaluation of Current Conditions:**

- 1) Document and review the existing BLM wilderness inventory findings on file, if available, regarding the presence or absence of individual wilderness characteristics, using Form 1, below.
- 2) Consider relevant information regarding current conditions available in the office to identify and describe any changes to the existing information (use interdisciplinary (ID) team knowledge, aerial photographs, field observations, maps, etc.), and document your findings on Form 2, below.

When Citizen Information has been submitted regarding wilderness characteristics, document the submitted materials including: date of Submission; Name of District(s) and Field Office(s) Affected; Type of material Submitted (e.g. narrative, map, photo). Evaluate any submitted citizen information regarding the validity of proposed boundaries of the unit(s), the existence of roads and other boundary features, the size of the unit(s), and the presence or absence of wilderness characteristics based on relevant information available in the office (prior BLM inventories, ID team knowledge, aerial photographs, field observations, maps, etc.)

Conduct field reviews as necessary to verify information and to ascertain current conditions. Reach conclusions on current conditions including boundaries, size of areas and presence or absence of wilderness characteristics. Fully explain the basis for each conclusion on form 2, including any critical differences between BLM and citizen information.

Document your findings regarding current conditions for each inventoried area. Describe how the present conditions are similar to, or have changed from, the conditions documented in the original wilderness inventory. Document your findings on Form 2 for each inventory area. Cite to or attach data considered, including photographs, maps, GIS layers, field trip notes, project files, *etc.*

Year: 2011 Unit Number/Name: OR-035-027 — Joseph Creek

**FORM 1 -- DOCUMENTATION OF BLM WILDERNESS INVENTORY  
FINDINGS ON RECORD**

**1. Is there existing BLM wilderness inventory information on all or part of this area?**

Yes        No **X** (If yes, and if more than one unit is within the area, list the names of those units.):

**A.) Inventory Source(s) -- (X) Denotes all applicable BLM Inventory files, printed maps, or published BLM Decision documents with information pertaining to this unit.**

**Wilderness Inventories**

- ( ) 1978 – BLM Wilderness Inventory
- ( ) April 1979 – *Wilderness -- Proposed Initial Inventory – Roadless Areas and Islands Which Clearly Do Not have Wilderness Characteristics, Oregon and Washington*

**Wilderness Decision Documents**

- ( ) August 1979 – *Wilderness Review – Initial Inventory, Final Decision on Public Lands Obviously Lacking Wilderness Characteristics and Announcement of Public Lands to be Intensively Inventoried for Wilderness Characteristics, Oregon and Washington* (green document)
- ( ) October 1979 – *Wilderness Review – Intensive Inventory - Oregon, Proposed Decision on the Intensive Wilderness Inventory of Selected Areas* (grey document).
- ( ) March 1980 – *Wilderness Review – Intensive Inventory; Final Decisions on 30 Selected Units in Southeast Oregon and Proposed Decisions on Other Intensively Inventoried Units in Oregon and Washington* (orange document)
- ( ) November 1980 - *Wilderness Inventory – Oregon and Washington, Final Intensive Inventory Decisions* (brown document)
- ( ) November 1981 *Stateline Intensive Wilderness Inventory Final Decision, Oregon, Idaho, Nevada, Utah* (tan document).

**B.) Inventory Unit Name(s)/Number(s)**

N/A

**C.) Map Name(s)/Number(s)**

- ( ) Final Decision – Initial Wilderness Inventory Map, August 1979, Oregon
- ( ) Proposed Decision -- Intensive Wilderness Inventory of Selected Areas Map, October 1979, Oregon
- ( ) Intensive Wilderness Inventory Map, March 1980, Oregon
- ( ) Intensive Wilderness Inventory --Final Decisions Map, November 1980, Oregon
- ( ) November, 1981 *Stateline Intensive Wilderness Inventory Final Decision, Oregon, Idaho, Nevada, Utah* (tan document).

**D.) BLM District(s)/Field Office(s)**

Vale District/ Baker Field Office

**2. BLM Inventory Findings on Record**

(Existing inventory information regarding wilderness characteristics (if more than one BLM inventory unit is associated with the area, list each unit and answer each question individually for each inventory unit):

**Inventory Source:** See above.

<b>Unit# / Name</b>	<b>Size (historic acres)</b>	<b>Natural Condition? Y/N</b>	<b>Outstanding Solitude? Y/N</b>	<b>Outstanding Primitive &amp; Unconfined Recreation? Y/N</b>	<b>Supplemental Values? Y/N</b>
<b>TOTAL</b>					

## **H-6300-1-WILDERNESS INVENTORY MAINTENANCE IN BLM OREGON/WASHINGTON**

### **APPENDIX B – INVENTORY AREA EVALUATION**

#### **Evaluation of Current Conditions:**

- 1) Document and review the existing BLM wilderness inventory findings on file, if available, regarding the presence or absence of individual wilderness characteristics, using Form 1, below.
- 2) Consider relevant information regarding current conditions available in the office to identify and describe any changes to the existing information (use interdisciplinary (ID) team knowledge, aerial photographs, field observations, maps, etc.), and document your findings on Form 2, below.

When Citizen Information has been submitted regarding wilderness characteristics, document the submitted materials including: date of Submission; Name of District(s) and Field Office(s) Affected; Type of material Submitted (e.g. narrative, map, and photos). Evaluate any submitted citizen information regarding the validity of proposed boundaries of the unit(s), the existence of roads and other boundary features, the size of the unit(s), and the presence or absence of wilderness characteristics based on relevant information available in the office (prior BLM inventories, ID team knowledge, aerial photographs, field observations, maps, etc.)

Conduct field reviews as necessary to verify information and to ascertain current conditions. Reach conclusions on current conditions including boundaries, size of areas and presence or absence of wilderness characteristics. Fully explain the basis for each conclusion on form 2, including any critical differences between BLM and citizen information.

Document your findings regarding current conditions for each inventoried area. Describe how the present conditions are similar to, or have changed from, the conditions documented in the original wilderness inventory. Document your findings on Form 2 for each inventory area. Cite to or attach data considered, including photographs, maps, GIS layers, field trip notes, project files, *etc.*

## **FORM 2 -- DOCUMENTATION OF CURRENT WILDERNESS INVENTORY CONDITIONS**

**Unit Number/Name:** OR-035-027 — Joseph Creek

**NOTE:** This inventory unit OR-035-027 is identified herein because an adjacent contiguous federal US Forest Service roadless area (Joseph Canyon “potential wilderness area”) is presently being studied by the federal US Forest Service (USFS) in support of that agency’s forthcoming Blue Mountains Forest Plan. The Record of Decision (ROD) of the final Forest Plan will include whether or not all or part of the USFS’s “potential wilderness area” will be a designated “proposed wilderness area”. Respectively, given the present status of the USFS’s identity of its “potential wilderness area”, the information herein of OR-035-027 is provided to meet current BLM direction regarding interagency coordination when conducting wilderness inventory. This BLM inventory information would be available – and OR-035-027 subject to further coordinated BLM-USFS wilderness review -- should the USFS’s ROD of the final Blue Mountains Forest Plan designate any of its federal land contiguous to OR-035-027 as a “proposed wilderness area”.

Only Congress can designate federal lands as a component of the National Wilderness Preservation System. When making its decision, Congress can consider federal agencies’ wilderness recommendations (e.g., USFS “proposed wilderness areas” and affiliated qualifying contiguous BLM public lands).

**Description of Current Conditions:** [Include land ownership, location, topography, vegetation features and summary of major human uses/activities.]

### **1. Is the unit of sufficient size?**

Yes   X                        No           

**Description:** Refer to this inventory unit’s associated Map 1 for its location. The inventory unit is composed of public land abutting and contiguous to the USFS’s current Joseph Canyon “potential wilderness area” and is 2,189 acres in size. Size criterion is met because the unit is contiguous to USFS lands presently being evaluated for possible wilderness. Individually, this unit does not meet the size criterion of being greater than 5,000 acres. However, by being contiguous to a USFS “potential wilderness area” (Joseph Canyon); for purposes of BLM wilderness characteristics inventory maintenance, size criteria is met and the BLM unit is addressed under this single BLM inventory unit, OR-035-027.

The boundary features for the unit is the portion that abuts the USFS administrative boundary to the east and south, private lands and state highway 3 to the west, and private lands to the north. Boundary roads are mechanically maintained as needed to provide for relatively regular and continuous use.

**2. Is the unit in a natural condition?**Yes   X              No \_\_\_\_\_            N/A \_\_\_\_\_

**Description:** The unit includes moderate to extreme sloped upper terrain that drops dramatically until it reaches Joseph Creek which bisects the unit. The creek flows north/northeast through laterally entrenched meanders of the Grande Ronde basalt lava flows creating significant and panoramic views from the higher elevations of the unit as a result of its steep to very steep canyon slopes. Upper elevations consist of steep to moderate terrain. Vegetation is a varied mix of coniferous stringers and pockets of timber primarily towards the southern end of the unit. The remainder of the unit is characterized as some deciduous trees existing within the canyon bottom mixed with sagebrush, native shrubs and both native and non-native grasses which dominate most of the unit.

The unit also has 2.59 miles of the river with associated (up to a) half mile wide corridor (a quarter mile on each river side) -- which BLM has determined is both eligible and suitable as a qualifying potential component of the National Wild and Scenic Rivers System (NWSRS). The river within this unit is part of a Resource Management Plan Revision for the Baker Field Office, and eligibility/suitability analysis of free-flowing rivers and streams is required during this process under the federal Wild and Scenic Rivers Act. The 2.59 miles of the river -- from the USFS/BLM boundary downstream to the BLM/private land boundary-- has a tentative classification of “wild”. Only Congress can designate a free-flowing waterway as a component of the NWSRS. The outstandingly remarkable values of the river are scenery and geology. Each of these values are found in the 2.59 mile segment/corridor of the river located within OR-035-027. For additional information, see BLM’s March 2010 “Vale District Office Eligibility Inventory of Potential Wild and Scenic Rivers in the Baker Resource Management Plan Planning Area- Final Report.

Refer to this inventory unit’s associated Map 1 for human imprints. The unit has 2.8 miles of MPTs and 0.6 miles of rangeland fencing. This unit appears to be affected primarily by the forces of nature with the imprint of humans substantially unnoticeable to the average visitor.

**3. Does the unit have outstanding opportunities for solitude?**Yes \_\_\_\_\_            No \_\_\_\_\_            N/A   X  

**Description:** At this time, no finding is made for outstanding opportunities for solitude. This criterion would be evaluated for this OR-035-027 unit in conjunction with the contiguous USFS lands, should that agency’s Blue Mountains Forest Plan ROD include designation of a Joseph Canyon “proposed wilderness area” which abuts contiguous BLM parcels of this OR-035-027 inventory unit.

Note: Procedures of both the BLM land use planning process (e.g., Resource Management Plan) and of associated environmental review (e.g., Environmental Impact Statement) would be applied for deciding how, in the interim, this OR-035-027 and other BLM wilderness characteristics inventory units contiguous to USFS-designated “potential wilderness areas” and “proposed wilderness areas” would be managed. For USFS “proposed wilderness areas” and their contiguous BLM public lands, coordinated cohesive management direction within both federal agencies would be an objective, so to maintain the contiguous federal lands’ wilderness eligibility until such time Congress either designates the federal lands as a Wilderness Area component of the National Wilderness System or releases the federal lands from further wilderness consideration.

**4. Does the unit have outstanding opportunities for primitive and unconfined recreation?**

Yes \_\_\_\_\_ No \_\_\_\_\_ N/A  X

**Description:** At this time, no finding is made for outstanding opportunities for primitive and unconfined recreation. This criterion would be evaluated for this OR-035-027 unit in conjunction with the contiguous USFS lands, should that agency’s Blue Mountains Forest Plan ROD include designation of a Joseph Canyon “proposed wilderness area” which abut contiguous BLM parcels of this OR-035-027 inventory unit.

Note: Procedures of both the BLM land use planning process (e.g., Resource Management Plan) and of associated environmental review (e.g., Environmental Impact Statement) would be applied for deciding how, in the interim, this OR-035-027 and other BLM wilderness characteristics inventory units contiguous to USFS-designated “potential wilderness areas” and “proposed wilderness areas” would be managed. For USFS “proposed wilderness areas” and their contiguous BLM public lands, coordinated cohesive management direction within both federal agencies would be an objective, so to maintain the contiguous federal lands’ wilderness eligibility until such time Congress either designates the federal lands as a Wilderness Area component of the National Wilderness System or releases the federal lands from further wilderness consideration.

**5. Does the unit have supplemental values?**

Yes \_\_\_\_\_ No  X  N/A \_\_\_\_\_

**Description:**



**Summary of Findings and Conclusion**

**Unit Name and Number:** OR-035-027 — Joseph Creek


**Summary Results of Analysis:**

1. Does the area meet any of the size requirements?  Yes  No
2. Does the area appear to be natural?  Yes  No
3. Does the area offer outstanding opportunities for solitude or a primitive and unconfined type of recreation?  Yes  No  NA
4. Does the area have supplemental values?  Yes  No  NA

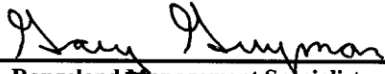
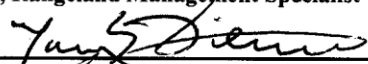
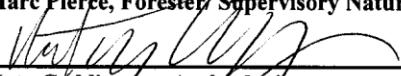
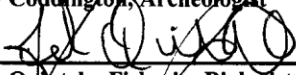
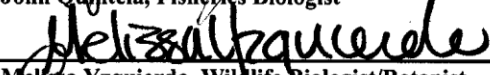
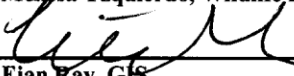
**Conclusion \* -- check one:**

- \* The area, or a portion of the area, has wilderness character.  
 \* The area does not have wilderness character.

*\* -- No conclusion can be determined at this time. See the discussion under the criterion for outstanding opportunities for solitude and for outstanding opportunities for primitive and unconfined recreation in this Form 2 of this OR-035-027 inventory unit.*

**Prepared by:**  10-3-11  
 Kevin McCoy, Outdoor Recreation Planner

**Team Members:**

<u></u>	<u>10/3/11</u>
Gary Guymon, Rangeland Management Specialist	Date
<u></u>	<u>10/03/11</u>
Marc Pierce, Forester/ Supervisory Natural Resource Specialist	Date
<u></u>	<u>10/5/2011</u>
Katy Coddington, Archeologist	Date
<u></u>	<u>10/3/11</u>
John Quintela, Fisheries Biologist	Date
<u></u>	<u>10/3/11</u>
Melissa Yzquierdo, Wildlife Biologist/Botanist	Date
<u></u>	<u>10-6-11</u>
Eian Ray, GIS	Date

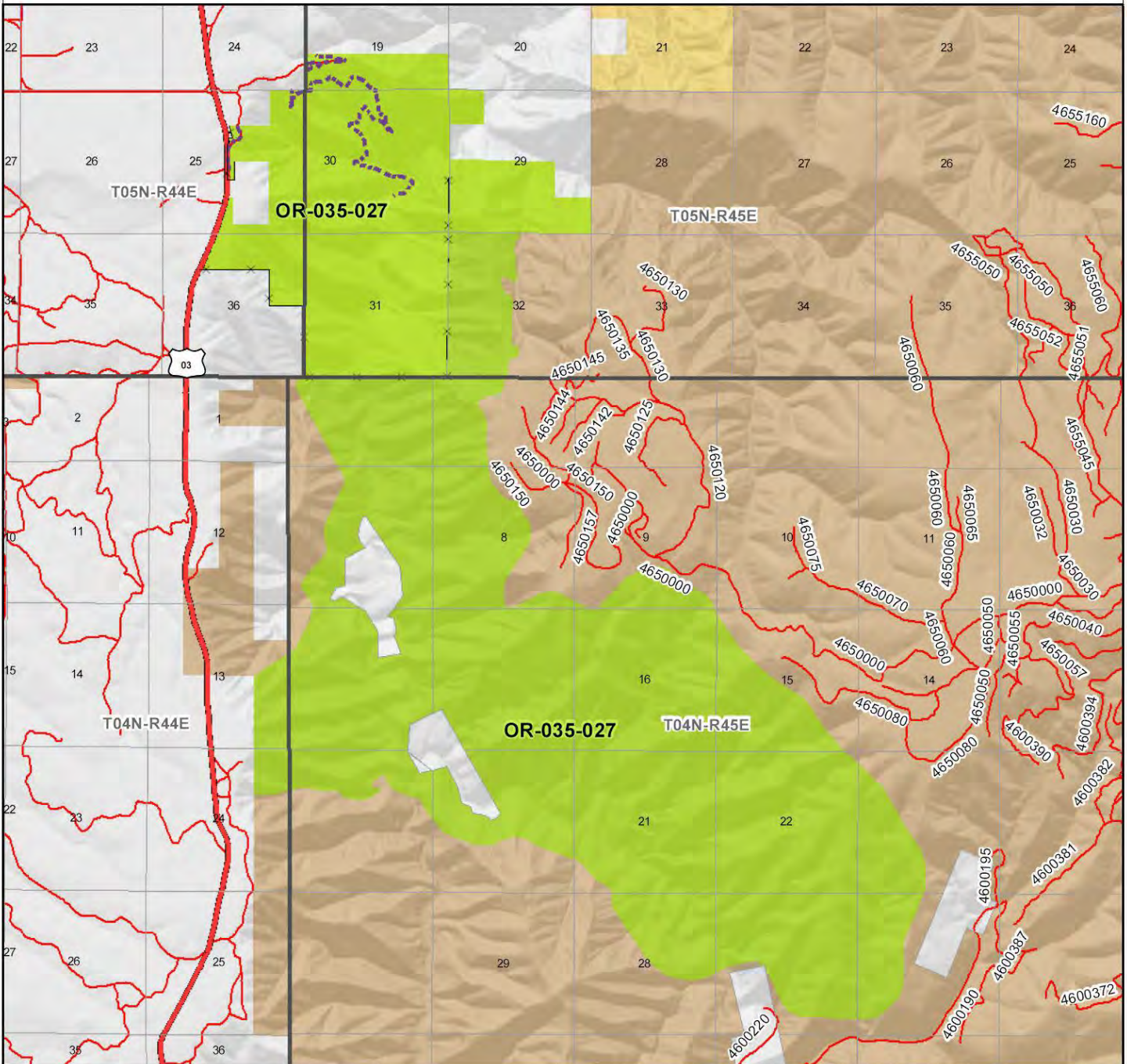
**Approved by:**

 10-11-11  
 Ted Davis, Baker Field Office Manager Date

*This form documents information that constitutes an inventory finding on wilderness characteristics. It does not represent a formal land use allocation or a final agency decision subject to administrative remedies under either 43 CFR parts 4 or 1610.5-2.*

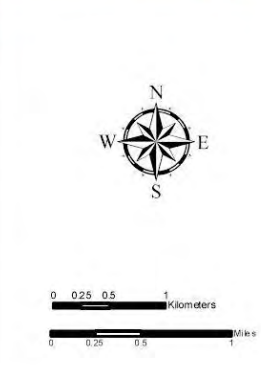
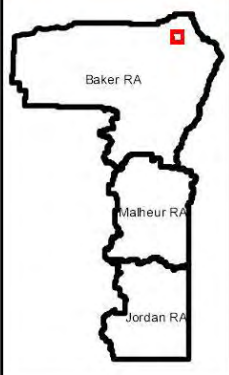
# Wilderness Characteristics - Overview

## Joseph Creek USFS Contiguous - OR-035-027 - Map 1 of 1



### Legend

- |   |   |
|---|---|
| <ul style="list-style-type: none"> <li> Developed Spring</li> <li> Wildlife Guzzler</li> <li> Earthen Reservoir</li> <li> Pipeline</li> <li> Trough</li> <li> Fence</li> <li> Storage Tank</li> <li> Surface Mining Disturbance</li> <li> Sage Grouse Lek</li> <li> Special Status Plant</li> <li> BLM Wild Char Inventory Unit</li> <li> Wilderness Study Area</li> <li> Mineral Material Site</li> <li> Road/Utility Right-of-Way</li> <li> Major Water Body</li> </ul> | <p><b>Route Types - BLM Determination</b></p> <ul style="list-style-type: none"> <li> Boundary Road</li> <li> Motorized Primitive Trail (MPT)</li> <li> Discontinued Use</li> </ul> <p><b>Routes - Outside Wild Char Unit</b></p> <ul style="list-style-type: none"> <li> Major Highway</li> <li> BLM Numbered &amp; Other Routes</li> </ul> <p><b>Land Ownership</b></p> <ul style="list-style-type: none"> <li> Bureau of Land Management</li> <li> State</li> <li> Private</li> <li> Other Federal Land</li> </ul> |
|---|---|



**U.S. DEPARTMENT OF THE INTERIOR**  
BUREAU OF LAND MANAGEMENT



**VALE DISTRICT**  
October 28, 2011

No warranty is made by the Bureau of Land Management as to the accuracy, reliability or completeness of these data for individual or aggregate use with other data. Original data were compiled from various sources. This information may not meet National Map Accuracy Standards. This product was developed through digital means and may be updated without notification.

--FINAL--

