

Wilderness Inventory Unit Index of Documents
Jaca Place OR-036-038, 10 total pages

Page 1: Index Cover Sheet

[Page 2: Form 1 – Documentation of BLM Wilderness Inventory: Findings on Record](#)

[Page 5: Form 2 – Documentation of Current Wilderness Inventory Conditions](#)

[Page 8: Form 2 – Summary of Findings and Conclusion](#)

[Page 9: Wilderness Characteristics Overview–Jaca Place OR-036-038 Map 1 of 2](#)

[Page 10: Wilderness Characteristics-Land Treatments-Jaca Place OR-036-038 Map 2 of 2](#)

**Prepared by:
U.S. Department of the Interior
Bureau of Land Management
Vale District Office
100 Oregon Street
Vale, Oregon 97918**



H-6300-1-WILDERNESS INVENTORY MAINTENANCE IN BLM OREGON/WASHINGTON

APPENDIX B – INVENTORY AREA EVALUATION

Evaluation of Current Conditions:

- 1) Document and review the existing BLM wilderness inventory findings on file, if available, regarding the presence or absence of individual wilderness characteristics, using Form 1, below.
- 2) Consider relevant information regarding current conditions available in the office to identify and describe any changes to the existing information (use interdisciplinary (ID) team knowledge, aerial photographs, field observations, maps, etc.), and document your findings on Form 2, below.

When Citizen Information has been submitted regarding wilderness characteristics, document the submitted materials including: date of Submission; Name of District(s) and Field Office(s) Affected; Type of material Submitted (e.g. narrative, map, photo). Evaluate any submitted citizen information regarding the validity of proposed boundaries of the unit(s), the existence of roads and other boundary features, the size of the unit(s), and the presence or absence of wilderness characteristics based on relevant information available in the office (prior BLM inventories, ID team knowledge, aerial photographs, field observations, maps, etc.)

Conduct field reviews as necessary to verify information and to ascertain current conditions. Reach conclusions on current conditions including boundaries, size of areas and presence or absence of wilderness characteristics. Fully explain the basis for each conclusion on form 2, including any critical differences between BLM and citizen information.

Document your findings regarding current conditions for each inventoried area. Describe how the present conditions are similar to, or have changed from, the conditions documented in the original wilderness inventory. Document your findings on Form 2 for each inventory area. Cite to or attach data considered, including photographs, maps, GIS layers, field trip notes, project files, *etc.*

Year: 2009 Unit Number/Name: OR-036-038 -- Jaca Place

FORM 1 -- DOCUMENTATION OF BLM WILDERNESS INVENTORY FINDINGS ON RECORD

1. Is there existing BLM wilderness inventory information on all or part of this area?

Yes X No _____ (If yes, and if more than one unit is within the area, list the names of those units.):

A.) Inventory Source(s) -- (X) Denotes all applicable BLM Inventory files, printed maps, or published BLM Decision documents with information pertaining to this unit.

Wilderness Inventories

- (X) 1978-1980 – BLM Wilderness Inventory Unit partially of OR-03-12-15 Jaca Place. (unpublished BLM documents in case files)
- () April 1979 – *Wilderness -- Proposed Initial Inventory – Roadless Areas and Islands Which Clearly Do Not have Wilderness Characteristics, Oregon and Washington*

Wilderness Decision Documents

- () August 1979 – *Wilderness Review – Initial Inventory, Final Decision on Public Lands Obviously Lacking Wilderness Characteristics and Announcement of Public Lands to be Intensively Inventoried for Wilderness Characteristics, Oregon and Washington* (green document)
- () October 1979 – *Wilderness Review – Intensive Inventory - Oregon, Proposed Decision on the Intensive Wilderness Inventory of Selected Areas* (grey document)
- () March 1980 – *Wilderness Review – Intensive Inventory; Final Decisions on 30 Selected Units in Southeast Oregon and Proposed Decisions on Other Intensively Inventoried Units in Oregon and Washington* (orange document)
- () November 1980 - *Wilderness Inventory – Oregon and Washington, Final Intensive Inventory Decisions* (brown document)
- () November 1981 *Stateline Intensive Wilderness Inventory Final Decision, Oregon, Idaho, Nevada, Utah* (tan document)

B.) Inventory Unit Name(s)/Number(s)

Partially of BLM OR-03-12-15 Jaca Place

C.) Map Name(s)/Number(s)

- () Final Decision – Initial Wilderness Inventory Map, August 1979, Oregon
- () Proposed Decision -- Intensive Wilderness Inventory of Selected Areas Map, October 1979, Oregon
- () Intensive Wilderness Inventory Map, March 1980, Oregon
- () Intensive Wilderness Inventory --Final Decisions Map, November 1980, Oregon
- () November, 1981 *Stateline Intensive Wilderness Inventory Final Decision, Oregon, Idaho, Nevada, Utah* (tan document)

D.) BLM District(s)/Field Office(s)

Vale District/Jordan Resource Area

2. BLM Inventory Findings on Record

(Existing inventory information regarding wilderness characteristics (if more than one BLM inventory unit is associated with the area, list each unit and answer each question individually for each inventory unit):

Inventory Source: See above.

Unit#/ Name	Size (historic acres)	Natural Condition? Y/N	Outstanding Solitude? Y/N	Outstanding Primitive & Unconfined Recreation? Y/N	Supplemental Values? Y/N
Partially of OR-03-12-15 Jaca Place	5,430	*	*	*	*
TOTAL	5,430				

* Determinations for these criteria were not described for the inventory unit.

H-6300-1-WILDERNESS INVENTORY MAINTENANCE IN BLM OREGON/WASHINGTON

APPENDIX B – INVENTORY AREA EVALUATION

Evaluation of Current Conditions:

- 1) Document and review the existing BLM wilderness inventory findings on file, if available, regarding the presence or absence of individual wilderness characteristics, using Form 1, below.
- 2) Consider relevant information regarding current conditions available in the office to identify and describe any changes to the existing information (use interdisciplinary (ID) team knowledge, aerial photographs, field observations, maps, etc.), and document your findings on Form 2, below.

When Citizen Information has been submitted regarding wilderness characteristics, document the submitted materials including: date of Submission; Name of District(s) and Field Office(s) Affected; Type of material Submitted (e.g. narrative, map, and photos). Evaluate any submitted citizen information regarding the validity of proposed boundaries of the unit(s), the existence of roads and other boundary features, the size of the unit(s), and the presence or absence of wilderness characteristics based on relevant information available in the office (prior BLM inventories, ID team knowledge, aerial photographs, field observations, maps, etc.)

Conduct field reviews as necessary to verify information and to ascertain current conditions. Reach conclusions on current conditions including boundaries, size of areas and presence or absence of wilderness characteristics. Fully explain the basis for each conclusion on form 2, including any critical differences between BLM and citizen information.

Document your findings regarding current conditions for each inventoried area. Describe how the present conditions are similar to, or have changed from, the conditions documented in the original wilderness inventory. Document your findings on Form 2 for each inventory area. Cite to or attach data considered, including photographs, maps, GIS layers, field trip notes, project files, *etc.*

FORM 2 -- DOCUMENTATION OF CURRENT WILDERNESS INVENTORY CONDITIONS

Unit Number/Name: OR-036-038 -- Jaca Place

Description of Current Conditions: [Include land ownership, location, topography, vegetation features and summary of major human uses/activities.]

1. Is the unit of sufficient size?

Yes X No

Description: Refer to this inventory unit's associated Map 1 for its location. This 16,014 acre unit includes the late 1970's BLM unit OR-03-12-15, but at the time the unit was further reduced in size, to the point it was only 5,430 acres. Presently, the unit has the same bounds as OR-03-12-15 due to a vehicle route that was then determined to be a road has since changed status to a motorized primitive trail (MPT) due to no conducted mechanical maintenance and with no BLM intent to retain the route for relatively regular and continuous use. The unit boundary consists of the right-of-way of Highway 95 on its east side, County Roads 847 and 640 on its north boundary, BLM 6321-0-00 on its west side, and private property and County Road 823 and 2 BLM-designated mineral materials sites (one each on the north and south boundaries). The boundary roads receive mechanical maintenance as needed to keep them passable on a relatively regular and seasonally continuous basis.

2. Is the unit in a natural condition?

Yes No X N/A

Description: The unit is relatively flat with elevations ranging from 4,533 feet to 4,782 feet. Oregon Canyon Creek traverses centrally through the unit's flatlands and has very little topographic relief associated with it. Vegetation consists predominately of sagebrush and both native and non-native grasses.

Refer to the unit's associated Map 1 and Map 2 for human imprints within the unit. There is 16.3 miles of 6 MPTs, 14.5 miles of rangeland fences, 7.2 miles of 2 water pipelines with 5 troughs. There is a 0.4 mile abandoned motorized vehicle route which has no remaining visible features. Eleven vegetation manipulation projects have – over time – affected about 85% of the unit (implemented 1967-2007). Presently, the 2007 McDermitt Seeding West project ((brush beating and disc drilled seeding of non-native grasses) has substantial linear-appearing furrows visually apparent over much of its approximate 5,000 acres centrally located within the unit. This visually apparent seeding leaves an insufficient congruent area that appears substantially unaffected by human imprints. Respectively, the works of man are substantially noticeable. To the average visitor, the unit's present visual appearance is affected primarily by the influences of man, and not affected primarily by the forces of nature.

3. Does the unit have outstanding opportunities for solitude?Yes _____ No X N/A _____

Description: Vegetation types do not possess adequate height or density to screen visitors from each other. Furthermore, the nearly flat terrain which dominates about two-thirds of the unit provides no topographic screening. Within the remaining third of the unit, the slightly sloped terrain with the terminating minor and very shallow flat lands also does not have adequate topography to provide screening sufficient for providing outstanding opportunities for solitude. Even with consideration of the unit's size and configuration, for the above stated reasons -- although there are locations where a visitor has the opportunity to sense being isolated -- the unit does not possess sufficient properties -- individually or collectively -- to provide for outstanding opportunities for solitude.

4. Does the unit have outstanding opportunities for primitive and unconfined recreation?Yes _____ No X N/A _____

Description: Opportunities for primitive and unconfined types of recreation are available in the unit. However, opportunities for activities such as hiking, backpacking, hunting, wildlife viewing, horseback riding, and photography are not outstanding because the unit lacks scenic quality, diversity of landforms, challenging terrain, or unique or special features to draw a recreating visitor to the unit. For these reasons, the unit does not provide outstanding opportunities for primitive and unconfined recreation.

5. Does the unit have supplemental values?Yes _____ No X N/A _____**Description:**

Summary of Findings and Conclusion

Unit Name and Number: OR-036-038 -- Jaca Place

Summary Results of Analysis:

- 1. Does the area meet any of the size requirements? Yes No
- 2. Does the area appear to be natural? Yes No
- 3. Does the area offer outstanding opportunities for solitude or a primitive and unconfined type of recreation? Yes No NA
- 4. Does the area have supplemental values? Yes No NA

Conclusion -- check one:

- The area, or a portion of the area, has wilderness character.
- The area does not have wilderness character.

Prepared by: Robert Alward
Robert Alward, Wilderness Planner, contractor

Team Members:

<u>Richard White</u>	4/29/10
Richard White, Rangeland Management Specialist	Date
<u>Marcy Egger</u>	5/10/10
Marcy Egger, Range Management Specialist	Date
<u>David Draheim</u>	2/10/10
David Draheim, Outdoor Recreation Planner	Date
<u>Garth Ross</u>	5/13/2010
Garth Ross, Wildlife Biologist	Date
<u>Jack Wenderoth</u>	5/17/2010
Jack Wenderoth, Planning Contractor	Date
<u>Jon Sadowski</u>	4-28-2010
Jon Sadowski, Environmental Contractor	Date
<u>Eian Ray</u>	5-14-10
Eian Ray, GIS Specialist, contractor	Date
<u>Brent Grasty</u>	5/18/10
Brent Grasty, GIS Coordinator	Date

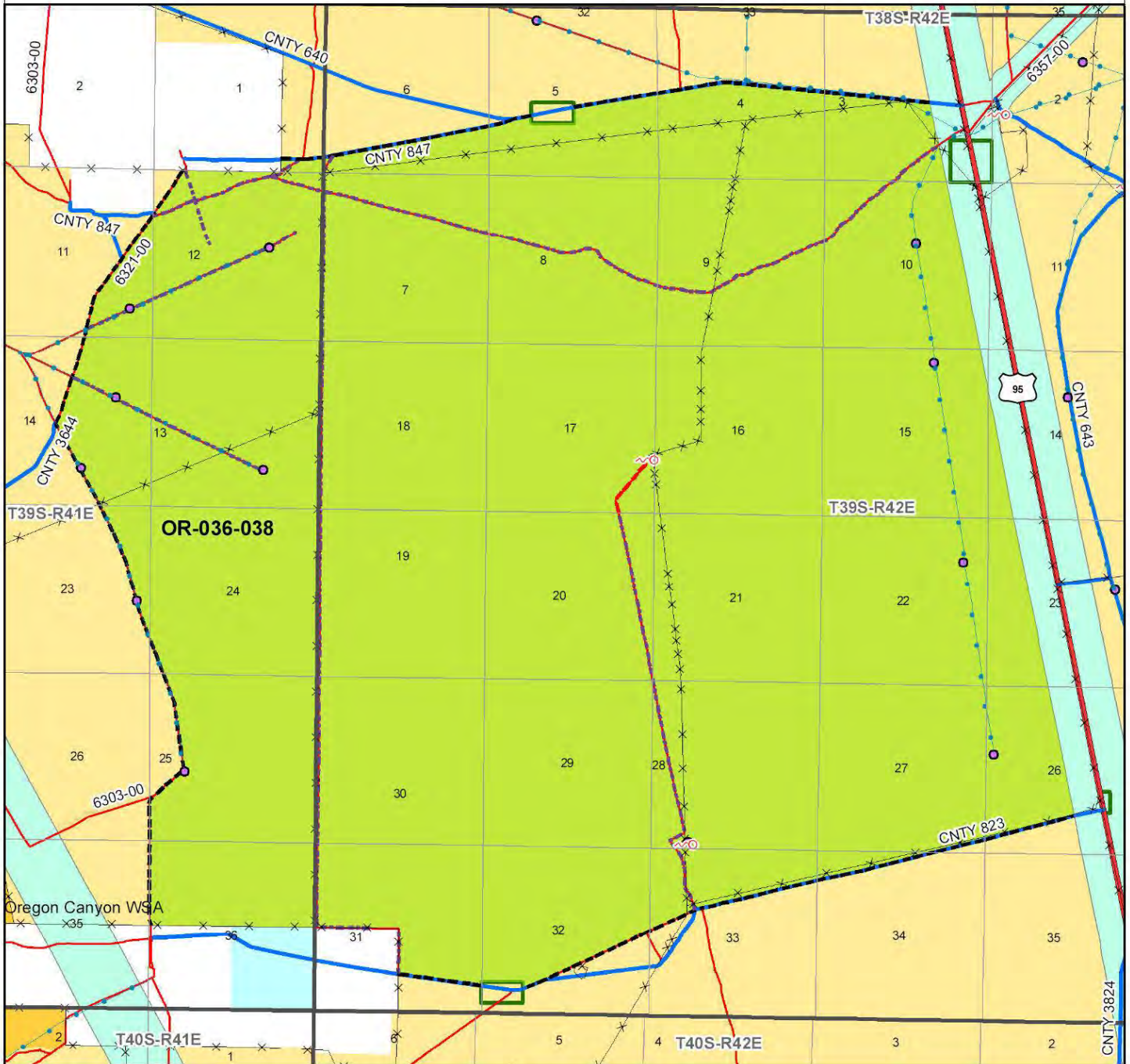
Approved by:

Carolyn R. Freeborn 7/19/2010
Carolyn Freeborn, Jordan Resource Area Field Manager Date

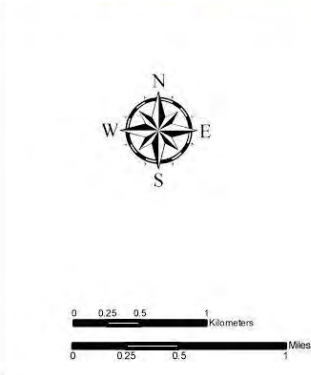
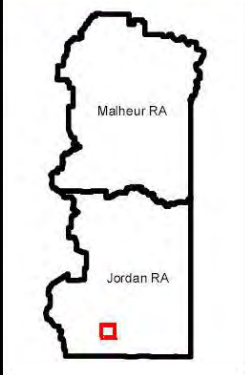
This form documents information that constitutes an inventory finding on wilderness characteristics. It does not represent a formal land use allocation or a final agency decision subject to administrative remedies under either 43 CFR parts 4 or 1610.5-2.

Wilderness Characteristics - Overview

Jaca Place - OR-036-038 - Map 1 of 2



Legend	
	Developed Spring
	Wildlife Guzzler
	Earthen Reservoir
	Pipeline
	Trough
	Fence
	Storage Tank
	Surface Mining Disturbance
	Sage Grouse Lek
	Special Status Plant
	BLM Wild Char Inventory Unit
	Wilderness Study Area
	Mineral Material Site
	Road/Utility Right-of-Way
	Major Water Body
	Route Types - BLM Determination
	Road
	Interior Cherry Stem Road
	Motorized Primitive Trail (MPT)
	Discontinued Use
	Routes - Outside Wild Char Unit
	County
	Major Highway
	BLM Numbered & Other Routes
	Other Federal Land
	Land Ownership
	Bureau of Land Management
	State
	Private
	Other Federal Land



U.S. DEPARTMENT OF THE INTERIOR
BUREAU OF LAND MANAGEMENT

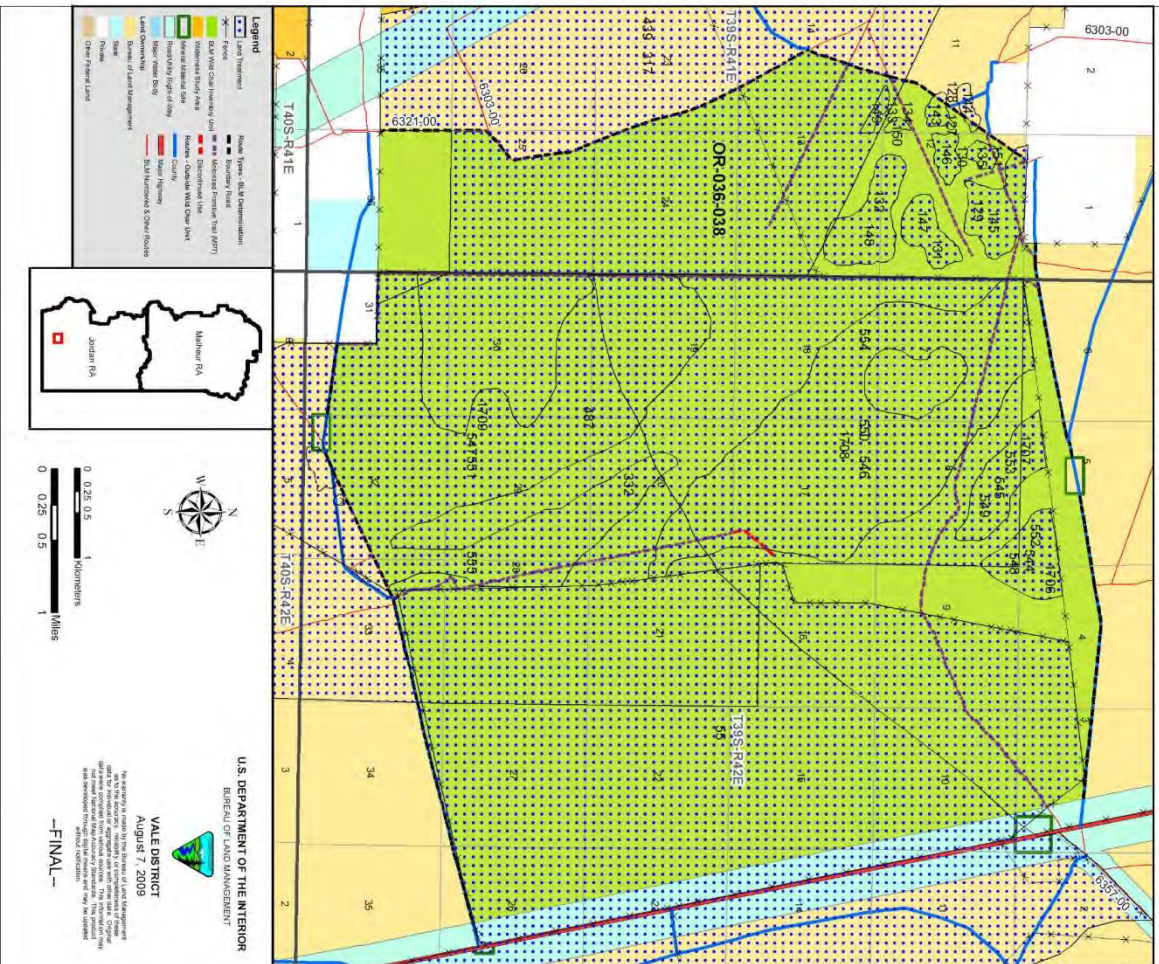


VALE DISTRICT
August 7, 2009

No warranty is made by the Bureau of Land Management as to the accuracy, reliability, or completeness of these data for individual or aggregate use with other data. Original data were compiled from various sources. This information may not meet National Map Accuracy Standards. This product was developed through digital means and may be updated without notification.

--FINAL--

Wilderness Characteristics - Land Treatments
Jaca Place - OR-036-038 - Map 2 of 2



Wilderness Characteristics - Land Treatments
Jaca Place - OR-036-038 - Map 2 of 2

OBJECTID*	NAME	TREATMENT TYPE	SEED GROUP	DATE
55	MCDERMITT SEEDINGS EAST	Drill Seeding	Non-native Grasses	2005/1201
127	ETCHART SEEDING	Brushbeat	Not Applicable	2006/0930
128	ETCHART SEEDING	Brushbeat	Not Applicable	2006/0930
129	ETCHART SEEDING	Brushbeat	Not Applicable	2006/0930
130	ETCHART SEEDING	Brushbeat	Not Applicable	2006/0930
131	ETCHART SEEDING	Brushbeat	Not Applicable	2006/0930
132	ETCHART SEEDING	Brushbeat	Not Applicable	2006/0930
133	ETCHART SEEDING	Brushbeat	Not Applicable	2006/0930
134	ETCHART SEEDING	Brushbeat	Not Applicable	2006/0930
135	ETCHART SEEDING	Brushbeat	Not Applicable	2006/0930
143	ETCHART SEEDING	Drill Seeding	Non-native Grasses	2006/1215
144	ETCHART SEEDING	Drill Seeding	Non-native Grasses	2006/1215
145	ETCHART SEEDING	Drill Seeding	Non-native Grasses	2006/1215
146	ETCHART SEEDING	Drill Seeding	Non-native Grasses	2006/1215
147	ETCHART SEEDING	Drill Seeding	Non-native Grasses	2006/1215
148	ETCHART SEEDING	Drill Seeding	Non-native Grasses	2006/1215
149	ETCHART SEEDING	Drill Seeding	Non-native Grasses	2006/1215
150	ETCHART SEEDING	Drill Seeding	Non-native Grasses	2006/1215
151	ETCHART SEEDING	Drill Seeding	Non-native Grasses	2006/1215
317	OLD JACA SDG	Chemical Treatment	Not Applicable	1988
332	SCHOOLHOUSE ESR	Drill Seeding	Non and Native Grasse	1985
439	OLD JACA SDG	Drill Seeding	Non-native Grasses	1988
487	MCDERMITT SDG	Drill Seeding	Unknown	1976
544	MSW4	Drill Seeding	Non-native Grasses	2007
545	MSW4	Drill Seeding	Non-native Grasses	2007
546	MSW4	Drill Seeding	Non-native Grasses	2007
547	MSW4	Drill Seeding	Non-native Grasses	2007
548	MSW4	Drill Seeding	Non-native Grasses	2007
549	MSW4	Brushbeat	Not Applicable	2007
550	MSW4	Brushbeat	Not Applicable	2007
551	MSW4	Brushbeat	Not Applicable	2007
552	MCDERMITT SEEDINGS WEST	Brushbeat	Not Applicable	2007/1000
553	MCDERMITT SEEDINGS WEST	Brushbeat	Not Applicable	2007/1000
554	MCDERMITT SEEDINGS WEST	Brushbeat	Not Applicable	2007/1000
555	MCDERMITT SEEDINGS WEST	Brushbeat	Not Applicable	2007/1000
1706	MCDERMITT SEEDINGS WEST	Drill Seeding	Non-native Grasses	2007/1200
1707	MCDERMITT SEEDINGS WEST	Drill Seeding	Non-native Grasses	2007/1200
1708	MCDERMITT SEEDINGS WEST	Drill Seeding	Non-native Grasses	2007/1200
1709	MCDERMITT SEEDINGS WEST	Drill Seeding	Non-native Grasses	2007/1200
2069	COYNE SEEDING PROJECT	Drill Seeding	Non-native Grasses	1983
2104	COW HOLLOW SEEDING EXTENSION	Drill Seeding	Native Grasses	1986

Note: The Land Treatments represented by navy blue dots on the map to the left are labeled with the treatments' ObjectIDs listed in the first field of the Land Treatments table shown above. Multiple types of treatments may have been applied to the same area. For example, one treatment area may have been plowed and drill seeded - a record is shown in the table for each type of treatment.