

Wilderness Inventory Unit Index of Documents  
**Harper OR-034-029, 10 total pages**

Page 1: Index Cover Sheet

[Page 2: Form 1 – Documentation of BLM Wilderness Inventory: Findings on Record](#)

[Page 5: Form 2 – Documentation of Current Wilderness Inventory Conditions](#)

[Page 8: Form 2 – Summary of Findings and Conclusion](#)

[Page 9: Wilderness Characteristics Overview – Harper OR-034-029 Map 1 of 2](#)

[Page 10: Wilderness Characteristics-Land Treatments-Harper OR-034-029 Map 2 of 2](#)

**Prepared by:**  
**U.S. Department of the Interior**  
**Bureau of Land Management**  
**Vale District Office**  
**100 Oregon Street**  
**Vale, Oregon 97918**



## **H-6300-1-WILDERNESS INVENTORY MAINTENANCE IN BLM OREGON/WASHINGTON**

### **APPENDIX B – INVENTORY AREA EVALUATION**

#### **Evaluation of Current Conditions:**

- 1) Document and review the existing BLM wilderness inventory findings on file, if available, regarding the presence or absence of individual wilderness characteristics, using Form 1, below.
- 2) Consider relevant information regarding current conditions available in the office to identify and describe any changes to the existing information (use interdisciplinary (ID) team knowledge, aerial photographs, field observations, maps, etc.), and document your findings on Form 2, below.

When Citizen Information has been submitted regarding wilderness characteristics, document the submitted materials including: date of Submission; Name of District(s) and Field Office(s) Affected; Type of material Submitted (e.g. narrative, map, photo). Evaluate any submitted citizen information regarding the validity of proposed boundaries of the unit(s), the existence of roads and other boundary features, the size of the unit(s), and the presence or absence of wilderness characteristics based on relevant information available in the office (prior BLM inventories, ID team knowledge, aerial photographs, field observations, maps, etc.)

Conduct field reviews as necessary to verify information and to ascertain current conditions. Reach conclusions on current conditions including boundaries, size of areas and presence or absence of wilderness characteristics. Fully explain the basis for each conclusion on form 2, including any critical differences between BLM and citizen information.

Document your findings regarding current conditions for each inventoried area. Describe how the present conditions are similar to, or have changed from, the conditions documented in the original wilderness inventory. Document your findings on Form 2 for each inventory area. Cite to or attach data considered, including photographs, maps, GIS layers, field trip notes, project files, *etc.*

**Year:** 2008      **Unit Number/Name:** OR-034-029 – Harper

**FORM 1 -- DOCUMENTATION OF BLM WILDERNESS INVENTORY  
FINDINGS ON RECORD**

**1. Is there existing BLM wilderness inventory information on all or part of this area?**

Yes  No  (If yes, and if more than one unit is within the area, list the names of those units.):

**A.) Inventory Source(s) -- (X) Denotes all applicable BLM Inventory files, printed maps, or published BLM Decision documents with information pertaining to this unit.**

**Wilderness Inventories**

- (X) 1978 – BLM Wilderness Inventory Units OR-03-03-30, 3-49 Harper (unpublished BLM documents in case files)
- (X) April 1979 – *Wilderness -- Proposed Initial Inventory – Roadless Areas and Islands Which Clearly Do Not have Wilderness Characteristics, Oregon and Washington*

**Wilderness Decision Documents**

- (X) August 1979 – *Wilderness Review – Initial Inventory, Final Decision on Public Lands Obviously Lacking Wilderness Characteristics and Announcement of Public Lands to be Intensively Inventoried for Wilderness Characteristics, Oregon and Washington* (green document)
- ( ) October 1979 – *Wilderness Review – Intensive Inventory - Oregon, Proposed Decision on the Intensive Wilderness Inventory of Selected Areas* (grey document).
- ( ) March 1980 – *Wilderness Review – Intensive Inventory; Final Decisions on 30 Selected Units in Southeast Oregon and Proposed Decisions on Other Intensively Inventoried Units in Oregon and Washington* (orange document)
- ( ) November 1980 - *Wilderness Inventory – Oregon and Washington, Final Intensive Inventory Decisions* (brown document)
- ( ) November 1981 *Stateline Intensive Wilderness Inventory Final Decision, Oregon, Idaho, Nevada, Utah* (tan document).

**B.) Inventory Unit Name(s)/Number(s)**

BLM OR-03-03-30, 3-49 Harper

**C.) Map Name(s)/Number(s)**

- Final Decision – Initial Wilderness Inventory Map, August 1979, Oregon
- Proposed Decision -- Intensive Wilderness Inventory of Selected Areas Map, October 1979, Oregon
- Intensive Wilderness Inventory Map, March 1980, Oregon
- Intensive Wilderness Inventory --Final Decisions Map, November 1980, Oregon.
- November, 1981 *Stateline Intensive Wilderness Inventory Final Decision, Oregon, Idaho, Nevada, Utah* (tan document).

**D.) BLM District(s)/Field Office(s)**

Vale District Office/ Malheur Field Office

**2. BLM Inventory Findings on Record**

(Existing inventory information regarding wilderness characteristics (if more than one BLM inventory unit is associated with the area, list each unit and answer each question individually for each inventory unit):

**Inventory Source:** See above.

| Unit#/ Name              | Size (historic acres) | Natural Condition? Y/N | Outstanding Solitude? Y/N | Outstanding Primitive & Unconfined Recreation? Y/N | Supplemental Values? Y/N |
|--------------------------|-----------------------|------------------------|---------------------------|--|--------------------------|
| OR-03-03-30, 3-49 Harper | 6,600                 | N                      | *                         | *  | *                        |
| <b>TOTAL</b>             | 6,600                 |                        |                           |  |                          |

\* -- These criteria were not addressed in the inventory of this unit.

## **H-6300-1-WILDERNESS INVENTORY MAINTENANCE IN BLM OREGON/WASHINGTON**

### **APPENDIX B – INVENTORY AREA EVALUATION**

#### **Evaluation of Current Conditions:**

- 1) Document and review the existing BLM wilderness inventory findings on file, if available, regarding the presence or absence of individual wilderness characteristics, using Form 1, below.
- 2) Consider relevant information regarding current conditions available in the office to identify and describe any changes to the existing information (use interdisciplinary (ID) team knowledge, aerial photographs, field observations, maps, etc.), and document your findings on Form 2, below.

When Citizen Information has been submitted regarding wilderness characteristics, document the submitted materials including: date of Submission; Name of District(s) and Field Office(s) Affected; Type of material Submitted (e.g. narrative, map, photo). Evaluate any submitted citizen information regarding the validity of proposed boundaries of the unit(s), the existence of roads and other boundary features, the size of the unit(s), and the presence or absence of wilderness characteristics based on relevant information available in the office (prior BLM inventories, ID team knowledge, aerial photographs, field observations, maps, etc.)

Conduct field reviews as necessary to verify information and to ascertain current conditions. Reach conclusions on current conditions including boundaries, size of areas and presence or absence of wilderness characteristics. Fully explain the basis for each conclusion on form 2, including any critical differences between BLM and citizen information.

Document your findings regarding current conditions for each inventoried area. Describe how the present conditions are similar to, or have changed from, the conditions documented in the original wilderness inventory. Document your findings on Form 2 for each inventory area. Cite to or attach data considered, including photographs, maps, GIS layers, field trip notes, project files, *etc.*

## **FORM 2 -- DOCUMENTATION OF CURRENT WILDERNESS INVENTORY CONDITIONS**

**Unit Number/Name:** OR-034-029 – Harper

**Description of Current Conditions:** [Include land ownership, location, topography, vegetation features and summary of major human uses/activities.]

### **1. Is the unit of sufficient size?**

Yes   X   No       

**Description:** Refer to this document's associated Map 1 for the inventory unit's location. The boundaries are the same as those identified in BLM's original wilderness characteristics inventory of the late 1970's, except for presently recognizing the active utility and road ROW corridors affiliated with U.S. Highway 20. The 6,925 acre unit is also bounded by BLM roads 7332-0-00 and 7324-0-00, Malheur County Road 585 (Crowley Road with its ROW), and by abutting private and Oregon State lands. One private inholding of 160 acres is also a feature of the unit's boundary. The unit's boundary roads are mechanically maintained as needed to provide for relatively regular and seasonally continuous use.

### **2. Is the unit in a natural condition?**

Yes   X   No        N/A       

**Description:** The terrain consists of rolling to moderately steep hills with numerous side drainages dispersed throughout the unit; those to the west are associated with Squaw Creek, in the southeast with Cottonwood Creek, and in the unit's northwest draining to the main stem of Malheur River. Elevation ranges from approximately 2,600 to 3,720 feet. Vegetation consists predominately of native bunchgrass, sagebrush and non-native cheatgrass.

Refer to this document's associated Maps 1 and 2 for human imprints within the unit. There are 3.0 miles of rangeland fence, and 6.6 miles of 11 motorized primitive trails (MPT). In the unit's southern-most reaches the visual appearance of a pre-1978 rangeland drilled non-native crested wheatgrass seeding affected approximately 600 acres of the unit. This seeding was determined to be substantially noticeable to the average visitor at the time of the conducted wilderness characteristics inventory in the latter 1970's. At the time, the seeding had an adverse effect on the unit's natural condition and appearance. Presently, visual evidence of range drill furrow scaring and the seeding itself is no longer substantially noticeable as a human imprint to the average visitor of the unit. Due to their grouped and generally broad distribution and location relative to each other,

and the short length of the MPTs, individually or collectively the fences and MPTs allow the unit to appear to be affected primarily by the forces of nature with the imprint of humans being substantially unnoticeable.

**3. Does the unit have outstanding opportunities for solitude?**

Yes \_\_\_\_\_ No   X   N/A \_\_\_\_\_

**Description:** There is no vegetative screening. Elevations arrange from 2,600 to 3,720 feet. The unit is narrow, ranging between 1.25 and 2.5 miles wide, with the south half less than 1.5 miles in width. Its length is approximately 7 miles long. Due to elevation changes, some of the drainages provide for some sense of solitude, however, the unit's narrow, elongated configuration and lack of vegetative screening preclude outstanding opportunities for solitude.

**4. Does the unit have outstanding opportunities for primitive and unconfined recreation?**

Yes \_\_\_\_\_ No   X   N/A \_\_\_\_\_

**Description:** The area offers hunting of common upland and big game species (deer and chukar), but none of it is outstanding in character. There are no outstanding or unique features or attractions to draw primitive or unconfined recreational visitation. Additionally, the area has an ongoing history of widely dispersed recreational off-road 4-wheel drive motorized vehicle use which opposes what few primitive and unconfined recreational opportunities (with none being of outstanding quality) exist within the unit.

**5. Does the unit have supplemental values?**

Yes   X   No \_\_\_\_\_ N/A \_\_\_\_\_

**Description:** BLM has documented 14 sites of Malheur Valley fiddleneck. The plant is a BLM special status species.

Summary of Findings and Conclusion

Unit Name and Number: OR-034-029 – Harper

Summary Results of Analysis:

- 1. Does the area meet any of the size requirements?  X  Yes   No
- 2. Does the area appear to be natural?  X  Yes   No
- 3. Does the area offer outstanding opportunities for solitude or a primitive and unconfined type of recreation?   Yes  X  No   NA
- 4. Does the area have supplemental values?   Yes   No  X  NA

Conclusion -- check one:

The area, or a portion of the area, has wilderness character.

X  The area does not have wilderness character.

Prepared by: Robert Alward  
Robert Alward, Wilderness Planner contractor

Team Members:

|  |                   |
|--|-------------------|
| <u>Steve Christensen</u>                           | <u>4-13-2009</u>  |
| Steve Christensen, Rangeland Management Specialist | Date              |
| <u>Shaney Rockefeller</u>                          | <u>4/13/09</u>    |
| Shaney Rockefeller, Soil Scientist                 | Date              |
| <u>Dave Draheim</u>                                | <u>4.13.2009</u>  |
| Dave Draheim, Outdoor Recreation Planner           | Date              |
| <u>Jonathan Westfall</u>                           | <u>04/13/2009</u> |
| Jon Westfall, Geologist                            | Date              |
| <u>Brent Grasty</u>                                | <u>4/13/09</u>    |
| Brent Grasty, GIS Coordinator                      | Date              |

(NOTE: Previous staff members who reviewed this unit include Botanist Jean Finley (retired 7/2008), and Wildlife Biologist Technician Sandy Vistine Ambor (transferred 8/2008)).

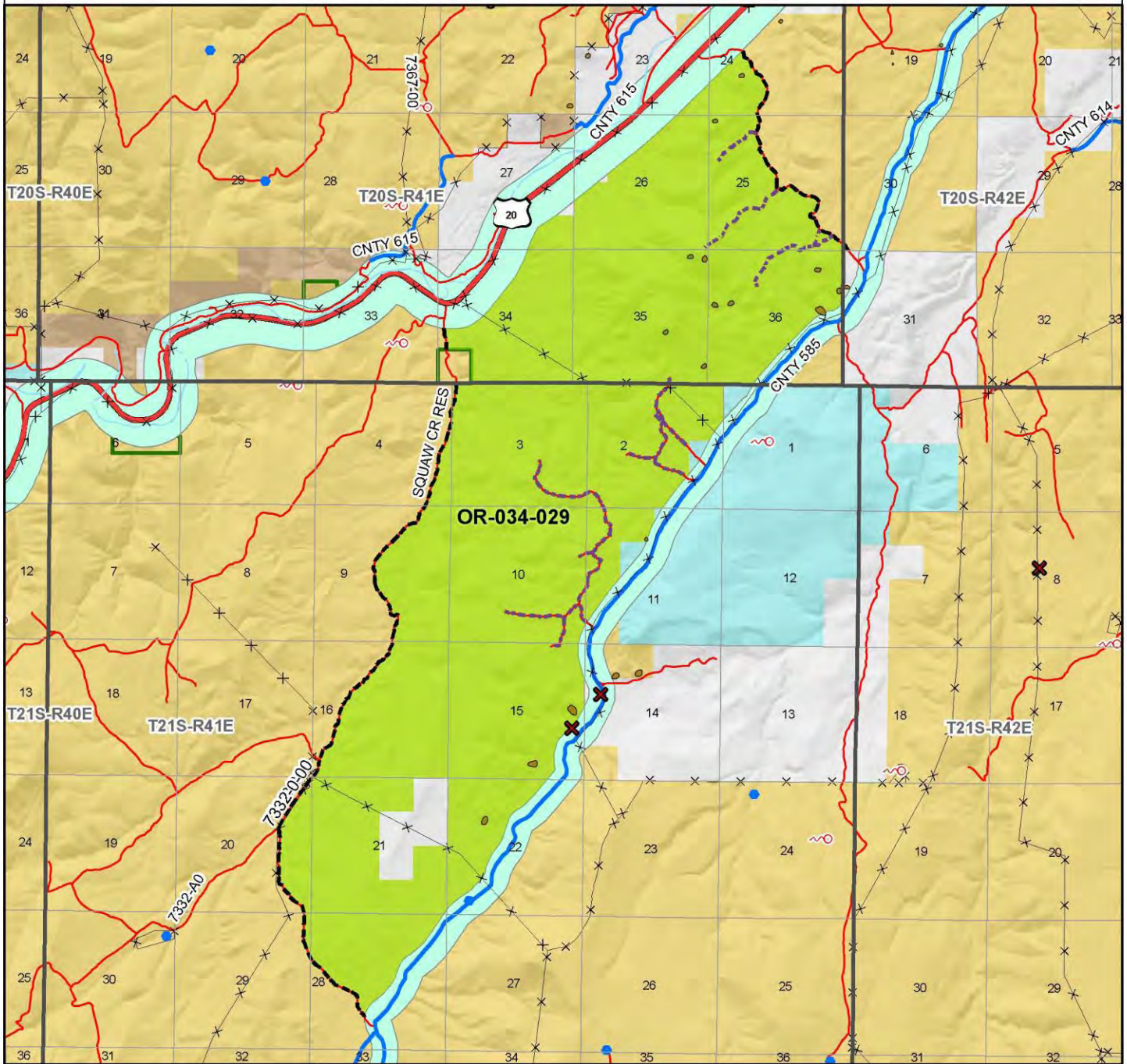
Approved by: Pat Ryan 10/15/10  
Pat Ryan, Malheur Resource Area Field Manager Date

*This form documents information that constitutes an inventory finding on wilderness characteristics. It does not represent a formal land use allocation or a final agency decision subject to administrative remedies under either 43 CFR parts 4 or 1610.5-2.*



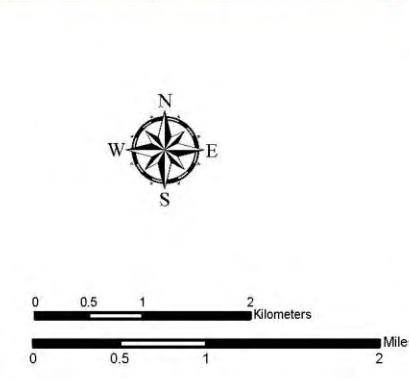
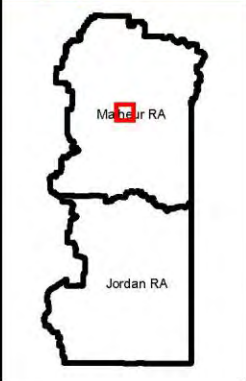
# Wilderness Characteristics - Overview

## Harper - OR-034-029 - Map 1 of 2



**Legend**

|                              |                                 |
|------------------------------|---------------------------------|
| Developed Spring             | Boundary Road                   |
| Wildlife Guzzler             | Motorized Primitive Trail (MPT) |
| Earthen Reservoir            | Discontinued Use                |
| Pipeline                     | Route - Outside Wild Char Unit  |
| Trough                       | County                          |
| Fence                        | Major Highway                   |
| Storage Tank                 | BLM Numbered & Other Routes     |
| Surface Mining Disturbance   | <b>Land Ownership</b>           |
| Sage Grouse Lek              | Bureau of Land Management       |
| Special Status Plant         | State                           |
| BLM Wild Char Inventory Unit | Private                         |
| Wilderness Study Area        | Other Federal Land              |
| Mineral Material Site        |                                 |
| Road/Utility Right-of-Way    |                                 |
| Major Water Body             |                                 |



**U.S. DEPARTMENT OF THE INTERIOR**  
**BUREAU OF LAND MANAGEMENT**

**VALE DISTRICT**  
**March 19, 2009**

No warranty is made by the Bureau of Land Management as to the accuracy, reliability, or completeness of these data for individual or aggregate use with other data. Original data were compiled from various sources. This information may not meet National Map Accuracy Standards. This product was developed through digital means and may be updated without notification.

--DRAFT--

**Wilderness Characteristics - Land Treatments  
Harper - OR-034-029 - Map 2 of 2**

**Wilderness Characteristics - Land Treatments  
Harper - OR-034-029 - Map 2 of 2**

| OBJECTID* | NAME                | TREATMENT TYPE | SEED GROUP         | DATE |
|-----------|---------------------|----------------|--------------------|------|
| 1873      | SQUAW CREEK SEEDING | Plow/Disc      | Not Applicable     | 1966 |
| 1876      | SQUAW CREEK SEEDING | Drill Seeding  | Unknown            | 1966 |
| 2144      | SQUAW CREEK SEEDING | Plow/Disc      | Not Applicable     | 1970 |
| 2145      | SQUAW CREEK SEEDING | Drill Seeding  | Non-native Grasses | 1970 |

Note: The Land Treatments represented by many blue dots on the map to the left are labeled with the treatments. ObjectIDs listed in the first field of the Land Treatments table shown above. Multiple types of treatments may have been applied to the same area. For example, one treatment area may have been plowed and drill seeded - a record is shown in the table for each type of treatment.

