

Wilderness Inventory Unit Index of Documents
Hardin OR-036-073, 11 total pages

Page 1: Index Cover Sheet

[Page 2: Form 1 – Documentation of BLM Wilderness Inventory: Findings on Record](#)

[Page 5: Form 2 – Documentation of Current Wilderness Inventory Conditions](#)

[Page 9: Form 2 – Summary of Findings and Conclusion](#)

[Page 10: Wilderness Characteristics Overview–Hardin OR-036-073 Map 1 of 2](#)

[Page 11: Wilderness Characteristics-Land Treatments-Hardin OR-036-073 Map 2 of 2](#)

Prepared by:
U.S. Department of the Interior
Bureau of Land Management
Vale District Office
100 Oregon Street
Vale, Oregon 97918



H-6300-1-WILDERNESS INVENTORY MAINTENANCE IN BLM OREGON/WASHINGTON

APPENDIX B – INVENTORY AREA EVALUATION

Evaluation of Current Conditions:

- 1) Document and review the existing BLM wilderness inventory findings on file, if available, regarding the presence or absence of individual wilderness characteristics, using Form 1, below.

- 2) Consider relevant information regarding current conditions available in the office to identify and describe any changes to the existing information (use interdisciplinary (ID) team knowledge, aerial photographs, field observations, maps, etc.), and document your findings on Form 2, below.

When Citizen Information has been submitted regarding wilderness characteristics, document the submitted materials including: date of Submission; Name of District(s) and Field Office(s) Affected; Type of material Submitted (e.g. narrative, map, photo). Evaluate any submitted citizen information regarding the validity of proposed boundaries of the unit(s), the existence of roads and other boundary features, the size of the unit(s), and the presence or absence of wilderness characteristics based on relevant information available in the office (prior BLM inventories, ID team knowledge, aerial photographs, field observations, maps, etc.)

Conduct field reviews as necessary to verify information and to ascertain current conditions. Reach conclusions on current conditions including boundaries, size of areas and presence or absence of wilderness characteristics. Fully explain the basis for each conclusion on form 2, including any critical differences between BLM and citizen information.

Document your findings regarding current conditions for each inventoried area. Describe how the present conditions are similar to, or have changed from, the conditions documented in the original wilderness inventory. Document your findings on Form 2 for each inventory area. Cite to or attach data considered, including photographs, maps, GIS layers, field trip notes, project files, *etc.*

Year: 2010 Unit Number/Name: OR-036-073--Hardin

**FORM 1 -- DOCUMENTATION OF BLM WILDERNESS INVENTORY
FINDINGS ON RECORD**

1. Is there existing BLM wilderness inventory information on all or part of this area?

Yes No (If yes, and if more than one unit is within the area, list the names of those units.):

A.) Inventory Source(s) -- (X) Denotes all applicable BLM Inventory files, printed maps, or published BLM Decision documents with information pertaining to this unit.

Wilderness Inventories

- (X) 1978-1980 – BLM Wilderness Inventory Units 3-144 of OR-03-11-04 Hardin; OR-03-11-14 Zimmerman (unpublished BLM documents stored in Vale District case files)
- (X) April 1979 – *Wilderness -- Proposed Initial Inventory – Roadless Areas and Islands Which Clearly Do Not have Wilderness Characteristics, Oregon and Washington*

Wilderness Decision Documents

- (X) August 1979 – *Wilderness Review – Initial Inventory, Final Decision on Public Lands Obviously Lacking Wilderness Characteristics and Announcement of Public Lands to be Intensively Inventoried for Wilderness Characteristics, Oregon and Washington* (green document)
- (X) October 1979 – *Wilderness Review – Intensive Inventory - Oregon, Proposed Decision on the Intensive Wilderness Inventory of Selected Areas* (grey document).
- (X) March 1980 – *Wilderness Review – Intensive Inventory; Final Decisions on 30 Selected Units in Southeast Oregon and Proposed Decisions on Other Intensively Inventoried Units in Oregon and Washington* (orange document)
- (X) November 1980 - *Wilderness Inventory – Oregon and Washington, Final Intensive Inventory Decisions* (brown document)
- () November 1981 *Stateline Intensive Wilderness Inventory Final Decision, Oregon, Idaho, Nevada, Utah* (tan document).

B.) Inventory Unit Name(s)/Number(s)

BLM 3-144 of OR-03-11-04 Hardin; OR-03-11-14 Zimmerman

C.) Map Name(s)/Number(s)

- (X) Final Decision – Initial Wilderness Inventory Map, August 1979, Oregon
- (X) Proposed Decision -- Intensive Wilderness Inventory of Selected Areas Map, October 1979, Oregon
- (X) Intensive Wilderness Inventory Map, March 1980, Oregon
- (X) Intensive Wilderness Inventory --Final Decisions Map, November 1980, Oregon.
- () November, 1981 *Stateline Intensive Wilderness Inventory Final Decision, Oregon, Idaho, Nevada, Utah* (tan document).

D.) BLM District(s)/Field Office(s)

Vale District Office

Jordan Field Office

2. BLM Inventory Findings on Record

(Existing inventory information regarding wilderness characteristics (if more than one BLM inventory unit is associated with the area, list each unit and answer each question individually for each inventory unit):

Inventory Source: See above.

Unit# / Name	Size (historic acres)	Natural Condition? Y/N	Outstanding Solitude? Y/N	Outstanding Primitive & Unconfined Recreation? Y/N	Supplemental Values? Y/N
3-144 of OR-03-11-04 Hardin	21,200	Y	N	N	Y
OR-03-11-14 Zimmerman	2,300	*	*	*	*
TOTAL	24,500				

* Determinations for these criteria were not described for these inventory units.

H-6300-1-WILDERNESS INVENTORY MAINTENANCE IN BLM OREGON/WASHINGTON

APPENDIX B – INVENTORY AREA EVALUATION

Evaluation of Current Conditions:

- 1) Document and review the existing BLM wilderness inventory findings on file, if available, regarding the presence or absence of individual wilderness characteristics, using Form 1, below.

- 2) Consider relevant information regarding current conditions available in the office to identify and describe any changes to the existing information (use interdisciplinary (ID) team knowledge, aerial photographs, field observations, maps, etc.), and document your findings on Form 2, below.

When Citizen Information has been submitted regarding wilderness characteristics, document the submitted materials including: date of Submission; Name of District(s) and Field Office(s) Affected; Type of material Submitted (e.g. narrative, map, photo). Evaluate any submitted citizen information regarding the validity of proposed boundaries of the unit(s), the existence of roads and other boundary features, the size of the unit(s), and the presence or absence of wilderness characteristics based on relevant information available in the office (prior BLM inventories, ID team knowledge, aerial photographs, field observations, maps, etc.)

Conduct field reviews as necessary to verify information and to ascertain current conditions. Reach conclusions on current conditions including boundaries, size of areas and presence or absence of wilderness characteristics. Fully explain the basis for each conclusion on form 2, including any critical differences between BLM and citizen information.

Document your findings regarding current conditions for each inventoried area. Describe how the present conditions are similar to, or have changed from, the conditions documented in the original wilderness inventory. Document your findings on Form 2 for each inventory area. Cite to or attach data considered, including photographs, maps, GIS layers, field trip notes, project files, *etc.*

FORM 2 -- DOCUMENTATION OF CURRENT WILDERNESS INVENTORY CONDITIONS

Unit Number/Name – OR-036-073—Hardin

Description of Current Conditions: [Include land ownership, location, topography, vegetation features and summary of major human uses/activities.]

1. Is the unit of sufficient size?

Yes No

Description: Refer to this inventory unit's associated Map 1 for its location. The 25,744 acre unit was included as part of the original BLM unit 3-144 of OR-03-11-04 Hardin and OR-03-11-14 Zimmerman of the latter 1970's meeting the size criteria. Acreage for unit OR-036-073 in Form 2 is calculated from BLM GIS information. The 1,244 acre difference from Form 1 occurs because the unit was determined by the current inventory to have a new boundary on the northeast side and includes 840 acres of state land inventoried for wilderness characteristics that was in the process of being transferred into BLM ownership during the initial inventory of 1978. The transfer was completed and the acreage is now under BLM management. The remaining 404 acre difference from Form 1 was either not calculated properly or resulted from a rounding error from methods and maps used in the initial 1978 inventory.

The northeast boundary has slightly changed over time because of wildland range fires and rangeland rehabilitation in surrounding areas over the past thirty years. The road that forms the northeast boundary was once a motorized trail in the 1970's inventory. Because of increased use to control wildfires and rehabilitate burnt landforms the route has since been graded and mechanically maintained and is reclassified as a road and now qualifies as a boundary for the new unit. The unit boundary on the north consists of BLM road 6378-0-00, four non-numbered road segments, and private property, the west boundary is BLM road 6378-0-00, two non-numbered roads, and private property, the south boundary is BLM road 6359-0-00, and the east boundary is BLM road 6359-0-00, a non-numbered road segment, and a mineral material right-of-way. The natural-surfaced boundary roads receive mechanical maintenance as needed to keep them passable on a regular and continuous (seasonal) basis.

2. Is the unit in a natural condition?

Yes No N/A

Description: The unit is dominated by low profiled rolling hills and extended nearly flat terrain. Elevations range from 3,729 feet to 4,130 feet, with the upper elevations located mostly in the unit's southern sector. The unit's small drainages flow mostly toward the northwest and north into Dry Creek that runs along the unit's northern boundary. All drainage from these streams eventually flows westward to Crooked Creek. Vegetation c

consists predominately of big and low sagebrush with both native and non-native grass species.

Refer to this inventory unit's associated Map 1 and Map 2 for its human developments. Human imprints within the unit include 10.6 miles of 4 motorized primitive trails, 14.7 miles of fenceline, 0.3 miles of 2 pipeline systems with 4 troughs, one developed spring, one water well with trough, one mineral material site right-of-way, and one fenced enclosure. There is remnant visual evidence of one (1.8 miles) discontinued vehicle route. The unit is also affected by a portion of the Jackies Butte Wild Horse Herd Management Area.

Additionally, there have been 18 vegetation manipulation (implemented 1962-2006) projects within the unit, none which presently have noticeable linear manmade contrasts over the terrain created at the time of furrowed disc seeding following wildfires. Vegetation treatments numbers include both the vegetation alteration treatment and the reseeding operation to rehabilitate the vegetation alteration. Much of this unit has repeatedly been subject to multiple wildfires over the past five decades. The repeated fires which have affected a majority of the unit has created a present circumstance by which an average visitor can more so readily view the developments described above, aided also by the largely flat to near flat terrain which has been historically burned.

In summary, due to the number readily observable intrusions and their proximity to each other, the works of man are substantially noticeable. Overall, unit OR-036-073 appears to be primarily affected by the influences of man with the imprint of humans noticeable to the average visitor.

3. Does the unit have outstanding opportunities for solitude?

Yes _____ No N/A _____

Description: Unit OR-036-073 is an irregular rectangle shape approximately 8.0 miles across in length and about 5.5 miles in width. The majority of the unit consists of flat to rolling open sagebrush plains in the southern two-thirds while the remaining portion consists of dissected terraces. Because of the numerous historic wildfires and 18 vegetation manipulations throughout the unit, the majority of the natural occurring shrub component has vanished throughout the unit. Over time wildfire has decreased any possibility of vegetative screening providing opportunities for solitude. The area containing the dissected terraces provides the majority of variation in topographic relief in the unit. These terraces rise about 100 feet above the Dry Creek drainage to the north. Topographic relief is minimal within the unit with elevations ranging from about 3,729 feet mean sea level (msl) at the southwest point of the triangle, rising to 4,130 feet msl along the north boundary tip. The unit's shape combined with the lack of both vegetative screening and sufficient topographic diversity, precludes outstanding opportunities for solitude. BLM concludes that unit OR-036-073 does not provide outstanding opportunities for solitude.

4. Does the unit have outstanding opportunities for primitive and unconfined recreation?Yes _____ No N/A _____

Description: The most dominate dispersed recreation activity of the area is hunting of game species (primarily deer, chukar and antelope). Horseback riding and hiking are hunt-associated activities. A visitor may occasionally view wild horses within the unit. The unit is affected by a portion of the Jackies Butte Wild Horse Herd Management Area and a small acreage of the Jackies Butte Wild Horse Herd Area in the extreme northeast portion of the unit. While a less common and interesting viewing experience, wild horses are not considered to be an outstanding primitive and unconfined recreational experience. Recreational pursuits within the area, individually or collectively, are not outstanding in character or nature. BLM concludes that unit OR-036-073 does not provide outstanding opportunities for primitive and unconfined recreation.

5. Does the unit have supplemental values?Yes _____ No N/A _____**Description:**

Summary of Findings and Conclusion

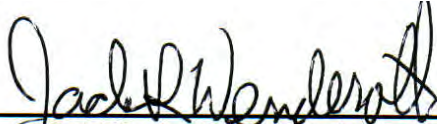
Unit Name and Number: OR-036-073—Hardin

Summary Results of Analysis:

- 1. Does the area meet any of the size requirements? Yes No
- 2. Does the area appear to be natural? Yes No
- 3. Does the area offer outstanding opportunities for solitude or a primitive and unconfined type of recreation? Yes No NA
- 4. Does the area have supplemental values? Yes No NA

Conclusion -- check one:

- The area, or a portion of the area, has wilderness character.
- The area does not have wilderness character.

Prepared by:  3/3/10
 Jack Wenderoth, Planning Contractor

Team Members:

<u></u>	<u>3/19/2010</u>
Richard White, Rangeland Management Specialist	Date
<u></u>	<u>2/10/10</u>
Dave Draheim, Outdoor Recreation Planner	Date
<u></u>	<u>3/23/2010</u>
Garth Ross, Wildlife Biologist	Date
<u></u>	<u>3-4-2010</u>
Jon Sadowski, Environmental Contractor	Date
<u></u>	<u>03/08/10</u>
Eian Ray, GIS Specialist, Contractor	Date
<u></u>	<u>3/19/10</u>
Brent Grasty, GIS Coordinator	Date

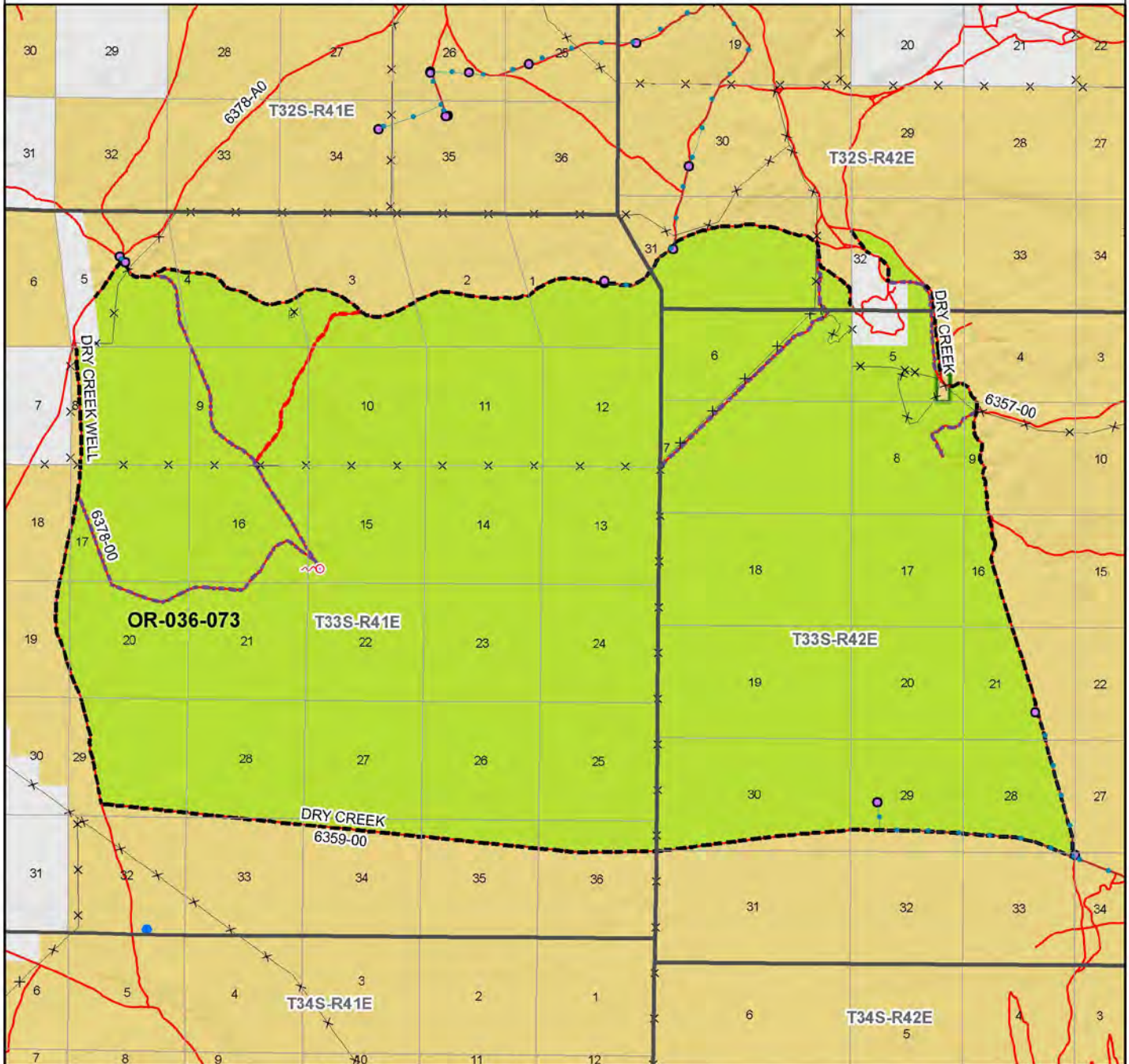
Approved by:

 4/6/10
 Carolyn Freeborn, Jordan Resource Area Field Manager Date

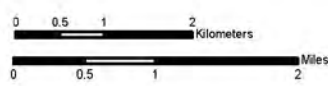
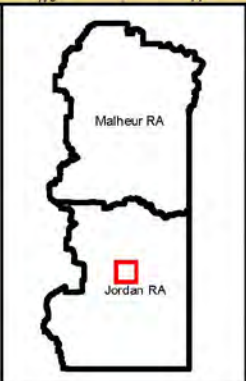
This form documents information that constitutes an inventory finding on wilderness characteristics. It does not represent a formal land use allocation or a final agency decision subject to administrative remedies under either 43 CFR parts 4 or 1610.5-2.

Wilderness Characteristics - Overview

Hardin - OR-036-073 - Map 1 of 2



- Legend**
- S Developed Spring
 - ▲ Wildlife Guzzler
 - Earthen Reservoir
 - Pipeline
 - Trough
 - x Fence
 - ◆ Storage Tank
 - x Surface Mining Disturbance
 - ▲ Sage Grouse Lek
 - ▲ Special Status Plant
 - BLM Wild Char Inventory Unit
 - Wilderness Study Area
 - Mineral Material Site
 - Road/Utility Right-of-Way
 - Major Water Body
- Route Types - BLM Determination**
- Boundary Road
 - Motorized Primitive Trail (MPT)
 - Discontinued Use
- Routes - Outside Wild Char Unit**
- County
 - Major Highway
 - BLM Numbered & Other Routes
- Land Ownership**
- Bureau of Land Management
 - State
 - Private
 - Other Federal Land



U.S. DEPARTMENT OF THE INTERIOR
BUREAU OF LAND MANAGEMENT



VALE DISTRICT
February 15, 2010

No warranty is made by the Bureau of Land Management as to the accuracy, reliability, or completeness of these data for individual or aggregate use with other data. Original data were compiled from various sources. This information may not meet National Map Accuracy Standards. This product was developed through digital means and may be updated without notification.

--FINAL--

