

Wilderness Inventory Unit Index of Documents  
**Goodyear OR-036-082, 11 total pages**

Page 1: Index Cover Sheet

[Page 2: Form 1 – Documentation of BLM Wilderness Inventory: Findings on Record](#)

[Page 5: Form 2 – Documentation of Current Wilderness Inventory Conditions](#)

[Page 9: Form 2 – Summary of Findings and Conclusion](#)

[Page 10: Wilderness Characteristics Overview – Goodyear OR-036-082 Map 1 of 2](#)

[Page 11: Wilderness Characteristics -Land Treatments- Goodyear OR-036-082 Map 2 of 2](#)

**Prepared by:**  
**U.S. Department of the Interior**  
**Bureau of Land Management**  
**Vale District Office**  
**100 Oregon Street**  
**Vale, Oregon 97918**



## **H-6300-1-WILDERNESS INVENTORY MAINTENANCE IN BLM OREGON/WASHINGTON**

### **APPENDIX B – INVENTORY AREA EVALUATION**

#### **Evaluation of Current Conditions:**

- 1) Document and review the existing BLM wilderness inventory findings on file, if available, regarding the presence or absence of individual wilderness characteristics, using Form 1, below.
- 2) Consider relevant information regarding current conditions available in the office to identify and describe any changes to the existing information (use interdisciplinary (ID) team knowledge, aerial photographs, field observations, maps, etc.), and document your findings on Form 2, below.

When Citizen Information has been submitted regarding wilderness characteristics, document the submitted materials including: date of Submission; Name of District(s) and Field Office(s) Affected; Type of material Submitted (e.g. narrative, map, and photos). Evaluate any submitted citizen information regarding the validity of proposed boundaries of the unit(s), the existence of roads and other boundary features, the size of the unit(s), and the presence or absence of wilderness characteristics based on relevant information available in the office (prior BLM inventories, ID team knowledge, aerial photographs, field observations, maps, etc.)

Conduct field reviews as necessary to verify information and to ascertain current conditions. Reach conclusions on current conditions including boundaries, size of areas and presence or absence of wilderness characteristics. Fully explain the basis for each conclusion on form 2, including any critical differences between BLM and citizen information.

Document your findings regarding current conditions for each inventoried area. Describe how the present conditions are similar to, or have changed from, the conditions documented in the original wilderness inventory. Document your findings on Form 2 for each inventory area. Cite to or attach data considered, including photographs, maps, GIS layers, field trip notes, project files, *etc.*

Year: 2011 Unit Number/Name: OR-036-082--Goodyear

**FORM 1 -- DOCUMENTATION OF BLM WILDERNESS INVENTORY  
FINDINGS ON RECORD**

**1. Is there existing BLM wilderness inventory information on all or part of this area?**

Yes  No  (If yes, and if more than one unit is within the area, list the names of those units.):

**A.) Inventory Source(s) -- (X)** Denotes all applicable BLM Inventory files, printed maps, or published BLM Decision documents with information pertaining to this unit.

**Wilderness Inventories**

- 1978 – 1980 -- BLM Wilderness Inventory Units OR-03-09-23-Goodyear; OR-03-09-28-Barlow; OR-03-09-34-Cowgill 3-125; OR-03-09-26 TR; OR-03-09-27 Well. (unpublished BLM documents stored in Vale District case files)
- April 1979 – *Wilderness -- Proposed Initial Inventory – Roadless Areas and Islands Which Clearly Do Not have Wilderness Characteristics, Oregon and Washington*

**Wilderness Decision Documents**

- August 1979 – *Wilderness Review – Initial Inventory, Final Decision on Public Lands Obviously Lacking Wilderness Characteristics and Announcement of Public Lands to be Intensively Inventoried for Wilderness Characteristics, Oregon and Washington* (green document)
- October 1979 – *Wilderness Review – Intensive Inventory - Oregon, Proposed Decision on the Intensive Wilderness Inventory of Selected Areas* (grey document).
- March 1980 – *Wilderness Review – Intensive Inventory; Final Decisions on 30 Selected Units in Southeast Oregon and Proposed Decisions on Other Intensively Inventoried Units in Oregon and Washington* (orange document)
- November 1980 - *Wilderness Inventory – Oregon and Washington, Final Intensive Inventory Decisions* (brown document)
- November 1981 *Stateline Intensive Wilderness Inventory Final Decision, Oregon, Idaho, Nevada, Utah* (tan document).

**B.) Inventory Unit Name(s)/Number(s)**

BLM OR-03-09-23-Goodyear; OR-03-09-28-Barlow; OR-03-09-34-Cowgill  
OR-03-09-26 TR; OR-03-09-27 Well.

**C.) Map Name(s)/Number(s)**

- Final Decision – Initial Wilderness Inventory Map, August 1979, Oregon
- Proposed Decision -- Intensive Wilderness Inventory of Selected Areas Map, October 1979, Oregon
- Intensive Wilderness Inventory Map, March 1980, Oregon
- Intensive Wilderness Inventory --Final Decisions Map, November 1980, Oregon.
- November, 1981 *Stateline Intensive Wilderness Inventory Final Decision, Oregon, Idaho, Nevada, Utah* (tan document).

**D.) BLM District(s)/Field Office(s)**

Vale District Office

Jordan Field Office

**2. BLM Inventory Findings on Record**

(Existing inventory information regarding wilderness characteristics (if more than one BLM inventory unit is associated with the area, list each unit and answer each question individually for each inventory unit):

**Inventory Source:** See above.

Unit#/Name	Size (historic acres)	Natural Condition? Y/N	Outstanding Solitude? Y/N	Outstanding Primitive & Unconfined Recreation? Y/N	Supplemental Values? Y/N
OR-03-09-23 Goodyear	3,540	*	*	*	*
OR-03-09-28 Barlow	1,000	*	*	*	*
OR-03-09-34 Cowgill	4,440	*	*	*	*
OR-03-09-26 TR	560	*	*	*	*
OR-03-09-67 Well	1,040	*	*	*	*
<b>TOTAL</b>	10,580				

\*-These criteria were not addressed during the inventory of this unit.

## **H-6300-1-WILDERNESS INVENTORY MAINTENANCE IN BLM OREGON/WASHINGTON**

### **APPENDIX B – INVENTORY AREA EVALUATION**

#### **Evaluation of Current Conditions:**

1) Document and review the existing BLM wilderness inventory findings on file, if available, regarding the presence or absence of individual wilderness characteristics, using Form 1, below.

2) Consider relevant information regarding current conditions available in the office to identify and describe any changes to the existing information (use interdisciplinary (ID) team knowledge, aerial photographs, field observations, maps, etc.), and document your findings on Form 2, below.

When Citizen Information has been submitted regarding wilderness characteristics, document the submitted materials including: date of Submission; Name of District(s) and Field Office(s) Affected; Type of material Submitted (e.g. narrative, map, photo). Evaluate any submitted citizen information regarding the validity of proposed boundaries of the unit(s), the existence of roads and other boundary features, the size of the unit(s), and the presence or absence of wilderness characteristics based on relevant information available in the office (prior BLM inventories, ID team knowledge, aerial photographs, field observations, maps, etc.)

Conduct field reviews as necessary to verify information and to ascertain current conditions. Reach conclusions on current conditions including boundaries, size of areas and presence or absence of wilderness characteristics. Fully explain the basis for each conclusion on form 2, including any critical differences between BLM and citizen information.

Document your findings regarding current conditions for each inventoried area. Describe how the present conditions are similar to, or have changed from, the conditions documented in the original wilderness inventory. Document your findings on Form 2 for each inventory area. Cite to or attach data considered, including photographs, maps, GIS layers, field trip notes, project files, *etc.*

## **FORM 2 -- DOCUMENTATION OF CURRENT WILDERNESS INVENTORY CONDITIONS**

**Unit Number/Name – OR-036-082—Goodyear**

---

**Description of Current Conditions:** [Include land ownership, location, topography, vegetation features and summary of major human uses/activities.]

### **1. Is the unit of sufficient size?**

Yes  No

**Description:** Refer to this inventory unit's associated Map 1 for its location. The boundary of the 8,521 acre unit is nearly the same as the three BLM inventory units of OR-03-09-23, 28, and 34 during the 1970's meeting the size criteria. The only difference being the exclusion of utility corridor right-of-way widths for County Road 697 and U.S. highway 95, and one mineral material site right-of ways associated with the county road. Acreage for unit OR-036-082 in Form 2 is calculated from BLM GIS information. The remaining 478 acre difference from Form 1 is the acreage contained within the utility corridors and mineral material site rights-of-way. The unit is bounded on its southwest and west side by County Road 696, BLM Road 7300-0-00, BLM Road 7335-0-00, and a short length of an un-numbered BLM Road, on its north side by one mineral material site right-of-way, and the utility corridor right-of-way of County Road 697, on its east side by the utility corridor right-of-way for U.S. Highway 95, and on the south side by private land parcels. The natural-surfaced roads are in reasonably good passable condition when not water saturated, receiving a measure of mechanical maintenance as needed to keep them passable for regular and continuous (seasonal) basis.

### **2. Is the unit in a natural condition?**

Yes  No  N/A

**Description:** The unit is dominated by an east to west linear row of low hills throughout the central portion of the unit. The remaining areas of the unit consist of two sloping benches either to the north or south of the row of hills. Drainage from the northern bench flows mostly through agricultural farm land and then into Cow Creek while drainage from the southern bench flows through agricultural farm land and then into Jordan Creek. Elevation differences within the unit range from 4,381 feet to 4,838 feet, with the upper elevations located in the unit's central sector. Vegetation throughout the unit consists predominately of big and low sagebrush with both native and non-native grass species.

Refer to this inventory unit's associated Map 1 and Map 2 for its human developments. They include 19.77 miles of 11 motorized primitive trails (MPT), 10.5 miles of fence line, two pipeline systems that consist of 6.9 miles of pipe and 11 troughs, 5 earthen

reservoirs, 8 vegetation manipulation treatments from 1962 through 1967, one developed water well and 4 fenced exclosures. Due to the number of intrusions, particularly the interlaced WPTs, fence lines, and pipelines, their proximity to each other, and the lack of topographic and vegetative screening, the works of man are substantially noticeable. BLM arrives at a different conclusion as did the 1970's inventory. Because various unit boundary roads of the 1970's are now MPTs the three 1970's units that did not meet size requirements now form unit OR-036-082. Although unit OR-036-082 meets size the evidence of man-made developments makes the unit appear to be affected primarily by the imprint of humans that are substantially noticeable to the average visitor.

### 3. Does the unit have outstanding opportunities for solitude?

Yes \_\_\_\_\_ No  N/A \_\_\_\_\_

**Description:** Refer to this inventory unit's associated Map 1 for visual of unit configuration. The majority of the unit forms a rectangle that is approximately 4 miles long and 3 miles wide with the extreme western area of the southern portion extending southward about one additional mile that tapers to a point. The unit consists of two flat to rolling sloped benches separated by a row of low hills extending along the entire length of the unit's south central area from east to west. The two benches slope to the north or south outwardly from the row of hills.

Topographic relief is minimal within the unit with elevations ranging from 4,381 feet to 4,838 feet above mean sea level. Elevation changes in most of the unit traversing from east to west or north to south are gradual. The unit lacks vegetative screening because of two non-native grass vegetation treatments that replaced native sagebrush communities approximately four decades ago in the 1960s. The broad expanses of seeded grasslands coupled with isolated pockets of remaining native low and big sagebrush in the unit limit the ability for a visitor to find seclusion. Despite the relatively large size of the unit, the unit is dissected by numerous MPTs, fence lines, and pipeline systems that lend the unit to not be conducive for providing opportunities for solitude. The sights and sounds emanating from traffic on U.S. Highway 95 detract from opportunities for solitude along entire eastern boundary of the unit. The present inventory determined the area did not have outstanding opportunities for solitude based on the proximity of U.S. Highway 95, the absence of vegetation screening, and little diversity in relief throughout the unit. Because of the reasons stated above, BLM concludes that unit OR-036-082 does not provide outstanding opportunities for solitude.

### 4. Does the unit have outstanding opportunities for primitive and unconfined recreation?

Yes \_\_\_\_\_ No  N/A \_\_\_\_\_

**Description:** Opportunities for primitive and unconfined types of recreation are available in the unit. However, opportunities for activities such as hiking, backpacking,

hunting, wildlife viewing, horseback riding and photography are not outstanding because the unit lacks scenic quality, diversity of landforms, and challenging terrain. The present inventory determined the area did not possess outstanding opportunities for primitive and unconfined recreation. Because of the reasons stated above, BLM concludes that unit OR-036-082 does not possess outstanding opportunities for primitive and unconfined recreation.

**5. Does the unit have supplemental values?**

Yes   X   No            N/A           

**Description:** BLM has documented two sage grouse leks within the unit. The bird is a BLM special status animal species.



**Summary of Findings and Conclusion**

**Unit Name and Number:** OR-036-082—Goodyear

**Summary Results of Analysis:**

- 1. Does the area meet any of the size requirements?  Yes  No
- 2. Does the area appear to be natural?  Yes  No
- 3. Does the area offer outstanding opportunities for solitude or a primitive and unconfined type of recreation?  Yes  No  NA
- 4. Does the area have supplemental values?  Yes  No  NA

**Conclusion -- check one:**

- The area, or a portion of the area, has wilderness character.
- The area does not have wilderness character.

**Prepared by:** Jack Wenderoth 4-5-11  
 Jack Wenderoth, Planning Contractor

**Team Members:**

<u>Aimee Huff</u> Aimee Huff, Rangeland Management Specialist	<u>4/5/2011</u> Date
<u>Eian Ray</u> Eian Ray, GIS Specialist, Contractor	<u>4-5-11</u> Date
<u>Garth R. Ross</u> Garth Ross, Wildlife Biologist	<u>4/5/2011</u> Date
<u>Brent Grasty</u> Brent Grasty, GIS Coordinator	<u>4/5/11</u> Date

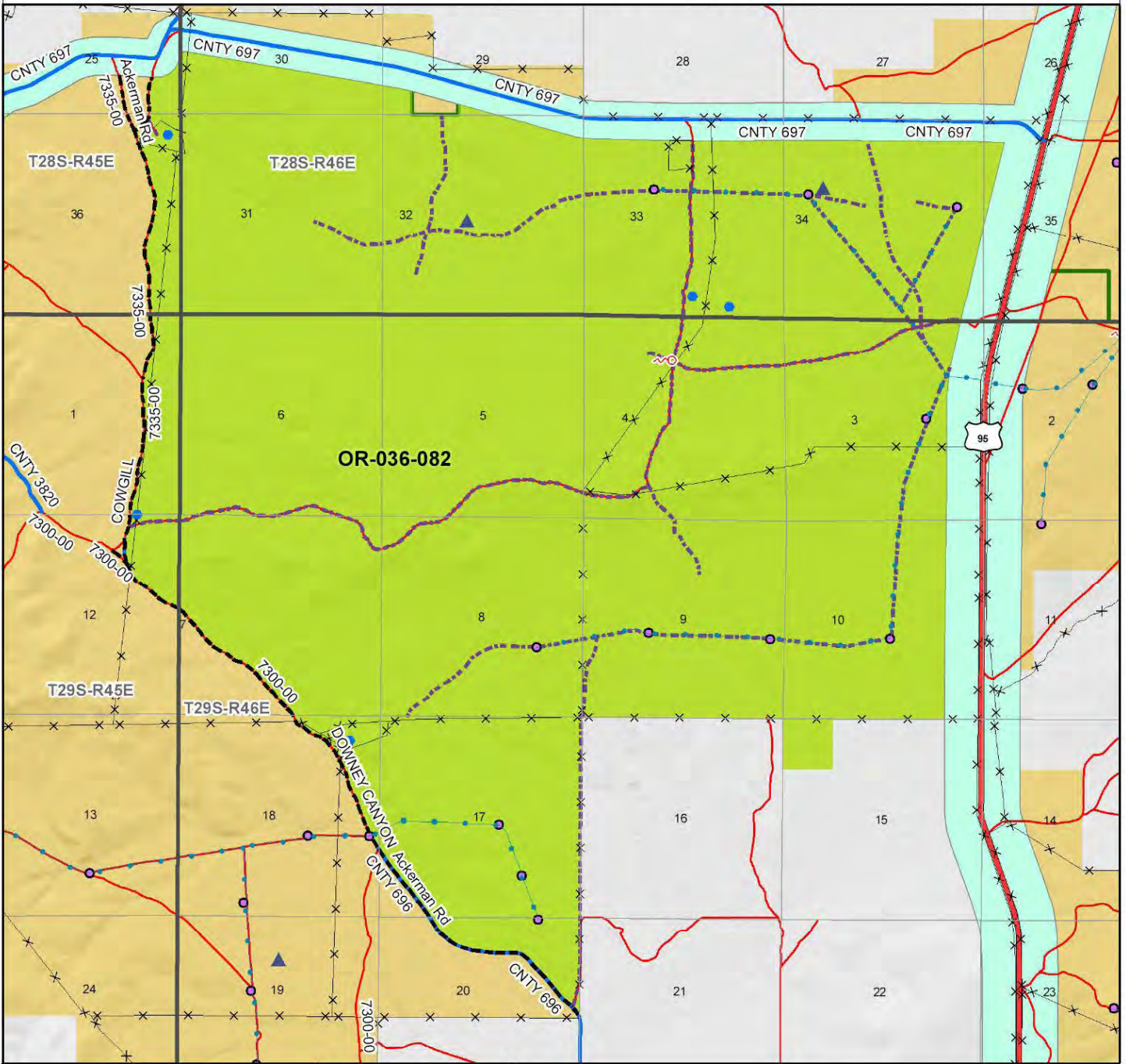
**Approved by:**

Carolyn R. Freeborn 4/5/2011  
 Carolyn Freeborn, Jordan Resource Area Field Manager Date

*This form documents information that constitutes an inventory finding on wilderness characteristics. It does not represent a formal land use allocation or a final agency decision subject to administrative remedies under either 43 CFR parts 4 or 1610.5-2.*

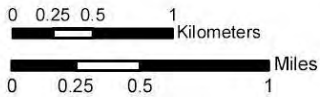
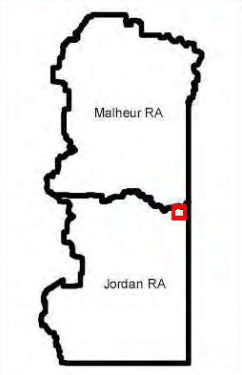
# Wilderness Characteristics - Overview

## Goodyear - OR-036-082 - Map 1 of 2



**Legend**

<ul style="list-style-type: none"> <li> Developed Spring</li> <li> Wildlife Guzzler</li> <li> Earthen Reservoir</li> <li> Pipeline</li> <li> Trough</li> <li> Fence</li> <li> Storage Tank</li> <li> Surface Mining Disturbance</li> <li> Sage Grouse Lek</li> <li> Special Status Plant</li> <li> BLM Wild Char Inventory Unit</li> <li> Wilderness Study Area</li> <li> Mineral Material Site</li> <li> Road/Utility Right-of-Way</li> <li> Major Water Body</li> </ul>	<p><b>Route Types - BLM Determination</b></p> <ul style="list-style-type: none"> <li> Boundary Road</li> <li> Motorized Primitive Trail (MPT)</li> <li> Discontinued Use</li> </ul> <p><b>Routes - Outside Wild Char Unit</b></p> <ul style="list-style-type: none"> <li> County</li> <li> Major Highway</li> <li> BLM Numbered &amp; Other Routes</li> </ul> <p><b>Land Ownership</b></p> <ul style="list-style-type: none"> <li> Bureau of Land Management</li> <li> State</li> <li> Private</li> <li> Other Federal Land</li> </ul>
---	--



U.S. DEPARTMENT OF THE INTERIOR  
BUREAU OF LAND MANAGEMENT



**VALE DISTRICT**  
March 17, 2011

No warranty is made by the Bureau of Land Management as to the accuracy, reliability, or completeness of these data for individual or aggregate use with other data. Original data were compiled from various sources. This information may not meet National Map Accuracy Standards. This product was developed through digital means and may be updated without notification.

--FINAL--



