

Wilderness Inventory Unit Index of Documents  
**Flat Top Mountain OR-036-022, 10 total pages**

Page 1: Index Cover Sheet

[Page 2: Form 1 – Documentation of BLM Wilderness Inventory: Findings on Record](#)

[Page 5: Form 2 – Documentation of Current Wilderness Inventory Conditions](#)

[Page 9: Form 2 – Summary of Findings and Conclusion](#)

[Page 10: Wilderness Characteristics Overview–Flat Top Mountain OR-036-022 Map 1](#)

**Prepared by:**  
**U.S. Department of the Interior**  
**Bureau of Land Management**  
**Vale District Office**  
**100 Oregon Street**  
**Vale, Oregon 97918**



## **H-6300-1-WILDERNESS INVENTORY MAINTENANCE IN BLM OREGON/WASHINGTON**

### **APPENDIX B – INVENTORY AREA EVALUATION**

#### **Evaluation of Current Conditions:**

- 1) Document and review the existing BLM wilderness inventory findings on file, if available, regarding the presence or absence of individual wilderness characteristics, using Form 1, below.
- 2) Consider relevant information regarding current conditions available in the office to identify and describe any changes to the existing information (use interdisciplinary (ID) team knowledge, aerial photographs, field observations, maps, etc.), and document your findings on Form 2, below.

When Citizen Information has been submitted regarding wilderness characteristics, document the submitted materials including: date of Submission; Name of District(s) and Field Office(s) Affected; Type of material Submitted (e.g. narrative, map, photo). Evaluate any submitted citizen information regarding the validity of proposed boundaries of the unit(s), the existence of roads and other boundary features, the size of the unit(s), and the presence or absence of wilderness characteristics based on relevant information available in the office (prior BLM inventories, ID team knowledge, aerial photographs, field observations, maps, etc.)

Conduct field reviews as necessary to verify information and to ascertain current conditions. Reach conclusions on current conditions including boundaries, size of areas and presence or absence of wilderness characteristics. Fully explain the basis for each conclusion on form 2, including any critical differences between BLM and citizen information.

Document your findings regarding current conditions for each inventoried area. Describe how the present conditions are similar to, or have changed from, the conditions documented in the original wilderness inventory. Document your findings on Form 2 for each inventory area. Cite to or attach data considered, including photographs, maps, GIS layers, field trip notes, project files, *etc.*

**Year:** 2010      **Unit Number/Name:** OR-036-022 -- Flat Top Mountain

**FORM 1 -- DOCUMENTATION OF BLM WILDERNESS INVENTORY  
FINDINGS ON RECORD**

**1. Is there existing BLM wilderness inventory information on all or part of this area?**

Yes  No  (If yes, and if more than one unit is within the area, list the names of those units.):

**A.) Inventory Source(s) -- (X) Denotes all applicable BLM Inventory files, printed maps, or published BLM Decision documents with information pertaining to this unit.**

**Wilderness Inventories**

- (X) 1978 – 1980 – BLM Wilderness Inventory Unit 3-116 of OR-03-08-11 Flat Top Mountain (unpublished BLM documents stored in Vale District case files)
- (X) April 1979 – *Wilderness -- Proposed Initial Inventory – Roadless Areas and Islands Which Clearly Do Not have Wilderness Characteristics, Oregon and Washington*

**Wilderness Decision Documents**

- (X) August 1979 – *Wilderness Review – Initial Inventory, Final Decision on Public Lands Obviously Lacking Wilderness Characteristics and Announcement of Public Lands to be Intensively Inventoried for Wilderness Characteristics, Oregon and Washington* (green document)
- (X) October 1979 – *Wilderness Review – Intensive Inventory - Oregon, Proposed Decision on the Intensive Wilderness Inventory of Selected Areas* (grey document).
- (X) March 1980 – *Wilderness Review – Intensive Inventory; Final Decisions on 30 Selected Units in Southeast Oregon and Proposed Decisions on Other Intensively Inventoried Units in Oregon and Washington* (orange document)
- (X) November 1980 - *Wilderness Inventory – Oregon and Washington, Final Intensive Inventory Decisions* (brown document)
- ( ) November 1981 *Stateline Intensive Wilderness Inventory Final Decision, Oregon, Idaho, Nevada, Utah* (tan document).

**B.) Inventory Unit Name(s)/Number(s)**

BLM 3-116 of OR-03-08-11 Flat Top Mountain

**C.) Map Name(s)/Number(s)**

- (X) Final Decision – Initial Wilderness Inventory Map, August 1979, Oregon
- (X) Proposed Decision -- Intensive Wilderness Inventory of Selected Areas Map, October 1979, Oregon
- (X) Intensive Wilderness Inventory Map, March 1980, Oregon
- (X) Intensive Wilderness Inventory --Final Decisions Map, November 1980, Oregon.
- ( ) November, 1981 *Stateline Intensive Wilderness Inventory Final Decision, Oregon, Idaho, Nevada, Utah* (tan document).

**D.) BLM District(s)/Field Office(s)**

Vale District Office                      Jordan Field Office

**2. BLM Inventory Findings on Record**

(Existing inventory information regarding wilderness characteristics (if more than one BLM inventory unit is associated with the area, list each unit and answer each question individually for each inventory unit):

**Inventory Source:** See above.

<b>Unit# / Name</b>	<b>Size (historic acres)</b>	<b>Natural Condition? Y/N</b>	<b>Outstanding Solitude? Y/N</b>	<b>Outstanding Primitive &amp; Unconfined Recreation? Y/N</b>	<b>Supplemental Values? Y/N</b>
3-116 of OR-03-08-11 Flat Top Mountain	16,100	Y	N	N	N
<b>TOTAL</b>	16,100				

## **H-6300-1-WILDERNESS INVENTORY MAINTENANCE IN BLM OREGON/WASHINGTON**

### **APPENDIX B – INVENTORY AREA EVALUATION**

#### **Evaluation of Current Conditions:**

- 1) Document and review the existing BLM wilderness inventory findings on file, if available, regarding the presence or absence of individual wilderness characteristics, using Form 1, below.
- 2) Consider relevant information regarding current conditions available in the office to identify and describe any changes to the existing information (use interdisciplinary (ID) team knowledge, aerial photographs, field observations, maps, etc.), and document your findings on Form 2, below.

When Citizen Information has been submitted regarding wilderness characteristics, document the submitted materials including: date of Submission; Name of District(s) and Field Office(s) Affected; Type of material Submitted (e.g. narrative, map, photo). Evaluate any submitted citizen information regarding the validity of proposed boundaries of the unit(s), the existence of roads and other boundary features, the size of the unit(s), and the presence or absence of wilderness characteristics based on relevant information available in the office (prior BLM inventories, ID team knowledge, aerial photographs, field observations, maps, etc.)

Conduct field reviews as necessary to verify information and to ascertain current conditions. Reach conclusions on current conditions including boundaries, size of areas and presence or absence of wilderness characteristics. Fully explain the basis for each conclusion on form 2, including any critical differences between BLM and citizen information.

Document your findings regarding current conditions for each inventoried area. Describe how the present conditions are similar to, or have changed from, the conditions documented in the original wilderness inventory. Document your findings on Form 2 for each inventory area. Cite to or attach data considered, including photographs, maps, GIS layers, field trip notes, project files, *etc.*

## **FORM 2 -- DOCUMENTATION OF CURRENT WILDERNESS INVENTORY CONDITIONS**

**Unit Number/Name:** OR-036-022 -- Flat Top Mountain

**Description of Current Conditions:** [Include land ownership, location, topography, vegetation features and summary of major human uses/activities.]

### **1. Is the unit of sufficient size?**

Yes   X   No \_\_\_\_\_

**Description:** Refer to this inventory unit's associated Map 1 for its location. The boundary of the 17,167 acre unit is the same as the BLM inventory unit 3-116 of OR-03-08-11 Flat Top Mountain during the 1970's meeting the size criteria. Acreage for unit OR-036-022 in Form 2 is calculated from BLM GIS information. The acreage includes 379 acres of state land inventoried for wilderness characteristics that was in the process of being transferred into BLM ownership during the initial inventory of 1978. The transfer was completed and the acreage is now under BLM management. The remaining 788 acre difference from Form 1 was either not calculated properly or resulted from a rounding error from methods and maps used in the initial 1978 inventory.

The unit is bounded on its west-southwesterly side by BLM roads 6133-0-00 and 6314-0-1B0 (County Road 521), where it abuts against Alvord Desert WSA (OR-2-74) and Wildcat Canyon WSA (OR-2-72D); on its northeasterly side by BLM road 6314-0-100, partly which abuts Palomino Hills WSA (OR-3-114) and by another road traversing public lands; and its south end by private lands and County Road 525. These natural-surfaced roads are in reasonably good passable condition when not water saturated, receiving a measure of mechanical maintenance as needed to keep them passable for regular and continuous (seasonal) basis. Three private inholdings totaling 160 acres in the southern-most sector of the unit are also features of the unit's boundary.

### **2. Is the unit in a natural condition?**

Yes   X   No \_\_\_\_\_ N/A \_\_\_\_\_

**Description:** Flat Top Mountain (4,576 feet elevation) is a rim-rocked mesa located in the southern portion of the unit. The remainder of the terrain is rolling hills with elevations ranging from 4,783 feet to 3,955 feet, and with little pronounced topography except for a north-south oriented four-mile ridge system in the unit's northern-most western sector. The unit's small drainages flow mostly toward the south and east into Bone Creek and Dought Creek respectively. The remaining small drainages flow

northward into Palomino Creek. All drainage from these streams eventually flows eastward to Crooked Creek. Vegetation consists predominately of big and low sagebrush with both native and non-native grass species.

Refer to this inventory unit's associated Map 1 and Map 2 for its human developments. They include 2.1 miles of one motorized primitive trail which traverses the unit's width in its northern quarter sector and one earthen reservoir located on the unit's western boundary. The unit is also affected by a small portion of both the Sheepshead-Heath Creek and Coyote Lakes-Alvord-Tule Springs Wild Horse Herd Management Areas. Given its size relative to the minimal evidence of man-made developments, the unit appears to be affected primarily by the forces of nature with the imprint of humans substantially unnoticeable to the average visitor.

### 3. Does the unit have outstanding opportunities for solitude?

Yes \_\_\_\_\_ No  N/A \_\_\_\_\_

**Description:** The character of inventory unit 3-116 of OR-03-08-11 has not changed since the 1970's. The unit is oval shaped, measuring 9.5 miles long and 4.5 miles in width near the middle that tapers to about 1.5 miles in width at each end. While the size and shape of the unit contributes to opportunities isolate oneself from others, the unit does not offer outstanding opportunity for solitude because of the lack of secluded locations. The lack of both vegetative screening and sufficient topographic diversity limits the opportunity for solitude to only a few places. BLM concludes that unit OR-036-022 does not provide outstanding opportunities for solitude.

### 4. Does the unit have outstanding opportunities for primitive and unconfined recreation?

Yes \_\_\_\_\_ No  N/A \_\_\_\_\_

**Description:** Dispersed recreation activities include hiking, hunting (primarily deer, chukar and antelope), horseback riding, general photography and sightseeing, and backpacking. A visitor may occasionally view wild horses within the unit. The unit is affected by a small portion of both the Sheepshead-Heath Creek and Coyote Lakes-Alvord-Tule Springs Wild Horse Herd Management Areas. While a less common and interesting viewing experience, wild horses are not considered to be an outstanding primitive and unconfined recreational experience. While providing a variety of recreational pursuits, individually or collectively the opportunity to participate in and experience these activities within the unit is not outstanding. BLM concludes that unit OR-036-022 does not provide outstanding opportunities for primitive and unconfined recreation.

**5. Does the unit have supplemental values?**

Yes \_\_\_\_\_ No   X   N/A \_\_\_\_\_

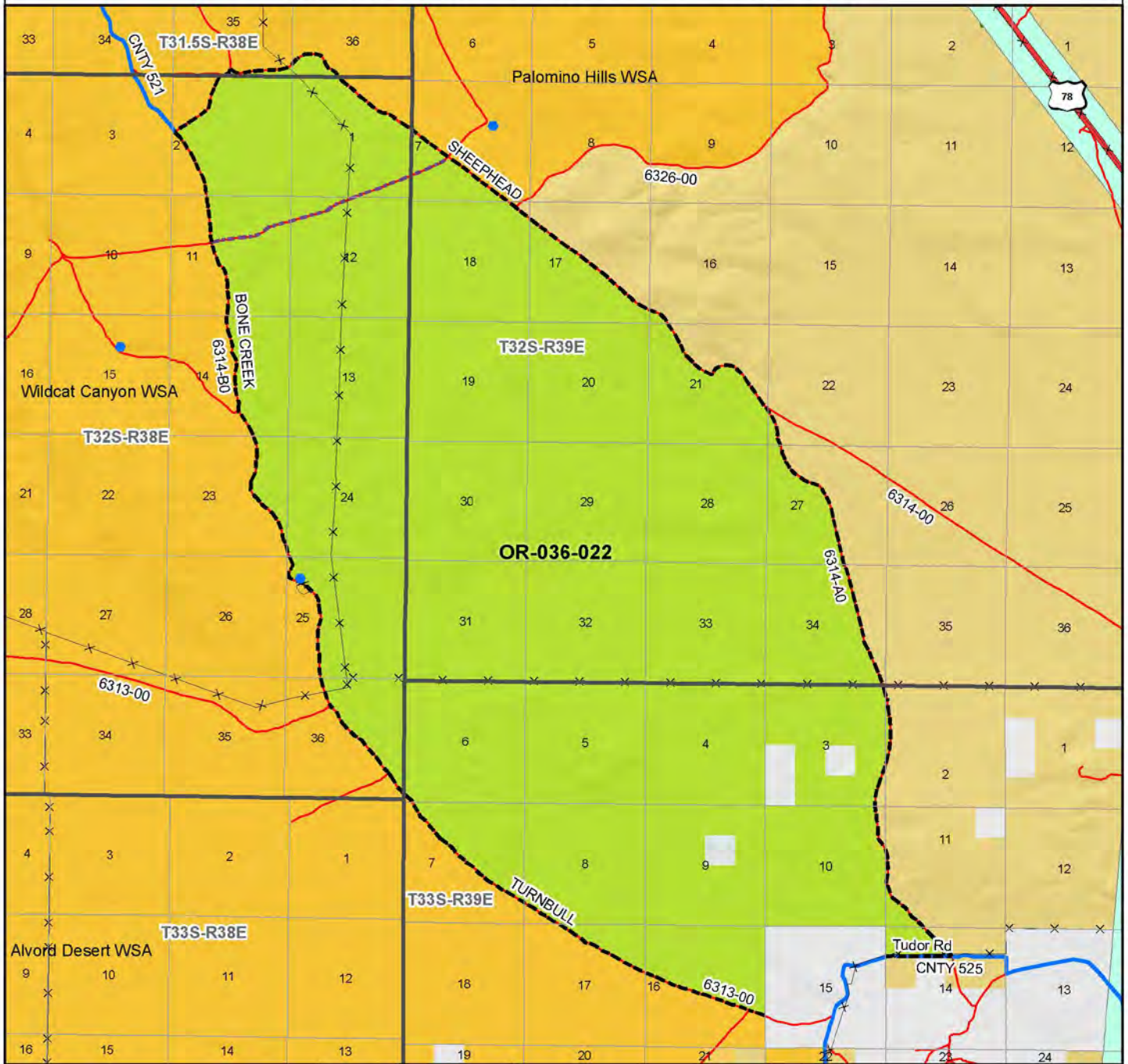
**Description:**



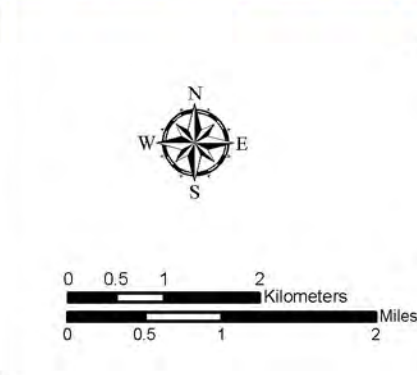
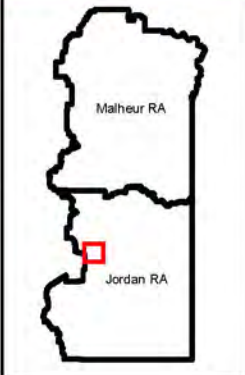


# Wilderness Characteristics - Overview

## Flat Top Mountain - OR-036-022 - Map 1 of 1



Legend	
Developed Spring	Boundary Road
Wildlife Guzzler	Mootized Primitive Trail (MPT)
Earthen Reservoir	Discontinued Use
Pipeline	<b>Routes - Outside Wild Char Unit</b>
Trough	County
Fence	Major Highway
Storage Tank	BLM Numbered & Other Routes
Surface Mining Disturbance	<b>Land Ownership</b>
Sage Grouse Lek	Bureau of Land Management
Special Status Plant	State
BLM Wild Char Inventory Unit	Private
Wilderness Study Area	Other Federal Land
Mineral Material Site	
Road/Utility Right-of-Way	
Major Water Body	



**U.S. DEPARTMENT OF THE INTERIOR**  
**BUREAU OF LAND MANAGEMENT**

**VALE DISTRICT**  
**February 15, 2010**

No warranty is made by the Bureau of Land Management as to the accuracy, reliability, or completeness of these data for individual or aggregate use with other data. Original data were compiled from various sources. This information may not meet National Map Accuracy Standards. This product was developed through digital means and may be updated without notification.

**--FINAL--**