

# MEMO

May 4, 2012

**To:** Wilderness Characteristics (WC) File – Vale District WC inventory unit  
OR-034-111 Dry Creek

**From:** Pat Ryan, Field Manager, Jordan/Malheur Resource Areas, Vale District  
Robert Alward, Wilderness Planner, contractor, Vale District *RA*

**Subject:** Vale District WC Unit combined with Boise District's WC unit ID-106-66  
Horse Spring

In March 2012, Vale District received a WC Form 2 and affiliated working maps (GIS-generated) and e-mails from the Boise District's Marsing Field Office regarding its 2012 WC inventory unit ID-106-66, Horse Spring.

As a result of this received information, Vale District's 2009 OR-034-111 Dry Creek WC inventory unit is determined to be contiguous to BLM Boise District's ID-106-66 Horse Spring WC inventory unit.

Respectively, OR-034-111 and ID-106-66 are now combined and identified as "OR-034-11, Dry Creek / ID-106-66, Horse Spring". Per Vale District's GIS data, its size is 7,807 acres (2,873 acres in Vale District [same as in 2009] and 4,934 acres in Boise District). **Refer to Vale District WC files for OR-034-111, Dry Creek / ID-106-66, Horse Spring** for combined and complete WC inventory information regarding these two contiguous WC inventory units. (Also see the attached 2012 WC inventory Map 1 and Map 2 for the current OR-034-111, Dry Creek / ID-106-66, Horse Spring unit.)

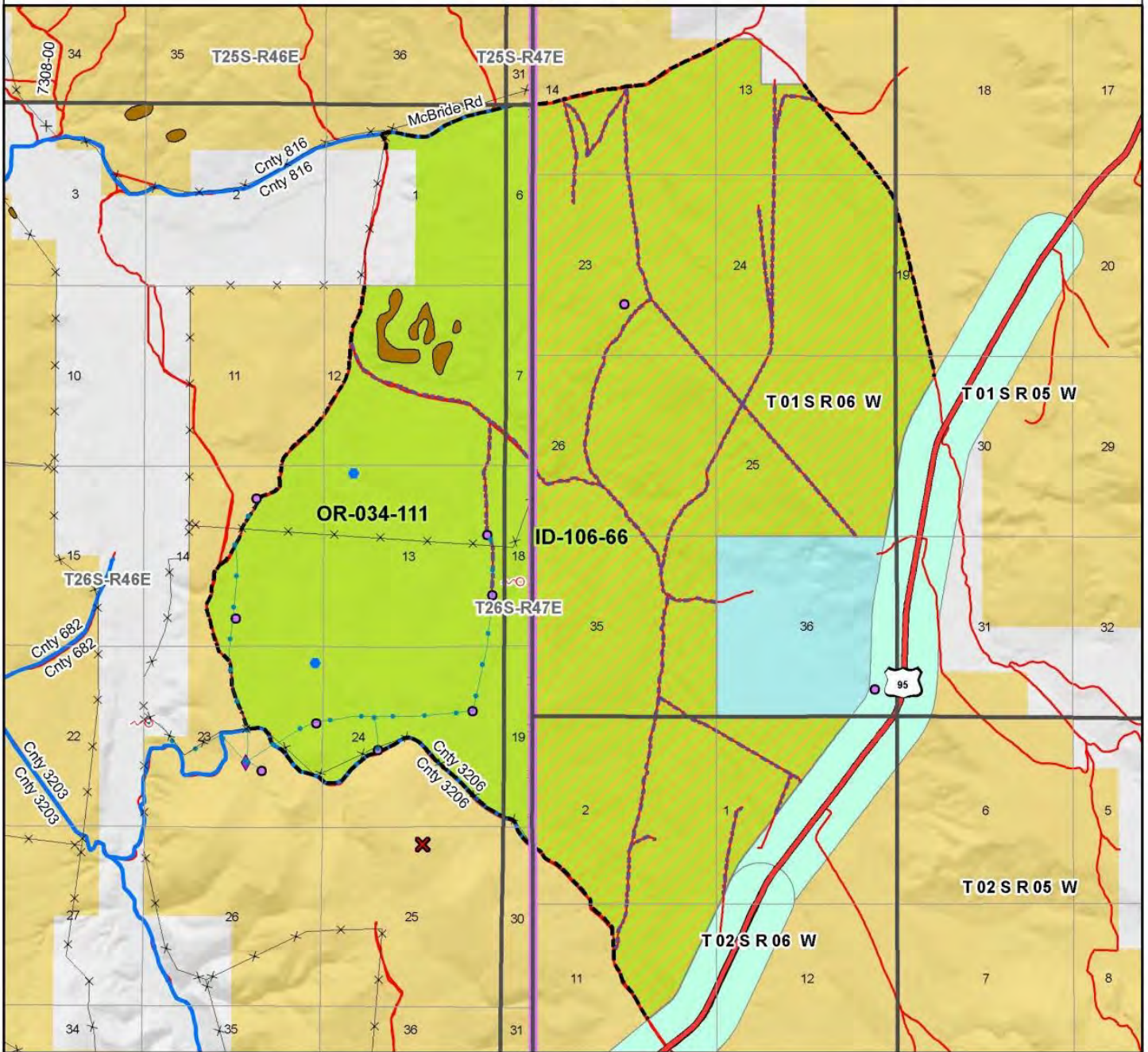
Since Vale District's 2009 WC inventory of its OR-034-111 WC unit (approved July 7, 2010), the Boise District's independent WC inventory findings for its ID-106-66 unit results in it being in concert with Vale District's WC findings relative to its OR-034-111. Specifically, ID-106-66 was found to not be in a natural condition. Furthermore, there has been no change in WC inventory condition of OR-034-111 unit since 2009; thus, currently, information provided in the district's 2009 completed Form 2 for the WC unit remains relevant and valid. Refer to the Form 2 of each of the WC units for certain additional WC inventory information.

In conclusion, as combined the contiguous OR-034-111 and ID-106-66 WC inventory units – as a whole (7,807 acres) -- does not meet the natural condition criteria; and, thus, does not meet a WC inventory requirement in order to possess wilderness character.

# Wilderness Characteristics - Land Treatments

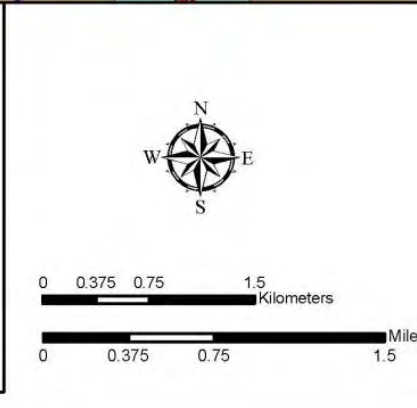
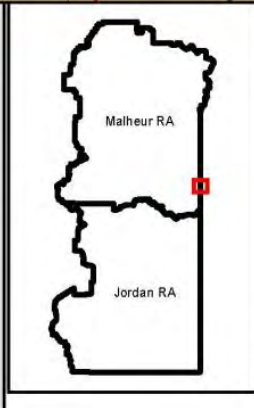
## Dry Creek, OR-034-111 / Horse Spring, ID-106-66

### Map 1 of 2



**Legend**

<ul style="list-style-type: none"> <li> Developed Spring</li> <li> Wildlife Guzzler</li> <li> Earthen Reservoir</li> <li> Pipeline</li> <li> Trough</li> <li> Fences</li> <li> Storage Tank</li> <li> Surface Mining Disturbance</li> <li> Sage Grouse Lek</li> <li> Special Status Plant</li> <li> OR Wild Char Inventory Unit</li> <li> ID Wild Char Inventory Unit</li> <li> Wilderness Study Area</li> <li> Mineral Material Site</li> <li> Road/Utility Right-of-Way</li> <li> Major Water Body</li> </ul>	<p><b>Route Types - BLM Determination</b></p> <ul style="list-style-type: none"> <li> Boundary Road</li> <li> MotORIZED Primitive Trail (MPT)</li> <li> Discontinued Use</li> </ul> <p><b>Routes - Outside Wild Char Unit</b></p> <ul style="list-style-type: none"> <li> County</li> <li> Major Highway</li> <li> BLM Numbered &amp; Other Routes</li> </ul> <p><b>Land Ownership</b></p> <ul style="list-style-type: none"> <li> Bureau of Land Management</li> <li> State</li> <li> Private</li> <li> Other Federal Land</li> <li> District Boundary</li> </ul>
---	--



**U.S. DEPARTMENT OF THE INTERIOR**  
BUREAU OF LAND MANAGEMENT

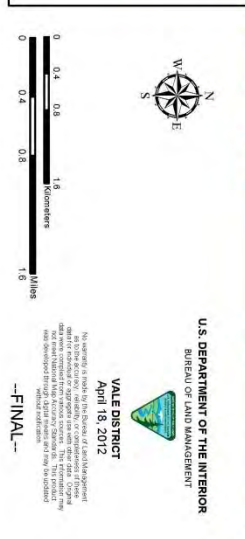
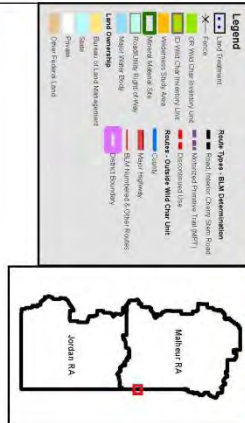
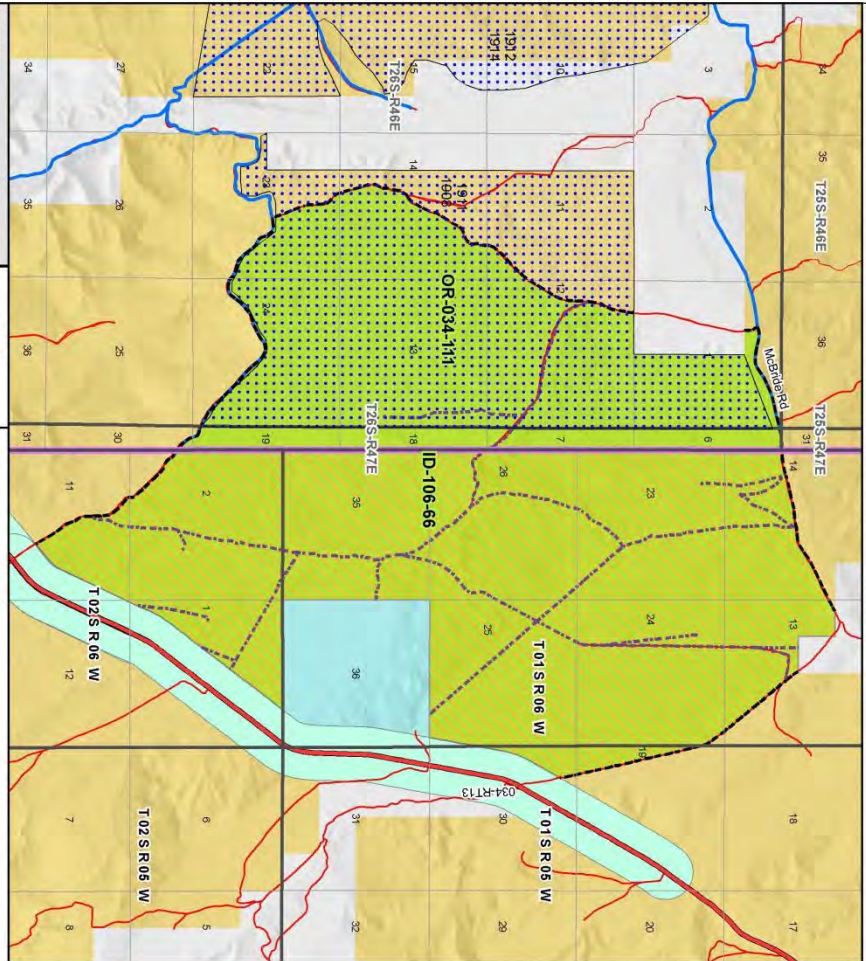
**VALE DISTRICT**  
April 18, 2012

No warranty is made by the Bureau of Land Management as to the accuracy, reliability, or completeness of these data for individual or aggregate use with other data. Original data were compiled from various sources. This information may not meet National Map Accuracy Standards. This product was developed through digital means and may be updated without notification.

**--FINAL--**



**Wilderness Characteristics - Land Treatments**  
**Dry Creek, OR-034-111 / Horse Spring, ID-106-66**  
**Map 2 of 2**



U.S. DEPARTMENT OF THE INTERIOR  
 BUREAU OF LAND MANAGEMENT  
 VALE DISTRICT  
 April 18, 2012  
 No warranty is made by the Bureau of Land Management for the use of the information contained herein for purposes not intended by the Bureau. The product is provided as a service to the public and is not intended to be used for any other purpose without authorization.  
 --FINAL--

**Wilderness Characteristics - Land Treatments**  
**Dry Creek, OR-034-111 / Horse Spring, ID-106-66**  
**Map 2 of 2**

OBJECTID*	NAME	TREATMENT TYPE	SEED GROUP	DATE
1908	ROCKVILLE SEEDING	Plow/Dec	Not Applicable	1964
1911	ROCKVILLE SEEDING	Drill Seeding	Unknown	1964

Note: The Land Treatments represented by navy blue dots on the map to the left are labeled with the treatments' ObjectIDs listed in the first field of the Land Treatments table shown above. Multiple types of treatments may have been applied to the same area. For example, one treatment area may have been plowed and drill seeded - a record is shown in the table for each type of treatment.