

Wilderness Inventory Unit Index of Documents
Disaster Peak Contiguous OR-036-094, 9 total pages

Page 1: Index Cover Sheet

[Page 2: Form 1 – Documentation of BLM Wilderness Inventory: Findings on Record](#)

[Page 5: Form 2 – Documentation of Current Wilderness Inventory Conditions](#)

[Page 8: Form 2 – Summary of Findings and Conclusion](#)

[Page 9: Wilderness Characteristics Overview–Disaster Peak Contiguous OR-036-094 Map 1](#)

**Prepared by:
U.S. Department of the Interior
Bureau of Land Management
Vale District Office
100 Oregon Street
Vale, Oregon 97918**



H-6300-1-WILDERNESS INVENTORY MAINTENANCE IN BLM OREGON/WASHINGTON

APPENDIX B – INVENTORY AREA EVALUATION

Evaluation of Current Conditions:

- 1) Document and review the existing BLM wilderness inventory findings on file, if available, regarding the presence or absence of individual wilderness characteristics, using Form 1, below.
- 2) Consider relevant information regarding current conditions available in the office to identify and describe any changes to the existing information (use interdisciplinary (ID) team knowledge, aerial photographs, field observations, maps, etc.), and document your findings on Form 2, below.

When Citizen Information has been submitted regarding wilderness characteristics, document the submitted materials including: date of Submission; Name of District(s) and Field Office(s) Affected; Type of material Submitted (e.g. narrative, map, photo). Evaluate any submitted citizen information regarding the validity of proposed boundaries of the unit(s), the existence of roads and other boundary features, the size of the unit(s), and the presence or absence of wilderness characteristics based on relevant information available in the office (prior BLM inventories, ID team knowledge, aerial photographs, field observations, maps, etc.)

Conduct field reviews as necessary to verify information and to ascertain current conditions. Reach conclusions on current conditions including boundaries, size of areas and presence or absence of wilderness characteristics. Fully explain the basis for each conclusion on form 2, including any critical differences between BLM and citizen information.

Document your findings regarding current conditions for each inventoried area. Describe how the present conditions are similar to, or have changed from, the conditions documented in the original wilderness inventory. Document your findings on Form 2 for each inventory area. Cite to or attach data considered, including photographs, maps, GIS layers, field trip notes, project files, *etc.*

Year: 2009 **Unit Number/Name:** OR-036-094 – Disaster Peak Contiguous

**FORM 1 -- DOCUMENTATION OF BLM WILDERNESS INVENTORY
FINDINGS ON RECORD**

1. Is there existing BLM wilderness inventory information on all or part of this area?

Yes No (If yes, and if more than one unit is within the area, list the names of those units.):

A.) Inventory Source(s) -- (X) Denotes all applicable BLM Inventory files, printed maps, or published BLM Decision documents with information pertaining to this unit.

Wilderness Inventories

- (X) 1978 – 1980 --- partially of BLM Wilderness Inventory Unit OR-03-12-03 (unpublished BLM document)

NOTE: Much of this unit was eventually included in the 1980 BLM designated Disaster Peak WSA.

- () April 1979 – Wilderness -- Proposed Initial Inventory – Roadless Areas and Islands Which Clearly Do Not have Wilderness Characteristics, Oregon and Washington

Wilderness Decision Documents

NOTE: Was never included in any of the below documents.

- () August 1979 – Wilderness Review – Initial Inventory, Final Decision on Public Lands Obviously Lacking Wilderness Characteristics and Announcement of Public Lands to be Intensively Inventoried for Wilderness Characteristics, Oregon and Washington (green document)
- () October 1979 – Wilderness Review – Intensive Inventory - Oregon, Proposed Decision on the Intensive Wilderness Inventory of Selected Areas (grey document).
- () March 1980 – Wilderness Review – Intensive Inventory; Final Decisions on 30 Selected Units in Southeast Oregon and Proposed Decisions on Other Intensively Inventoried Units in Oregon and Washington (orange document)
- () November 1980 - Wilderness Inventory – Oregon and Washington, Final Intensive Inventory Decisions (brown document)
- () November 1981 Stateline Intensive Wilderness Inventory Final Decision, Oregon, Idaho, Nevada, Utah (tan document).

B.) Inventory Unit Name(s)/Number(s)

partially of BLM Wilderness Inventory Unit OR-03-12-03

C.) Map Name(s)/Number(s)

NOTE: Was not identified/included on any of these maps.

- () Final Decision – Initial Wilderness Inventory Map, August 1979, Oregon
- () Proposed Decision -- Intensive Wilderness Inventory of Selected Areas Map, October 1979, Oregon
- () Intensive Wilderness Inventory Map, March 1980, Oregon
- () Intensive Wilderness Inventory --Final Decisions Map, November 1980, Oregon.
- () November, 1981 *Stateline Intensive Wilderness Inventory Final Decision, Oregon, Idaho, Nevada, Utah* (tan document).

D.) BLM District(s)/Field Office(s)

Vale District Office

Jordan Field Office

2. BLM Inventory Findings on Record

(Existing inventory information regarding wilderness characteristics (if more than one BLM inventory unit is associated with the area, list each unit and answer each question individually for each inventory unit):

Inventory Source: See above.

Unit#/ Name	Size (historic acres)	Natural Condition? Y/N	Outstanding Solitude? Y/N	Outstanding Primitive & Unconfined Recreation? Y/N	Supplemental Values? Y/N
Partially of OR-03-12-03	*	*	*	*	*
TOTAL	--				

* -- These criteria were not specifically addressed during the inventory relative to the new OR-036-094 unit.

H-6300-1-WILDERNESS INVENTORY MAINTENANCE IN BLM OREGON/WASHINGTON

APPENDIX B – INVENTORY AREA EVALUATION

Evaluation of Current Conditions:

- 1) Document and review the existing BLM wilderness inventory findings on file, if available, regarding the presence or absence of individual wilderness characteristics, using Form 1, below.
- 2) Consider relevant information regarding current conditions available in the office to identify and describe any changes to the existing information (use interdisciplinary (ID) team knowledge, aerial photographs, field observations, maps, etc.), and document your findings on Form 2, below.

When Citizen Information has been submitted regarding wilderness characteristics, document the submitted materials including: date of Submission; Name of District(s) and Field Office(s) Affected; Type of material Submitted (e.g. narrative, map, photo). Evaluate any submitted citizen information regarding the validity of proposed boundaries of the unit(s), the existence of roads and other boundary features, the size of the unit(s), and the presence or absence of wilderness characteristics based on relevant information available in the office (prior BLM inventories, ID team knowledge, aerial photographs, field observations, maps, etc.)

Conduct field reviews as necessary to verify information and to ascertain current conditions. Reach conclusions on current conditions including boundaries, size of areas and presence or absence of wilderness characteristics. Fully explain the basis for each conclusion on form 2, including any critical differences between BLM and citizen information.

Document your findings regarding current conditions for each inventoried area. Describe how the present conditions are similar to, or have changed from, the conditions documented in the original wilderness inventory. Document your findings on Form 2 for each inventory area. Cite to or attach data considered, including photographs, maps, GIS layers, field trip notes, project files, *etc.*

FORM 2 -- DOCUMENTATION OF CURRENT WILDERNESS INVENTORY CONDITIONS

Unit Number/Name: OR-036-094 – Disaster Peak Contiguous

Description of Current Conditions: [Include land ownership, location, topography, vegetation features and summary of major human uses/activities.]

1. Is the unit of sufficient size?

Yes X No

Description: Refer to this unit's associated Map 1 for its location. The unit consists of two parcels – north and south. Combined size is 69 acres. The north parcel is 68 acres; the south 1 acre, part of which is BLM-administered public lands in Nevada (Winnemucca BLM District). Both parcels are contiguous to the Disaster Peak WSA with no qualifying feature separating them from the WSA. Thus, both parcels meet size criteria. It is not known how these two parcels were excluded from being considered as part of WSA when BLM designated the WSA in 1980. Other boundaries of the south parcel are private land on its north side and a road traversing public lands on its southeast side. Other boundaries of the north parcel are private lands on its west and south sides, and a road traversing public lands on its northeast and southeast sides. The two boundary roads are the same roads which serve as boundary for the Disaster Peak WSA. These roads are mechanically maintained as need to provide for relatively regular and seasonally continuous use.

NOTE: Both are associated solely with a portion of Disaster Peak WSA which BLM has identified as not being suitable and/or manageable for designation as Wilderness by Congress. However, matters of suitability and manageability or not factors of consideration for wilderness characteristic inventory.

2. Is the unit in a natural condition?

Yes X No N/A

Description: The south parcel is of a mild gradient slope of 5,600 to 5,640 feet elevation. The north parcel with elevations of about 5,450 to 5,650 feet has a small hill associated with it. Vegetation in the parcels is primarily sagebrush and both native and non-native grasses.

Refer to the associated Map 1 of this inventory unit for human imprints within the 2 parcels. There is a 0.1 mile rangeland fence along the east boundary of the south parcel. The north parcel has a 0.1 mile motorized primitive trail and remnant slight surface scarring associated with a small but very dated locatable mineral prospecting site. The two parcels, individually and collectively in combination and more so with the

contiguous WSA appear to be affected primarily by the forces of nature with work of humans substantially unnoticeable to the average visitor.

3. Does the unit have outstanding opportunities for solitude?

Yes X No N/A

Description: Being contiguous with the WSA, both parcels in combination with the WSA are of such overall size and overall configuration to provide for outstanding opportunities for solitude.

4. Does the unit have outstanding opportunities for primitive and unconfined recreation?

Yes X No N/A

Description: Being contiguous with the WSA, both parcels supplement the outstanding opportunities of primitive and unconfined recreation associated with the WSA. This includes a combination of but limited to hiking, backpacking, hunting -- of common game species as well for the highly prized bighorn sheep as a game species in Oregon -- wildlife/geologic and general sightseeing, photography and horseback riding.

5. Does the unit have supplemental values?

Yes X No N/A

Description: The two parcels are within a very large bighorn sheep habitat use area. Bighorn sheep are a BLM special status species in Oregon.

Summary of Findings and Conclusion

Unit Name and Number: OR-036-094 – Disaster Peak Contiguous

Summary Results of Analysis:

- 1. Does the area meet any of the size requirements? X Yes No
- 2. Does the area appear to be natural? Yes X No
- 3. Does the area offer outstanding opportunities for solitude or a primitive and unconfined type of recreation? X Yes No NA
- 4. Does the area have supplemental values? X Yes No NA

Conclusion -- check one:

 X The area, or a portion of the area, has wilderness character.

 The area does not have wilderness character.

Prepared by: Robert Alward
Robert Alward, Wilderness Planner contractor

Team Members:

<u>[Signature]</u>	<u>4/29/10</u>
Richard White, Range Management Specialist	Date
<u>[Signature]</u>	<u>5/17/10</u>
Marcy Egger, Range Management Specialist	Date
<u>[Signature]</u>	<u>2/10/10</u>
Dave Draheim, Outdoor Recreation Planner	Date
<u>[Signature]</u>	<u>4-28-2010</u>
Jon Sadowski, Environmental Contractor	Date
<u>[Signature]</u>	<u>5/17/10</u>
Jack Wenderoth, Planning Contractor	Date
<u>[Signature]</u>	<u>5-14-10</u>
Eian Ray, GIS Specialist, contractor	Date
<u>[Signature]</u>	<u>5/18/10</u>
Brent Grasty, GIS Coordinator	Date

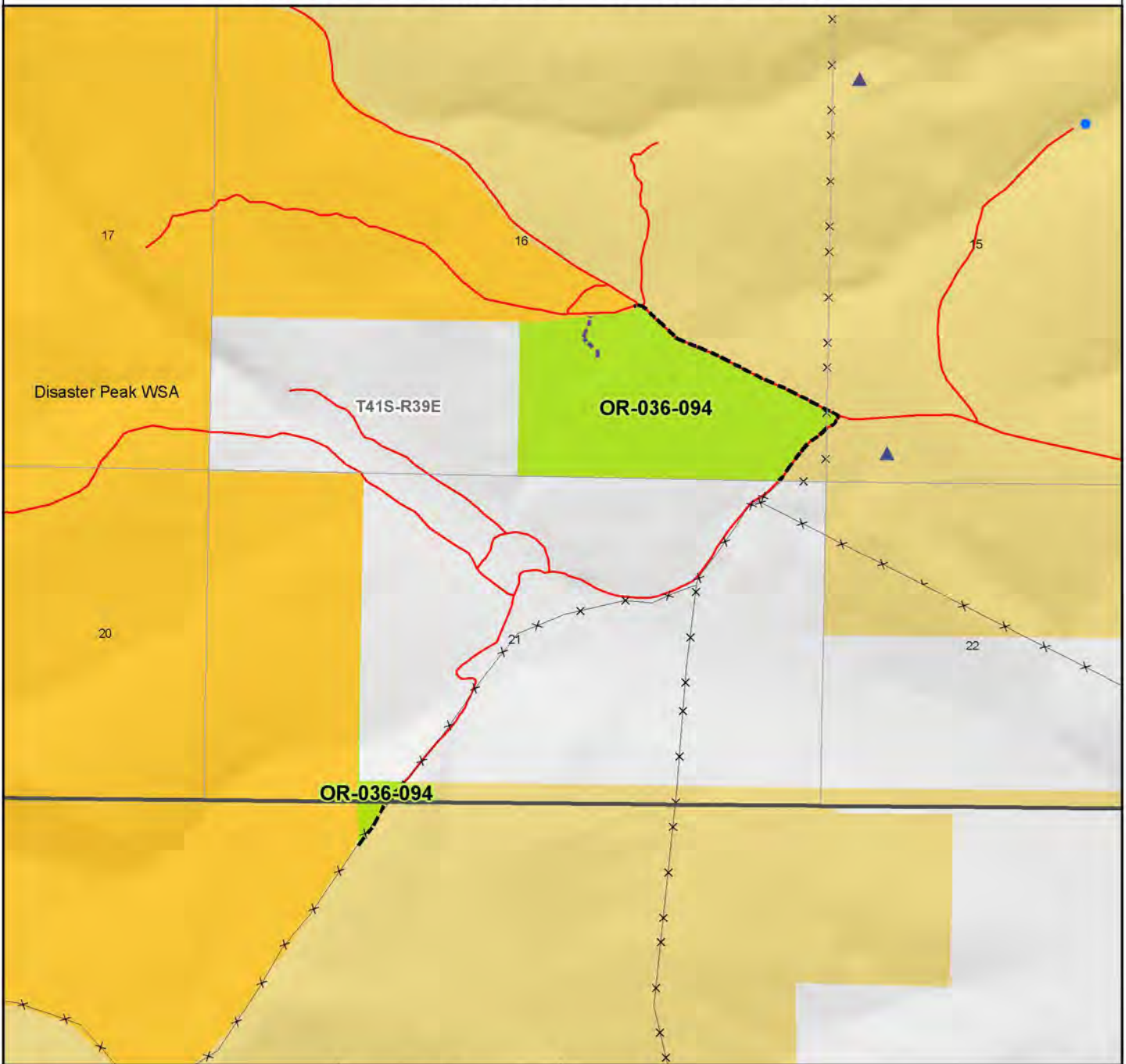
Approved by:

Carolyn R. Freeborn 7/19/2010
Carolyn Freeborn, Jordan Resource Area Field Manager Date

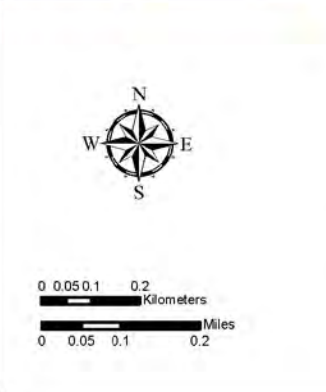
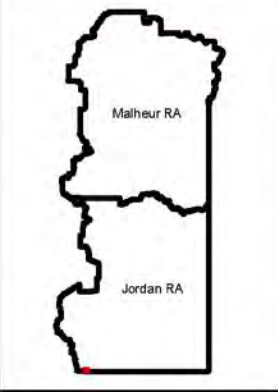
This form documents information that constitutes an inventory finding on wilderness characteristics. It does not represent a formal land use allocation or a final agency decision subject to administrative remedies under either 43 CFR parts 4 or 1610.5-2.

Wilderness Characteristics - Overview

Disaster Peak Contiguous - OR-036-094 - Map 1 of 1



Legend	
	Developed Spring
	Wildlife Guzzler
	Earthen Reservoir
	Pipeline
	Trough
	Fence
	Storage Tank
	Surface Mining Disturbance
	Sage Grouse Lek
	Special Status Plant
	BLM Wild Char Inventory Unit
	Wilderness Study Area
	Mineral Material Site
	Road/Utility Right-of-Way
	Major Water Body
Route Types - BLM Determination	
	Boundary Road
	Motorized Primitive Trail (MPT)
	Discontinued Use
Routes - Outside Wild Char Unit	
	County
	Major Highway
	BLM Numbered & Other Routes
Land Ownership	
	Bureau of Land Management
	State
	Private
	Other Federal Land



U.S. DEPARTMENT OF THE INTERIOR
 BUREAU OF LAND MANAGEMENT

VALE DISTRICT
 January 11, 2010
No warranty is made by the Bureau of Land Management as to the accuracy, reliability, or completeness of these data for individual or aggregate use with other data. Original data were compiled from various sources. This information may not meet National Map Accuracy Standards. This product was developed through digital means and may be updated without notification.
--FINAL--