

Wilderness Inventory Unit Index of Documents
Deer Butte OR-036-053, 34 total pages

Page 1: Index Cover Sheet

[Page 2: Form 1 – Documentation of BLM Wilderness Inventory: Findings on Record](#)

[Page 5: Form 2 – Documentation of Current Wilderness Inventory Conditions](#)

[Page 12: Form 2 – Summary of Findings and Conclusion](#)

[Page 13: Wilderness Characteristics Overview – Deer Butte OR-036-053 Map 1 of 2](#)

[Page 14: Wilderness Characteristics -Land Treatments- Deer Butte OR-036-053 Map 2 of 2](#)

[Page 15: Wilderness Characteristics – BLM Photo Points – Deer Butte Map & Log](#)

[Page 16: OR-036-053 Deer Butte BLM Photos](#)

[Page 23: H-6300-1-Wilderness Inventory Maintenance in BLM Oregon/Washington
Appendix C – Road* Analysis: 7305-0-00](#)

[Page 29: H-6300-1-Wilderness Inventory Maintenance in BLM Oregon/Washington
Appendix C – Road* Analysis: 7311-0-00](#)

Prepared by:
U.S. Department of the Interior
Bureau of Land Management
Vale District Office
100 Oregon Street
Vale, Oregon 97918



H-6300-1-WILDERNESS INVENTORY MAINTENANCE IN BLM OREGON/WASHINGTON

APPENDIX B – INVENTORY AREA EVALUATION

Evaluation of Current Conditions:

- 1) Document and review the existing BLM wilderness inventory findings on file, if available, regarding the presence or absence of individual wilderness characteristics, using Form 1, below.
- 2) Consider relevant information regarding current conditions available in the office to identify and describe any changes to the existing information (use interdisciplinary (ID) team knowledge, aerial photographs, field observations, maps, etc.), and document your findings on Form 2, below.

When Citizen Information has been submitted regarding wilderness characteristics, document the submitted materials including: date of Submission; Name of District(s) and Field Office(s) Affected; Type of material Submitted (e.g. narrative, map, and photos). Evaluate any submitted citizen information regarding the validity of proposed boundaries of the unit(s), the existence of roads and other boundary features, the size of the unit(s), and the presence or absence of wilderness characteristics based on relevant information available in the office (prior BLM inventories, ID team knowledge, aerial photographs, field observations, maps, etc.)

Conduct field reviews as necessary to verify information and to ascertain current conditions. Reach conclusions on current conditions including boundaries, size of areas and presence or absence of wilderness characteristics. Fully explain the basis for each conclusion on form 2, including any critical differences between BLM and citizen information.

Document your findings regarding current conditions for each inventoried area. Describe how the present conditions are similar to, or have changed from, the conditions documented in the original wilderness inventory. Document your findings on Form 2 for each inventory area. Cite to or attach data considered, including photographs, maps, GIS layers, field trip notes, project files, *etc.*

Year: 2011 Unit Number/Name: OR-036-053 – Deer Butte

**FORM 1 -- DOCUMENTATION OF BLM WILDERNESS INVENTORY
FINDINGS ON RECORD**

1. Is there existing BLM wilderness inventory information on all or part of this area?

Yes X No _____ (If yes, and if more than one unit is within the area, list the names of those units.):

A.) Inventory Source(s) -- (X) Denotes all applicable BLM Inventory files, printed maps, or published BLM Decision documents with information pertaining to this unit.

Wilderness Inventories

- (X) 1978 – 1979 -- BLM Wilderness Inventory Unit OR-03-09-02 Deer Butte; OR-03-09-13 Anex; and 3-122 of OR-03-09-03 Mid Creek (unpublished BLM documents stored in Vale District case files)
- (X) April 1979 – *Wilderness -- Proposed Initial Inventory – Roadless Areas and Islands Which Clearly Do Not have Wilderness Characteristics, Oregon and Washington*

Wilderness Decision Documents

- (X) August 1979 – *Wilderness Review – Initial Inventory, Final Decision on Public Lands Obviously Lacking Wilderness Characteristics and Announcement of Public Lands to be Intensively Inventoried for Wilderness Characteristics, Oregon and Washington* (green document)
- () October 1979 – *Wilderness Review – Intensive Inventory - Oregon, Proposed Decision on the Intensive Wilderness Inventory of Selected Areas* (grey document).
- () March 1980 – *Wilderness Review – Intensive Inventory; Final Decisions on 30 Selected Units in Southeast Oregon and Proposed Decisions on Other Intensively Inventoried Units in Oregon and Washington* (orange document)
- () November 1980 - *Wilderness Inventory – Oregon and Washington, Final Intensive Inventory Decisions* (brown document)
- () November 1981 *Stateline Intensive Wilderness Inventory Final Decision, Oregon, Idaho, Nevada, Utah* (tan document).

B.) Inventory Unit Name(s)/Number(s)

BLM OR-03-09-02 Deer Butte; 3-122 of OR-03-09-03 Mid Creek; and OR-03-09-13 Anex

C.) Map Name(s)/Number(s)

- Final Decision – Initial Wilderness Inventory Map, August 1979, Oregon
- Proposed Decision -- Intensive Wilderness Inventory of Selected Areas Map, October 1979, Oregon
- Intensive Wilderness Inventory Map, March 1980, Oregon
- Intensive Wilderness Inventory --Final Decisions Map, November 1980, Oregon.
- November, 1981 *Stateline Intensive Wilderness Inventory Final Decision, Oregon, Idaho, Nevada, Utah* (tan document).

D.) BLM District(s)/Field Office(s)

Vale District Office

Jordan Field Office

2. BLM Inventory Findings on Record

(Existing inventory information regarding wilderness characteristics (if more than one BLM inventory unit is associated with the area, list each unit and answer each question individually for each inventory unit):

Inventory Source: See above.

Unit# / Name	Size (historic acres)	Natural Condition? Y/N	Outstanding Solitude? Y/N	Outstanding Primitive & Unconfined Recreation? Y/N	Supplemental Values? Y/N
OR-03-09-02 Deer Butte	6,360	*	*	*	*
3-122 of OR-03-09-03 Mud Creek	6,280	*	*	N	N
OR-03-09-13 Anex	3,120	*	*	*	*
TOTAL	15,760				

*-These criteria were not addressed during the inventory of this unit.

H-6300-1-WILDERNESS INVENTORY MAINTENANCE IN BLM OREGON/WASHINGTON

APPENDIX B – INVENTORY AREA EVALUATION

Evaluation of Current Conditions:

1) Document and review the existing BLM wilderness inventory findings on file, if available, regarding the presence or absence of individual wilderness characteristics, using Form 1, below.

2) Consider relevant information regarding current conditions available in the office to identify and describe any changes to the existing information (use interdisciplinary (ID) team knowledge, aerial photographs, field observations, maps, etc.), and document your findings on Form 2, below.

When Citizen Information has been submitted regarding wilderness characteristics, document the submitted materials including: date of Submission; Name of District(s) and Field Office(s) Affected; Type of material Submitted (e.g. narrative, map, photo). Evaluate any submitted citizen information regarding the validity of proposed boundaries of the unit(s), the existence of roads and other boundary features, the size of the unit(s), and the presence or absence of wilderness characteristics based on relevant information available in the office (prior BLM inventories, ID team knowledge, aerial photographs, field observations, maps, etc.)

Conduct field reviews as necessary to verify information and to ascertain current conditions. Reach conclusions on current conditions including boundaries, size of areas and presence or absence of wilderness characteristics. Fully explain the basis for each conclusion on form 2, including any critical differences between BLM and citizen information.

Document your findings regarding current conditions for each inventoried area. Describe how the present conditions are similar to, or have changed from, the conditions documented in the original wilderness inventory. Document your findings on Form 2 for each inventory area. Cite to or attach data considered, including photographs, maps, GIS layers, field trip notes, project files, *etc.*

FORM 2 -- DOCUMENTATION OF CURRENT WILDERNESS INVENTORY CONDITIONS

Unit Number/Name –OR-036-052—Deer Butte

Note: In February, 2004, the Vale District received from Oregon Natural Desert Association (ONDA) its evaluation of wilderness characteristics for what ONDA names its “Deer Butte proposed WSA” located just south and adjacent to the Lower Owyhee Canyon WSA. BLM’s Deer Butte unit differs in size from ONDA’s Deer Butte proposed WSA of 17,766 acres because BLM has determined that the northern parcel of BLM Unit OR-036-077 is not a portion of the Deer Butte unit but is separated by and shares a common boundary road that is BLM Road 7305-0-00 making the Deer Butte unit 15,826 acres in size.

Within ONDA’s narrative BLM Road 7305-0-00 is referred to by ONDA as a “way” with information contained in their GIS and Road Logs for two sections of BLM Road 7305-0-00 as routes OR1 and OR North Boundary. This presents a question of whether ONDA’s section of BLM Road 7305-0-00 is an actual road or a way. If BLM Road 7305-0-00 is indeed a road then ONDA’s contention that it’s “Deer Butte proposed WSA” is contiguous with the Lower Owyhee Canyon WSA is not valid. Please refer to BLM’s Road analysis for BLM Road 7305-0-00 where BLM has provided information about this section of road and has determined that it meets the definition of a road for inventory purposes.

Description of Current Conditions: [Include land ownership, location, topography, vegetation features and summary of major human uses/activities.]

1. Is the unit of sufficient size?

Yes X No

Description: BLM Unit OR-036-053 is comprised of 15,826 acres, meeting the size criterion. Refer to this inventory unit’s associated Map 1 for its location. BLM Unit OR-036-053 is comprised of the original BLM units OR-03-09-02 Deer Butte; 3-122 of OR-03-09-03 Mid Creek; and OR-03-09-13 Anex of the 1978 -1980 wilderness inventories of which the only unit to meet the size requirements was Mid Creek. The present BLM inventory ID team met on December 19, 2008 and determined that the identified boundary roads between these three units from the original 1978-1980 inventories no longer meet the definition for a road. Because these original internal boundary roads over the last three decades have received reduced regular use and clearly indicate the absence of identifiable maintenance performed on the roadways, BLM combined the units to create the present BLM Unit OR-036-053. Acreage for BLM Unit OR-036-053 in Form 2 is calculated

from BLM GIS information. BLM Unit OR-036-053 boundaries consist of BLM Road 7305-0-00 on its north, northwest, south, and southwest sides, BLM Road 7304-0A on its south and south side, BLM Road 7311-00 on its east side, BLM Road 7303-00 on its upper southeast side, and an un-numbered county road on the northeast side. The natural-surfaced boundary roads receive mechanical maintenance as needed to keep them passable on a regular and continuous (seasonal) basis.

ONDA's 2004 document for their Deer Butte proposed WSA presented information that determined that BLM Road 7305-0-00 was a "way" and no longer a boundary road. This determination made ONDA's unit proposal slightly larger in acreage than BLM's Unit OR-036-053 by the inclusion of a parcel of BLM Unit OR-036-077. In addition, ONDA has proposed that their Deer Butte proposed WSA is contiguous with the Lower Owyhee Canyon WSA because of their determination for BLM Road 7304-0-00.

BLM does not agree with ONDA's finding for BLM Road 7305-0-00. BLM's Road Analysis for BLM Road 7305-0-00 has provided information about the sections of road that ONDA referred to as "ways" and has determined that it meets the definition of a road for inventory purposes.

2. Is the unit in a natural condition?

Yes No N/A

Description: The majority of BLM Unit OR-036-053 generally appears to have been affected by the forces of nature but contains human imprints that are substantially noticeable in the area to the south/southwest of the base of the locally named Riley Horn Rim. BLM Unit OR-036-053 consists mainly of an elevated bench with a predominate rim nearly 250 feet above the surrounding south/southwest terrain and Deer Butte that rises approximate 250 feet above the rim in the center of the unit. Elevation levels within the unit range from a low of 3,985 feet above mean sea level (msl) in Mud Creek at the western boundary of the unit to a high of 4,673 feet (msl) at the crest of Deer Butte in the central portion of the unit. The unit is dissected by numerous small drainages that radiate outwardly in all directions from Deer Butte. Most of the drainages from the unit flow to the west into Mud Creek except for a few channels that drain to the northwest into Fort Creek or to the east into Crater Lake. Vegetation within the unit consists primarily of either big or low sagebrush that contain native and non-native grass species.

Refer to this inventory unit's associated Map 1 and Map 2 for its human developments. Human imprints within the unit include 19.75 miles of 14 motorized primitive trails, 13.75 miles of fence line, one pipeline systems consisting of 4.75 miles of pipe and 4 troughs, six troughs located at one site for transported water, 12 earthen reservoirs, one circular shaped corral with fenced loading shoots, one three-sided fenced enclosure

surrounding a reservoir, and 7 vegetation manipulation treatments from 1956 through 1999. The numerous vegetation treatments were conducted in about 80 percent of the acreage within the unit over a four decade period. Presently, to the average visitor, the vegetation treatments conducted above the Riley Horn Rim in the north/northeast portion of the unit appear as a whole, individually and collectively, mostly indistinguishable across the landscape. Vegetation treatments conducted in 1964 within the northeastern portion the unit consisted of chemical spray applications to reduce brush across the landscape that did not require any additional land disturbance by mechanical equipment.

The northeastern portion also contains one additional wildland fire rehabilitation vegetation treatment conducted during 1996 in two areas that consisted of both drill seeding and aerial seeding applications. The 1996 application did not produce any linear contrast of vegetation across the landscape in the north/northeast portion. In contrast, areas to the south/southwest of the base of Riley Horn Rim inside the western border and near the southeast corner boundary contain areas of about 780 acres and 35 acres show evidence of drill rows from treatments conducted in 1996 and 1956 respectively that have created noticeable linear contrast of vegetation.

The number of human developments within the original three units identified by the 1978-80 wilderness inventories when compared to the present number of developments within BLM Unit OR-036-053 differs significantly. BLM Unit OR-036-053 presently contains an additional 6.1 miles of fence line, 2 earthen reservoirs 15.75 miles of MPTs, one fenced corral, one reservoir fenced enclosure, 4.75 miles of pipeline, 10 troughs, and 4 vegetation treatments. The largest portion of the additional miles of MPTs presently in the unit is from reclassification of boundary roads surrounding the three original 1978-80 inventory units to MPTs because they no longer met the definition of a road. Most of these MPTs in the north/northeast portion of the unit are less traveled and contain brush and perennial grasses within the center of the route.

ONDA's Deer Butte proposed WSA document states that the only unnatural feature noted in Deer Butte proposed WSA by the 1978-80 inventories was Mud Creek Reservoir (ONDA photo AC17) and this reservoir is not a substantially noticeable development. In their report ONDA concluded that the Deer Butte proposed WSA appears primarily affected by the forces of nature, but did not identify any other existing human developments within their proposal that BLM has described above.

The 1979 inventory concluded that a portion of what now is BLM Unit OR-036-053 appeared to generally contain a natural condition except for a 6,400 acre chemically applied brush control treatment that was substantially noticeable. Although the present unit now contains only acreage of vegetation affected by linear contrast in the south/southwest portion of the unit, there have been additional projects constructed over the last three decades in this portion of the unit such as pipelines, troughs, fences, reservoirs, and MPTs that access these projects where the works of man are now visual across the landscape.

Overall, in the south/southwest portion of the present BLM unit below the Riley Horn Rim, the works of man are substantially noticeable because of the number of intrusions of man-made developments, their proximity to each other, the dissection of the area by pipelines and MPTs, and the linear contrast of vegetation treatments. Therefore, the south/southwest portion of BLM Unit OR-036-053 does not appear to have been primarily affected by the forces of nature. Whereas, the remaining larger north/northeast portion of BLM Unit OR-036-053 located on and above the Riley Horn Rim, even though this area contains numerous earthen reservoirs and miles of MPTs, appears primarily affected by the forces of nature because these man-made features are not substantially noticeable across the unit.

Because the south/southwest portion is found to not be primarily affected by the forces of nature, characteristics for outstanding opportunities for solitude and primitive and unconfined recreation will not be addressed below for this area within BLM Unit OR-036-053.

3. Does the unit have outstanding opportunities for solitude?

Yes _____ No X N/A _____

Description: BLM concludes that the north/northeast portion of BLM Unit OR-036-053 does not provide outstanding opportunities for solitude. The north/northeast portion of BLM Unit OR-036-053 possesses an irregular triangular shape, with a length of about 6 miles along the southwest and east boundaries while the northwest boundary is slightly shorter at approximately 5 miles in length making the center of the unit about 3 to 4 miles in width and tapering to points at the southeast and northwest corners. Deer Butte, located near the center of the triangle, rises approximately 250 feet above the remaining nearly flat terrain. The butte provides limited topographic screening to restrict the view across the entire unit from many areas of the unit boundaries. The Riley Horn Rim and escarpment traverses the entire unit boundary from the southeast to the northwest and rises about 250 feet above the south/southwest portion of the unit that does not appear to have been primarily affected by the forces of nature. Other than Deer Butte, the majority of the nearly flat north/northeast portion of the unit above the Riley Horn Rim lacks pronounced features or secluded sites except for a few drainages that dissect the rim and extend to the northeast across the landscape.

Because of the chemical vegetation treatment of 1974 and the 1996 wildland fire much of the brush component within the unit does not provide any extensive vegetative screening for seclusion from others. A number of MPTs dissect the north/northeast portion of BLM Unit OR-036-053. These routes are not well traveled and are not substantially noticeable across the unit in from many areas because of the presence of the centrally located Deer Butte. Small drainages radiating outwardly from Deer Butte add some relief across the landscape providing small areas of remoteness and solitude away from vehicular traffic in a few portions of the unit. As a result of the area's size relative to its shape, and allowing for the absence of extensive vegetative screening, the diversity in relief over most of the

unit by the limited features of Deer Butte and the Riley Horn Rim do not provide the unit with outstanding opportunities for solitude.

ONDA's 2004 document presented that their inventory findings for the Deer Butte proposed WSA would enhance previously noted outstanding opportunities for solitude in the contiguous Lower Owyhee Canyon WSA. ONDA stated that outstanding opportunities for solitude would be provided in this vast roadless area and its size and shape would not inhibit opportunities for solitude since BLM Road 7305-0-00 does not meet the definition of a road, thereby making the Deer Butte proposed WSA contiguous with the Lower Owyhee Canyon WSA. BLM has determined that BLM Road 7305-0-00 meets the definition of a road. Therefore, the Deer Butte Unit is not contiguous with the Lower Owyhee Canyon WSA and does not enhance outstanding opportunities for solitude in the WSA.

4. Does the unit have outstanding opportunities for primitive and unconfined recreation?

Yes _____ No X N/A _____

Description: BLM concludes that BLM Unit OR-036-053 does not provide outstanding opportunities for primitive and unconfined recreation. Opportunities for primitive and unconfined types of recreation are available in the unit, but the opportunities are not outstanding. Recreational opportunities within the unit include hiking, camping, horseback riding, photography, bird watching, geological study, general sightseeing, and hunting of common game species (chukar, antelope, and deer). The opportunities for these activities are not outstanding because, relative to others of its kind, the unit as a whole lacks scenic quality, diversity of landforms, and challenging terrain except for the area along the bench of the Riley Horn Rim and 250 foot Deer Butte north of the rim.

Although the opportunity to hunt Bighorn sheep within this inventory parcel may exist, BLM does not find it to be outstanding due to the limited terrain within the parcel that Bighorn sheep occupy and utilize on a regular basis (e.g., rugged, rocky, cliffy or steep-sloped terrain). Moreover, while this parcel is included within the identified potential habitat for Bighorn sheep, no local sheep herd is known to inhabit or move through the area within the parcel.

ONDA's 2004 document presented that their inventory findings for the Deer Butte proposed WSA would enhance previously noted outstanding opportunities for primitive and unconfined recreation in the contiguous Lower Owyhee Canyon WSA. ONDA stated that outstanding opportunities for primitive and unconfined recreation would be provided in this vast roadless area and its size and shape would not inhibit opportunities for primitive and unconfined recreation since BLM Road 7305-0-00 does not meet the definition of a road, thereby making the Deer Butte proposed WSA contiguous with the Lower Owyhee Canyon WSA. BLM has determined that BLM Road 7305-0-00 meets the definition of a road. Therefore, the Deer Butte Unit is not contiguous with the Lower

Owyhee Canyon WSA and does not enhance outstanding opportunities for primitive and unconfined recreation in the WSA.

BLM also calls attention to ONDA’s reference to wide-open vistas and scenic views of the Owyhee Canyon as supporting evidence for outstanding opportunities for primitive and unconfined recreation within their proposed Deer Butte WSA. BLM does not dispute ONDA’s information about these vistas and views of areas lying outside of the unit. However, BLM brings attention to the fact that the inventory unit is evaluated upon those values that occur within the boundaries of each unit and not of those values lying beyond.

5. Does the unit have supplemental values?

Yes X No N/A

Description: BLM has documented three sage grouse leks within the unit. The bird is a BLM special status animal species.

ONDA states that its Deer Butte proposed WSA may provide habitat for the Ground Snake, Ferruginous Hawk, Townsend’s Big-eared Bat, Pygmy Rabbit, and the White-tailed Antelope Squirrel, all of which are designated “sensitive species” by the State of Oregon. Also ODNA stated that the Townsend’s Big-eared Bat and Pygmy Rabbit are Federal Species of Concern. BLM recognizes – at this point in time-- the Pygmy Rabbit and Townsend’s Big-eared Bat as a BLM special status animal species and acknowledges that habitat requirements may exist for the Ground Snake, Ferruginous Hawk, and the White-tailed Antelope Squirrel. However, neither ONDA nor any other entity has provided BLM with official documentation of the presence of these mentioned species, or of the Pygmy Rabbit and Townsend’s Big-eared Bat in the inventory unit. BLM’s own documentation does not contain evidence of the presence of these species either.

Summary of Findings and Conclusion

Unit Name and Number: OR-036-053 – Deer Butte

Summary Results of Analysis:

- 1. Does the area meet any of the size requirements? X Yes No
- 2. Does the area appear to be natural? X Yes X No
- 3. Does the area offer outstanding opportunities for solitude or a primitive and unconfined type of recreation? Yes X No NA
- 4. Does the area have supplemental values? X Yes No NA

Conclusion -- check one:

- The area, or a portion of the area, has wilderness character.
- X The area does not have wilderness character.

Prepared by: Jack R Wenderoth 4/5/2011
Jack Wenderoth, Planning Contractor

Team Members:

<u>Aimee R. Huff</u>	<u>4/5/2011</u>
Aimee Huff, Rangeland Management Specialist	Date
<u>Eian Ray</u>	<u>4/5/11</u>
Eian Ray, GIS Specialist, Contractor	Date
<u>Garth Ross</u>	<u>4/5/11</u>
Garth Ross, Wildlife Biologist	Date
<u>Brent Grasty</u>	<u>4/5/11</u>
Brent Grasty, GIS Coordinator	Date

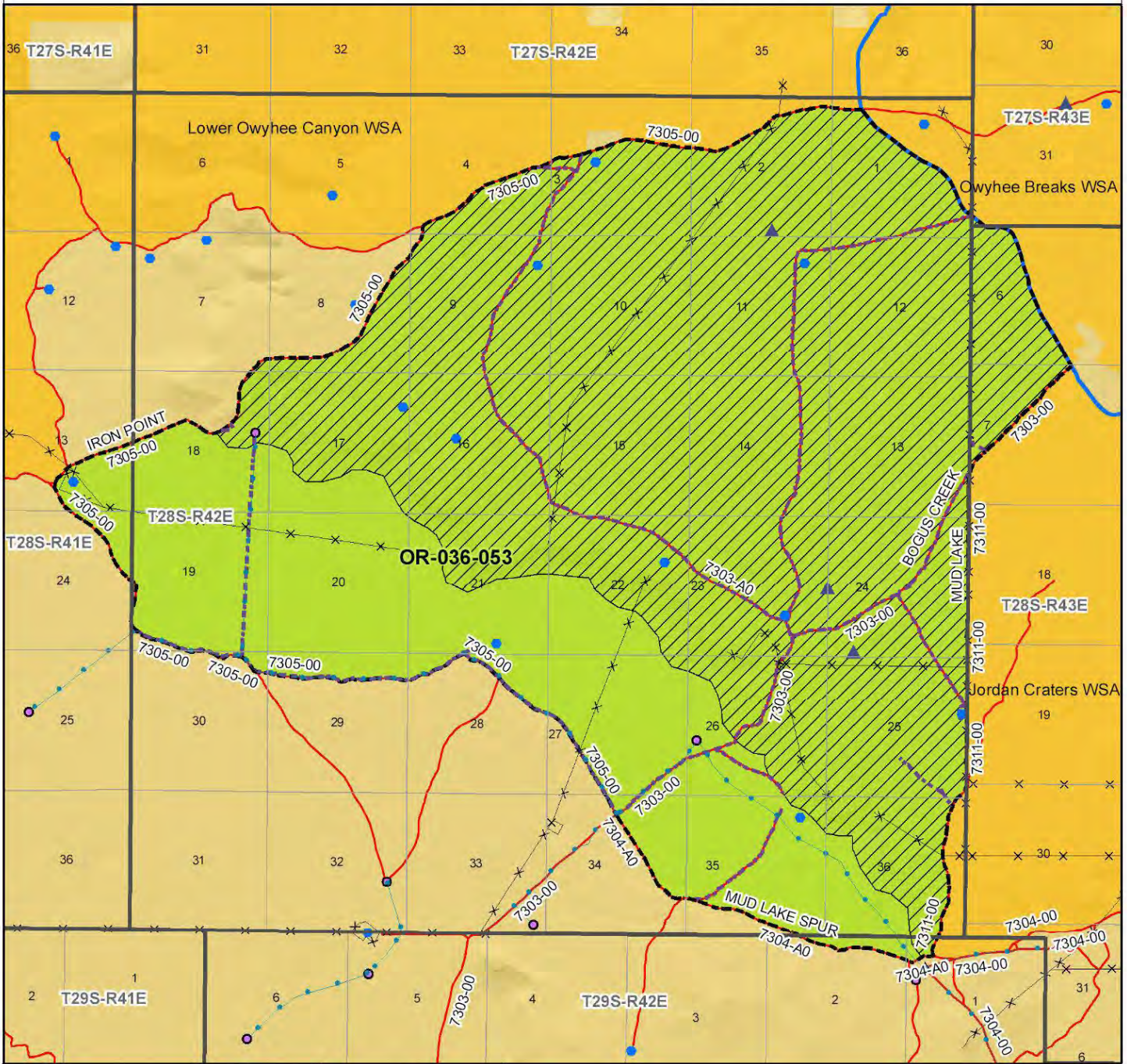
Approved by:

Carolyn R Freeborn 4/5/2011
Carolyn Freeborn, Jordan Resource Area Field Manager Date

This form documents information that constitutes an inventory finding on wilderness characteristics. It does not represent a formal land use allocation or a final agency decision subject to administrative remedies under either 43 CFR parts 4 or 1610.5-2.

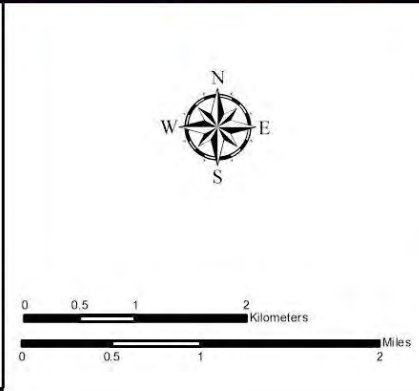
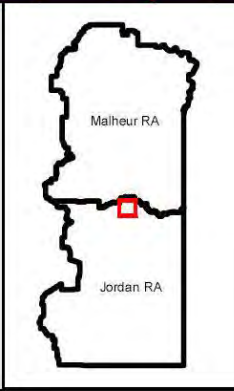
Wilderness Characteristics - Overview

Deer Butte - OR-036-053 - Map 1 of 2



Legend

Developed Spring	Boundary Road
Wildlife Guzzler	Motorized Primitive Trail (MPT)
Earthen Reservoir	Discontinued Use
Pipeline	Routes - Outside Wild Char Unit
Trough	County
Fence	Major Highway
Storage Tank	BLM Numbered & Other Routes
Surface Mining Disturbance	Land Ownership
Sage Grouse Lek	Bureau of Land Management
Special Status Plant	State
BLM Wild Char Inventory Unit	Private
Wilderness Study Area	Other Federal Land
Mineral Material Site	Unnatural condition within WC unit
Road/Utility Right-of-Way	
Major Water Body	



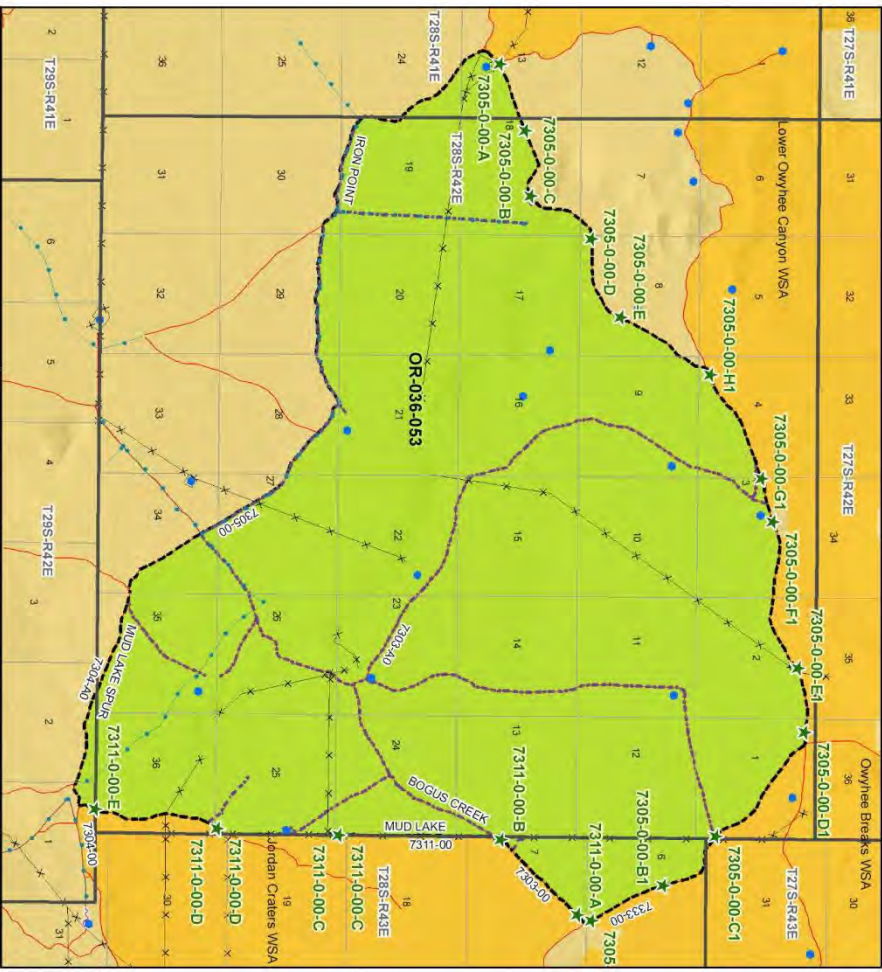
U.S. DEPARTMENT OF THE INTERIOR
BUREAU OF LAND MANAGEMENT

VALE DISTRICT
January 4, 2011

No warranty is made by the Bureau of Land Management as to the accuracy, reliability, or completeness of these data for individual or aggregate use with other data. Original data were compiled from various sources. This information may not meet National Map Accuracy Standards. This product was developed through digital means and may be updated without notification.

--FINAL--

Wilderness Characteristics - BLM Photo Points Deer Butte - OR-036-053



Legend

- Developed Spring
- Wildlife Geyser
- Wildlife Reserve
- Federal Reserve
- Private
- Mineral Material Site
- Road Utility ROW
- Wilderness Study Area
- BLM Wild Char Inventory Photo Points
- BLM Wild Char Inventory Line
- Route Type - BLM Determination
- Secondary Road
- Historical Primitive Trail (NFT)
- Proposed Use
- Private
- BLM Wild Char Inventory Photo Points
- BLM Wild Char Inventory Line
- BLM National & Other Routes

US DEPARTMENT OF THE INTERIOR
BUREAU OF LAND MANAGEMENT
VALE DISTRICT
March 23, 2011

Scale: 0 0.25 0.5 1 Miles

North Arrow

Inset Map: Shows the location of the study area within the state of Oregon.

Wilderness Characteristics - BLM Photo Points Deer Butte - OR-036-053

PHOTO LOCATION	DIRECTION	PHOTO TYPE	PHOTO DATE	COMMENTS
7305-0-00-A	NE	Route	20080823	Front, beginning of RT 7305-0-00
7305-0-00-A	SW	Route	20080823	Back, beg. of RT 7305-0-00, cattle gate, fence
7305-0-00-A	SE	Project	20080823	OR-036-053-A-SE Fence
7305-0-00-B	NE	Route	20080823	Front
7305-0-00-B	SW	Route	20080823	Back
7305-0-00-C	NE	Route	20080823	Front
7305-0-00-C	SW	Route	20080823	Back
7305-0-00-D	E	Route	20080823	Front
7305-0-00-D	W	Route	20080823	Back
7305-0-00-E	NE	Route	20080823	Front
7305-0-00-E	SW	Route	20080823	Back
7311-0-00-A	SW	Route	20090413	Berm, Ditch.
7311-0-00-A	NE	Route	20090413	Berm, Ditch.
7311-0-00-B	SW	Route	20090413	Berm, Ditch.
7311-0-00-B	NE	Route	20090413	Berm, Ditch.
7311-0-00-C	S	Route	20090413	Large and small berms.
7311-0-00-C	N	Route	20090413	Berm, Recently graded.
7311-0-00-D	S	Route	20090413	Berm, Ditch.
7311-0-00-D	N	Route	20090413	Berm, Ditch.
7311-0-00-E	S	Route	20090413	Berm, Ditch.
7311-0-00-E	N	Route	20090413	Berm, Ditch.
7305-0-00-A1	NW	Route	20090413	Large and small berms. Recent tracks.
7305-0-00-A1	SE	Route	20090413	Large and small berms. Recent tracks.
7305-0-00-B1	NW	Route	20090413	Large and small berms. Recent tracks.
7305-0-00-C1	NW	Route	20090413	Small berm
7305-0-00-C1	SE	Route	20090413	Cattle guard, Fence.
7305-0-00-D1	W	Route	20090413	Ditch and berm.
7305-0-00-D1	E	Route	20090413	Ditch and berm.
7305-0-00-E1	W	Route	20090413	Ditch.
7305-0-00-E1	W	Route	20090413	Ditch.
7305-0-00-F1	E	Route	20090413	Ditch.
7305-0-00-G1	W	Route	20090413	Ditch, Berm.
7305-0-00-G1	E	Route	20090413	Ditch, Berm.
7305-0-00-H1	E	Route	20090413	Ditch.
7305-0-00-H1	E	Route	20090413	Ditch.
7305-0-00-B1	SE	Route	20090413	Large and small berms. Recent tracks.

Note: The BLM Wild Char PhotoPoints displayed on the map are labeled with their Photo Locations. The BLM Photo Log table shown above lists the photos taken at their respective Photo Locations. Multiple photos may be taken at each Photo Location. Scenery and Project Photo Type pictures have their photo names provided in the Comments field.



036-RT6-A-E.JPG

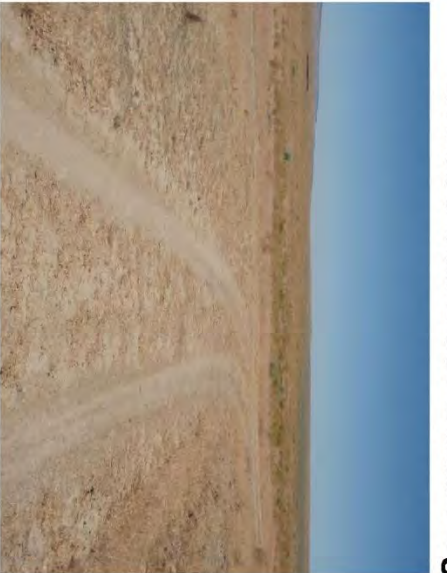


036-RT6-B-E.JPG

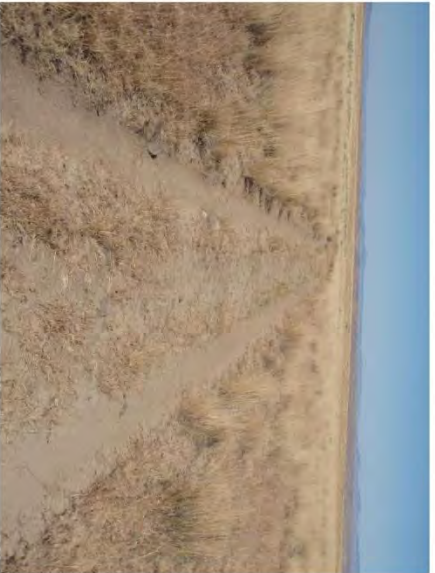


036-RT6-C-SE.JPG

OR-036-053 Deer Butte Page 1



036-RT6-A-N.JPG



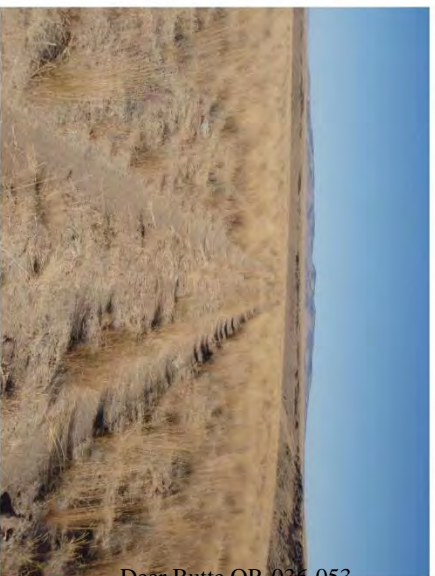
036-RT6-B-W.JPG



036-RT6-D-S.JPG



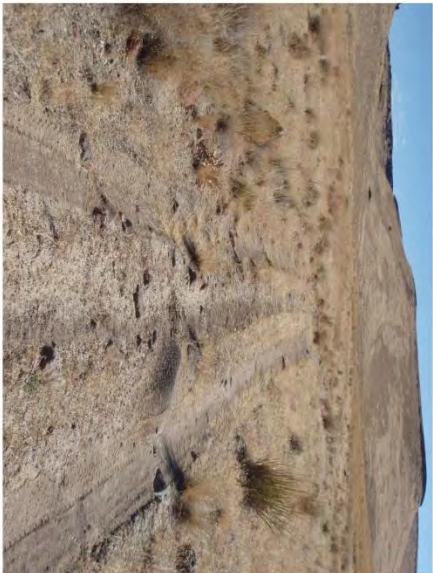
036-RT6-A-W.JPG



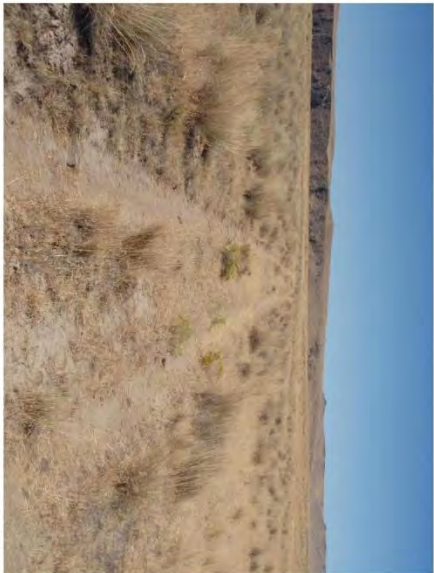
036-RT6-C-NW.JPG



036-RT6-D-SW.JPG



036-RT6-E-NE.JPG



036-RT6-F-SW.JPG



036-RT6-H-NW.JPG



036-RT6-E-SW.JPG



036-RT6-G-NE.JPG



036-RT6-H-SE.JPG



036-RT6-F-NE.JPG



036-RT6-G-S.JPG



7305-0-00-A-N.JPG



7305-0-00-A-NE.JPG



7305-0-00-A1-NW.jpg



7305-0-00-B-SW.JPG



7305-0-00-A-S.JPG



7305-0-00-A1-SE.jpg



7305-0-00-B1-NW.jpg



7305-0-00-A-SW.JPG



7305-0-00-B-NE.JPG



7305-0-00-B1-SE.jpg



7305-0-00-C-NE.JPG



7305-0-00-C-1-SE.JPG



7305-0-00-D-1-E.JPG



7305-0-00-C-SW.JPG



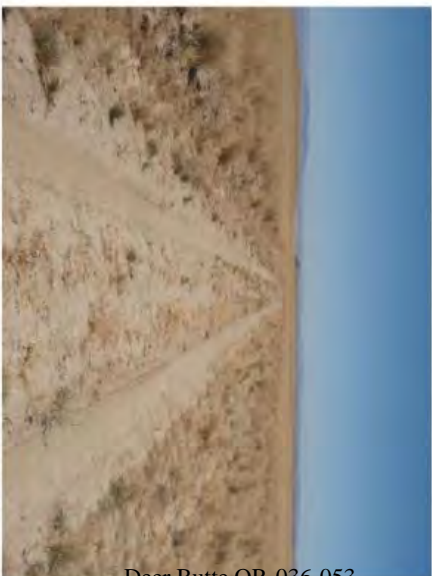
7305-0-00-D-E.JPG



7305-0-00-D-1-W.JPG



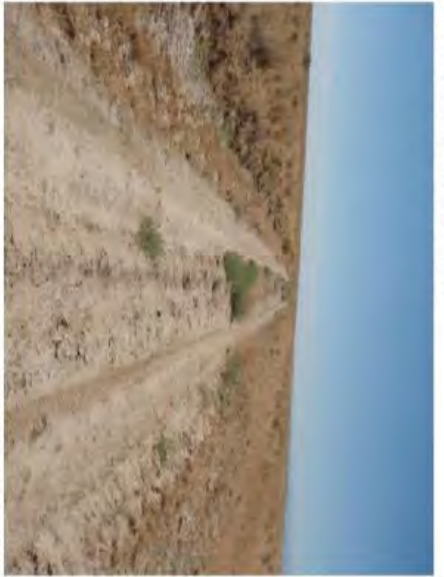
7305-0-00-C-1-NW.JPG



7305-0-00-D-W.JPG



7305-0-00-E-NE.JPG



7305-0-00-E-SW.JPG



7305-0-00-F-1-E.JPG



7305-0-00-G-1-W.JPG



7305-0-00-E-1-E.JPG



7305-0-00-F-1-W.JPG



7305-0-00-H-1-E.JPG



7305-0-00-E-1-W.JPG



7305-0-00-G-1-E.JPG



7305-0-00-H-1-W.JPG



7311-0-00-A-NE.jpg



7311-0-00-B-SW.jpg



7311-0-00-D-N.jpg



7311-0-00-A-SW.jpg



7311-0-00-C-N.jpg



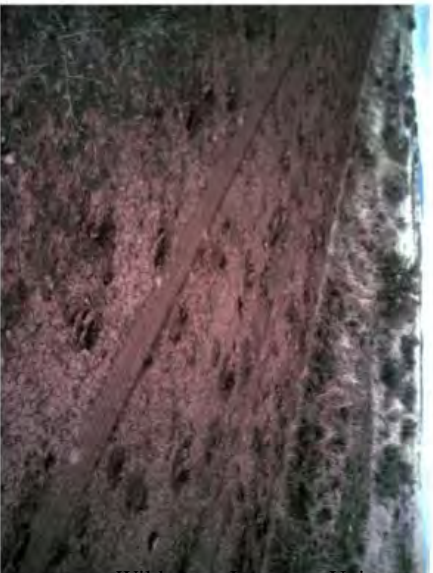
7311-0-00-D-S.jpg



7311-0-00-B-NE.jpg



7311-0-00-C-S.jpg



7311-0-00-E-N.jpg



7311-0-00-E-S.jpg



OR-036-053-A-SE.JPG

H-6300-1-WILDERNESS INVENTORY MAINTENANCE IN BLM OREGON/WASHINGTON

APPENDIX C – ROAD* ANALYSIS

(Factors to consider when determining whether a route is a road for wilderness inventory purposes)

Wilderness Inventory Unit Name/Number (UNIT_ID): OR-036-053 -- Deer Butte

NOTE: This unit is affected by ONDA’s proposed Deer Butte WSA.

Route Name and/or Identifier (*Include Transportation Plan Identifier, if known; include route number supplied by citizen information when available*):

Northwest section of BLM Road 7305-0-00
ONDA partial of designated BLM Road 7305-0-00 as route (way) OR1 and as route (way) North Boundary Road

- I. LOCATION:** See attached map. BLM Unit OR-036-053 contains BLM Road 7305-0-00 as the northwest boundary of the unit.

List photo point references:

BLM Road 7305-0-00 photos 7305-0-00-A – 7305-0-00-E (10 photos); photos 7305-0-00-E1 -- 7305-0-00-H1 (6 photos)
ONDA route (way) OR1 photos BB 053, 056, and 057; ONDA route (way) OR North Boundary photos BB 040, 050, 051, 052, 054, and 055

II. CURRENT PURPOSE OF ROUTE:

(Examples: Rangeland/Livestock Improvements (stock tank, developed spring, reservoir, fence, corral), Inholdings (ranch, farmhouse), Mine Site, Concentrated Use Site (camp site), Utilities (transmission line, telephone, pipeline), Administrative (project maintenance, communication site, vegetation treatment)

Describe: BLM Road 7305-0-00 is utilized mainly by recreationist to access numerous WSAs in the surrounding area, by ranchers (as observed by current BLM staff) and BLM staff for the administration of rangeland resources, livestock grazing, and the maintenance of livestock improvements (fences, springs, pipelines, and reservoirs) in two allotments. The road is also used on a seasonal basis during the fall months by hunters. BLM Road 7305-0-00 photographs

7305-0-00-A – 7305-0-00-E (10 photos) and photographs 7305-0-00-E1 -- 7305-0-00-H1 (6 photos) indicate that BLM Road 7305-0-00 receives a level of use and most probable by those people described above.

ONDA describes BLM Road 7305-0-00 as two sections of “ways,” the OR North Boundary route and OR1. ONDA states that the northern boundary of Deer Butte proposed WSA (referred to as OR North Boundary) is a deteriorating, overgrown, little used way (see photos BB40, 50, 51, 54, 55) and OR1 as an overgrown way with little to no sign of use (photos BB53, 56, 57).

BLM disagrees with ONDA’s description of use for BLM Road 7305-0-00 because of the information BLM has presented above stating who and why the road is traveled in addition to the photographs indicating that the road is traveled on a regular and continuous basis.

III. ROAD RIGHT-OF-WAY:

Is a road right-of-way associated with this route?

Yes _____ No X Unknown _____

IV. CONSTRUCTION

Yes X No _____

Examples: Paved _____ Bladed X Graveled _____
Roadside Berms X Cut/Fill _____ Other X

Describe: BLM Road 7305-0-00 was constructed by BLM sometime during the 1960s-1970s, with heavy equipment, consists of natural on-site material, and is part of the BLM Vale District Transportation Plan. No exact date for road construction can be found.

The existing road contains berms along the majority of both sides of the bladed roadbed. Also this section of BLM Road 7305-0-00 in many areas still contains ditches to drain water from the road along one side of the roadbed. The majority of the berms along the roadbed are now covered mostly by annual vegetation along with minor amounts of perennial plants since the berms have not been bladed for many years. Currently in an effort to reduce weed establishment along roads on public land the BLM blades only the roadbed when performing maintenance and not the entire width of the road that included berms and ditches when the road was originally constructed.

Existing roadside berms are not particularly pronounced in some segments of BLM Road 7305-0-00, especially in areas where the roadway travels over small hill tops (BLM photos 7305-0-00-C-SW and 7305-0-00-G1-W) or in relatively flat topography (BLM photos 7305-0-00-B-NE&SW) since these areas require little maintenance to remain passable by vehicles. In other areas along BLM Road 7305-0-00 some of the ditches and berms are covered with brush as well as sediment filling in the some of the remaining depth of ditches (BLM photos 7305-0-00-F1-E&W).

ONDA's information about roads in their 2004 document for the Deer Butte proposed WSA referred to their routes OR1 and North Boundary and photos BB 053, 056, and 057 and photos BB 040, 050, 051, 052, 054, and 055 respectively that cover sections of BLM Road 7305-0-00. Based on these photographs and field information, ONDA determined that BLM Road 7305-0-00 was not a road but a way. BLM does not support ONDA's conclusion based on BLM photographs and on field reconnaissance. ONDA's photographs and information for BLM Road 7305-0-00 was recorded during the spring months of 2004 when roads are not as well traveled as they are in the summer and fall. ONDA's photographs (BB 053-057) record large amounts of annual plants that cover the roadway and make it appear that BLM Road 7305-0-00 is not well used, has not received maintenance, and contains plants that restrict travel by vehicles. BLM has observed that the vast majority of annual plants covering the roadbed die off by early summer and disappear once vehicle use increases (BLM photos sets 7305-0-00 B,D, and E) by recreationist, ranchers, BLM staff, and then by hunters during the fall period of use.

V. IMPROVEMENTS

Yes No

By Hand Tools By Machine

Examples: Culverts Stream Crossings Bridges
 Drainage Barriers Other

Describe: Many sections of BLM Road 7305-0-00 contain ditches along the roadbed to drain water from the road and are usually part of the original construction. Therefore, the drainage ditches are considered an improvement even through many roads throughout the Vale District do not contain this feature.

VI. MAINTENANCE:

A. Is there Evidence or Documentation of Maintenance using hand tools or machinery? Yes No

If yes: Hand Tools (Y/N) Machine (Y/N)

Explain: Up until now BLM has been unable to locate a written record of when maintenance was last performed on this section of BLM Road 7305-0-00. The roadway has received maintenance as needed throughout the past 10 years as evident by BLM photographs of the road width and the vast majority of the roadbed and berms being void of perennial vegetation.

BLM has conducted maintenance to BLM Road 7305-0-00 over time as needed to keep this route passable. Earthen berms and drainage ditches on the edge of the road in photographs 7305-0-00-B-SW and H1-E&W show maintenance work that has been

performed on BLM Road 7305-0-00 in the past since the road was constructed. Although it has been many years since maintenance has been performed on the entire length of BLM Road 7305-0-00, it is evident from photographs BLM has taken, that little to no maintenance is needed to keep the roadbed in good operational condition.

B. If the route is in good condition, but there is no evidence of maintenance, would mechanical maintenance with hand tools or machines be approved by BLM in the event this route became impassable?

Yes No

Comments: Although there is no recent (1-3 years) evidence of maintenance on BLM Road 7305-0-00, BLM will approve maintenance with hand tools or machine as needed when road conditions warrant actions to keep it in a usable condition. Maintenance will be conducted in this road because it is a well-used east-west route between and for accessing Jordan Craters WSA, Lower Owyhee WSA, Owyhee Breaks WSA, and the Owyhee River Rim as well as access to ranchers and BLM staff for administration purposes.

BLM Road 7305-0-00 receives annual use, as evidence by the lack of brush in the roadway and by well-used bare ground where vehicles travel. It should be noted that small amounts of brush occur sporadically throughout the length of the road along berms and ditches. Vale District has reduced road maintenance needs on roads to only the roadbed and does not blade originally constructed berms unless vegetation encroachment on berms tend to restrict vehicular travel or blade ditches unless drainage from roadways is impeded (as evident in all photos for BLM Road7305-0-00).

To reduce the potential for erosion and the establishment of invasive plant and weed species, BLM emphasizes minimal ground disturbance for road construction and maintenance, through Best Management Practices (BMPs) as described in the SEORMP, Appendix O. BMPs are designed to assist in achieving land use objectives for maintaining or improving water quality, soil productivity, and the protection of watershed resources from ground disturbing activities. Therefore, BLM does not grade many roads unless obstruction to vehicle passage is evident. To further reduce ground disturbance and to minimize disruption of natural drainage patterns, roads are kept to the minimal width necessary. Additional precautions are taken to reduce vegetation removal by retention of vegetation on cut-slopes unless it proposes a safety hazard or restricts maintenance activities, and by conducting roadside brushing of vegetation in a way that prevents disturbance to plant root systems and does not create visual intrusions.

VII. REGULAR AND CONTINUOUS USE:

Yes No

Describe evidence (vehicle tracks observed) and other rationale for whether use has occurred and will continue to occur on a relatively regular basis:

BLM Road section 7305-0-00 has received regular use each year and will continue to receive use by ranchers (as observed by current BLM staff) for the administration and project maintenance of two livestock grazing allotments, by BLM staff for administration of allotments and WSA monitoring, by hunters during the fall months and by recreationist to access WSAs as evident from the roadway and tire disturbance indicating continual use. This road is well traveled as indicted by all the photographs listed above and the minimal quantity of perennial plants that inhabit the roadbed of BLM Road 7305-0-00. BLM Road 7305-0-00 is wide along most of its length, and is clearly defined on the landscape.

VIII. CONCLUSION:

To meet the definition of a road, items IV or V, and VI-A or B, and VII must be checked yes.

Road: Yes X No

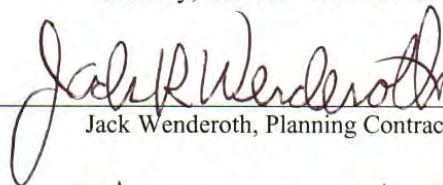
Explanation: BLM has determined that BLM Road 7305-0-00 meets the definition of a road as stated in Sections IV, V, VI-A, VI-B, and VII above. BLM Road 7305-0-00 was constructed by mechanical equipment, receives continuous seasonal use, and has been maintained since being constructed. BLM Road 7305-0-00 would be approved by management for maintenance as needed if the road base became impassable to allow for future and continuous use on a regular basis.

Evaluator(s):



Eian Ray, Outdoor Recreation Planner

Date: 4-5-11



Jack Wenderoth, Planning Contractor

Date: 4-5-11



Aimee Huff, Range Management Specialist

Date: 4/5/2011

Following is the definition from Glossary of OSO 7-3-2007 Draft H-6300-1:

***road:** An access route which has been **improved and maintained** by **mechanical means** to insure **relatively regular and continuous use**. A way maintained solely by the passage of vehicles does not constitute a road.

The BLM will continue to base the definition of what constitutes a “road” from the FLPMA’s legislative history. The language below is from the House of Representatives Committee Report 94-1163, page 17, dated May 15, 1976, on what became the FLPMA. It is the only statement regarding the definition of a road in the law or legislative history.

“The word ‘roadless’ refers to the absence of roads which have been improved and maintained by mechanical means to insure relatively regular and continuous use. A way maintained solely by the passage of vehicles does not constitute a road.”

The BLM previously adopted and will continue to use the following sub-definitions of certain words and phrases in the BLM road definition stated above:

a. **“Improved and maintained”** – Actions taken physically by people to keep the road open to vehicle traffic. “Improved” does not necessarily mean formal construction. “Maintained” does not necessarily mean annual maintenance.

b. **“Mechanical means”** – Use of hand or power machinery or tools

c. **“Relatively regular and continuous use”** – Vehicular use that has occurred and will continue to occur on a relatively regular basis. Examples are: access roads for equipment to maintain a stock water tank or other established water sources; access roads to maintained recreation sites or facilities; or access roads to mining claims.

A road that was established or has been maintained solely by the passage of vehicles would not be considered a road, even if it is used on a relatively regular and continuous basis. Vehicle roads constructed by mechanical means but that are no longer being maintained by mechanical methods are not roads. Sole use of hands and feet to move rocks or dirt without the use of tools or machinery does not meet the definition of “mechanical means.” Roads need not be “maintained” on a regular basis but rather “maintained” when road conditions warrant actions to keep it in a usable condition. A dead-end (cherry-stem) road can form the boundary of an inventory area and does not by itself disqualify an area from being considered “roadless”.

**H-6300-1-WILDERNESS INVENTORY MAINTENANCE
IN BLM OREGON/WASHINGTON**

APPENDIX C – ROAD* ANALYSIS

(Factors to consider when determining whether a route is a road for wilderness inventory purposes)

Wilderness Inventory Unit Name/Number (UNIT_ID): OR-036-053 -- Deer Butte

NOTE: This unit is affected by ONDA’s proposed Deer Butte WSA.

Route Name and/or Identifier (*Include Transportation Plan Identifier, if known; include route number supplied by citizen information when available*):

Northwest section of BLM Road 7311-0-00
ONDA partial of designated BLM Road 7311-0-00 as route (way) OR7d

VIII. LOCATION: See attached map. BLM unit OR-036-053 contains BLM Road 7311-0-00 as the northwest boundary of the unit.

List photo point references:

BLM Road 7311-0-00 photos; 7311-0-00-A – 7311-0-00-E (10 photos)
(BLM has added an additional 4 photographs of BLM Road 7311-0-00 [7311-0-00-A and E] that are before ONDA’s route OR7d only to indicate the extent of maintenance conducted upon BLM Road 7311-0-00 in 2007.)

ONDA route (way) OR7d photos; BB 025, 027, 028, and 029

(BLM has added ONDA photo BB 025 of route OR7d because it appears as a photo point on ONDA’s GIS presentation of their proposal but not in their photo log, road log or proposal narrative. Also ONDA photo BB 029 is taken from ONDA route OR7d of a fenced corral but does not show any of the OR7d route.)

IX. CURRENT PURPOSE OF ROUTE:

(Examples: Rangeland/Livestock Improvements (stock tank, developed spring, reservoir, fence, corral), Inholdings (ranch, farmhouse), Mine Site, Concentrated Use Site (camp site), Utilities (transmission line, telephone, pipeline), Administrative (project maintenance, communication site, vegetation treatment)

Describe: BLM Road 7311-0-00 is utilized mainly by recreationist to access numerous WSAs in the surrounding area and by ranchers (as observed by current BLM staff) and BLM staff for the administration of rangeland resources, livestock grazing, and the maintenance of livestock improvements (fences, springs, pipelines, and reservoirs) in two allotments. The road is also used on a seasonal basis during the fall months by hunters. BLM Road 7311-0-00 photographs

7311-0-00-B – 7311-0-11-D (6 photos) indicate that BLM Road 7311-0-00 receives a level of use and most probable by those people described above.

ONDA describes BLM Road 7311-0-00 as route OR7d (“way”) in their road log but does not mention it with the narrative portion of the proposal. ONDA states that the OR7d route is not maintained, overgrown, has little sign of use, grass between tracks and was bladed at one time but not recently (see photos BB 027,028, and 029).

BLM disagrees with ONDA’s description of use for BLM Road 7311-0-00 because of the information BLM has presented above stating who and why the road is traveled in addition to the photographs indicating that the road is traveled on a regular and continuous basis.

X. ROAD RIGHT-OF-WAY:

Is a road right-of-way associated with this route?

Yes _____ No X Unknown _____

XI. CONSTRUCTION

Yes X No _____

Examples: Paved _____ Bladed X Graveled _____
Roadside Berms X Cut/Fill _____ Other X

Describe: BLM Road 7311-0-00 was constructed by BLM sometime during the 1960s-1970s by heavy equipment, consists of natural material, and is part of the BLM Vale District Transportation Plan. No exact date for road construction can be found.

The existing road contains berms along the majority of both sides of the bladed roadbed. Road drainage ditches can still be observed in BLM photo 7311-0-00-B-NE. The majority of the berms along the roadbed are now covered mostly by perennial grasses and some shrubs along with annual plants since the original berm width has not been bladed for many years. Currently in an effort to reduce weed establishment along roads on public land the BLM blades only the roadbed when performing maintenance and not the entire width of the road that included berms when the road was originally constructed.

Presently the original constructed road berms are not particularly pronounced but the width of the constructed road can be determined along the road by the lack of brush (photos 7311-0-00-D-N&S). Photographs 7311-0-00-A-SW, C-S, and E-N

(BLM photos A-SW and E-N lie beyond the south and north limits respectively of ONDA's route OR7d) the indicate the width of the relatively recent 2007 bladed road maintenance compared to normal vehicle tract widths. All photographs show that recent maintenance was performed as indicated by the lack of any vegetation across the bladed road width (excluding berms) and areas of natural material left on the sides of the road by the road-grader's blade.

ONDA's information about roads in their 2004 document, for the Deer Butte proposed WSA referred to their route OR7d and photos BB 025 (BLM added), 027, 028, and 029 (fenced corral off route OR7d) for a section of BLM road 7311-0-00. Based on these photographs and field information, ONDA determined that a section of BLM Road 7311-0-00 was not a road but a way. BLM does not support ONDA's conclusion based on BLM performed road maintenance in 2007, photographs and on field reconnaissance. ONDA's photographs and information for this road were recorded prior to BLM conducted road maintenance in 2007. ONDA's photographs record large amounts of annual plants that cover the middle and sides of the roadway and make it appear that the road is not well used and has not received maintenance. Many of the annual plants covering the roadbed in ONDA's photographs die off by early summer and disappear (as observed by BLM staff) once vehicle use increases in late spring and summer by recreationist, ranchers, BLM staff, and then by hunters during the fall period of use.

XII. IMPROVEMENTS

Yes No

By Hand Tools By Machine

Examples: Culverts Stream Crossings Bridges
 Drainage Barriers Other

Describe: Sections of BLM Road 7311-0-00 (BLM photo 7311-0-00-B-NE) contain ditches along the roadbed to drain water from the road and are usually part of the original construction. Therefore, the drainage ditches are considered an improvement even through many roads sections of BLM Road 7311-0-00 and throughout the Vale District do not contain this feature.

XIII. MAINTENANCE:

A. Is there Evidence or Documentation of Maintenance using hand tools or machinery? Yes No

If yes: Hand Tools (Y/N) Machine (Y/N)

Explain: The roadway of BLM Road 7311-0-00 received maintenance in 2007 as needed as evident by all reference BLM photographs (7311-0-00A – E) of the road width (excluding berms and ditches) being void of perennial vegetation.

B. If the route is in good condition, but there is no evidence of maintenance, would mechanical maintenance with hand tools or machines be approved by BLM in the event this route became impassable?

Yes X No

Comments: Although road maintenance was performed on this section of Road 7311-0-00 in 2007, BLM will approve maintenance with hand tools or machine as needed when road conditions warrant actions to keep it in a usable condition. BLM Road 7311-0-00 is a well-used east-west route between and for accessing Jordan Craters WSA, Lower Owyhee WSA, Owyhee Breaks WSA, and the Owyhee River Rim as well as access to ranchers and BLM staff for administration purposes.

BLM Road 7311-0-00 receives annual use, as evidence by the lack of brush in the roadway and by well-used bare ground where vehicles travel. It should be noted that small amounts of brush occur sporadically throughout the length of the road along berms and ditches. Vale District has reduced road maintenance needs on roads to only the roadbed and does not blade originally constructed berms unless vegetation encroachment on berms tend to restrict vehicular travel or blade ditches unless drainage from roadways is impeded (as evident in all photos for BLM Road7311-0-00).

To reduce the potential for erosion and the establishment of invasive plant and weed species, BLM emphasizes minimal ground disturbance for road construction and maintenance, through Best Management Practices (BMPs) as described in the SEORMP, Appendix O. BMPs are designed to assist in achieving land use objectives for maintaining or improving water quality, soil productivity, and the protection of watershed resources from ground disturbing activities. Therefore, BLM does not grade many roads unless obstruction to vehicle passage is evident. To further reduce ground disturbance and to minimize disruption of natural drainage patterns, roads are kept to the minimal width necessary. Additional precautions are taken to reduce vegetation removal by retention of vegetation on cut-slopes unless it proposes a safety hazard or restricts maintenance activities, and by conducting roadside brushing of vegetation in a way that prevents disturbance to plant root systems and does not create visual intrusions.

XIV. REGULAR AND CONTINUOUS USE:

Yes X No

Describe evidence (vehicle tracks observed) and other rationale for whether use has occurred and will continue to occur on a relatively regular basis:

BLM Road section 7311-0-00 has received regular use each year and will continue to receive use by ranchers (as observed by current BLM staff) for the administration and project maintenance of two livestock grazing allotments, by BLM staff for administration of allotments and WSA monitoring, by hunters during the fall months and by recreationist to access WSAs as evident from the roadway and tire disturbance indicating continual use. This road is well traveled as indicted by all the photographs listed above and no perennial plants that inhabit the roadbed of BLM Road 7311-0-00. BLM Road 7311-0-00 is well traveled, wide along most of its length, and is clearly defined on the landscape.

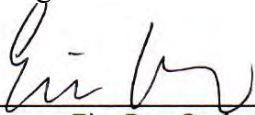
VIII. CONCLUSION:

To meet the definition of a road, items IV or V, and VI-A or B, and VII must be checked yes.

Road: Yes **No**

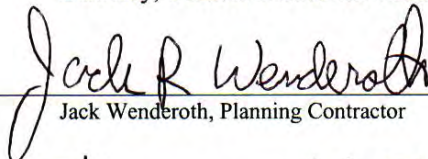
Explanation: BLM has determined that BLM Road 7311-0-00 meets the definition of a road as stated in Sections IV, V, VI-A, VI-B, and VII above. BLM Road 7311-0-00 was constructed by mechanical equipment, receives continuous seasonal use, and has been maintained since being constructed. BLM Road 7311-0-00 would continue to be approved by management for maintenance as needed and if the road base became impassable to allow for future regular and continuous use on a regular basis.

Evaluator(s):



Eian Ray, Outdoor Recreation Planner

Date: 4-5-11



Jack Wenderoth, Planning Contractor

Date: 4-5-11



Aimee Huff, Range Management Specialist

Date: 4/5/2011

Following is the definition from Glossary of OSO 7-3-2007 Draft H-6300-1:

* **road**: An access route which has been **improved and maintained** by **mechanical means** to insure **relatively regular and continuous use**. A way maintained solely by the passage of vehicles does not constitute a road.

The BLM will continue to base the definition of what constitutes a “road” from the FLPMA’s legislative history. The language below is from the House of Representatives Committee Report 94-1163, page 17, dated May 15, 1976, on what became the FLPMA. It is the only statement regarding the definition of a road in the law or legislative history.

“The word ‘roadless’ refers to the absence of roads which have been improved and maintained by mechanical means to insure relatively regular and continuous use. A way maintained solely by the passage of vehicles does not constitute a road.”

The BLM previously adopted and will continue to use the following sub-definitions of certain words and phrases in the BLM road definition stated above:

- a. **“Improved and maintained”** – Actions taken physically by people to keep the road open to vehicle traffic. “Improved” does not necessarily mean formal construction. “Maintained” does not necessarily mean annual maintenance.
- b. **“Mechanical means”** – Use of hand or power machinery or tools
- c. **“Relatively regular and continuous use”** – Vehicular use that has occurred and will continue to occur on a relatively regular basis. Examples are: access roads for equipment to maintain a stock water tank or other established water sources; access roads to maintained recreation sites or facilities; or access roads to mining claims.

A road that was established or has been maintained solely by the passage of vehicles would not be considered a road, even if it is used on a relatively regular and continuous basis. Vehicle roads constructed by mechanical means but that are no longer being maintained by mechanical methods are not roads. Sole use of hands and feet to move rocks or dirt without the use of tools or machinery does not meet the definition of “mechanical means.” Roads need not be “maintained” on a regular basis but rather “maintained” when road conditions warrant actions to keep it in a usable condition. A dead-end (cherry-stem) road can form the boundary of an inventory area and does not by itself disqualify an area from being considered “roadless”.