

Wilderness Inventory Unit Index of Documents
Cow Hollow OR-034-025, 10 total pages

Page 1: Index Cover Sheet

[Page 2: Form 1 - Documentation of BLM Wilderness Inventory: Findings on Record](#)

[Page 5: Form 2 - Documentation of Current Wilderness Inventory Conditions](#)

[Page 8: Form 2 - Summary of Findings and Conclusions](#)

[Page 9: Wilderness Characteristics Overview–Cow Hollow OR-034-025 Map 1 of 2](#)

[Page 10: Wilderness Characteristics–Land Treatments–Cow Hollow OR-034-025 Map 2 of 2](#)

Prepared by:
U.S. Department of the Interior
Bureau of Land Management
Vale District Office
100 Oregon Street
Vale, Oregon 97918



H-6300-1-WILDERNESS INVENTORY MAINTENANCE IN BLM OREGON/WASHINGTON

APPENDIX B – INVENTORY AREA EVALUATION

Evaluation of Current Conditions:

- 1) Document and review the existing BLM wilderness inventory findings on file, if available, regarding the presence or absence of individual wilderness characteristics, using Form 1, below.
- 2) Consider relevant information regarding current conditions available in the office to identify and describe any changes to the existing information (use interdisciplinary (ID) team knowledge, aerial photographs, field observations, maps, etc.), and document your findings on Form 2, below.

When Citizen Information has been submitted regarding wilderness characteristics, document the submitted materials including: date of Submission; Name of District(s) and Field Office(s) Affected; Type of material Submitted (e.g. narrative, map, photo). Evaluate any submitted citizen information regarding the validity of proposed boundaries of the unit(s), the existence of roads and other boundary features, the size of the unit(s), and the presence or absence of wilderness characteristics based on relevant information available in the office (prior BLM inventories, ID team knowledge, aerial photographs, field observations, maps, etc.)

Conduct field reviews as necessary to verify information and to ascertain current conditions. Reach conclusions on current conditions including boundaries, size of areas and presence or absence of wilderness characteristics. Fully explain the basis for each conclusion on form 2, including any critical differences between BLM and citizen information.

Document your findings regarding current conditions for each inventoried area. Describe how the present conditions are similar to, or have changed from, the conditions documented in the original wilderness inventory. Document your findings on Form 2 for each inventory area. Cite to or attach data considered, including photographs, maps, GIS layers, field trip notes, project files, *etc.*

Year: 2009 Unit Number/Name: OR-034-025 – Cow Hollow

**FORM 1 -- DOCUMENTATION OF BLM WILDERNESS INVENTORY
FINDINGS ON RECORD**

1. Is there existing BLM wilderness inventory information on all or part of this area?

Yes X No _____ (If yes, and if more than one unit is within the area, list the names of those units.):

A.) Inventory Source(s) -- (X) Denotes all applicable BLM Inventory files, printed maps, or published BLM Decision documents with information pertaining to this unit.

Wilderness Inventories

- (X) 1978-1979 – BLM Wilderness Inventory Unit OR-03-04-32 (3-317)-- Cow Hollow (unpublished BLM documents).
- () April 1979 – *Wilderness -- Proposed Initial Inventory – Roadless Areas and Islands Which Clearly Do Not have Wilderness Characteristics, Oregon and Washington*

Wilderness Decision Documents

- (X) August 1979 – *Wilderness Review – Initial Inventory, Final Decision on Public Lands Obviously Lacking Wilderness Characteristics and Announcement of Public Lands to be Intensively Inventoried for Wilderness Characteristics, Oregon and Washington* (green document)
- () October 1979 – *Wilderness Review – Intensive Inventory - Oregon, Proposed Decision on the Intensive Wilderness Inventory of Selected Areas* (grey document)
- () March 1980 – *Wilderness Review – Intensive Inventory; Final Decisions on 30 Selected Units in Southeast Oregon and Proposed Decisions on Other Intensively Inventoried Units in Oregon and Washington* (orange document)
- () November 1980 - *Wilderness Inventory – Oregon and Washington, Final Intensive Inventory Decisions* (brown document)
- () November 1981 *Stateline Intensive Wilderness Inventory Final Decision, Oregon, Idaho, Nevada, Utah* (tan document)

B.) Inventory Unit Name(s)/Number(s)

BLM unpublished file OR-03-04-32 (3-317) – Cow Hollow (1978-1979 unpublished BLM documents stored in 6-way case files).

C.) Map Name(s)/Number(s)

- (X) Final Decision – Initial Wilderness Inventory Map, August 1979, Oregon

- () Proposed Decision -- Intensive Wilderness Inventory of Selected Areas Map, October 1979, Oregon
- () Intensive Wilderness Inventory Map, March 1980, Oregon
- () Intensive Wilderness Inventory --Final Decisions Map, November 1980, Oregon
- () November, 1981 *Stateline Intensive Wilderness Inventory Final Decision, Oregon, Idaho, Nevada, Utah* (tan document)

D.) BLM District(s)/Field Office(s)
 Vale District/Malheur Resource Area

2. BLM Inventory Findings on Record

(Existing inventory information regarding wilderness characteristics (if more than one BLM inventory unit is associated with the area, list each unit and answer each question individually for each inventory unit):

Inventory Source: See above.

Unit#/Name	Size (historic acres)	Natural Condition? Y/N	Outstanding Solitude? Y/N	Outstanding Primitive & Unconfined Recreation? Y/N	Supplemental Values? Y/N
OR-03-04-32 (3-317) -- Cow Hollow	8,120	*	*	*	*
TOTAL	8,120				

* -- Specific information for OR-03-04-32, 3-317 could not be found in district inventory records. All 3-300 series wilderness characteristics units of the Vale District were part of an accelerated, separate inventory effort, related to a PP & L 500 kV transmission line proposal of 1977-78. The folder file of 1970's unit OR-03-04-32, Cow Hollow, also has the designation of 3-317; they covering the same area. The statewide decision map of the August 1979 document, *Wilderness Review – Initial Inventory, Final Decision on Public Lands Obviously Lacking Wilderness Characteristics and Announcement of Public Lands to be Intensively Inventoried for Wilderness Characteristics, Oregon and Washington*, identifies the units as previously not meeting wilderness characteristics, thus not subject to further review.

H-6300-1-WILDERNESS INVENTORY MAINTENANCE IN BLM OREGON/WASHINGTON

APPENDIX B – INVENTORY AREA EVALUATION

Evaluation of Current Conditions:

- 1) Document and review the existing BLM wilderness inventory findings on file, if available, regarding the presence or absence of individual wilderness characteristics, using Form 1, below.
- 2) Consider relevant information regarding current conditions available in the office to identify and describe any changes to the existing information (use interdisciplinary (ID) team knowledge, aerial photographs, field observations, maps, etc.), and document your findings on Form 2, below.

When Citizen Information has been submitted regarding wilderness characteristics, document the submitted materials including: date of Submission; Name of District(s) and Field Office(s) Affected; Type of material Submitted (e.g. narrative, map, photo). Evaluate any submitted citizen information regarding the validity of proposed boundaries of the unit(s), the existence of roads and other boundary features, the size of the unit(s), and the presence or absence of wilderness characteristics based on relevant information available in the office (prior BLM inventories, ID team knowledge, aerial photographs, field observations, maps, etc.)

Conduct field reviews as necessary to verify information and to ascertain current conditions. Reach conclusions on current conditions including boundaries, size of areas and presence or absence of wilderness characteristics. Fully explain the basis for each conclusion on form 2, including any critical differences between BLM and citizen information.

Document your findings regarding current conditions for each inventoried area. Describe how the present conditions are similar to, or have changed from, the conditions documented in the original wilderness inventory. Document your findings on Form 2 for each inventory area. Cite to or attach data considered, including photographs, maps, GIS layers, field trip notes, project files, *etc.*

FORM 2 -- DOCUMENTATION OF CURRENT WILDERNESS INVENTORY CONDITIONS

Unit Number/Name – OR-034-025 – Cow Hollow

Description of Current Conditions: [Include land ownership, location, topography, vegetation features and summary of major human uses/activities.]

1. Is the unit of sufficient size?

Yes X No

Description: Refer to the associated Map 1 for the location of this inventory unit. The boundaries are about the same as those identified in BLM's original wilderness characteristics inventory of the late 1970's, revised primarily by deleting certain bordering private land parcels associated with the unit's west boundary and aligning it with a road on its northwest boundary. The 7,622 acre unit is bounded by a combination of roads, non-BLM land parcels and the Cow Hollow North Canal. A very short segment of the east boundary is the paved Lytle Boulevard county road. Three very short cherry-stem roads (near the east boundary) are also features of the unit's boundary.

2. Is the unit in a natural condition?

Yes No X N/A

Description: The unit is dominated by very low profiled, rolling terrain. Elevations range from 2,420 to 3,168 feet. Vegetation is predominately sagebrush and grasses.

Refer to this inventory unit's associated Map 1 and Map 2 for human developments. They include 8.8 miles of fence, a water well, a 0.5 mile pipeline with one trough, an enclosure of a drainage on the unit's east end, a gravel pit (not documented in BLM GIS records, but is associated with the water canal on abutting BOR administered federal lands), and 16.9 miles of 14 motorized primitive trails. Three drilled seedings (2 of non-native and one of native grasses) – totaling approximately 460 acres in the eastern reaches of the unit were substantially noticeable at the time of the late 1970's BLM wilderness characteristics inventory. At that time, these seedings were substantially noticeable to the average visitor of the unit, thus adversely affecting the natural appearance of the unit. Since then, the evidence of range drill use and the seedings themselves have a natural appearance to the average visitor. In 2001, an aerial seeding of native forbes covered the central half of the unit, and in 2000 a drilled seeding of native species affected approximately 900 acres in the eastern third of the unit.

While past seeding and vegetation treatment activities are no longer substantially noticeable to the average visitor, the multitude of motorized primitive trails combined

with their distribution within the unit, the extent and density of their webbed interconnectedness, the extent of their passing completely through the unit's width of the unit over most of the unit's length in combination with the other visible human imprints of the unit results in the unit not appearing to being affected primarily by the forces of nature, and, overall, human imprints are substantially noticeable to the average visitor.

3. Does the unit have outstanding opportunities for solitude?

Yes _____ No _____ N/A X

Description:

4. Does the unit have outstanding opportunities for primitive and unconfined recreation?

Yes _____ No _____ N/A X

Description:

5. Does the unit have supplemental values?

Yes _____ No _____ N/A X

Description:

Summary of Findings and Conclusion

Unit Name and Number: OR-034-025 – Cow Hollow

Summary Results of Analysis:

- 1. Does the area meet any of the size requirements? Yes No
- 2. Does the area appear to be natural? Yes No
- 3. Does the area offer outstanding opportunities for solitude or a primitive and unconfined type of recreation? Yes No NA
- 4. Does the area have supplemental values? Yes No NA

Conclusion -- check one:

- The area, or a portion of the area, has wilderness character.
- The area does not have wilderness character.

Prepared by: 
Robert Alward, Wilderness Planner contractor

Team Members:

<u></u>	<u>2-23-2010</u>
Steve Christensen, Rangeland Management Specialist	Date
<u></u>	<u>3/10/10</u>
Shaney Rockefeller, Soil Scientist	Date
<u></u>	<u>2/10/10</u>
Dave Draheim, Outdoor Recreation Planner	Date
<u></u>	<u>02/08/2010</u>
Jon Westfall, Geologist	Date
<u></u>	<u>2/9/10</u>
Brent Grasty, GIS Coordinator	Date

(NOTE: Previous staff members who reviewed this unit include Botanist Jean Findley (retired 7/2008), and Wildlife Biologist Technician Sandy Vistine Ambor (transferred 8/2008)).

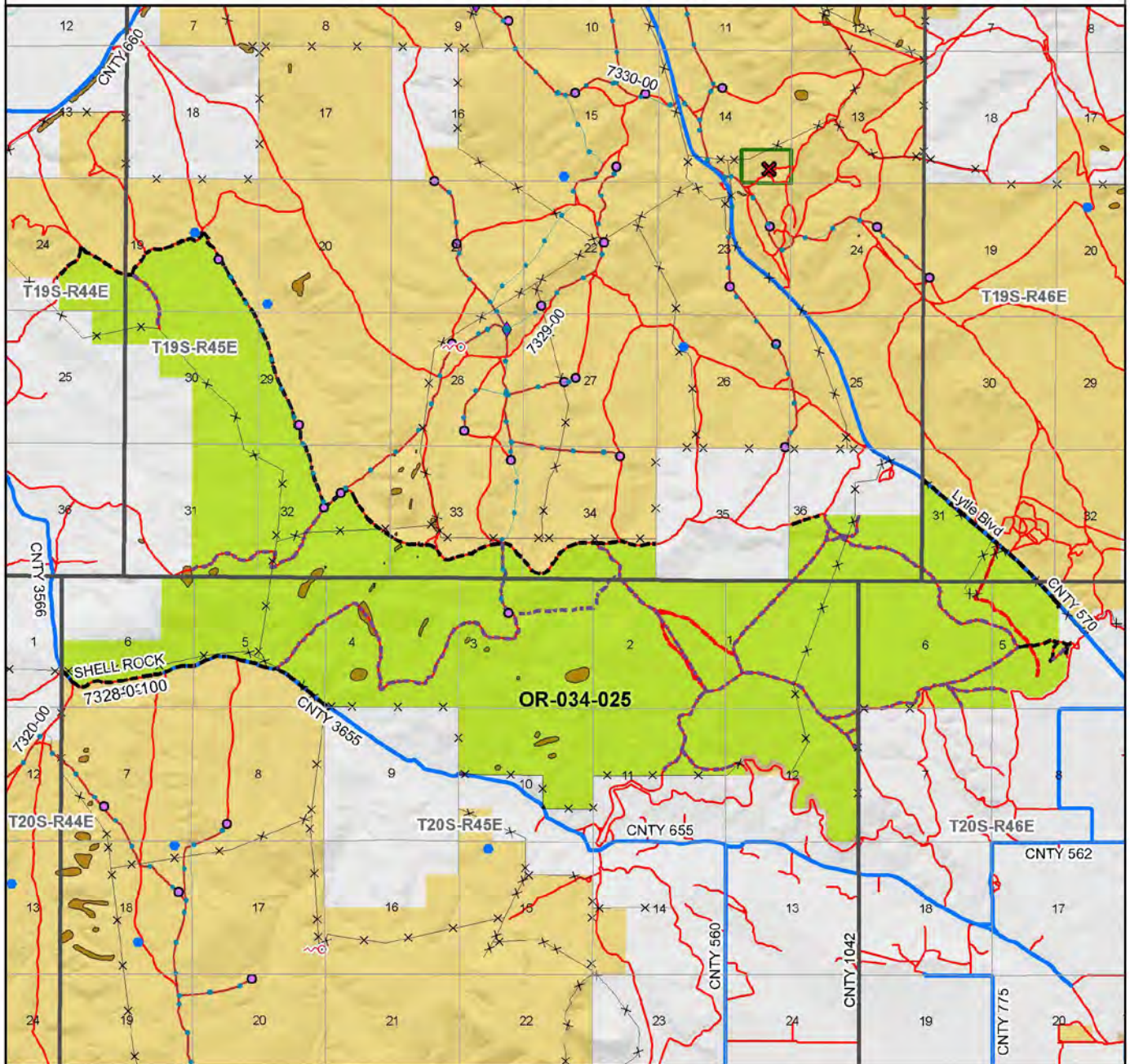
Approved by:  3/30/2010
Pat Ryan, Malheur Resource Area Field Manager Date

(NOTE: Previous staff members who reviewed this unit include Botanist Jean Findley (retired 7/2008), and Wildlife Biologist Technician Sandy Vistine Amdor (transferred 8/2008)).

This form documents information that constitutes an inventory finding on wilderness characteristics. It does not represent a formal land use allocation or a final agency decision subject to administrative remedies under either 43 CFR parts 4 or 1610.5-2.

Wilderness Characteristics - Overview

Cow Hollow - OR-034-025 - Map 1 of 2



Legend

- Developed Spring
- Wildlife Guzzler
- Earthen Reservoir
- Pipeline
- Trough
- Fence
- Storage Tank
- Surface Mining Disturbance
- Sage Grouse Lek
- Special Status Plant
- BLM Wild Char Inventory Unit
- Wilderness Study Area
- Minerals Material Site
- Road/Utility Right-of-Way
- Major Water Body

Route Types - BLM Determination

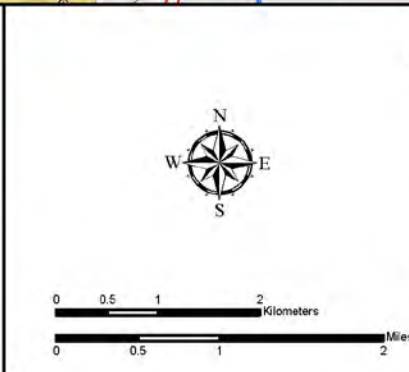
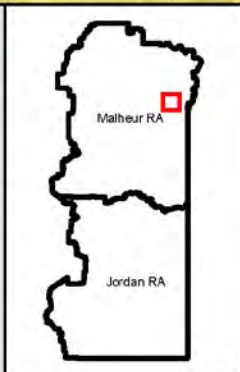
- Boundary Road
- Mojonized Primitive Trail (MPT)
- Discontinued Use

Routes - Outside Wilds Char Unit

- County
- Major Highway
- BLM Numbered & Other Routes

Land Ownership

- Bureau of Land Management
- State
- Private
- Other Federal Land



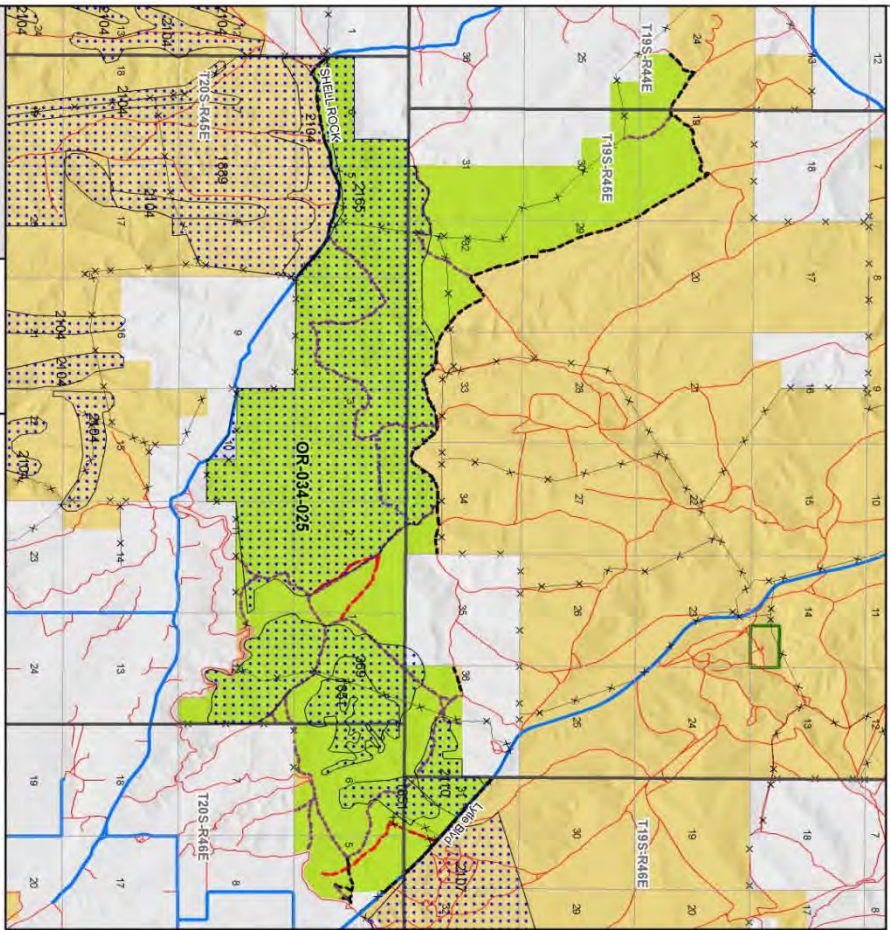
U.S. DEPARTMENT OF THE INTERIOR
BUREAU OF LAND MANAGEMENT

VALE DISTRICT
March 19, 2009

No warranty is made by the Bureau of Land Management as to the accuracy, reliability, or completeness of these data for individual or aggregate use with other data. Original data were compiled from various sources. This information may not meet National Map Accuracy Standards. This product was developed through digital means and may be updated without notification.

-FINAL-

Wilderness Characteristics - Land Treatments
Cow Hollow - OR-034-025 - Map 2 of 2



Legend

- Land Treatment
- Wilderness Inventory
- Boundary
- Water
- Road
- Other
- Other (Not Shown)

Notes:

- 1. All land treatments are shown in green.
- 2. All land treatments are shown in yellow.
- 3. All land treatments are shown in blue.
- 4. All land treatments are shown in red.
- 5. All land treatments are shown in purple.
- 6. All land treatments are shown in orange.
- 7. All land treatments are shown in pink.
- 8. All land treatments are shown in light blue.
- 9. All land treatments are shown in light green.
- 10. All land treatments are shown in light yellow.
- 11. All land treatments are shown in light orange.
- 12. All land treatments are shown in light pink.
- 13. All land treatments are shown in light light blue.
- 14. All land treatments are shown in light light green.
- 15. All land treatments are shown in light light yellow.
- 16. All land treatments are shown in light light orange.
- 17. All land treatments are shown in light light pink.
- 18. All land treatments are shown in light light light blue.
- 19. All land treatments are shown in light light light green.
- 20. All land treatments are shown in light light light yellow.
- 21. All land treatments are shown in light light light orange.
- 22. All land treatments are shown in light light light pink.
- 23. All land treatments are shown in light light light light blue.
- 24. All land treatments are shown in light light light light green.
- 25. All land treatments are shown in light light light light yellow.
- 26. All land treatments are shown in light light light light orange.
- 27. All land treatments are shown in light light light light pink.
- 28. All land treatments are shown in light light light light light blue.
- 29. All land treatments are shown in light light light light light green.
- 30. All land treatments are shown in light light light light light yellow.
- 31. All land treatments are shown in light light light light light orange.
- 32. All land treatments are shown in light light light light light pink.
- 33. All land treatments are shown in light light light light light light blue.
- 34. All land treatments are shown in light light light light light light green.
- 35. All land treatments are shown in light light light light light light yellow.
- 36. All land treatments are shown in light light light light light light orange.
- 37. All land treatments are shown in light light light light light light pink.
- 38. All land treatments are shown in light light light light light light light blue.
- 39. All land treatments are shown in light light light light light light light green.
- 40. All land treatments are shown in light light light light light light light yellow.
- 41. All land treatments are shown in light light light light light light light orange.
- 42. All land treatments are shown in light light light light light light light pink.
- 43. All land treatments are shown in light light light light light light light light blue.
- 44. All land treatments are shown in light light light light light light light light green.
- 45. All land treatments are shown in light light light light light light light light yellow.
- 46. All land treatments are shown in light light light light light light light light orange.
- 47. All land treatments are shown in light light light light light light light light pink.
- 48. All land treatments are shown in light light light light light light light light light blue.
- 49. All land treatments are shown in light light light light light light light light light green.
- 50. All land treatments are shown in light light light light light light light light light yellow.

U.S. DEPARTMENT OF THE INTERIOR
BUREAU OF LAND MANAGEMENT

VALE DISTRICT
 March 19, 2009

---FINAL---

Wilderness Characteristics - Land Treatments
Cow Hollow - OR-034-025 - Map 2 of 2

OBJECTID*	NAME	TREATMENT TYPE	SEED GROUP	DATE
389	COW HOLLOW STABILIZATION	Drill Seeding	Native Grasses	20060301
1881	DUMP FIRE SEEDING	Drill Seeding	Non-native Grasses	1975
1889	COW HOLLOW SEEDING	<Null>	Not Applicable	1986
2104	COW HOLLOW SEEDING EXTENSION	Drill Seeding	Native Grasses	1996
2107	LINCOLN FIRE REPAIR	Drill Seeding	Non and Native Grass	1999
2110	BOULEVARD SEEDING	Drill Seeding	Non-native Grasses	1973
2165	COW HOLLOW FIRE REPAIR #2	Aerial Seeding	Native Forbs	2001

Note: The Land Treatments represented by navy blue dots on the map to the left are labeled with the treatments ObjectIDs listed in the first field of the Land Treatments table shown above. Multiple types of treatments may have been applied to the same area. For example, one treatment area may have been plowed and drill seeded - a record is shown in the table for each type of treatment.